



# MILLBRAE-SFO STATION

## High-Speed Rail Station Modifications

The Preferred Alternative includes modifications at the Millbrae-SFO Station. New high-speed rail infrastructure would be built at the existing BART/Caltrain Station, including a new station entrance hall with ticketing and support services. Other station area modifications would include:

- Two new tracks and new high-speed rail platform
- Overhead pedestrian crossing to connect high-speed rail to Caltrain and BART
- Extension of California Drive to Victoria Avenue for station access
- Replacement parking for displaced Caltrain and BART parking
- New signals and pedestrian crossings at Chadbourne Avenue and El Camino Real
- New dedicated bicycle path for westside station access

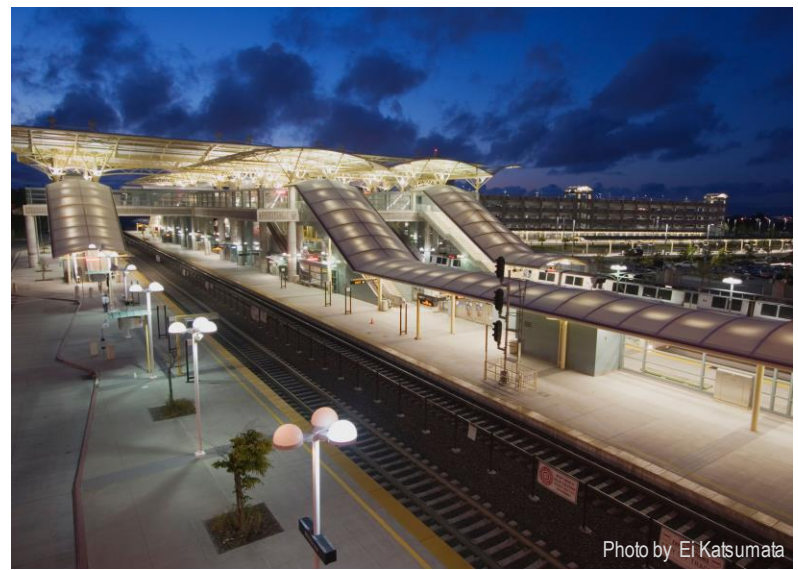
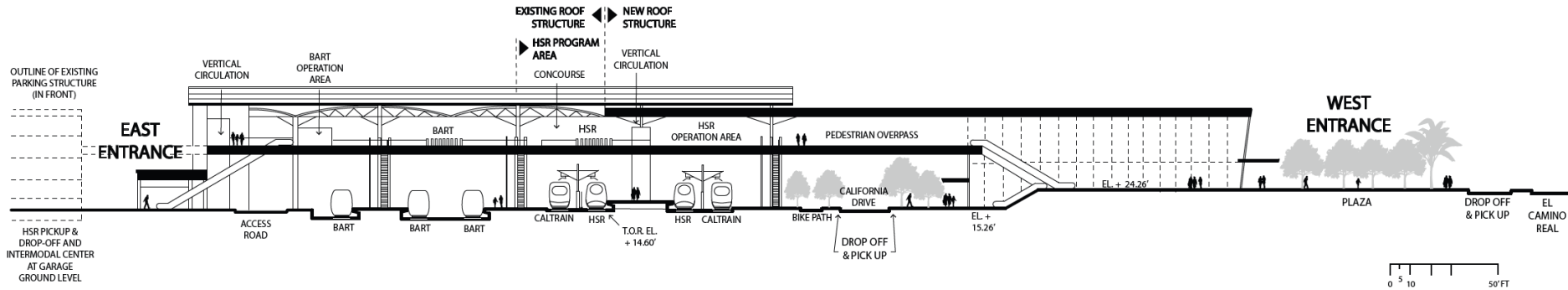


Photo by Ei Katsumata

## Station Section



For more information on high-speed rail stations in the San Francisco to San Jose Project Section, see Volume 1, Chapter 3 of the Final EIR/EIS.