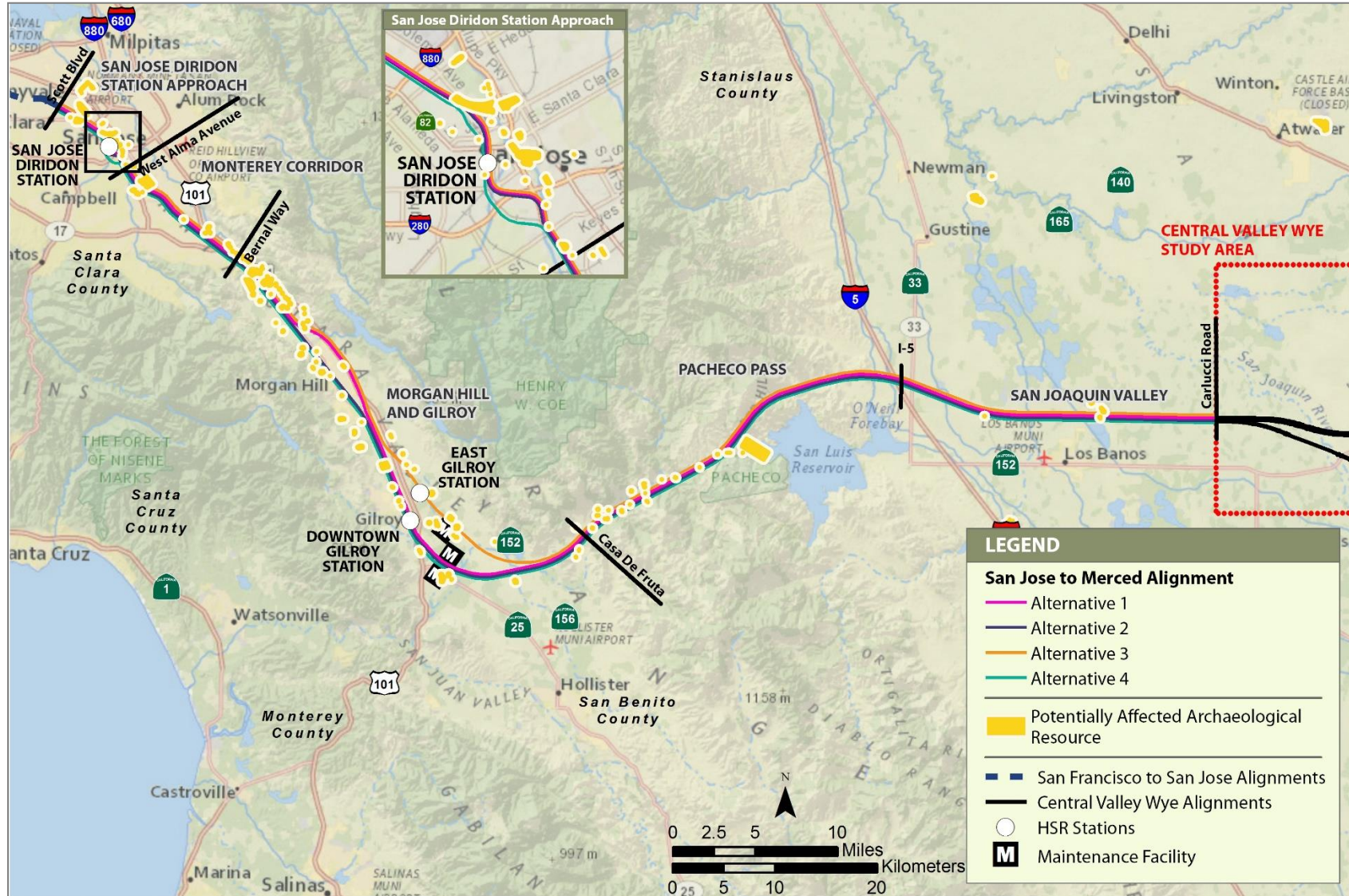


## APPENDIX 3.17-C: ARCHAEOLOGICAL AND BUILT RESOURCES

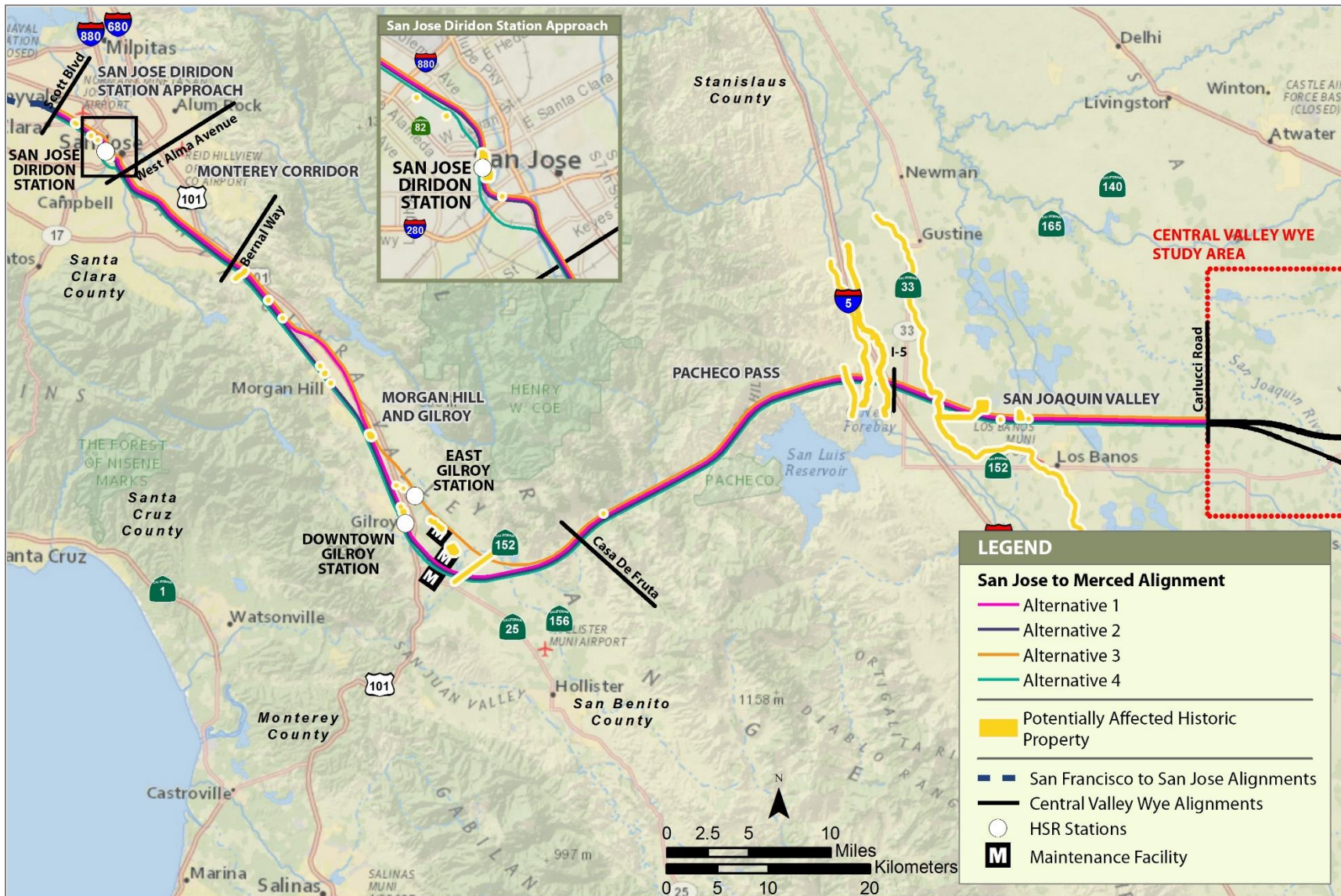
Appendix 3.17-C includes a map set containing overview maps for potentially affected archaeological resources and potentially affected historic built resources locations, as well as individual historic built resource maps that show project alternative alignments, project footprint boundaries, and potentially affected historic property boundaries. The built resource maps include the identification numbers assigned to individual resources located in the APE. A description of the project scope and evaluation of impacts at each resource are included in Chapter 3.17-C, *Cultural Resources*, and are organized by these resource identification number. Individual archaeological site maps are not included, because the location of such resources is protected from public disclosure under state and federal law.





APRIL 2019

Figure 1 Overview of Potentially Affected Archaeological Resources



APRIL 2019

Figure 2 Overview of Potentially Affected Historic Built Resources

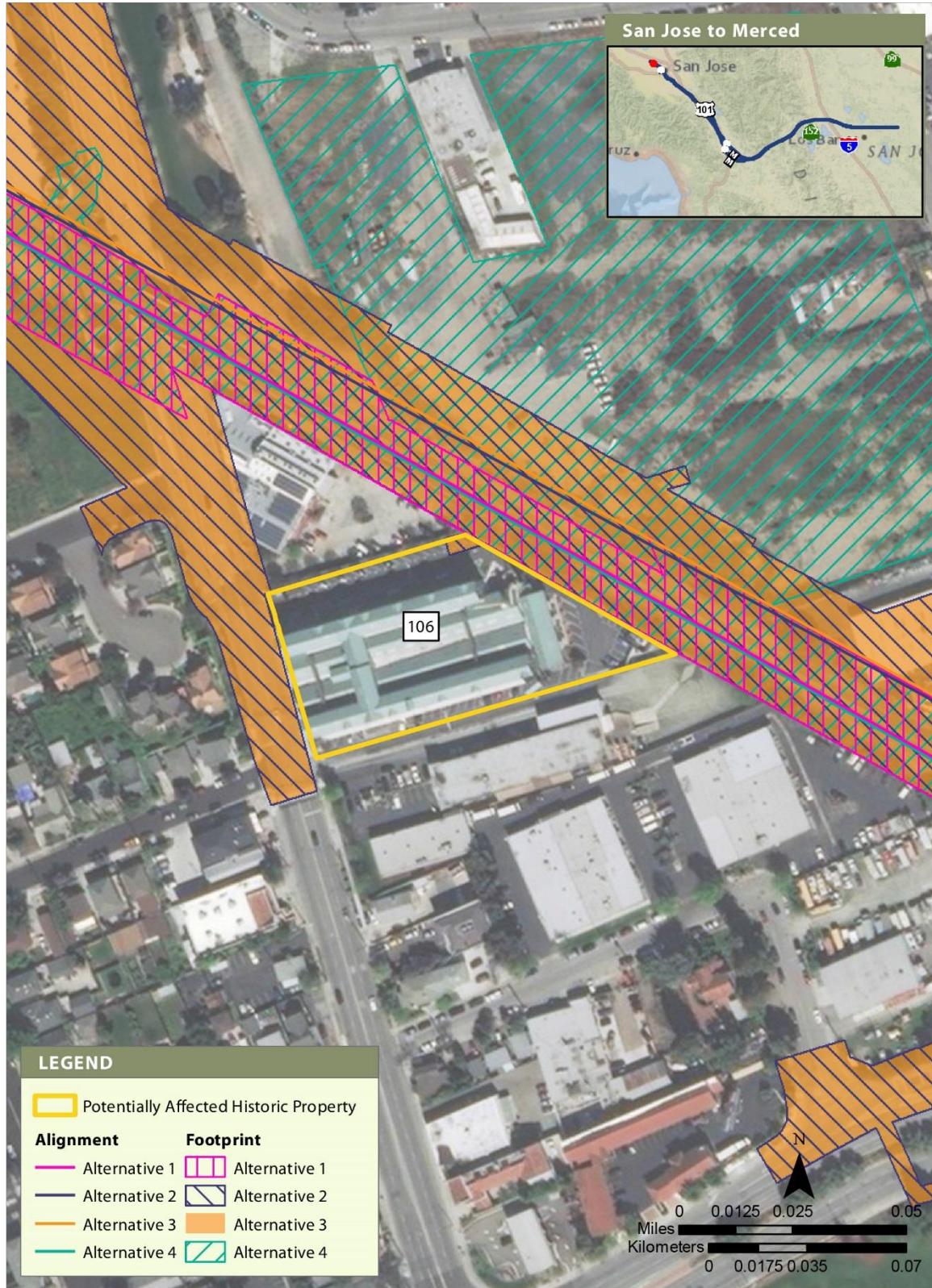


Figure 3 Built Resource Site 106



APRIL 2019

**Figure 4 Built Resource Site 111**



APRIL 2019

**Figure 5 Built Resource Site 141**

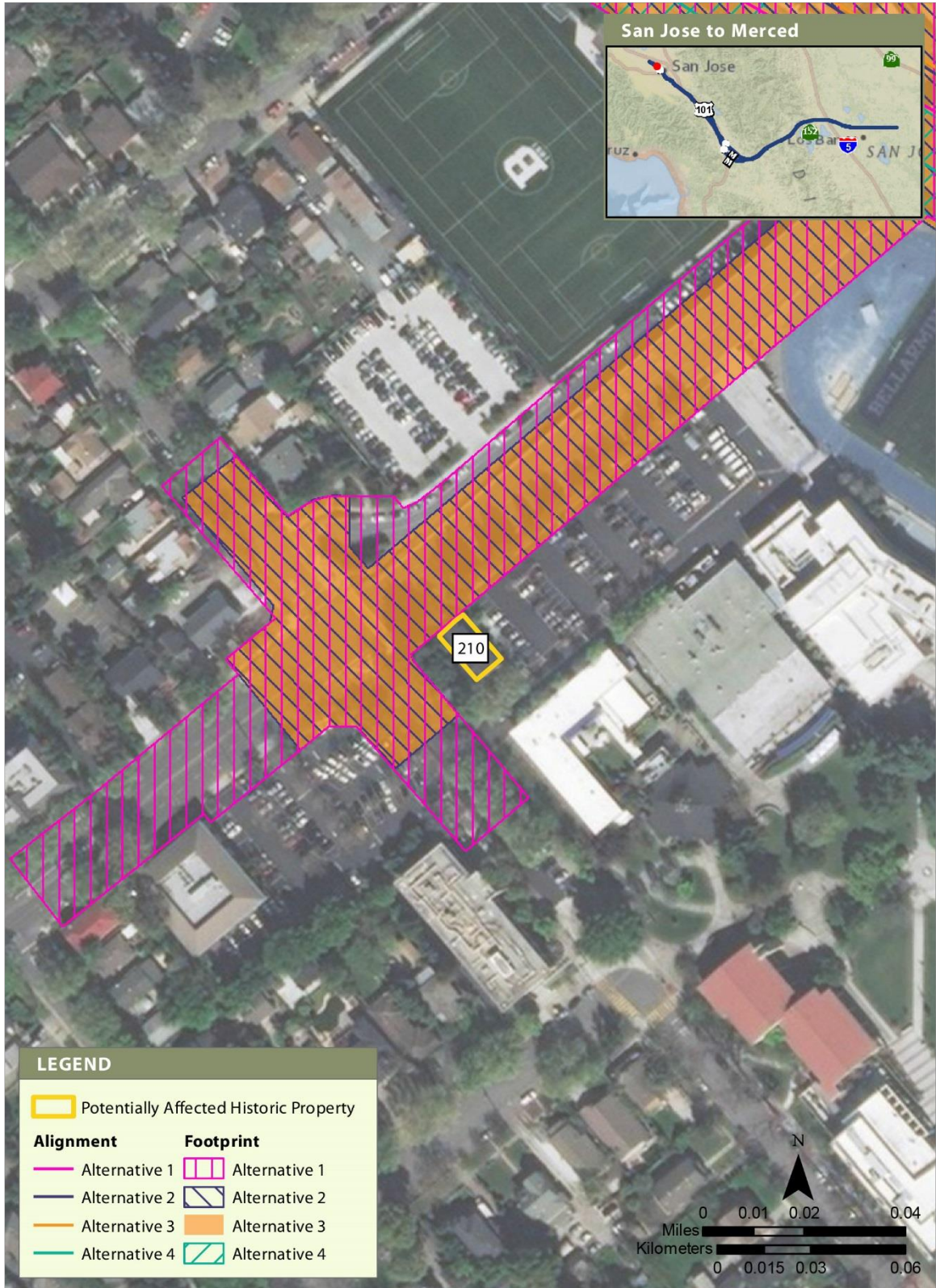


Figure 6 Built Resource Site 210





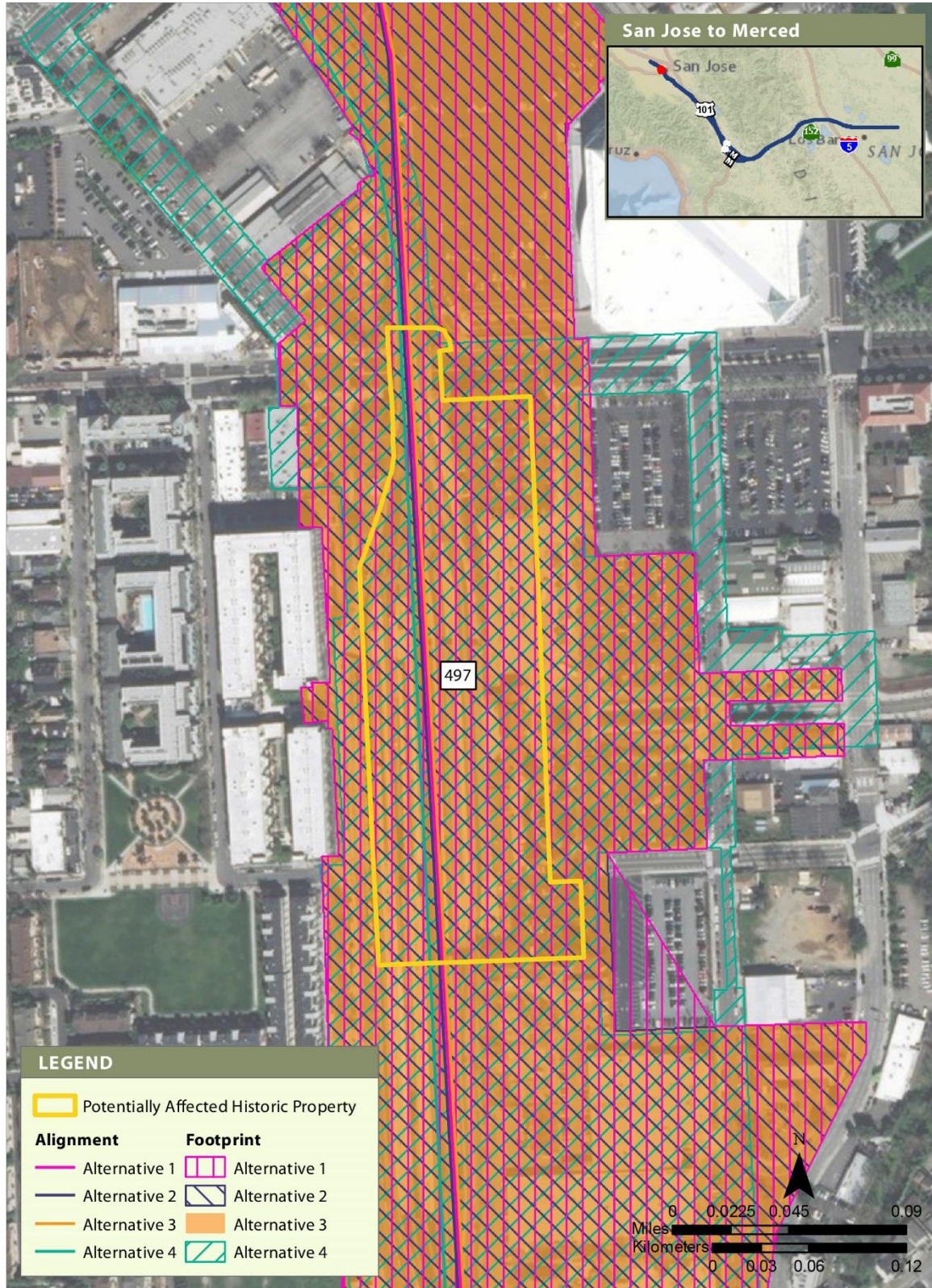
APRIL 2019

Figure 7 Built Resource Site 304



APRIL 2019

**Figure 8 Built Resource Site 495**



**Figure 9 Built Resource Site 497**



APRIL 2019

**Figure 10 Built Resource Site 522**



Figure 11 Built Resource Site 566

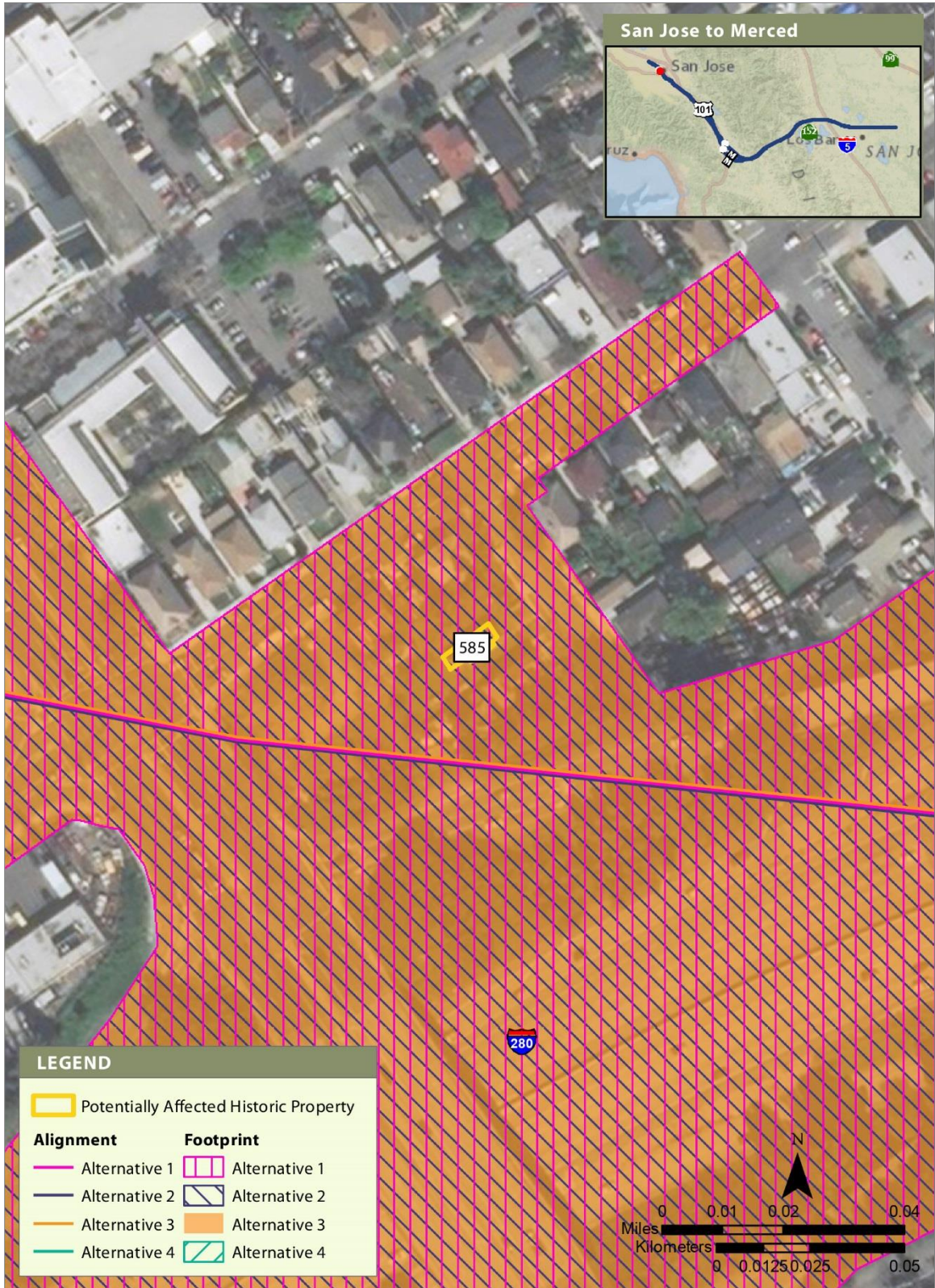
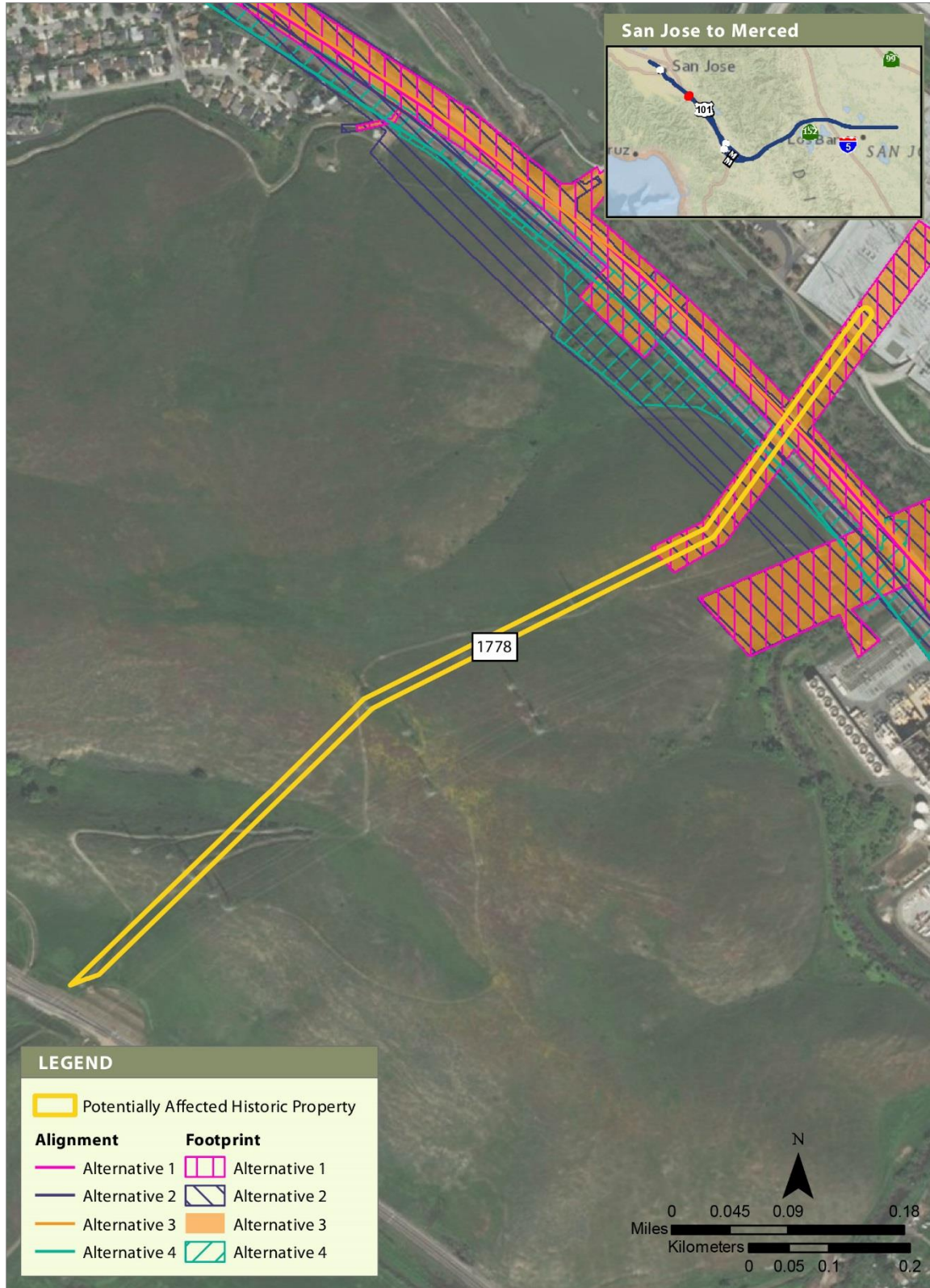
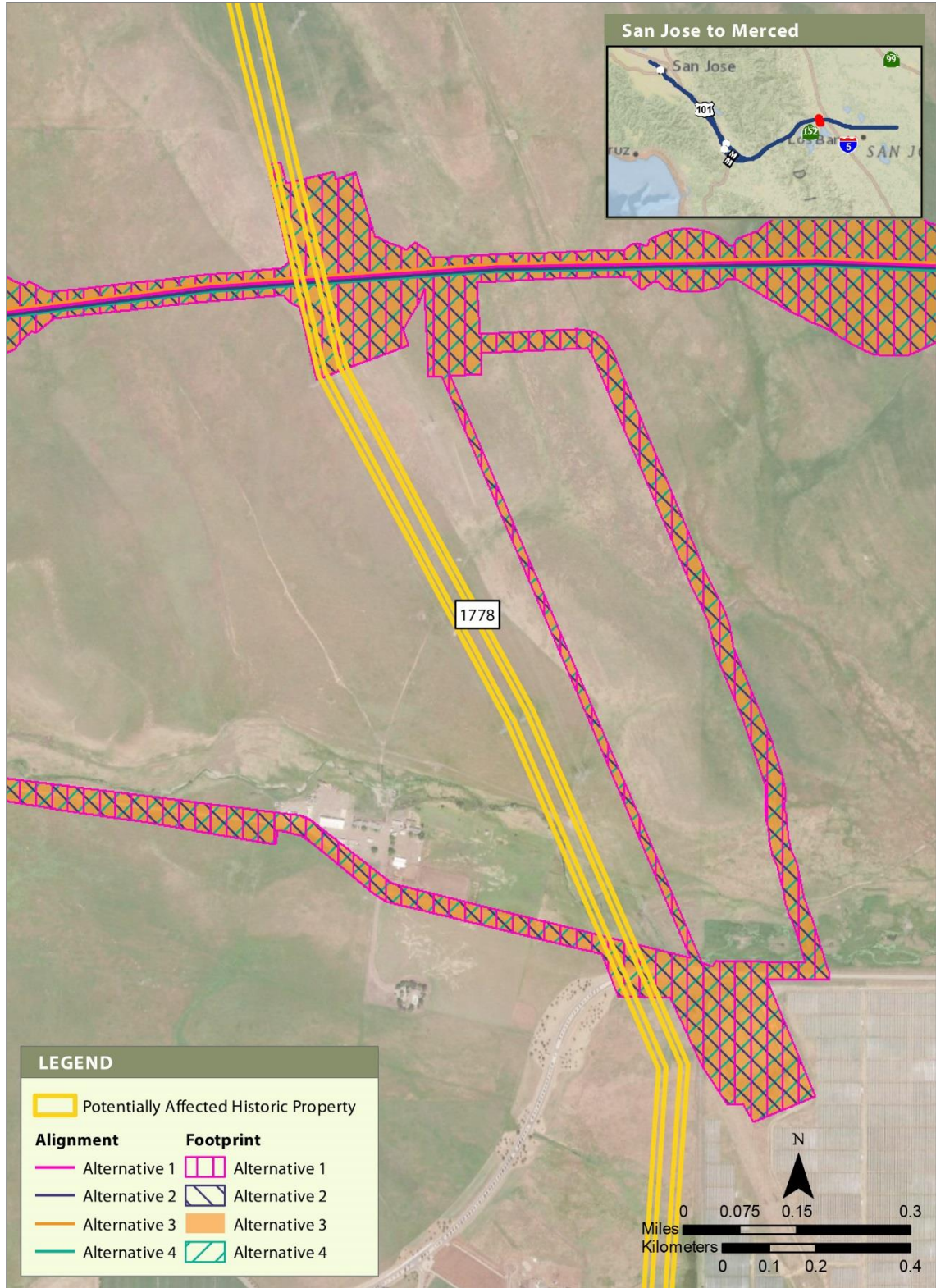


Figure 12 Built Resource Site 585



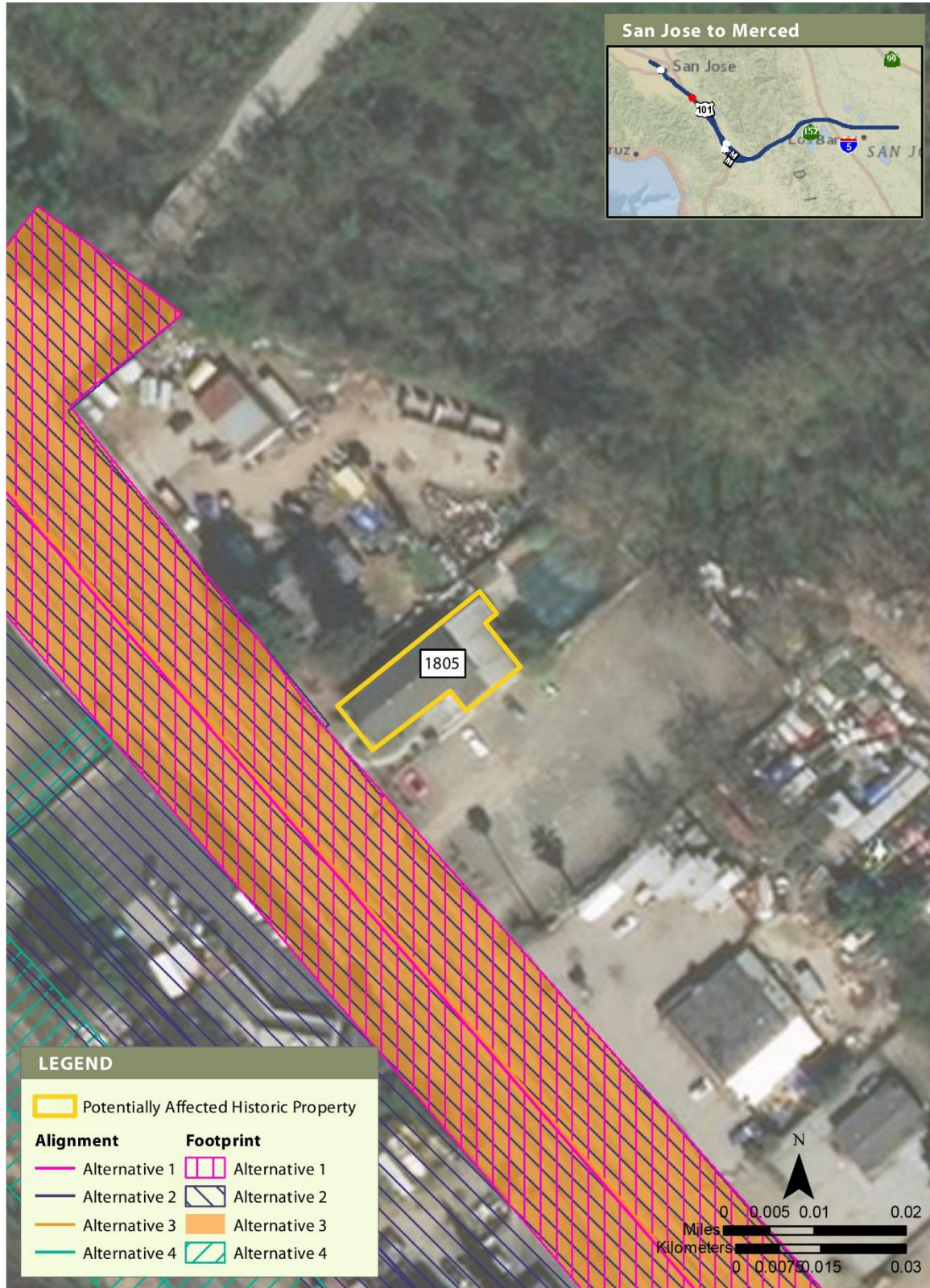
**Figure 13 Built Resource Site 1778 (500-kV Moss Landing-Metcalf Transmission Line)**



APRIL 2019

**Figure 14 Built Resource Site 1778 (500-kV Tesla-Los Banos No. 1 and 500-kV Tracy-Los Banos Transmission Lines)**





APRIL 2019

**Figure 15 Built Resource Site 1805**

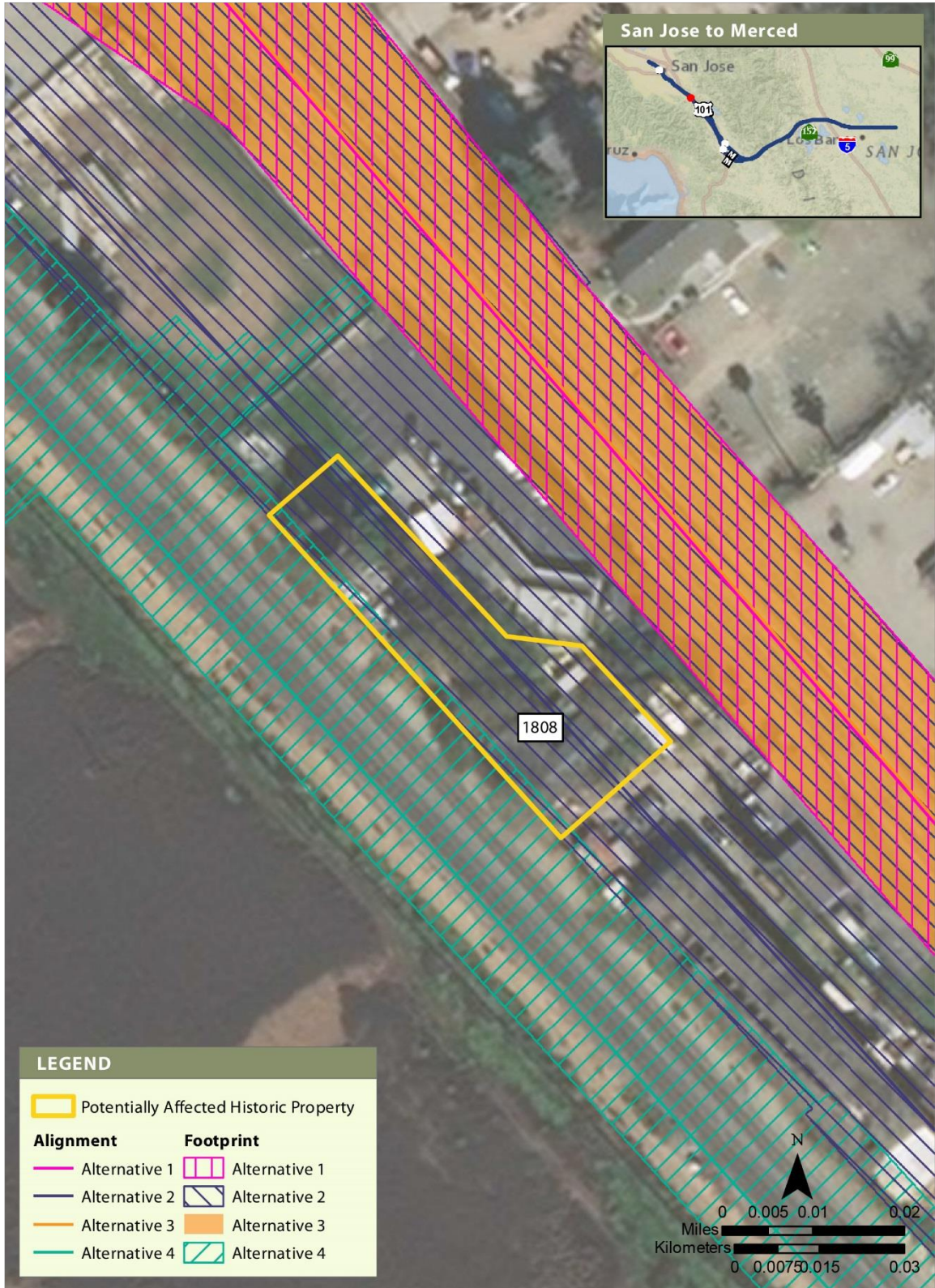
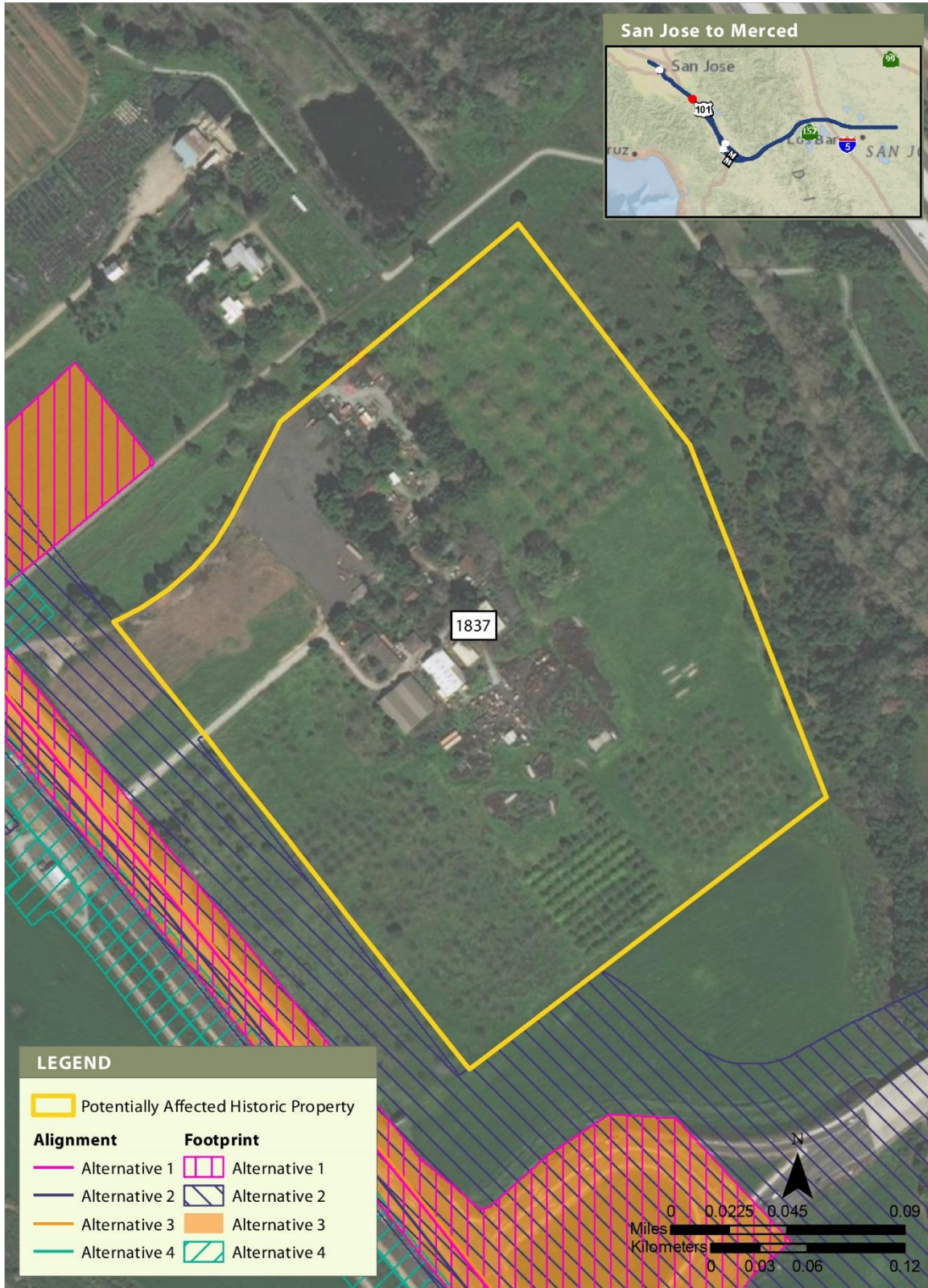
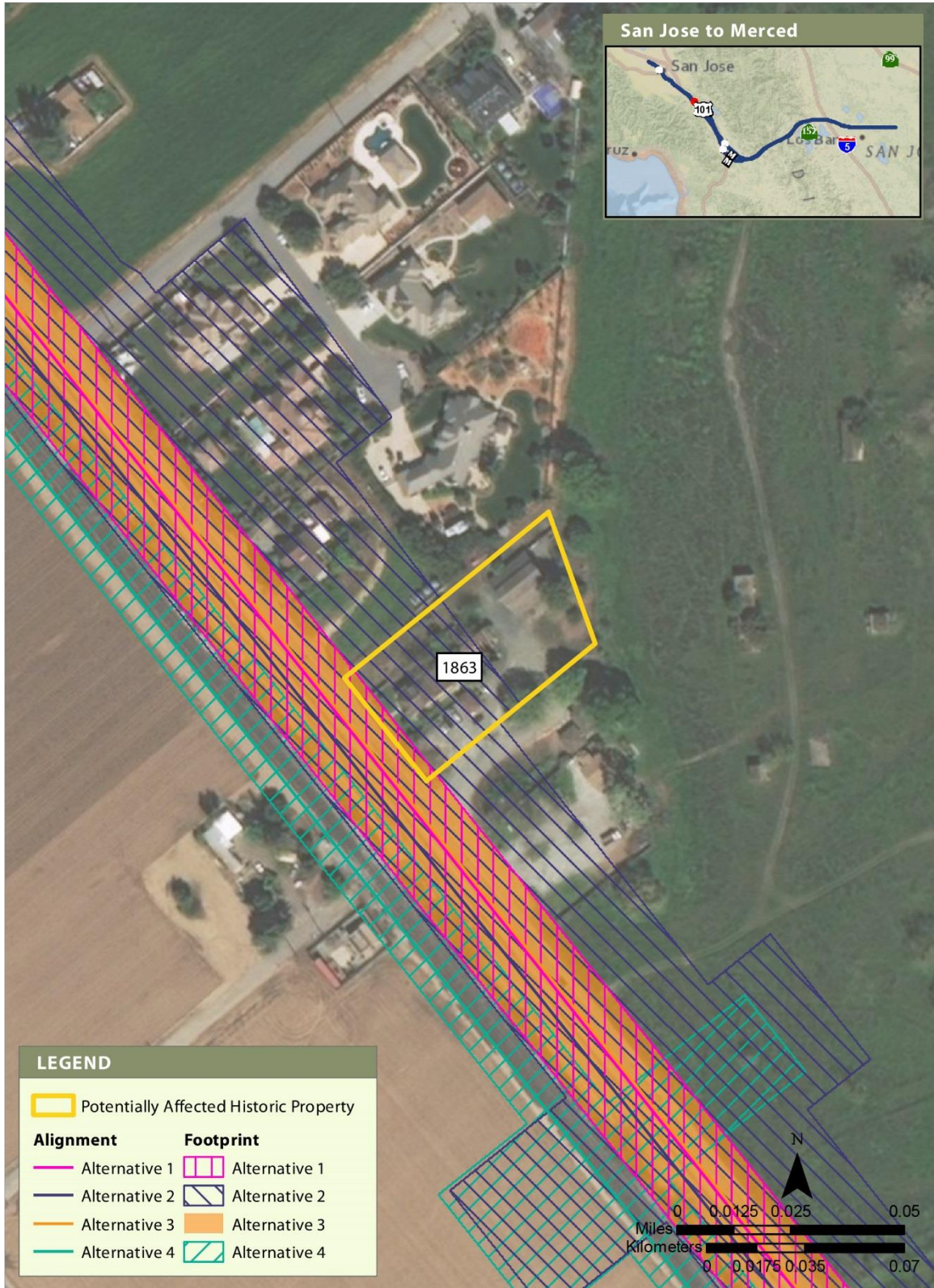


Figure 16 Built Resource Site 1808



APRIL 2019

**Figure 17 Built Resource Site 1837**



APRIL 2019

**Figure 18 Built Resource Site 1863**

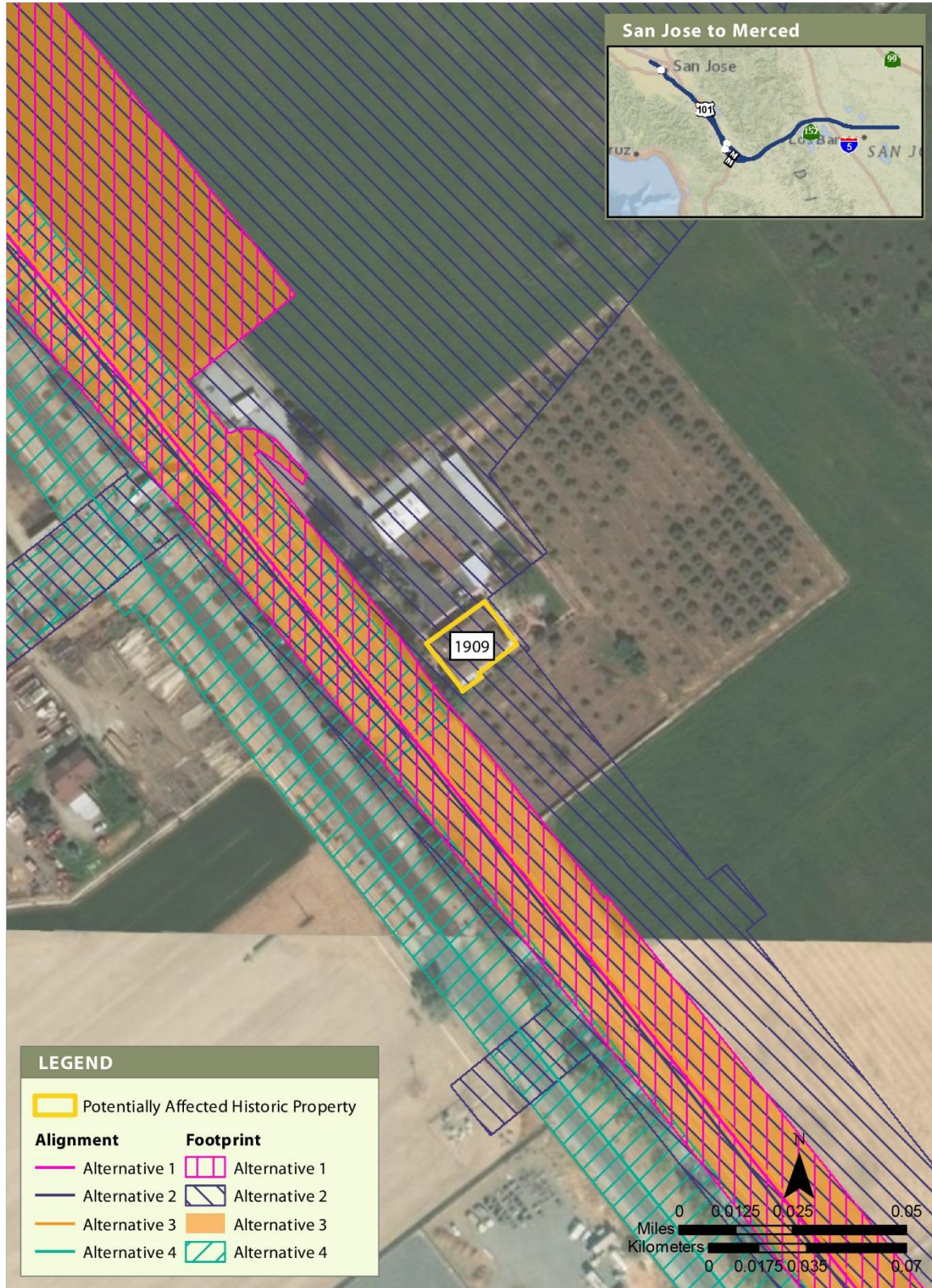


Figure 19 Built Resource Site 1909



APRIL 2019

**Figure 20 Built Resource Site 2044**



APRIL 2019

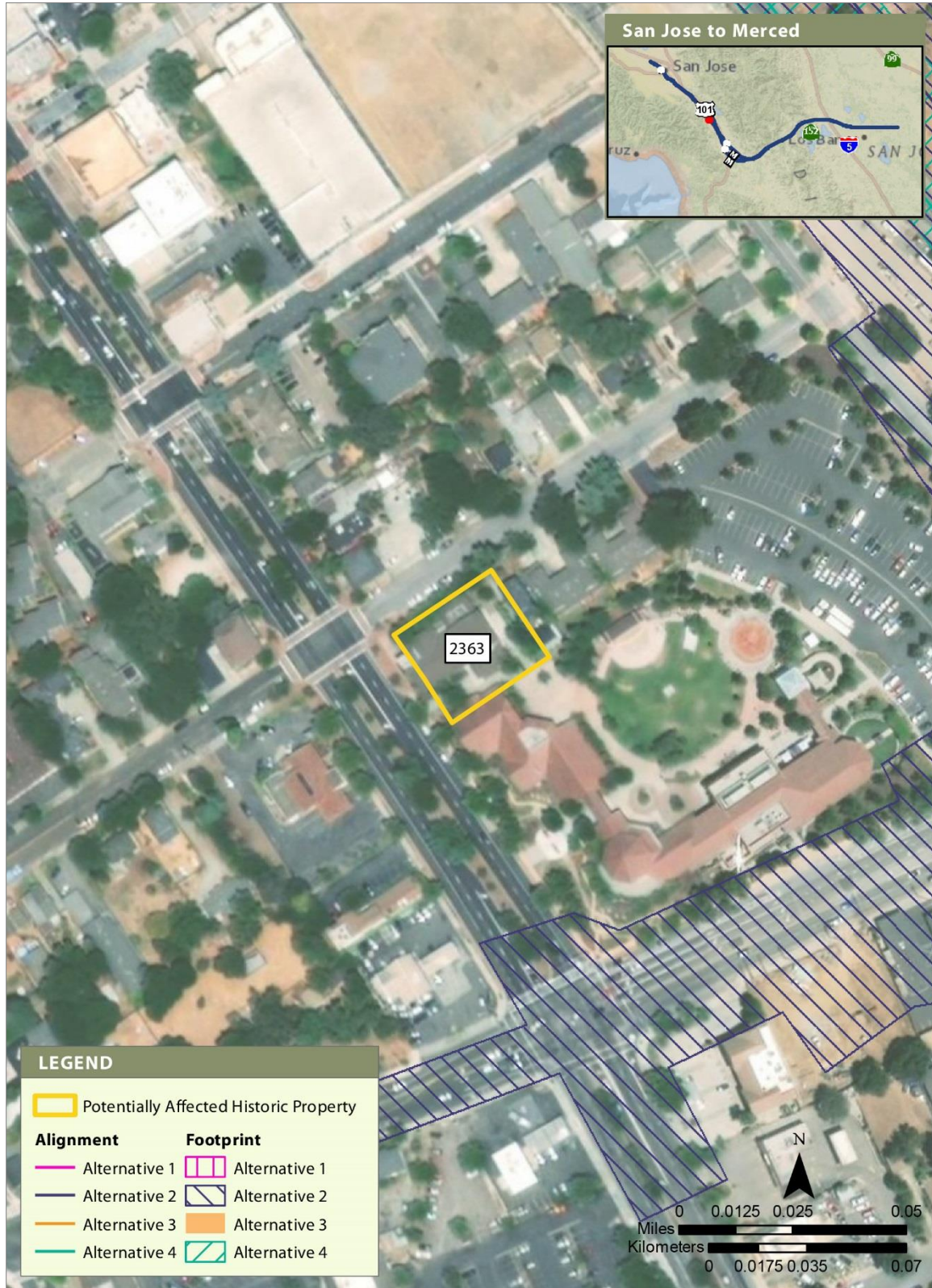
**Figure 21 Built Resource Site 2127**



APRIL 2019

**Figure 22 Built Resource Site 2194**





APRIL 2019

**Figure 23 Built Resource Site 2363**

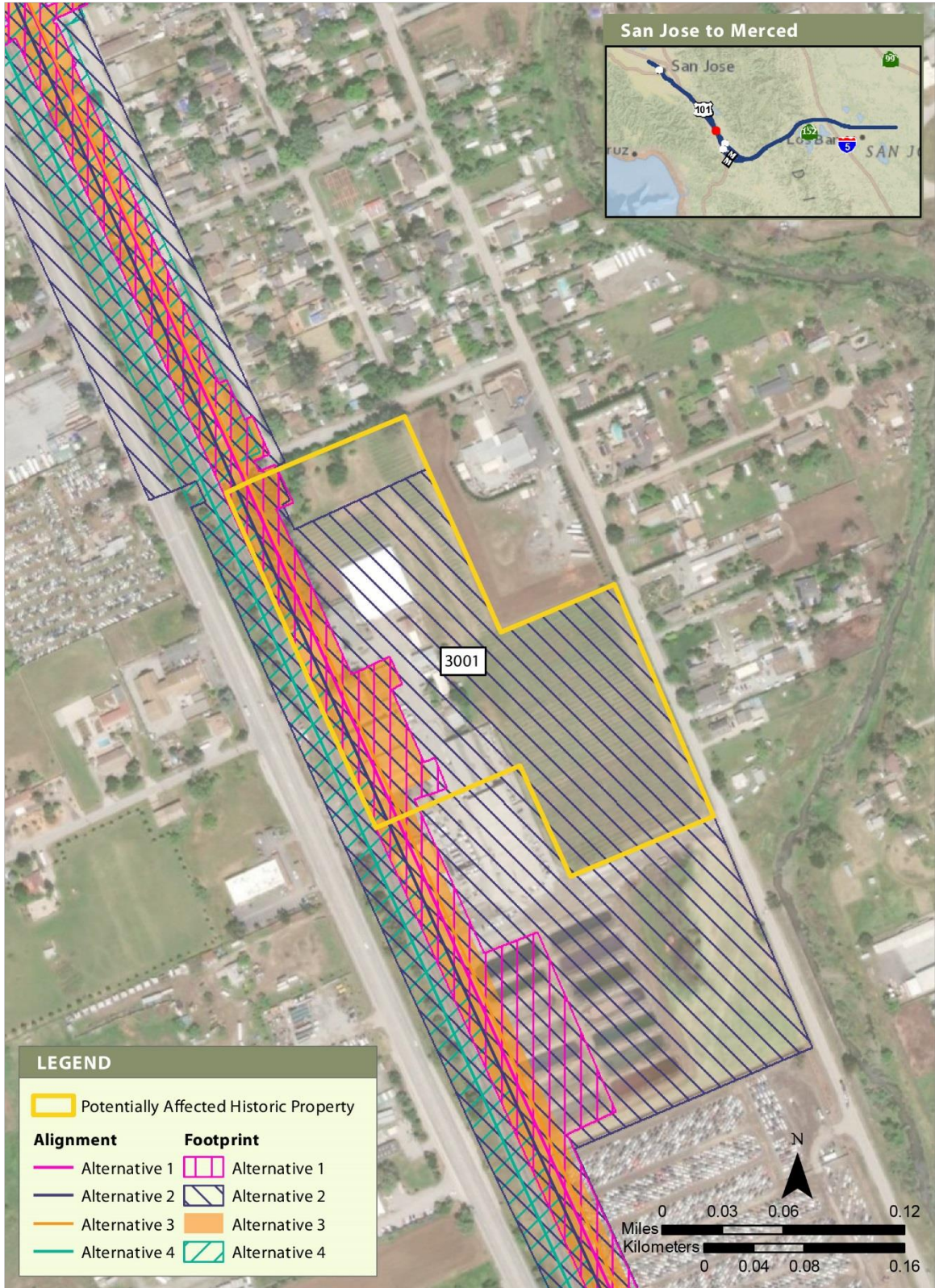
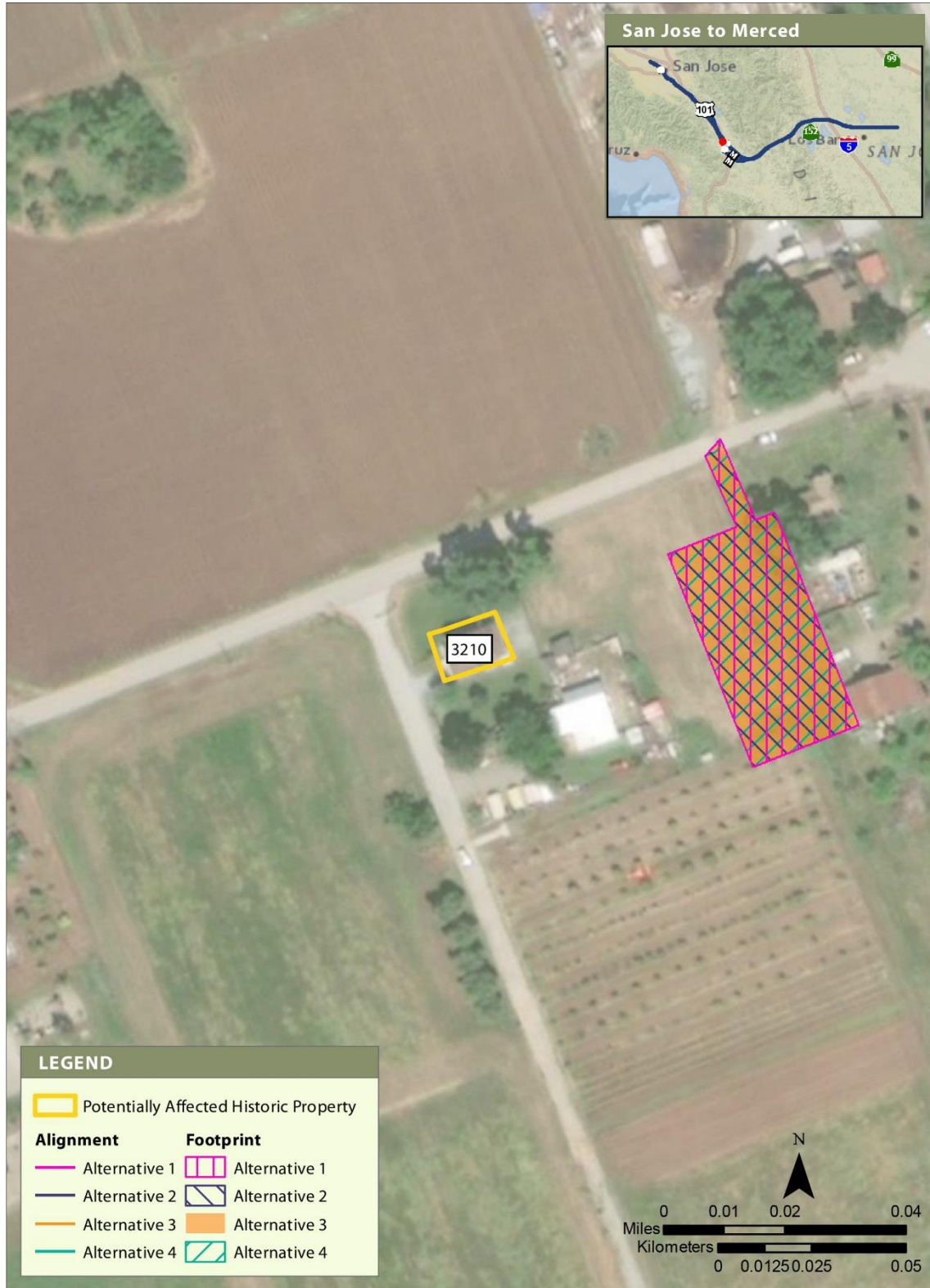
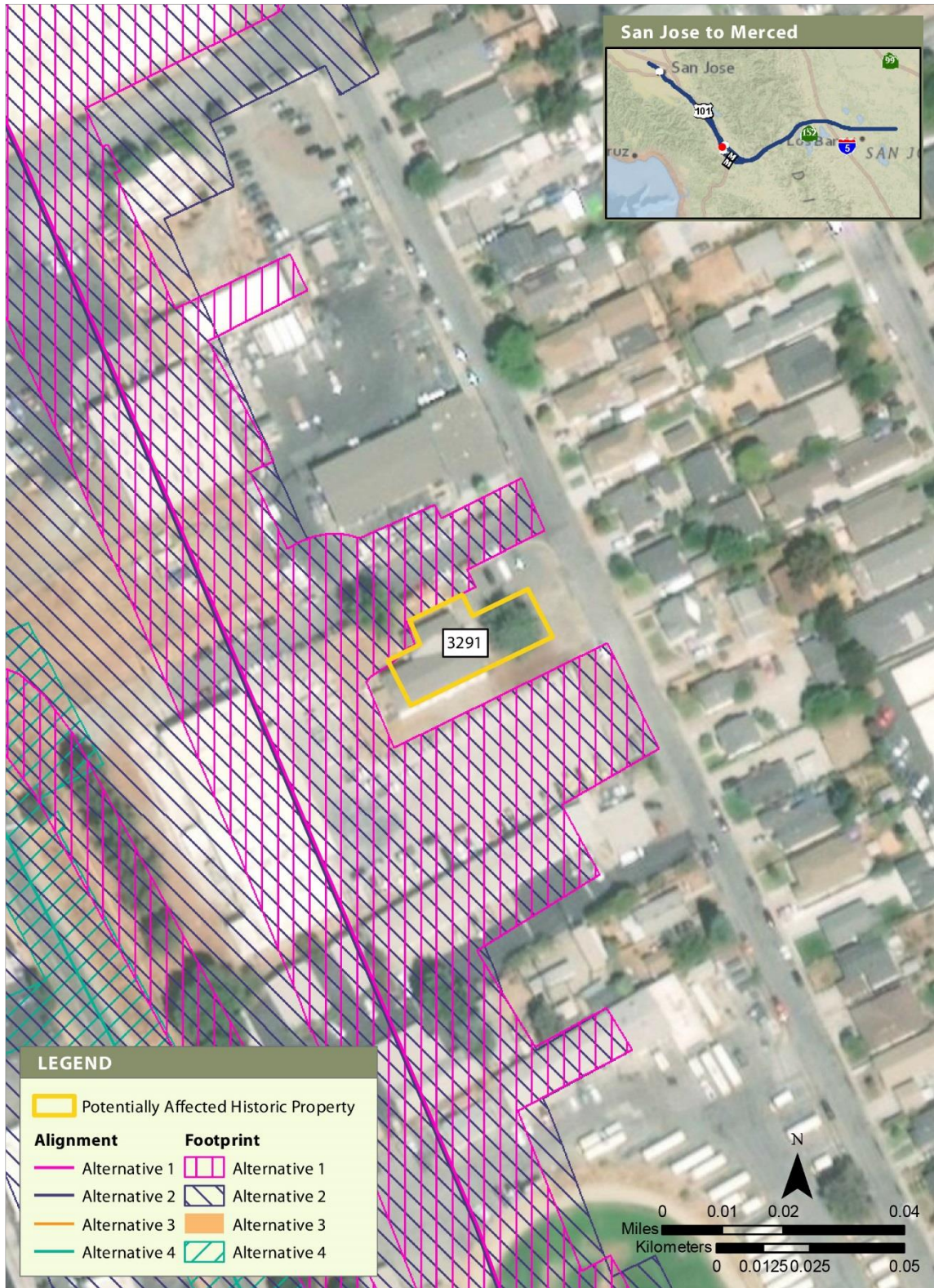


Figure 24 Built Resource Site 3001



APRIL 2019

Figure 25 Built Resource Site 3210



APRIL 2019

**Figure 26 Built Resource Site 3291**

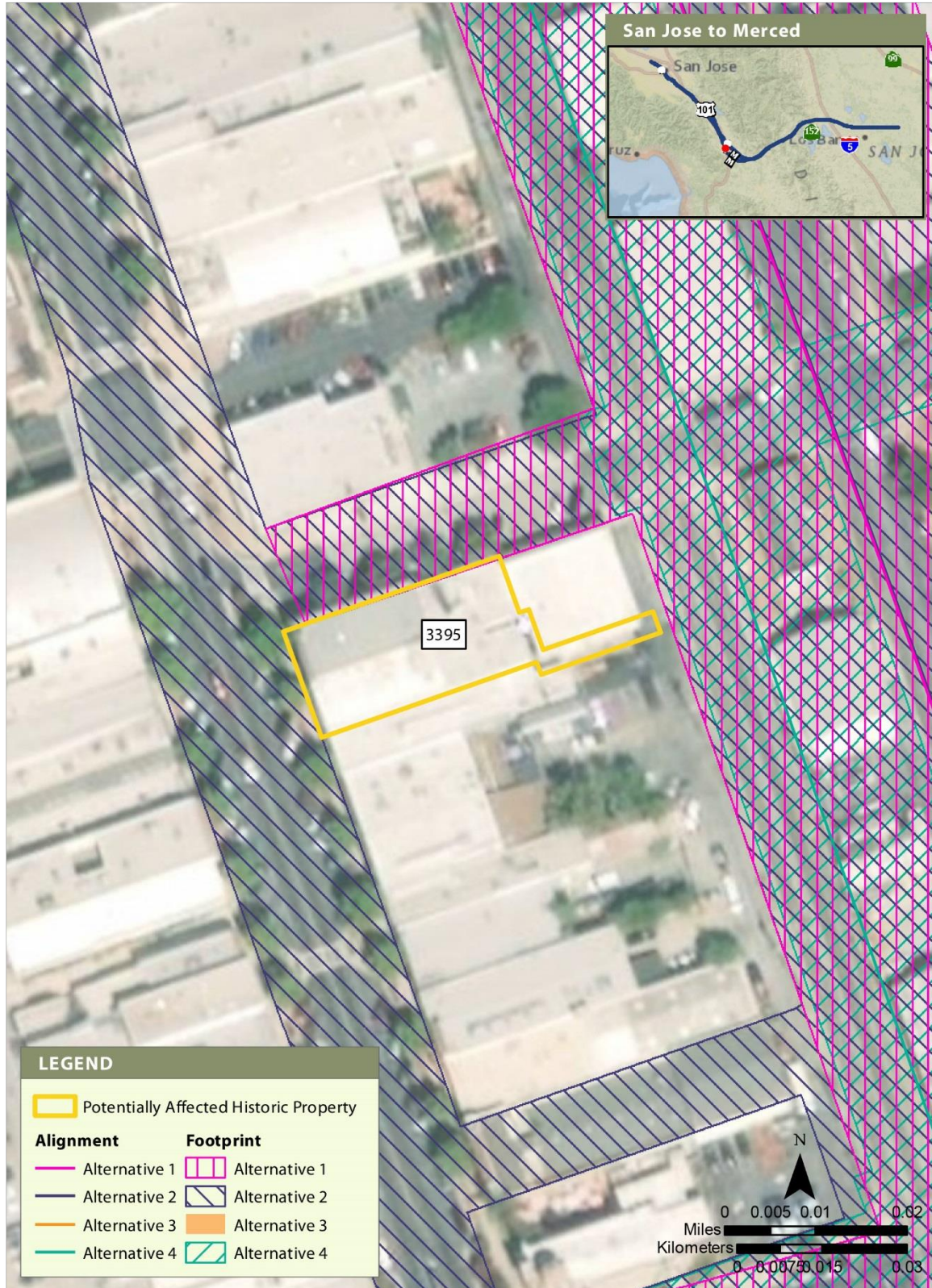
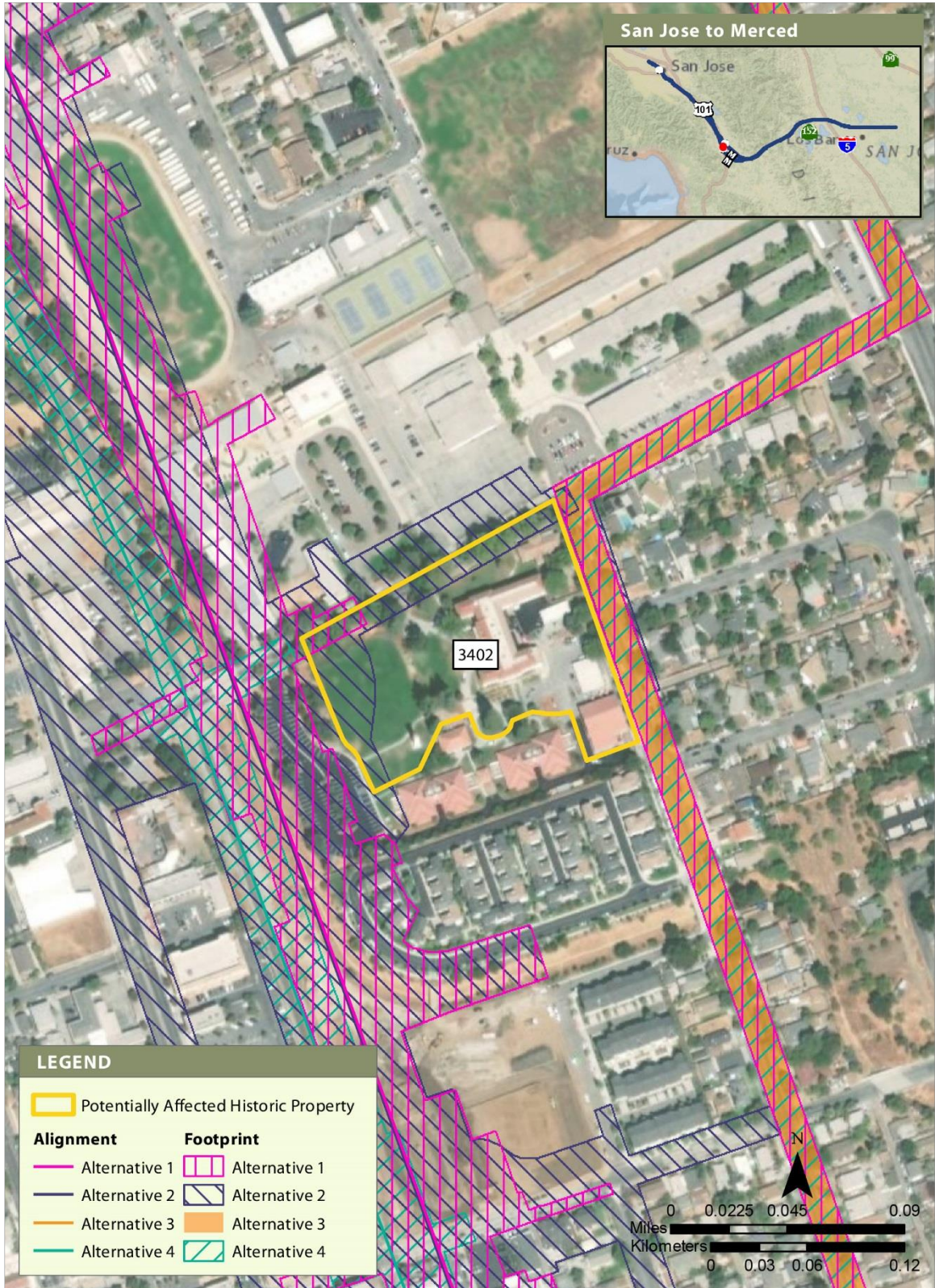
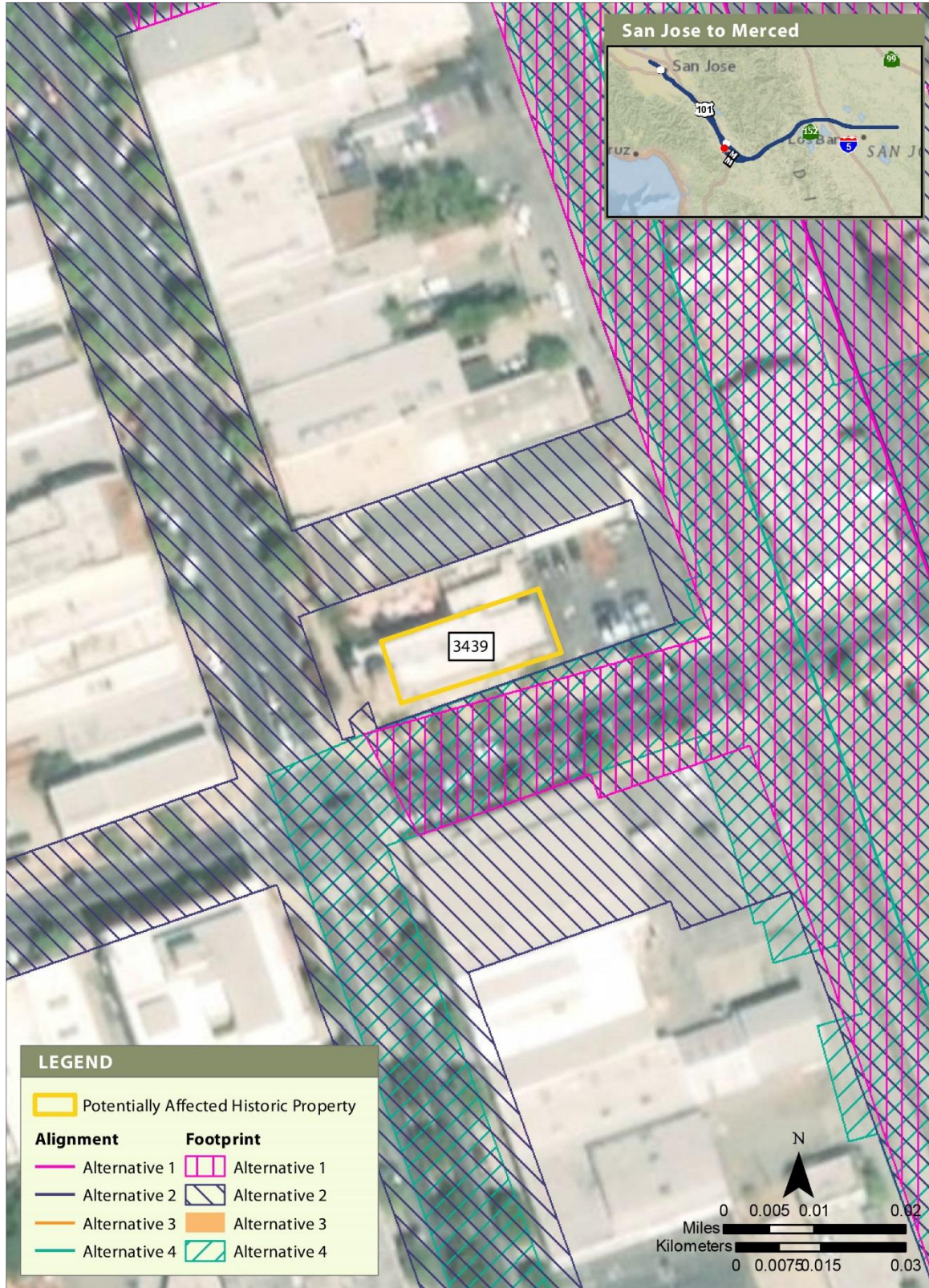


Figure 27 Built Resource Site 3395

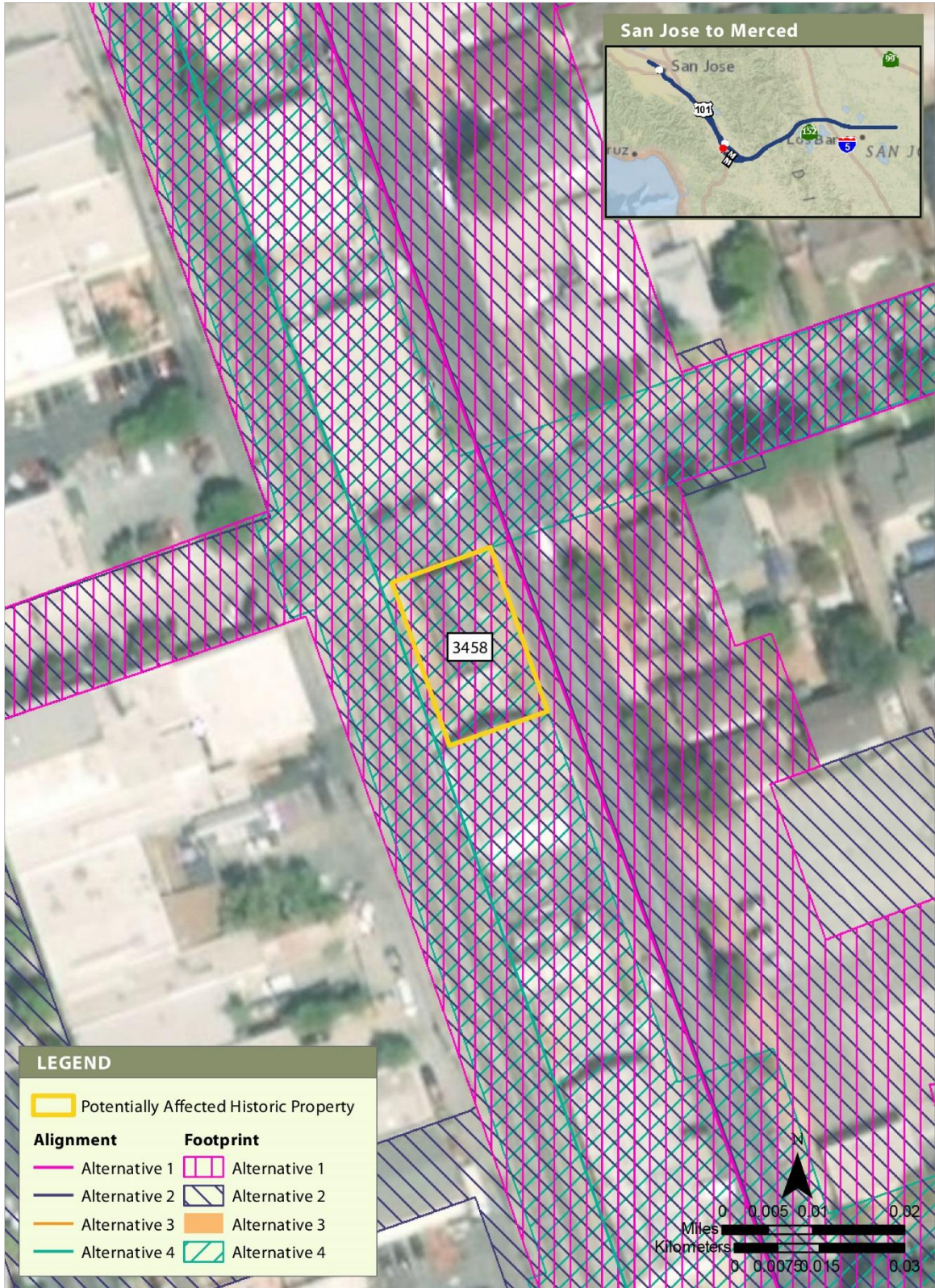


**Figure 28 Built Resource Site 3402**



APRIL 2019

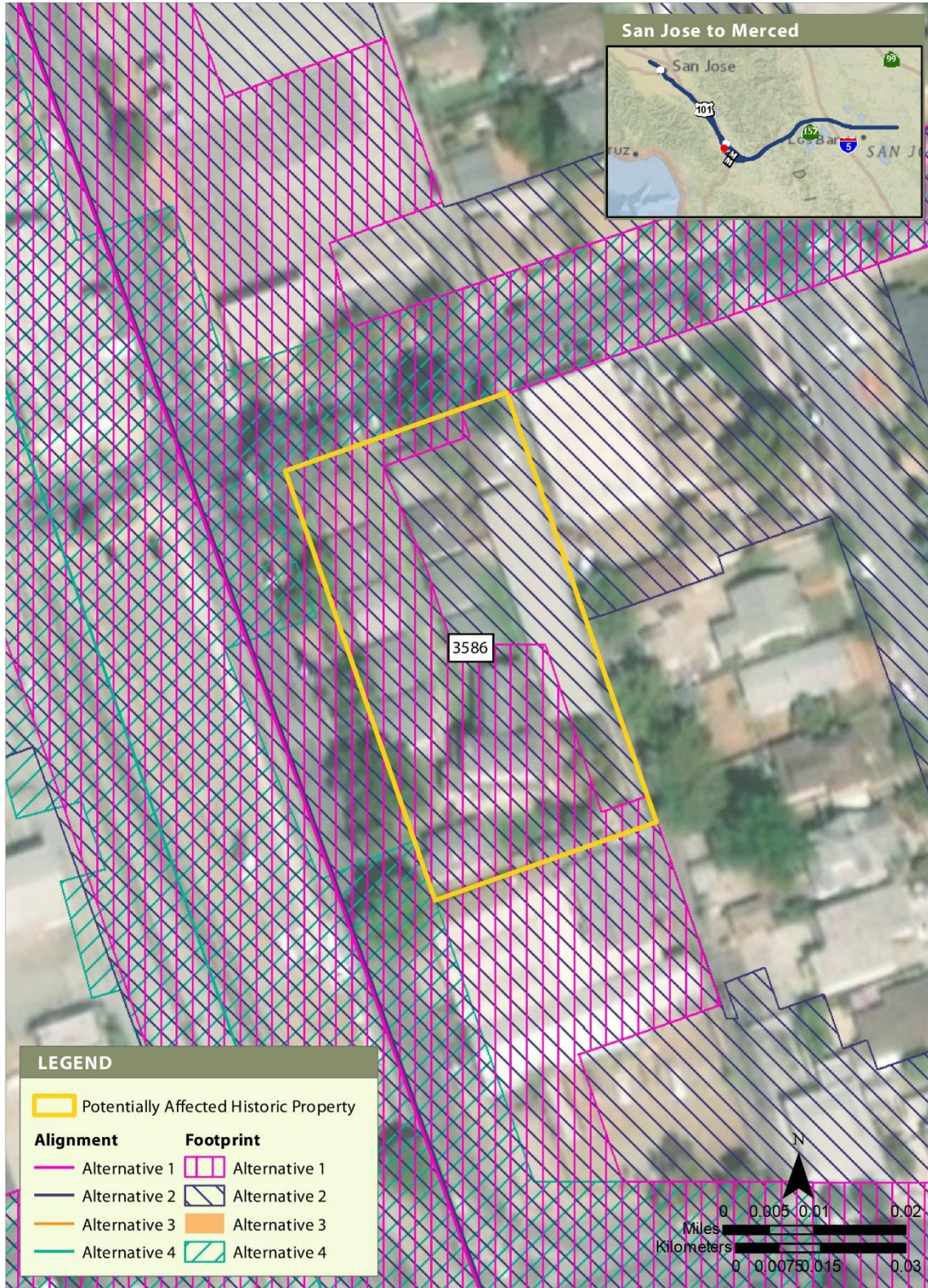
**Figure 29 Built Resource Site 3439**



APRIL 2019

**Figure 30 Built Resource Site 3458**





APRIL 2019

Figure 31 Built Resource Site 3586



APRIL 2019

**Figure 32 Built Resource Site 3610**

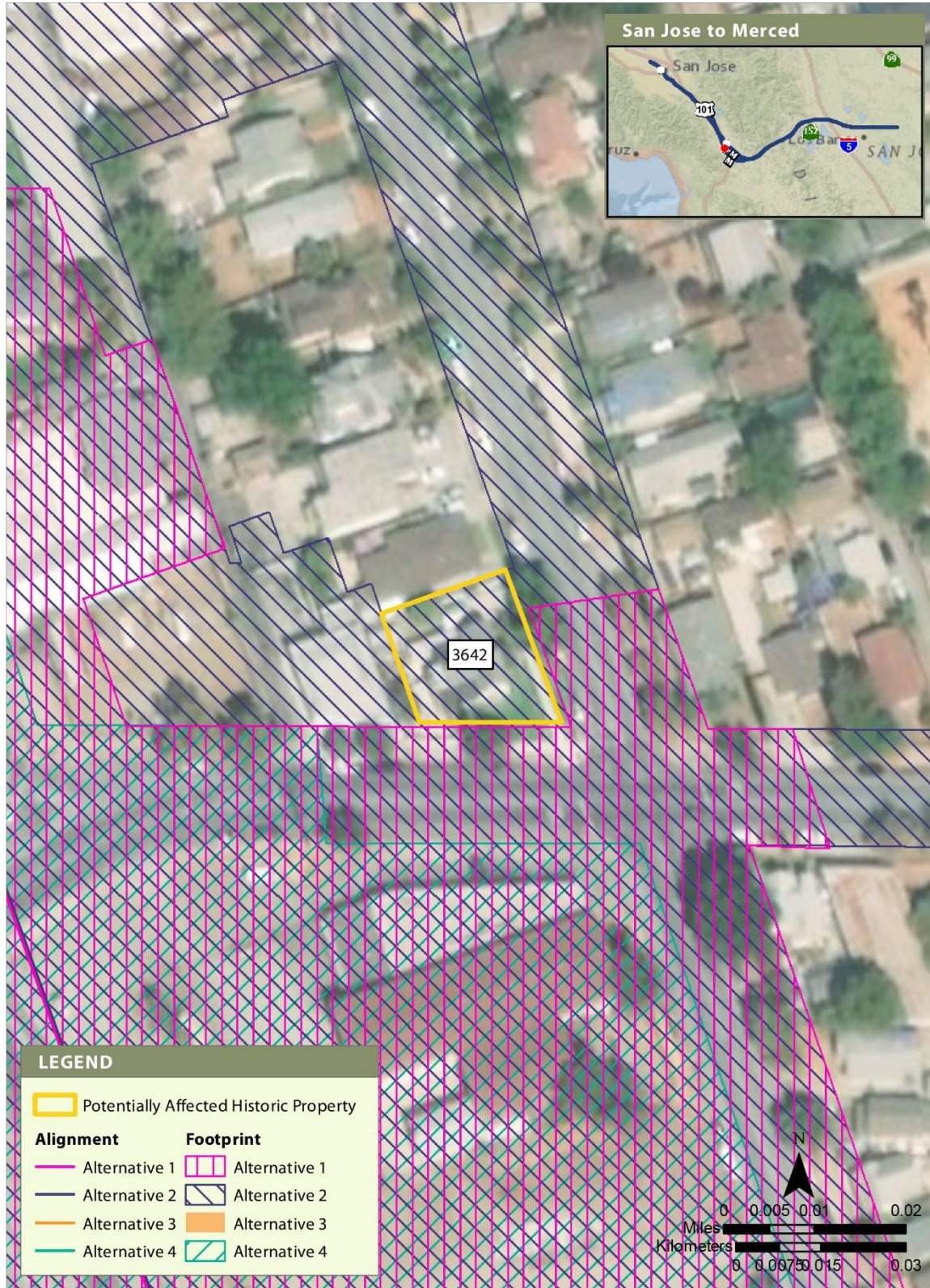


Figure 33 Built Resource Site 3642



APRIL 2019

**Figure 34 Built Resource Site 3855**



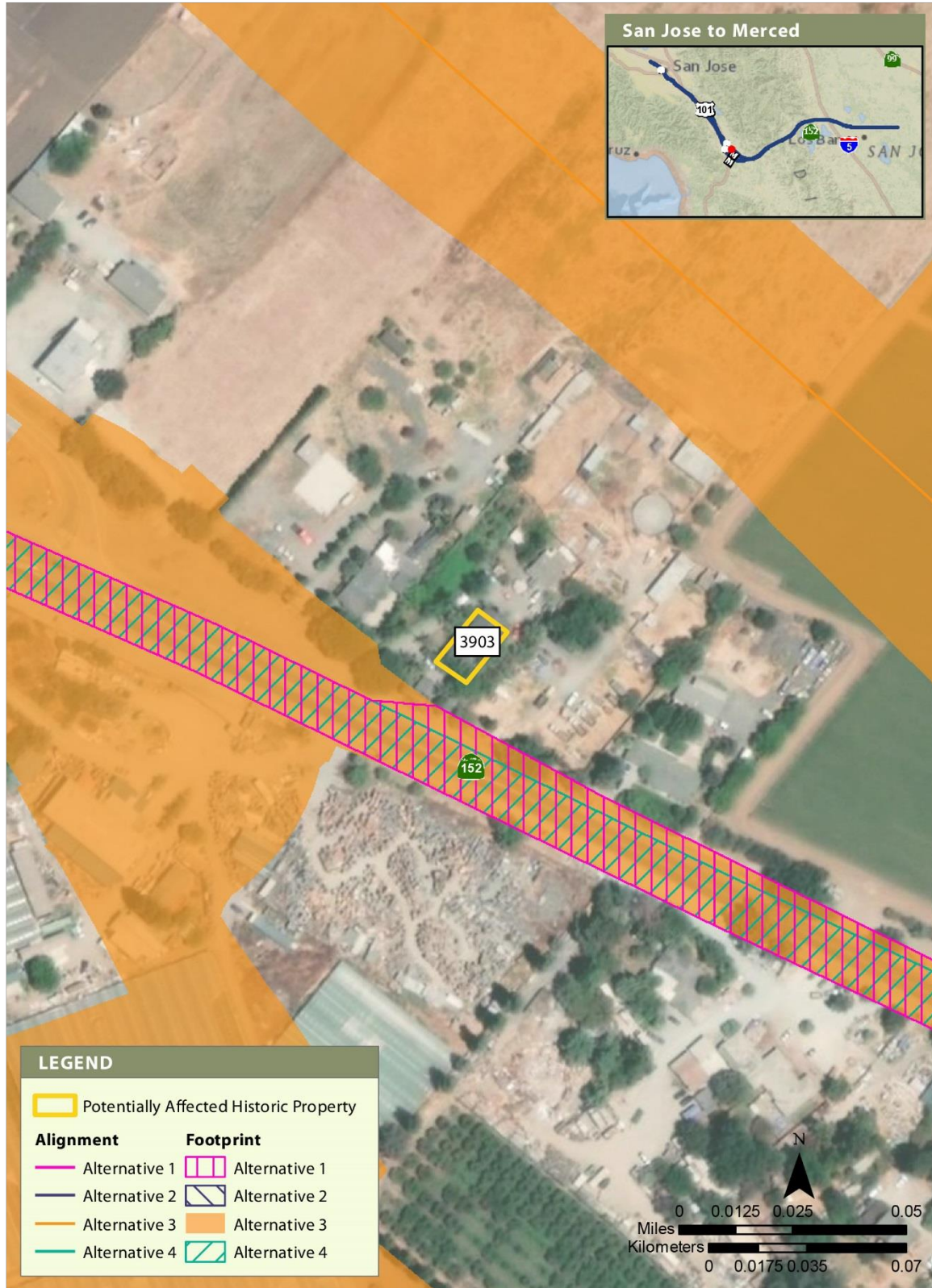
APRIL 2019

**Figure 35 Built Resource Site 3871**



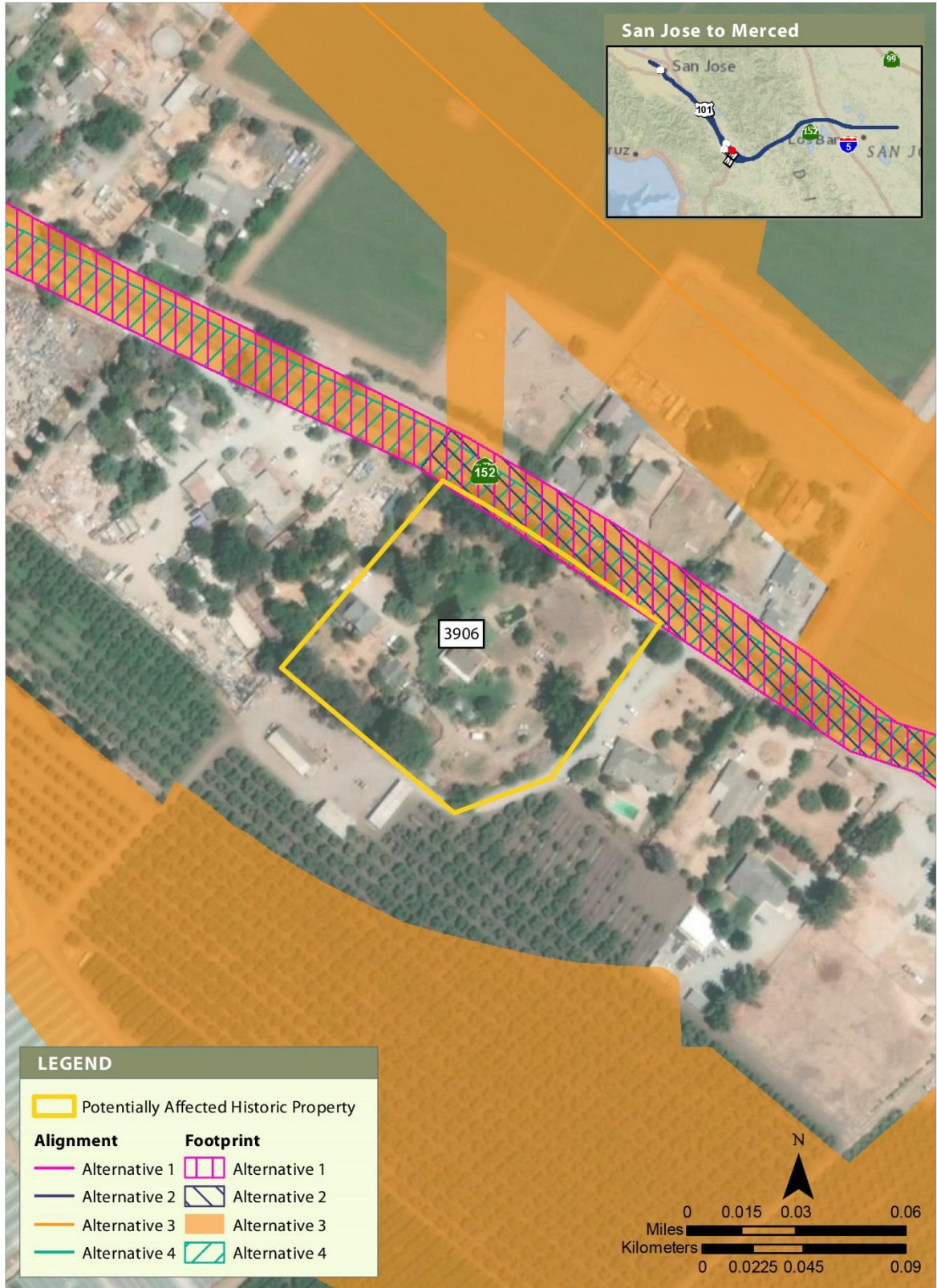
APRIL 2019

**Figure 36 Built Resource Site 3882**



APRIL 2019

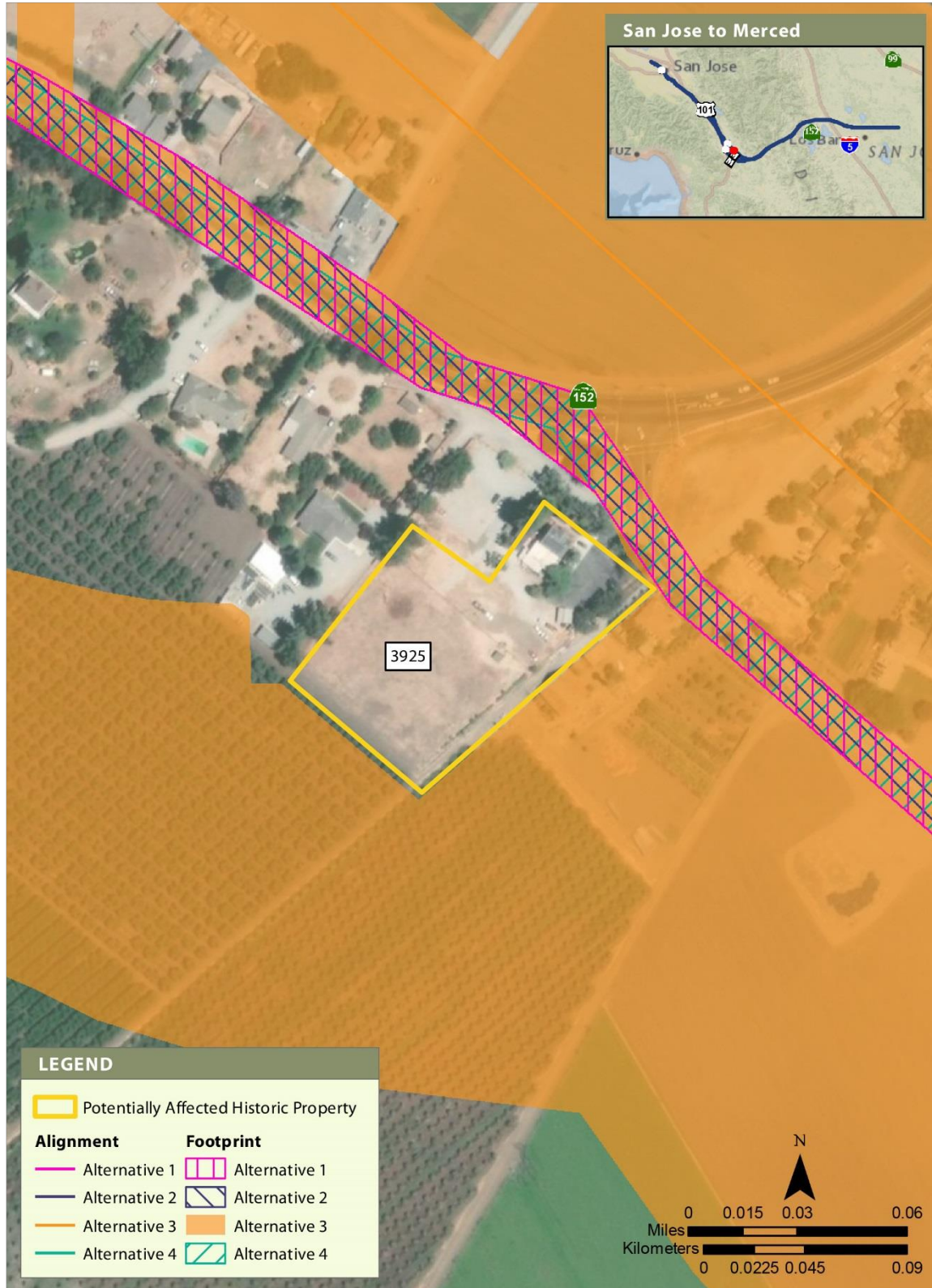
Figure 37 Built Resource Site 3903



APRIL 2019

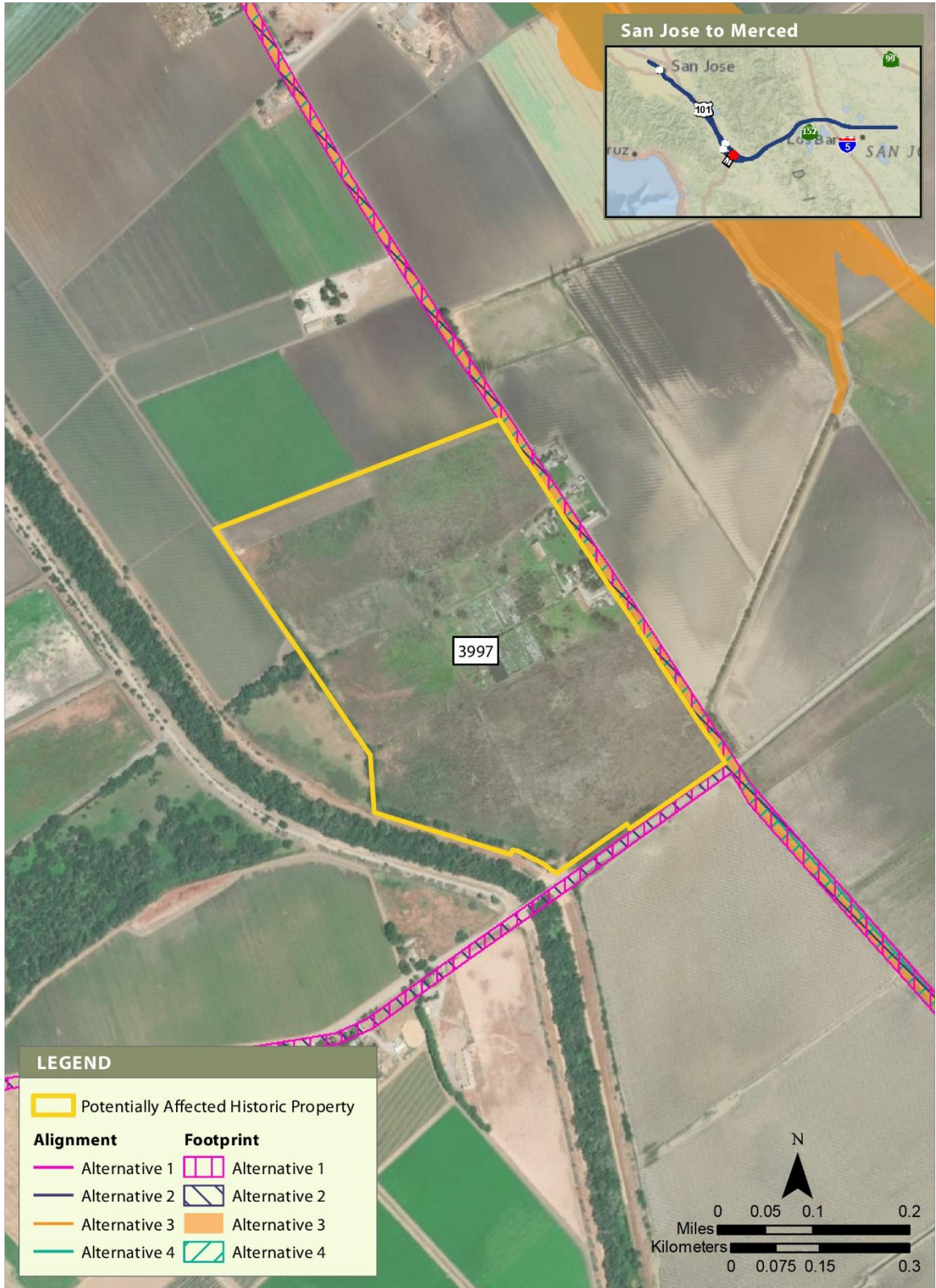
**Figure 38 Built Resource Site 3906**





APRIL 2019

Figure 39 Built Resource Site 3925



APRIL 2019

**Figure 40 Built Resource Site 3997**



APRIL 2019

**Figure 41 Built Resource Site 4024**



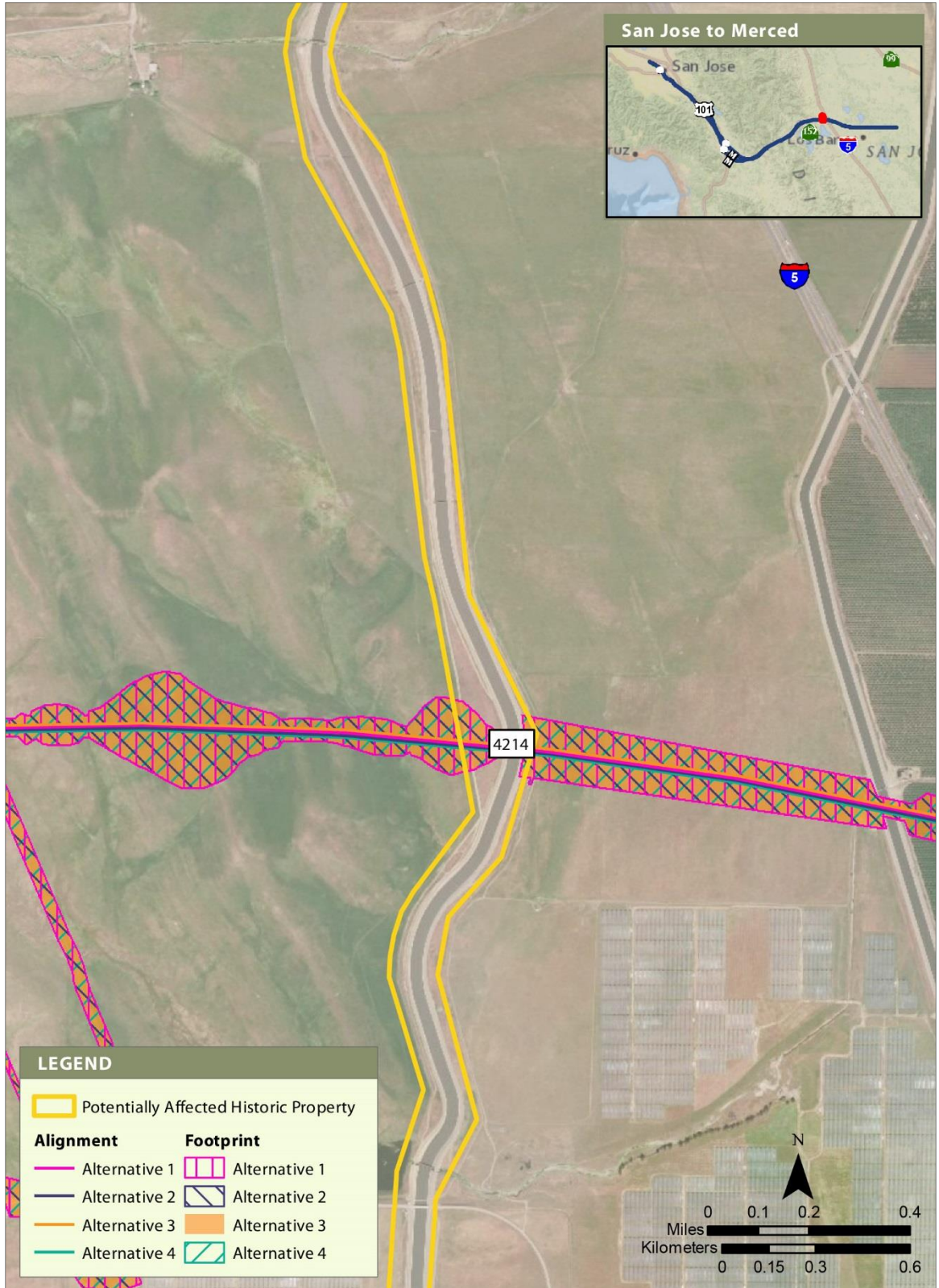
APRIL 2019

**Figure 42 Built Resource Site 4100**



APRIL 2019

**Figure 43 Built Resource Site 4140**



APRIL 2019

**Figure 44 Built Resource Site 4214**

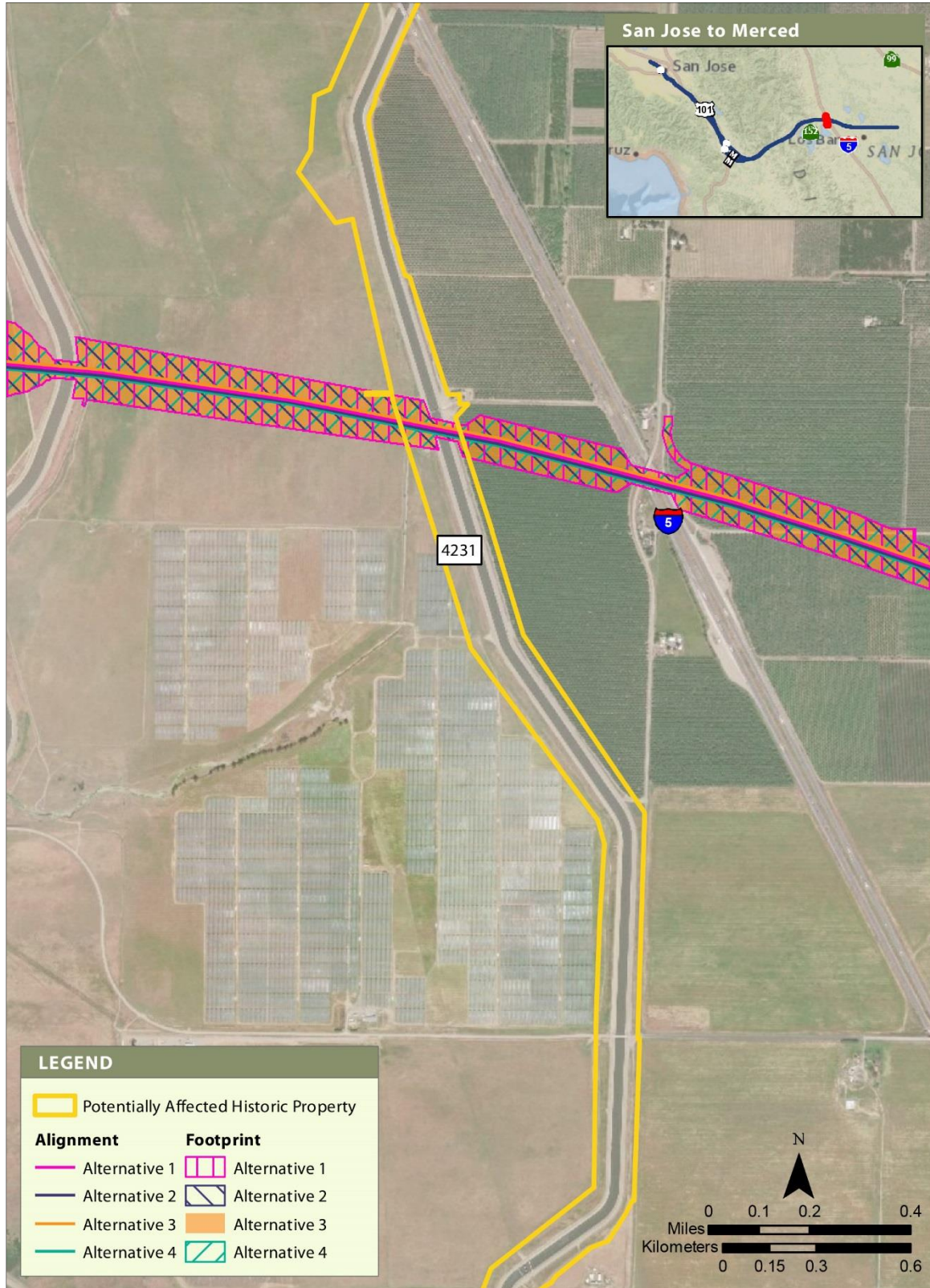
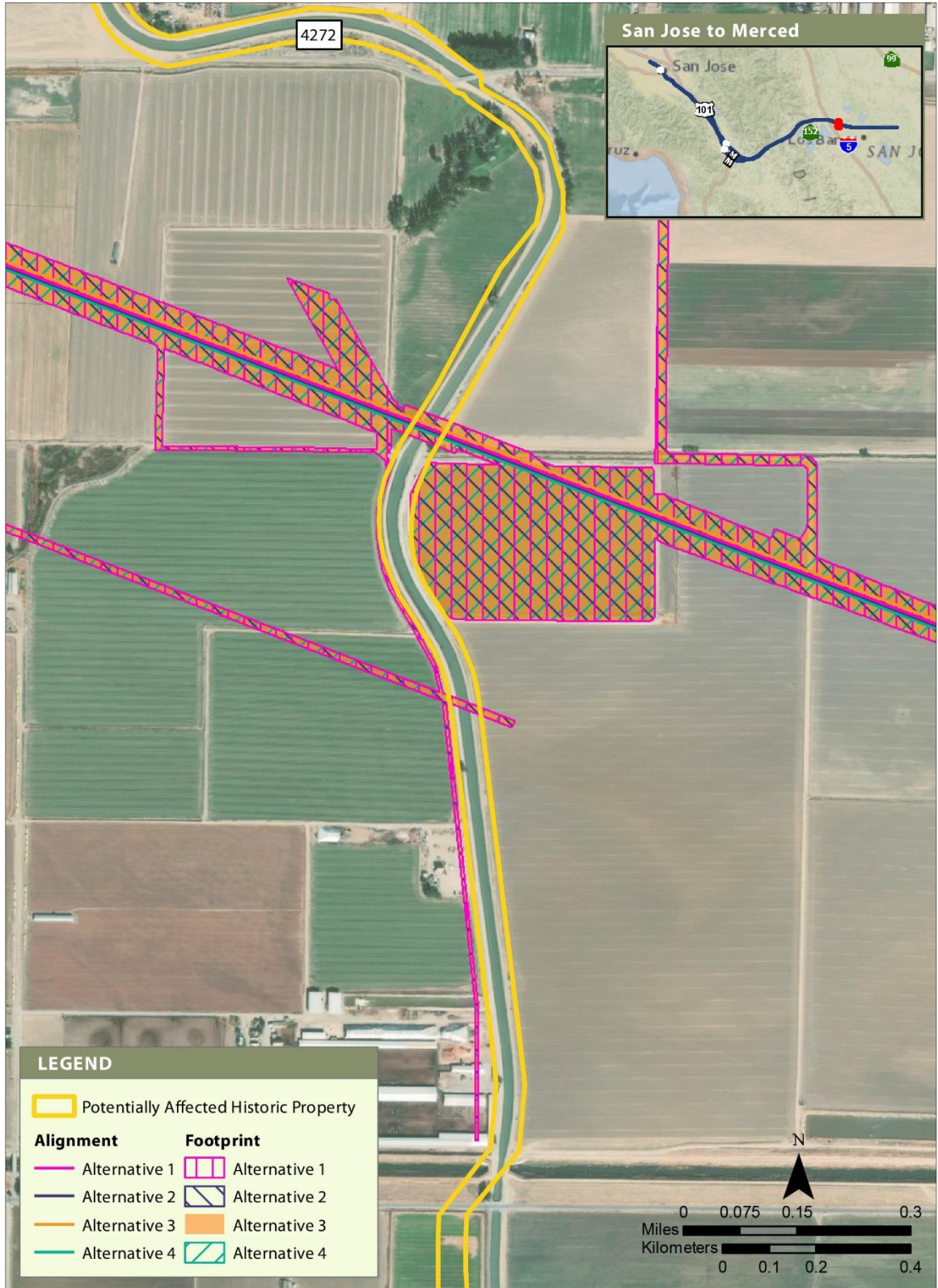


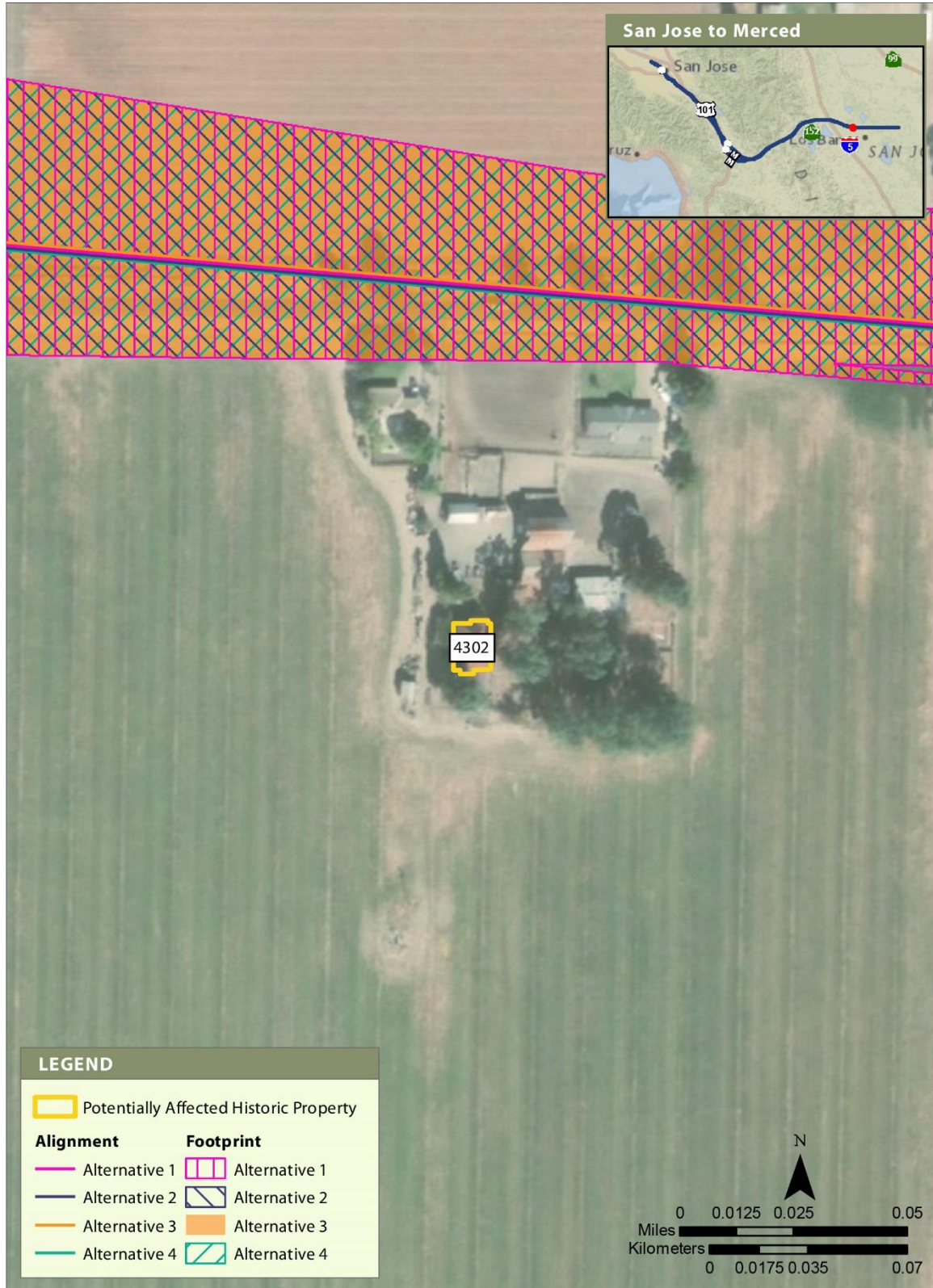
Figure 45 Built Resource Site 4231



APRIL 2019

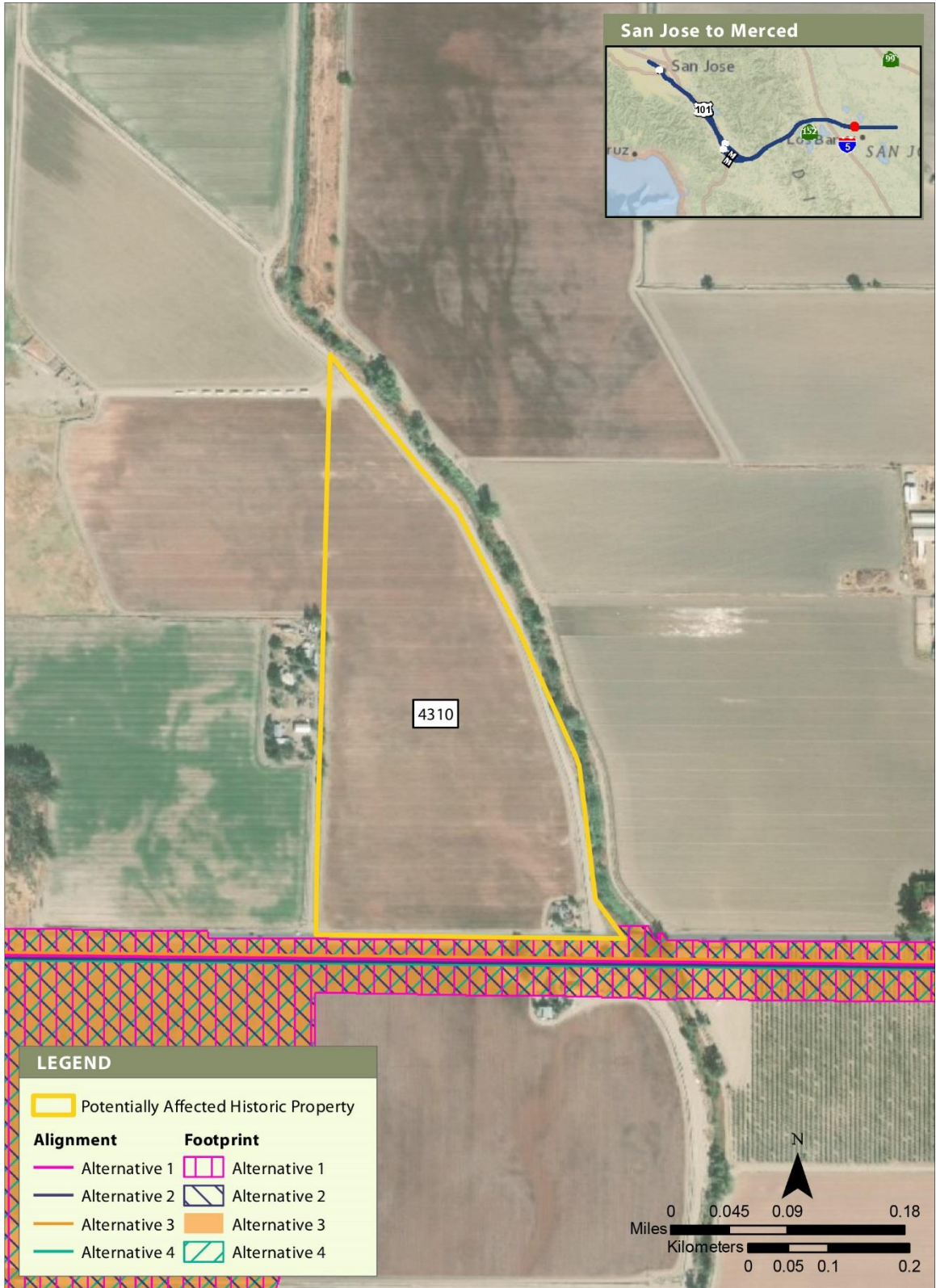
**Figure 46 Built Resource Site 4272**





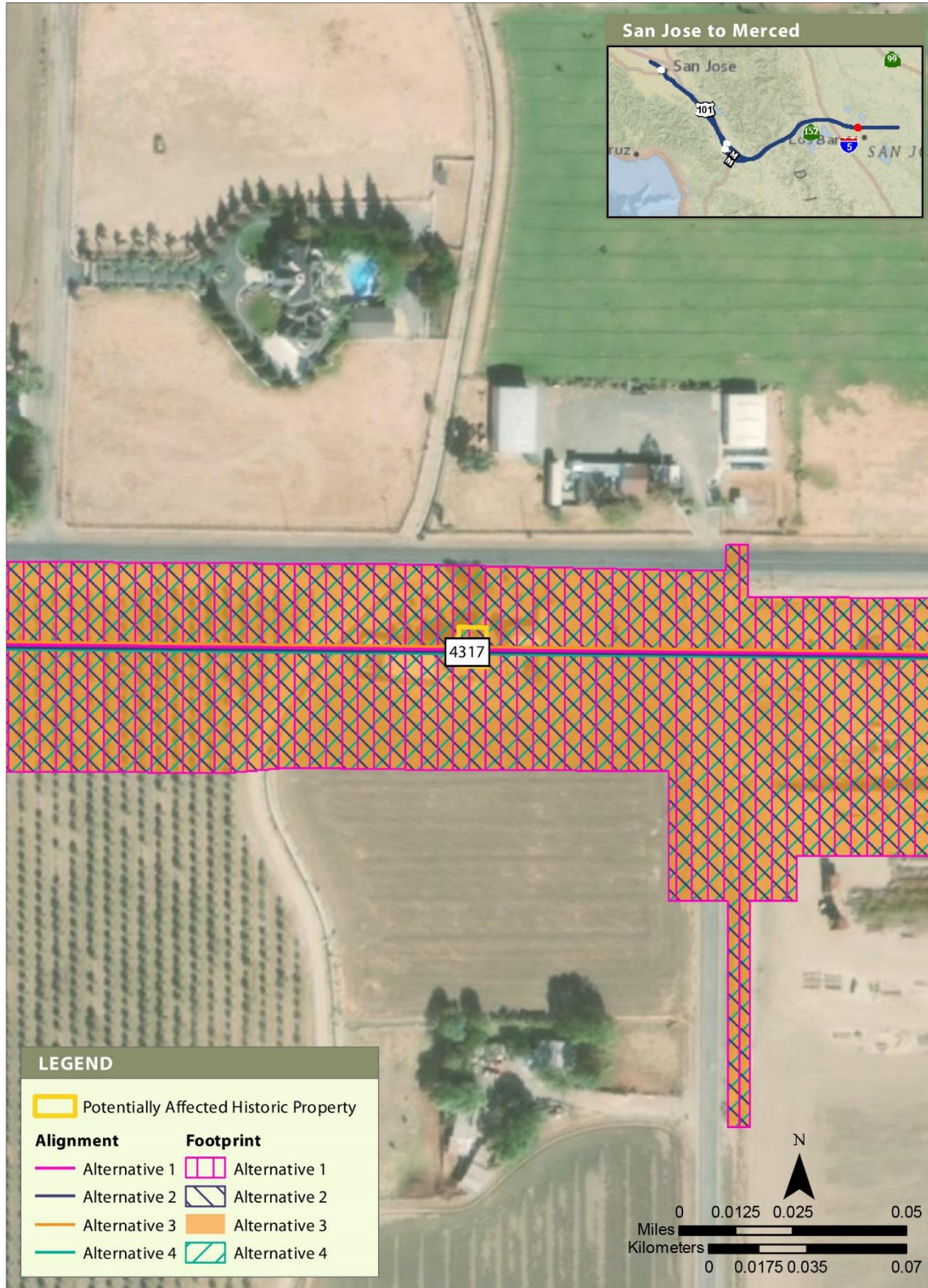
APRIL 2019

Figure 47 Built Resource Site 4302



APRIL 2019

**Figure 48 Built Resource Site 4310**



APRIL 2019

**Figure 49 Built Resource Site 4317**



APRIL 2019

**Figure 50 Built Resource Site 4594**



**Figure 51 Built Resource Site 4652**