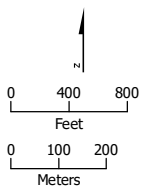


APPENDIX 3.1-A: PARCELS WITHIN THE HSR PROJECT FOOTPRINT (Alternative 4, Part 1)



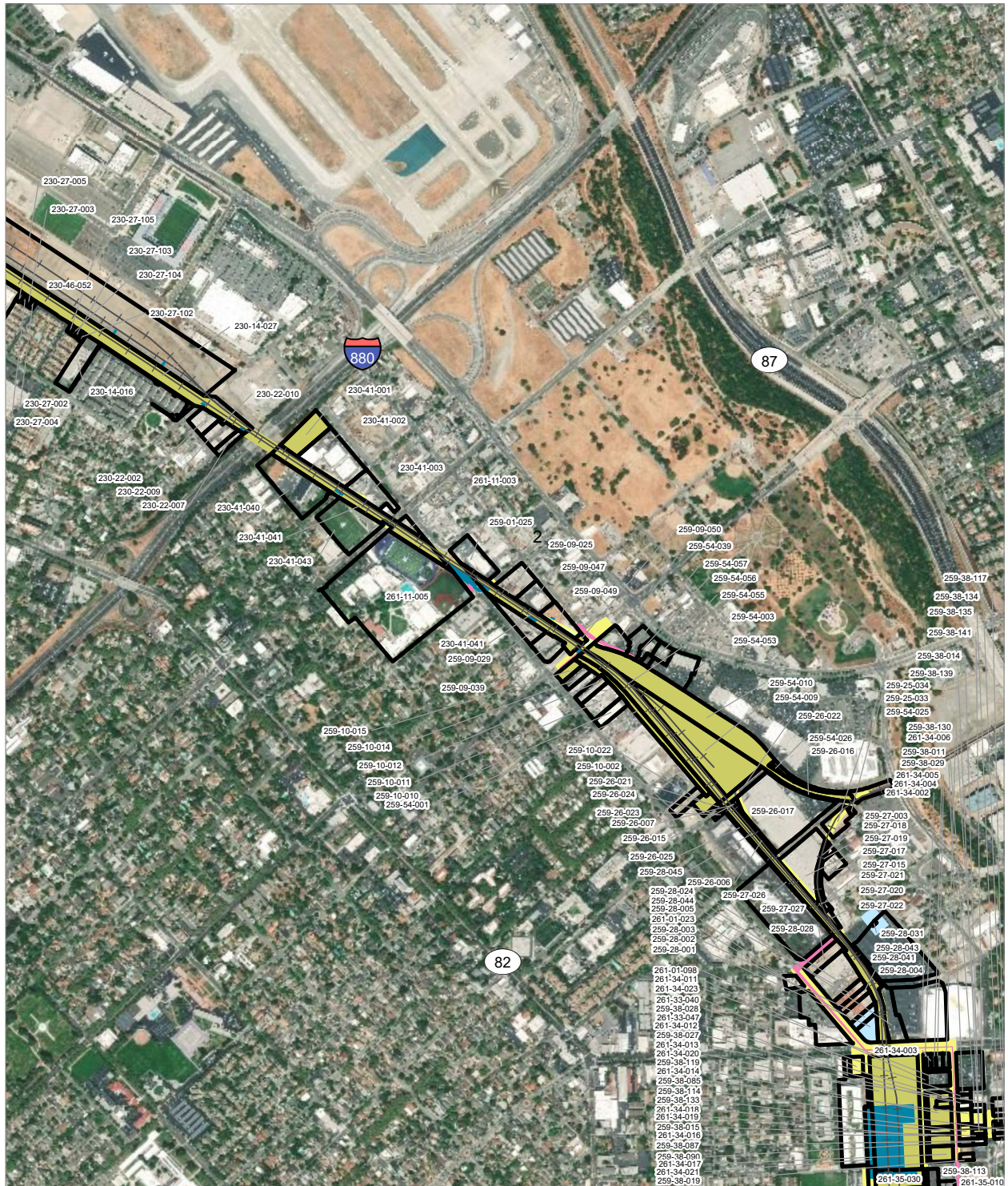
PRELIMINARY DRAFT/SUBJECT TO CHANGE - HSR ALIGNMENT IS NOT DETERMINED
 SOURCE: ESRI, 2019; Santa Clara County, 2016; San Mateo County, 2016, San Francisco County, 2016



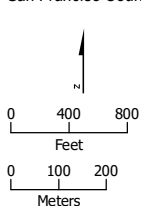
- HSR Right-of-Way
- Temporary Construction Easement
- HSR Permanent Easement
- Parcel (APN Displayed)

Alternative 4





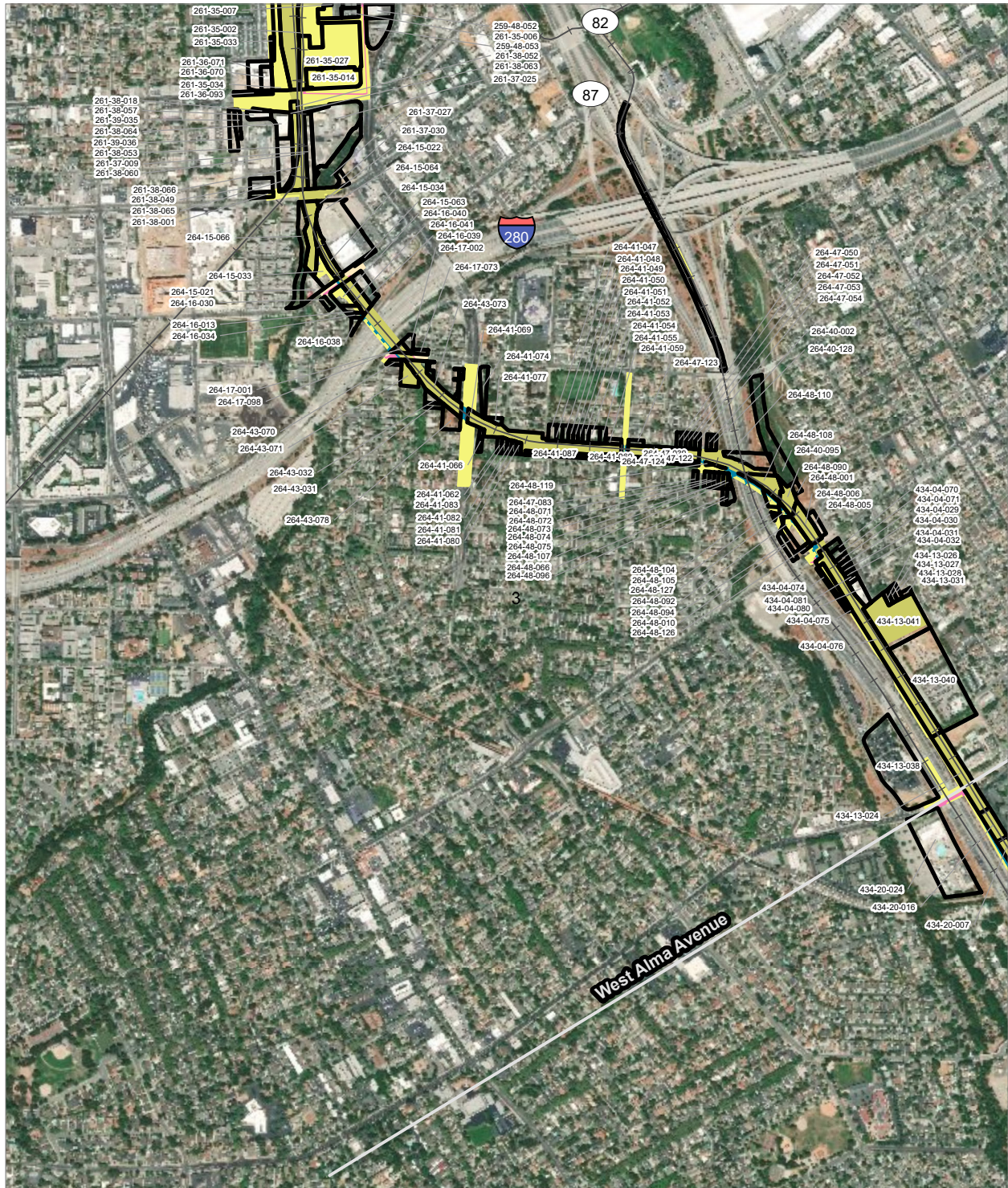
PRELIMINARY DRAFT/SUBJECT TO CHANGE - HSR ALIGNMENT IS NOT DETERMINED
 SOURCE: ESRI, 2019; Santa Clara County, 2016; San Mateo County, 2016, San Francisco County, 2016



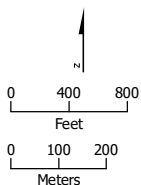
- HSR Right-of-Way
- Other Right-of-Way
- Roadway Right-of-Way
- Rail Right-of-Way
- HSR Permanent Easement
- Permanent Utility Easement
- Temporary Construction Easement
- Temporary Utility Easement
- Parcel (APN Displayed)

Alternative 4





PRELIMINARY DRAFT/SUBJECT TO CHANGE - HSR ALIGNMENT IS NOT DETERMINED
 SOURCE: ESRI, 2019; Santa Clara County, 2016; San Mateo County, 2016, San Francisco County, 2016



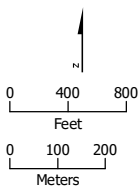
- HSR Right-of-Way
- Roadway Right-of-Way
- HSR Permanent Easement
- Permanent Utility Easement
- Temporary Construction Easement
- Parcel (APN Displayed)

Alternative 4





PRELIMINARY DRAFT/SUBJECT TO CHANGE - HSR ALIGNMENT IS NOT DETERMINED
 SOURCE: ESRI, 2019; Santa Clara County, 2016; San Mateo County, 2016; San Francisco County, 2016



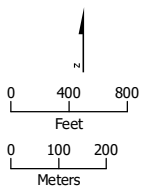
- | | |
|--|---|
| HSR Right-of-Way | Permanent Utility Easement |
| Roadway Right-of-Way | Temporary Construction Easement |
| HSR Permanent Easement | Temporary Utility Easement |
| Parcel (APN Displayed) | |



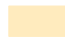
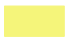



Alternative 4





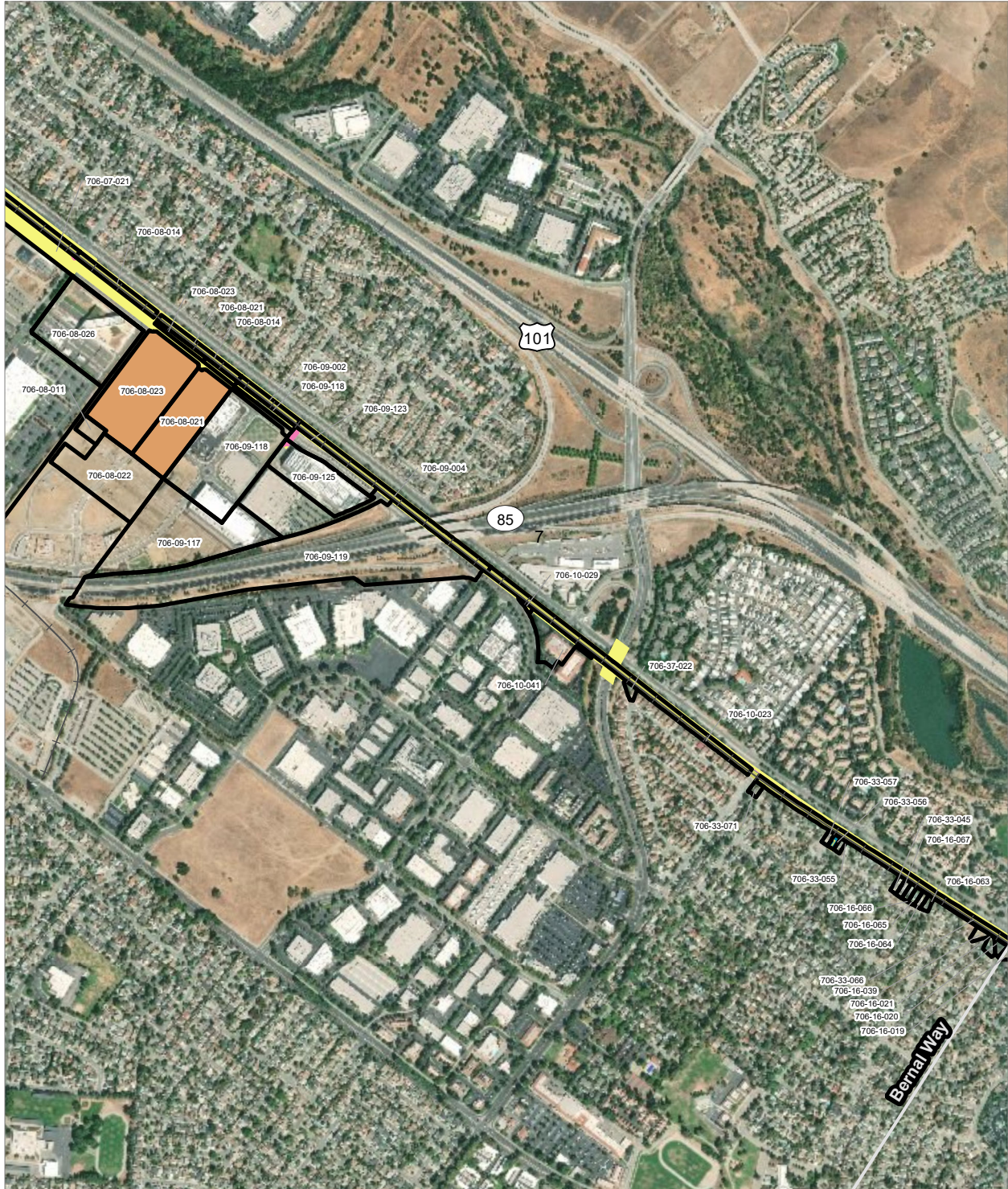
PRELIMINARY DRAFT/SUBJECT TO CHANGE - HSR ALIGNMENT IS NOT DETERMINED
 SOURCE: ESRI, 2019; Santa Clara County, 2016; San Mateo County, 2016; San Francisco County, 2016



- | | |
|--|---|
|  HSR Right-of-Way |  Permanent Utility Easement |
|  Roadway Right-of-Way |  Temporary Construction Easement |
|  HSR Permanent Easement |  Temporary Utility Easement |
|  Parcel (APN Displayed) | |

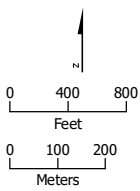
Alternative 4





PRELIMINARY DRAFT/SUBJECT TO CHANGE - HSR ALIGNMENT IS NOT DETERMINED
 SOURCE: ESRI, 2019; Santa Clara County, 2016; San Mateo County, 2016, San Francisco County, 2016

Alternative 4

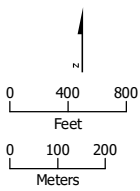


- HSR Right-of-Way
- HSR Permanent Easement
- Permanent Utility Easement
- Temporary Construction Easement
- Temporary Utility Easement
- Non-Viable Remnant Parcel
- Parcel (APN Displayed)





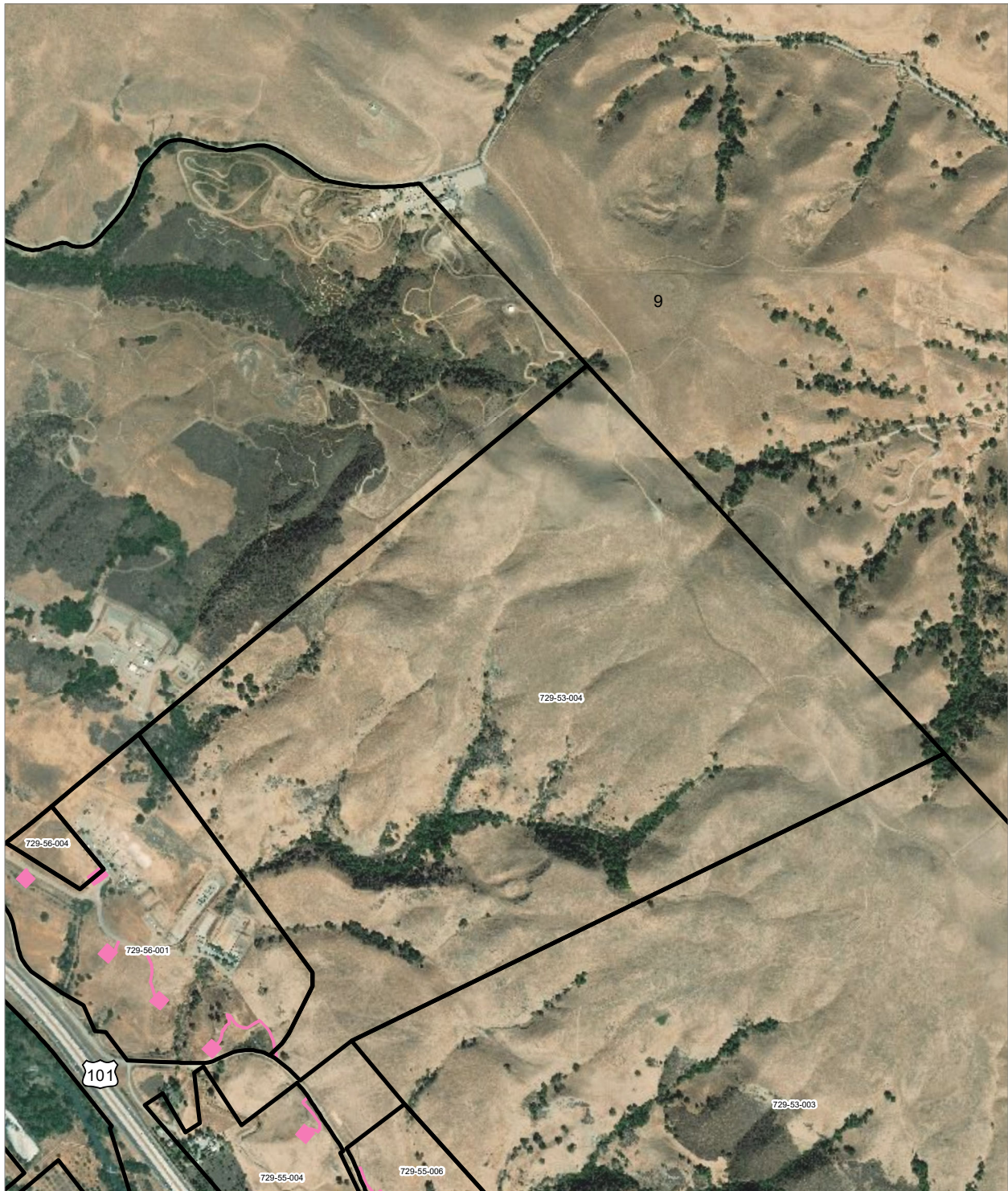
PRELIMINARY DRAFT/SUBJECT TO CHANGE - HSR ALIGNMENT IS NOT DETERMINED
 SOURCE: ESRI, 2019; Santa Clara County, 2016; San Mateo County, 2016; San Francisco County, 2016



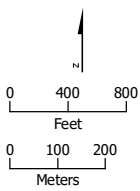
- HSR Right-of-Way
- Other Right-of-Way
- Roadway Right-of-Way
- HSR Permanent Easement
- Permanent Utility Easement
- Temporary Construction Easement
- Temporary Utility Easement
- Parcel (APN Displayed)

Alternative 4





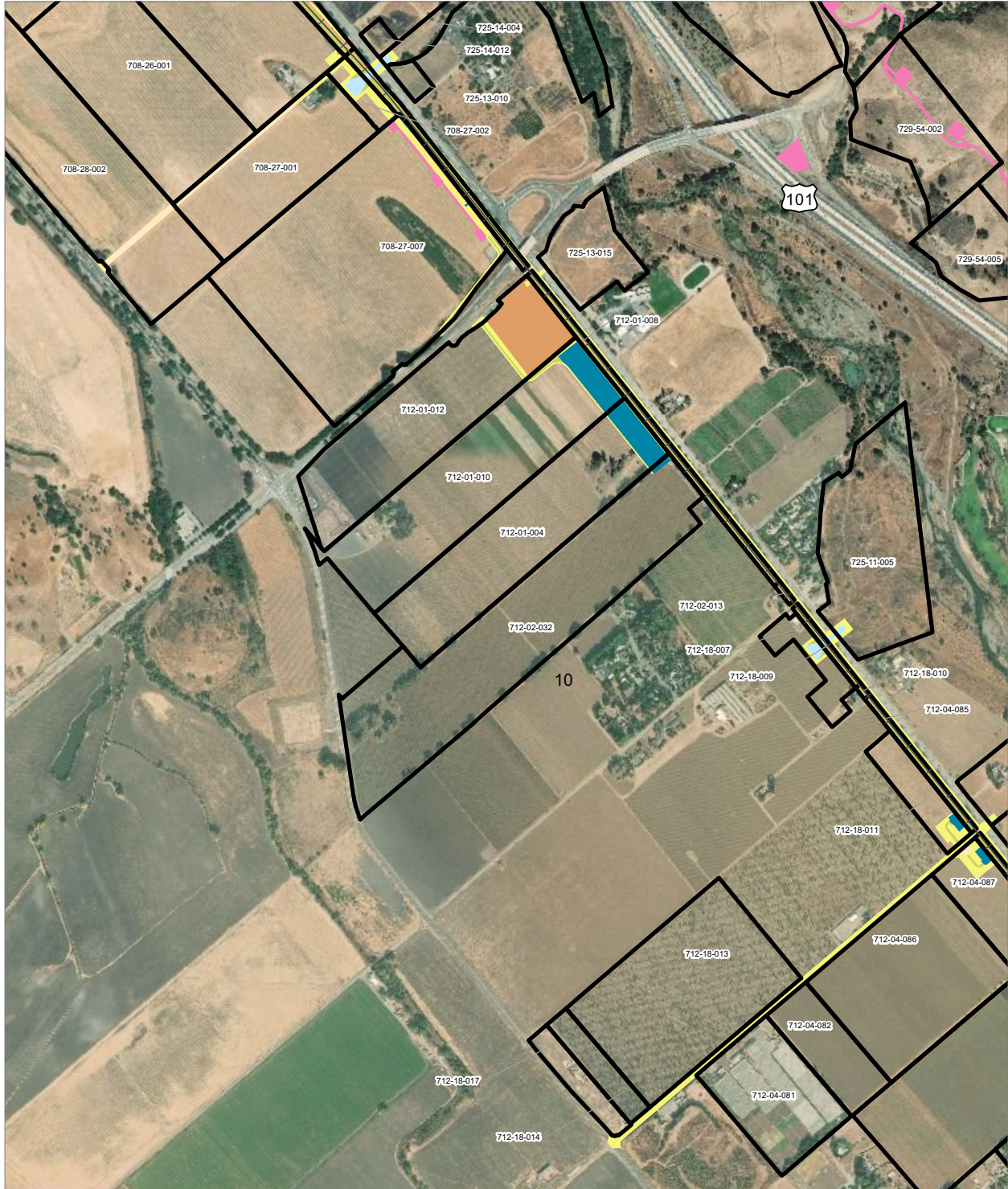
PRELIMINARY DRAFT/SUBJECT TO CHANGE - HSR ALIGNMENT IS NOT DETERMINED
 SOURCE: ESRI, 2019; Santa Clara County, 2016; San Mateo County, 2016, San Francisco County, 2016



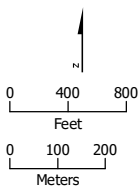
- Permanent Utility Easement
- Parcel (APN Displayed)

Alternative 4





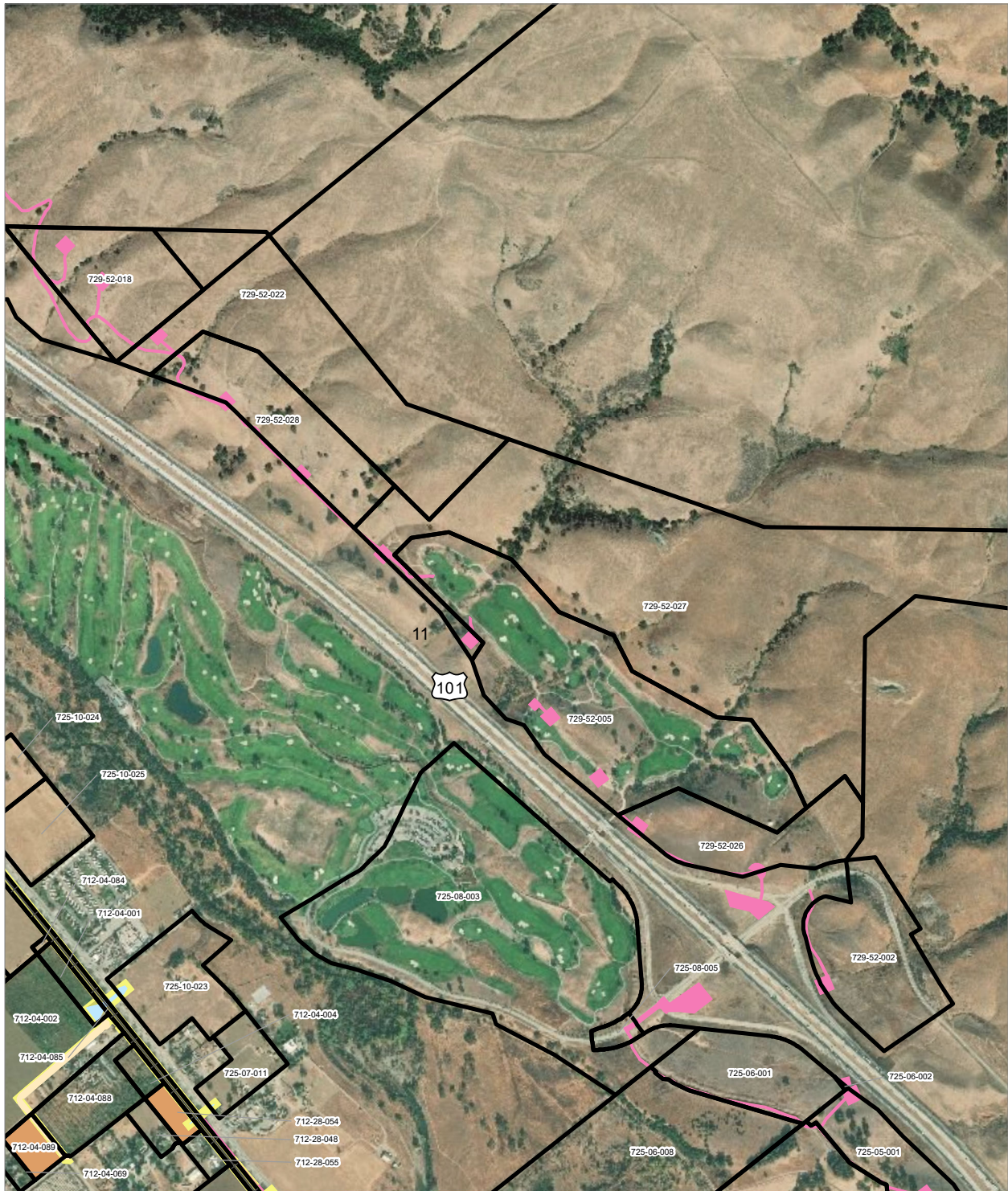
PRELIMINARY DRAFT/SUBJECT TO CHANGE - HSR ALIGNMENT IS NOT DETERMINED
 SOURCE: ESRI, 2019; Santa Clara County, 2016; San Mateo County, 2016, San Francisco County, 2016



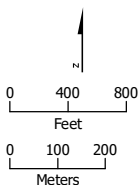
- HSR Right-of-Way
- Other Right-of-Way
- Roadway Right-of-Way
- HSR Permanent Easement
- Permanent Utility Easement
- Temporary Construction Easement
- Temporary Utility Easement
- Non-Viable Remnant Parcel
- Parcel (APN Displayed)



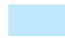





Alternative 4





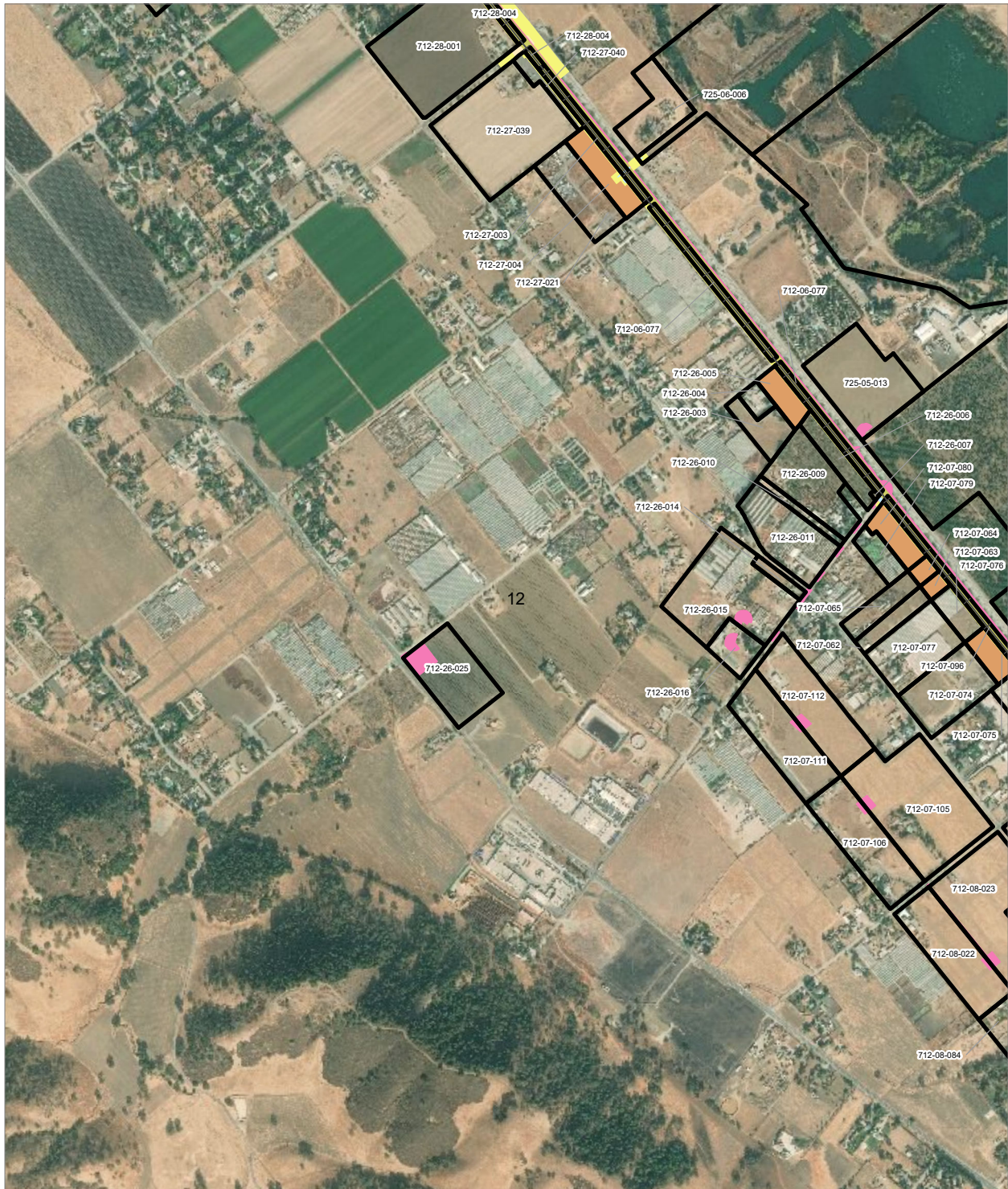
PRELIMINARY DRAFT/SUBJECT TO CHANGE - HSR ALIGNMENT IS NOT DETERMINED
 SOURCE: ESRI, 2019; Santa Clara County, 2016; San Mateo County, 2016; San Francisco County, 2016



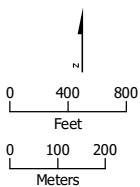
- | | |
|--|---|
|  HSR Right-of-Way |  Permanent Utility Easement |
|  Other Right-of-Way |  Temporary Construction Easement |
|  Roadway Right-of-Way |  Non-Viable Remnant Parcel |
|  HSR Permanent Easement |  Parcel (APN Displayed) |



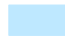





Alternative 4





PRELIMINARY DRAFT/SUBJECT TO CHANGE - HSR ALIGNMENT IS NOT DETERMINED
 SOURCE: ESRI, 2019; Santa Clara County, 2016; San Mateo County, 2016, San Francisco County, 2016



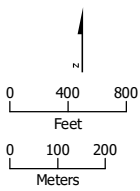
- | | |
|--|---|
|  HSR Right-of-Way |  Permanent Utility Easement |
|  Other Right-of-Way |  Temporary Construction Easement |
|  Roadway Right-of-Way |  Non-Viable Remnant Parcel |
|  HSR Permanent Easement |  Parcel (APN Displayed) |

Alternative 4





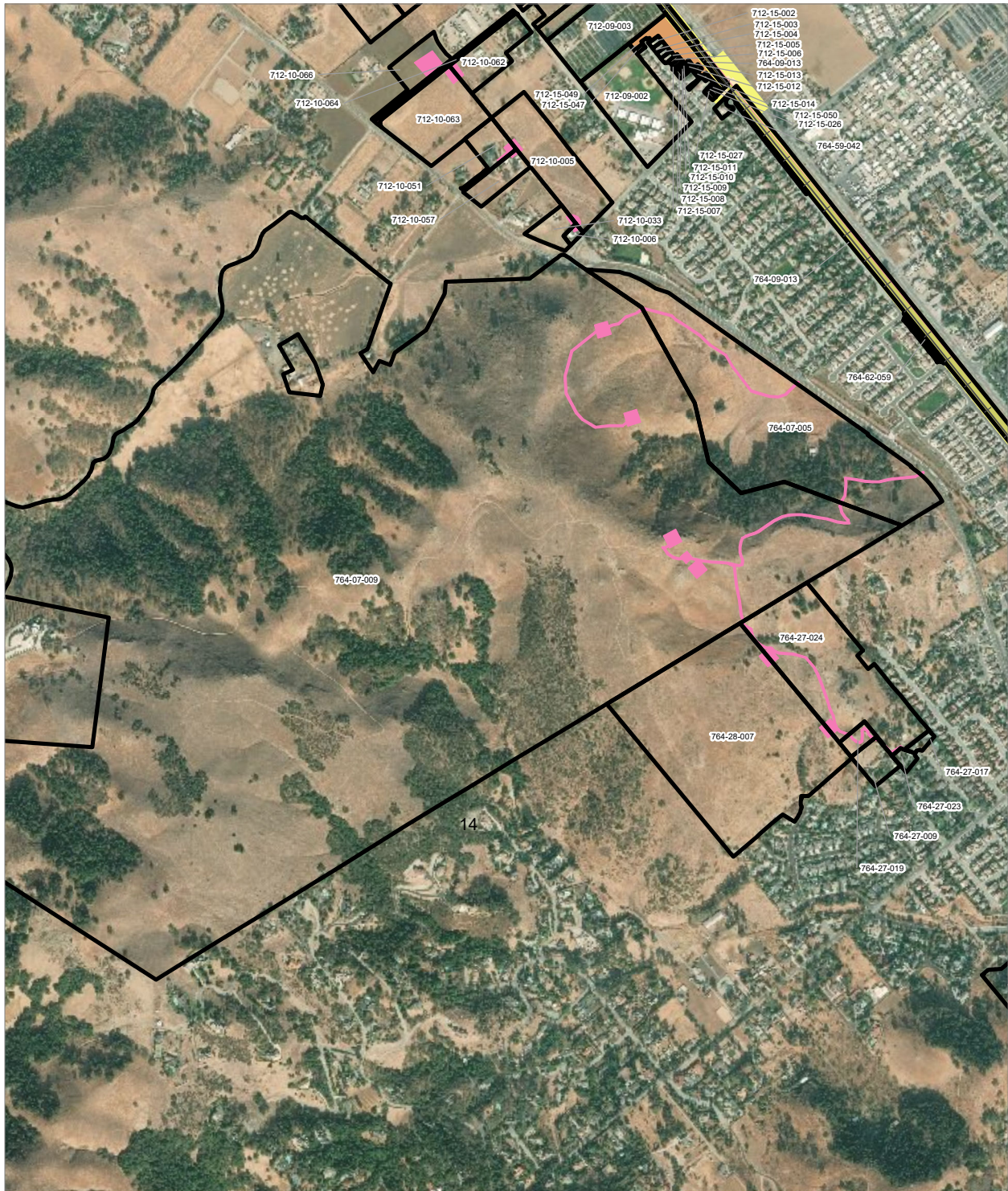
PRELIMINARY DRAFT/SUBJECT TO CHANGE - HSR ALIGNMENT IS NOT DETERMINED
 SOURCE: ESRI, 2019; Santa Clara County, 2016; San Mateo County, 2016, San Francisco County, 2016



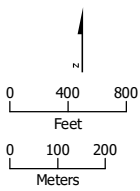
- HSR Right-of-Way
- Other Right-of-Way
- Roadway Right-of-Way
- Rail Right-of-Way
- HSR Permanent Easement
- Permanent Utility Easement
- Temporary Construction Easement
- Temporary Utility Easement
- Non-Viable Remnant Parcel
- Parcel (APN Displayed)


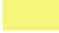






Alternative 4





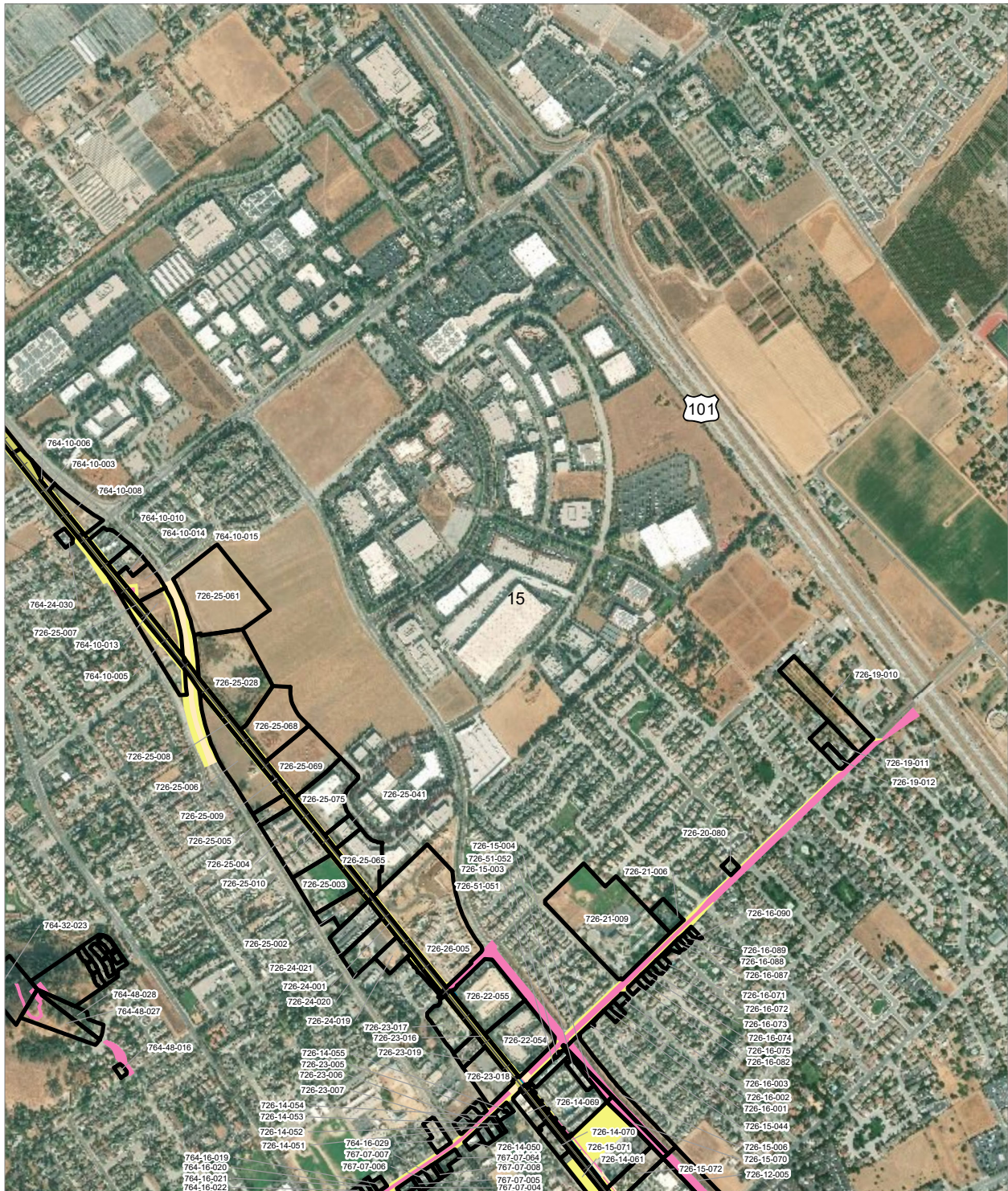
PRELIMINARY DRAFT/SUBJECT TO CHANGE - HSR ALIGNMENT IS NOT DETERMINED
 SOURCE: ESRI, 2019; Santa Clara County, 2016; San Mateo County, 2016, San Francisco County, 2016



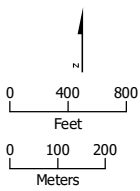
- | | |
|--|---|
|  HSR Right-of-Way |  Temporary Construction Easement |
|  Roadway Right-of-Way |  Temporary Utility Easement |
|  HSR Permanent Easement |  Non-Viable Remnant Parcel |
|  Permanent Utility Easement |  Parcel (APN Displayed) |

Alternative 4





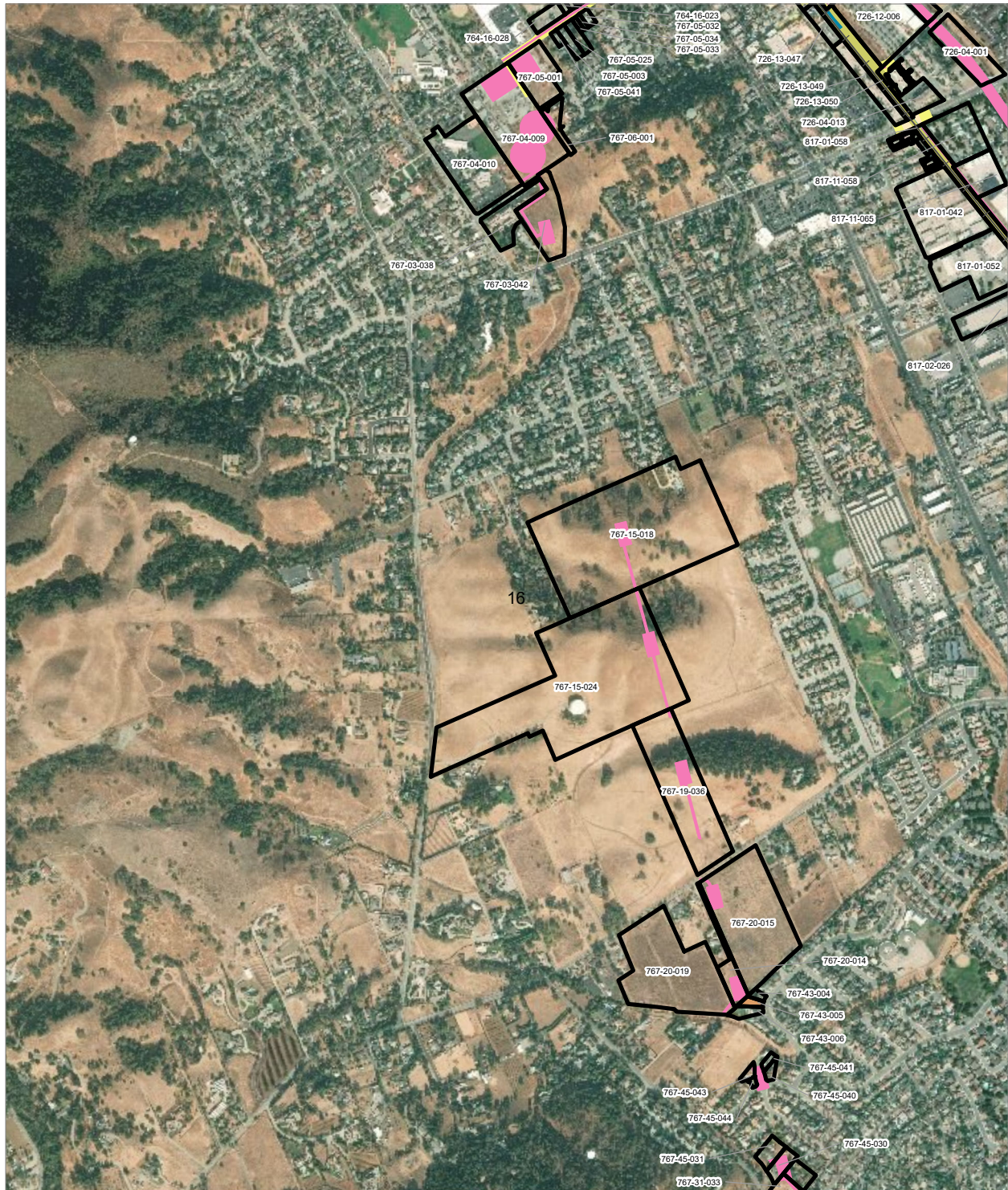
PRELIMINARY DRAFT/SUBJECT TO CHANGE - HSR ALIGNMENT IS NOT DETERMINED
 SOURCE: ESRI, 2019; Santa Clara County, 2016; San Mateo County, 2016, San Francisco County, 2016



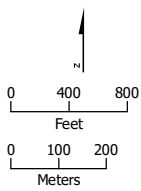
- HSR Right-of-Way
- Permanent Utility Easement
- Roadway Right-of-Way
- Temporary Construction Easement
- HSR Permanent Easement
- Temporary Utility Easement
- Parcel (APN Displayed)

Alternative 4





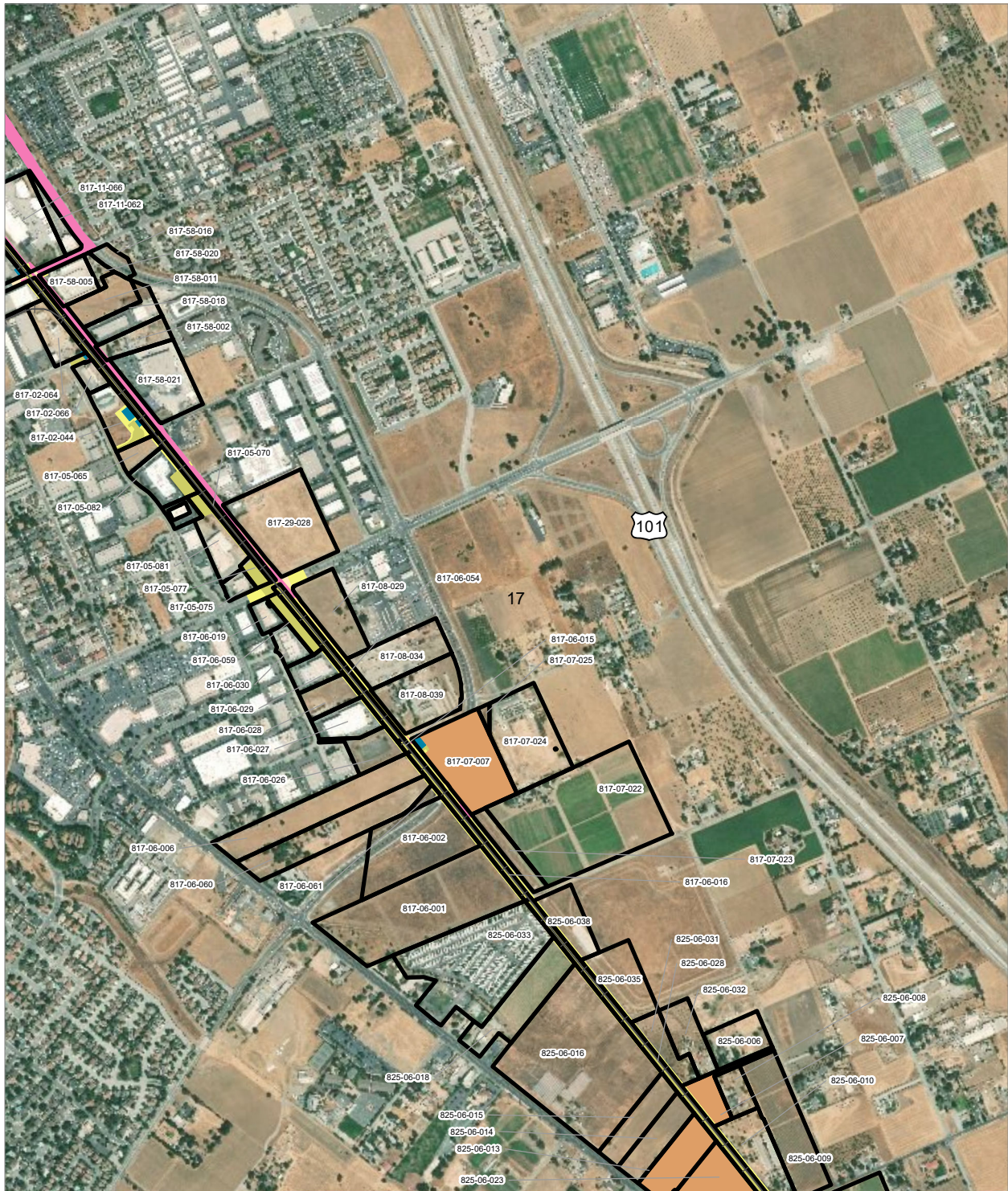
PRELIMINARY DRAFT/SUBJECT TO CHANGE - HSR ALIGNMENT IS NOT DETERMINED
 SOURCE: ESRI, 2019; Santa Clara County, 2016; San Mateo County, 2016, San Francisco County, 2016



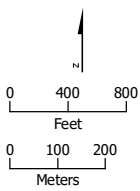
- HSR Right-of-Way
- Roadway Right-of-Way
- HSR Permanent Easement
- Permanent Utility Easement
- Temporary Construction Easement
- Temporary Utility Easement
- Non-Viable Remnant Parcel
- Parcel (APN Displayed)

Alternative 4





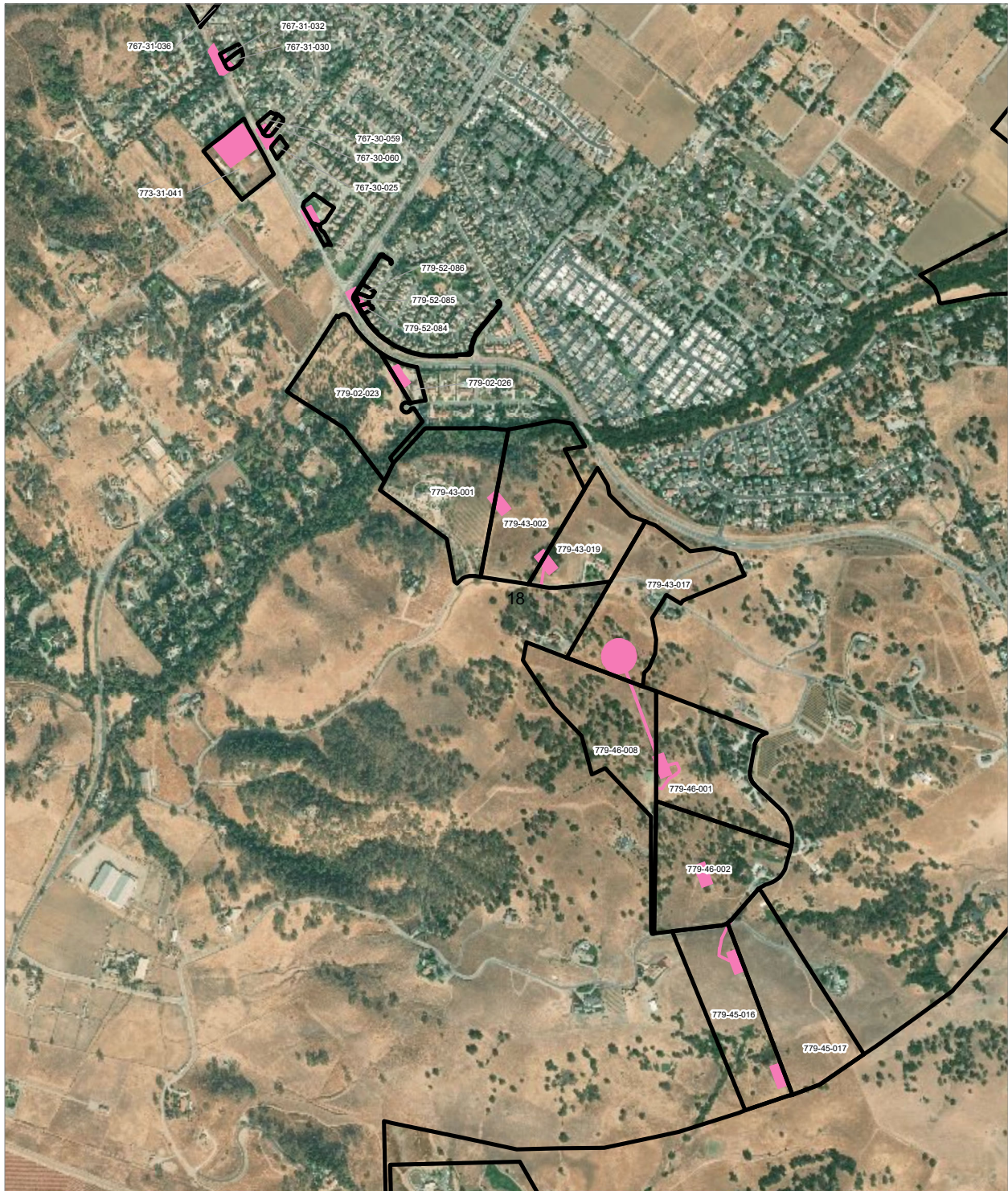
PRELIMINARY DRAFT/SUBJECT TO CHANGE - HSR ALIGNMENT IS NOT DETERMINED
 SOURCE: ESRI, 2019; Santa Clara County, 2016; San Mateo County, 2016, San Francisco County, 2016



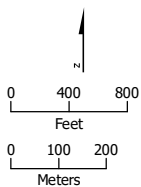
- HSR Right-of-Way
- Roadway Right-of-Way
- HSR Permanent Easement
- Permanent Utility Easement
- Temporary Construction Easement
- Non-Viable Remnant Parcel
- Parcel (APN Displayed)

Alternative 4





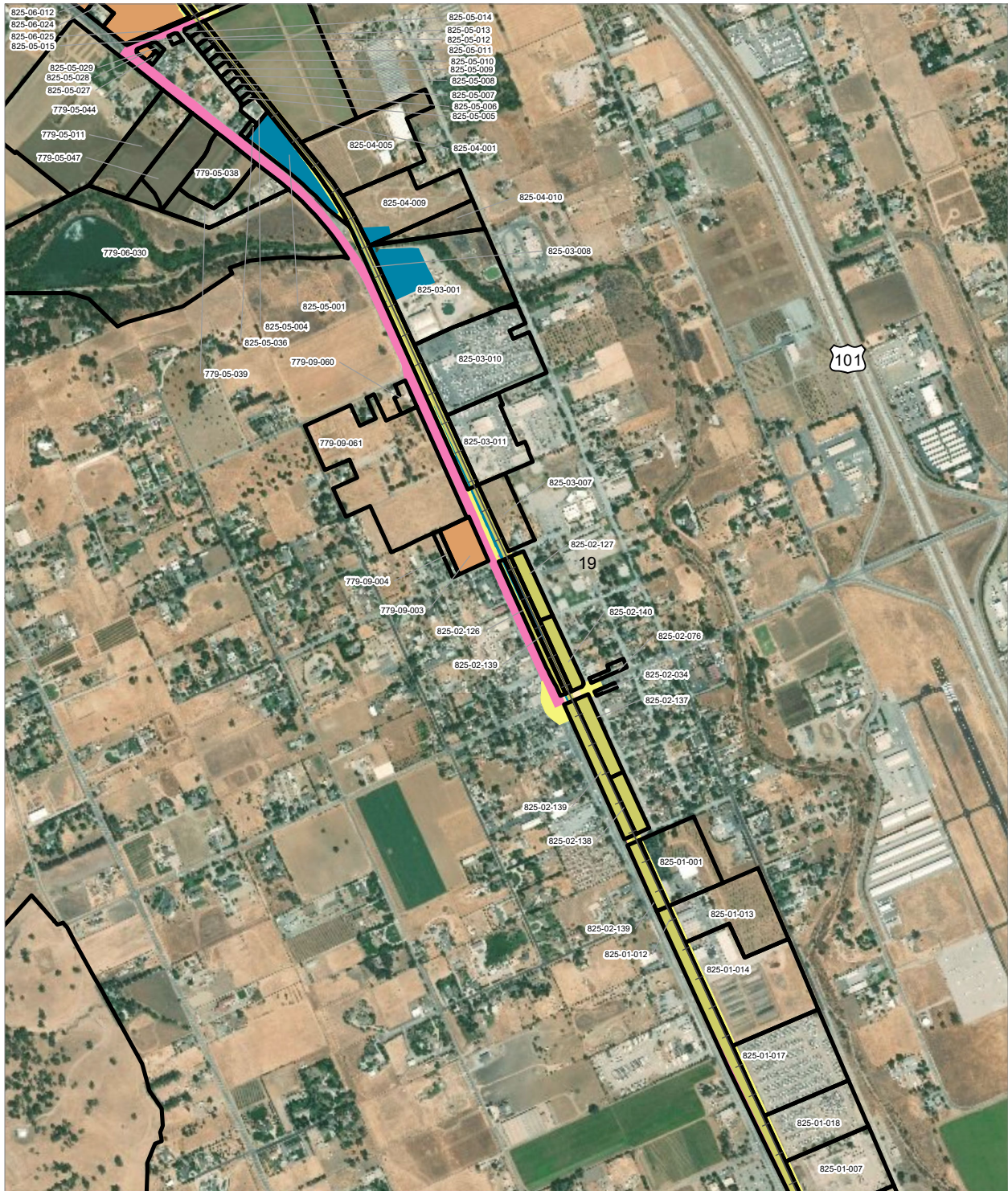
PRELIMINARY DRAFT/SUBJECT TO CHANGE - HSR ALIGNMENT IS NOT DETERMINED
 SOURCE: ESRI, 2019; Santa Clara County, 2016; San Mateo County, 2016; San Francisco County, 2016



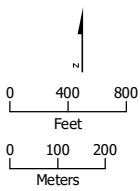
- Permanent Utility Easement
- Parcel (APN Displayed)

Alternative 4





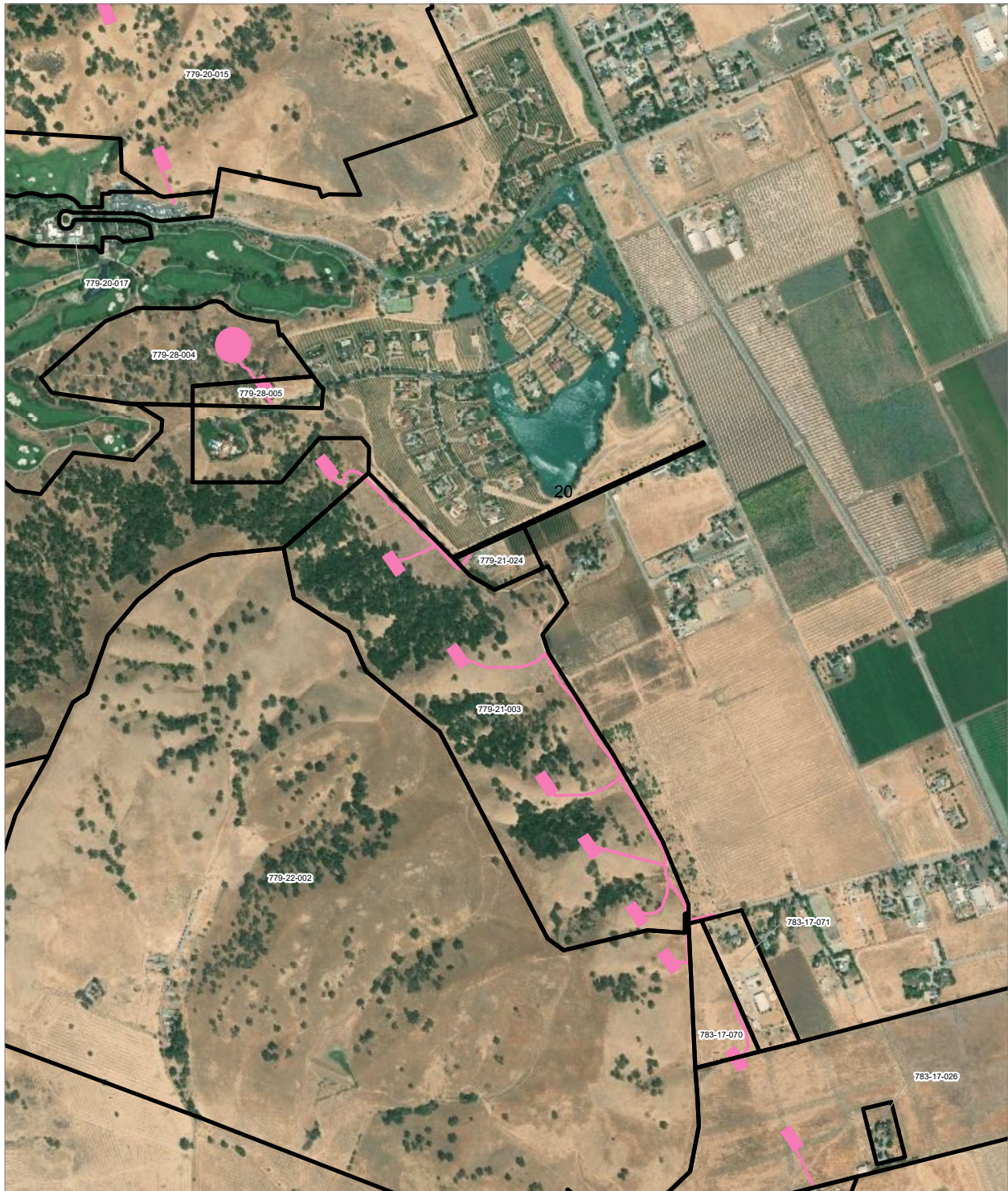
PRELIMINARY DRAFT/SUBJECT TO CHANGE - HSR ALIGNMENT IS NOT DETERMINED
 SOURCE: ESRI, 2019; Santa Clara County, 2016; San Mateo County, 2016, San Francisco County, 2016



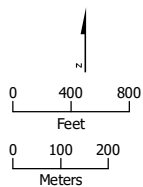
- HSR Right-of-Way
- Roadway Right-of-Way
- HSR Permanent Easement
- Permanent Utility Easement
- Temporary Construction Easement
- Non-Viable Remnant Parcel
- Parcel (APN Displayed)

Alternative 4





PRELIMINARY DRAFT/SUBJECT TO CHANGE - HSR ALIGNMENT IS NOT DETERMINED
 SOURCE: ESRI, 2019; Santa Clara County, 2016; San Mateo County, 2016, San Francisco County, 2016



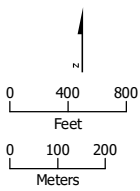
- Permanent Utility Easement
- Parcel (APN Displayed)

Alternative 4





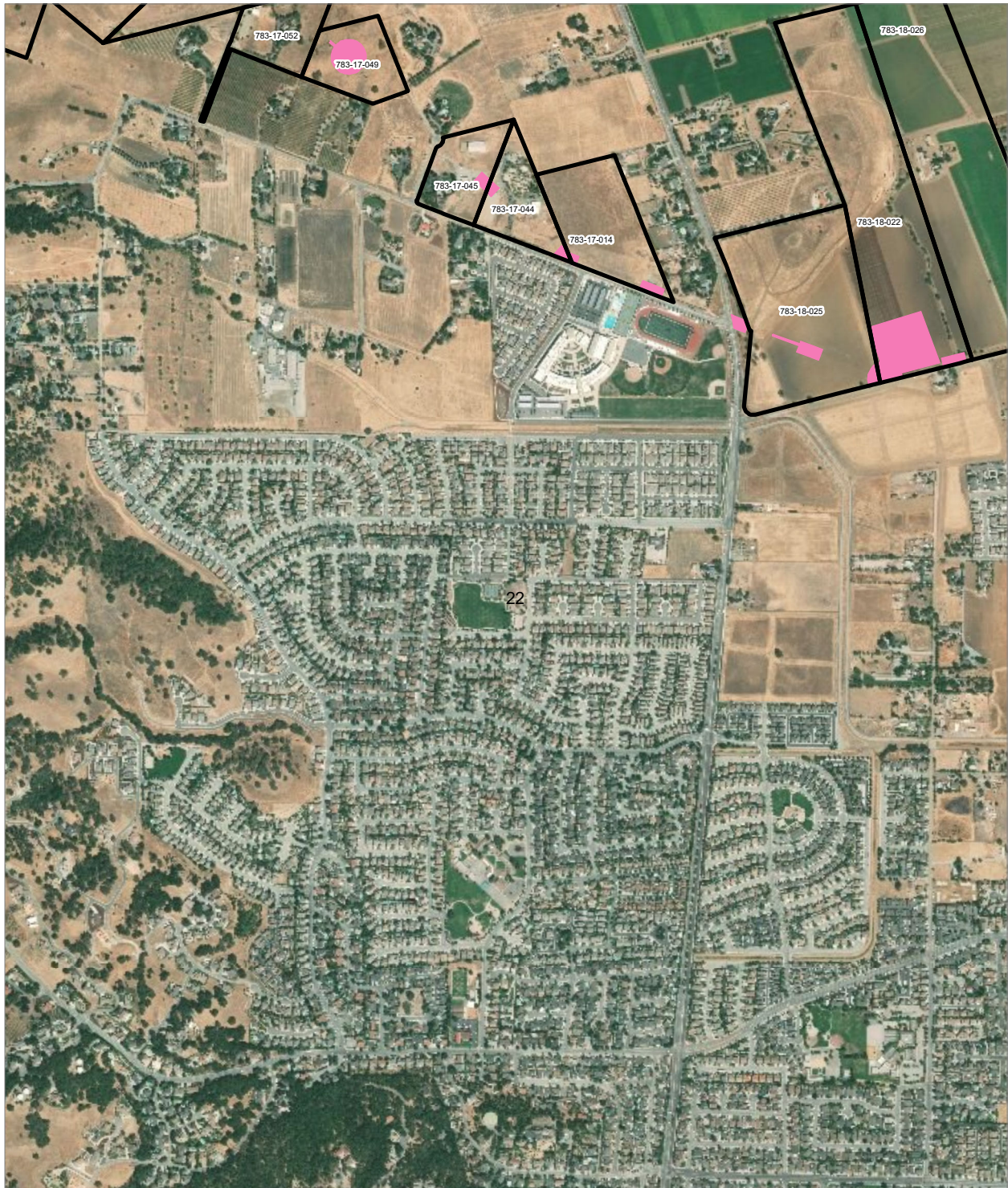
PRELIMINARY DRAFT/SUBJECT TO CHANGE - HSR ALIGNMENT IS NOT DETERMINED
 SOURCE: ESRI, 2019; Santa Clara County, 2016; San Mateo County, 2016, San Francisco County, 2016



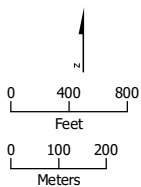
- HSR Right-of-Way
- Temporary Construction Easement
- Roadway Right-of-Way
- Temporary Utility Easement
- HSR Permanent Easement
- Non-Viable Remnant Parcel
- Permanent Utility Easement
- Parcel (APN Displayed)

Alternative 4





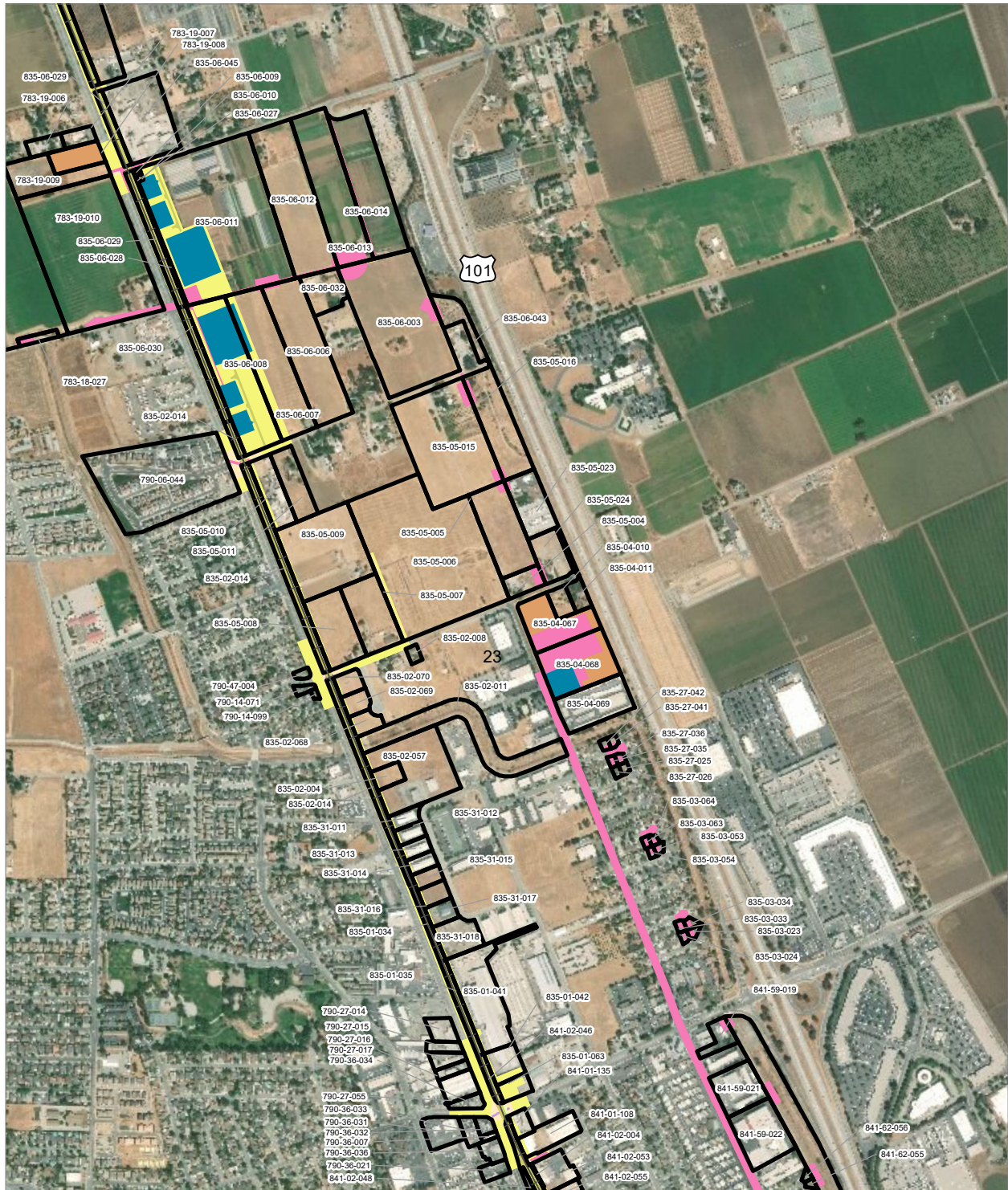
PRELIMINARY DRAFT/SUBJECT TO CHANGE - HSR ALIGNMENT IS NOT DETERMINED
 SOURCE: ESRI, 2019; Santa Clara County, 2016; San Mateo County, 2016; San Francisco County, 2016



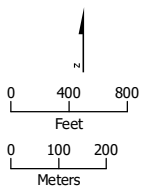
- Permanent Utility Easement
- Parcel (APN Displayed)



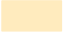

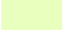




Alternative 4





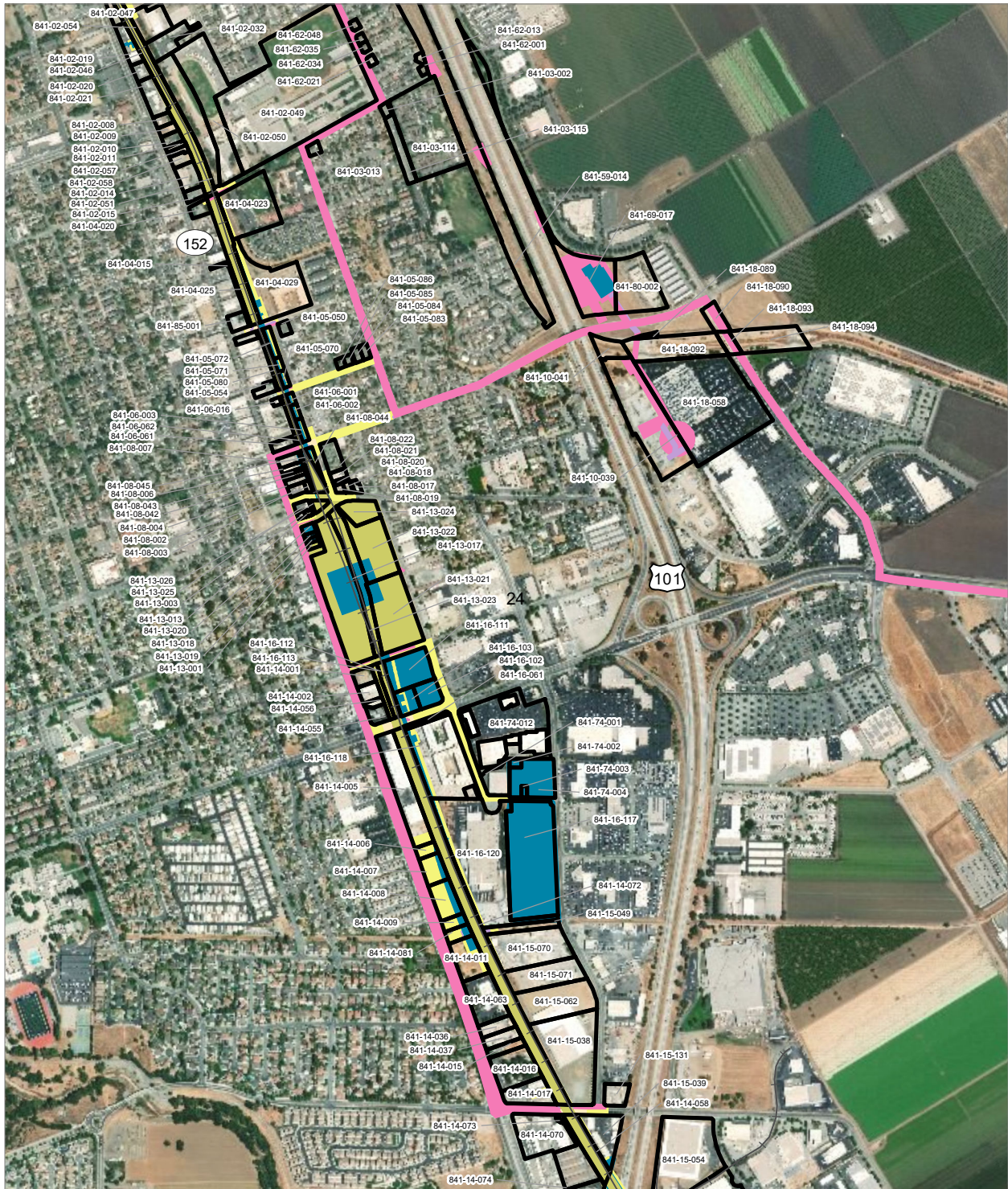
PRELIMINARY DRAFT/SUBJECT TO CHANGE - HSR ALIGNMENT IS NOT DETERMINED
 SOURCE: ESRI, 2019; Santa Clara County, 2016; San Mateo County, 2016, San Francisco County, 2016



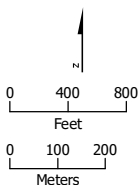
- | | |
|--|---|
|  HSR Right-of-Way |  Permanent Utility Easement |
|  Roadway Right-of-Way |  Temporary Construction Easement |
|  Rail Right-of-Way |  Temporary Utility Easement |
|  HSR Permanent Easement |  Non-Viable Remnant Parcel |
|  Parcel (APN Displayed) | |

Alternative 4





PRELIMINARY DRAFT/SUBJECT TO CHANGE - HSR ALIGNMENT IS NOT DETERMINED
 SOURCE: ESRI, 2019; Santa Clara County, 2016; San Mateo County, 2016, San Francisco County, 2016



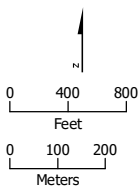
- HSR Right-of-Way
- Roadway Right-of-Way
- HSR Permanent Easement
- Permanent Utility Easement
- Temporary Construction Easement
- Temporary Utility Easement
- Parcel (APN Displayed)

Alternative 4





PRELIMINARY DRAFT/SUBJECT TO CHANGE - HSR ALIGNMENT IS NOT DETERMINED
 SOURCE: ESRI, 2019; Santa Clara County, 2016; San Mateo County, 2016, San Francisco County, 2016



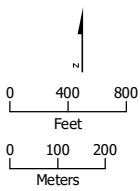
- HSR Right-of-Way
- Roadway Right-of-Way
- Rail Right-of-Way
- HSR Permanent Easement
- Permanent Utility Easement
- Temporary Construction Easement
- Non-Viable Remnant Parcel
- Parcel (APN Displayed)

Alternative 4





PRELIMINARY DRAFT/SUBJECT TO CHANGE. HSR ALIGNMENT IS NOT DETERMINED
 SOURCE: ESRI, 2019; Santa Clara County, 2016; San Mateo County, 2016, San Francisco County, 2016



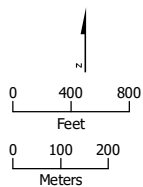
- HSR Right-of-Way
- Roadway Right-of-Way
- HSR Permanent Easement
- Permanent Utility Easement
- Temporary Construction Easement
- Non-Viable Remnant Parcel
- Parcel (APN Displayed)

Alternative 4





PRELIMINARY DRAFT/SUBJECT TO CHANGE - HSR ALIGNMENT IS NOT DETERMINED
 SOURCE: ESRI, 2019; Santa Clara County, 2016; San Mateo County, 2016, San Francisco County, 2016



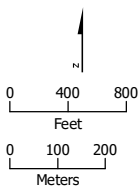
- HSR Right-of-Way
- HSR Permanent Easement
- Permanent Utility Easement
- Temporary Construction Easement
- Temporary Utility Easement
- Non-Viable Remnant Parcel
- Parcel (APN Displayed)

Alternative 4





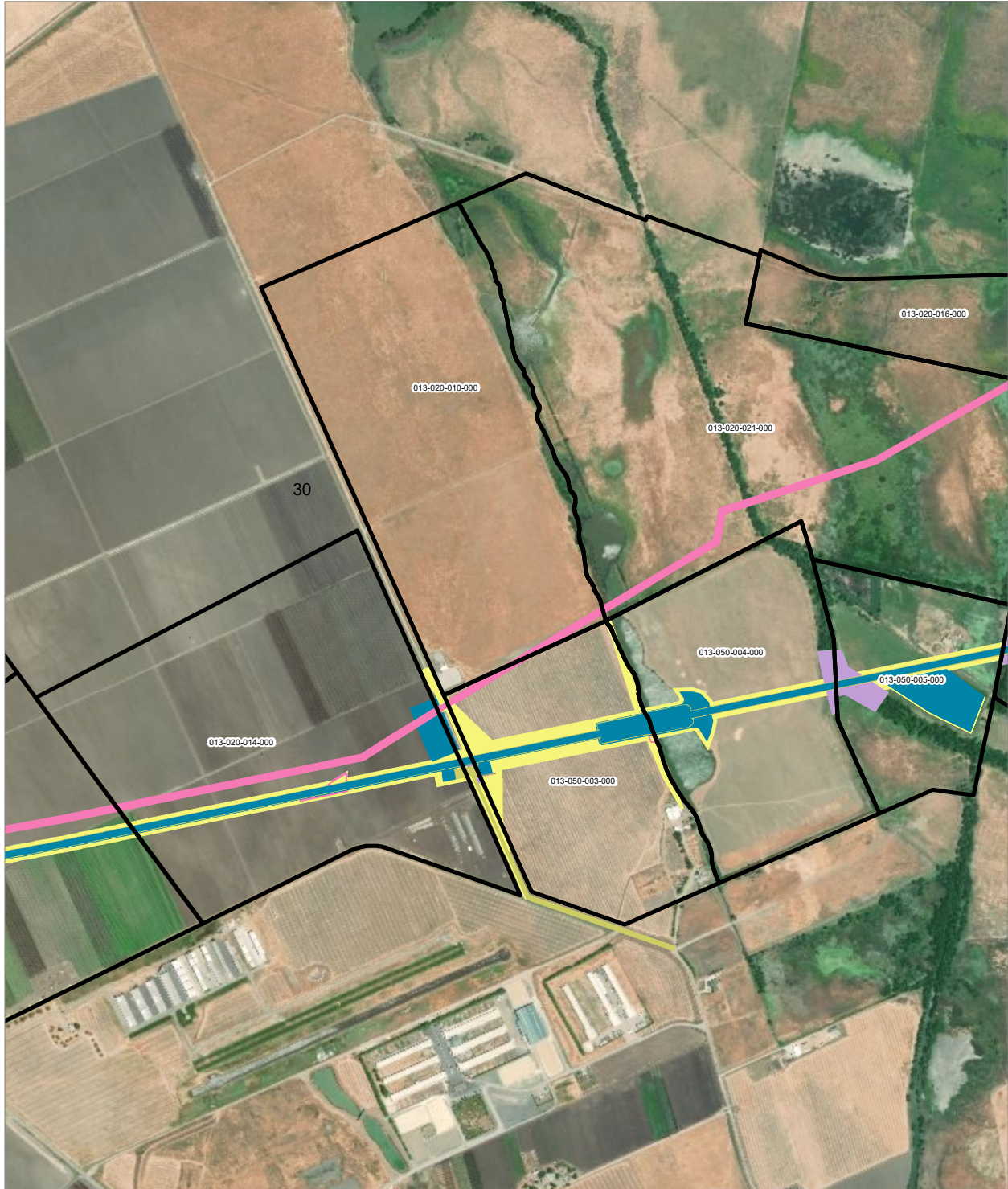
PRELIMINARY DRAFT/SUBJECT TO CHANGE - HSR ALIGNMENT IS NOT DETERMINED
 SOURCE: ESRI, 2019; Santa Clara County, 2016; San Mateo County, 2016, San Francisco County, 2016



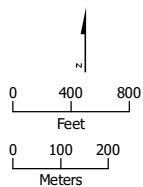
- HSR Right-of-Way
- Temporary Construction Easement
- HSR Permanent Easement
- Temporary Utility Easement
- Permanent Utility Easement
- Non-Viable Remnant Parcel
- Parcel (APN Displayed)

Alternative 4





PRELIMINARY DRAFT/SUBJECT TO CHANGE - HSR ALIGNMENT IS NOT DETERMINED
 SOURCE: ESRI, 2019; Santa Clara County, 2016; San Mateo County, 2016, San Francisco County, 2016



- HSR Right-of-Way
- Temporary Construction Easement
- HSR Permanent Easement
- Temporary Utility Easement
- Permanent Utility Easement
- Non-Viable Remnant Parcel
- Parcel (APN Displayed)

Alternative 4

