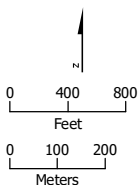


APPENDIX 3.1-A: PARCELS WITHIN THE HSR PROJECT FOOTPRINT (Alternative 1, Part 1)



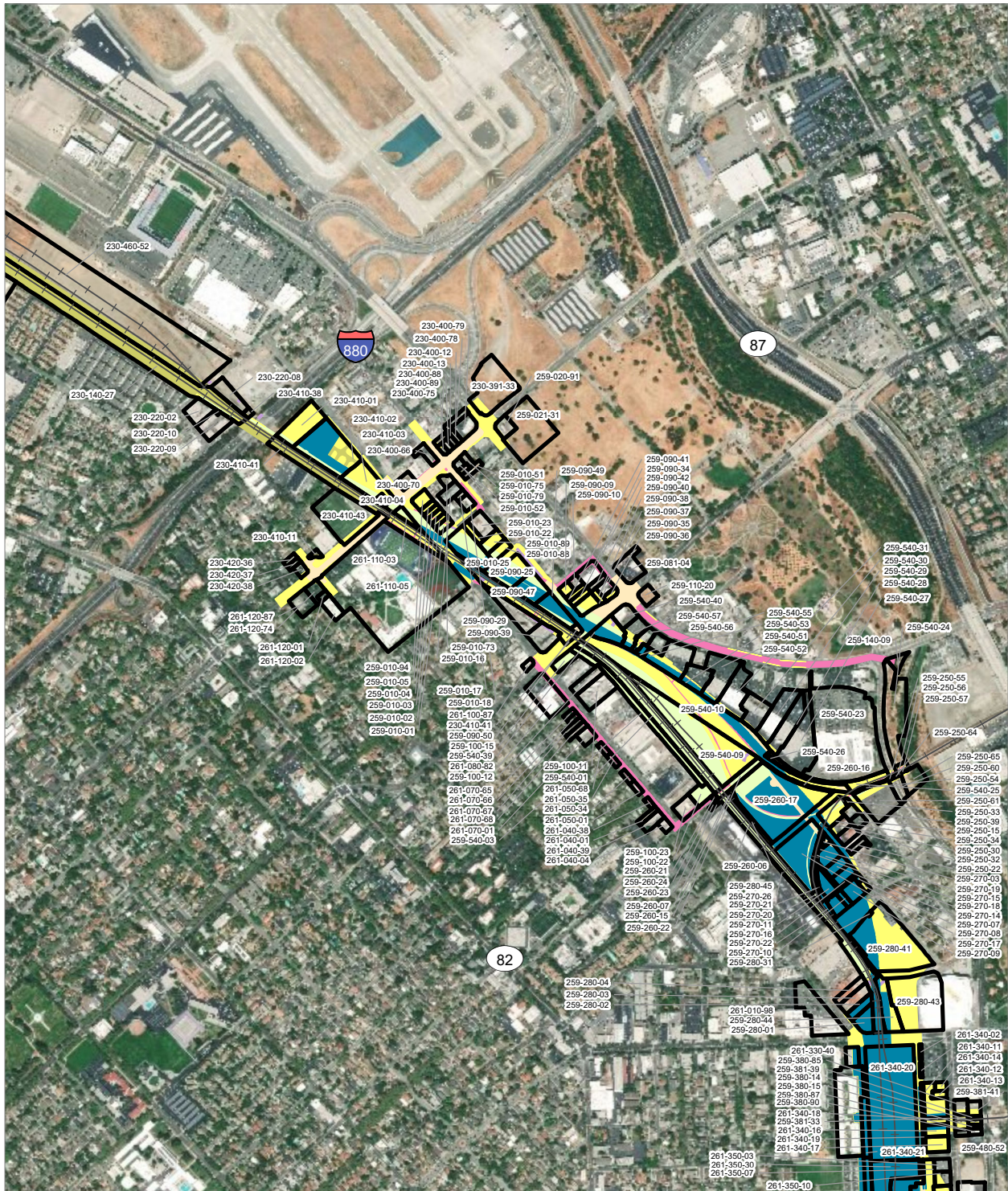
PRELIMINARY DRAFT/SUBJECT TO CHANGE - HSR ALIGNMENT IS NOT DETERMINED
 SOURCE: ESRI, 2019; San Jose County, 2016; San Benito County, 2016; Merced Counties, 2016.



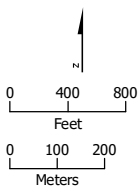
- HSR Right-of-Way
- Rail Right-of-Way
- HSR Permanent Easement
- Temporary Construction Easement
- Temporary Utility Easement
- Parcel (APN Displayed)

Alternative 1





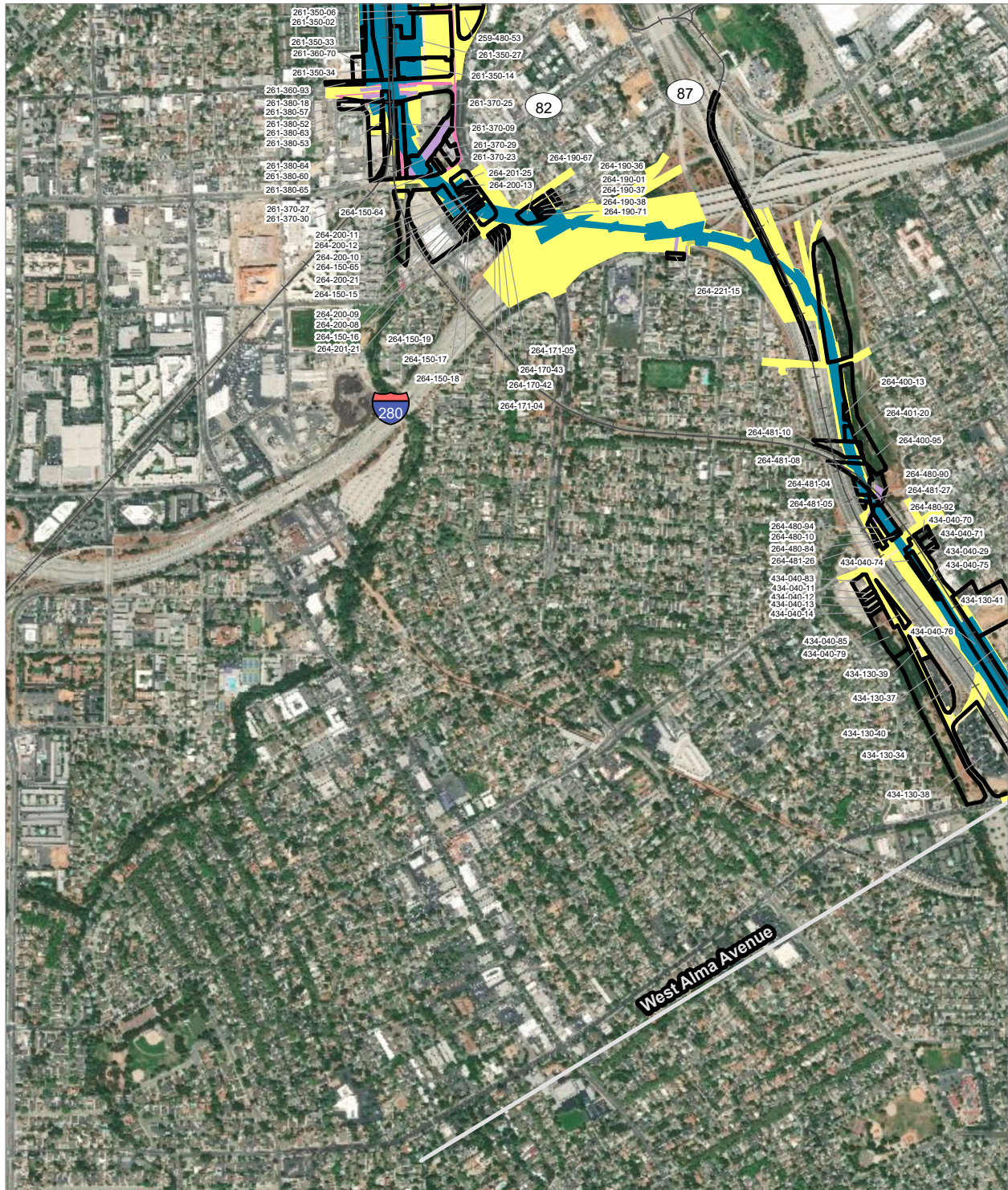
PRELIMINARY DRAFT/SUBJECT TO CHANGE - HSR ALIGNMENT IS NOT DETERMINED
 SOURCE: ESRI, 2019; San Jose County, 2016; San Benito County, 2016; Merced Counties, 2016.



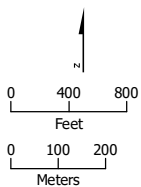
- HSR Right-of-Way
- Roadway Right-of-Way
- Rail Right-of-Way
- HSR Permanent Easement
- Permanent Utility Easement
- Temporary Construction Easement
- Temporary Utility Easement
- Parcel (APN Displayed)



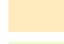





Alternative 1





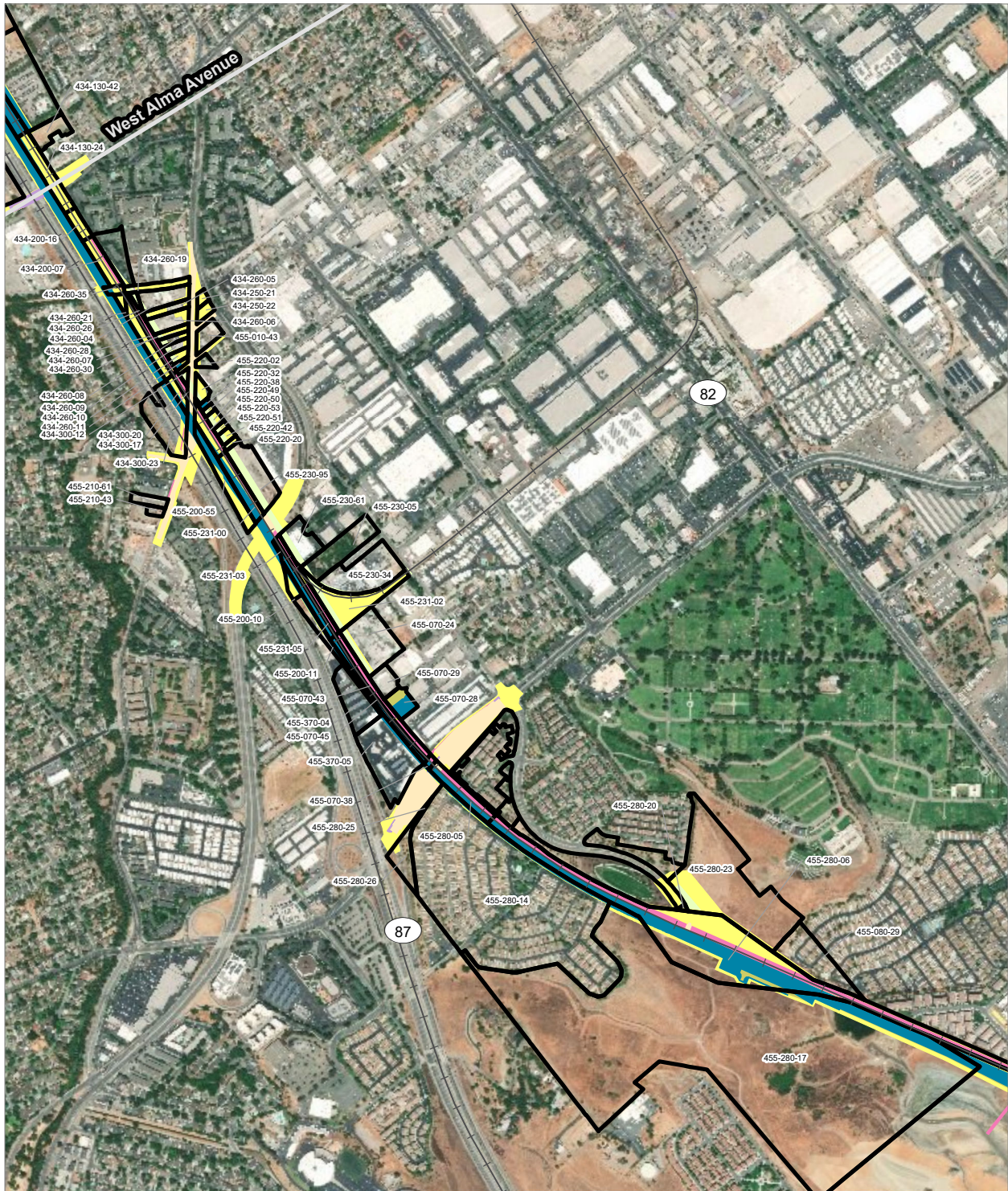
PRELIMINARY DRAFT/SUBJECT TO CHANGE - HSR ALIGNMENT IS NOT DETERMINED
 SOURCE: ESRI, 2019; San Jose County, 2016; San Benito County, 2016; Merced Counties, 2016.



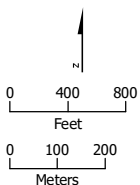
- | | |
|--|---|
|  HSR Right-of-Way |  Permanent Utility Easement |
|  Roadway Right-of-Way |  Temporary Construction Easement |
|  Rail Right-of-Way |  Temporary Utility Easement |
|  HSR Permanent Easement |  Parcel (APN Displayed) |


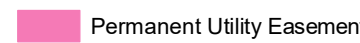
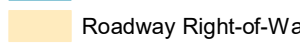


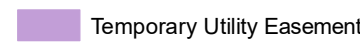
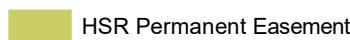
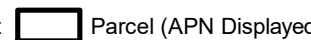
Alternative 1





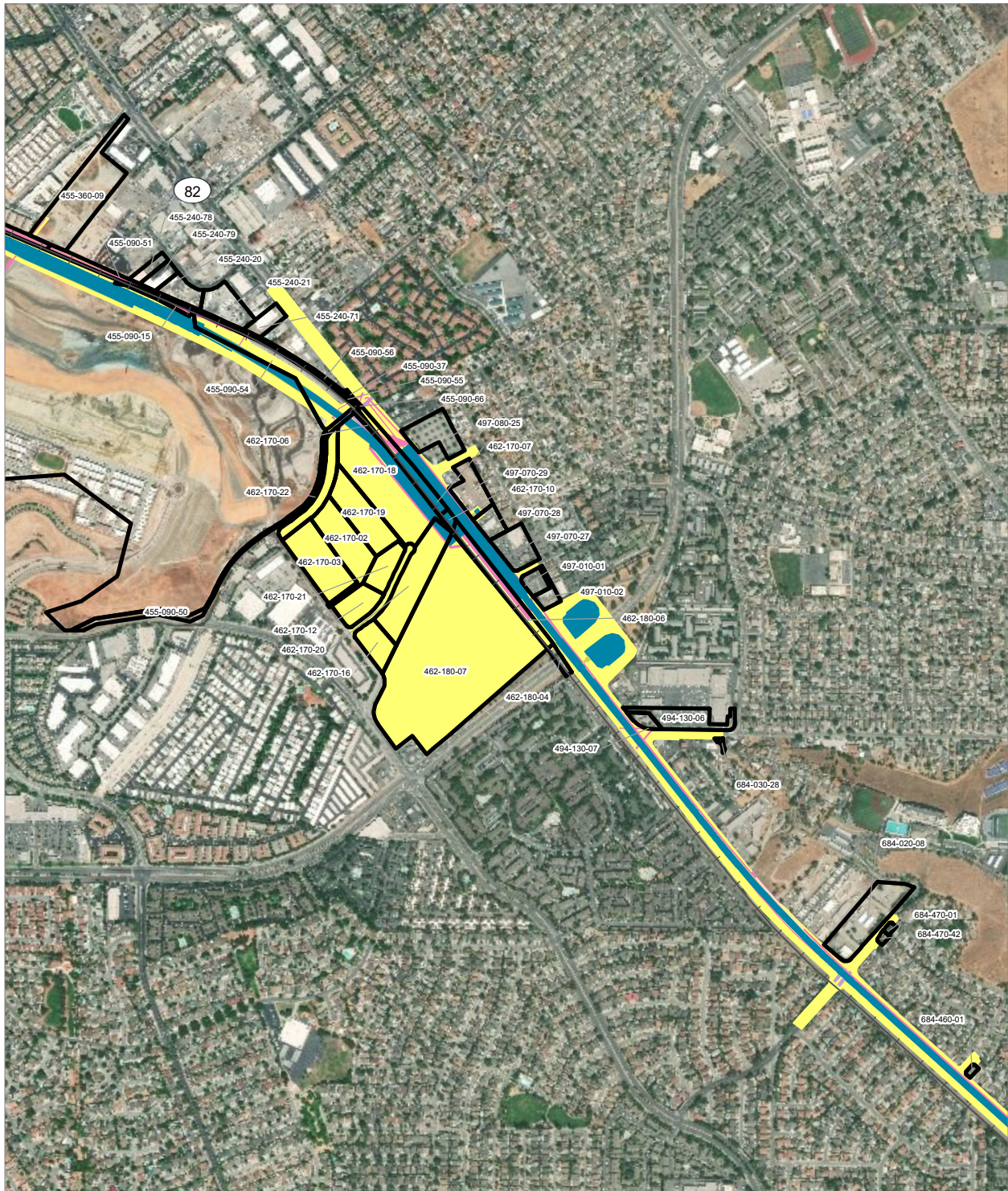
PRELIMINARY DRAFT/SUBJECT TO CHANGE - HSR ALIGNMENT IS NOT DETERMINED
 SOURCE: ESRI, 2019; San Jose County, 2016; San Benito County, 2016; Merced Counties, 2016.



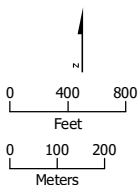
- | | |
|--|--|
|  HSR Right-of-Way |  Permanent Utility Easement |
|  Roadway Right-of-Way |  Temporary Construction Easement |
|  Rail Right-of-Way |  Temporary Utility Easement |
|  HSR Permanent Easement |  Parcel (APN Displayed) |



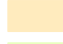





Alternative 1





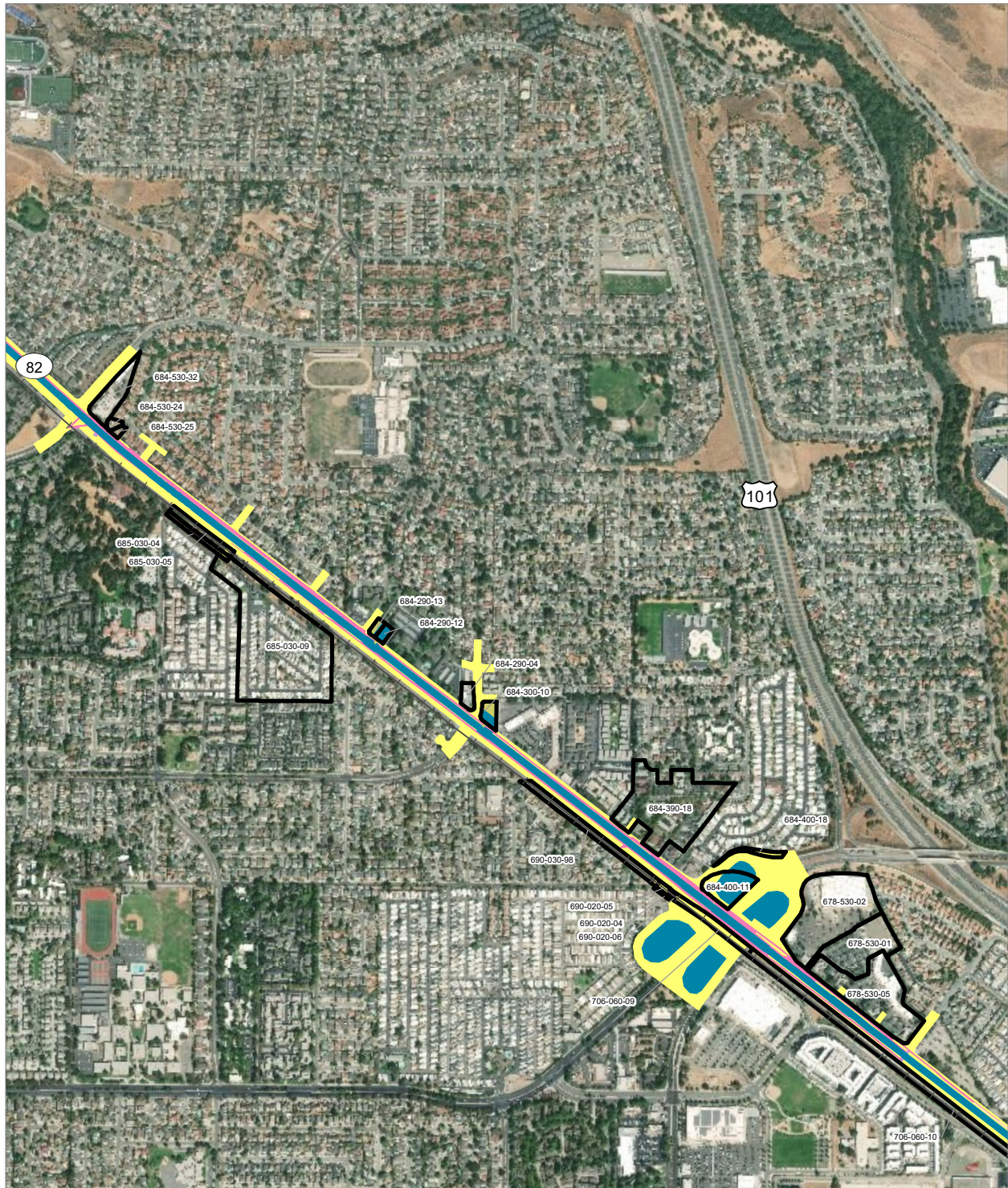
PRELIMINARY DRAFT/SUBJECT TO CHANGE - HSR ALIGNMENT IS NOT DETERMINED
 SOURCE: ESRI, 2019; San Jose County, 2016; San Benito County, 2016; Merced Counties, 2016.



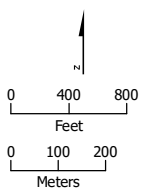
- | | |
|--|---|
|  HSR Right-of-Way |  Permanent Utility Easement |
|  Roadway Right-of-Way |  Temporary Construction Easement |
|  Rail Right-of-Way |  Temporary Utility Easement |
|  HSR Permanent Easement |  Parcel (APN Displayed) |




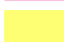


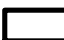
Alternative 1





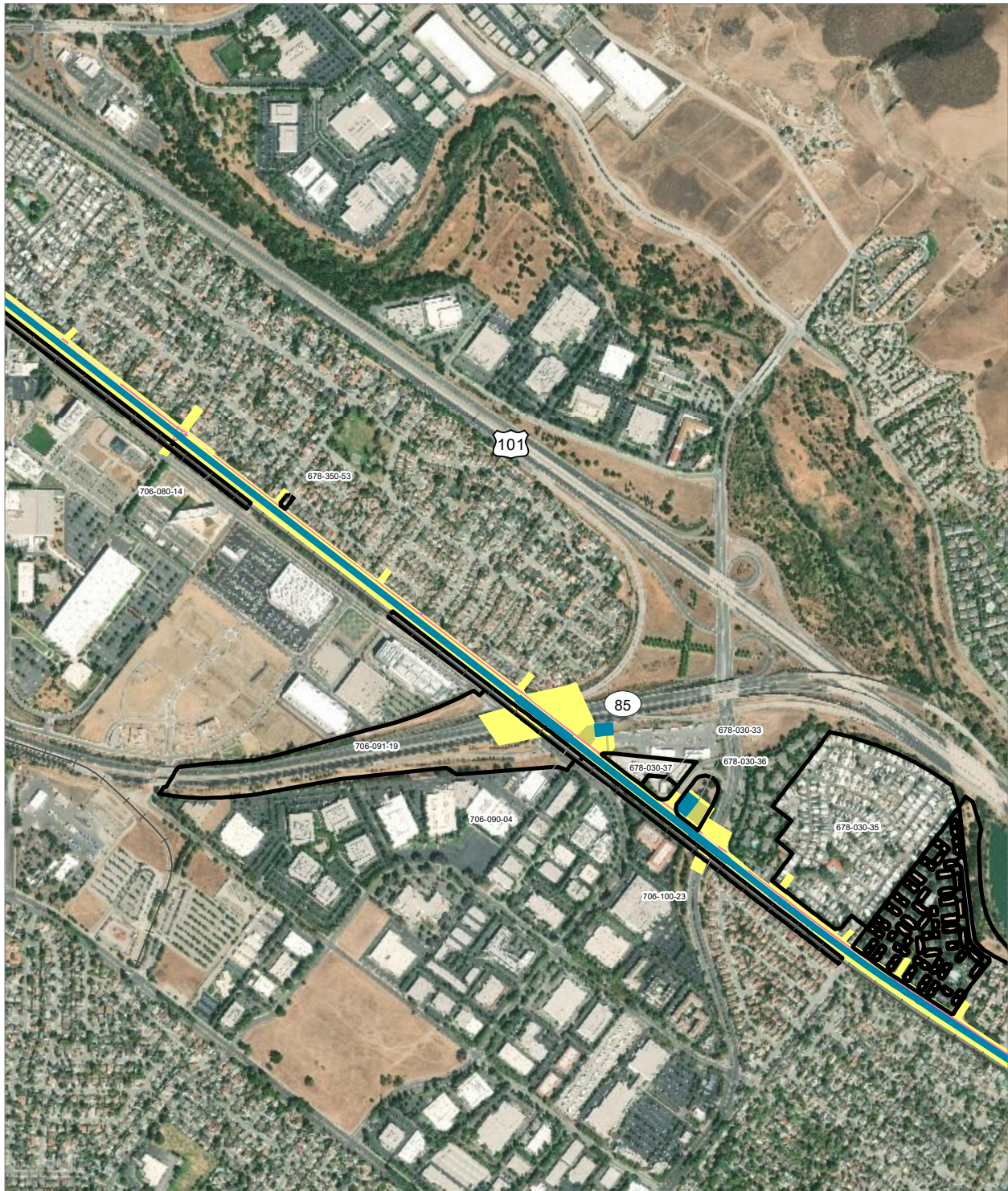
PRELIMINARY DRAFT/SUBJECT TO CHANGE - HSR ALIGNMENT IS NOT DETERMINED
 SOURCE: ESRI, 2019; San Jose County, 2016; San Benito County, 2016; Merced Counties, 2016.



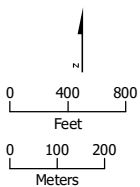
- | | |
|--|---|
|  HSR Right-of-Way |  Permanent Utility Easement |
|  Roadway Right-of-Way |  Temporary Construction Easement |
|  HSR Permanent Easement |  Temporary Utility Easement |
|  Parcel (APN Displayed) | |

Alternative 1





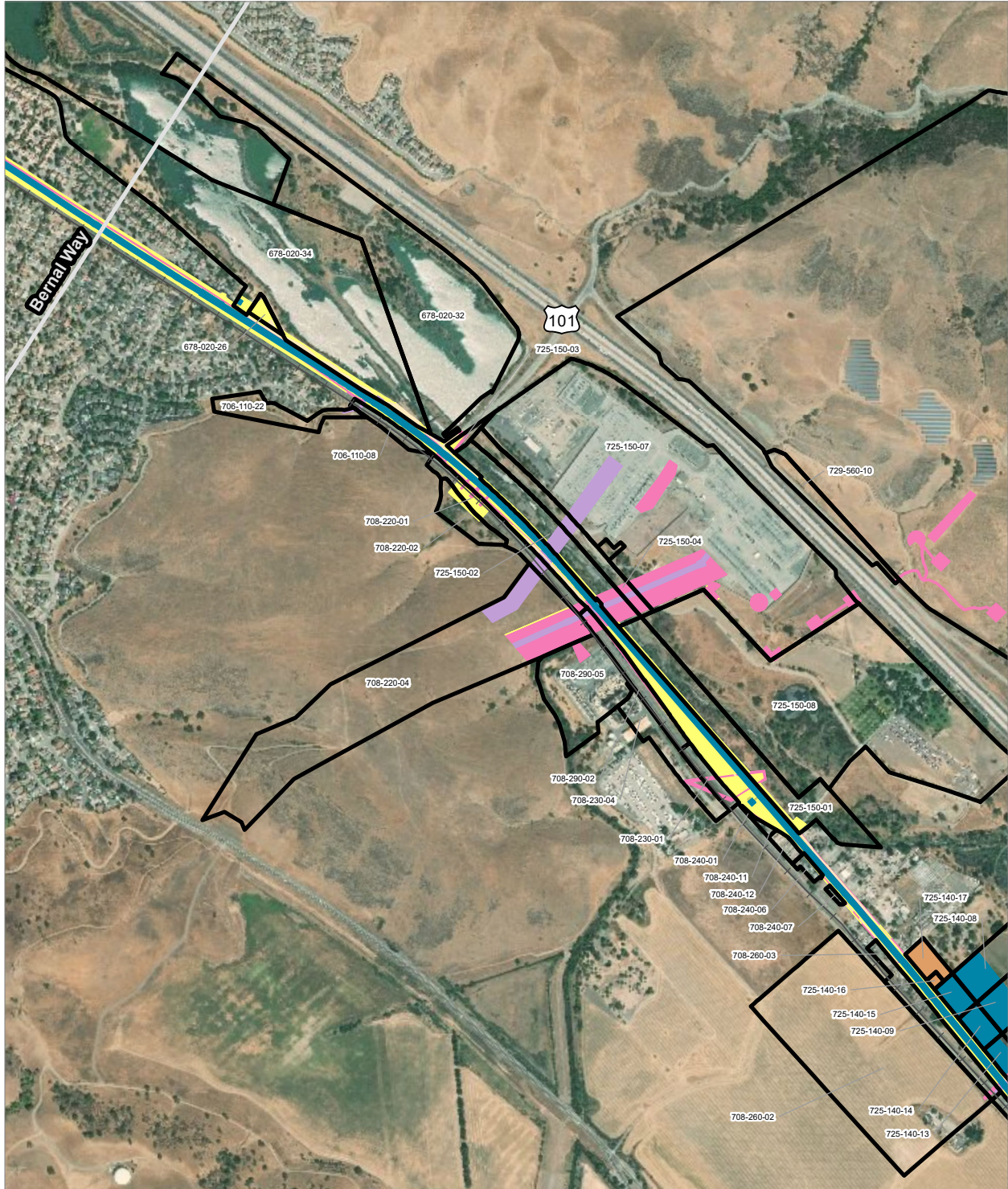
PRELIMINARY DRAFT/SUBJECT TO CHANGE - HSR ALIGNMENT IS NOT DETERMINED
 SOURCE: ESRI, 2019; San Jose County, 2016; San Benito County, 2016; Merced Counties, 2016.



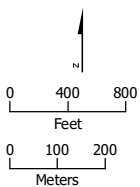
- HSR Right-of-Way
- Roadway Right-of-Way
- HSR Permanent Easement
- Permanent Utility Easement
- Temporary Construction Easement
- Parcel (APN Displayed)


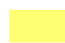






Alternative 1





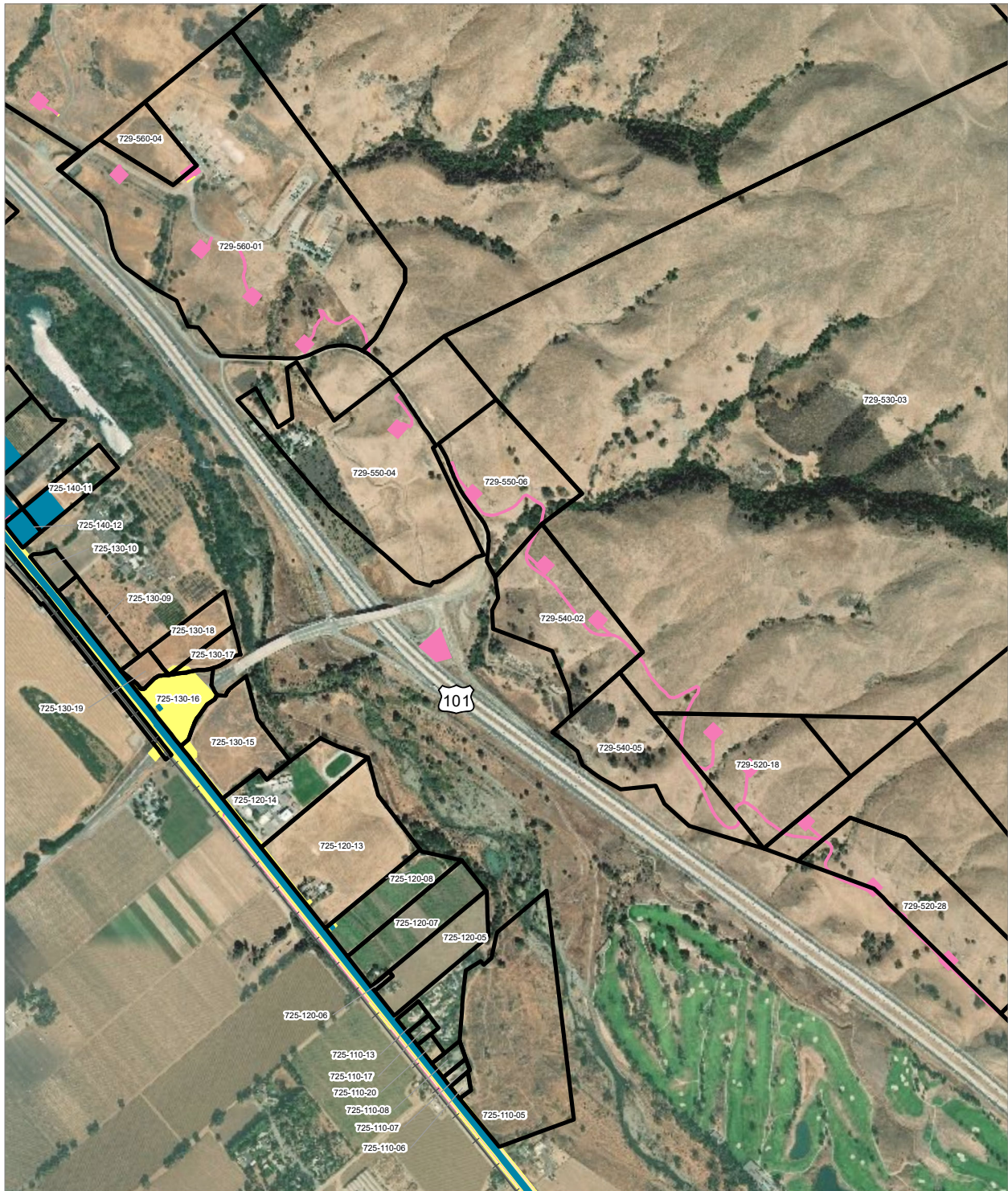
PRELIMINARY DRAFT/SUBJECT TO CHANGE - HSR ALIGNMENT IS NOT DETERMINED
 SOURCE: ESRI, 2019; San Jose County, 2016; San Benito County, 2016; Merced Counties, 2016.



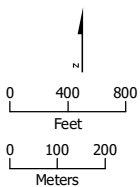
- | | |
|--|---|
|  HSR Right-of-Way |  Temporary Construction Easement |
|  Roadway Right-of-Way |  Temporary Utility Easement |
|  HSR Permanent Easement |  Non-Viable Remnant Parcel |
|  Permanent Utility Easement |  Parcel (APN Displayed) |








Alternative 1





PRELIMINARY DRAFT/SUBJECT TO CHANGE - HSR ALIGNMENT IS NOT DETERMINED
 SOURCE: ESRI, 2019; San Jose County, 2016; San Benito County, 2016; Merced Counties, 2016.



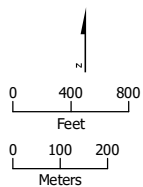
- | | |
|--|---|
|  HSR Right-of-Way |  Permanent Utility Easement |
|  Roadway Right-of-Way |  Temporary Construction Easement |
|  HSR Permanent Easement |  Temporary Utility Easement |
|  Parcel (APN Displayed) | |

Alternative 1





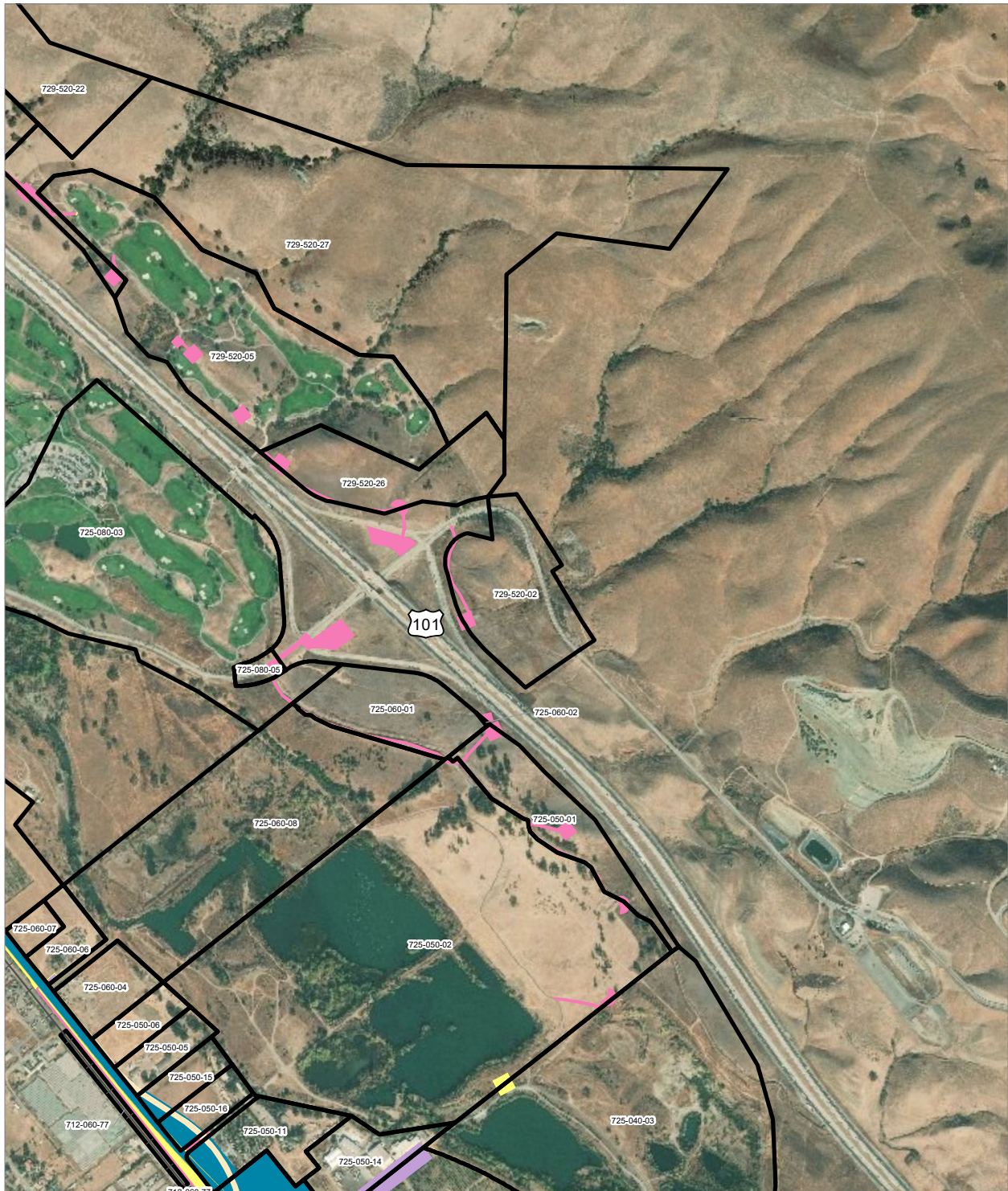
PRELIMINARY DRAFT/SUBJECT TO CHANGE - HSR ALIGNMENT IS NOT DETERMINED
 SOURCE: ESRI, 2019; San Jose County, 2016; San Benito County, 2016; Merced Counties, 2016.



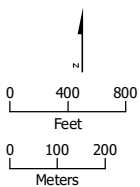
- HSR Right-of-Way
- Roadway Right-of-Way
- HSR Permanent Easement
- Permanent Utility Easement
- Temporary Construction Easement
- Parcel (APN Displayed)

Alternative 1





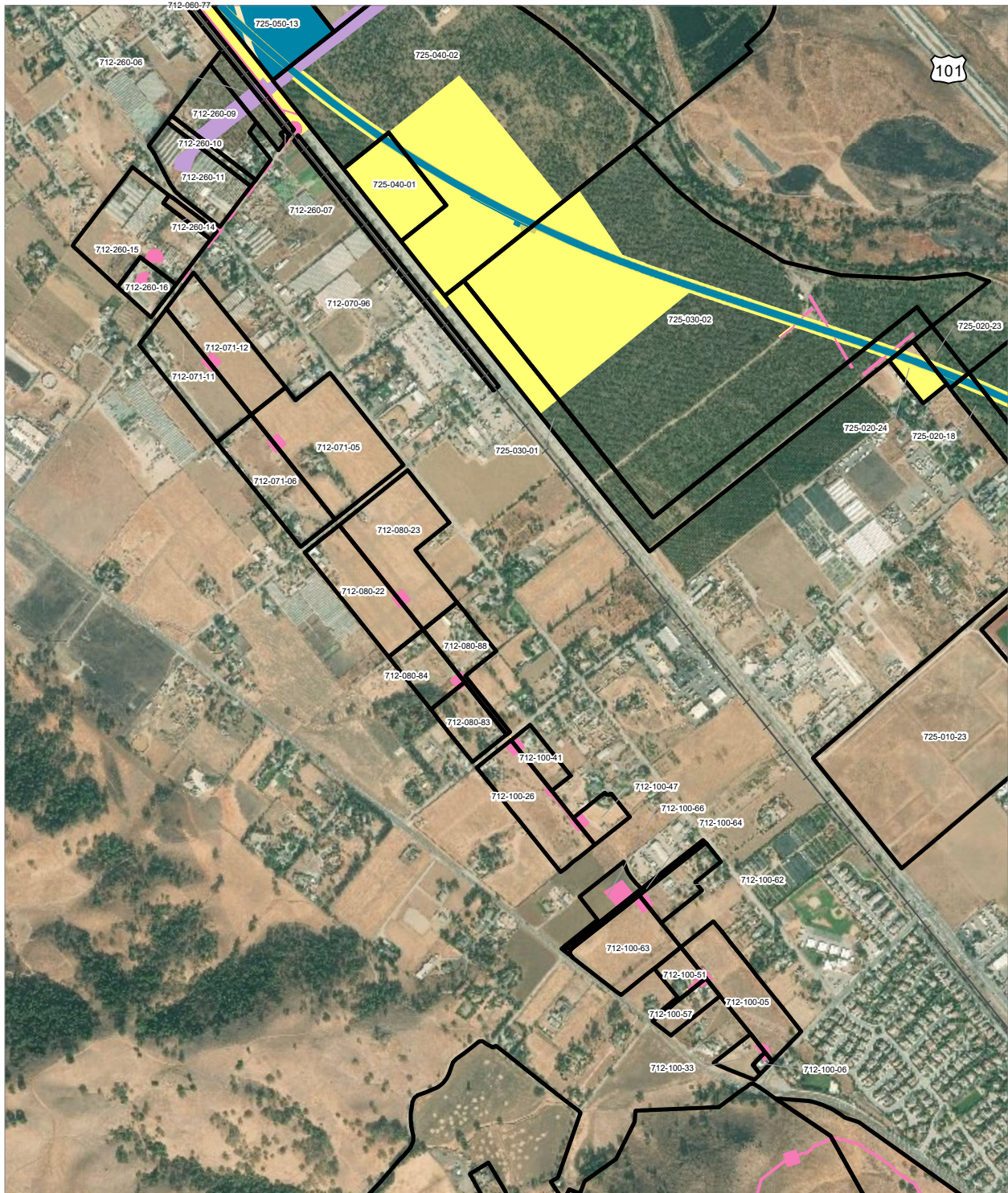
PRELIMINARY DRAFT/SUBJECT TO CHANGE - HSR ALIGNMENT IS NOT DETERMINED
 SOURCE: ESRI, 2019; San Jose County, 2016; San Benito County, 2016; Merced Counties, 2016.



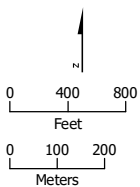
- HSR Right-of-Way
- Temporary Construction Easement
- Roadway Right-of-Way
- Temporary Utility Easement
- HSR Permanent Easement
- Non-Viable Remnant Parcel
- Permanent Utility Easement
- Parcel (APN Displayed)


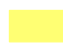






Alternative 1





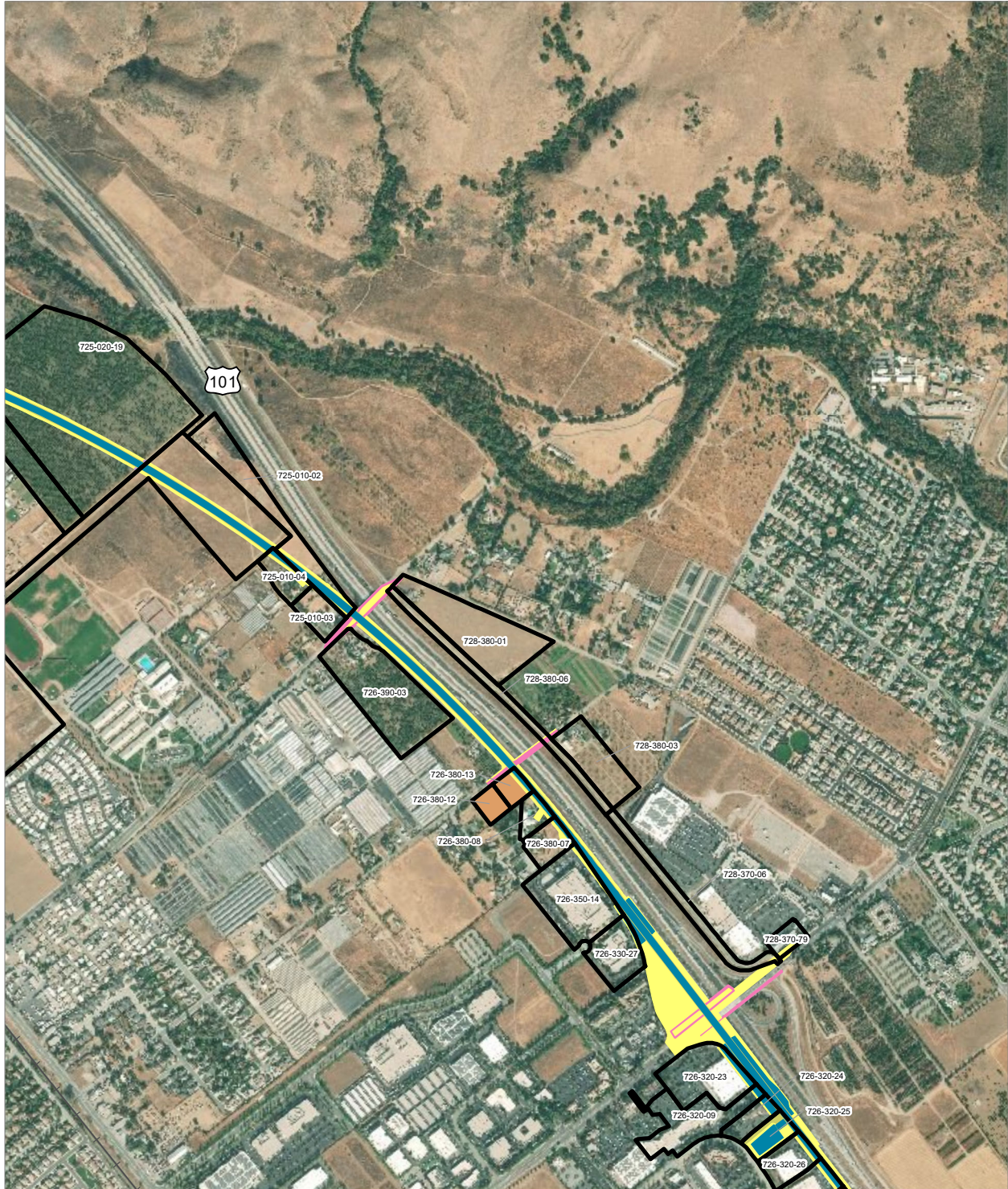
PRELIMINARY DRAFT/SUBJECT TO CHANGE - HSR ALIGNMENT IS NOT DETERMINED
 SOURCE: ESRI, 2019; San Jose County, 2016; San Benito County, 2016; Merced Counties, 2016.



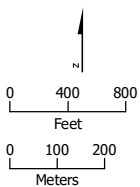
- | | |
|--|---|
|  HSR Right-of-Way |  Temporary Construction Easement |
|  Roadway Right-of-Way |  Temporary Utility Easement |
|  HSR Permanent Easement |  Non-Viable Remnant Parcel |
|  Permanent Utility Easement |  Parcel (APN Displayed) |


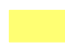





Alternative 1





PRELIMINARY DRAFT/SUBJECT TO CHANGE - HSR ALIGNMENT IS NOT DETERMINED
 SOURCE: ESRI, 2019; San Jose County, 2016; San Benito County, 2016; Merced Counties, 2016.



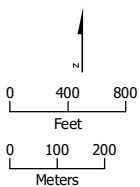
- | | |
|--|---|
|  HSR Right-of-Way |  Temporary Construction Easement |
|  HSR Permanent Easement |  Temporary Utility Easement |
|  Permanent Utility Easement |  Non-Viable Remnant Parcel |
|  Parcel (APN Displayed) | |

Alternative 1





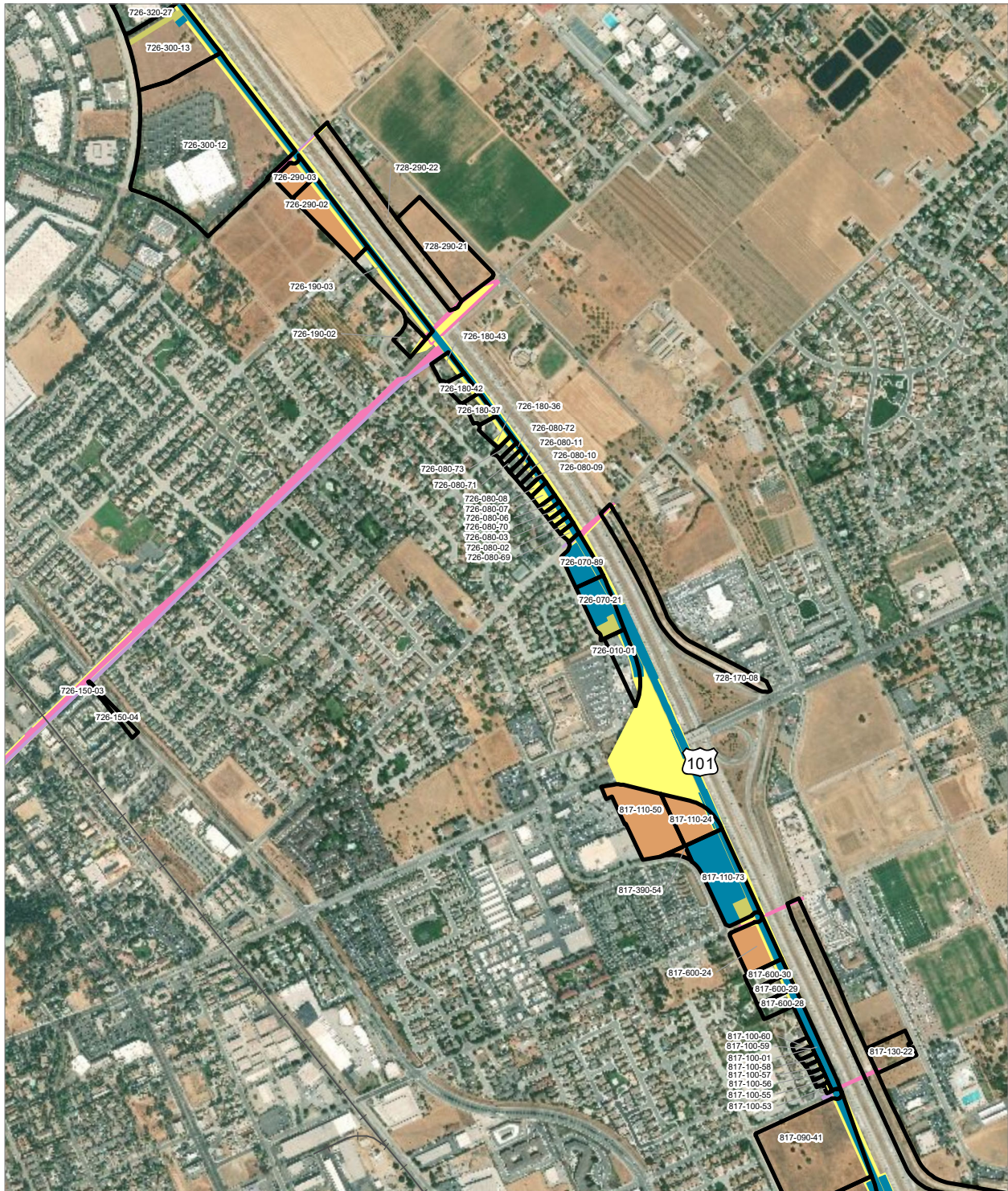
PRELIMINARY DRAFT/SUBJECT TO CHANGE - HSR ALIGNMENT IS NOT DETERMINED
 SOURCE: ESRI, 2019; San Jose County, 2016; San Benito County, 2016; Merced Counties, 2016.



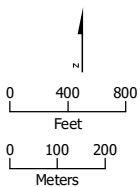
- Permanent Utility Easement
- Temporary Construction Easement
- Temporary Utility Easement
- Parcel (APN Displayed)






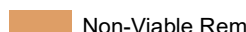


Alternative 1





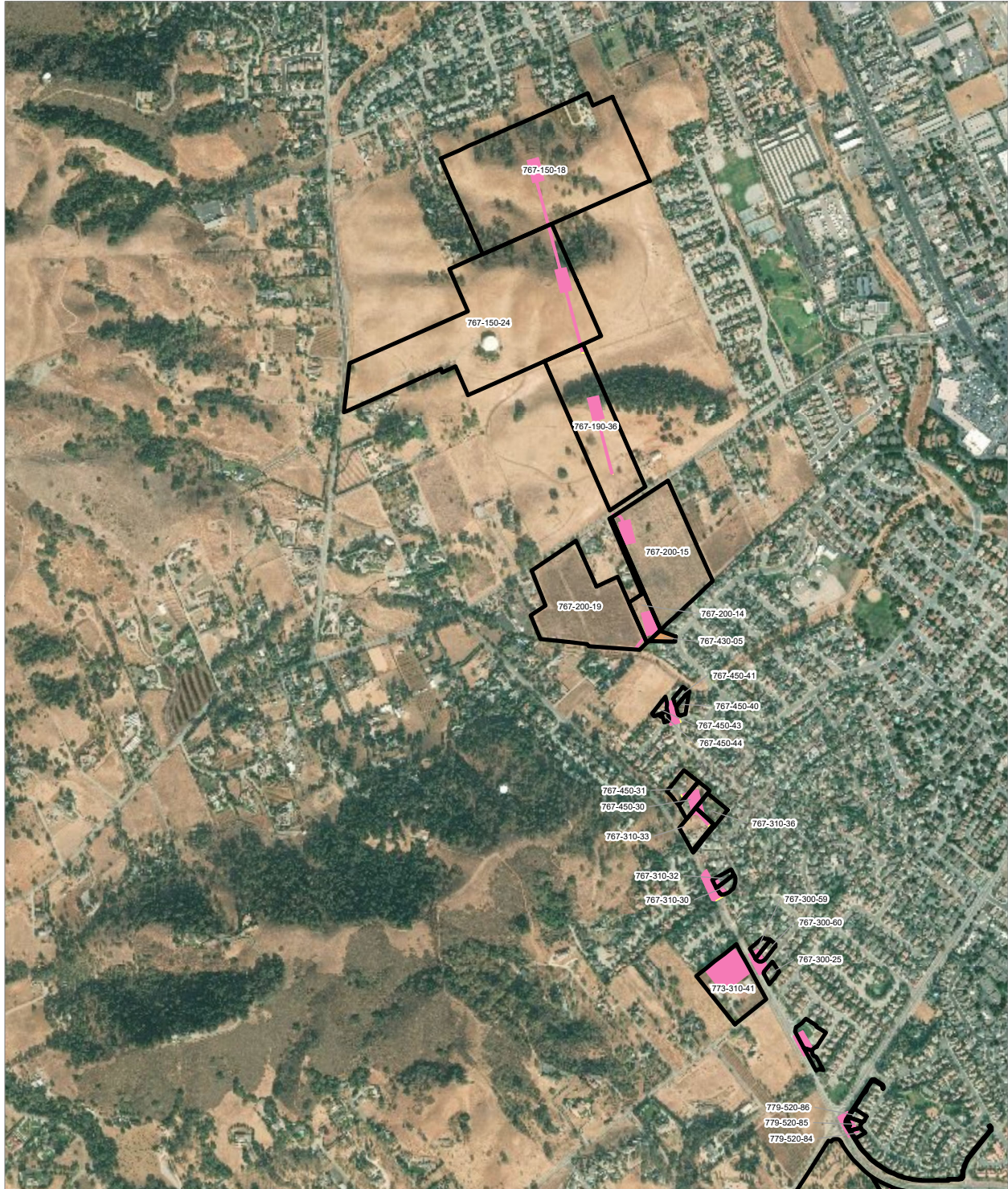
PRELIMINARY DRAFT/SUBJECT TO CHANGE - HSR ALIGNMENT IS NOT DETERMINED
 SOURCE: ESRI, 2019; San Jose County, 2016; San Benito County, 2016; Merced Counties, 2016.



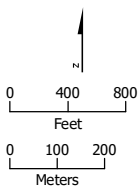
- | | |
|--|---|
|  HSR Right-of-Way |  Temporary Construction Easement |
|  Roadway Right-of-Way |  Temporary Utility Easement |
|  HSR Permanent Easement |  Non-Viable Remnant Parcel |
|  Permanent Utility Easement |  Parcel (APN Displayed) |

Alternative 1





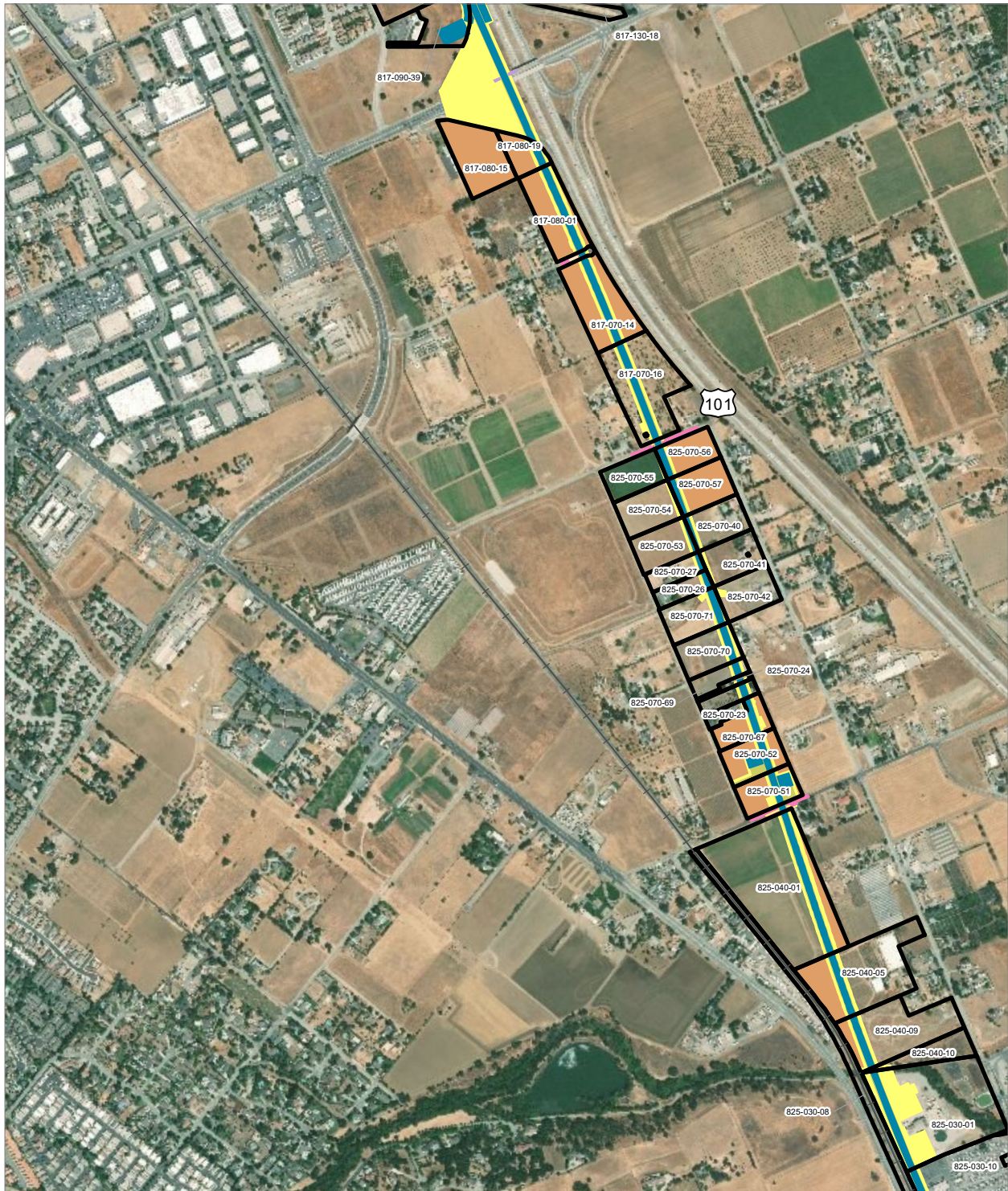
PRELIMINARY DRAFT/SUBJECT TO CHANGE - HSR ALIGNMENT IS NOT DETERMINED
 SOURCE: ESRI, 2019; San Jose County, 2016; San Benito County, 2016; Merced Counties, 2016.



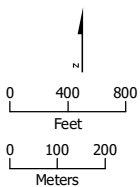
- Permanent Utility Easement
- Temporary Construction Easement
- Non-Viable Remnant Parcel
- Parcel (APN Displayed)


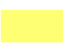






Alternative 1





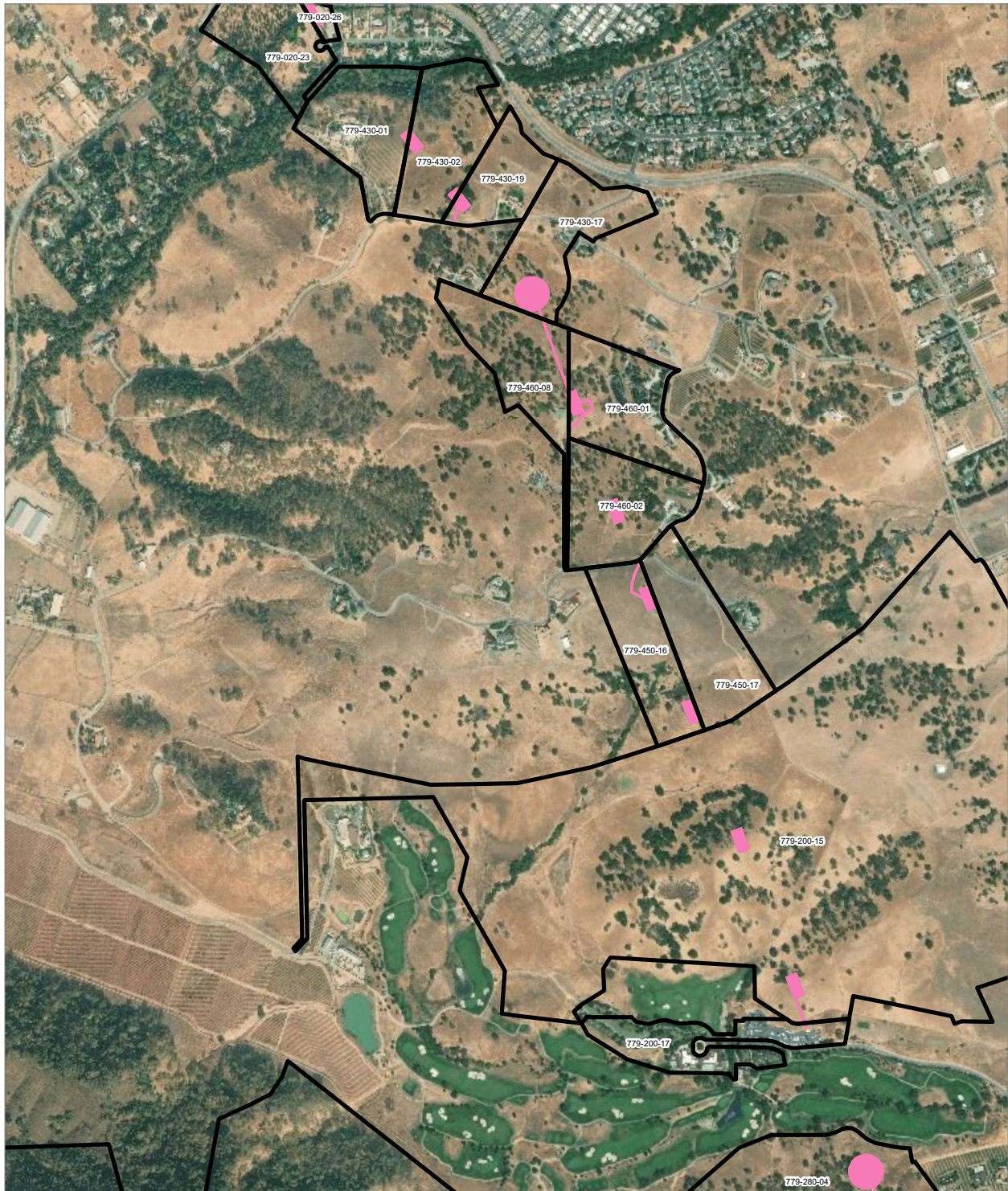
PRELIMINARY DRAFT/SUBJECT TO CHANGE - HSR ALIGNMENT IS NOT DETERMINED
 SOURCE: ESRI, 2019; San Jose County, 2016; San Benito County, 2016; Merced Counties, 2016.



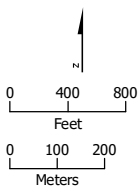
- | | |
|--|---|
|  HSR Right-of-Way |  Temporary Construction Easement |
|  Roadway Right-of-Way |  Temporary Utility Easement |
|  HSR Permanent Easement |  Non-Viable Remnant Parcel |
|  Permanent Utility Easement |  Parcel (APN Displayed) |

Alternative 1





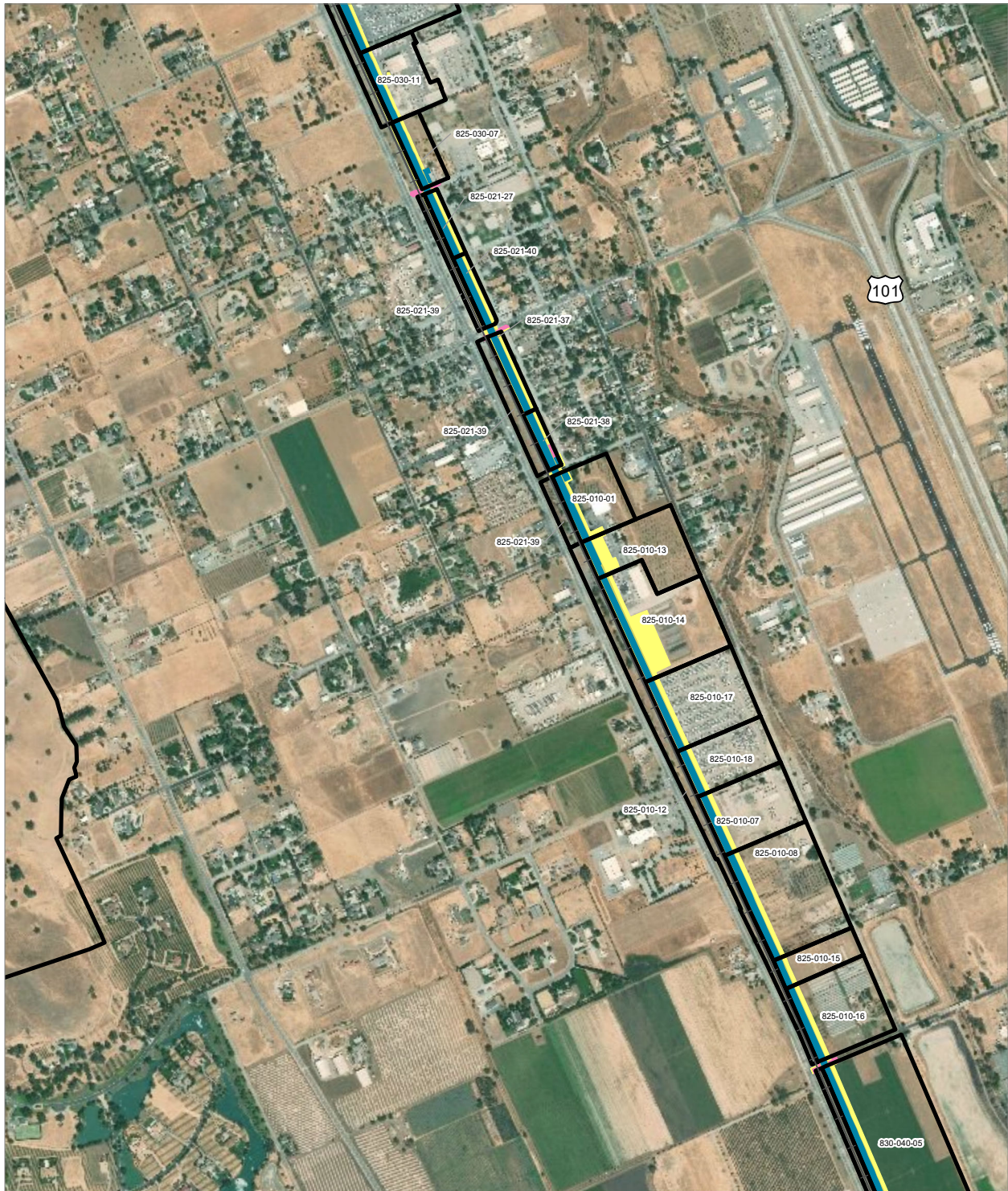
PRELIMINARY DRAFT/SUBJECT TO CHANGE - HSR ALIGNMENT IS NOT DETERMINED
 SOURCE: ESRI, 2019; San Jose County, 2016; San Benito County, 2016; Merced Counties, 2016.



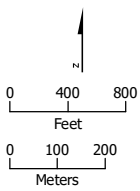
- Permanent Utility Easement
- Temporary Construction Easement
- Parcel (APN Displayed)

Alternative 1





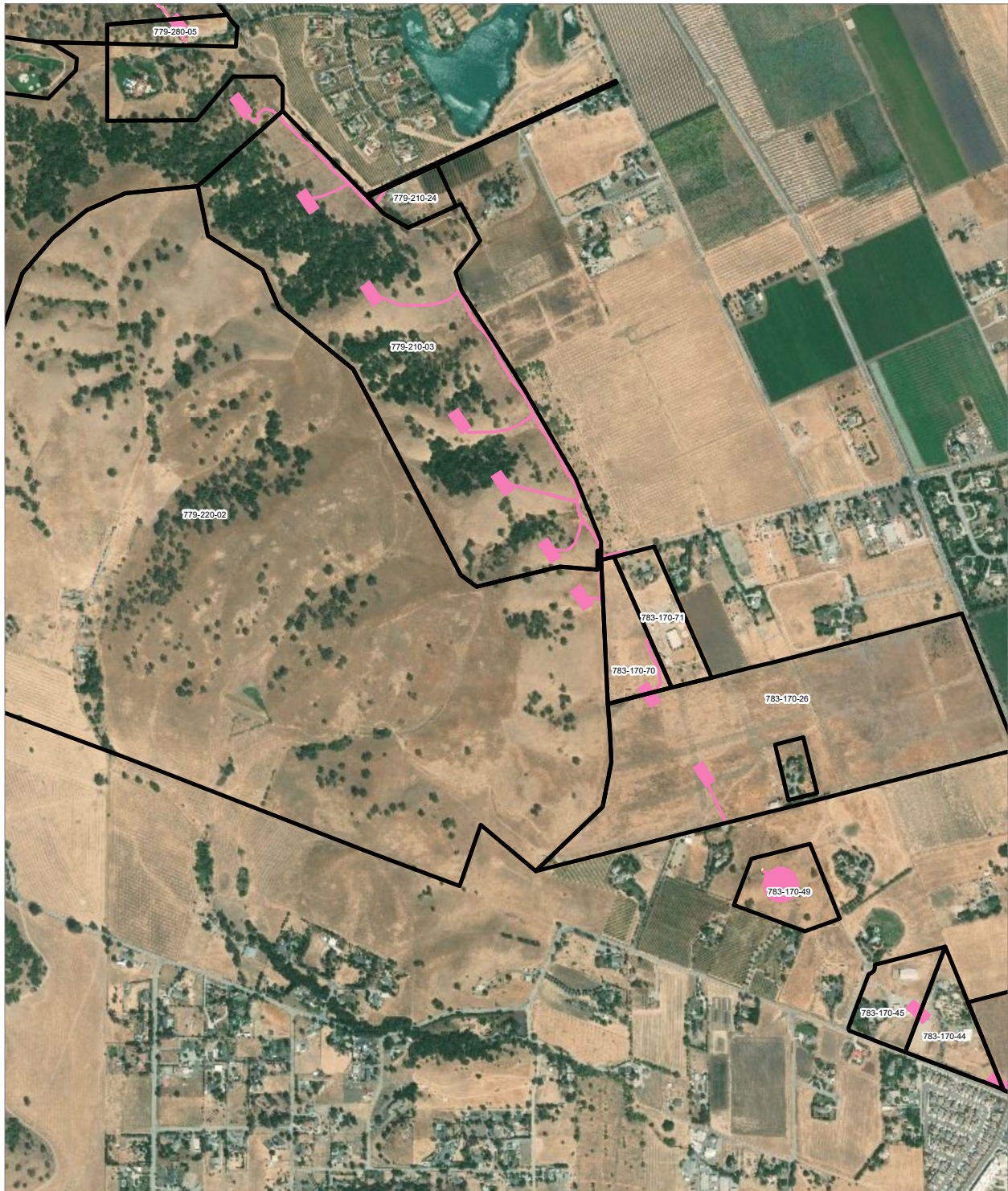
PRELIMINARY DRAFT/SUBJECT TO CHANGE - HSR ALIGNMENT IS NOT DETERMINED
 SOURCE: ESRI, 2019; San Jose County, 2016; San Benito County, 2016; Merced Counties, 2016.



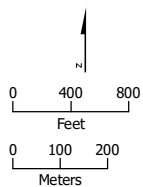
- HSR Right-of-Way
- Temporary Construction Easement
- HSR Permanent Easement
- Non-Viable Remnant Parcel
- Permanent Utility Easement
- Parcel (APN Displayed)

Alternative 1





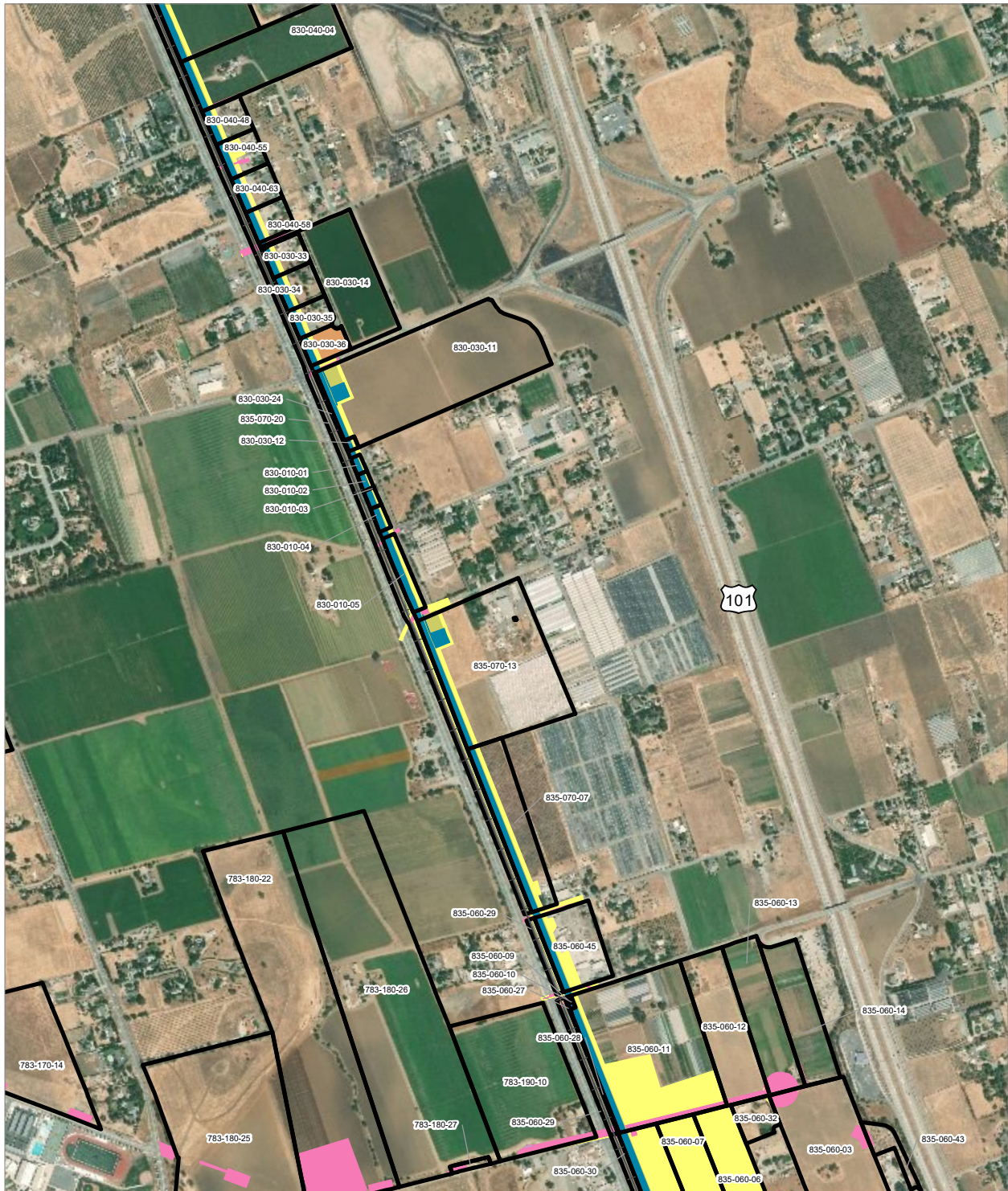
PRELIMINARY DRAFT/SUBJECT TO CHANGE - HSR ALIGNMENT IS NOT DETERMINED
 SOURCE: ESRI, 2019; San Jose County, 2016; San Benito County, 2016; Merced Counties, 2016.



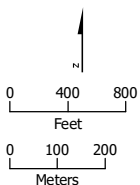
- Permanent Utility Easement
- Temporary Construction Easement
- Parcel (APN Displayed)

Alternative 1





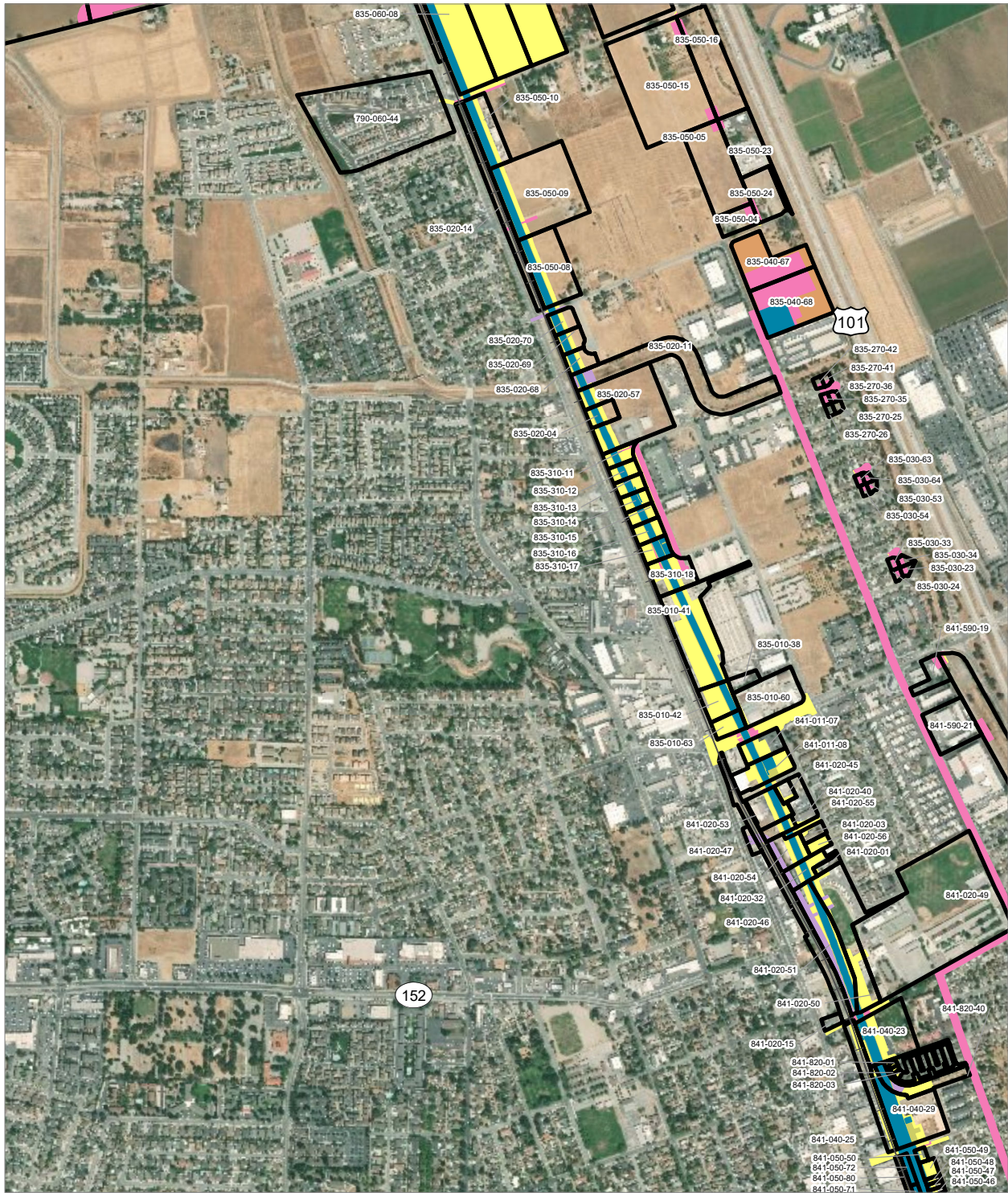
PRELIMINARY DRAFT/SUBJECT TO CHANGE - HSR ALIGNMENT IS NOT DETERMINED
 SOURCE: ESRI, 2019; San Jose County, 2016; San Benito County, 2016; Merced Counties, 2016.



- HSR Right-of-Way
- Roadway Right-of-Way
- HSR Permanent Easement
- Permanent Utility Easement
- Temporary Construction Easement
- Temporary Utility Easement
- Non-Viable Remnant Parcel
- Parcel (APN Displayed)

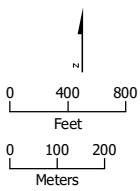
Alternative 1





PRELIMINARY DRAFT/SUBJECT TO CHANGE - HSR ALIGNMENT IS NOT DETERMINED
 SOURCE: ESRI, 2019; San Jose County, 2016; San Benito County, 2016; Merced Counties, 2016.

Alternative 1

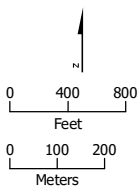


- HSR Right-of-Way
- Temporary Construction Easement
- Roadway Right-of-Way
- Temporary Utility Easement
- HSR Permanent Easement
- Non-Viable Remnant Parcel
- Permanent Utility Easement
- Parcel (APN Displayed)





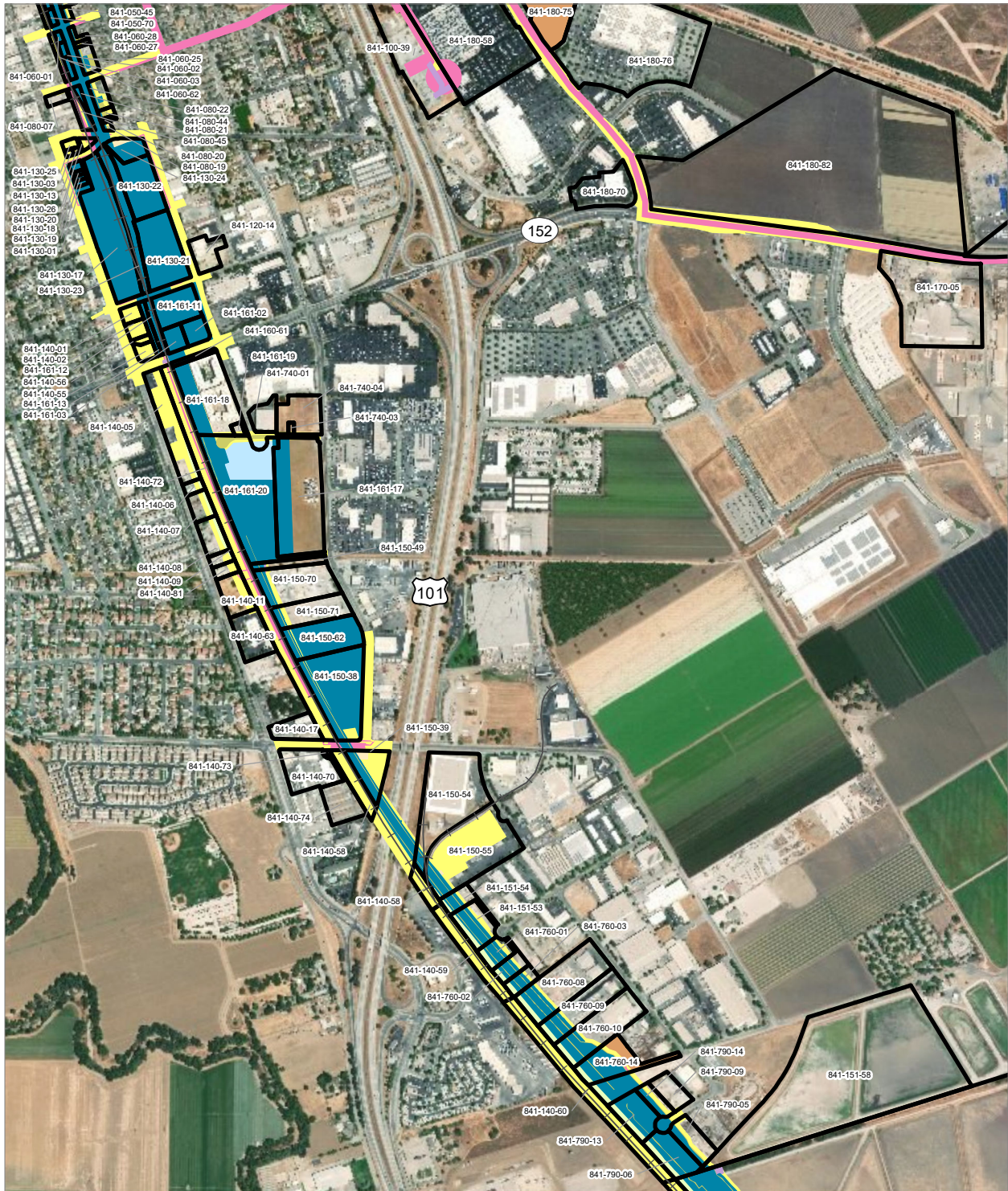
PRELIMINARY DRAFT/SUBJECT TO CHANGE - HSR ALIGNMENT IS NOT DETERMINED
 SOURCE: ESRI, 2019; San Jose County, 2016; San Benito County, 2016; Merced Counties, 2016.



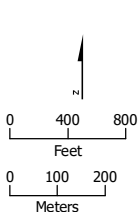
- HSR Right-of-Way
- Temporary Construction Easement
- Permanent Utility Easement
- Non-Viable Remnant Parcel
- Parcel (APN Displayed)





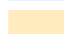

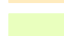



Alternative 1





PRELIMINARY DRAFT/SUBJECT TO CHANGE - HSR ALIGNMENT IS NOT DETERMINED
 SOURCE: ESRI, 2019; San Jose County, 2016; San Benito County, 2016; Merced Counties, 2016.



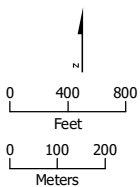
- | | |
|--|---|
|  HSR Right-of-Way |  Permanent Utility Easement |
|  Other Right-of-Way |  Temporary Construction Easement |
|  Roadway Right-of-Way |  Temporary Utility Easement |
|  Rail Right-of-Way |  Non-Viable Remnant Parcel |
|  HSR Permanent Easement |  Parcel (APN Displayed) |

Alternative 1





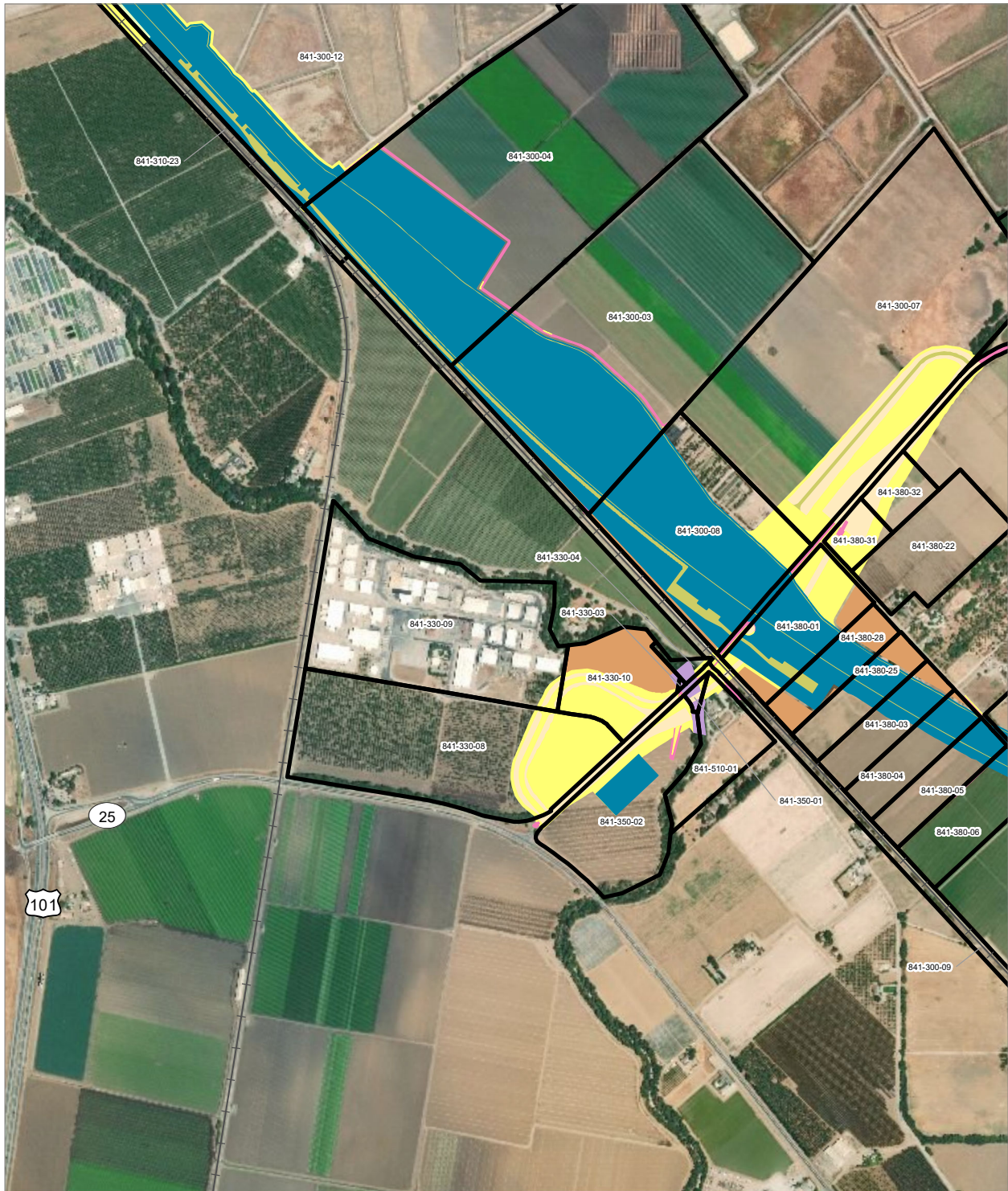
PRELIMINARY DRAFT/SUBJECT TO CHANGE - HSR ALIGNMENT IS NOT DETERMINED
 SOURCE: ESRI, 2019; San Jose County, 2016; San Benito County, 2016; Merced Counties, 2016.



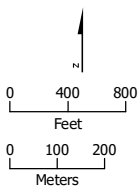
- Permanent Utility Easement
- Temporary Construction Easement
- Non-Viable Remnant Parcel
- Parcel (APN Displayed)

Alternative 1



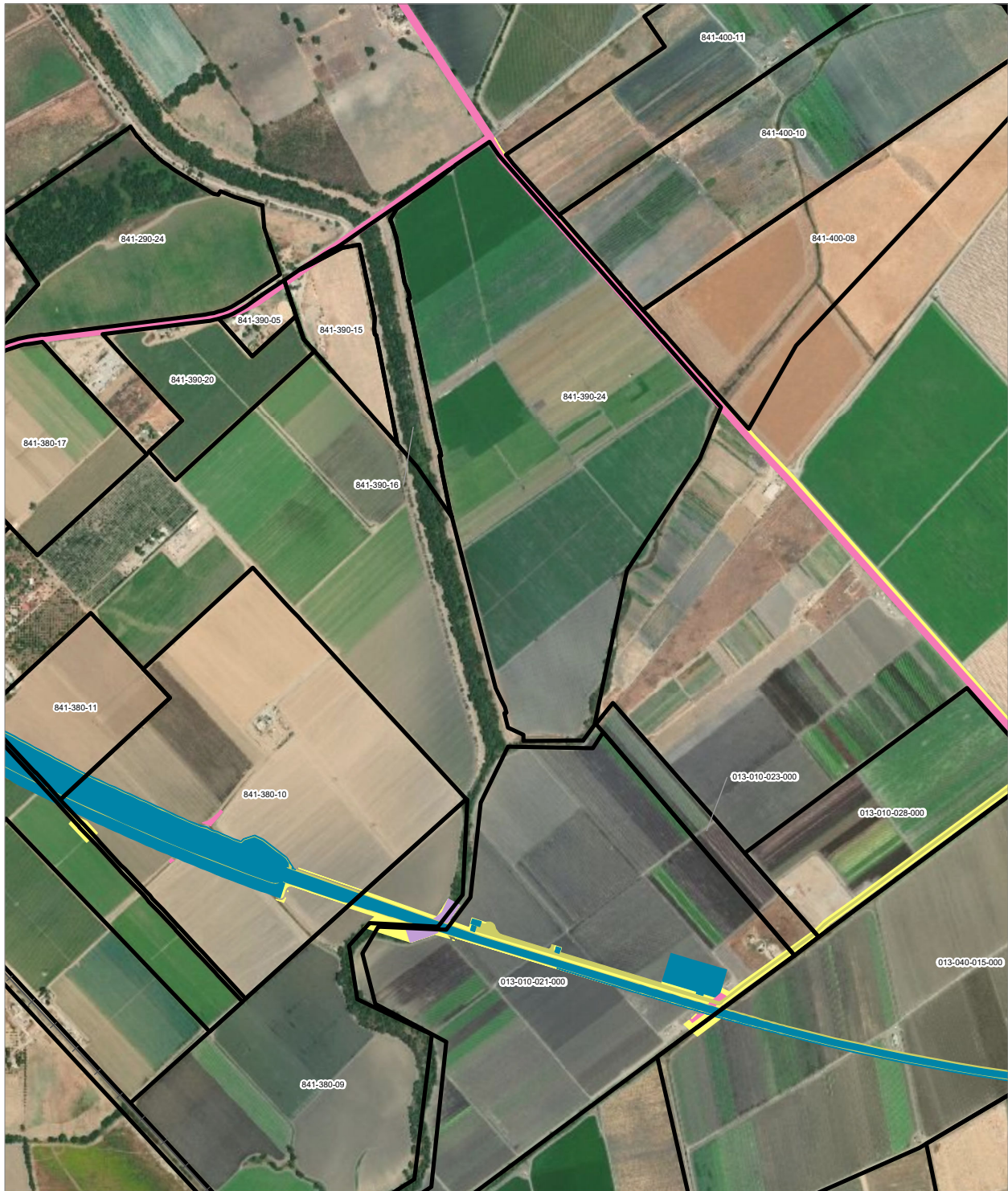


PRELIMINARY DRAFT/SUBJECT TO CHANGE - HSR ALIGNMENT IS NOT DETERMINED
 SOURCE: ESRI, 2019; San Jose County, 2016; San Benito County, 2016; Merced Counties, 2016.

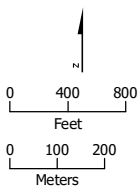


Alternative 1



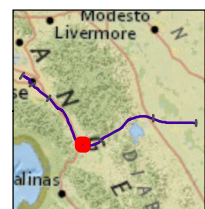


PRELIMINARY DRAFT/SUBJECT TO CHANGE - HSR ALIGNMENT IS NOT DETERMINED
 SOURCE: ESRI, 2019; San Jose County, 2016; San Benito County, 2016; Merced Counties, 2016.



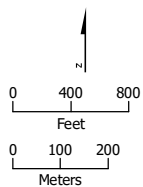
- HSR Right-of-Way
- Roadway Right-of-Way
- HSR Permanent Easement
- Permanent Utility Easement
- Temporary Construction Easement
- Temporary Utility Easement
- Non-Viable Remnant Parcel
- Parcel (APN Displayed)

Alternative 1





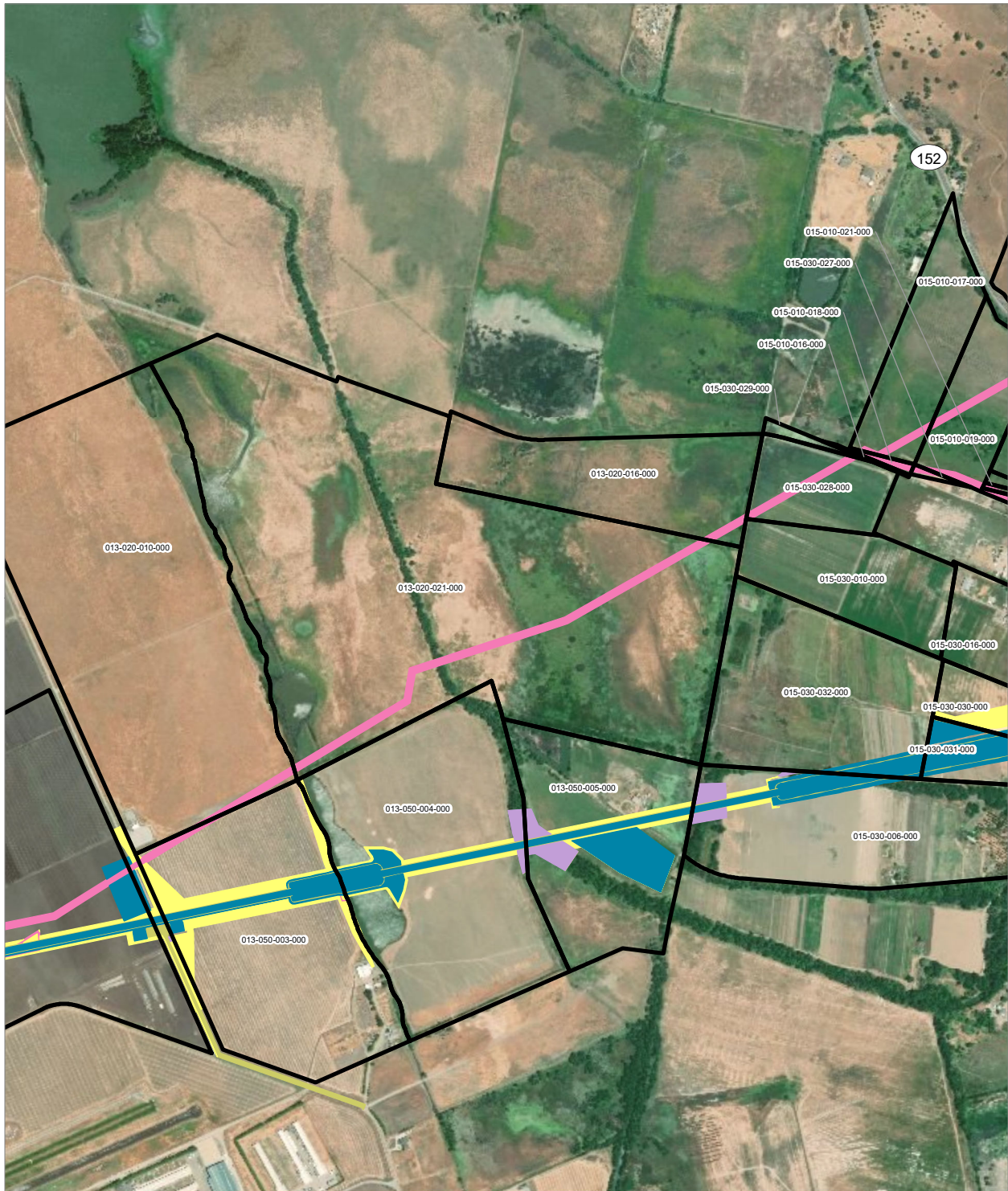
PRELIMINARY DRAFT/SUBJECT TO CHANGE - HSR ALIGNMENT IS NOT DETERMINED
 SOURCE: ESRI, 2019; San Jose County, 2016; San Benito County, 2016; Merced Counties, 2016.



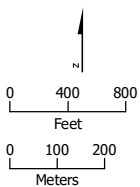
- HSR Right-of-Way
- HSR Permanent Easement
- Permanent Utility Easement
- Temporary Construction Easement
- Parcel (APN Displayed)

Alternative 1





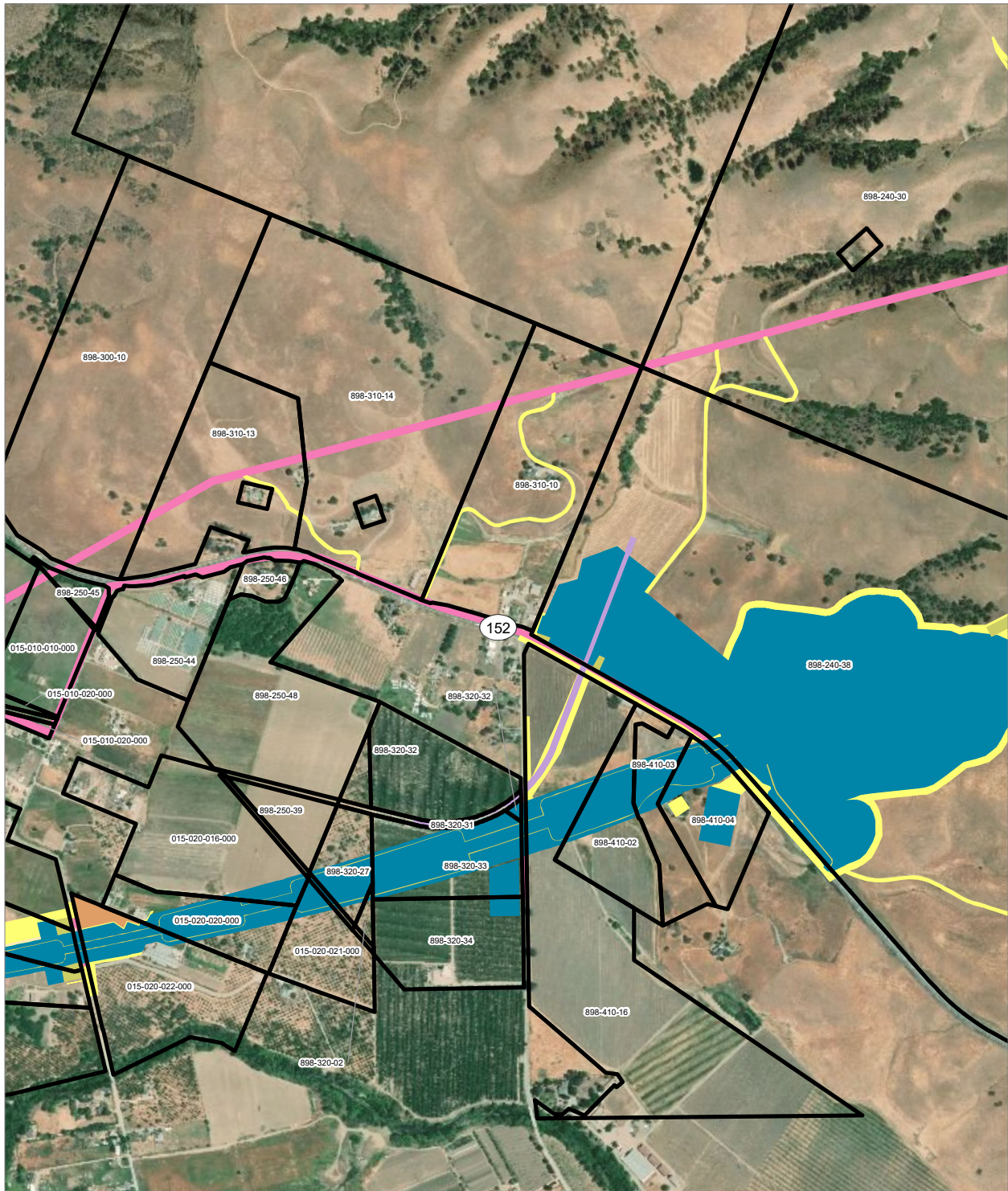
PRELIMINARY DRAFT/SUBJECT TO CHANGE - HSR ALIGNMENT IS NOT DETERMINED
 SOURCE: ESRI, 2019; San Jose County, 2016; San Benito County, 2016; Merced Counties, 2016.



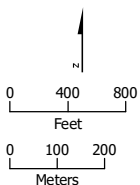
- | | |
|----------------------------|---------------------------------|
| HSR Right-of-Way | Temporary Construction Easement |
| Roadway Right-of-Way | Temporary Utility Easement |
| HSR Permanent Easement | Non-Viable Remnant Parcel |
| Permanent Utility Easement | Parcel (APN Displayed) |


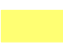






Alternative 1





PRELIMINARY DRAFT/SUBJECT TO CHANGE - HSR ALIGNMENT IS NOT DETERMINED
 SOURCE: ESRI, 2019; San Jose County, 2016; San Benito County, 2016; Merced Counties, 2016.



- | | |
|--|---|
|  HSR Right-of-Way |  Temporary Construction Easement |
|  Roadway Right-of-Way |  Temporary Utility Easement |
|  HSR Permanent Easement |  Non-Viable Remnant Parcel |
|  Permanent Utility Easement |  Parcel (APN Displayed) |

Alternative 1

