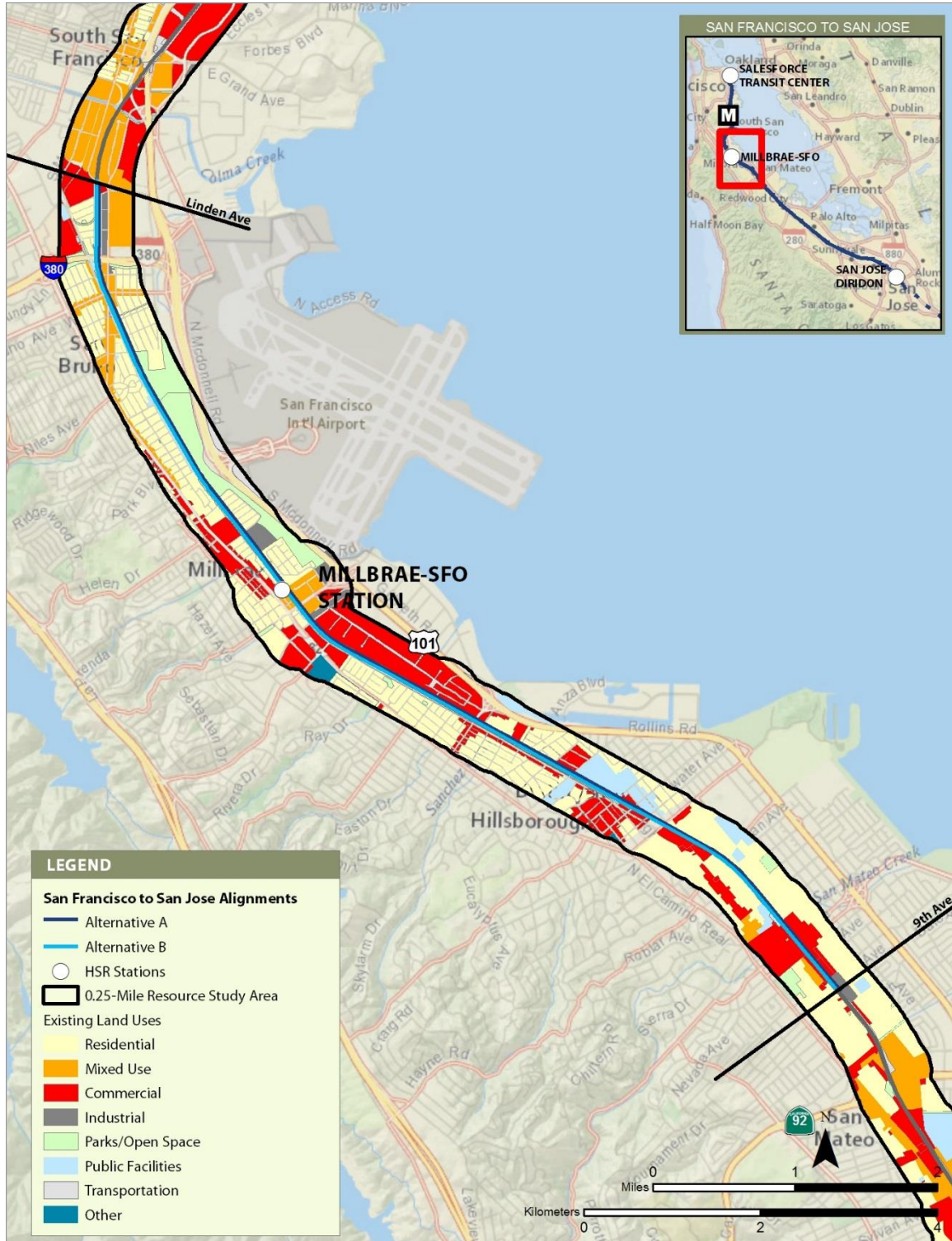


## **APPENDIX 3.13-A: GENERAL PLAN LAND USE MAPS**



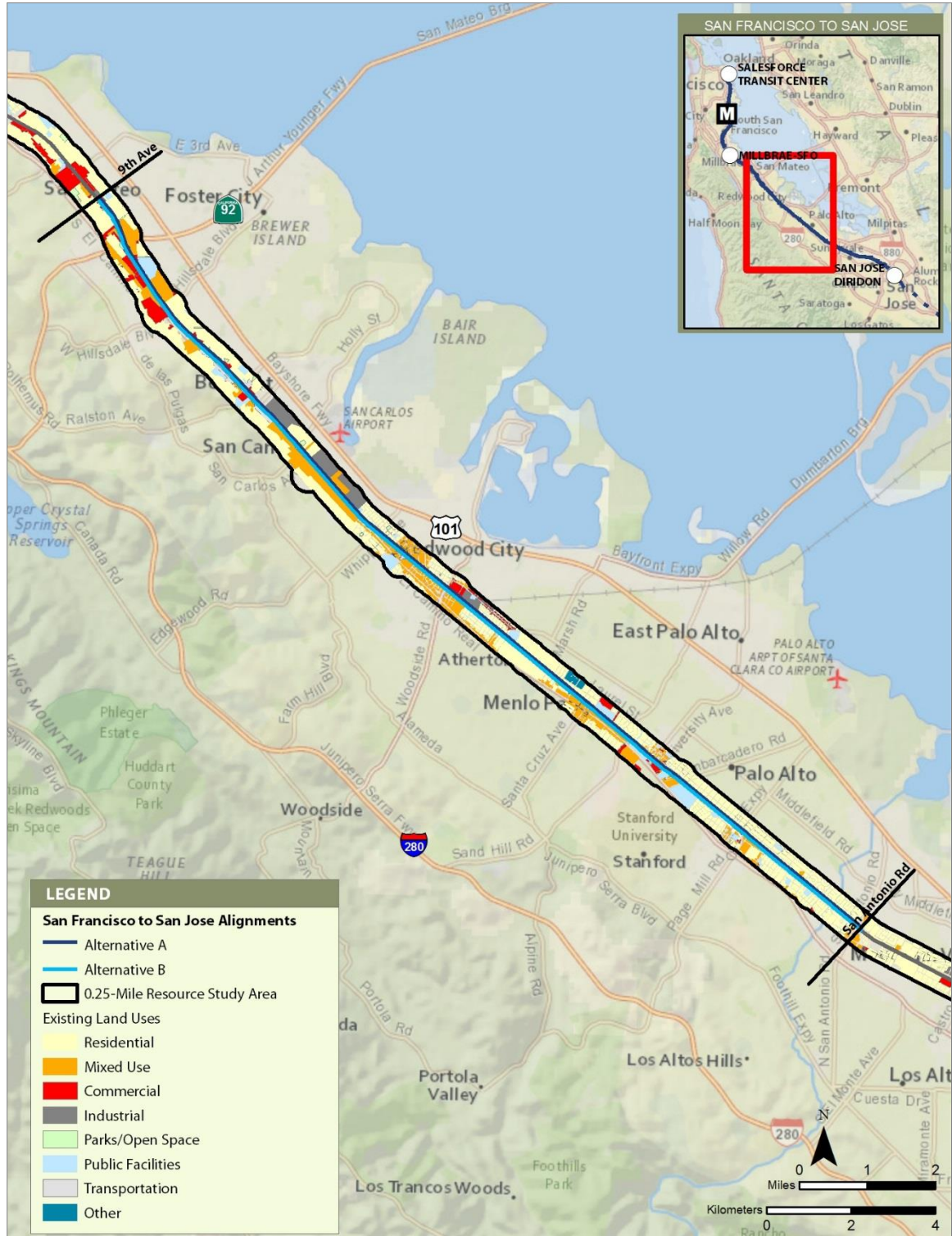




Sources: Authority 2019a; City of Belmont 2016; City of Burlingame 2015; City of Millbrae 2009; City of Redwood City 2010; City of San Bruno 2009; City of San Carlos 2009; City of San Mateo 2010  
MAY 2020

**Figure 2 General Plan Land Use Designations—San Bruno to San Mateo Subsection**





Sources: Authority 2019a; City of Menlo Park 2016; City of Palo Alto 2016, 2017; County of San Mateo 2011

MAY 2020

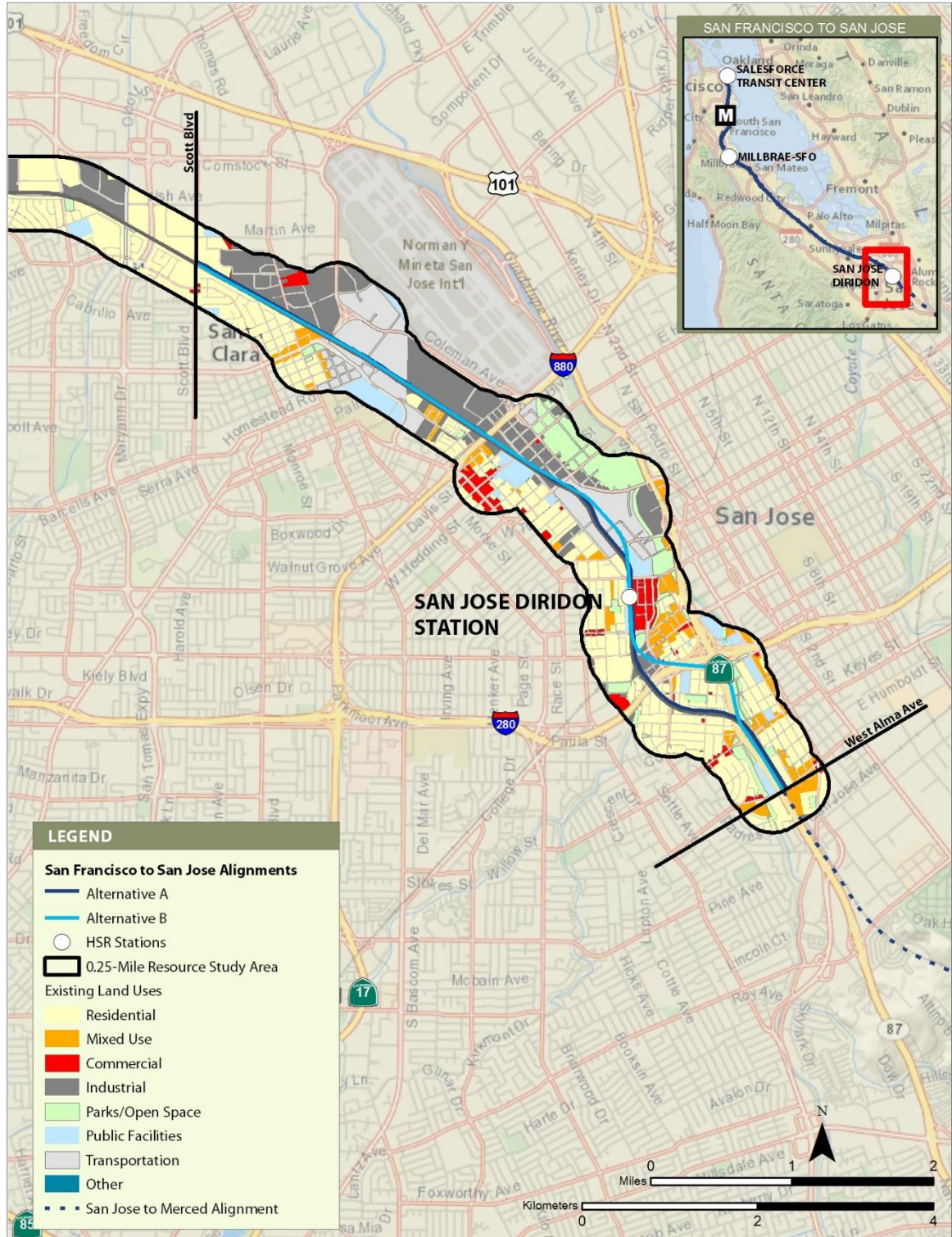
**Figure 3 General Plan Land Use Designations—San Mateo to Palo Alto Subsection**



Sources: Authority 2019a, 2019b; City of Mountain View 2012, 2016; City of Santa Clara 2010, 2016; City of Sunnyvale 2011 MAY 2020

**Figure 4 General Plan Land Use Designations—Mountain View to Santa Clara Subsection**





**Figure 5 General Plan Land Use Designations—San Jose Diridon Station Approach Subsection**

## References

- California High-Speed Rail Authority (Authority). 2019a. *San Francisco to San Jose Project Section Record Preliminary Engineering for Project Definition*. April 2019.
- . 2019b. *San Jose to Merced Project Section Record Preliminary Engineering for Project Definition*. May 2019.
- City and County of San Francisco. 2015. Land Use Data. <https://data.sfgov.org/Housing-and-Buildings/Land-Use/us3s-fp9q/data> (accessed November 22, 2016).
- . 2016. SF Open Data. <https://data.sfgov.org/Housing-and-Buildings/Land-Use/us3s-fp9q> (accessed November 3, 2016).
- City of Belmont. 2016. *Land Use Element Public Review Draft Belmont General Plan*. April 2016. [www.belmont-2035generalplan.com/library.html](http://www.belmont-2035generalplan.com/library.html) (accessed November 22, 2016).
- City of Brisbane. 1994. *The 1994 General Plan: City of Brisbane*. Amended January 4, 2018. [www.brisbaneca.org/general-plan](http://www.brisbaneca.org/general-plan) (accessed May 15, 2019).
- City of Burlingame. 2015. *Burlingame General Plan*. February 2015. [www.burlingame.org/index.aspx?page=151](http://www.burlingame.org/index.aspx?page=151) (accessed November 3, 2016).
- City of Menlo Park. 2016. *City of Menlo Park Zoning Map and General Plan Land Use Diagram Sheet Layout and Legend*. April 2015. <http://menlopark.org/DocumentCenter/View/187> (accessed November 22, 2016).
- City of Millbrae. 2009. *City of Millbrae Land Use Plan*. September 22, 2009. [www.ci.millbrae.ca.us/home/showdocument?id=5706](http://www.ci.millbrae.ca.us/home/showdocument?id=5706) (accessed November 22, 2016).
- City of Mountain View. 2012. *Mountain View 2030 General Plan*. Adopted July 10, 2012. [www.mountainview.gov/civicax/filebank/blobdload.aspx?blobid=10702](http://www.mountainview.gov/civicax/filebank/blobdload.aspx?blobid=10702) (accessed November 4, 2016).
- . 2016. City of Mountain View OpenGIS. <http://data.mountainview.opendata.arcgis.com/datasets> (accessed November 4, 2016).
- City of Palo Alto. 2016. Geospatial Information Systems. October 18, 2016. [www.cityofpaloalto.org/gov/depts/it/innovation/gis.asp](http://www.cityofpaloalto.org/gov/depts/it/innovation/gis.asp) (accessed November 4, 2016).
- . 2017. *City of Palo Alto Comprehensive Plan Land Use Designation Map*. <https://www.cityofpaloalto.org/civicax/filebank/documents/8188>
- City of Redwood City. 2010. *Redwood City General Plan*. October 11, 2010. [www.redwoodcity.org/departments/community-development-department/planning-housing/planning-services/general-plan-precise-plans/general-plan](http://www.redwoodcity.org/departments/community-development-department/planning-housing/planning-services/general-plan-precise-plans/general-plan) (accessed November 3, 2016).
- City of San Bruno. 2009. *San Bruno General Plan*. Prepared by Dyett and Bhatia. Adopted March 24, 2009. <https://sanbruno.ca.gov/civicax/filebank/blobdload.aspx?BlobID=24024> (accessed November 2, 2016).
- City of San Carlos. 2009. *San Carlos 2030 General Plan*. Adopted October 12, 2009. [http://cityofsancarlos.org/generalplanupdate/whats\\_new/\\_san\\_carlos\\_2030\\_general\\_plan\\_adopted.asp](http://cityofsancarlos.org/generalplanupdate/whats_new/_san_carlos_2030_general_plan_adopted.asp) (accessed November 3, 2016).
- City of San Jose. 2018. *Envision: San José 2040 General Plan*. Amended February 27, 2018. <https://www.sanjoseca.gov/your-government/departments/planning-building-code-enforcement/planning-division/citywide-planning/envision-san-jos-2040-general-plan>
- City of San Mateo. 2010. *City of San Mateo Land Use Plan (Figure LU-3)*. October 2010. [www.cityofsanmateo.org/DocumentCenter/Home/View/7206](http://www.cityofsanmateo.org/DocumentCenter/Home/View/7206) (accessed November 22, 2016).



- City of Santa Clara. 2010. *Celebrating Our Past, Present, and Future: City of Santa Clara 2010–2035 General Plan*. Adopted November 16, 2010.  
<http://santaclaraca.gov/government/departments/community-development/planning-division/general-plan> (accessed November 4, 2016).
- . 2016. Santa Clara Public Data Portal.  
<https://map.santaclaraca.gov/portalhelp/opendata.html> (accessed July 1, 2016).
- City of South San Francisco. 1999. *South San Francisco General Plan*. Adopted October 1999.  
[www.ssf.net/360/Read-the-Plan](http://www.ssf.net/360/Read-the-Plan) (accessed November 2, 2016).
- City of Sunnyvale. 2011. *Sunnyvale General Plan*. Adopted July 26, 2011.  
<http://ecityhall.sunnyvale.ca.gov/cd/GeneralPlan.pdf> (accessed November 3, 2016).
- County of San Mateo. 2011. *North Fair Oaks Community Plan*. Adopted November 15, 2011.  
<http://planning.smcgov.org/north-fair-oaks-community-plan> (accessed November 3, 2016).