

## APPENDIX 3.8-A: LIST OF AQUATIC RESOURCES CROSSED



## APPENDIX 3.8-A: LIST OF AQUATIC RESOURCES CROSSED

**Table 1 Aquatic Resources Crossed by the Project Alternatives**

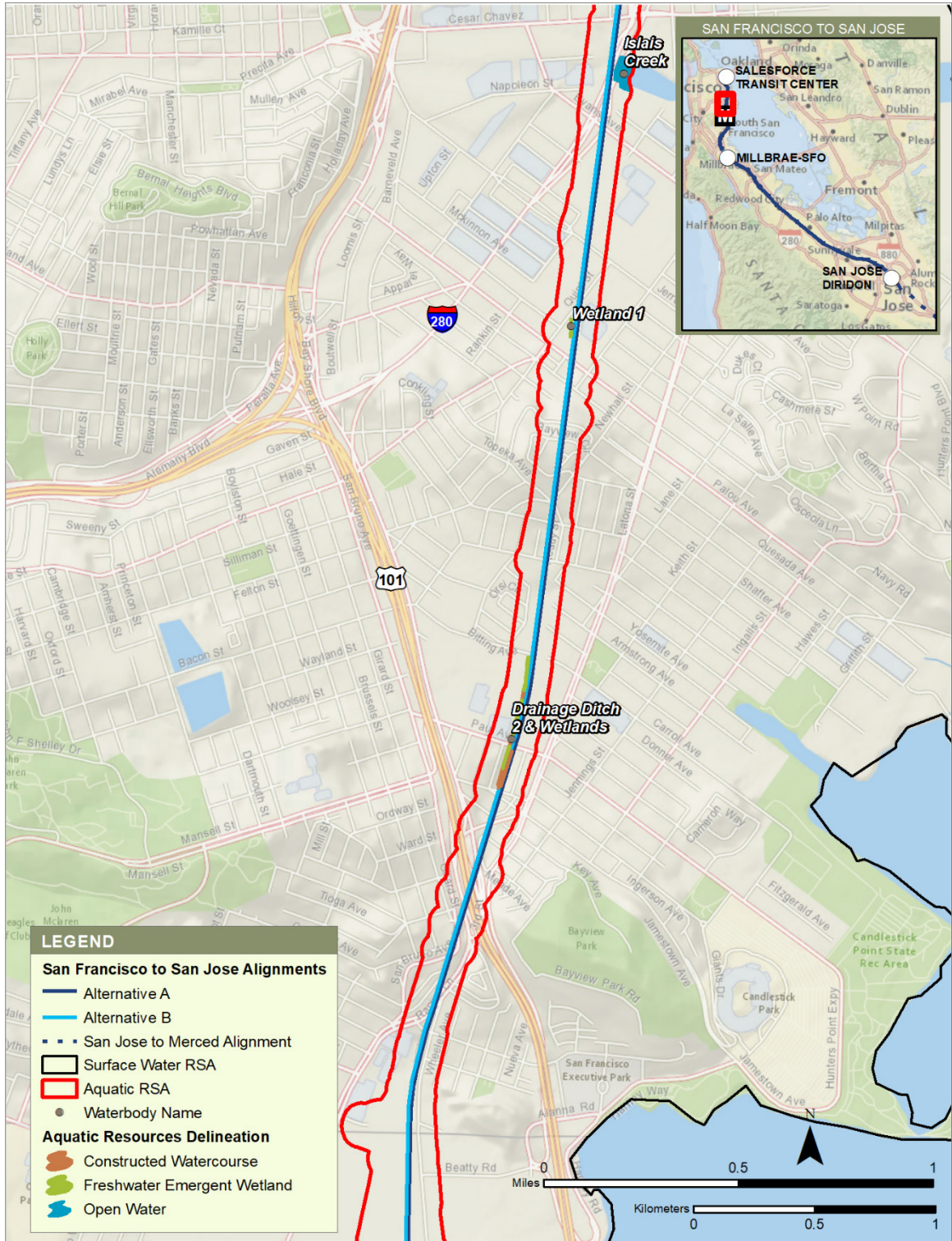
Aquatic Resource	San Francisco to South San Francisco	San Bruno to San Mateo	San Mateo to Palo Alto	Mountain View to Santa Clara	San Jose Diridon Station Approach
Constructed basin	Visitacion Creek Constructed Basins	Not present	Not present	Not present	Not present
Constructed watercourse	Drainage Ditch 1, 2, and 13, Visitacion Creek, Visitacion Creek Tributary, Guadalupe Valley Creek, Oyster Point Channel, Colma Creek	Drainage Ditch 3, 4, 5, 6, 7, and 8, El Zanjon, Highline Creek, Highline Creek Tributary, El Portal Canal, Mills Creek, Easton Creek, Sanchez Creek, Sanchez Creek Tributary, Burlingame Creek	Drainage Ditch 9, 11, and 12, Leslie Creek, Borel Creek, Laurel Creek, Laurel Creek Tributary, Brittan (Arroyo) Creek, Pulgas Creek, Cordilleras Creek, Arroyo Ojo de Agua, Redwood Creek, Atherton Channel, Constructed Watercourse 1, Matadero Creek, Barron Creek, Adobe Creek	Permanente Creek, Sunnyvale East Channel, Calabazas Creek, El Camino Storm Drain, San Tomas Aquino Creek	Guadalupe River
Freshwater emergent wetland	Wetland 1, 2, and 3, Drainage Ditch 2 Wetlands, Brisbane Wetlands, Visitacion Creek Tributary Wetland, Visitacion Creek Wetlands	Wetland 4, Highline Creek Tributary Wetlands, Mills Creek Tributary Wetland, Sanchez Creek Tributary Wetland	Wetland 5, Fiesta Creek, Laurel Creek Tributary Wetland	Not present	Not present
Natural watercourse	Guadalupe Valley Creek	San Mateo Creek	Borel Creek, Belmont Creek, Cordilleras Creek, San Francisquito Creek	Stevens Creek	Los Gatos Creek
Open water	Brisbane Lagoon	Not present	Not present	Not present	Not present
Palustrine forested wetland	Not present	Not present	Not present	Not present	Palustrine Forested Wetland 6
Saline emergent wetland	Guadalupe Valley Creek Saline Wetland, Brisbane Lagoon Saline Wetlands, Saline Wetland 1	Not present	Not present	Not present	Not present
Scrub/shrub wetland	Visitacion Creek Scrub/Shrub Wetlands, Brisbane Lagoon Scrub/Shrub Wetlands	Not present	Not present	Not present	Not present

Sources: Authority 2019a, 2019b, 2020a, 2020b, 2020c, 2020d



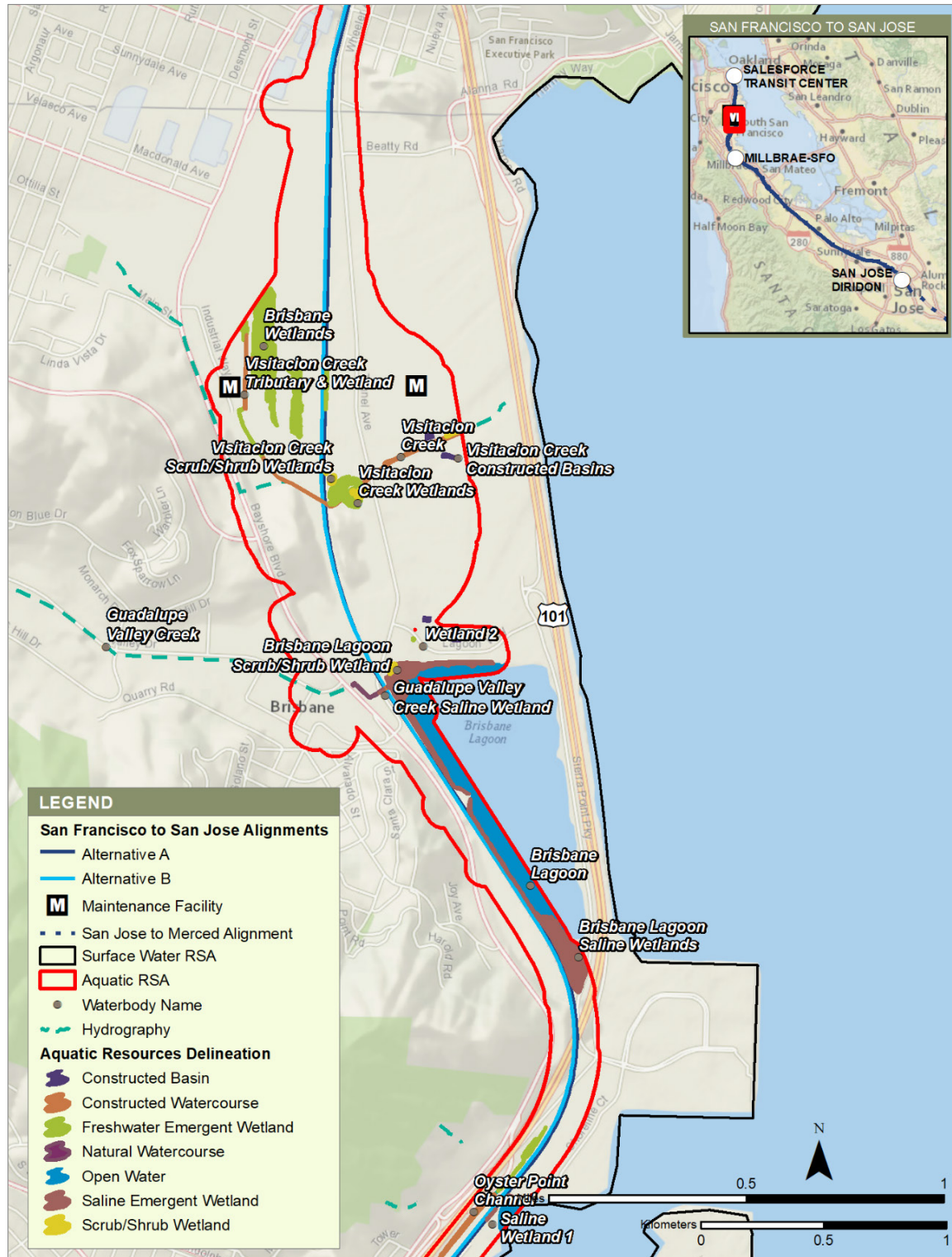
Sources: CAL FIRE 2013; Authority 2020c; CDFW 2016; USGS 2016; DataSF 2016; County of San Mateo Information Services 2016; SCVWD 2012; Oakland Museum of California 2005a-i, 2007a-l  
 MARCH 2020

**Figure 1 Aquatic Resources, San Francisco to South San Francisco Subsection (Part 1 of 4)**



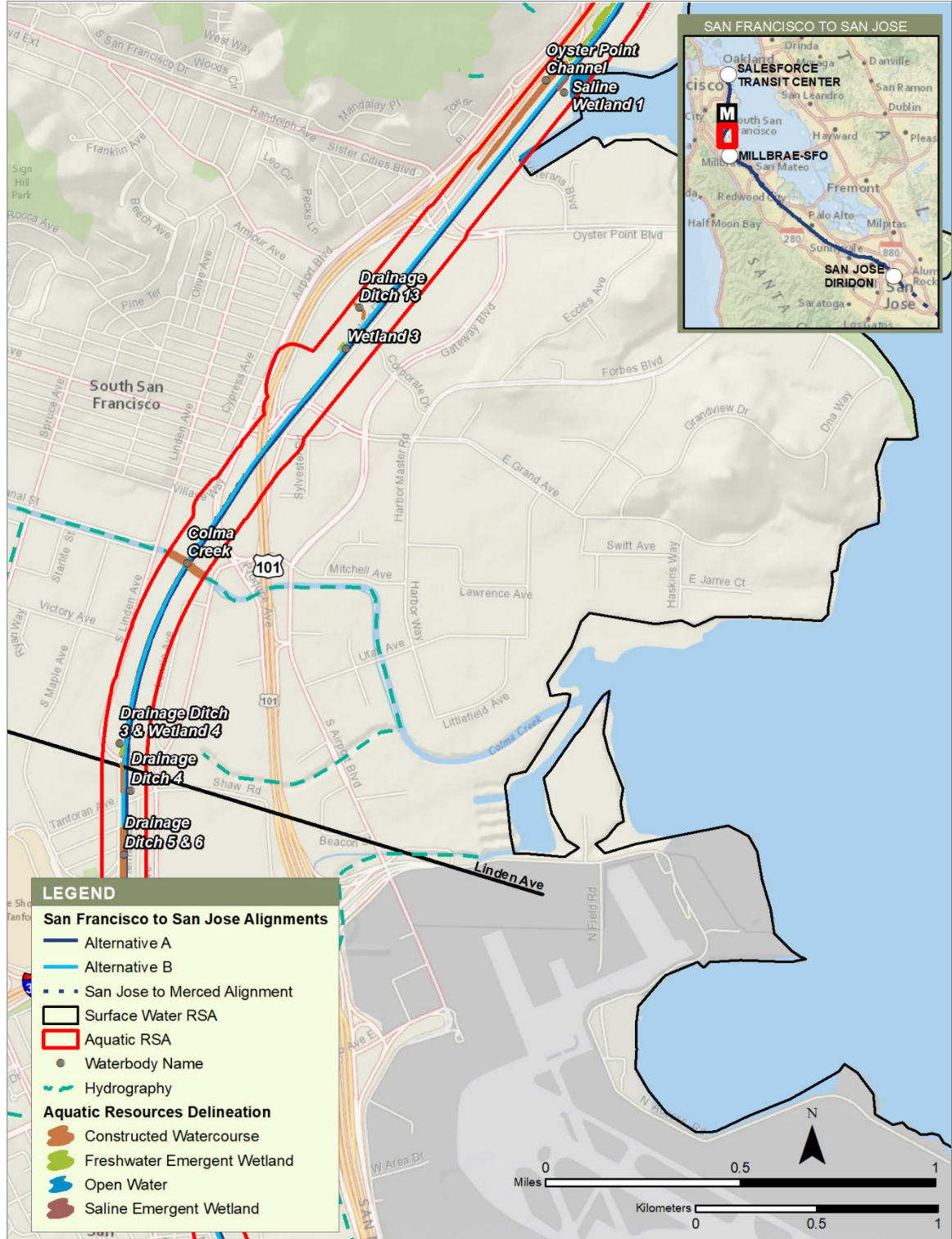
Sources: CAL FIRE 2013; Authority 2020c; CDFW 2016; USGS 2016; DataSF 2016; County of San Mateo Information Services 2016; SCVWD 2012; Oakland Museum of California 2005a-i, 2007a-l  
MARCH 2020

**Figure 2 Aquatic Resources, San Francisco to South San Francisco Subsection (Part 2 of 4)**



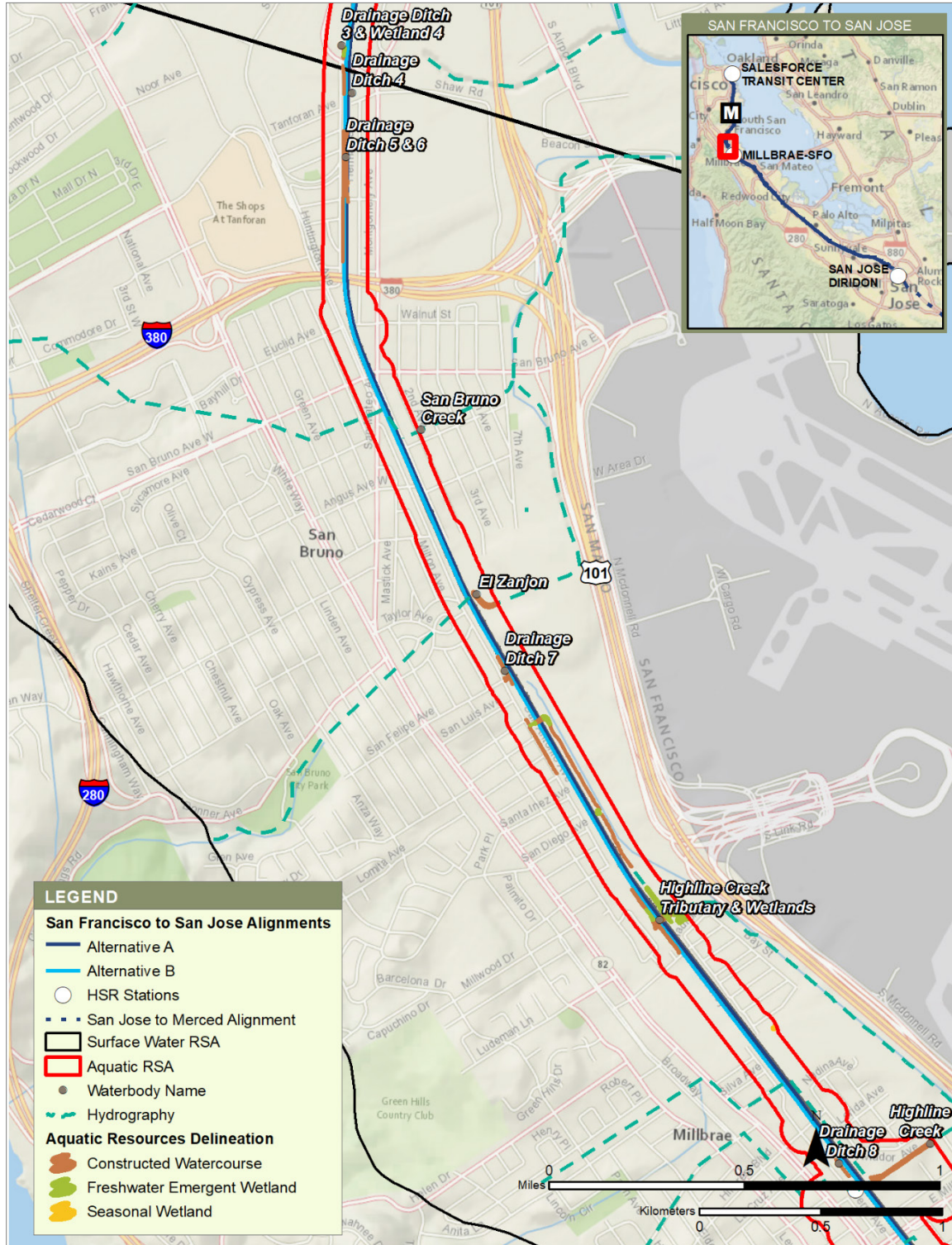
Sources: CAL FIRE 2013; Authority 2020c; CDFW 2016; USGS 2016; DataSF 2016; County of San Mateo Information Services 2016; SCVWD 2012; Oakland Museum of California 2005a-i, 2007a-l  
 MARCH 2020

**Figure 3 Aquatic Resources, San Francisco to South San Francisco Subsection (Part 3 of 4)**



Sources: CAL FIRE 2013; Authority 2020a; CDFW 2016; USGS 2016; DataSF 2016; County of San Mateo Information Services 2016; SCVWD 2012; Oakland Museum of California 2005a-i, 2007a-l  
MARCH 2020

**Figure 4 Aquatic Resources, San Francisco to South San Francisco Subsection (Part 4 of 4)**



Sources: CAL FIRE 2013; Authority 2020c; CDFW 2016; USGS 2016; DataSF 2016; County of San Mateo Information Services 2016; SCVWD 2012; Oakland Museum of California 2005a-l, 2007a-l  
MARCH 2020

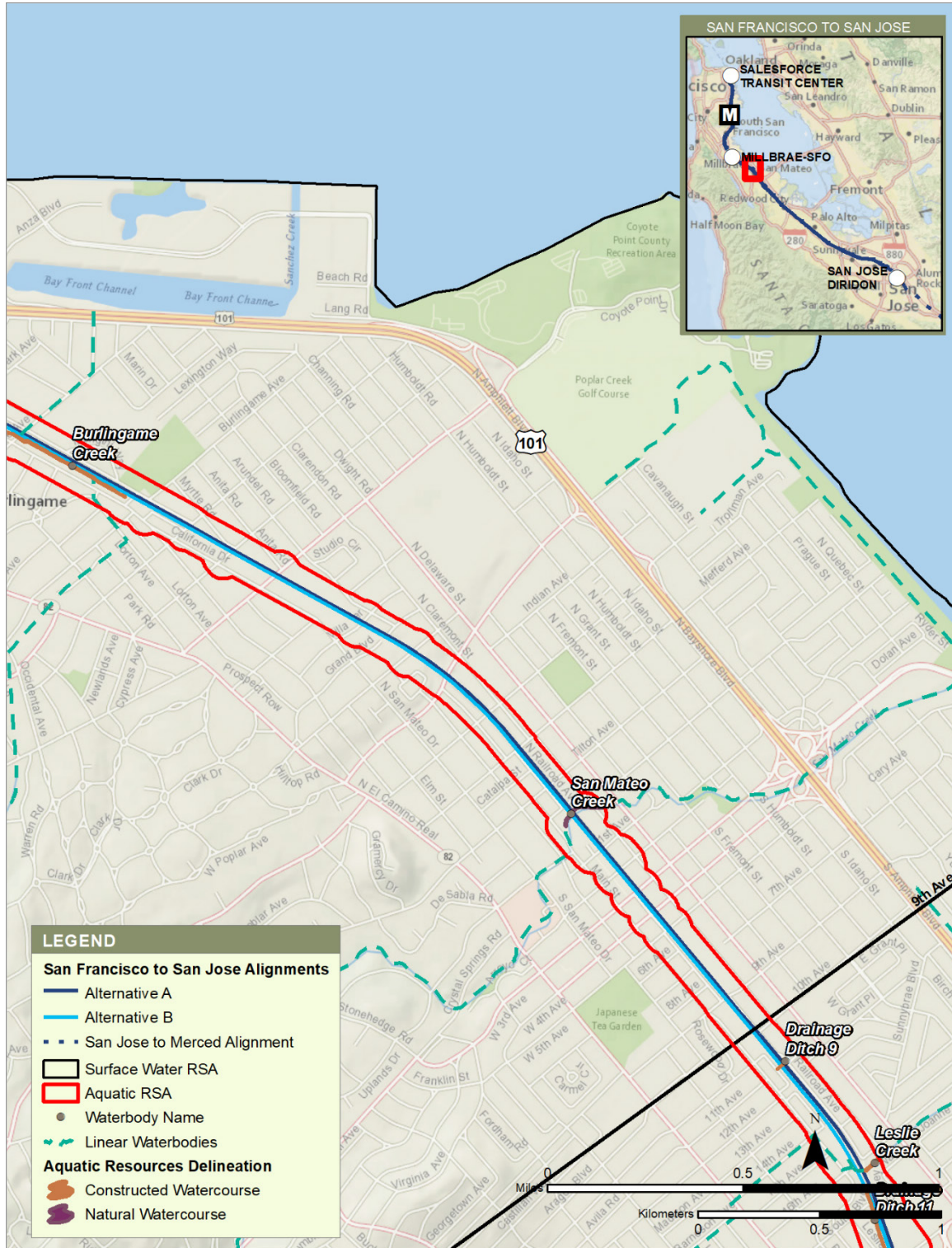
**Figure 5 Aquatic Resources, San Bruno to San Mateo Subsection (Part 1 of 3)**





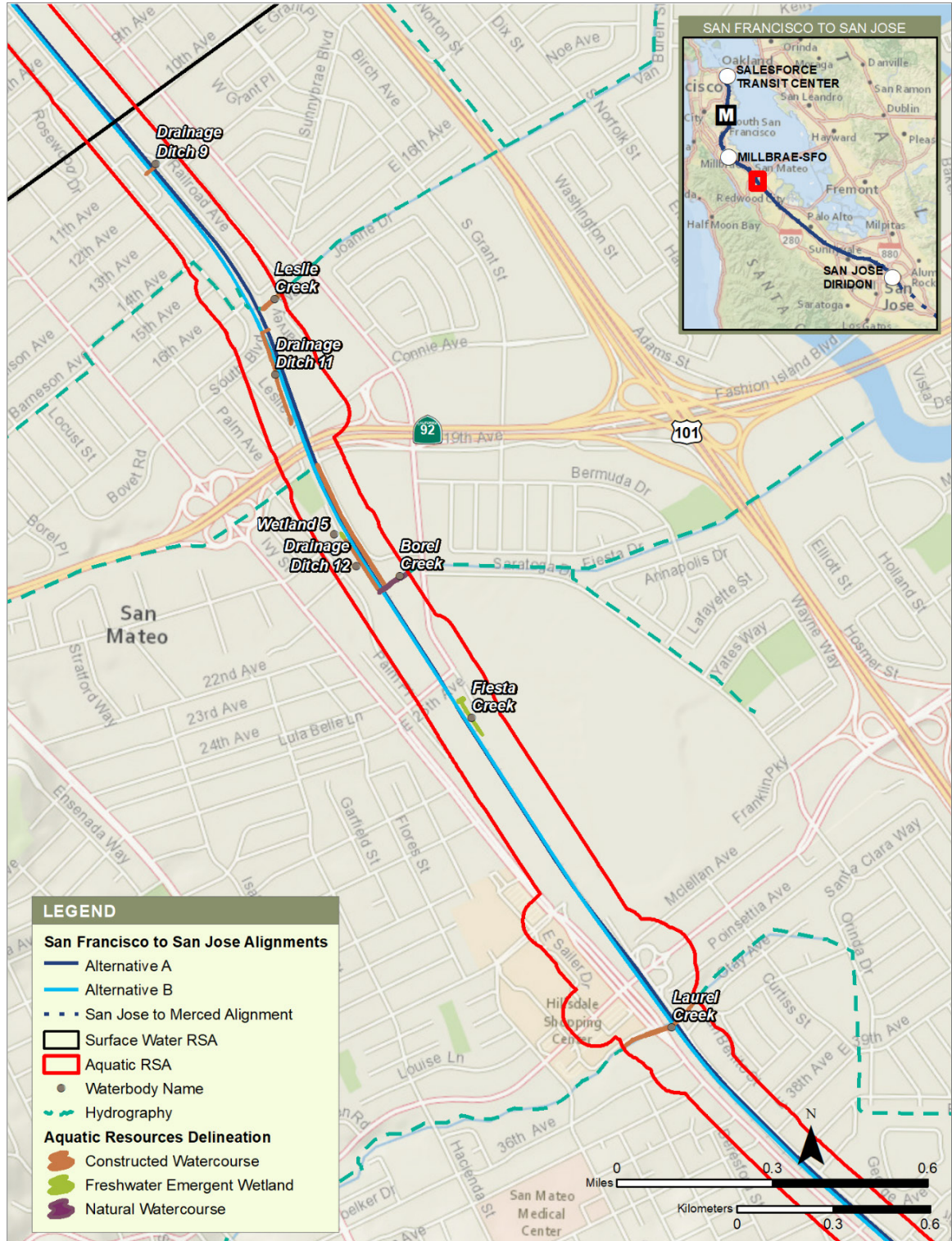
Sources: CAL FIRE 2013; Authority 2020c; CDFW 2016; USGS 2016; DataSF 2016; County of San Mateo Information Services 2016; SCWWD 2012; Oakland Museum of California 2005a-i, 2007a-l  
 MARCH 2020

**Figure 6 Aquatic Resources, San Bruno to San Mateo Subsection (Part 2 of 3)**



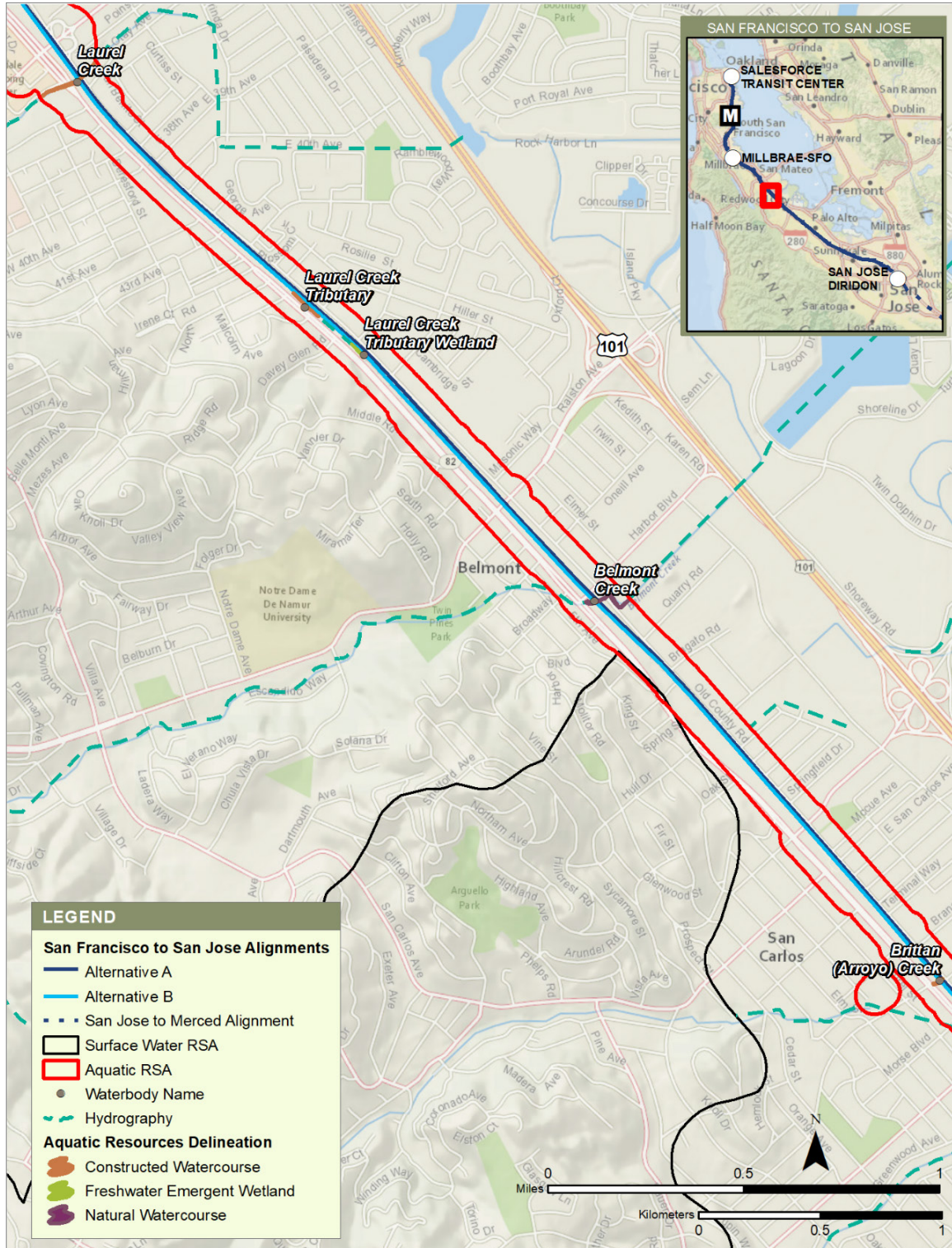
Sources: CAL FIRE 2013; Authority 2020c; CDFW 2016; USGS 2016; DataSF 2016; County of San Mateo Information Services 2016; SCVWD 2012; Oakland Museum of California 2005a-i, 2007a-l  
 MARCH 2020

**Figure 7 Aquatic Resources, San Bruno to San Mateo Subsection (Part 3 of 3)**



Sources: CAL FIRE 2013; Authority 2020d; CDFW 2016; USGS 2016; DataSF 2016; County of San Mateo Information Services 2016; SCVWD 2012; Oakland Museum of California 2005a-i, 2007a-l  
 MARCH 2020

**Figure 8 Aquatic Resources, San Mateo to Palo Alto Subsection (Part 1 of 6)**



Sources: CAL FIRE 2013; Authority 2020d; CDFW 2016; USGS 2016; DataSF 2016; County of San Mateo Information Services 2016; SCVWD 2012; Oakland Museum of California 2005a-i, 2007a-l  
MARCH 2020

**Figure 9 Aquatic Resources, San Mateo to Palo Alto Subsection (Part 2 of 6)**



Sources: CAL FIRE 2013; Authority 2020d; CDFW 2016; USGS 2016; DataSF 2016; County of San Mateo Information Services 2016; SCVWD 2012; Oakland Museum of California 2005a-i, 2007a-l  
 MARCH 2020

**Figure 10 Aquatic Resources, San Mateo to Palo Alto Subsection (Part 3 of 6)**



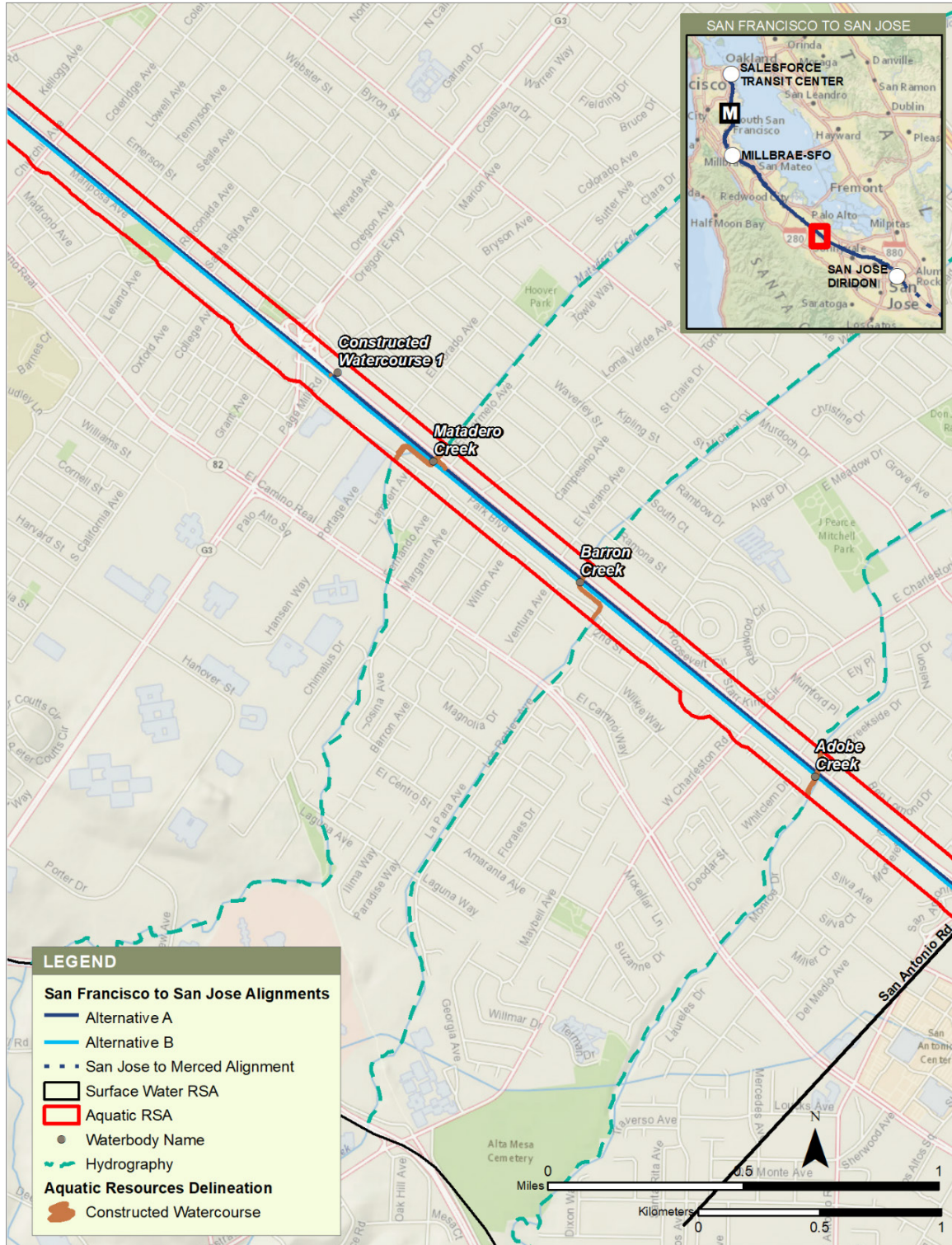
Sources: CAL FIRE 2013; Authority 2020d; CDFW 2016; USGS 2016; DataSF 2016; County of San Mateo Information Services 2016; SCVWD 2012; Oakland Museum of California 2005a-i, 2007a-l  
MARCH 2020

**Figure 11 Aquatic Resources, San Mateo to Palo Alto Subsection (Part 4 of 6)**



Sources: CAL FIRE 2013; Authority 2020d; CDFW 2016; USGS 2016; DataSF 2016; County of San Mateo Information Services 2016; SCVWD 2012; Oakland Museum of California 2005a-i, 2007a-l  
 MARCH 2020

**Figure 12 Aquatic Resources, San Mateo to Palo Alto Subsection (Part 5 of 6)**



Sources: CAL FIRE 2013; Authority 2020d; CDFW 2016; USGS 2016; DataSF 2016; County of San Mateo Information Services 2016; SCVWD 2012; Oakland Museum of California 2005a-i, 2007a-l  
MARCH 2020

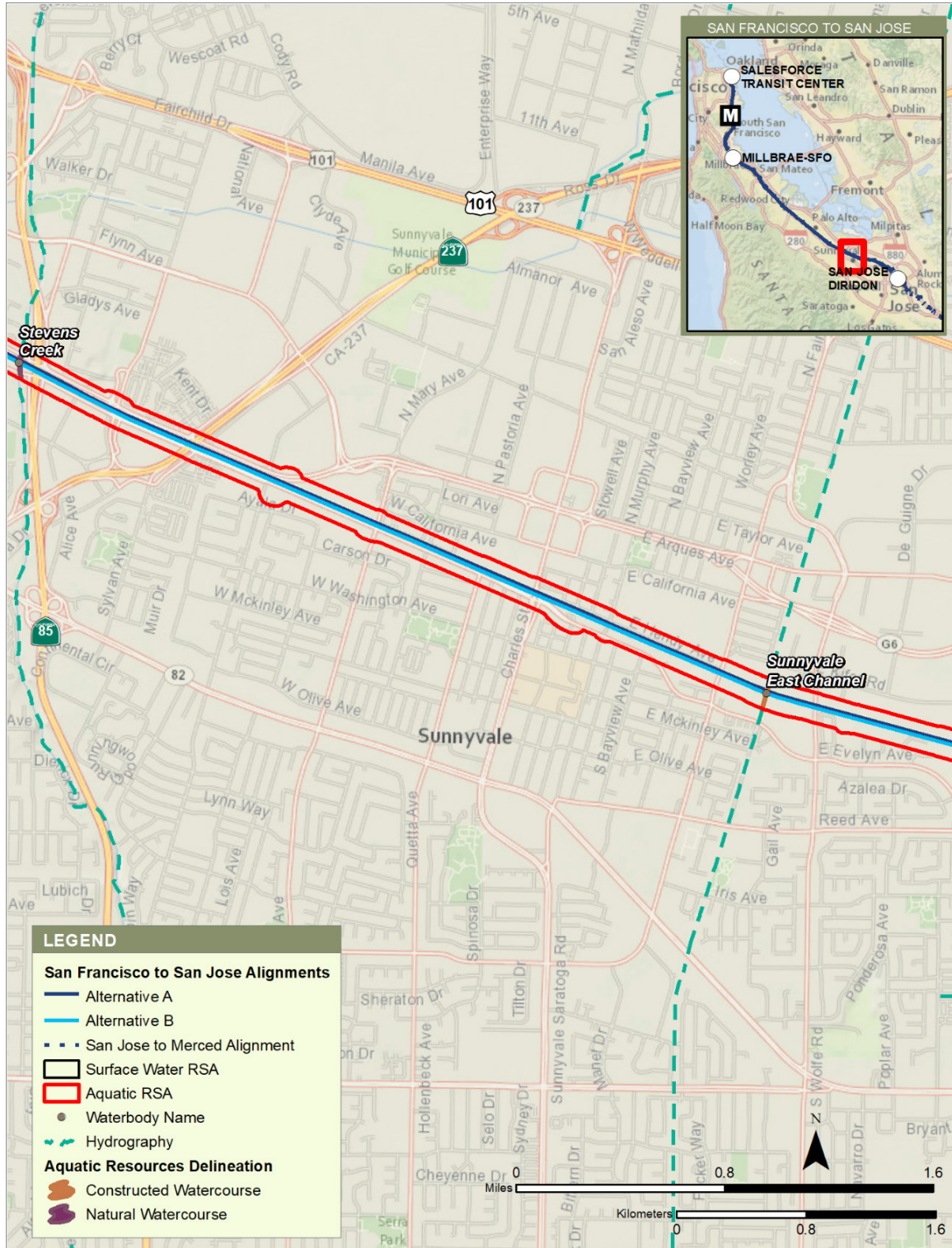
**Figure 13 Aquatic Resources, San Mateo to Palo Alto Subsection (Part 6 of 6)**





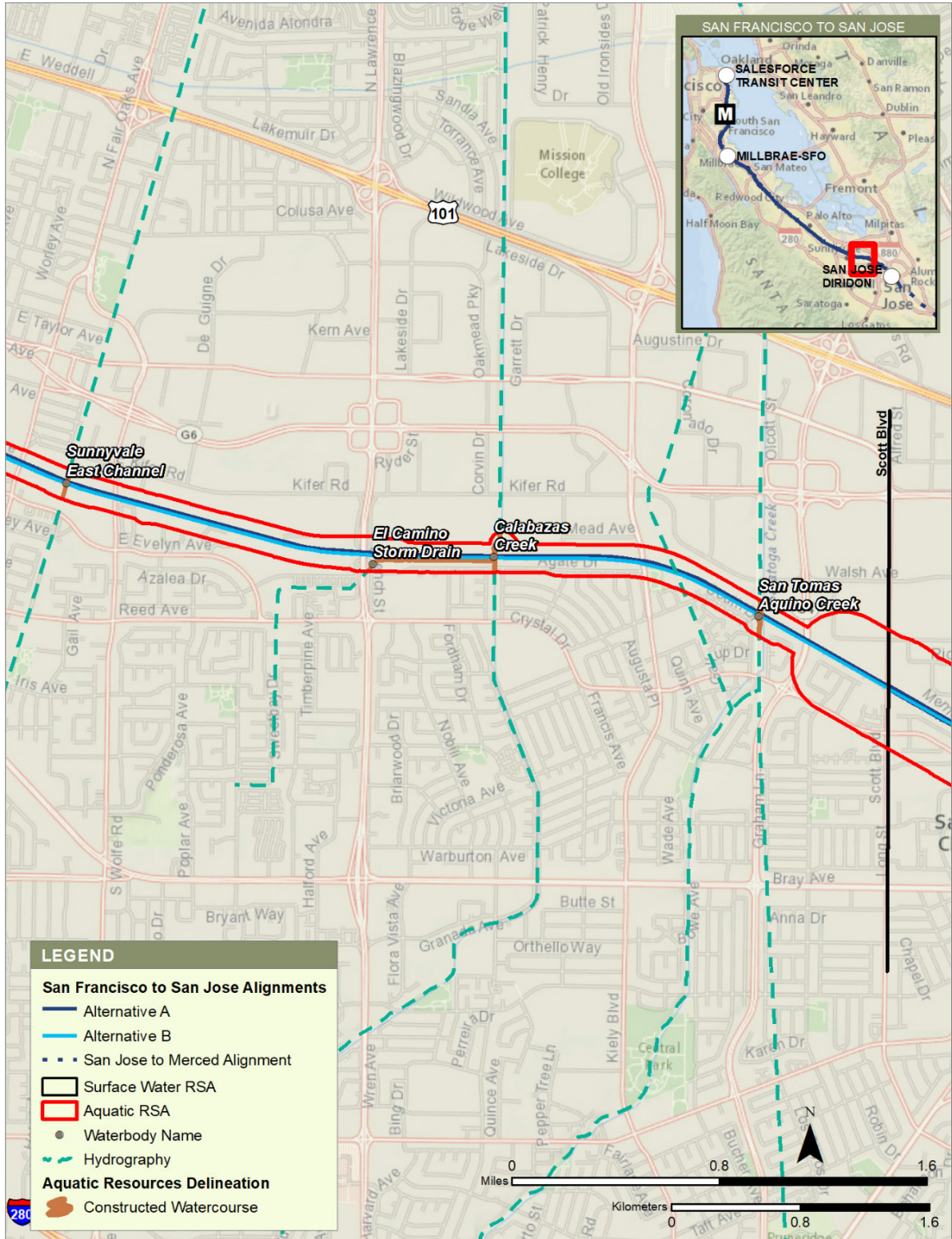
Sources: CAL FIRE 2013; Authority 2020d; CDFW 2016; USGS 2016; DataSF 2016; County of San Mateo Information Services 2016; SCVWD 2012; Oakland Museum of California 2005a-i, 2007a-l  
MARCH 2020

**Figure 14 Aquatic Resources, Mountain View to Santa Clara Subsection (Part 1 of 3)**



Sources: CAL FIRE 2013; Authority 2020d; CDFW 2016; USGS 2016; DataSF 2016; County of San Mateo Information Services 2016; SCVWD 2012; Oakland Museum of California 2005a-i, 2007a-l  
MARCH 2020

**Figure 15 Aquatic Resources, Mountain View to Santa Clara Subsection (Part 2 of 3)**



Sources: CAL FIRE 2013; Authority 2020d; CDFW 2016; USGS 2016; DataSF 2016; County of San Mateo Information Services 2016; SCVWD 2012; Oakland Museum of California 2005a-i, 2007a-l  
 MARCH 2020

**Figure 16 Aquatic Resources, Mountain View to Santa Clara Subsection (Part 3 of 3)**



Sources: CAL FIRE 2013; Authority 2020d; CDFW 2016; USGS 2016; DataSF 2016; County of San Mateo Information Services 2016; SCVWD 2012; Oakland Museum of California 2005a-i, 2007a-l  
 MARCH 2020

**Figure 17 Aquatic Resources, San Jose Diridon Station Approach Subsection (Part 1 of 2)**



Sources: CAL FIRE 2013; Authority 2020d; CDFW 2016; USGS 2016; DataSF 2016; County of San Mateo Information Services 2016; SCVWD 2012; Oakland Museum of California 2005a-i, 2007a-l  
MARCH 2020

**Figure 18 Aquatic Resources, San Jose Diridon Station Approach Subsection (Part 2 of 2)**

## References

- California Department of Fish and Wildlife (CDFW). 2016. California Streams GIS Data. [www.wildlife.ca.gov/Data/GIS/Clearinghouse](http://www.wildlife.ca.gov/Data/GIS/Clearinghouse) (accessed June 20, 2016).
- California Department of Forestry and Fire Protection (CAL FIRE). 2013. CalWater 2.2.1 Watershed Boundaries.
- California High-Speed Rail Authority (Authority). 2019a. *San Francisco to San Jose Project Section Record Preliminary Engineering for Project Definition*. April 2019.
- . 2019b. *San Jose to Merced Project Section Record Preliminary Engineering for Project Definition*. March 2020.
- . 2020a. *San Francisco to San Jose Project Section Hydrology and Water Resources Technical Report*. Prepared by WRECO. April 2020. Sacramento, CA.
- . 2020b. *San Jose to Merced Project Section Hydrology and Water Resources Technical Report*. Prepared by WRECO. March 2020. Sacramento, CA.
- . 2020c. *San Francisco to San Jose Project Section Aquatic Resources Delineation Technical Report*. Prepared by ICF. April 2020. Sacramento, CA.
- . 2020d. *San Jose to Merced Project Section Aquatic Resources Delineation Technical Report*. Prepared by ICF. March 2020. Sacramento, CA.
- County of San Mateo Information Services. 2016. Natural Features GIS Layers. <https://isd.smcgov.org/gis-data-download> (accessed October 15, 2018).
- DataSF. 2016. Water bodies GIS Layer, Water bodies in San Francisco. Derived from city features drawings from the Department of Public Works. Modified by the Department of Technology to show type of water body and name. <https://data.sfgov.org/Energy-and-Environment/Water-bodies/j829-i3ix> (accessed May 18, 2016).
- Oakland Museum of California. 2005a. *Mission Creek Watershed*. <http://explore.museumca.org/creeks/1640-RescMission.html> (accessed June 22, 2016).
- . 2005b. *Islais Creek Watershed*. <http://explore.museumca.org/creeks/1630-RescIslais.html> (accessed June 22, 2016).
- . 2005c. *Cordilleras Creek Watershed Map*. <http://explore.museumca.org/creeks/1490-OMCordilleras.html> (accessed June 23, 2016).
- . 2005d. *Redwood Creek Watershed Map*. <http://explore.museumca.org/creeks/1480-OMRedwood.html> (accessed June 23, 2016).
- . 2005e. *Atherton Channel Watershed Map*. <http://explore.museumca.org/creeks/1470-OMAtherton.html> (accessed June 23, 2016).
- . 2005f. *San Francisquito Creek Watershed Map: Lower Portion*. <http://explore.museumca.org/creeks/1460-OMSFrancisquitoLwr.html> (accessed June 23, 2016).
- . 2005g. *Matadero Creek Watershed Map*. <http://explore.museumca.org/creeks/1450-OMMatadero.html> (accessed June 23, 2016).
- . 2005h. *Adobe & Barron Creeks Watershed Map*. <http://explore.museumca.org/creeks/1440-OMAdobe.html> (accessed June 23, 2016).
- . 2005i. *Stevens & Permanente Creeks Watershed Map*. <http://explore.museumca.org/creeks/1420-OMStevensPermLwr.html> (accessed June 23, 2016).
- . 2007a. *Colma Creek Watershed*. <http://explore.museumca.org/creeks/1590-RescColma.html> (accessed July 27, 2016).

- . 2007b. *San Bruno Creek Watershed*. <http://explore.museumca.org/creeks/1580-RescSBruno.html> (accessed June 23, 2016).
- . 2007c. *Green Hills Creek Watershed*. <http://explore.museumca.org/creeks/1575-RescGreenHills.html> (accessed June 23, 2016).
- . 2007d. *Millbrae Creek Watershed*. <http://explore.museumca.org/creeks/1570-RescMilbrae.html> (accessed June 23, 2016).
- . 2007e. *Mills Creek Watershed*. <http://explore.museumca.org/creeks/1560-RescMills.html> (accessed June 23, 2016).
- . 2007f. *Easton Creek Watershed*. <http://explore.museumca.org/creeks/1550-RescEaston.html> (accessed June 23, 2016).
- . 2007g. *Sanchez Creek Watershed*. <http://explore.museumca.org/creeks/1540-RescSanchez.html> (accessed June 23, 2016).
- . 2007h. *Burlingame Creek Watershed*. <http://explore.museumca.org/creeks/1530-RescCherry.html> (accessed June 23, 2016).
- . 2007i. *San Mateo Creek Watershed*. <http://explore.museumca.org/creeks/1520-RescSMateo.html> (accessed June 23, 2016).
- . 2007j. *Seal Slough Watershed*. <http://explore.museumca.org/creeks/1510-RescSeal.html> (accessed June 23, 2016).
- . 2007k. *Belmont Creek Watershed*. <http://explore.museumca.org/creeks/1500-RescBelmont.html> (accessed June 23, 2016).
- . 2007l. *Cordilleras Creek Watershed Map*. <http://explore.museumca.org/creeks/1490-OMCordilleras.html> (accessed June 23, 2016).
- Santa Clara Valley Water District (SCVWD). 2012. *Watching Our Watersheds Interactive Map Layers*, Western Santa Clara County. [www.valleywater.org/WOW.aspx](http://www.valleywater.org/WOW.aspx) (accessed May 11, 2016).
- U.S. Geological Survey (USGS). 2016. *The National Map Viewer*. <https://viewer.nationalmap.gov/advanced-viewer/> (accessed October 20, 2016).