

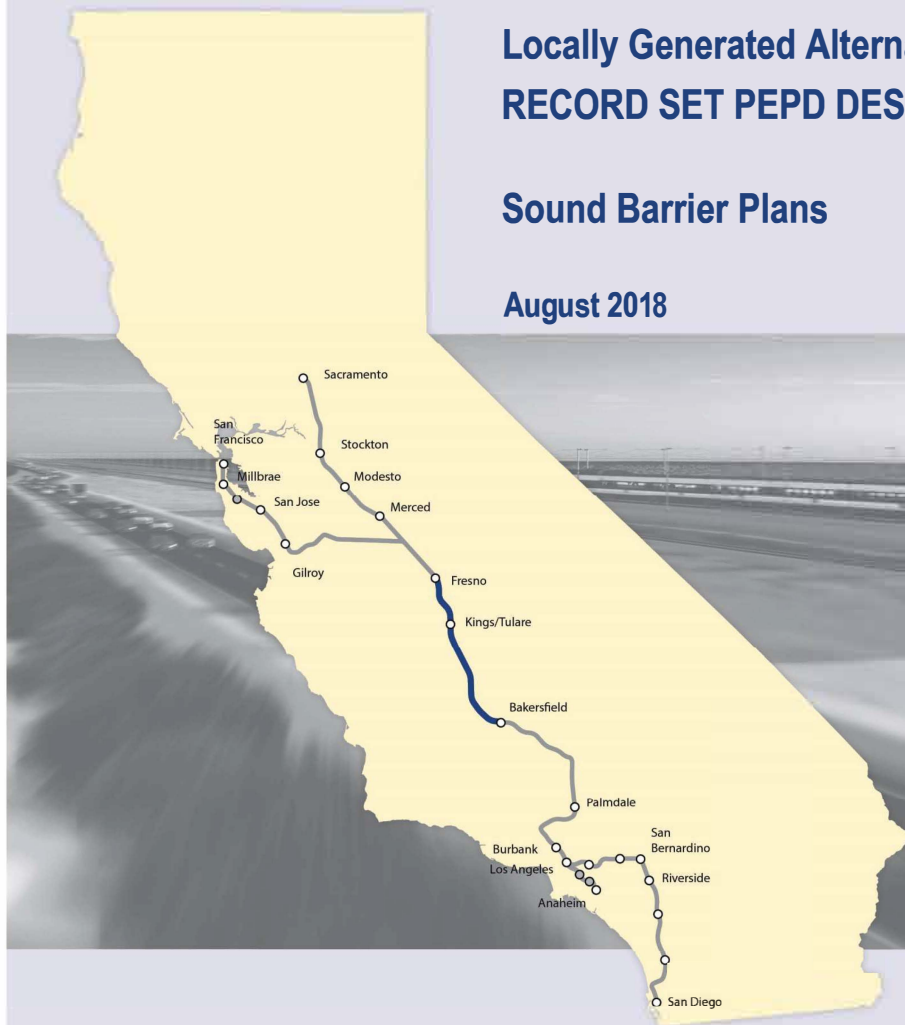
California High-Speed Rail Authority

Fresno to Bakersfield Section

Locally Generated Alternative
RECORD SET PEPD DESIGN SUBMISSION

Sound Barrier Plans

August 2018



DRAWING NO.	REV. NO.	DRAWING DESCRIPTION
II-00001		TRACK GUIDEWAY
II-00002		INDEX OF DRAWINGS
II-00003		GENERAL -- GENERAL NOTES
II-00004		GENERAL -- ABBREVIATIONS AND SYMBOLS SHEET 1
II-00005		GENERAL -- ABBREVIATIONS AND SYMBOLS SHEET 2
II-00006		TRACK GUIDEWAY -- KEY MAP SHEET 1
II-00007		TRACK GUIDEWAY -- KEY MAP SHEET 2
II-00008		TRACK GUIDEWAY -- HORIZONTAL ALIGNMENT DATA TABLE
II-00009		TRACK GUIDEWAY -- TYPICAL SECTIONS SHEET 1
II-00010		TRACK GUIDEWAY -- TYPICAL SECTIONS SHEET 2
II-00011		TRACK GUIDEWAY -- TYPICAL SECTIONS SHEET 3
II-00012		TRACK GUIDEWAY -- TYPICAL SECTIONS SHEET 4
II-00013		TRACK GUIDEWAY -- TYPICAL SECTIONS SHEET 5
II-00014		TRACK GUIDEWAY -- TYPICAL SECTIONS SHEET 6
II-00015		TRACK GUIDEWAY -- TYPICAL SECTIONS SHEET 7
II-00016		TRACK GUIDEWAY -- TYPICAL SECTIONS SHEET 8
II-00017		TRACK GUIDEWAY -- TYPICAL SECTIONS SHEET 9
II-00018		TRACK GUIDEWAY -- TYPICAL SECTIONS SHEET 10
II-00019		TRACK GUIDEWAY -- TYPICAL SECTIONS SHEET 11
II-00020		TRACK GUIDEWAY -- TYPICAL SECTIONS SHEET 12
II-00021		TRACK GUIDEWAY -- TYPICAL SECTIONS SHEET 13
II-00022		TRACK GUIDEWAY -- TYPICAL SECTIONS SHEET 14
II-01001		TRACK GUIDEWAY -- STA 5880+00 TO 5990+00 -- PLAN AND PROFILE
II-01002		TRACK GUIDEWAY -- STA 5990+00 TO 5918+00 -- PLAN AND PROFILE
II-01003		TRACK GUIDEWAY -- STA 5918+00 TO 5946+00 -- PLAN AND PROFILE
II-01004		TRACK GUIDEWAY -- STA 5946+00 TO 5974+00 -- PLAN AND PROFILE
II-01005		TRACK GUIDEWAY -- STA 5974+00 TO 6002+00 -- PLAN AND PROFILE
II-01006		TRACK GUIDEWAY -- STA 6002+00 TO 6030+00 -- PLAN AND PROFILE
II-01007		TRACK GUIDEWAY -- STA 6030+00 TO 6058+00 -- PLAN AND PROFILE
II-01008		TRACK GUIDEWAY -- STA 6058+00 TO 6086+00 -- PLAN AND PROFILE
II-01009		TRACK GUIDEWAY -- STA 6086+00 TO 6114+00 -- PLAN AND PROFILE
II-01010		TRACK GUIDEWAY -- STA 6114+00 TO 6142+00 -- PLAN AND PROFILE
II-01011		TRACK GUIDEWAY -- STA 6142+00 TO 6170+00 -- PLAN AND PROFILE
II-01012		TRACK GUIDEWAY -- STA 6170+00 TO 6198+00 -- PLAN AND PROFILE
II-01013		TRACK GUIDEWAY -- STA 6198+00 TO 6226+00 -- PLAN AND PROFILE
II-01014		TRACK GUIDEWAY -- STA 6226+00 TO 6254+00 -- PLAN AND PROFILE
II-01015		TRACK GUIDEWAY -- STA 6254+00 TO 6282+00 -- PLAN AND PROFILE
II-01016		TRACK GUIDEWAY -- STA 6282+00 TO 6310+00 -- PLAN AND PROFILE
II-01017		TRACK GUIDEWAY -- STA 6310+00 TO 6338+00 -- PLAN AND PROFILE
II-01018		TRACK GUIDEWAY -- STA 6338+00 TO 6366+00 -- PLAN AND PROFILE
II-01019		TRACK GUIDEWAY -- STA 6366+00 TO 6394+00 -- PLAN AND PROFILE
II-01020		TRACK GUIDEWAY -- STA 6394+00 TO 6422+00 -- PLAN AND PROFILE
II-01021		TRACK GUIDEWAY -- STA 6422+00 TO 6450+00 -- PLAN AND PROFILE
II-01022		TRACK GUIDEWAY -- STA 6450+00 TO 6478+00 -- PLAN AND PROFILE
II-01023		TRACK GUIDEWAY -- STA 6478+00 TO 6506+00 -- PLAN AND PROFILE
II-01024		TRACK GUIDEWAY -- STA 6506+00 TO 6534+00 -- PLAN AND PROFILE
II-01025		TRACK GUIDEWAY -- STA 6534+00 TO 6562+00 -- PLAN AND PROFILE
II-01026		TRACK GUIDEWAY -- STA 6562+00 TO 6590+00 -- PLAN AND PROFILE
II-01027		TRACK GUIDEWAY -- STA 6590+00 TO 6618+00 -- PLAN AND PROFILE
II-01028		TRACK GUIDEWAY -- STA 6618+00 TO 6646+00 -- PLAN AND PROFILE
II-01029		TRACK GUIDEWAY -- STA 6646+00 TO 6674+00 -- PLAN AND PROFILE
II-01030		TRACK GUIDEWAY -- STA 6674+00 TO 6702+00 -- PLAN AND PROFILE
II-01031		TRACK GUIDEWAY -- STA 6702+00 TO 6730+00 -- PLAN AND PROFILE
II-01032		TRACK GUIDEWAY -- STA 6730+00 TO 6758+00 -- PLAN AND PROFILE
II-01033		TRACK GUIDEWAY -- STA 6758+00 TO 6786+00 -- PLAN AND PROFILE
II-01034		TRACK GUIDEWAY -- STA 6786+00 TO 6814+00 -- PLAN AND PROFILE
II-01035		TRACK GUIDEWAY -- STA 6814+00 TO 6828+00 -- PLAN AND PROFILE

DRAWING NO.	REV. NO.	DRAWING DESCRIPTION
II-01036		TRACK GUIDEWAY -- STA 6828+00 TO 6842+00 -- PLAN AND PROFILE
II-01037		TRACK GUIDEWAY -- STA 6842+00 TO 6856+00 -- PLAN AND PROFILE
II-01038		TRACK GUIDEWAY -- STA 6856+00 TO 6870+00 -- PLAN AND PROFILE
II-01039		TRACK GUIDEWAY -- STA 6870+00 TO 6884+00 -- PLAN AND PROFILE
II-01040		TRACK GUIDEWAY -- STA 6884+00 TO 6912+00 -- PLAN AND PROFILE
II-01041		TRACK GUIDEWAY -- STA 6912+00 TO 6940+00 -- PLAN AND PROFILE
II-01042		TRACK GUIDEWAY -- STA 6940+00 TO 6968+00 -- PLAN AND PROFILE
II-01043		TRACK GUIDEWAY -- STA 6968+00 TO 6996+00 -- PLAN AND PROFILE
II-01044		TRACK GUIDEWAY -- STA 6996+00 TO 7024+00 -- PLAN AND PROFILE
II-01045		TRACK GUIDEWAY -- STA 7024+00 TO 7052+00 -- PLAN AND PROFILE
II-01046		TRACK GUIDEWAY -- STA 7052+00 TO 7080+00 -- PLAN AND PROFILE
II-01047		TRACK GUIDEWAY -- STA 7080+00 TO 7108+00 -- PLAN AND PROFILE
II-01048		TRACK GUIDEWAY -- STA 7108+00 TO 7136+00 -- PLAN AND PROFILE
II-01049		TRACK GUIDEWAY -- STA 7136+00 TO 7164+00 -- PLAN AND PROFILE
II-01050		TRACK GUIDEWAY -- STA 7164+00 TO 7192+00 -- PLAN AND PROFILE
II-01051		TRACK GUIDEWAY -- STATION NB STORAGE TRACK -- PLAN AND PROFILE
II-01052		TRACK GUIDEWAY -- STATION SB STORAGE TRACK -- PLAN AND PROFILE
II-01053		BNSF PLAN -- STA 1002+00 TO STA 1033+00
II-01054		BNSF PLAN -- STA 1033+00 TO STA 1063+00
II-01055		BNSF PLAN -- STA 1063+00 TO STA 1094+00
II-01056		BNSF TOR PROFILE -- STA 865+00 TO STA 916+00 -- SHEET 1
II-01057		BNSF TOR PROFILE -- STA 916+00 TO STA 972+00 -- SHEET 2
II-01058		BNSF TOR PROFILE -- STA 972+00 TO STA 1028+00 -- SHEET 3
II-01059		BNSF TOR PROFILE -- STA 1028+00 TO STA 1084+00 -- SHEET 4
II-01060		BNSF TOR PROFILE -- STA 1084+00 TO STA 1122+00 -- SHEET 5

REV	DATE	BY	CHK	APP	DESCRIPTION

DESIGNED BY
J. TREJO

CHECKED BY
N. OLINO

IN CHARGE
E. WINTERS

IN CHARGE
P. PLENTON

DATE
10/28/2016

TYL INTERNATIONAL



CALIFORNIA
HIGH-SPEED RAIL AUTHORITY

CALIFORNIA HIGH-SPEED RAIL PROJECT
FRESNO TO BAKERSFIELD
LOCALLY GENERATED ALTERNATIVE
INDEX OF DRAWINGS

CONTRACT NO.
HSR13-44

DRAWING NO.
II-B0001

SCALE
NO SCALE

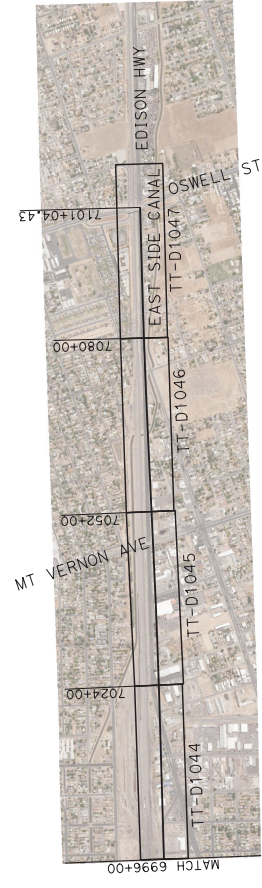
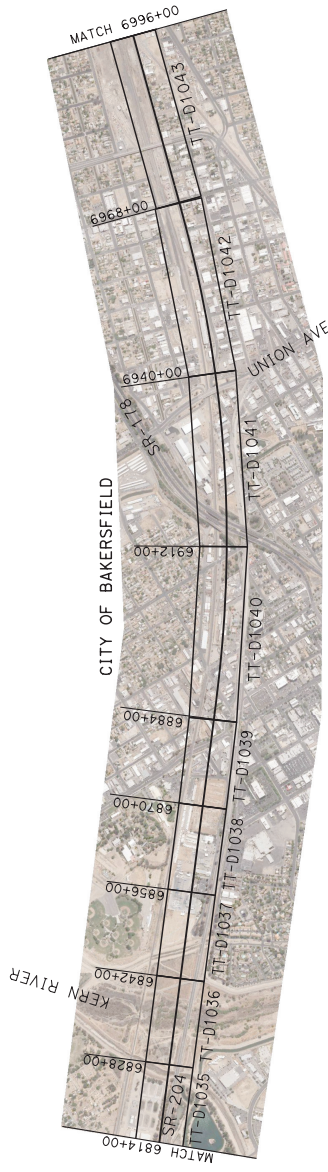
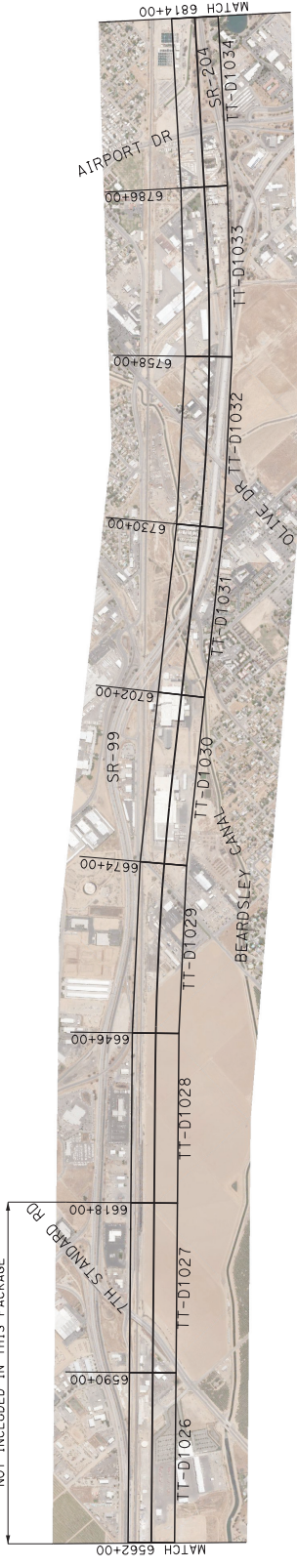
SHEET NO.
NO SCALE



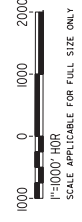
DRAWING NUMBERS ARE CONSISTENT WITH THE 15% RECORD SET PACKAGE. ONLY RELEVANT DRAWINGS ARE INCLUDED IN THIS SOUND BARRIER PACKAGE.

DESIGNED BY J. TREJO	PROJECT NO. 12/21/2018/2159348 PM	CONTRACT NO. HSR13-44
CHECKED BY E. WINTERS	DRAWING NO. TT-B0005	DRAWING NO. TT-B0005
IN CHARGE P. PIENTON	SCALE AS SHOWN	SCALE AS SHOWN
DATE 10/28/2016	DATE	SHEET NO.
DESCRIPTION	FILE	DATE
	BY	DATE
	CHK	DATE
	APP	DATE
TYL INTERNATIONAL		
RECORD SET PPD DESIGN SUBMISSION		
CALIFORNIA HIGH-SPEED RAIL PROJECT FRESNO TO BAKERSFIELD LOCALLY GENERATED ALTERNATIVE TRACK GUIDEWAY KEY MAP SHEET 1		

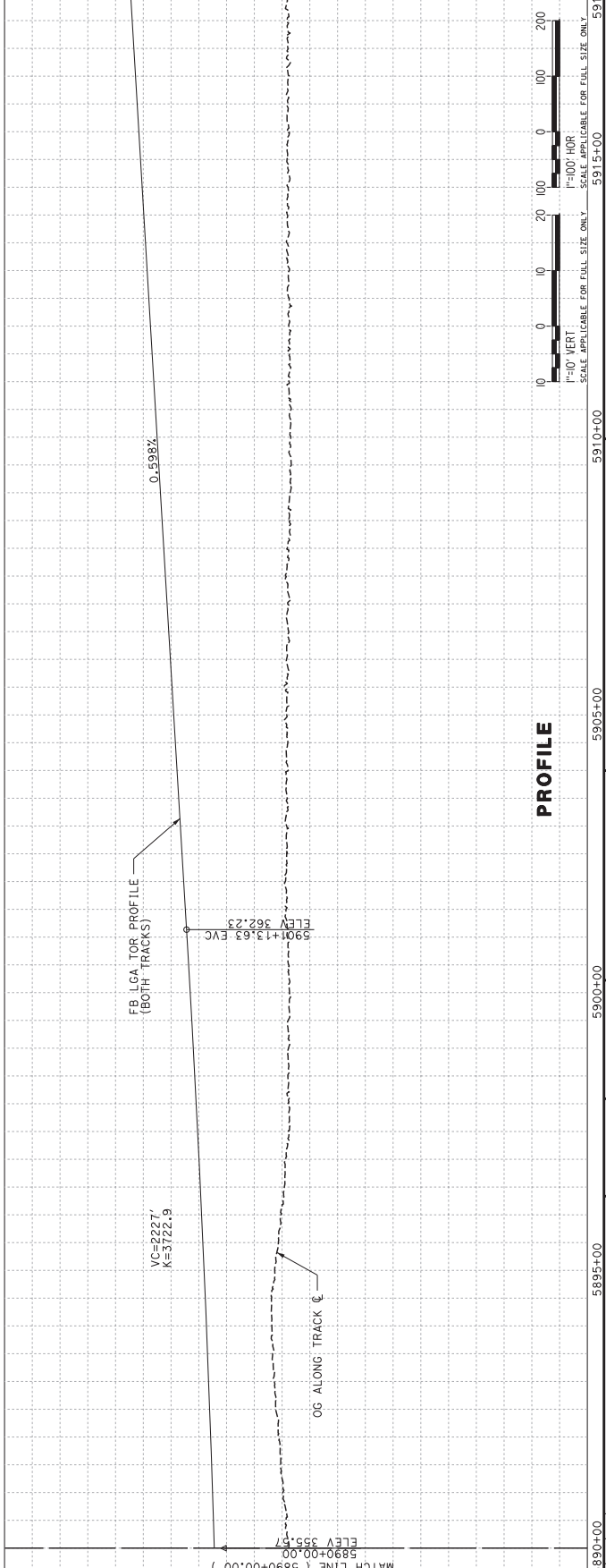
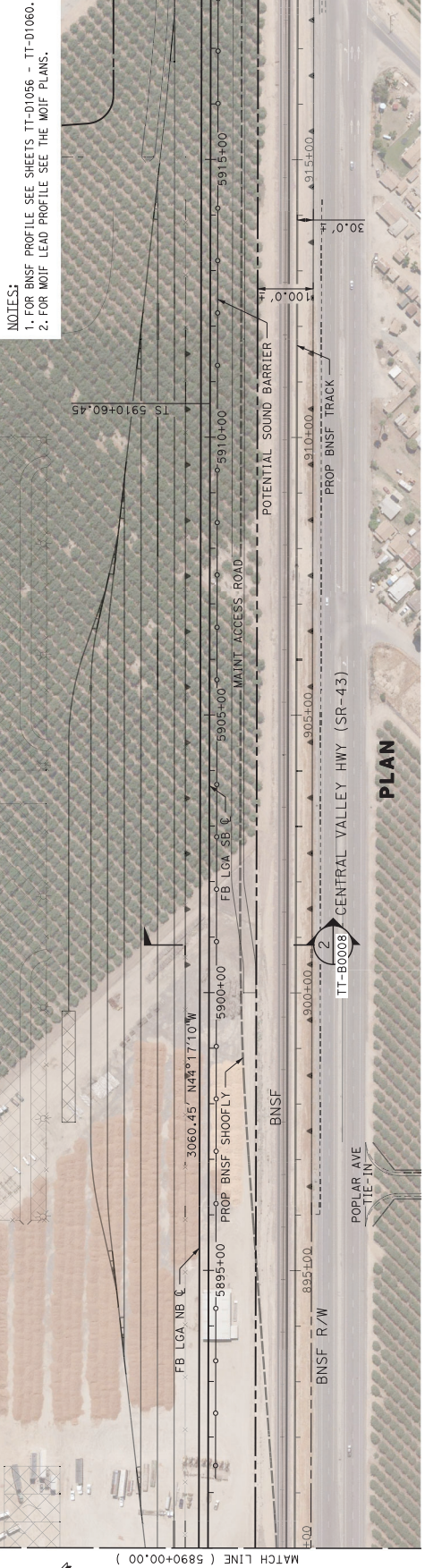
NOT INCLUDED IN THIS PACKAGE



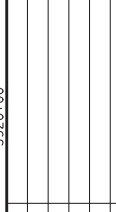
DRAWING NUMBERS ARE CONSISTENT WITH THE 15% RECORD SET PACKAGE. ONLY RELEVANT DRAWINGS ARE INCLUDED IN THIS SOUND BARRIER PACKAGE.



DESIGNED BY J. TREJO	PROJECT NO. 12/21/2018/259146 PM	CALIFORNIA HIGH-SPEED RAIL PROJECT FRESNO TO BAKERSFIELD LOCALLY GENERATED ALTERNATIVE TRACK GUIDEWAY KEY MAP SHEET 2	CONTRACT NO. HSR13-44
CHECKED BY E. WINTERS	DRAWING NO. TT-B0006		SCALE AS SHOWN
IN CHARGE P. PIENTON	DATE 10/28/2016		SHEET NO.
DESCRIPTION	 CALIFORNIA <small>HIGH-SPEED RAIL AUTHORITY</small>		



DESIGNED BY J. TREJO	CHECKED BY T. WILKINSON	DATE 10/28/2016
DESIGNED BY E. WINTERS	CHECKED BY P. PIENTON	DATE 10/28/2016
RECORD SET PERIOD DESIGN SUBMISSION		
CALIFORNIA HIGH-SPEED RAIL PROJECT FRESNO TO BAKERSFIELD LOCALLY GENERATED ALTERNATIVE TRACK GUIDEWAY STA 5890+00 TO 5918+00 PROPOSED SOUND BARRIER		
CONTRACT NO. HSR13-44		
DRAWING NO. TT-D1002		
SCALE AS SHOWN		
SHEET NO. AS SHOWN		

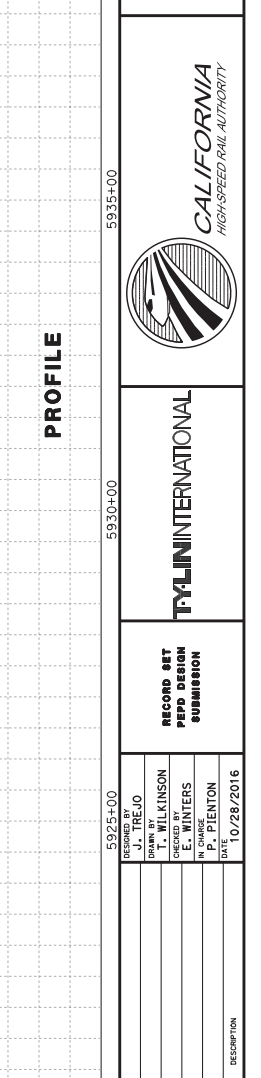
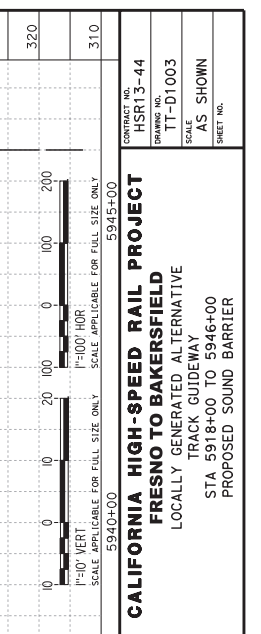


RECORD SET
 RECORD DESIGN
 SUBMISSION

TYP INTERNATIONAL

DESIGNED BY J. TREJO
 DRAWN BY T. WILKINSON
 CHECKED BY E. WINTERS
 IN CHARGE P. PIENTON
 DATE 10/28/2016

REV	DATE	BY	CHK	APP	DESCRIPTION



SCALE APPLICABLE FOR FULL SIZE ONLY
 1"=10' VERT
 SCALE APPLICABLE FOR FULL SIZE ONLY
 1"=100' HOR

STATION 5918+00 5920+00 5925+00 5930+00 5935+00 5940+00 5945+00 5946+00

MATCH LINE (5918+00.00)
 MATCH LINE (5946+00.00)

MATCH LINE (5918+00.00)
 MATCH LINE (5946+00.00)

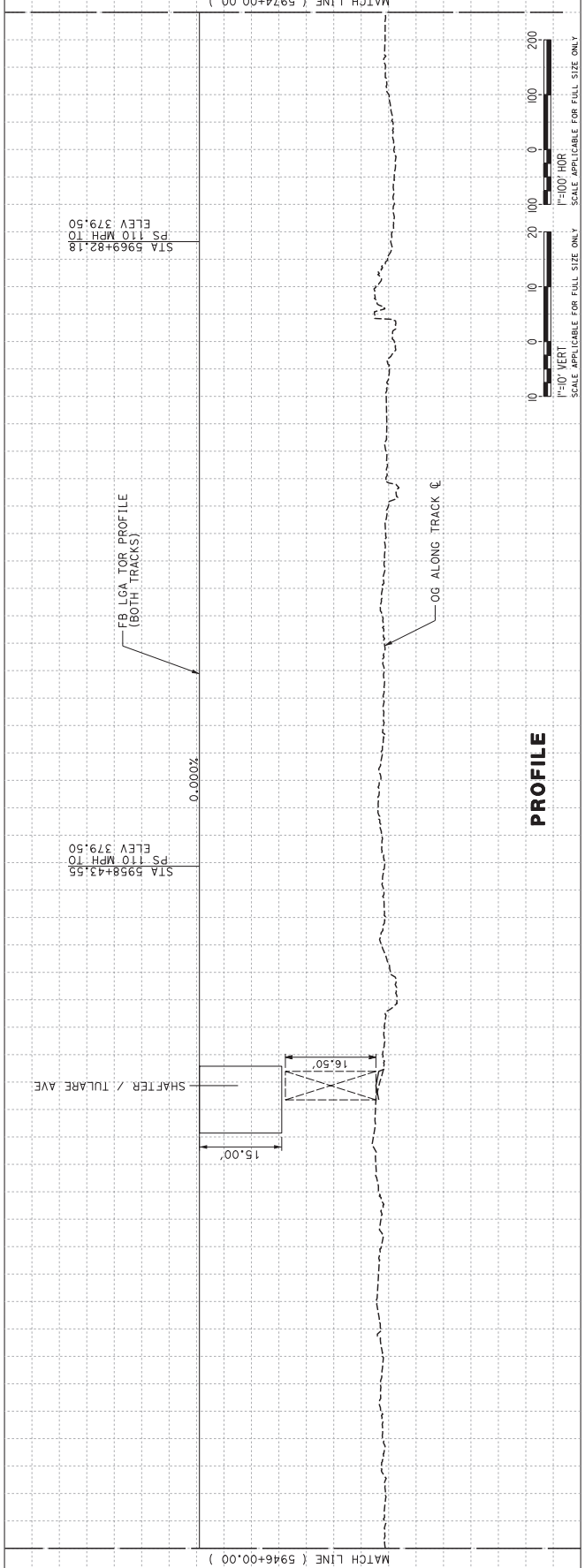
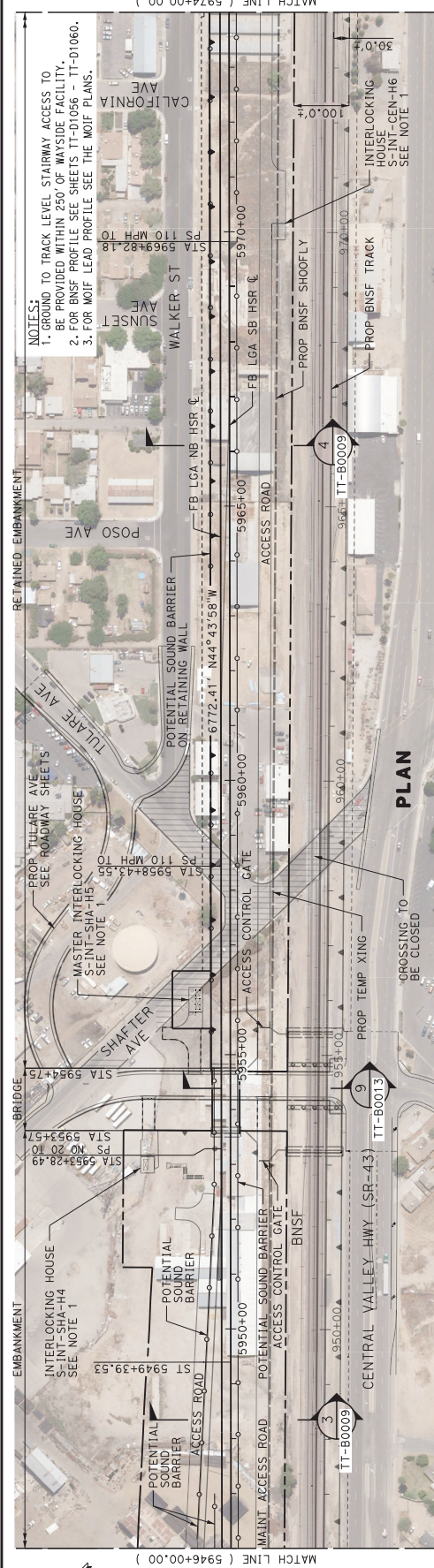
PLAN
 PROFILE

PLAN
 PROFILE

PLAN
 PROFILE

PLAN
 PROFILE

NOTES:
 1. GROUND TO TRACK LEVEL STAIRWAY ACCESS TO BE PROVIDED WITHIN 250' OF WAYSIDE FACILITY.
 2. FOR BNSF PROFILE SEE SHEET'S TT-D1056 - TT-D1060.
 3. FOR MOIF LEAD PROFILE SEE THE MOIF PLANS.



SCALE APPLICABLE FOR FULL SIZE ONLY
 1"=100' VERT
 1"=100' HOR
 SCALE APPLICABLE FOR FULL SIZE ONLY

STATION 310
 5946+00
 5950+00
 5955+00
 5960+00
 5965+00
 5970+00
 5974+00

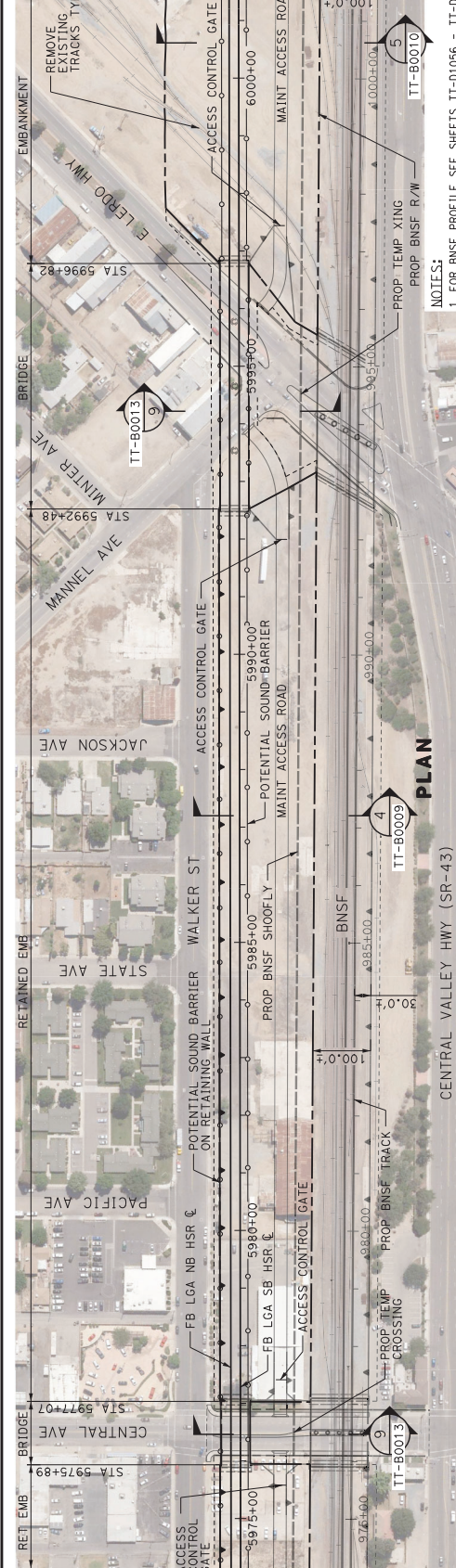
CONTRACT NO. HSR13-44
 DRAWING NO. TT-D1004
 SCALE AS SHOWN
 SHEET NO.

CALIFORNIA HIGH-SPEED RAIL PROJECT
FRESNO TO BAKERSFIELD
 LOCALLY GENERATED ALTERNATIVE
 TRACK GUIDEWAY
 STA 5946+00 TO 5974+00
 PROPOSED SOUND BARRIER

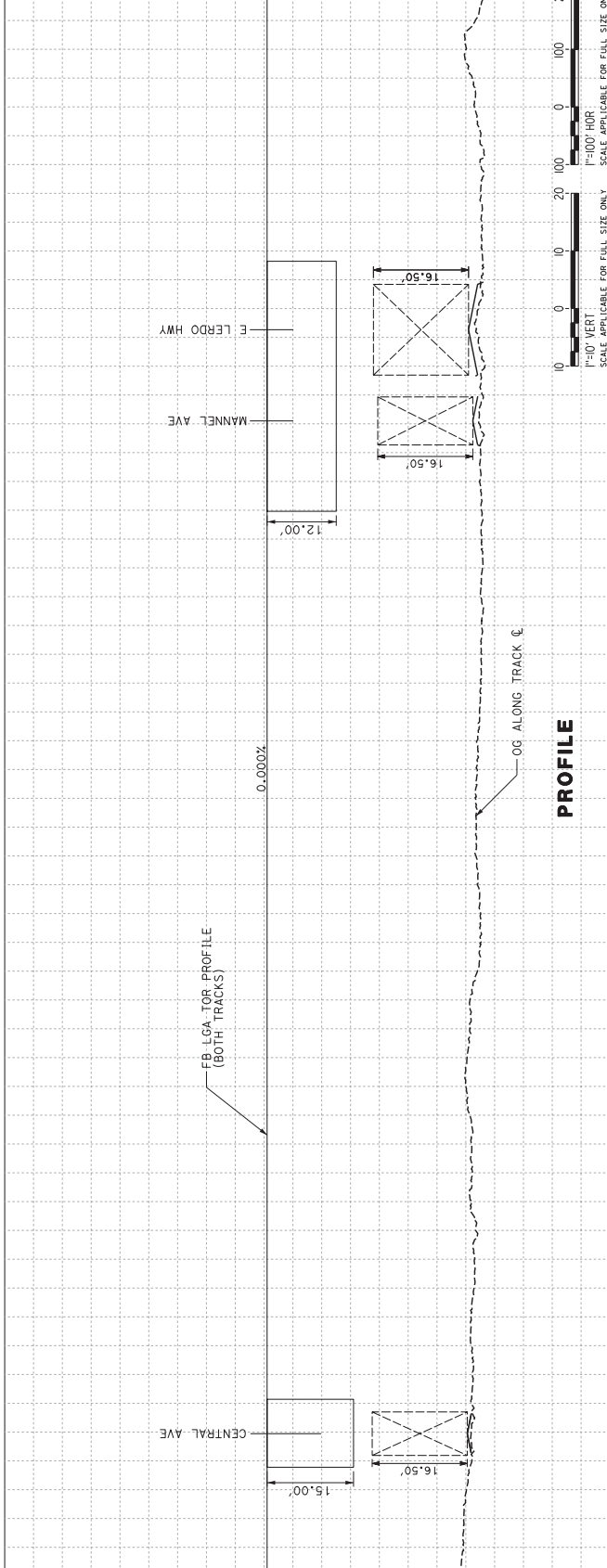
TYL INTERNATIONAL

DESIGNED BY J. TREJO
 CHECKED BY T. WILKINSON
 DESIGNED BY E. WINTERS
 IN CHARGE P. PIENION
 DATE 10/28/2016

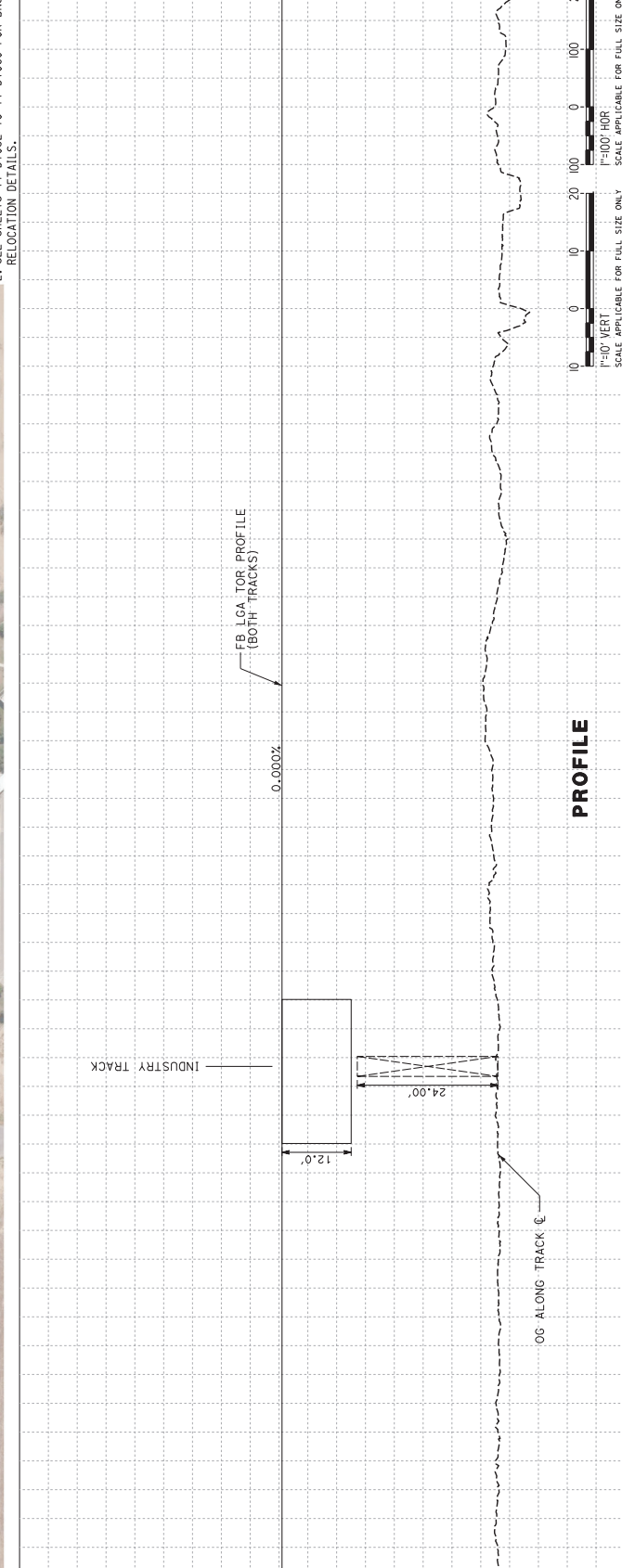
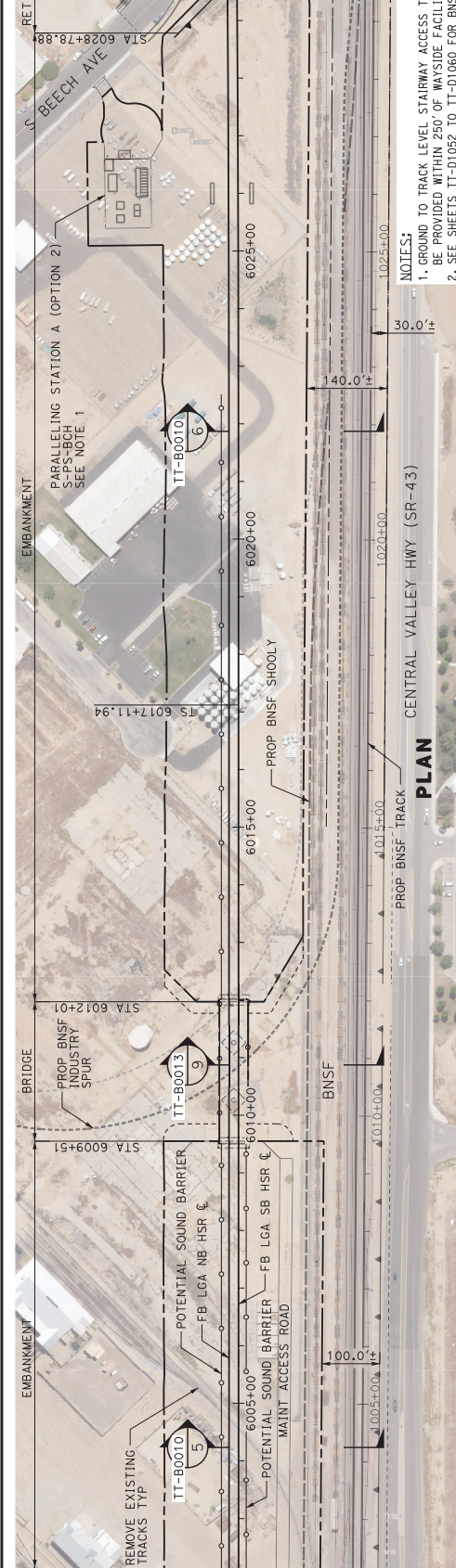
REV	DATE	BY	CHK	APP	DESCRIPTION



NOTES:
1. FOR BNSF PROFILE SEE SHEETS TT-D1056 - TT-D1060.



STATION	5975+00	5980+00	5985+00	5995+00	6000+00
CONTRACT NO.	HSR13-44				
DRAWING NO.	TT-D1005				
SCALE	AS SHOWN				
SHEET NO.	AS SHOWN				
CALIFORNIA HIGH-SPEED RAIL PROJECT FRESNO TO BAKERSFIELD LOCALLY GENERATED ALTERNATIVE TRACK GUIDEWAY STA 5974+00 TO 6002+00 PROPOSED SOUND BARRIER					
TYL INTERNATIONAL					
RECORD SET PEPD DESIGN SUBMISSION					
DESIGNED BY	J. TREJO				
CHECKED BY	T. WILKINSON				
IN CHARGE	E. WINTERS				
DATE	10/28/2016				
REV	DATE	BY	CHK	APP	DESCRIPTION



STATION	6002+00	6005+00	6010+00	6015+00	6020+00	6030+00
420						
410						
400						
390						
380						
370						
360						
350						
340						
330						
320						

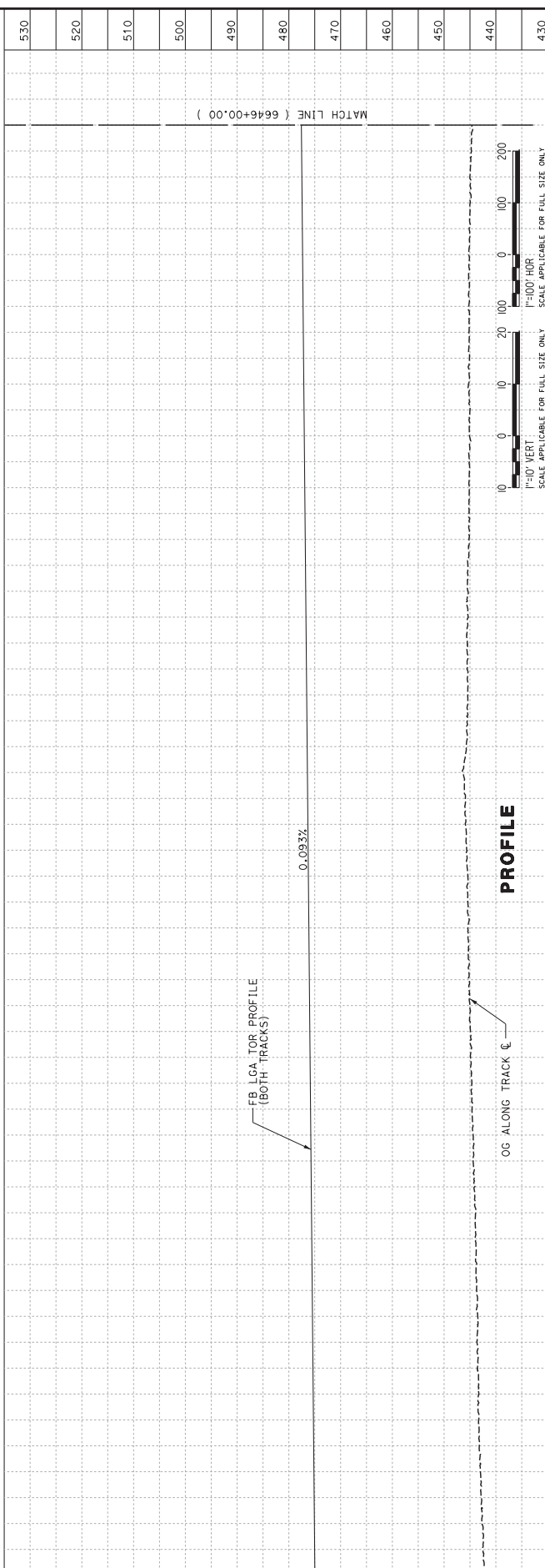
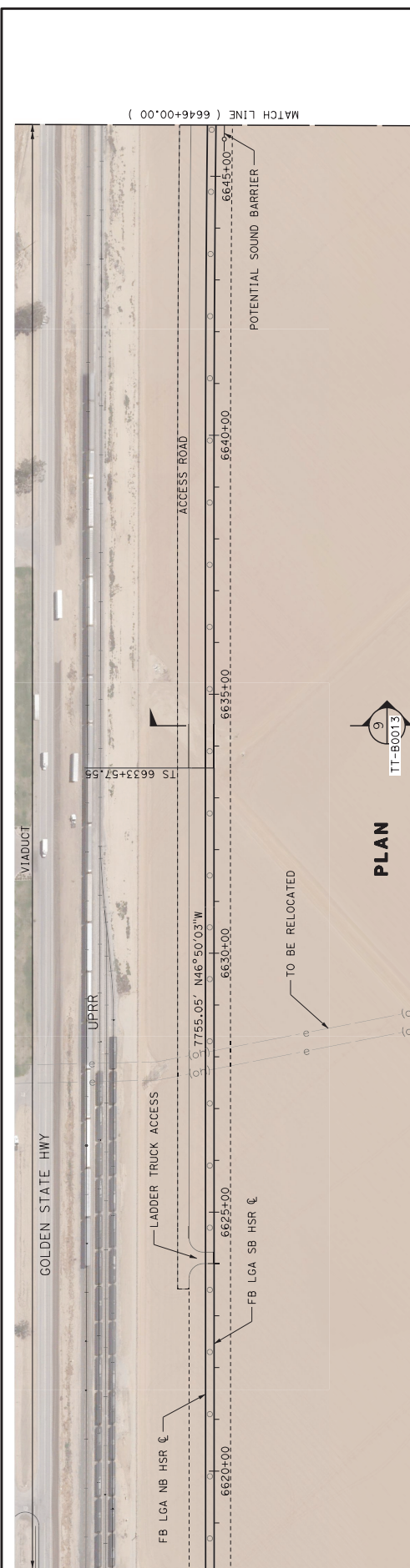
DESIGNED BY: J. TREJO
 CHECKED BY: T. WILKINSON
 IN CHARGE: E. WINTERS
 DATE: 10/28/2016

**RECORD SET
 PERIOD DESIGN
 SUBMISSION**

CONTRACT NO. HSR13-44
 DRAWING NO. TT-D1006
 SCALE AS SHOWN
 SHEET NO.

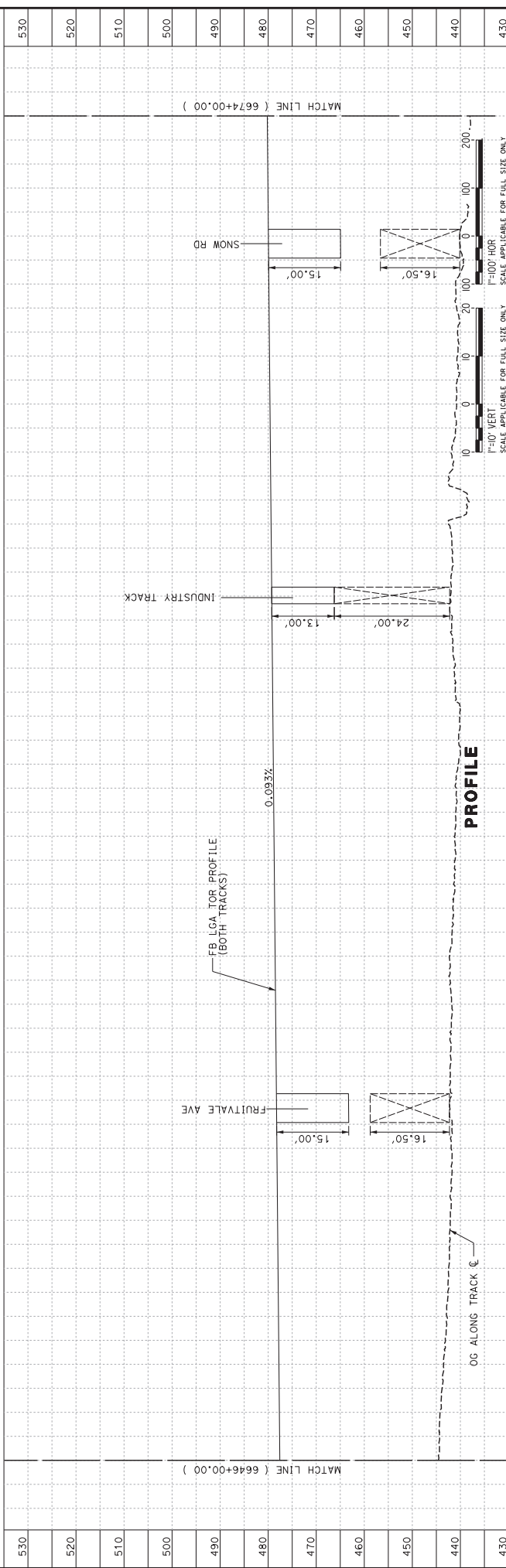
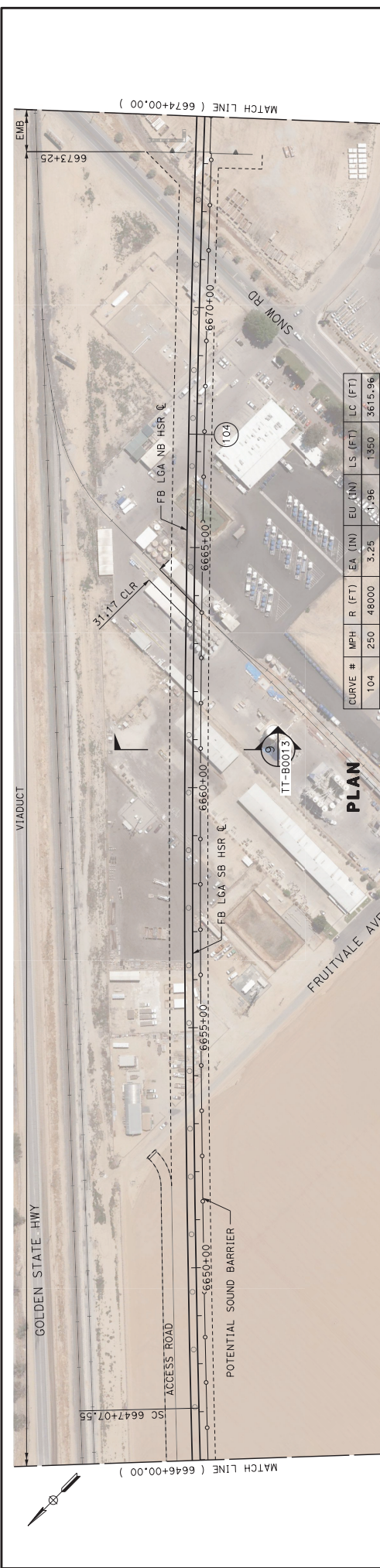
CALIFORNIA HIGH-SPEED RAIL PROJECT
FRESNO TO BAKERSFIELD
 LOCALLY GENERATED ALTERNATIVE
 TRACK GUIDEWAY
 STA 6002+00 TO 6030+00
 PROPOSED SOUND BARRIER

TYL INTERNATIONAL
 HIGH-SPEED RAIL AUTHORITY

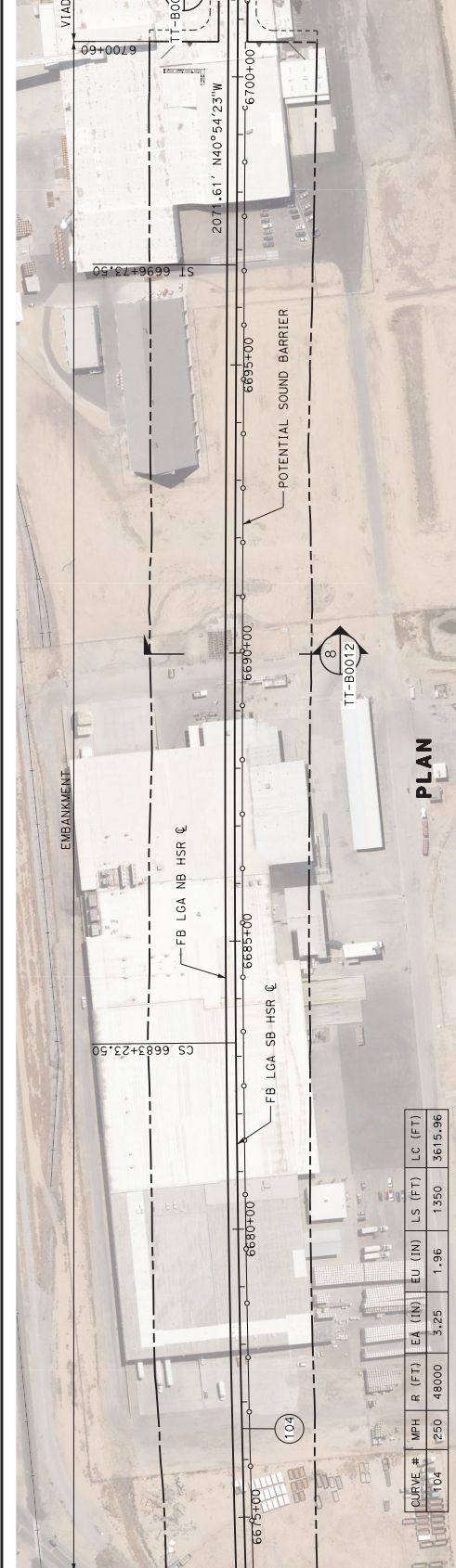


STATION	6618+00	6620+00	6625+00	6630+00	6635+00	6640+00	6645+00
DESIGNED BY	J. TREJO						
CHECKED BY	T. WILKINSON						
IN CHARGE	E. WINTERS						
DATE	10/28/2016						
BY	BN	BN	APP				
DESCRIPTION							
RECORD SET PER DESIGN SUBMISSION							
CALIFORNIA HIGH-SPEED RAIL AUTHORITY							
CALIFORNIA HIGH-SPEED RAIL PROJECT FRESNO TO BAKERSFIELD LOCALLY GENERATED ALTERNATIVE TRACK GUIDEWAY STA 6618+00 TO 6646+00 PROPOSED SOUND BARRIER							
CONTRACT NO. HSR13-44 DRAWING NO. TT-D1028 SCALE AS SHOWN SHEET NO.							

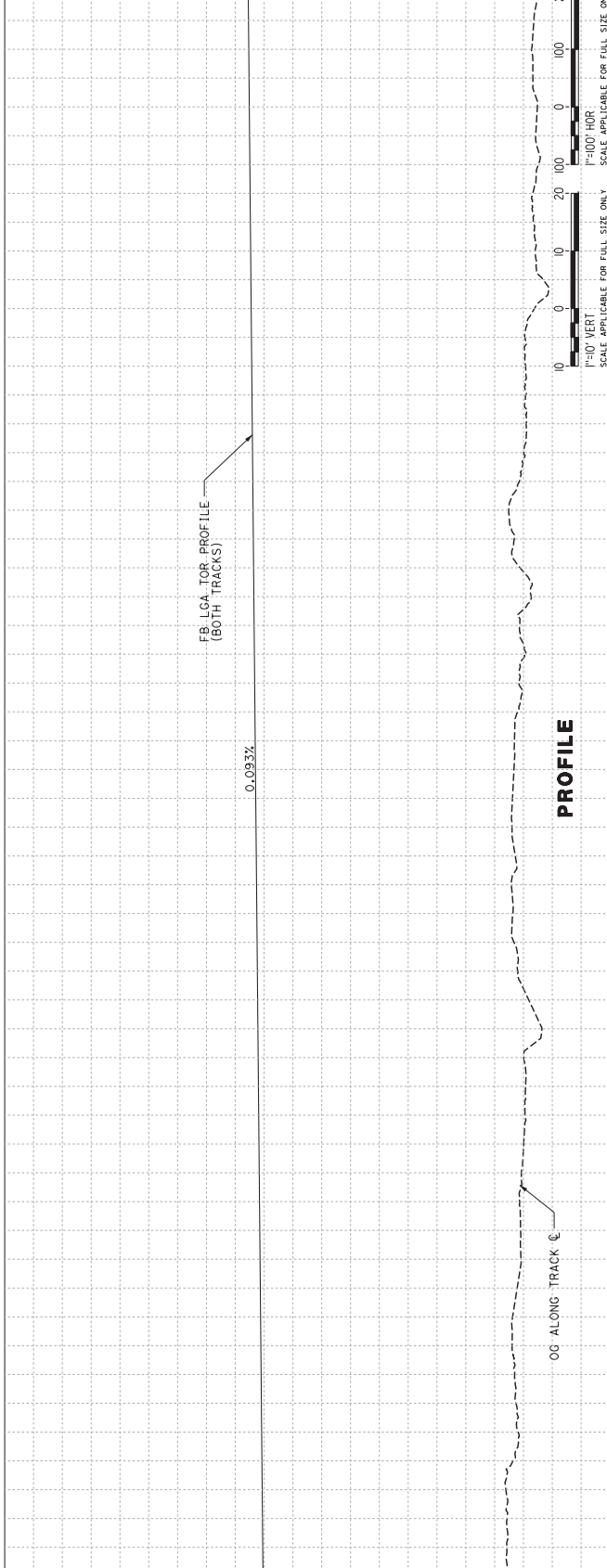
T:\[proj] 12/21/2016 10:05 PM #FTRBLS #FTRBLS #FTRBLS
 Projects\701206.N.BF55\00 CAD\Sheet Files\Sound Barriers\BF5A-TT-D1028.dgn



STATION	6646+00	6650+00	6655+00	6660+00	6665+00	6670+00	6674+00
CONTRACT NO.	HSR13-44						
DRAWING NO.	TT-D1029						
SCALE	AS SHOWN						
SHEET NO.	AS SHOWN						
DESIGNED BY	J. TREJO						
CHECKED BY	T. WILKINSON						
IN CHARGE	E. WINTERS						
DATE	10/28/2016						
BY	ENK	APP					
DATE							
DESCRIPTION							
CALIFORNIA HIGH-SPEED RAIL PROJECT FRESNO TO BAKERSFIELD LOCALLY GENERATED ALTERNATIVE TRACK GUIDEWAY STA 6646+00 TO 6674+00 PROPOSED SOUND BARRIER							



CURVE #	MPH	R (FT)	EA (IN)	EU (IN)	LS (FT)	LC (FT)
104	250	48000	3.25	1.96	1350	3615.96



CALIFORNIA HIGH-SPEED RAIL PROJECT
FRESNO TO BAKERSFIELD
 LOCALLY GENERATED ALTERNATIVE
 TRACK GUIDEWAY
 STA 6674+00 TO 6702+00
 PROPOSED SOUND BARRIER

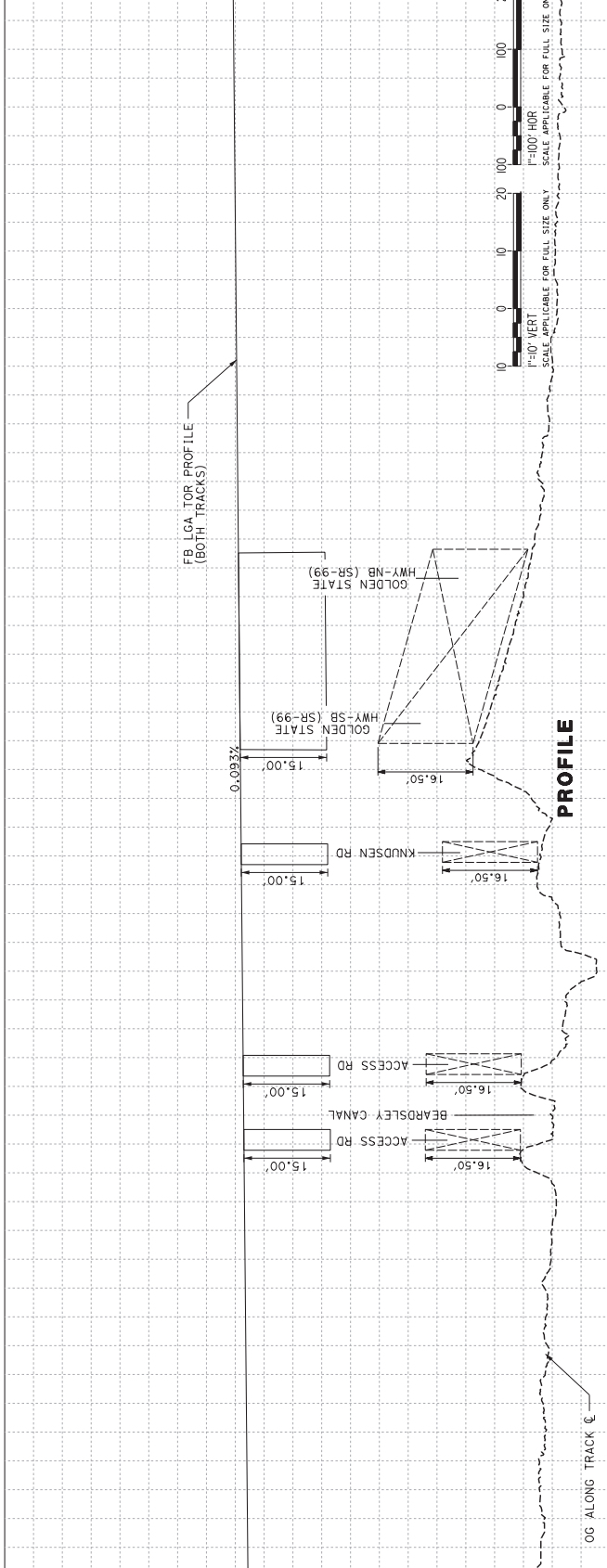
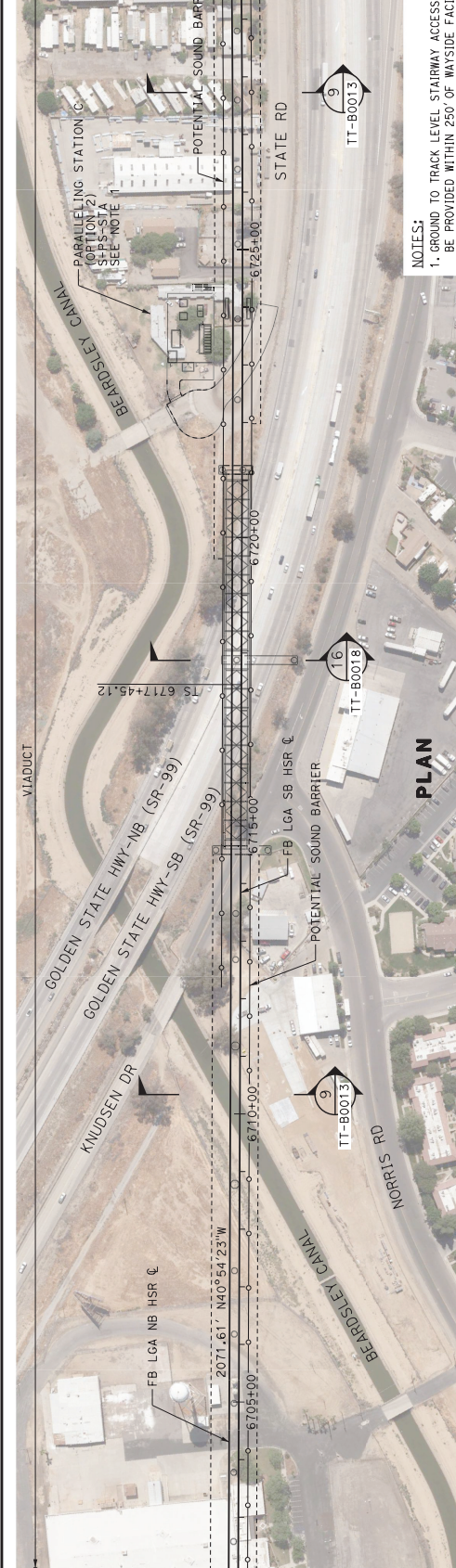
TYL INTERNATIONAL
 RECORD SET
 P&P DESIGN
 SUBMISSION

DESIGNED BY: J. TREJO
 CHECKED BY: N. OLINO
 IN CHARGE: E. WINTERS
 DATE: 10/28/2016

CONTRACT NO. HSR13-44
 DRAWING NO. TT-D1030
 SCALE AS SHOWN
 SHEET NO.

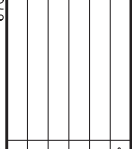
STATION	6675+00	6680+00	6685+00	6690+00	6695+00	6700+00	6702+00
520							
510							
500							
490							
480							
470							
460							
450							
440							
430							
420							

REV	DATE	BY	CHK	APP	DESCRIPTION

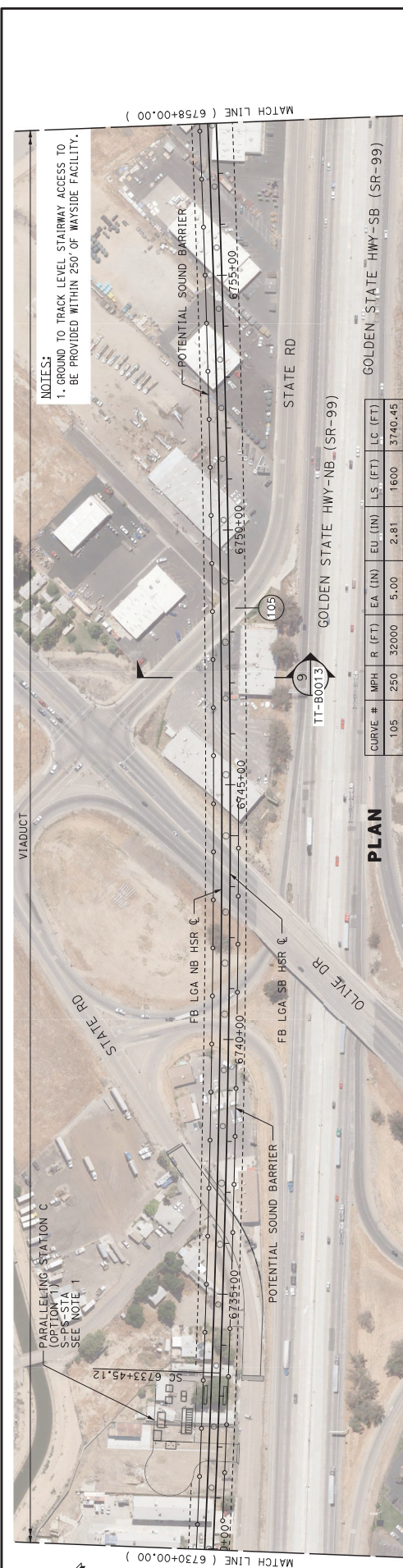


STATION	6702+00	6705+00	6710+00	6715+00	6720+00	6730+00
DESIGNED BY	J. TREJO					
CHECKED BY	N. OLINO					
IN CHARGE	E. WINTERS					
DATE	10/28/2016					
DESCRIPTION						
CONTRACT NO.	HSR13-44					
DRAWING NO.	TT-D1031					
SCALE	AS SHOWN					
SHEET NO.	AS SHOWN					

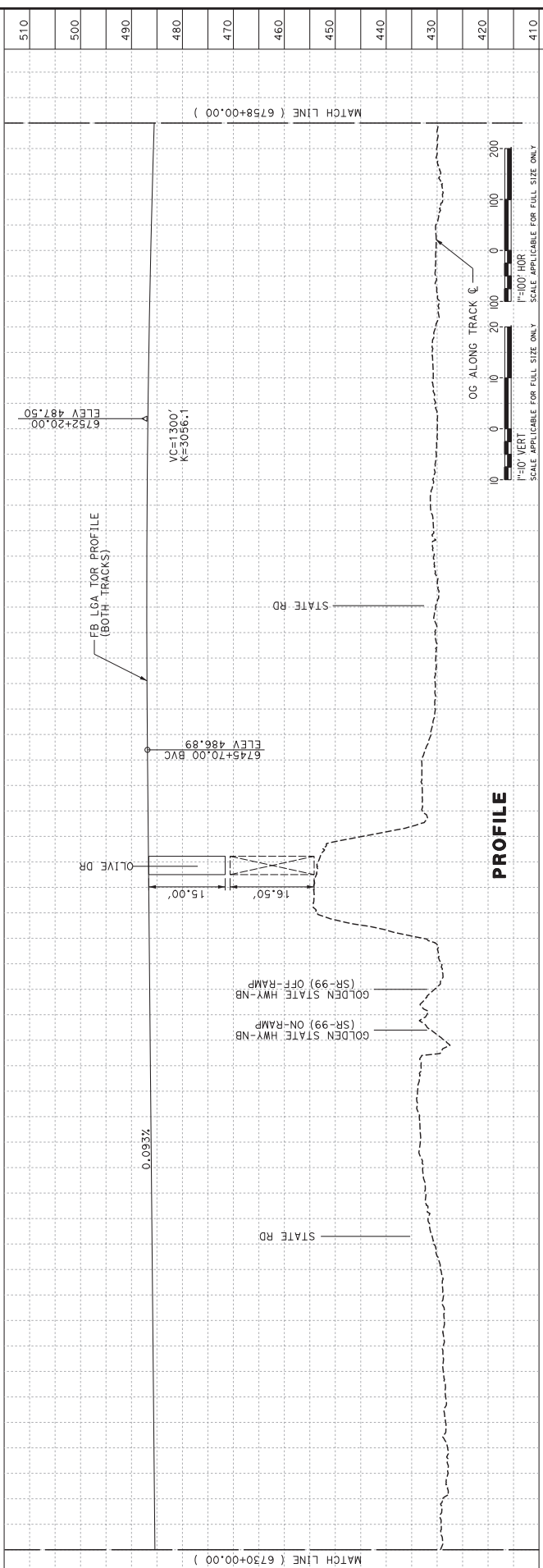
**RECORD SET
PREP DESIGN
SUBMISSION**



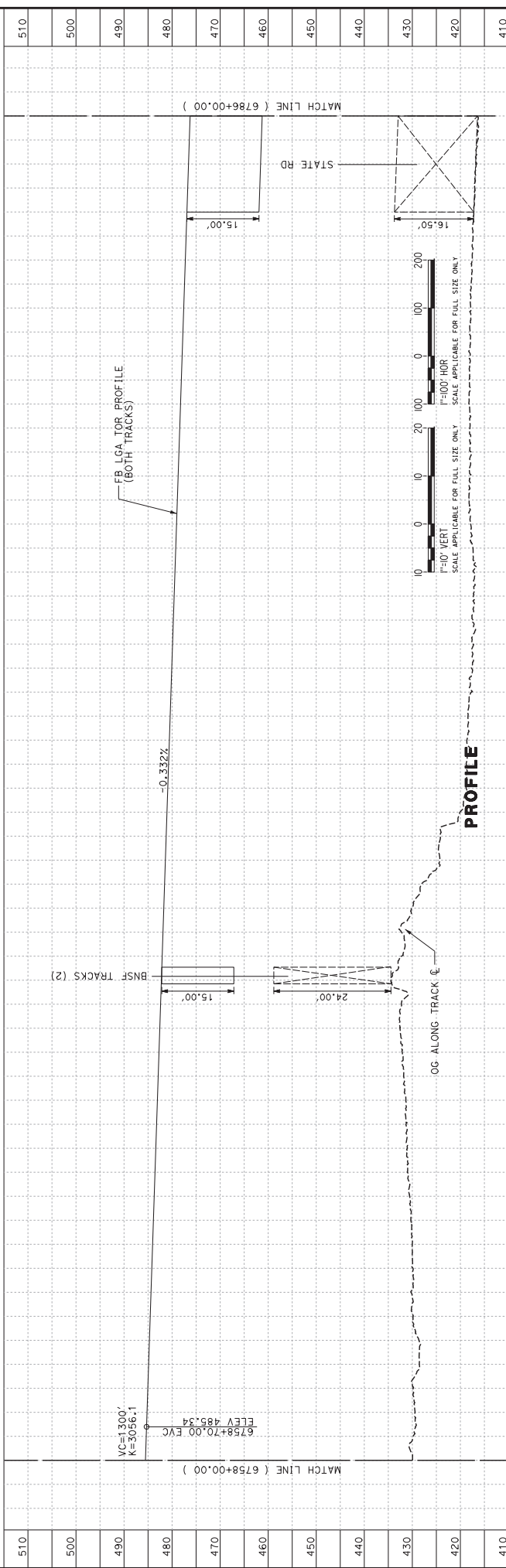
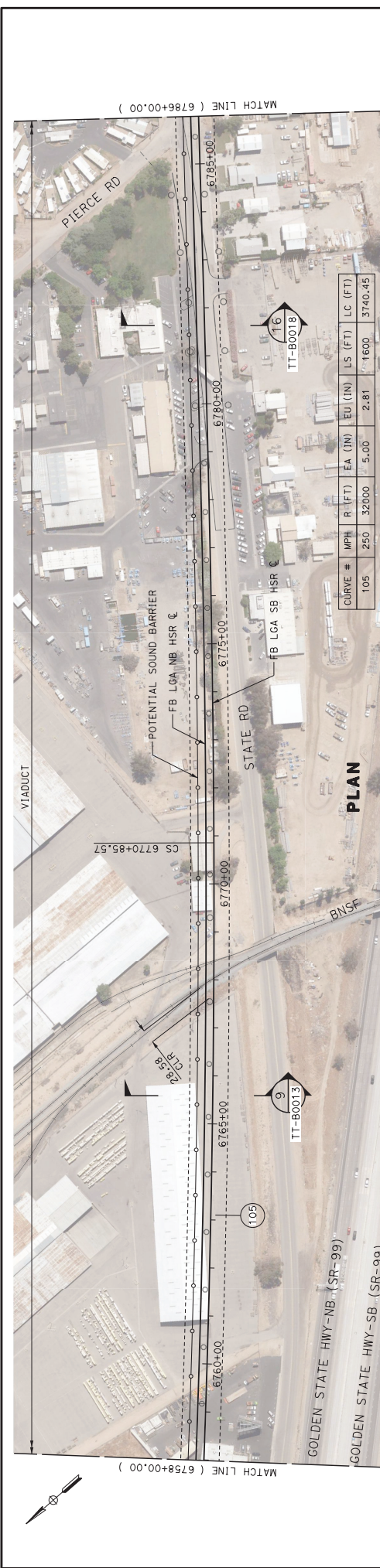
**CALIFORNIA HIGH-SPEED RAIL PROJECT
FRESNO TO BAKERSFIELD
LOCALLY GENERATED ALTERNATIVE
TRACK GUIDEWAY
STA 6702+00 TO 6730+00
PROPOSED SOUND BARRIER**



NOTES:
 1. GROUND TO TRACK LEVEL STAIRWAY ACCESS TO BE PROVIDED WITHIN 250' OF WAYSIDE FACILITY.

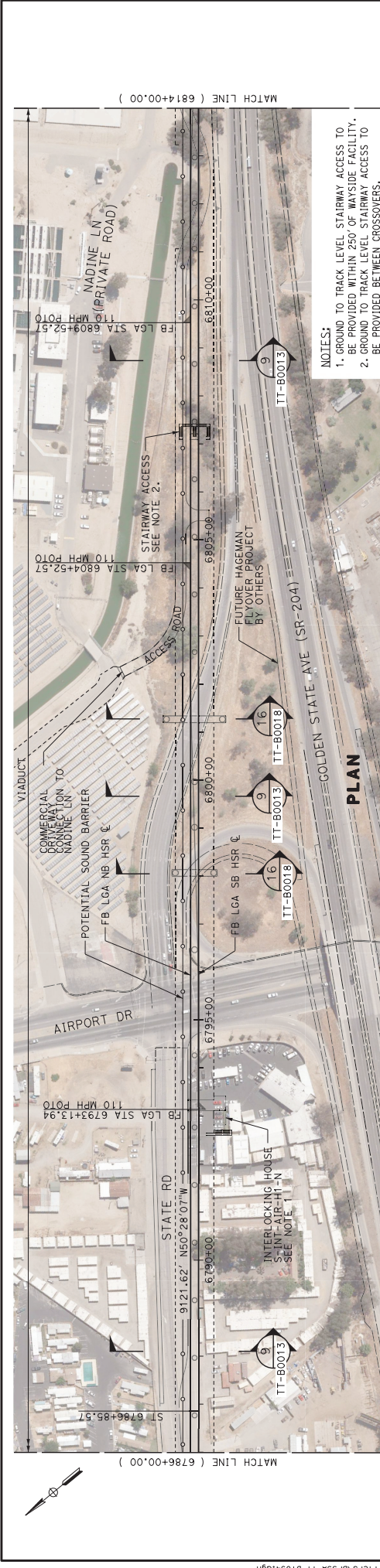


STATION	6730+00	6735+00	6740+00	6745+00	6750+00	6755+00	6758+00
CONTRACT NO.	HSR13-44						
DRAWING NO.	TT-D1032						
SCALE	AS SHOWN						
SHEET NO.	AS SHOWN						
CALIFORNIA HIGH-SPEED RAIL PROJECT FRESNO TO BAKERSFIELD LOCALLY GENERATED ALTERNATIVE TRACK GUIDEWAY STA 6730+00 TO 6758+00 PROPOSED SOUND BARRIER							
TYL INTERNATIONAL				RECORD SET PEPD DESIGN SUBMISSION			
DESIGNED BY	J. TREJO						
CHECKED BY	N. OLINO						
DATE	10/28/2016						
BY	ENK	APP	DATE	DESCRIPTION			

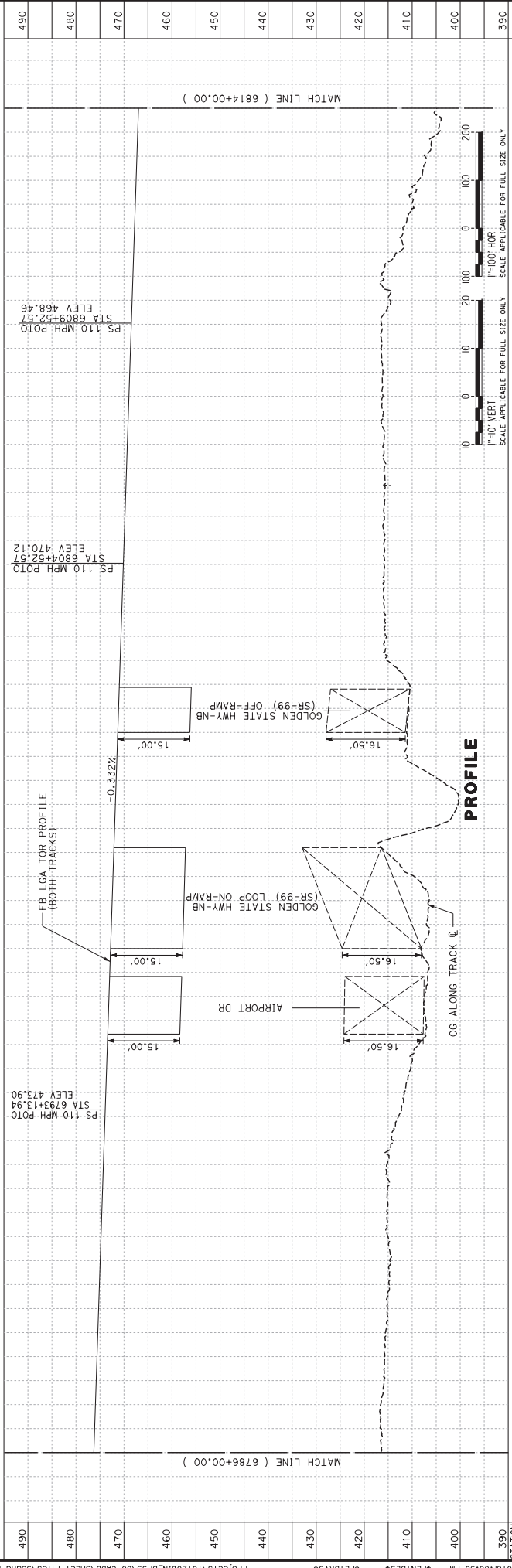


STATION	6758+00	6760+00	6770+00	6785+00
CONTRACT NO.	HSR13-44			
DRAWING NO.	TT-D1033			
SCALE	AS SHOWN			
SHEET NO.	AS SHOWN			
CALIFORNIA HIGH-SPEED RAIL PROJECT FRESNO TO BAKERSFIELD LOCALLY GENERATED ALTERNATIVE TRACK GUIDEWAY STA 6758+00 TO 6786+00 PROPOSED SOUND BARRIER				
TYL INTERNATIONAL				
RECORD SET PEPD DESIGN SUBMISSION				
DESIGNED BY	J. TREJO	CHECKED BY	N. OLINO	DATE
DATE		DATE	P. PIENTON	10/28/2016
REV	DATE	BY	CHK	APP
				DESCRIPTION

T:\[proj]12\21\2016\10:02:24 PM #FEN1B.S #P1DRV5# Projects\10126.N.BSS\00 CAD\Sheet Files\Sound Barriers\BFS4-TT-D1033.dgn
 410 510 500 490 480 470 460 450 440 430 420 410

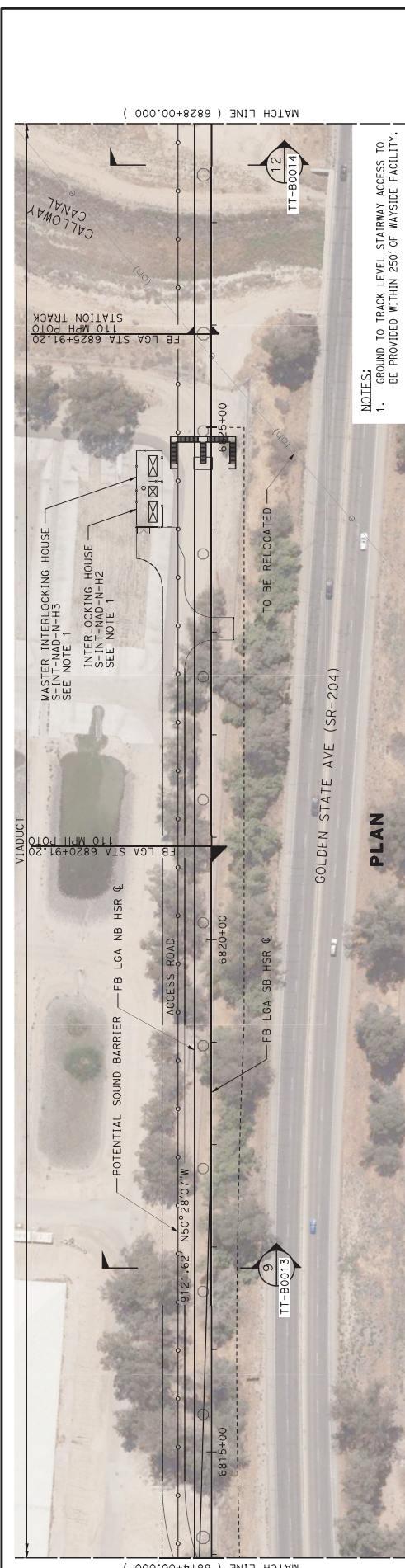


- NOTES:**
- GROUND TO TRACK LEVEL STAIRWAY ACCESS TO BE PROVIDED WITHIN 250' OF WAYSIDE FACILITY.
 - GROUND TO TRACK LEVEL STAIRWAY ACCESS TO BE PROVIDED BETWEEN CROSSOVERS.

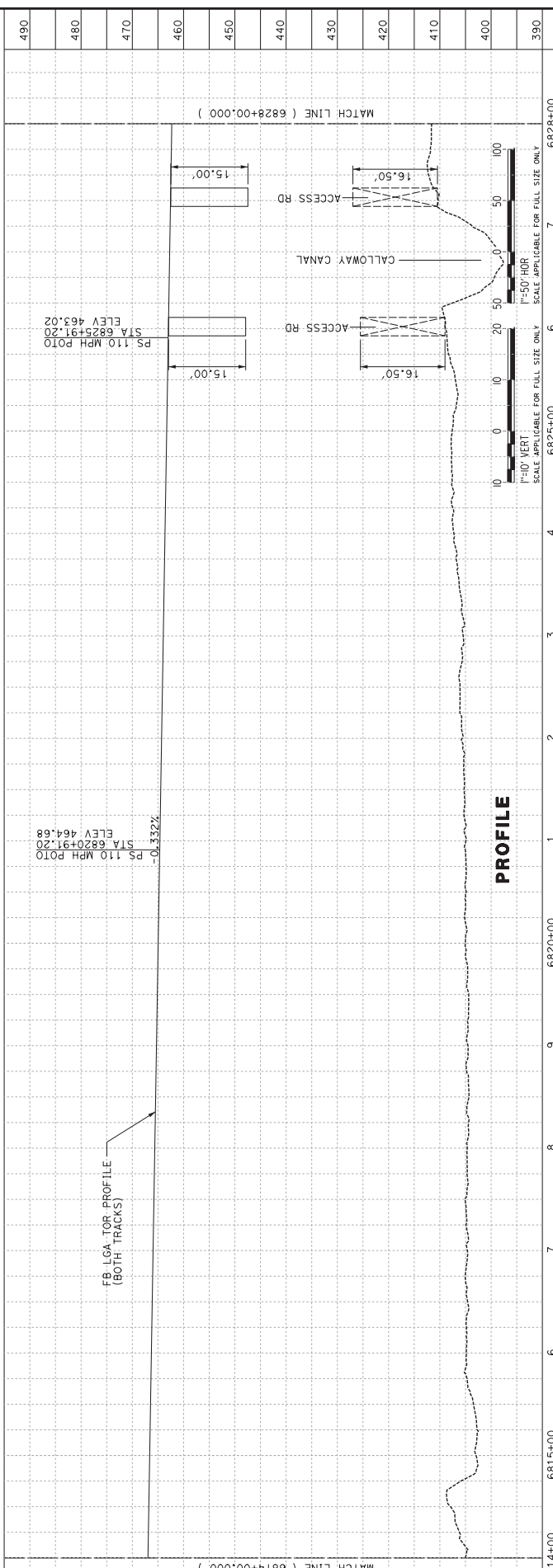


CALIFORNIA HIGH-SPEED RAIL PROJECT FRESNO TO BAKERSFIELD LOCALLY GENERATED ALTERNATIVE TRACK GUIDEWAY STA 6786+00 TO 6814+00 PROPOSED SOUND BARRIER				TYL INTERNATIONAL		RECORD SET PP&D DESIGN SUBMISSION		DESIGNED BY J. TREJO CHECKED BY N. OLINO DRAWN BY E. WINTERS IN CHARGE P. PIENTON DATE 10/28/2016	
STATION	6786+00	6790+00	6800+00	6805+00	6810+00	6814+00	CONTRACT NO.	HSR13-44	
							DRAWING NO.	TT-D1034	
							SCALE	AS SHOWN	
							SHEET NO.		

PROJECTS\701206.N.BF55\00.CADD\Sheet Files\Sound Barriers\BF55-TT-D1034.dgn
 #P10RV5# #PENTBLS# #PENTBLS# #PENTBLS#
 12/21/2016 10:00:30 PM
 12/21/2016 10:00:30 PM
 TRL\jrejo



NOTES:
1. GROUND TO TRACK LEVEL STAIRWAY ACCESS TO BE PROVIDED WITHIN 250' OF WAYSIDE FACILITY.



REV	DATE	BY	CHK	APP	DESCRIPTION

DESIGNED BY J. TREJO	7
CHECKED BY J. TREJO	7
DATE 10/28/2016	7
DESIGNED BY E. WINTERS	8
CHECKED BY P. PENTON	8
DATE 10/28/2016	8

STATION	6814+00	6815+00	6820+00	6825+00	6828+00
CONTRACT NO.	HSR13-44				
DRAWING NO.	TT-D1035				
SCALE	AS SHOWN				
SHEET NO.	AS SHOWN				

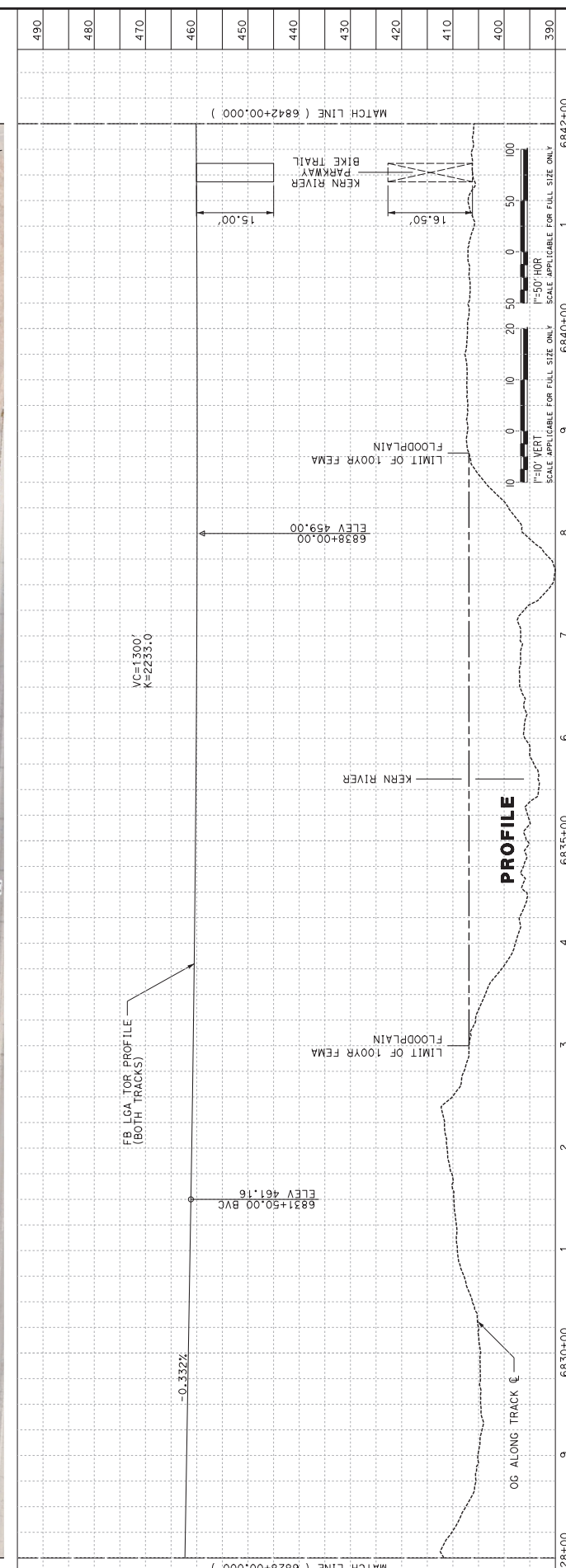
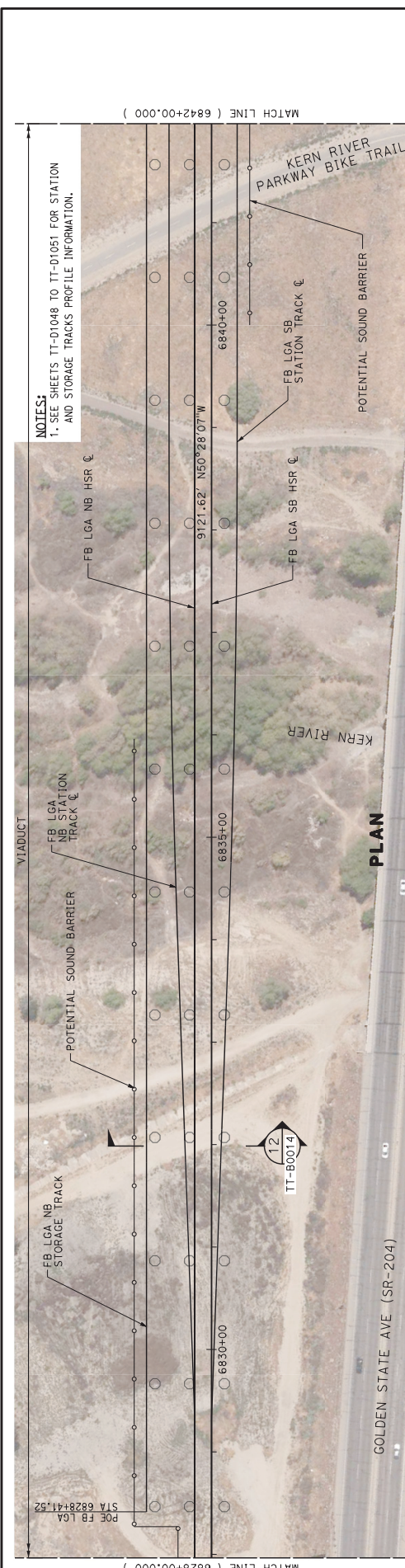


TYL INTERNATIONAL

**RECORD SET
PPDP DESIGN
SUBMISSION**

**CALIFORNIA
HIGH-SPEED RAIL AUTHORITY**

**CALIFORNIA HIGH-SPEED RAIL PROJECT
FRESNO TO BAKERSFIELD
LOCALLY GENERATED ALTERNATIVE
TRACK GUIDEWAY
STA 6814+00 TO 6828+00
PROPOSED SOUND BARRIER**



STATION	6828+00	9	6830+00	1	2	3	4	6	7	8	9	6840+00	6842+00
DESIGNED BY	J. TREJO												
CHECKED BY	E. WINTERS												
IN CHARGE	P. PENTON												
DATE	10/28/2016												
DESCRIPTION													
CONTRACT NO.	HSR13-44												
DRAWING NO.	TT-D1036												
SCALE	AS SHOWN												
SHEET NO.													

CALIFORNIA HIGH-SPEED RAIL PROJECT
FRESNO TO BAKERSFIELD
 LOCALLY GENERATED ALTERNATIVE
 TRACK GUIDEWAY
 STA 6828+00 TO 6842+00
 PROPOSED SOUND BARRIER

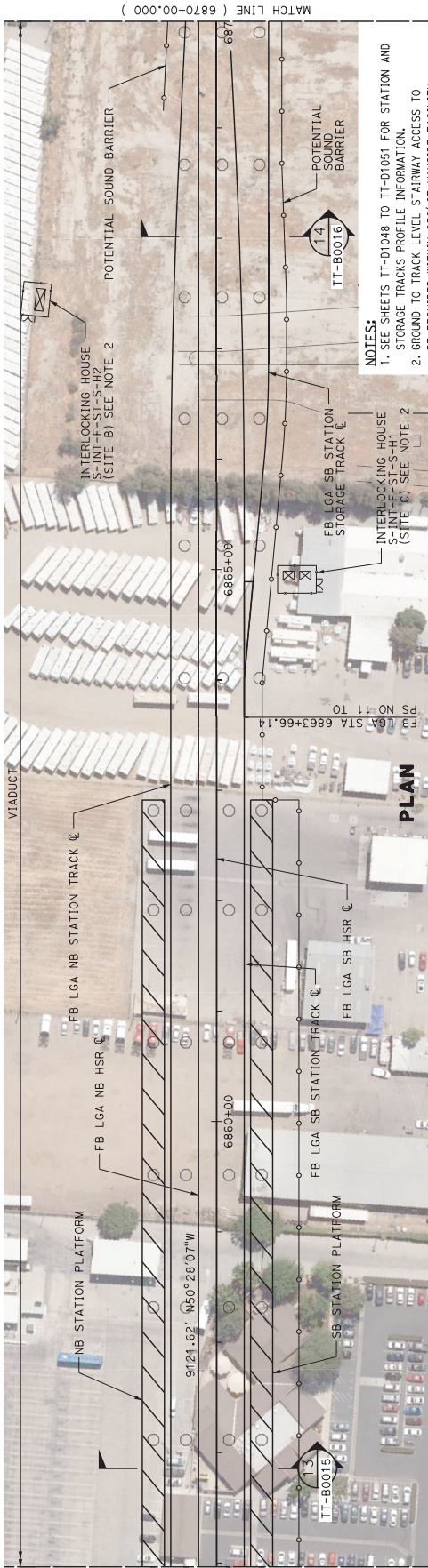


TYL INTERNATIONAL

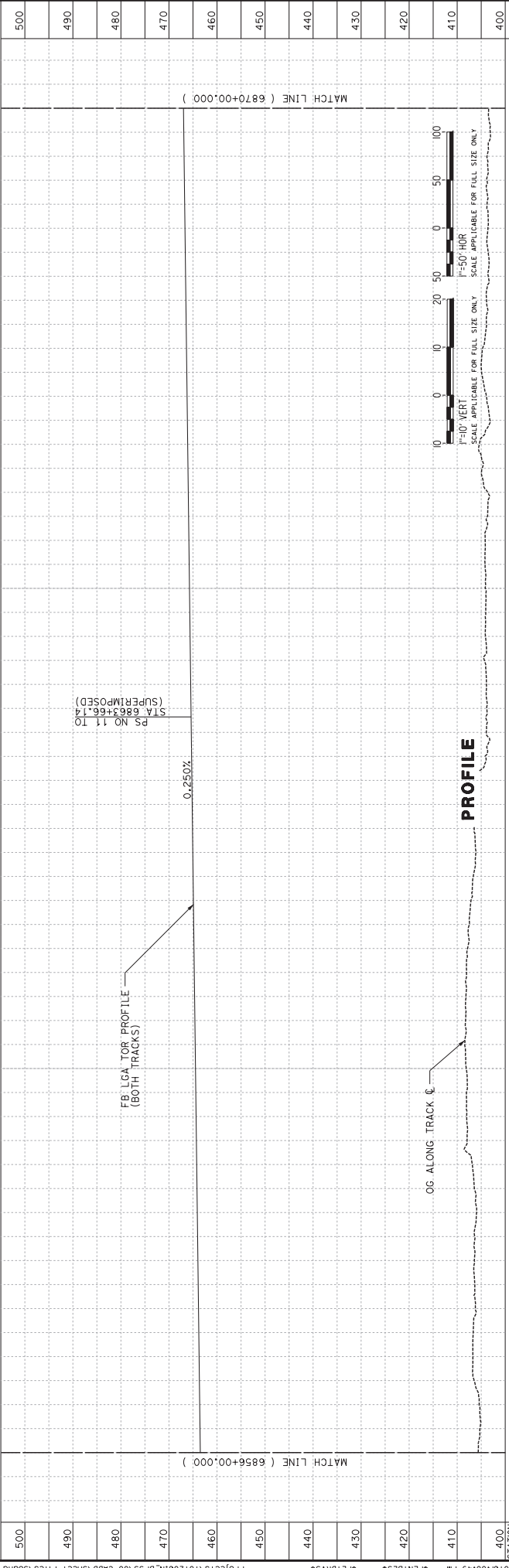
RECORD SET
PERP DESIGN
SUBMISSION

NOTES:
 1. SEE SHEETS TT-D1048 TO TT-D1051 FOR STATION AND STORAGE TRACKS PROFILE INFORMATION.

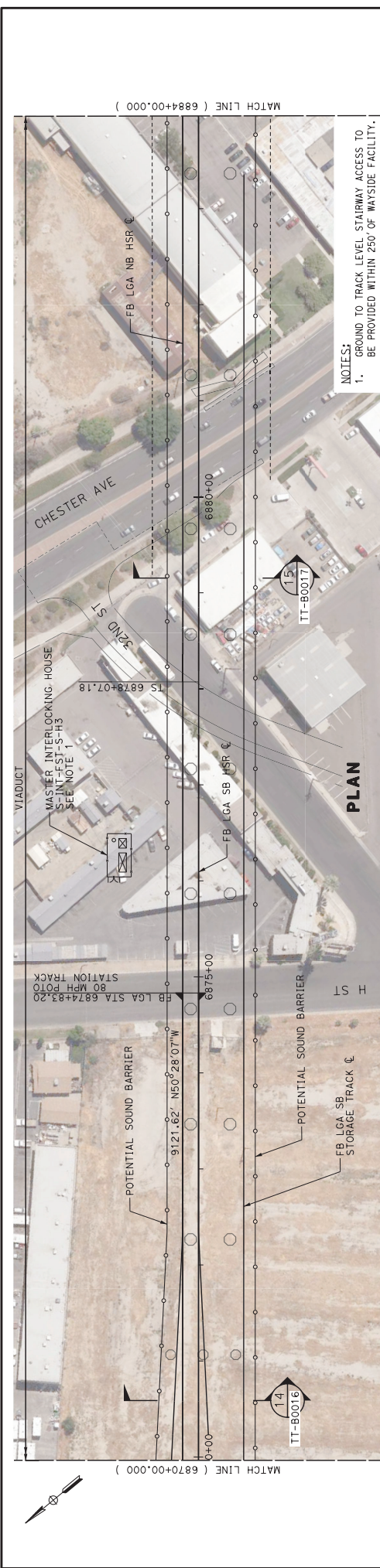
PROJECTS\701206.N.BF55\00 CAD\Drawings\Files\Sound Barriers\BF55A-TT-D1036.dgn



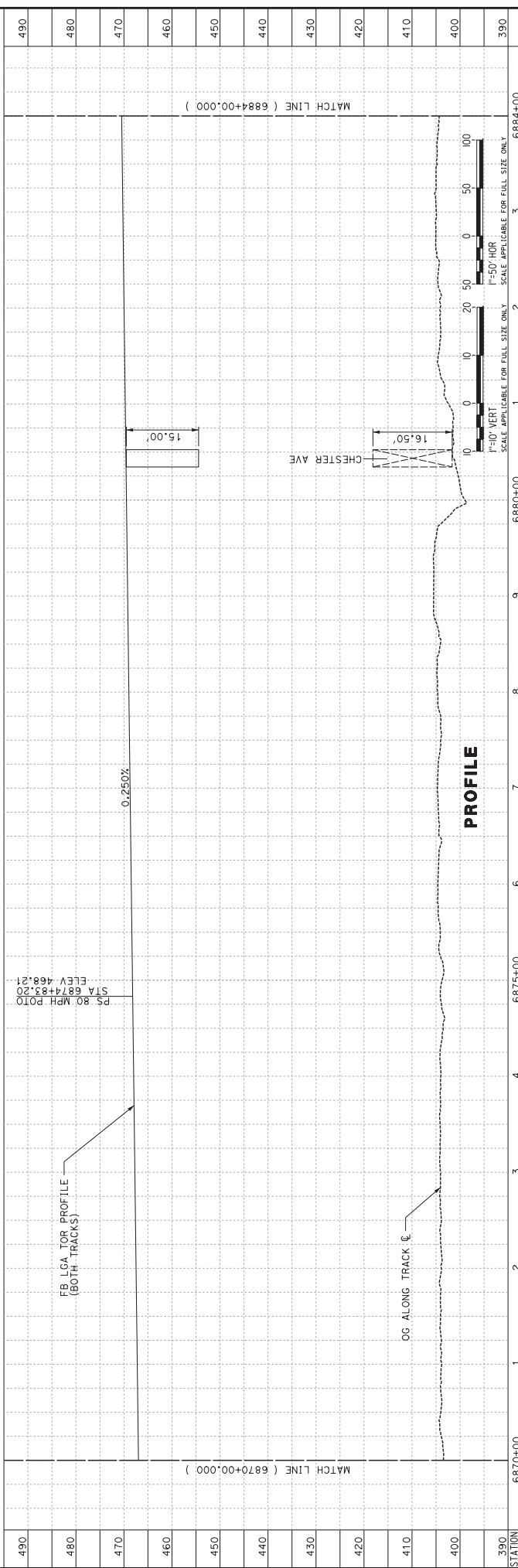
- NOTES:**
1. SEE SHEETS TT-01048 TO TT-01051 FOR STATION AND STORAGE TRACKS PROFILE INFORMATION.
 2. GROUND TO TRACK LEVEL STAIRWAY ACCESS TO BE PROVIDED WITHIN 250' OF WAYSIDE FACILITY.



STATION	6856+00	7	8	9	6860+00	1	2	3	4	5	6	7	8	9	6870+00
REV	DATE	BY	CHK	APP	DESCRIPTION	<p align="center">RECORD SET</p> <p align="center">PP3D DESIGN SUBMISSION</p> <p>DESIGNED BY: J. TREJO</p> <p>CHECKED BY: J. TREJO</p> <p>DATE: 10/28/2016</p> <p>DESIGNED BY: E. WINTERS</p> <p>DATE: 10/28/2016</p> <p>CHECKED BY: P. PLENTON</p>									
<p align="center"> TYL INTERNATIONAL </p>					<p align="center"> CALIFORNIA HIGH-SPEED RAIL AUTHORITY </p>					<p align="center"> CALIFORNIA HIGH-SPEED RAIL PROJECT FRESNO TO BAKERSFIELD LOCALLY GENERATED ALTERNATIVE TRACK GUIDEWAY STA 6856+00 TO 6870+00 PROPOSED SOUND BARRIER </p>					
<p align="center">CONTRACT NO. HSR13-44 DRAWING NO. TT-D1038 SCALE AS SHOWN SHEET NO.</p>															

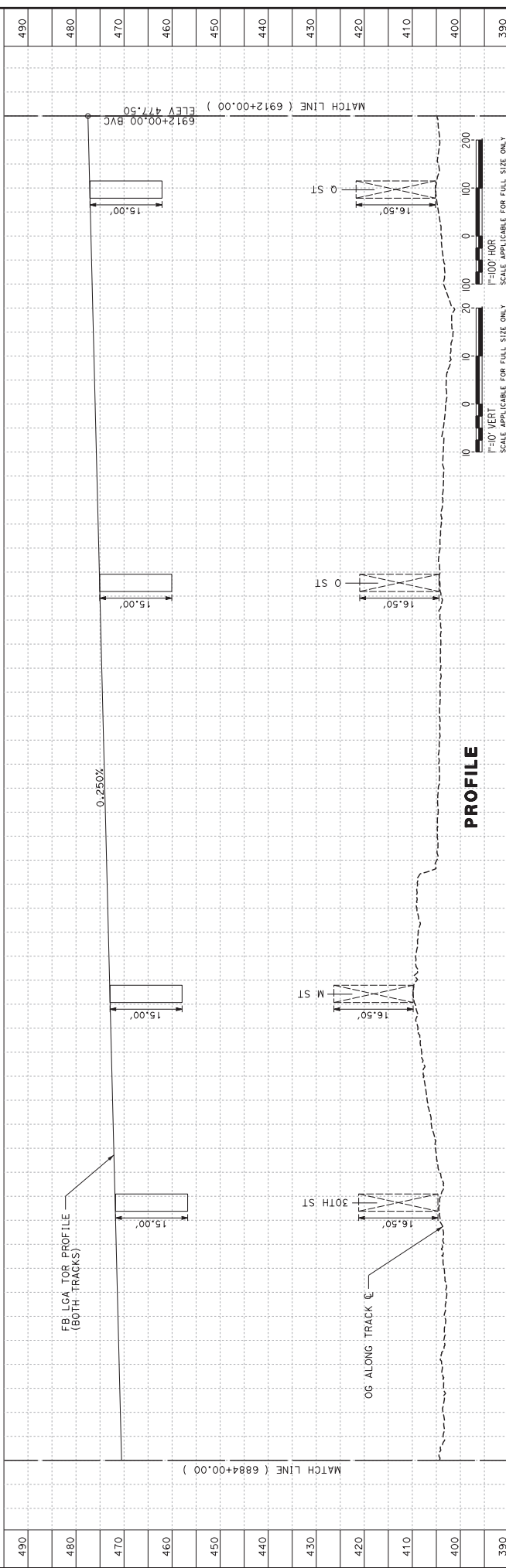
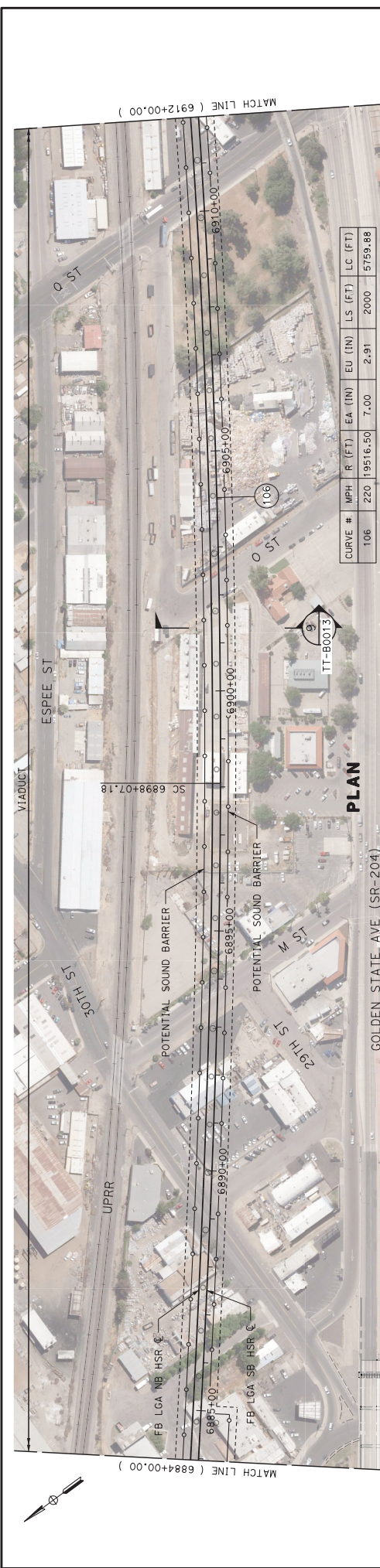


NOTES:
 1. GROUND TO TRACK LEVEL STAIRWAY ACCESS TO BE PROVIDED WITHIN 250' OF WAYSIDE FACILITY.



STATION	6870+00	1	2	3	4	6875+00	6880+00	6884+00
BY								
DATE								
APP								
DESCRIPTION								
DESIGNED BY	J. TREJO							
CHECKED BY	J. TREJO							
IN CHARGE	E. WINTERS							
DATE	10/28/2016							
RECORD SET PREP DESIGN SUBMISSION								
TYL INTERNATIONAL						CALIFORNIA HIGH-SPEED RAIL AUTHORITY		
CALIFORNIA HIGH-SPEED RAIL PROJECT FRESNO TO BAKERSFIELD LOCALLY GENERATED ALTERNATIVE TRACK GUIDEWAY STA 6870+00 TO 6884+00 PROPOSED SOUND BARRIER								
CONTRACT NO. HSR13-44								
DRAWING NO. TT-D1039								
SCALE AS SHOWN								
SHEET NO.								

T:\[fresno]12\21\2016\10:41 PM #FENBLS# #FLTRV5# Projects\701206.N.BF55\00 CAD\Sheet Files\Sound Barriers\BF54-TT-D1039.dgn



DESIGNED BY
J. TREJO

CHECKED BY
E. WINTERS

IN CHARGE
P. PIENTON

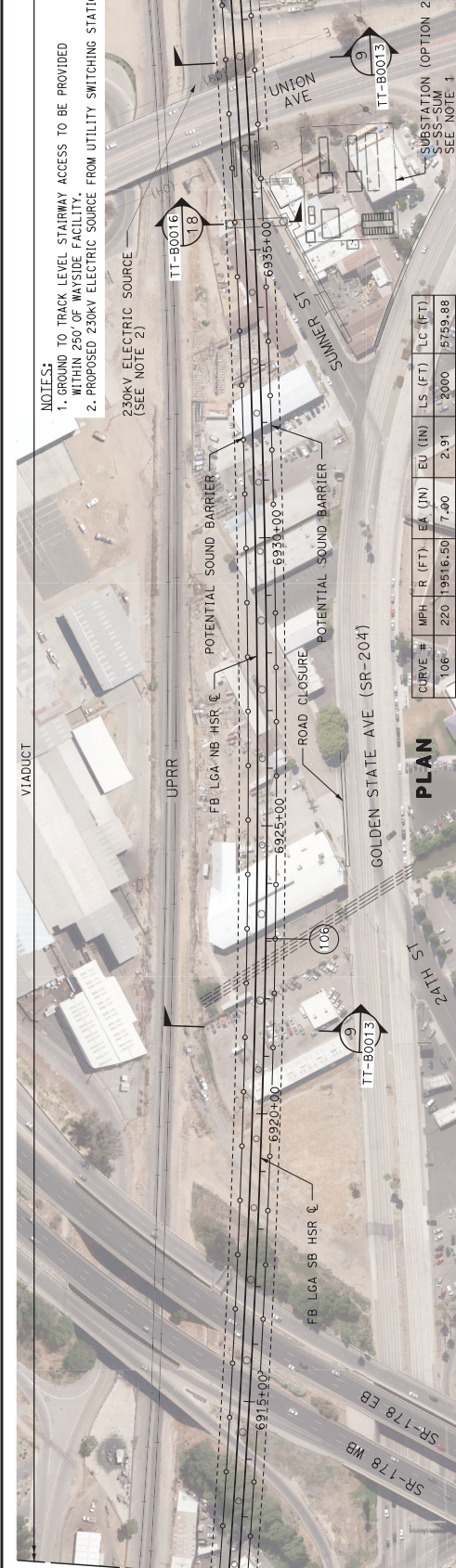
DATE
10/28/2016

RECORD SET
PP&D DESIGN
SUBMISSION

TYL INTERNATIONAL

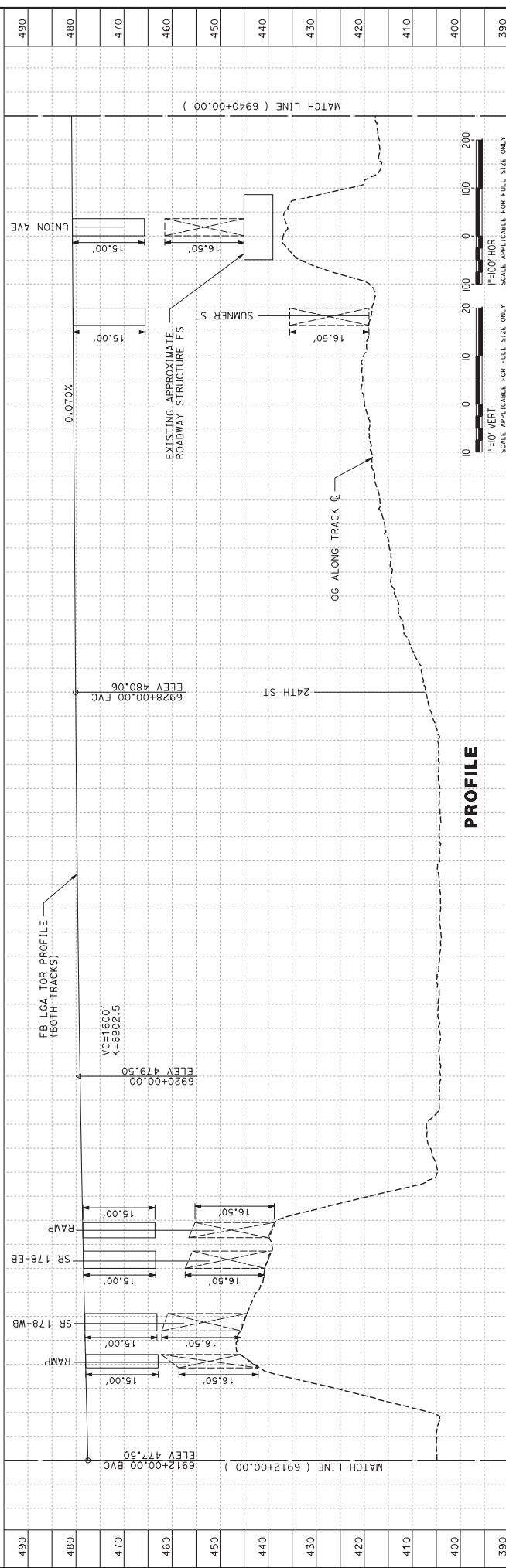
CALIFORNIA HIGH-SPEED RAIL PROJECT
FRESNO TO BAKERSFIELD
 LOCALLY GENERATED ALTERNATIVE
 TRACK GUIDEWAY
 STA 6884+00 TO 6912+00
 PROPOSED SOUND BARRIER

REV	DATE	BY	CHK	APP	DESCRIPTION



- NOTES:**
- GROUND TO TRACK LEVEL STAIRWAY ACCESS TO BE PROVIDED WITHIN 250' OF WAYSIDE FACILITY.
 - PROPOSED 230KV ELECTRIC SOURCE FROM UTILITY SWITCHING STATION.
- 230KV ELECTRIC SOURCE (SEE NOTE 2)

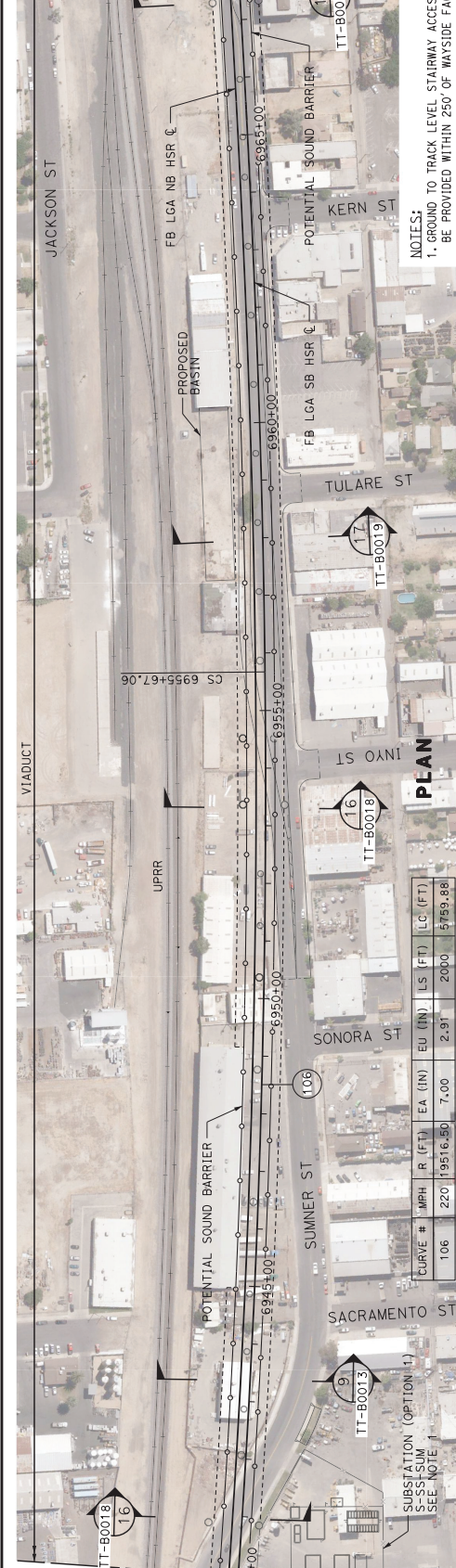
CURVE #	MPH	R (FT)	EA (IN)	EU (IN)	LS (FT)	LC (FT)
106	220	19816.50	7.00	2.91	2000	15759.88



STATION	6912+00	6915+00	6920+00	6925+00	6930+00	6935+00	6940+00
DESIGNED BY	J. TREJO						
CHECKED BY	E. WINTERS						
IN CHARGE	P. PLENTON						
DATE	10/28/2016						
DESCRIPTION							
CONTRACT NO.	HSR13-44						
DRAWING NO.	TT-D1041						
SCALE	AS SHOWN						
SHEET NO.							

CALIFORNIA HIGH-SPEED RAIL PROJECT
FRESNO TO BAKERSFIELD
 LOCALLY GENERATED ALTERNATIVE
 TRACK GUIDEWAY
 STA 6912+00 TO 6940+00
 PROPOSED SOUND BARRIER

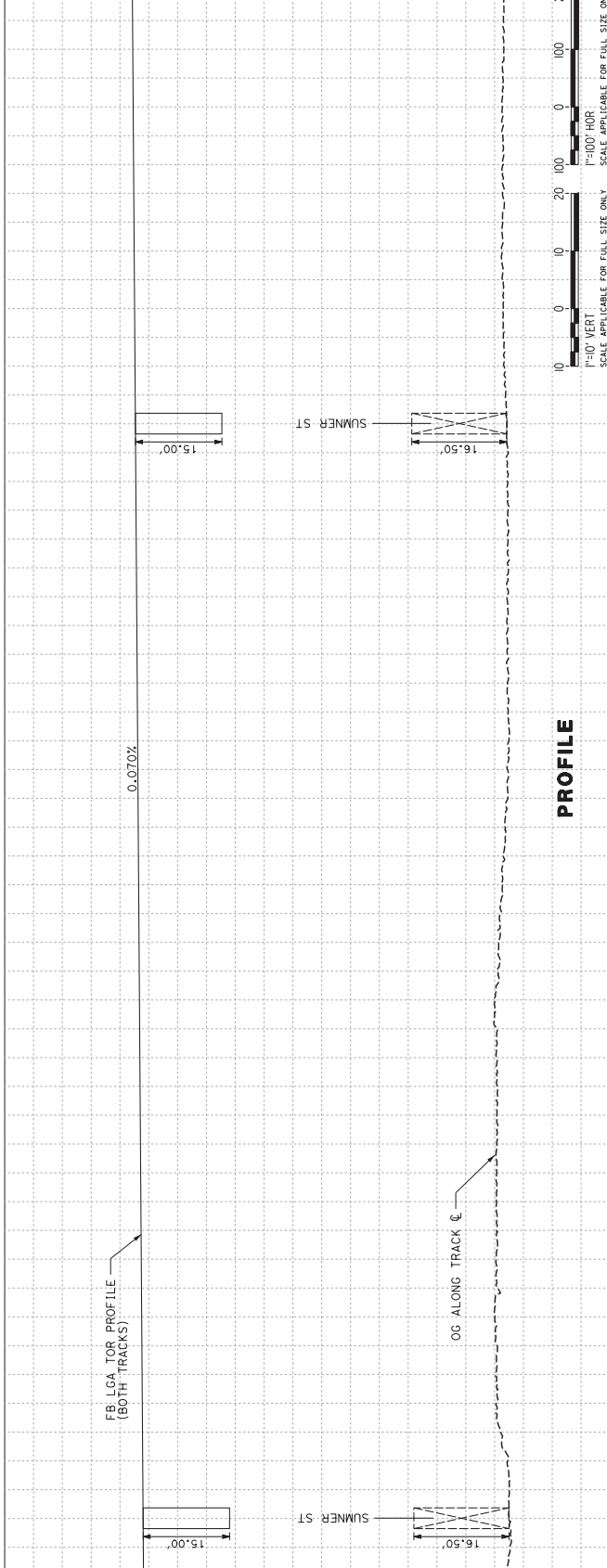
TYL INTERNATIONAL
 HIGH-SPEED RAIL AUTHORITY



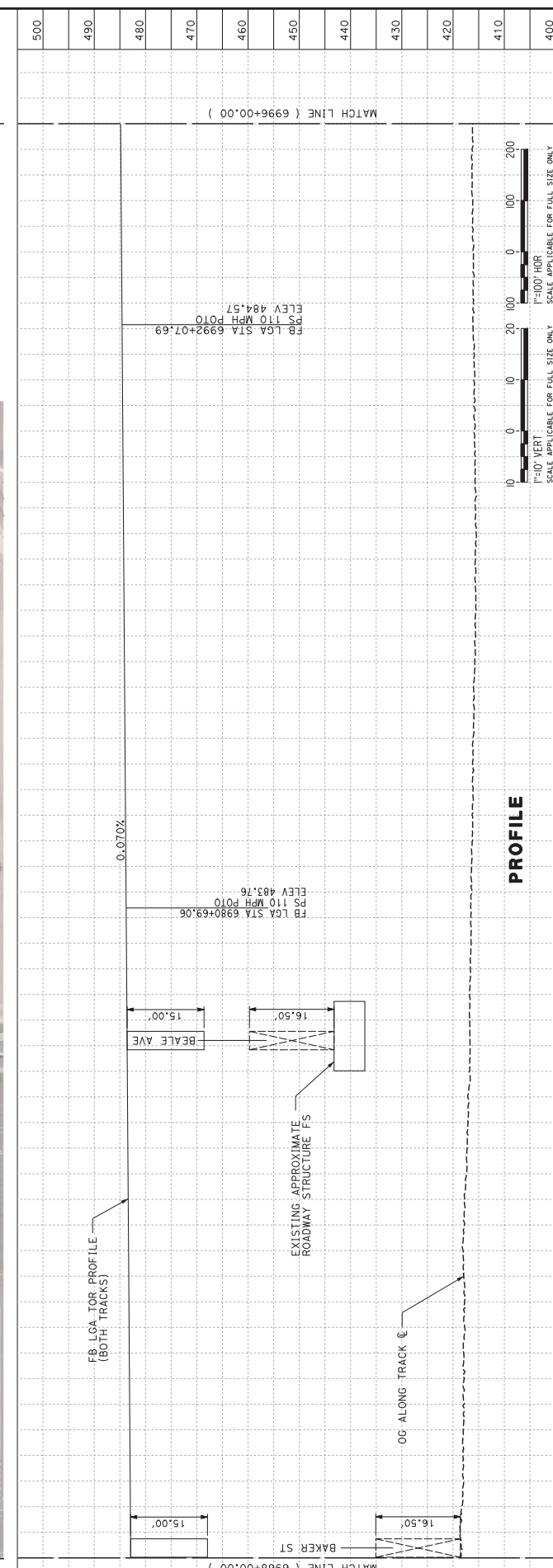
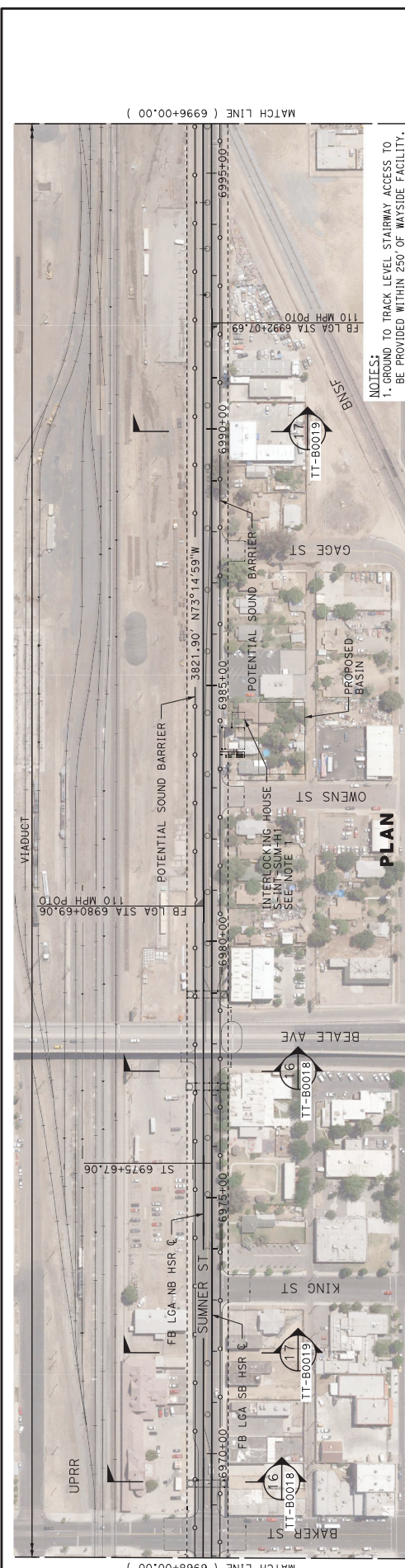
CURVE #	MPH	R (FT)	EA (IN)	EA (IN)	EU (IN)	LS (FT)	LC (FT)
106	220	19516.50	7.00	2.91	2000	5789.88	

SUBSTATION (OPTION 1)
S-SS-SUM
SEE NOTE 1

NOTES:
1. GROUND TO TRACK LEVEL STAIRWAY ACCESS TO BE PROVIDED WITHIN 250' OF WAYSIDE FACILITY.



STATION	6940+00	6950+00	6955+00	6960+00	6965+00	6968+00
DESIGNED BY	J. TREJO					
CHECKED BY	J. TREJO					
DATE	10/28/2016					
DESIGNED BY	E. WINTERS					
CHECKED BY	P. PIENTON					
DATE	10/28/2016					
RECORD SET	RECORD SET PREP DESIGN SUBMISSION					
DESIGNER	TYL INTERNATIONAL					
PROJECT	CALIFORNIA HIGH-SPEED RAIL PROJECT FRESNO TO BAKERSFIELD LOCALLY GENERATED ALTERNATIVE TRACK GUIDEWAY STA 6940+00 TO 6968+00 PROPOSED SOUND BARRIER					
CONTRACT NO.	HSR13-44					
DRAWING NO.	TT-D1042					
SCALE	AS SHOWN					
SHEET NO.	AS SHOWN					

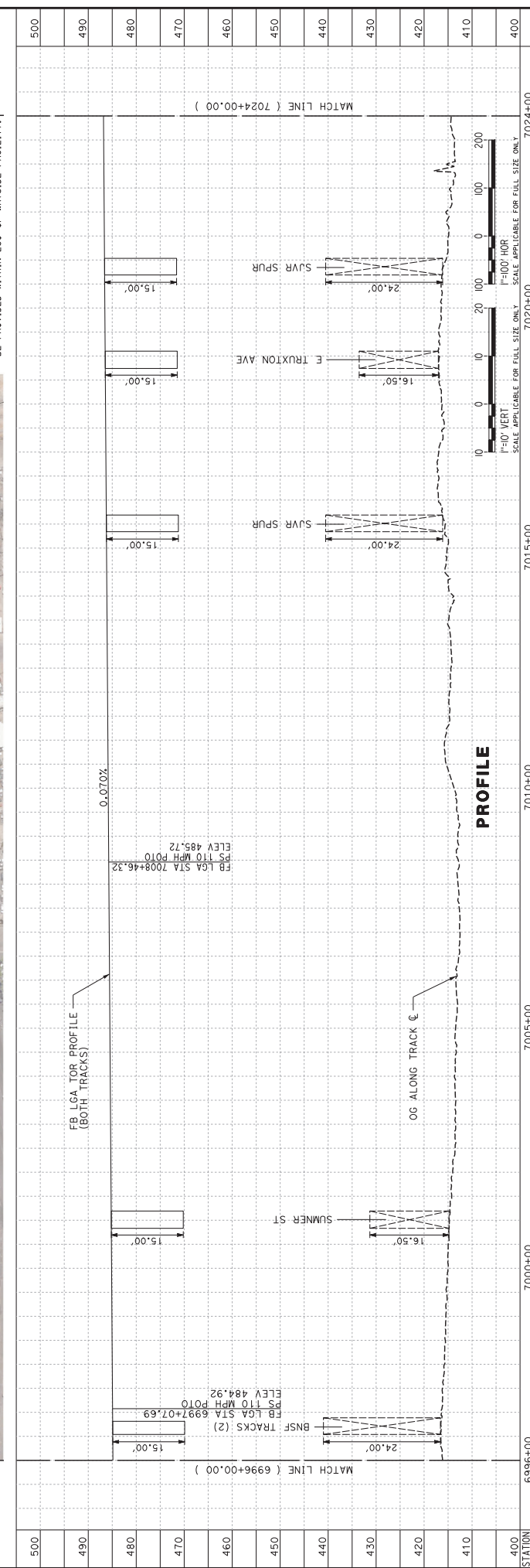
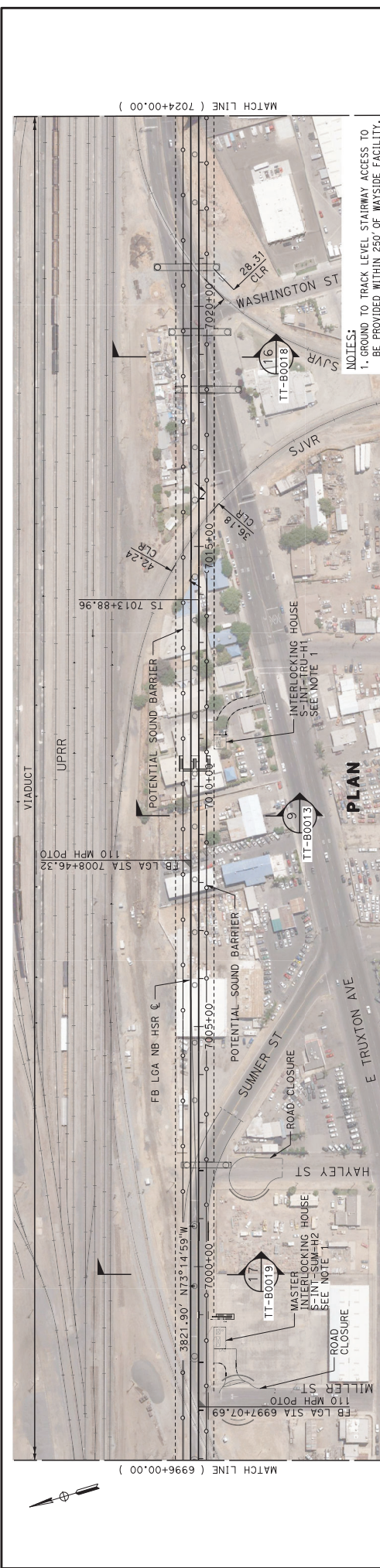


STATION	6968+00	6970+00	6975+00	6980+00	6985+00	6990+00	6995+00
DESIGNED BY	J. TREJO						
CHECKED BY	J. TREJO						
DATE	10/28/2016						
DESIGNATION	RECORD SET PEPD DESIGN SUBMISSION						
CONTRACT NO.	HSR13-44						
DRAWING NO.	TT-D1043						
SCALE	AS SHOWN						
SHEET NO.	AS SHOWN						

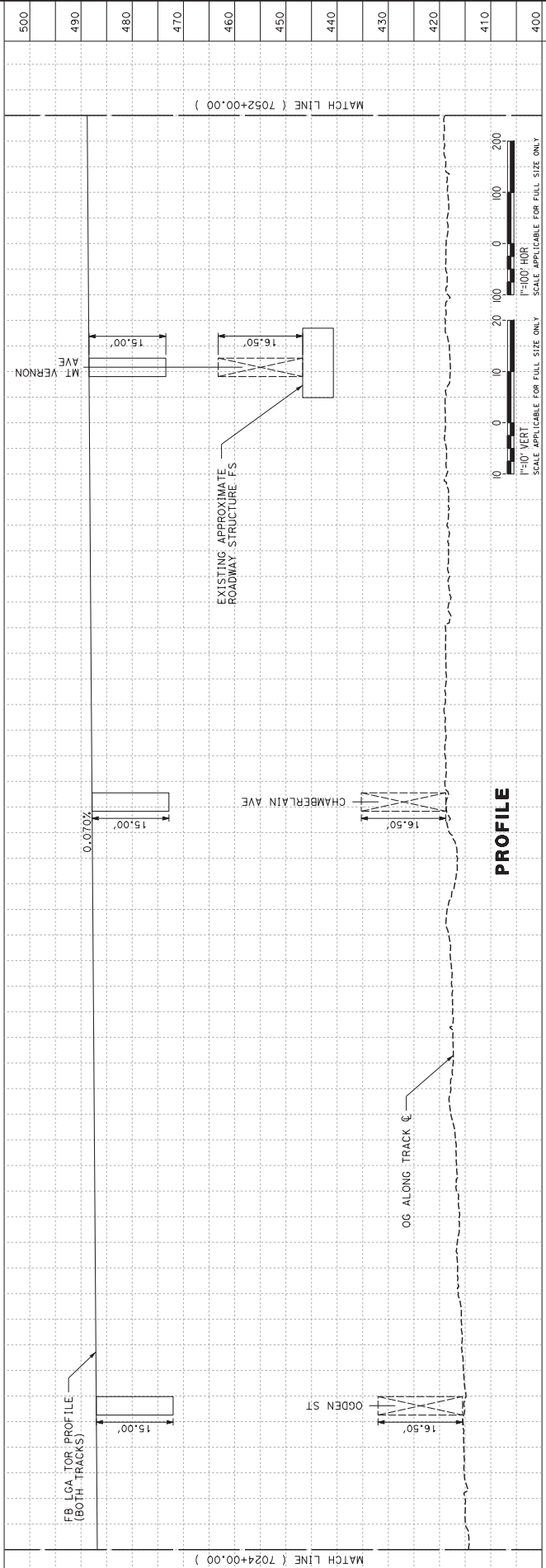
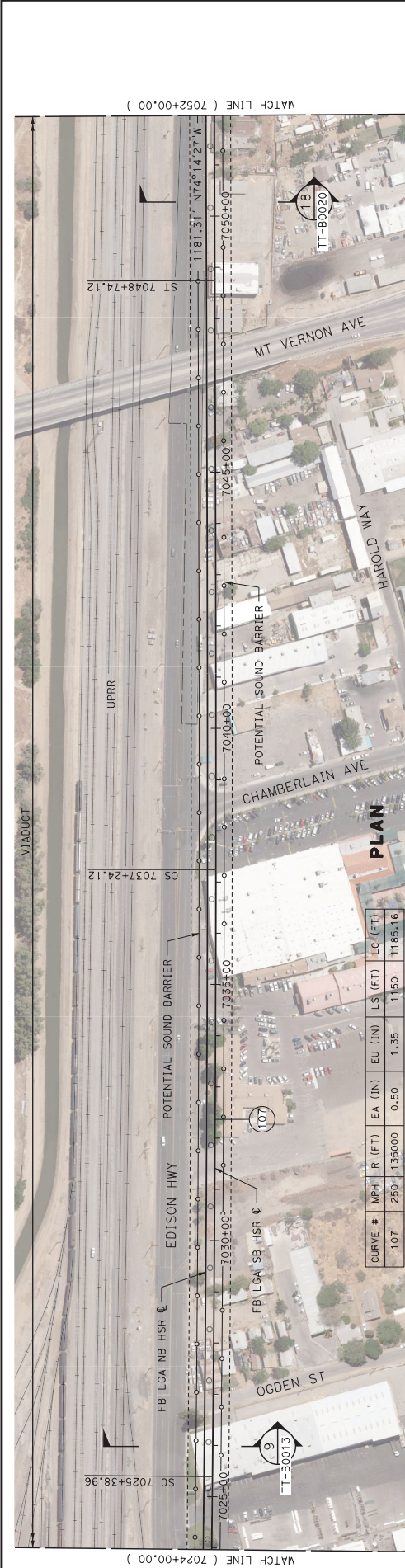
CALIFORNIA HIGH-SPEED RAIL PROJECT
FRESNO TO BAKERSFIELD
 LOCALLY GENERATED ALTERNATIVE
 TRACK GUIDEWAY
 STA 6968+00 TO 6996+00
 PROPOSED SOUND BARRIER

TYL INTERNATIONAL

U.S. GEOLOGICAL SURVEY
 #P10RVS# #PENTBS# #PENTBS# #PENTBS#
 Projects\101206.N.BF55\00 CAD\Sheet Files\Sound Barriers\BF55-TT-D1043.dgn



STATION	6996+00	7000+00	7005+00	7010+00	7015+00	7020+00	7024+00
DESIGNED BY	J. TREJO						
CHECKED BY	J. TREJO						
DATE	10/28/2016						
DESIGNED BY	E. WINTERS						
CHECKED BY	P. PIENTON						
DATE	10/28/2016						
RECORD SET	RECORD SET PEPD DESIGN SUBMISSION						
CALIFORNIA HIGH-SPEED RAIL PROJECT FRESNO TO BAKERSFIELD LOCALLY GENERATED ALTERNATIVE TRACK GUIDEWAY STA 6996+00 TO 7024+00 PROPOSED SOUND BARRIER							
CONTRACT NO.	HSR13-44						
DRAWING NO.	TT-D1044						
SCALE	AS SHOWN						
SHEET NO.	AS SHOWN						



CALIFORNIA HIGH-SPEED RAIL PROJECT
FRESNO TO BAKERSFIELD
 LOCALLY GENERATED ALTERNATIVE
 TRACK GUIDEWAY
 STA 7024+00 TO 7052+00
 PROPOSED SOUND BARRIER

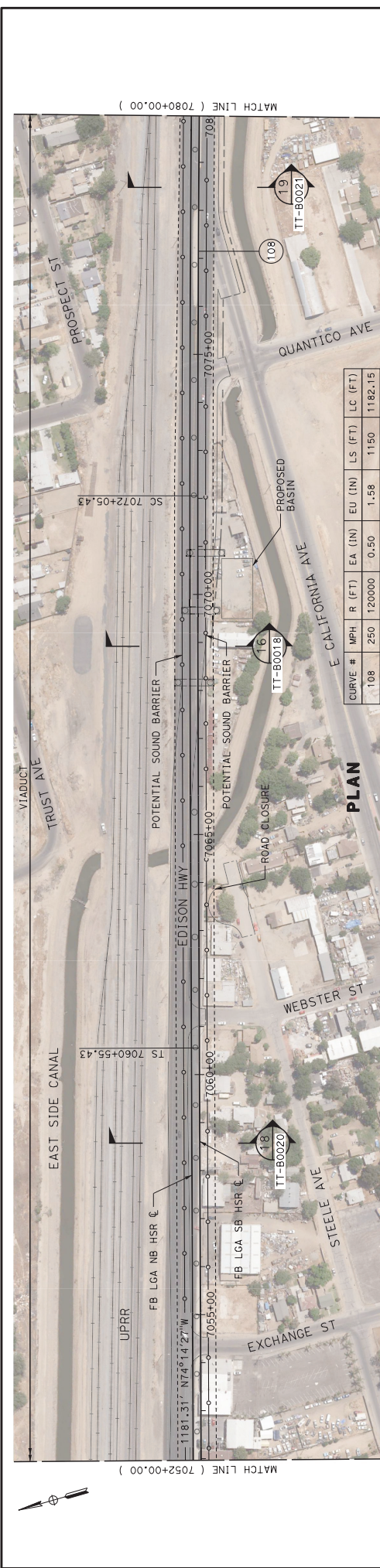
TYM INTERNATIONAL
 HIGH-SPEED RAIL AUTHORITY

RECORD SET
 PREP DESIGN
 SUBMISSION

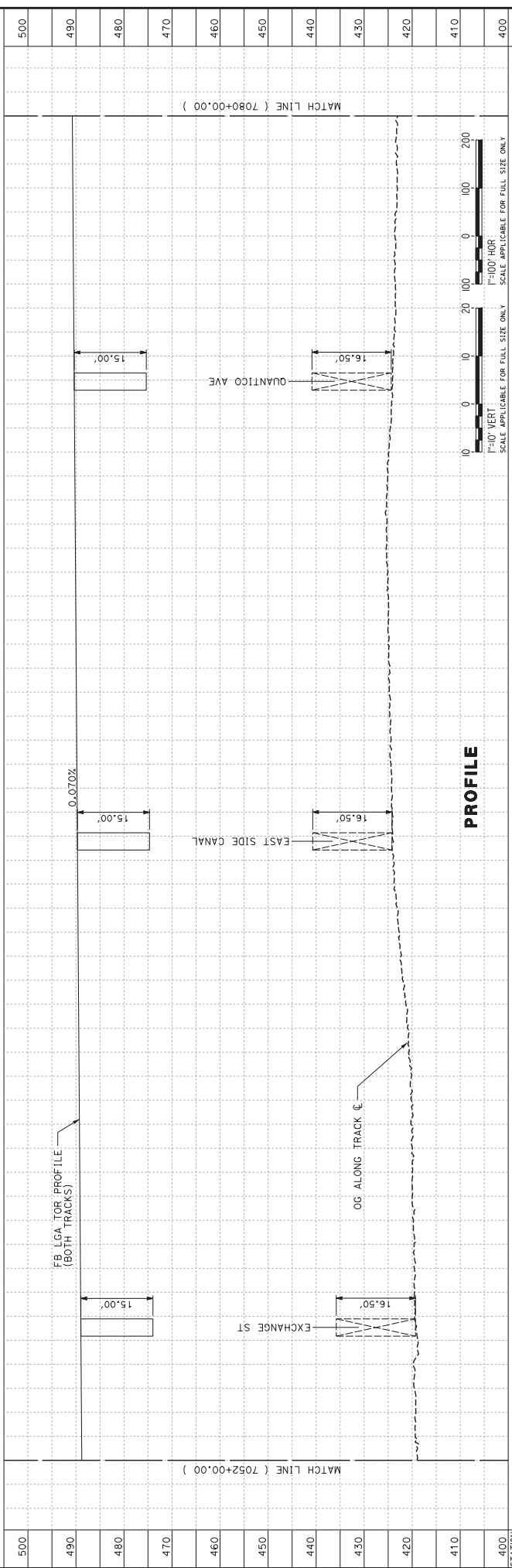
DESIGNED BY J. TREJO	DATE 10/28/2016
CHECKED BY E. WINTERS	
IN CHARGE P. PIENTON	

CONTRACT NO. HSR13-44
 DRAWING NO. TT-D1045
 SCALE AS SHOWN
 SHEET NO.

MATCH LINE (7024+00.00)
 MATCH LINE (7052+00.00)
 VIADUCT
 UPRR
 EDISON HWY
 POTENTIAL SOUND BARRIER
 FB LGA NB HSR C
 FB LGA SB HSR C
 OGDEN ST
 CHAMBERLAIN AVE
 MT VERNON AVE
 HAROLD WAY
 18
 TT-B0020
 9
 TT-B0013
 SC 7025+38.96
 CS 7037+24.12
 ST 7048+74.12
 SC 7024+00.00
 CS 7030+00.00
 CS 7035+00.00
 CS 7040+00.00
 CS 7045+00.00
 CS 7050+00.00
 CS 7052+00.00



CURVE #	MPH	R (FT)	EA (IN)	EU (IN)	LS (FT)	LC (FT)
108	250	120000	-0.50	1.58	1150	1182.15

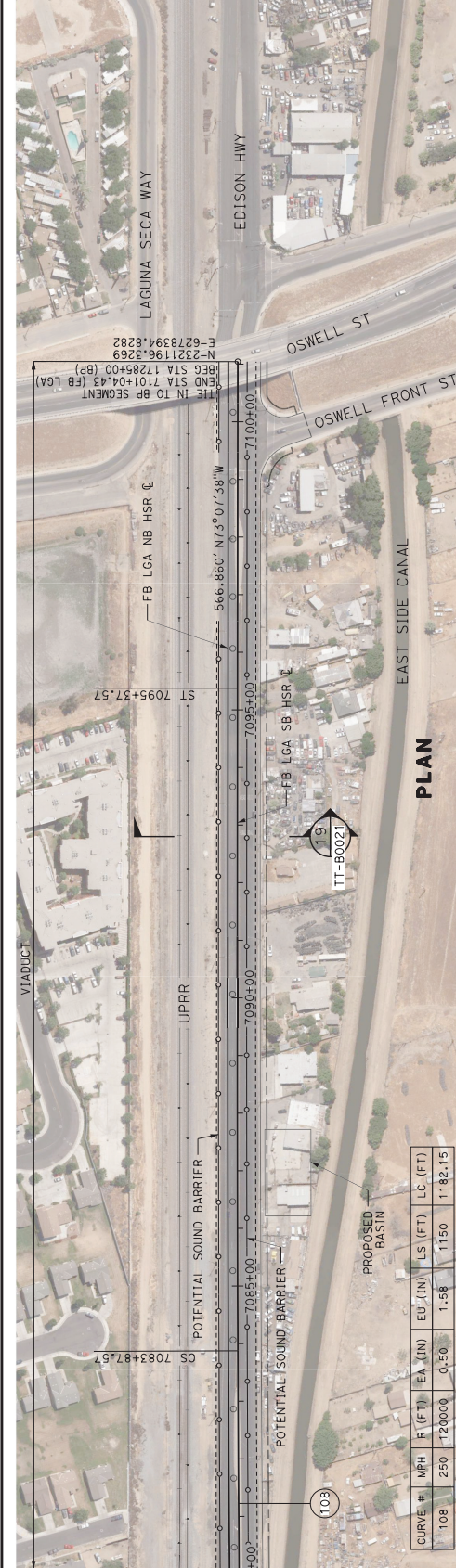


PROFILE

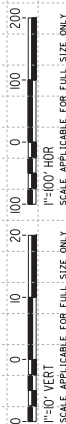
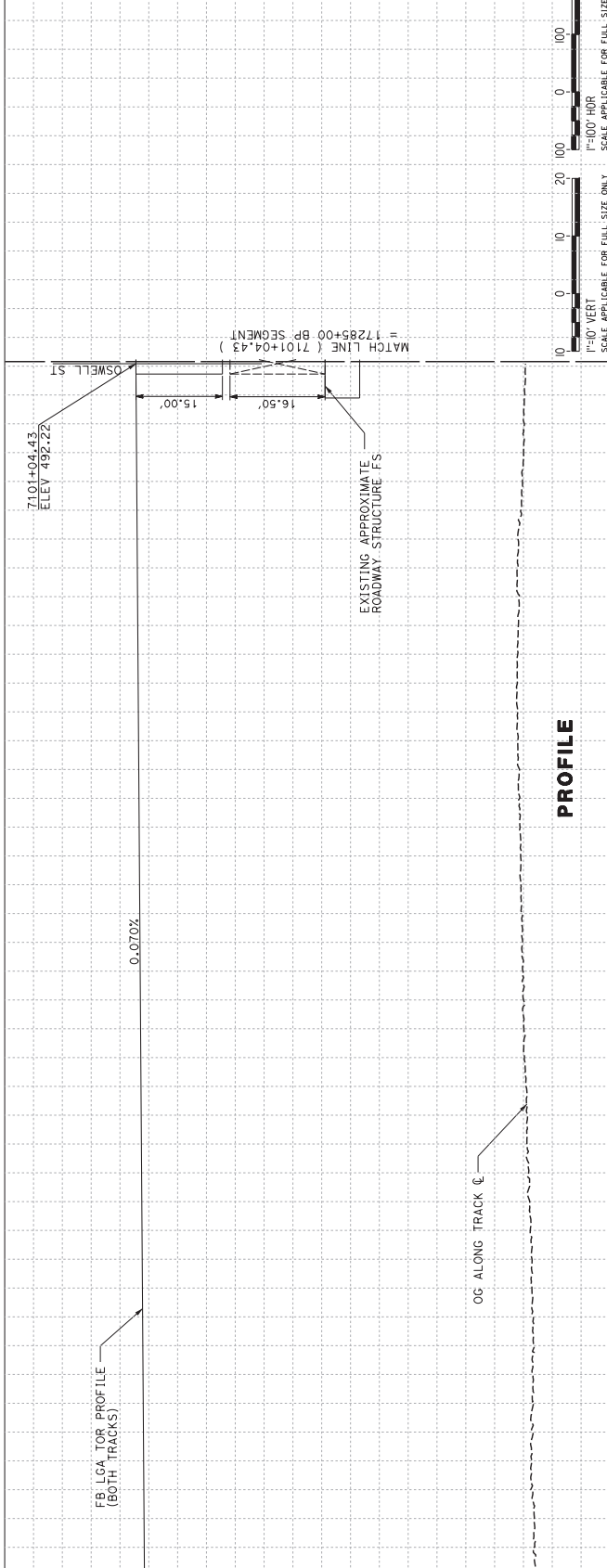


STATION	7052+00	7055+00	7060+00	7070+00	7080+00
DESIGNED BY	J. TREJO				
CHECKED BY	J. TREJO				
DATE	10/28/2016				
DESIGNED BY	E. WINTERS				
CHECKED BY	P. PLENTON				
DATE	10/28/2016				
DESCRIPTION	RECORD SET PREP DESIGN SUBMISSION				
CONTRACT NO.	HSR13-44				
DRAWING NO.	TT-D1046				
SCALE	AS SHOWN				
SHEET NO.	AS SHOWN				

CALIFORNIA HIGH-SPEED RAIL PROJECT
FRESNO TO BAKERSFIELD
 LOCALLY GENERATED ALTERNATIVE
 TRACK GUIDEWAY
 STA 7052+00 TO 7080+00
 PROPOSED SOUND BARRIER



CURVE #	MPH	R (FT)	EA (IN)	EU (IN)	EA (IN)	EU (IN)	LS (FT)	LC (FT)
108	250	120000	0.50	1.58	1.58	1.58	1150	1182.15



STATION	7080+00	7085+00	7090+00	7100+00	7105+00
DESIGNED BY	J. TREJO				
CHECKED BY	J. TREJO				
DATE	10/28/2016				
DESIGNER	TYL INTERNATIONAL				
RECORD SET	RECORD SET PREP DESIGN SUBMISSION				
PROJECT	CALIFORNIA HIGH-SPEED RAIL PROJECT FRESNO TO BAKERSFIELD LOCALLY GENERATED ALTERNATIVE TRACK GUIDEWAY STA 7080+00 TO 7101+04 PROPOSED SOUND BARRIER				
CONTRACT NO.	HSR13-44				
DRAWING NO.	TT-D1047				
SCALE	AS SHOWN				
SHEET NO.	AS SHOWN				

1711\proj\121212018\259149 PM #FEN1BLS #P1DRV5 #P1DRV5
 Projects\101206.N.BF55\00 CAD\Drawings\Files\Sound Barriers\BF55-TT-D1047.dgn