

SAN JOSE TO MERCED PROJECT SECTION

Community Working Groups
March 2020



AGENDA

SAN JOSE TO MERCED COMMUNITY WORKING GROUPS

- **Introductions & Agenda Review**
- **Draft 2020 Business Plan**
- **Prepare for the Draft EIR/EIS**
- **Outreach Update**
- **Public Comment**

MEETING OBJECTIVES

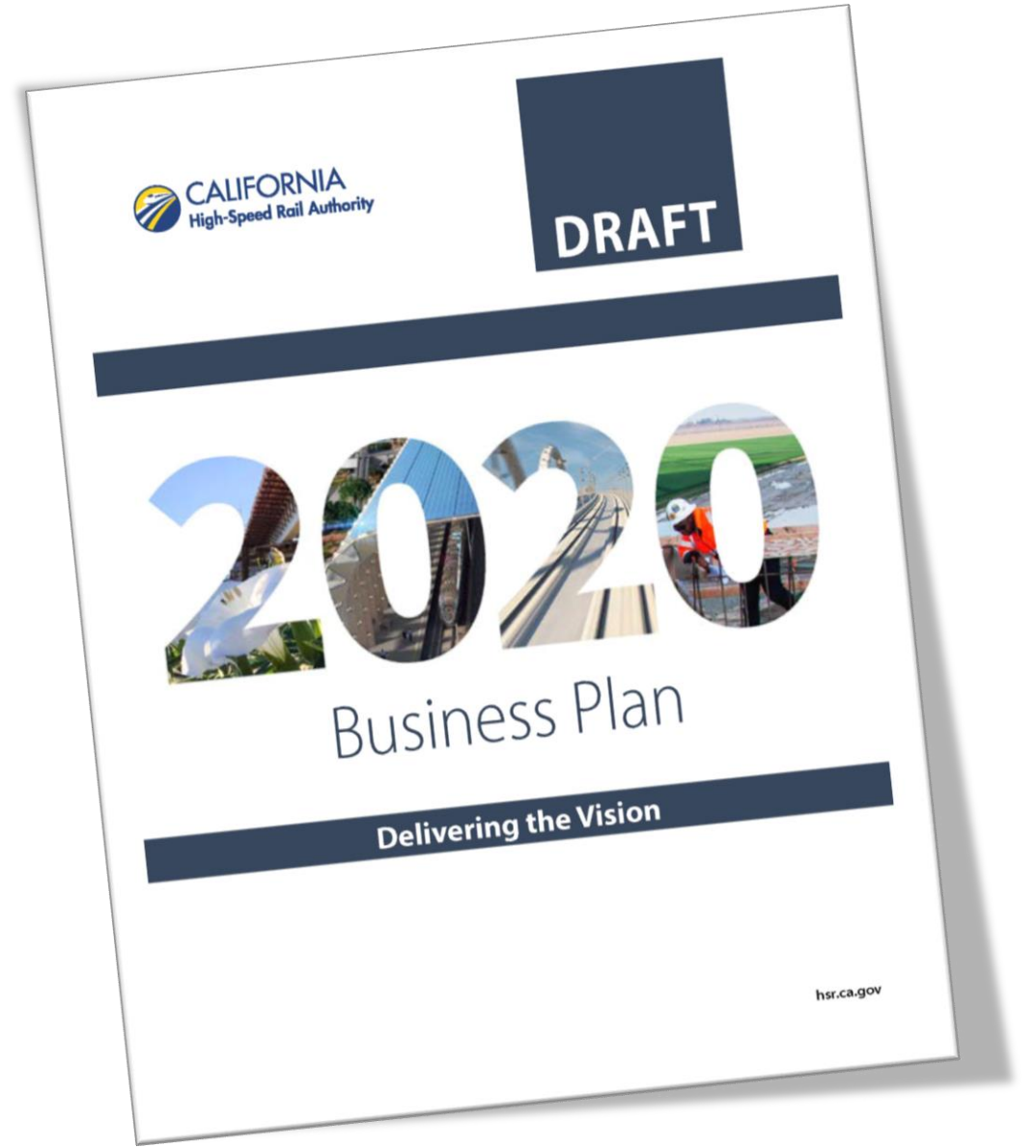
- **Share highlights of the Draft 2020 Business Plan**
- **Prepare members for the release of the Draft EIR/EIS, including how to provide comment**
- **Provide an update on outreach activities**

DRAFT 2020 BUSINESS PLAN



DRAFT 2020 BUSINESS PLAN

- **Required by PUC Section 185033**
 - » Foundational document for implementing the program
 - » Required every two years (even years)
- **Represents the status of the program at the current point in time**
- **Summarizes the Authority's approach to implementation**
- **Includes:**
 - » Updated capital cost and other estimates
 - » Updated ridership and revenue forecasts
 - » Summary of progress over last two years
 - » Review of current challenges and how to address them



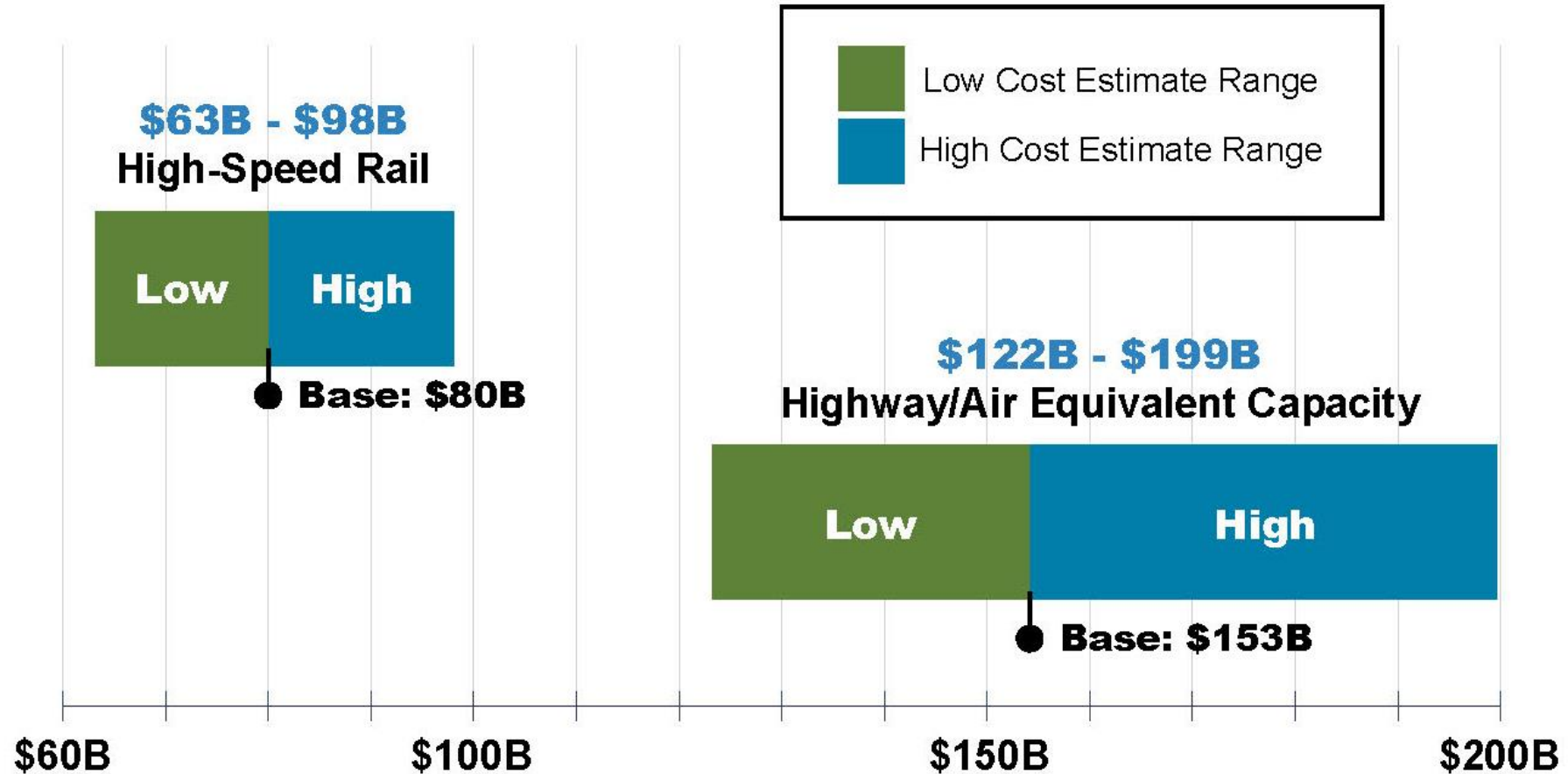
LEADERSHIP IN SUSTAINABILITY

- California is the national leader on clean transportation in the era of climate change
- Meeting our mobility, economic, and environmental goals
- More than \$6.4 Billion has been invested in planning and building high-speed rail



A GOOD INVESTMENT

- Cost of High-Speed Rail Phase 1 compared to cost of equivalent highway/air capacity



PROJECT PROGRESS

- Doubled rate of construction in the Central Valley
- 700 onsite construction workers per week
- NEPA assignment approved by FRA
- Preferred Alternatives identified for entire Phase 1 system
- Issued first Record of Decision in five years (Shafter to Bakersfield)
- Initiated procurement of track and systems with issuance of Request for Proposals



30 Active Construction Sites



3,500+ construction jobs generated



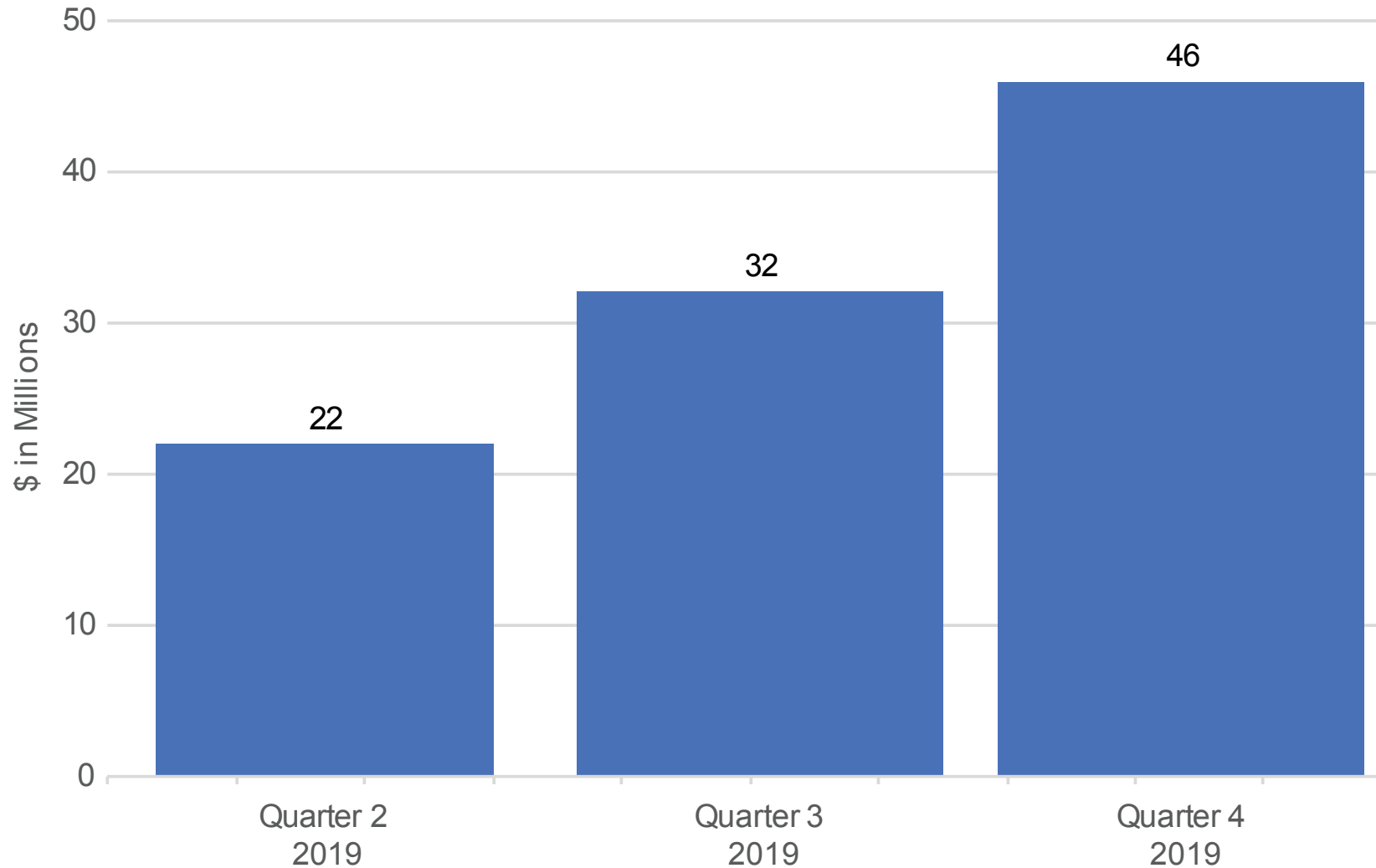
520+ small businesses engaged



[HTTPS://WWW.YOUTUBE.COM/WATCH?V=QFVQ7F_EC80&FEATURE=YOUTU.BE](https://www.youtube.com/watch?v=QFVQ7F_EC80&feature=youtu.be)

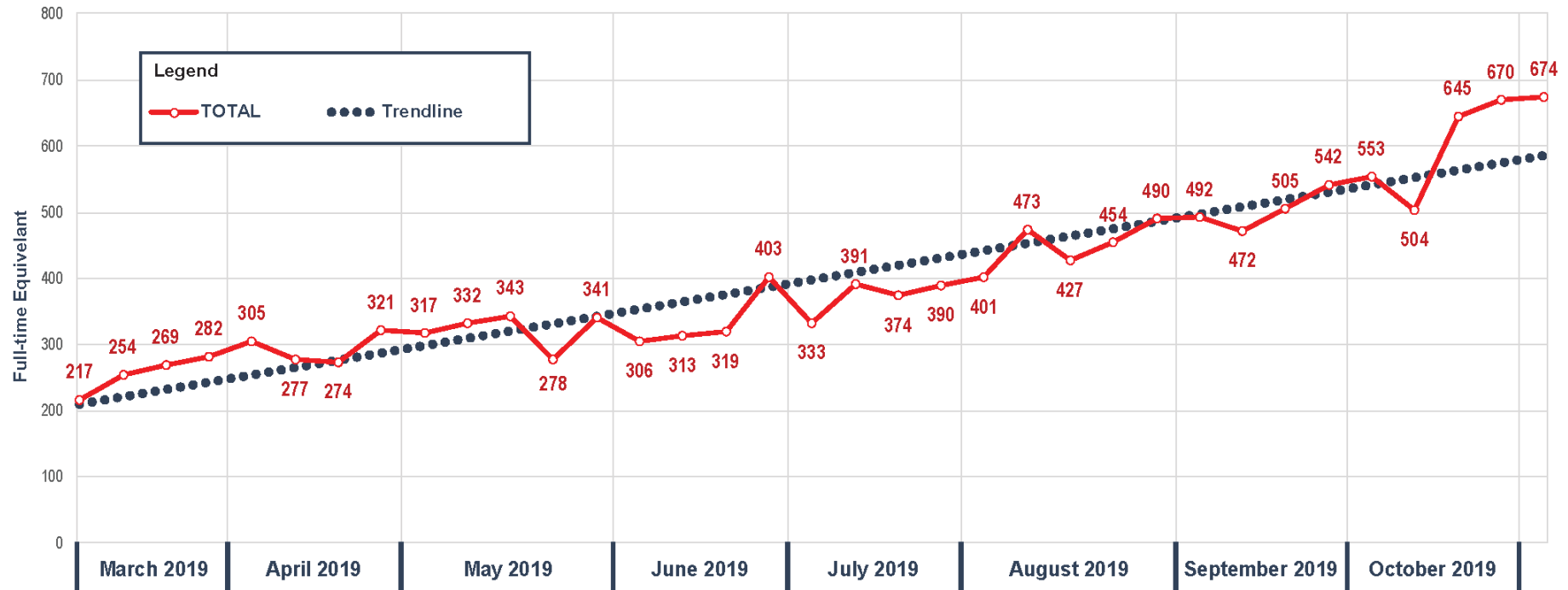
MOMENTUM PICKING UP IN THE FIELD

AVERAGE MONTHLY EXPENDITURES BY QUARTER



MOMENTUM PICKING UP IN THE FIELD

WEEKLY AVERAGE WORKERS DISPATCHED



PROJECT PROGRESS

- 700 onsite construction workers per week
- Doubled rate of construction in the Central Valley
- NEPA assignment approved by FRA
- Preferred Alternatives identified for entire Phase 1 system
- Issued first Record of Decision in five years (Shafter to Bakersfield)
- Initiated procurement of track and systems with issuance of Request for Proposals



30 Active Construction Sites



3,500+ construction jobs generated



520+ small businesses engaged

WHERE WE ARE IN 2020

- **350 miles of electrified high-speed rail on the way to or under construction**
 - » 171 miles between Merced and Bakersfield
 - » 51 miles of the Caltrain Corridor being electrified
 - » 130 miles connecting Las Vegas to Southern California
- **Remainder of Phase 1 (San Francisco to Los Angeles/Anaheim) environmental clearance underway**
 - » 5 Draft EIR/EIS documents planned in 2020



LOOKING AHEAD TO 2022

- **350 miles of high-speed rail under construction**
 - » First high-speed trains under development
- **Full Phase 1 environmental clearance complete**
 - » Advancing strategic investments
 - » Pursuing additional funding



WHY EXTEND TO BAKERSFIELD AND MERCED

171-MILE INTERIM SERVICE

- **Best value**

- » Expands train service
- » Reduces travel time
- » Increases ridership with lowered state operating costs

- **It's affordable**

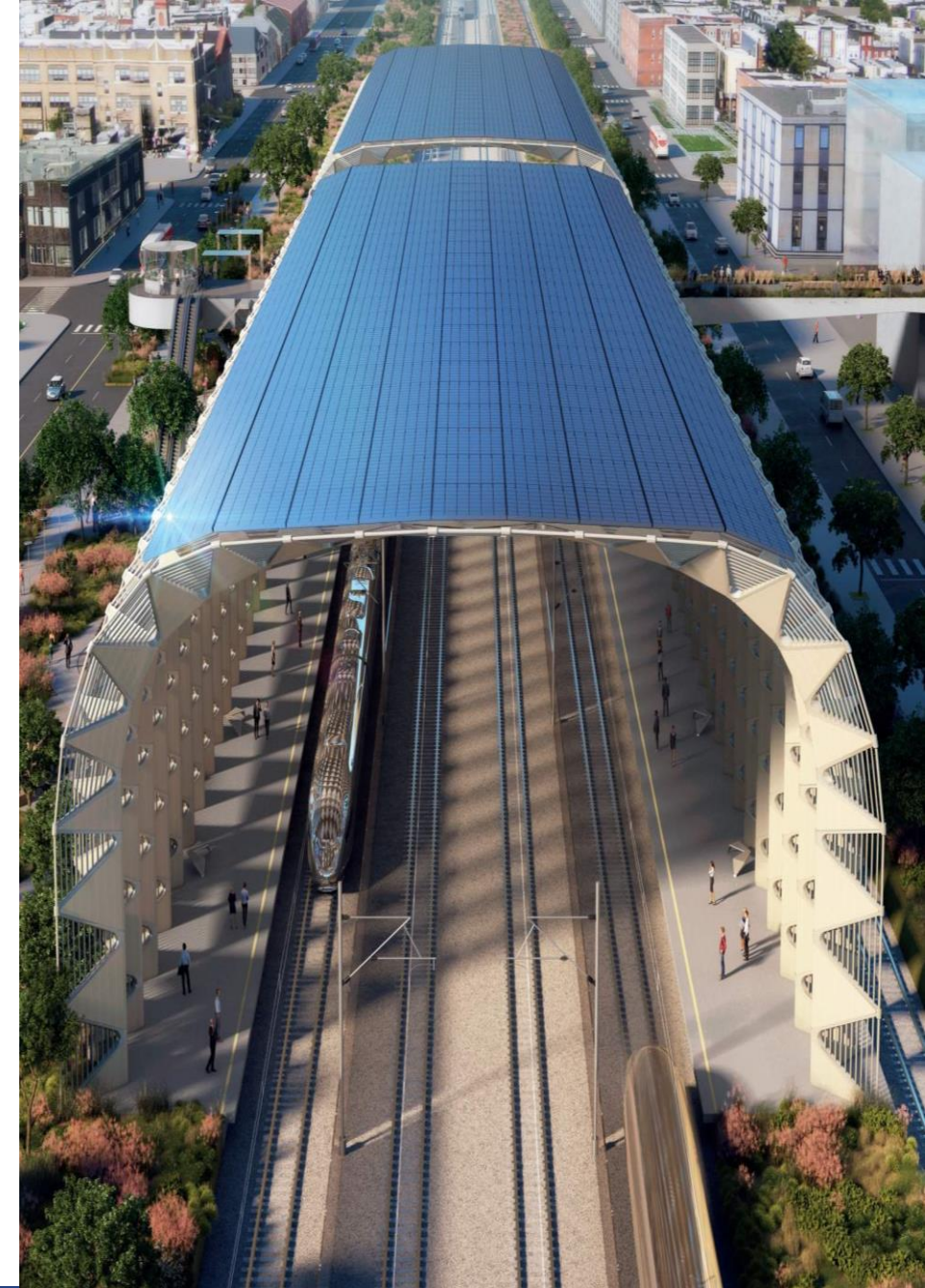
- » Cost of \$20.4 billion is within the \$20.6 billion and \$23.4 billion range budget

- **It connects three of the fastest growing counties of the state**

- » Merced, Fresno and Bakersfield

- **It provides for interim connection**

- » North into Bay Area and Sacramento via the San Joaquin and ACE service
- » South into LA Basin via bus connection



COSTS AND FUNDING

- Proposing to use funds available through 2030 to deliver initial line between Merced and Bakersfield
- Cost estimates still within ranges from the 2018 Business Plan
- Projected \$20.6 to \$23.4 billion in total funding available through 2030, based on Cap-and-Trade estimates



350 miles under development/construction



Full Phase 1 environmental clearance in 18-24 months



Over \$8 billion in economic output from investment to date

HIGH-SPEED RAIL CORRIDOR DEVELOPMENT ACT OF 2020

- **Proposed legislation by Rep. Jim Costa:**
 - » Authorize \$32 billion through 2024 of federal funding to projects in designated high-speed rail corridors
 - » Reauthorize the High-Speed Rail Corridor Development Program
 - » Build upon the Passenger Rail Investment and Improvement Act of 2008 and the American Recovery and Reinvestment Act
 - » Award grants to fund projects from the state rail plan
 - » Provide funding to complete construction of the full Phase I high-speed rail system from San Francisco to Los Angeles



HIGH-SPEED RAIL IN NORTHERN CALIFORNIA IN 2020

PROJECT DEVELOPMENT STAGES

Planning



**Diridon Integrated
Station Concept**

Environmental



**San Francisco to
Merced Corridor**

Pre-Construction



**Downtown
Extension (DTX)**

Construction



**Caltrain
Electrification**

Operations



**Salesforce
Transit Center**

LOOKING AHEAD IN NORTHERN CALIFORNIA

NEXT STEPS AFTER ENVIRONMENTAL CLEARANCE



**Completion of
Environmental
Clearance**



**Strategic Right-of-Way
Acquisitions**



Third-Party Agreements



**Preliminary Engineering for
Procurement**



Closure of Funding Gap

HOW TO COMMENT ON THE DRAFT 2020 BUSINESS PLAN

- **60-day public comment period: February 12 through April 12**
- **Online at: www.hsr.ca.gov/about/business_plans/business_plan_2020_comment_form.aspx**
- **By phone: 916-384-9516**
- **By email: DraftBP2020@hsr.ca.gov**
- **By mail:**
 - » California High-Speed Rail Authority
 - » Attn: Draft 2020 Business Plan
 - » 770 L Street, Suite 620, MS-1
 - » Sacramento, CA 95814
- **In Person:**
 - » Authority Board Meetings:
 - February 18, Sacramento, California Department of Food and Agriculture Headquarters
 - March 17, Los Angeles, LA Metro Headquarters
- **Board Adoption of Draft Business Plan**
 - April 21, Fresno, Location TBD

PREPARE FOR THE DRAFT EIR/EIS



WHAT IS THE PURPOSE OF THE EIR/EIS?

- **Program EIR/EIS selected Bay Area to Central Valley corridor in 2008-2012**
- **Project Section EIR/EIS:**
 - » Includes the **analysis of alternatives** (based on preliminary design), associated **impacts**, and proposed **mitigations** (measures to reduce significant effects)
 - » Intended to inform the public and agencies of potential consequences and the approach to mitigating consequences
- **Final EIR/EIS enables the Authority to approve the project and proceed to final design and construction**

The environmental review, consultation, and other actions required by applicable federal environmental laws for this project are being or have been carried out by the State of California pursuant to 23 U.S.C. 327 and a Memorandum of Understanding dated July 23, 2019 and executed by the Federal Railroad Administration and the State of California.

CEQA VS. NEPA

CEQA = California Environmental Quality Act

Local or state agency involvement (approval, funding, and/or permits)

Environmental Impact Report (EIR)

Physical environmental impacts; does not include economic or social effects

Mitigation measures, if feasible, must be adopted for significant adverse impacts

Identifies significant impacts on impact-by-impact basis

NEPA = National Environmental Policy Act

Federal action involved (approval, funding, and/or permits)

Environmental Impact Statement (EIS)

Environmental and socioeconomic effects


Mitigation measures must be considered but do not have to be adopted

Significant impact only considered on the basis of the entire project, not on an effect-by-effect basis

Unique Federal Requirements

- Environmental Justice
- Section 4(f)/6(f) evaluation re: park/open space and cultural resources

DEVELOPMENT & REVIEW OF ENVIRONMENTAL DOCUMENT

 = ongoing outreach



WHAT'S IN THE DRAFT EIR/EIS?

TABLE OF CONTENTS

- **Volume I: Executive Summary & Report/Statement**
 - » Executive Summary
 - » Chapter 1: Project Purpose, Need, and Objectives
 - » Chapter 2: Alternatives
 - » Chapter 3: Affected Environment, Environmental Consequences, and Mitigation Measures
 - » Chapter 4: Section 4(f)/6(f) Evaluation
 - » Chapter 5: Environmental Justice
 - » Chapter 6: Project Costs and Operations
 - » Chapter 7: Other CEQA/NEPA Considerations
 - » Chapter 8: Preferred Alternative
 - » Chapter 9: Public and Agency Involvement
 - » Supporting other Chapters
- **Volume II: Technical Appendices**
 - » Detailed data supporting environmental analysis
- **Volume III: Preliminary Design**
 - » Preliminary engineering design plans



WHAT SUBJECTS ARE REVIEWED IN THE DRAFT EIR/EIS?

VOLUME I, CHAPTER 3-6 TOPICS

- Aesthetics & Visual Quality
- Agricultural Lands
- Air Quality & Greenhouse Gases
- Biological & Aquatic Resources
- Capital & Operating Costs
- Cultural Resources
- Cumulative Impacts
- Design Variants to Optimize Speeds
- Electromagnetic Fields & Electromagnetic Interference
- Environmental Justice
- Geology, Soils, Seismicity & Paleontological Resources
- Hazardous Materials & Waste
- Hydrology & Water Resources
- Noise & Vibration
- Parks, Recreation & Open Space
- Public Utilities & Energy
- Regional Growth
- Safety & Security
- Section 4(f)/6(f) Evaluation
- Socioeconomics & Communities
- Station Planning, Land Use & Development
- Transportation

WHAT'S IN THE DRAFT EIR/EIS?

SECTION OUTLINE

• Section 3.X: Individual Resource Section

- » 3.X.1 Introduction
- » 3.X.2 Laws, Regulations, and Orders
- » 3.X.3 Consistency with Plans and Laws
- » 3.X.4 Methods for Evaluating Impacts
- » 3.X.5 Affected Environment
- » 3.X.6 Environmental Consequences
- » 3.X.7 Mitigation Measures
- » 3.X.8 Impact Summary for NEPA Comparison of Alternatives
- » 3.X.9 CEQA Significance Conclusions



HOW TO ACCESS THE DOCUMENT



- **Printed copies will be available for review during regular business hours:**

- » CHSRA Northern California Regional Office: 100 Paseo de San Antonio, Suite 300, San Jose, CA 95113
- » CHSRA Headquarters: 770 L Street, Suite 620, Sacramento, CA 95814



- **The Draft EIR/EIS will be available on the Authority website ([hsr.ca.gov](https://www.hsr.ca.gov)) to view or download. Electronic copies of the Draft EIR/EIS and technical reports are available upon request.**



- **Copies will also be available at these locations:**

- » Santa Clara Library, Central Park Branch
- » Dr. Martin Luther King, Jr. Library (San Jose)
- » Gilroy Library
- » Merced County Library, Los Banos Branch
- » Merced County Library, Merced Branch
- » Morgan Hill Library
- » Merced County Clerk
- » San Benito County Recorder

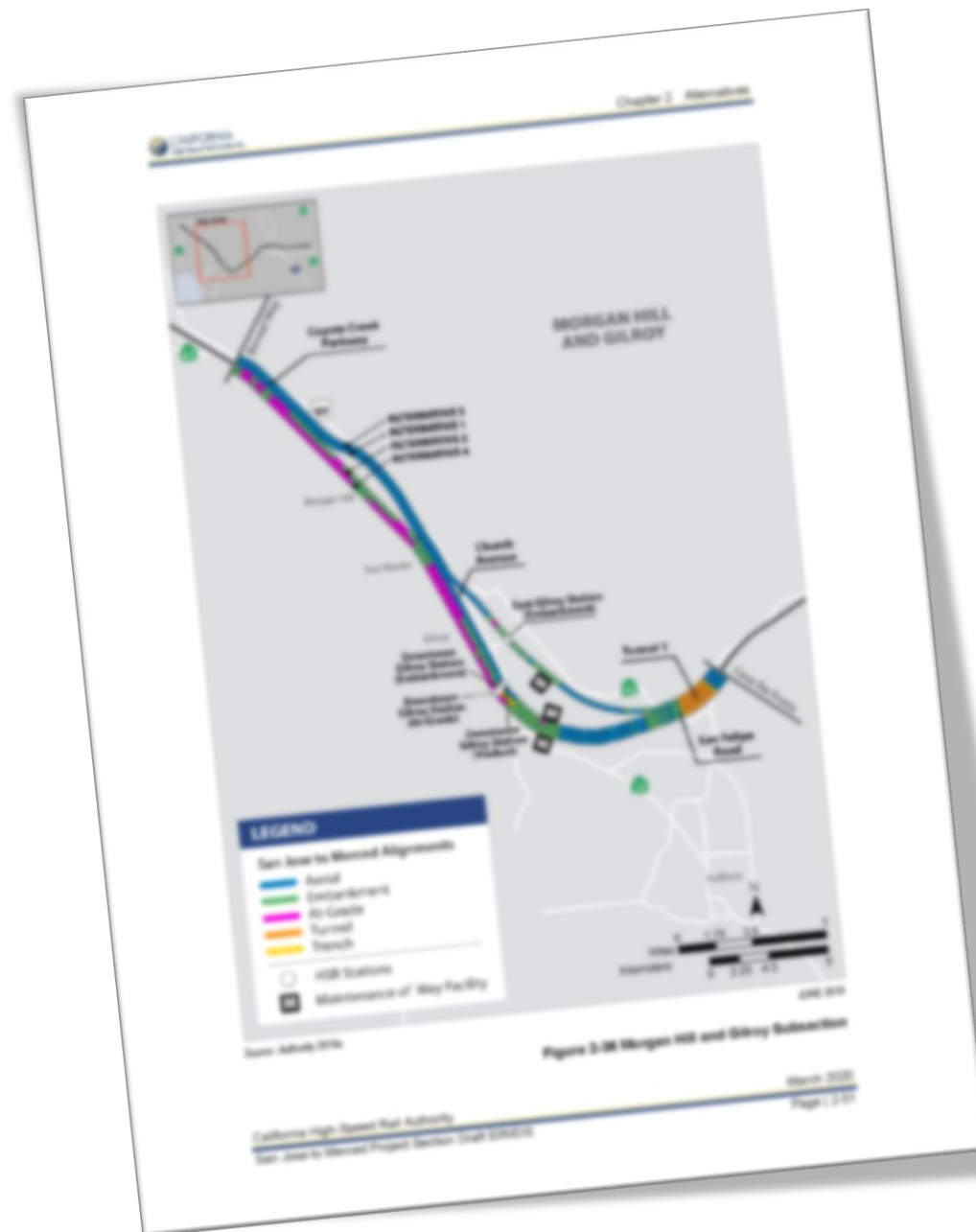
NAVIGATING THE DRAFT EIR/EIS

- How do I find information about impacts to my community?
 - » Throughout Volume I, Chapter 3 of the document
 - » Impact analysis usually disclosed by the following project subsections:
 - San Jose Diridon Approach
 - Monterey Corridor
 - Morgan Hill to Gilroy
 - Pacheco Pass
 - San Joaquin Valley



NAVIGATING THE DRAFT EIR/EIS

- **Where do I find maps of the alternatives?**
 - » Volume I, Chapter 2, Alternatives – General Maps
 - » Volume II, Appendix 3.01-A – Maps of Affected Properties
 - » Volume III – Preliminary Engineering Design Plans



NAVIGATING THE DRAFT EIR/EIS

VOLUME III USER GUIDE

Volume III User Guide

Volume III of the Environmental Impact Report/Environmental Impact Statement (EIR/EIS) provides a series of engineering drawings, figures, and tables for the four project alternatives for the San Jose to Merced Section. It presents preliminary design information showing alignment, primary features, anticipated right-of-way requirements and temporary construction easement details in support of the proposed high-speed rail project.

Volume III is a required part of the EIR/EIS document. It delineates the extent of the work proposed in the EIR/EIS. It also provides a useful tool for stakeholders who want to understand potential property, visual, and circulation impacts of the four project alternatives.

Organization of Volume III

Volume III has been split into several books for readability and navigation. Each book begins with an index of drawings included in that book, and an associated key map. The General Information Book has the full index of drawings while each Project Alternative Book only includes the index for that book.

General Information Book

The Volume III General Information Book provides the index of drawings, the key maps, and several general elements including notes, a glossary of abbreviations, wildlife crossing details, systems information, the plan for quad grids (at-grade crossings where traffic lanes in both directions are protected by safety gates), and typical sections. It provides information that is common to the four alternatives.

Project Alternative Books

In addition to the General Information Book, detailed Volume III books are available for each project alternative. Contents of Project Alternative Books

- The following information is included in the Project Alternative Books:
 - Composite Plan, Profile, and Cross Sections:** Engineering drawings of the corridor and detailed plans that show the rail design and effects on adjacent rights-of-way and properties.
 - Stations:** Illustrations of the planned stations, showing tracks, station platforms, parking lots, transit facilities, and station design elements. Includes tables describing each station program.
 - Structures:** Plan and section drawings of underpasses, overpasses, viaducts, and tunnels.
 - Roadways:** Plan drawings showing where streets and roads are closed, added, redirected, extended, or where grade separations are applied at the rail alignment.
 - Maintenance of Way:** Drawings that illustrate the design of the planned maintenance-of-way facility, where track maintenance would be staged.
 - Tunnel:** Drawings showing the design and elevations of the Pacheco Pass tunnel, an element of all four Project Alternatives.
 - Construction Staging:** Engineering plans for detours, temporary structures, temporary roadways, and road-way closures at specific locations where these temporary measures are necessary during construction.
 - Alignment Data Table:** Design information about track guideway curves and geometry, train design speeds, superelevations, and track stationing.

List of Project Alternative Books

- Each set of Project Alternative Books is labeled based on the project alternative number, as listed below:
- Alternative 1 Books**
 - 1A Composite Plan, Profile, and Cross Sections
 - 1B Composite Plan, Profile, Cross Sections, Stations, and Structures
 - 1C Roadways, Maintenance of Way, and Tunnels
 - 1D Construction Staging and Alignment Data Tables
 - Alternative 2 Books**
 - 2A Composite Plan, Profile, and Cross Sections
 - 2B Composite Plan, Profile, Cross Sections, Stations, and Structures
 - 2C Roadways, Maintenance of Way, and Tunnels
 - 2D Roadways, Maintenance of Way, and Tunnels
 - 2E Construction Staging and Alignment Data Tables
 - Alternative 3 Books**
 - 3A Composite Plan, Profile, and Cross Sections
 - 3B Composite Plan, Profile, Cross Sections, and Stations
 - 3C Structures and Roadways
 - 3D Roadways, Maintenance of Way, and Tunnels
 - 3E Construction Staging
 - 3F Alignment Data Tables
 - Alternative 4 Books**
 - 4A Composite Plan, Profile, and Cross Sections
 - 4B Composite Plan, Profile, and Cross Sections
 - 4C Stations
 - 4D Structures, Roadways, and Maintenance of Way
 - 4E Tunnels, Construction Staging, and Alignment Data Tables

Because some alternatives have more books and others have fewer, information may not be in the same books across alternatives. For example, information on structures is in Books 1B, 2B, 3C, and 4D.

How to Find a Property in Volume III

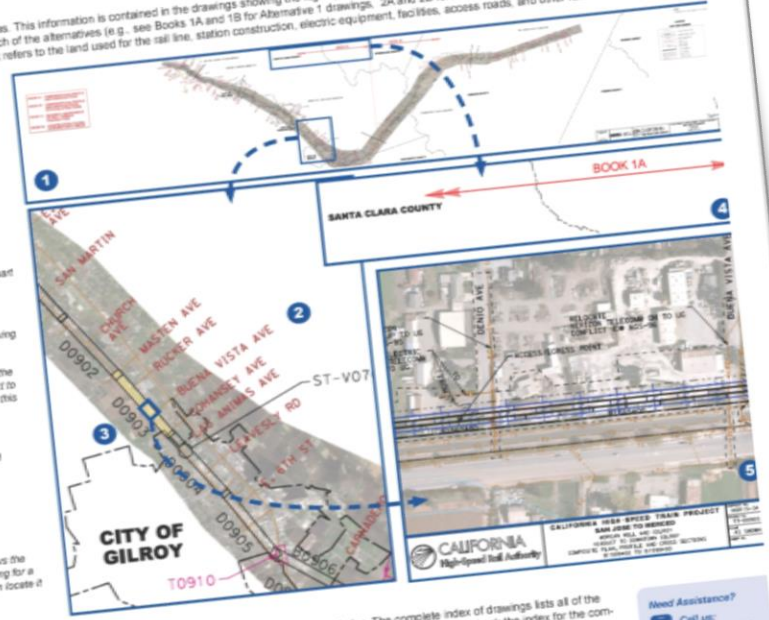
You can use Volume III to identify impacts that project alternatives may have on specific areas. This information is contained in the drawings showing the high-speed rail project alternative alignments, which are shown in Composite Plan, Profile, and Cross Sections. These drawings are in Volume III Books A and B for each of the alternatives (e.g., see Books 1A and 1B for Alternative 1 drawings, 2A and 2B for Alternative 2 drawings, etc.). The composite plans include technical drawings to illustrate high-speed rail's design and its footprint (the footprint refers to the land used for the rail line, station construction, electric equipment, facilities, access roads, and other rail amenities).

The Key Map

The Key Map orients users to identify specific drawings along the corridor. Key Maps for all four project alternatives are shown in the Volume III General Information Book on the four sheets immediately following the Index.

To find a property adjacent to a high-speed rail alignment alternative

- Check the Key Map**
The Key Map illustrates the drawing numbers for all of the detailed engineering drawings.
- Look for the City and Cross Streets**
On the Key Map, find cross streets and other landmarks to help you locate the part of the map where you want to take a closer look.
- Find the Drawing Number**
Each narrow rectangle represents the boundary of a detailed engineering drawing and is labeled with a unique drawing number.
For example, the narrow rectangle highlighted in yellow shows the section of the rail alignment between Masten Ave. and Cohasset Ave. D0902, the label next to this rectangle, means drawing number TT-D0902 is the technical drawing for this area (Note: the Key Map omits the "TT" on the drawing number reference).
- Locate the Book Number**
The red arrow at the top of the Key Map shows where you'll find the detailed engineering drawing you seek.
If you want to see drawing TT-D0902, you'll find it in Book 1A.
- Go to the Engineering Drawing**
Find each detailed engineering drawing on its own page.
Open Book 1A and turn to drawing TT-D0902. This detailed drawing shows the entire section between Masten Ave. and Cohasset Ave. If you're searching for the property impacted by the project footprint near Buena Vista Ave., you can locate it by finding Buena Vista Ave. on the engineering drawing.



The Index

Each book begins with an index of drawings included in that book, and an associated key map. The General Information book includes a complete index. After finding a property on the Key Map, you can check the index for the complete index of drawings lists all of the pages (called "sheets") in numerical order. The different columns show the boundary or information available on each page. The sheet description refers to the type of information presented on the sheet and the additional description typically describes the station layout.

BOOK AND SHEET NUMBER	DATE	DESCRIPTION	GEOGRAPHIC COORDINATE OR FOOTPRINT	ALIGNMENT OR FEATURE	SHEET DESCRIPTION	ADDITIONAL DESCRIPTION
COVER, INDEX OF DRAWING AND KEY MAPS						
BOOK 1A	A	COVER	SAN JOSE TO MERCED SECTION	ALIGNMENT	COVER SHEET	
BOOK 1A	B	INDEX	SAN JOSE TO MERCED SECTION APPROACH	ALIGNMENT	INDEX OF DRAWINGS	
BOOK 1A	C	GENERAL	MERCED TO SAN JOSE SECTION APPROACH	ALIGNMENT	GENERAL	
BOOK 1A	D	GENERAL	MERCED TO SAN JOSE SECTION APPROACH	ALIGNMENT	GENERAL	
COMPOSITE PLANS						
BOOK 1A	A	11-01-01	SAN JOSE DIVISION STATION APPROACH	ALIGNMENT	COMPOSITE PLAN, PROFILE AND CROSS SECTION	11-01-01 TO 11-01-01
BOOK 1A	B	11-01-02	SAN JOSE DIVISION STATION APPROACH	ALIGNMENT	COMPOSITE PLAN, PROFILE AND CROSS SECTION	11-01-02 TO 11-01-02
BOOK 1A	C	11-01-03	SAN JOSE DIVISION STATION APPROACH	ALIGNMENT	COMPOSITE PLAN, PROFILE AND CROSS SECTION	11-01-03 TO 11-01-03
BOOK 1A	D	11-01-04	SAN JOSE DIVISION STATION APPROACH	ALIGNMENT	COMPOSITE PLAN, PROFILE AND CROSS SECTION	11-01-04 TO 11-01-04
BOOK 1A	E	11-01-05	SAN JOSE DIVISION STATION APPROACH	ALIGNMENT	COMPOSITE PLAN, PROFILE AND CROSS SECTION	11-01-05 TO 11-01-05
BOOK 1A	F	11-01-06	SAN JOSE DIVISION STATION APPROACH	ALIGNMENT	COMPOSITE PLAN, PROFILE AND CROSS SECTION	11-01-06 TO 11-01-06
BOOK 1A	G	11-01-07	SAN JOSE DIVISION STATION APPROACH	ALIGNMENT	COMPOSITE PLAN, PROFILE AND CROSS SECTION	11-01-07 TO 11-01-07
BOOK 1A	H	11-01-08	SAN JOSE DIVISION STATION APPROACH	ALIGNMENT	COMPOSITE PLAN, PROFILE AND CROSS SECTION	11-01-08 TO 11-01-08
BOOK 1A	I	11-01-09	SAN JOSE DIVISION STATION APPROACH	ALIGNMENT	COMPOSITE PLAN, PROFILE AND CROSS SECTION	11-01-09 TO 11-01-09
BOOK 1A	J	11-01-10	SAN JOSE DIVISION STATION APPROACH	ALIGNMENT	COMPOSITE PLAN, PROFILE AND CROSS SECTION	11-01-10 TO 11-01-10
BOOK 1A	K	11-01-11	SAN JOSE DIVISION STATION APPROACH	ALIGNMENT	COMPOSITE PLAN, PROFILE AND CROSS SECTION	11-01-11 TO 11-01-11
BOOK 1A	L	11-01-12	SAN JOSE DIVISION STATION APPROACH	ALIGNMENT	COMPOSITE PLAN, PROFILE AND CROSS SECTION	11-01-12 TO 11-01-12
BOOK 1A	M	11-01-13	SAN JOSE DIVISION STATION APPROACH	ALIGNMENT	COMPOSITE PLAN, PROFILE AND CROSS SECTION	11-01-13 TO 11-01-13
BOOK 1A	N	11-01-14	SAN JOSE DIVISION STATION APPROACH	ALIGNMENT	COMPOSITE PLAN, PROFILE AND CROSS SECTION	11-01-14 TO 11-01-14
BOOK 1A	O	11-01-15	SAN JOSE DIVISION STATION APPROACH	ALIGNMENT	COMPOSITE PLAN, PROFILE AND CROSS SECTION	11-01-15 TO 11-01-15
BOOK 1A	P	11-01-16	SAN JOSE DIVISION STATION APPROACH	ALIGNMENT	COMPOSITE PLAN, PROFILE AND CROSS SECTION	11-01-16 TO 11-01-16
BOOK 1A	Q	11-01-17	SAN JOSE DIVISION STATION APPROACH	ALIGNMENT	COMPOSITE PLAN, PROFILE AND CROSS SECTION	11-01-17 TO 11-01-17
BOOK 1A	R	11-01-18	SAN JOSE DIVISION STATION APPROACH	ALIGNMENT	COMPOSITE PLAN, PROFILE AND CROSS SECTION	11-01-18 TO 11-01-18
BOOK 1A	S	11-01-19	SAN JOSE DIVISION STATION APPROACH	ALIGNMENT	COMPOSITE PLAN, PROFILE AND CROSS SECTION	11-01-19 TO 11-01-19
BOOK 1A	T	11-01-20	SAN JOSE DIVISION STATION APPROACH	ALIGNMENT	COMPOSITE PLAN, PROFILE AND CROSS SECTION	11-01-20 TO 11-01-20
BOOK 1A	U	11-01-21	SAN JOSE DIVISION STATION APPROACH	ALIGNMENT	COMPOSITE PLAN, PROFILE AND CROSS SECTION	11-01-21 TO 11-01-21
BOOK 1A	V	11-01-22	SAN JOSE DIVISION STATION APPROACH	ALIGNMENT	COMPOSITE PLAN, PROFILE AND CROSS SECTION	11-01-22 TO 11-01-22
BOOK 1A	W	11-01-23	SAN JOSE DIVISION STATION APPROACH	ALIGNMENT	COMPOSITE PLAN, PROFILE AND CROSS SECTION	11-01-23 TO 11-01-23
BOOK 1A	X	11-01-24	SAN JOSE DIVISION STATION APPROACH	ALIGNMENT	COMPOSITE PLAN, PROFILE AND CROSS SECTION	11-01-24 TO 11-01-24
BOOK 1A	Y	11-01-25	SAN JOSE DIVISION STATION APPROACH	ALIGNMENT	COMPOSITE PLAN, PROFILE AND CROSS SECTION	11-01-25 TO 11-01-25
BOOK 1A	Z	11-01-26	SAN JOSE DIVISION STATION APPROACH	ALIGNMENT	COMPOSITE PLAN, PROFILE AND CROSS SECTION	11-01-26 TO 11-01-26
BOOK 1A	AA	11-01-27	SAN JOSE DIVISION STATION APPROACH	ALIGNMENT	COMPOSITE PLAN, PROFILE AND CROSS SECTION	11-01-27 TO 11-01-27
BOOK 1A	AB	11-01-28	SAN JOSE DIVISION STATION APPROACH	ALIGNMENT	COMPOSITE PLAN, PROFILE AND CROSS SECTION	11-01-28 TO 11-01-28
BOOK 1A	AC	11-01-29	SAN JOSE DIVISION STATION APPROACH	ALIGNMENT	COMPOSITE PLAN, PROFILE AND CROSS SECTION	11-01-29 TO 11-01-29
BOOK 1A	AD	11-01-30	SAN JOSE DIVISION STATION APPROACH	ALIGNMENT	COMPOSITE PLAN, PROFILE AND CROSS SECTION	11-01-30 TO 11-01-30
BOOK 1A	AE	11-01-31	SAN JOSE DIVISION STATION APPROACH	ALIGNMENT	COMPOSITE PLAN, PROFILE AND CROSS SECTION	11-01-31 TO 11-01-31
BOOK 1A	AF	11-01-32	SAN JOSE DIVISION STATION APPROACH	ALIGNMENT	COMPOSITE PLAN, PROFILE AND CROSS SECTION	11-01-32 TO 11-01-32
BOOK 1A	AG	11-01-33	SAN JOSE DIVISION STATION APPROACH	ALIGNMENT	COMPOSITE PLAN, PROFILE AND CROSS SECTION	11-01-33 TO 11-01-33
BOOK 1A	AH	11-01-34	SAN JOSE DIVISION STATION APPROACH	ALIGNMENT	COMPOSITE PLAN, PROFILE AND CROSS SECTION	11-01-34 TO 11-01-34
BOOK 1A	AI	11-01-35	SAN JOSE DIVISION STATION APPROACH	ALIGNMENT	COMPOSITE PLAN, PROFILE AND CROSS SECTION	11-01-35 TO 11-01-35
BOOK 1A	AJ	11-01-36	SAN JOSE DIVISION STATION APPROACH	ALIGNMENT	COMPOSITE PLAN, PROFILE AND CROSS SECTION	11-01-36 TO 11-01-36
BOOK 1A	AK	11-01-37	SAN JOSE DIVISION STATION APPROACH	ALIGNMENT	COMPOSITE PLAN, PROFILE AND CROSS SECTION	11-01-37 TO 11-01-37
BOOK 1A	AL	11-01-38	SAN JOSE DIVISION STATION APPROACH	ALIGNMENT	COMPOSITE PLAN, PROFILE AND CROSS SECTION	11-01-38 TO 11-01-38
BOOK 1A	AM	11-01-39	SAN JOSE DIVISION STATION APPROACH	ALIGNMENT	COMPOSITE PLAN, PROFILE AND CROSS SECTION	11-01-39 TO 11-01-39
BOOK 1A	AN	11-01-40	SAN JOSE DIVISION STATION APPROACH	ALIGNMENT	COMPOSITE PLAN, PROFILE AND CROSS SECTION	11-01-40 TO 11-01-40
BOOK 1A	AO	11-01-41	SAN JOSE DIVISION STATION APPROACH	ALIGNMENT	COMPOSITE PLAN, PROFILE AND CROSS SECTION	11-01-41 TO 11-01-41
BOOK 1A	AP	11-01-42	SAN JOSE DIVISION STATION APPROACH	ALIGNMENT	COMPOSITE PLAN, PROFILE AND CROSS SECTION	11-01-42 TO 11-01-42
BOOK 1A	AQ	11-01-43	SAN JOSE DIVISION STATION APPROACH	ALIGNMENT	COMPOSITE PLAN, PROFILE AND CROSS SECTION	11-01-43 TO 11-01-43
BOOK 1A	AR	11-01-44	SAN JOSE DIVISION STATION APPROACH	ALIGNMENT	COMPOSITE PLAN, PROFILE AND CROSS SECTION	11-01-44 TO 11-01-44
BOOK 1A	AS	11-01-45	SAN JOSE DIVISION STATION APPROACH	ALIGNMENT	COMPOSITE PLAN, PROFILE AND CROSS SECTION	11-01-45 TO 11-01-45
BOOK 1A	AT	11-01-46	SAN JOSE DIVISION STATION APPROACH	ALIGNMENT	COMPOSITE PLAN, PROFILE AND CROSS SECTION	11-01-46 TO 11-01-46
BOOK 1A	AU	11-01-47	SAN JOSE DIVISION STATION APPROACH	ALIGNMENT	COMPOSITE PLAN, PROFILE AND CROSS SECTION	11-01-47 TO 11-01-47
BOOK 1A	AV	11-01-48	SAN JOSE DIVISION STATION APPROACH	ALIGNMENT	COMPOSITE PLAN, PROFILE AND CROSS SECTION	11-01-48 TO 11-01-48
BOOK 1A	AW	11-01-49	SAN JOSE DIVISION STATION APPROACH	ALIGNMENT	COMPOSITE PLAN, PROFILE AND CROSS SECTION	11-01-49 TO 11-01-49
BOOK 1A	AX	11-01-50	SAN JOSE DIVISION STATION APPROACH	ALIGNMENT	COMPOSITE PLAN, PROFILE AND CROSS SECTION	11-01-50 TO 11-01-50
BOOK 1A	AY	11-01-51	SAN JOSE DIVISION STATION APPROACH	ALIGNMENT	COMPOSITE PLAN, PROFILE AND CROSS SECTION	11-01-51 TO 11-01-51
BOOK 1A	AZ	11-01-52	SAN JOSE DIVISION STATION APPROACH	ALIGNMENT	COMPOSITE PLAN, PROFILE AND CROSS SECTION	11-01-52 TO 11-01-52
BOOK 1A	BA	11-01-53	SAN JOSE DIVISION STATION APPROACH	ALIGNMENT	COMPOSITE PLAN, PROFILE AND CROSS SECTION	11-01-53 TO 11-01-53
BOOK 1A	BB	11-01-54	SAN JOSE DIVISION STATION APPROACH	ALIGNMENT	COMPOSITE PLAN, PROFILE AND CROSS SECTION	11-01-54 TO 11-01-54
BOOK 1A	BC	11-01-55	SAN JOSE DIVISION STATION APPROACH	ALIGNMENT	COMPOSITE PLAN, PROFILE AND CROSS SECTION	11-01-55 TO 11-01-55
BOOK 1A	BD	11-01-56	SAN JOSE DIVISION STATION APPROACH	ALIGNMENT	COMPOSITE PLAN, PROFILE AND CROSS SECTION	11-01-56 TO 11-01-56
BOOK 1A	BE	11-01-57	SAN JOSE DIVISION STATION APPROACH	ALIGNMENT	COMPOSITE PLAN, PROFILE AND CROSS SECTION	11-01-57 TO 11-01-57
BOOK 1A	BF	11-01-58	SAN JOSE DIVISION STATION APPROACH	ALIGNMENT	COMPOSITE PLAN, PROFILE AND CROSS SECTION	11-01-58 TO 11-01-58
BOOK 1A	BG	11-01-59	SAN JOSE DIVISION STATION APPROACH	ALIGNMENT	COMPOSITE PLAN, PROFILE AND CROSS SECTION	11-01-59 TO 11-01-59
BOOK 1A	BH	11-01-60	SAN JOSE DIVISION STATION APPROACH	ALIGNMENT	COMPOSITE PLAN, PROFILE AND CROSS SECTION	11-01-60 TO 11-01-60
BOOK 1A	BI	11-01-61	SAN JOSE DIVISION STATION APPROACH	ALIGNMENT	COMPOSITE PLAN, PROFILE AND CROSS SECTION	11-01-61 TO 11-01-61
BOOK 1A	BJ	11-01-62	SAN JOSE DIVISION STATION APPROACH	ALIGNMENT	COMPOSITE PLAN, PROFILE AND CROSS SECTION	11-01-62 TO 11-01-62
BOOK 1A	BK	11-01-63	SAN JOSE DIVISION STATION APPROACH	ALIGNMENT	COMPOSITE PLAN, PROFILE AND CROSS SECTION	11-01-63 TO 11-01-63
BOOK 1A	BL	11-01-64	SAN JOSE DIVISION STATION APPROACH	ALIGNMENT	COMPOSITE PLAN, PROFILE AND CROSS SECTION	11-01-64 TO 11-01-64
BOOK 1A	BM	11-01-65	SAN JOSE DIVISION STATION APPROACH	ALIGNMENT	COMPOSITE PLAN, PROFILE AND CROSS SECTION	11-01-65 TO 11-01-65
BOOK 1A	BN	11-01-66	SAN JOSE DIVISION STATION APPROACH	ALIGNMENT	COMPOSITE PLAN, PROFILE AND CROSS SECTION	11-01-66 TO 11-01-66
BOOK 1A	BO	11-01-67	SAN JOSE DIVISION STATION APPROACH	ALIGNMENT	COMPOSITE PLAN, PROFILE AND CROSS SECTION	11-01-67 TO 11-01-67
BOOK 1A	BP	11-01-68	SAN JOSE DIVISION STATION APPROACH	ALIGNMENT	COMPOSITE PLAN, PROFILE AND CROSS SECTION	11-01-68 TO 11-01-68
BOOK 1A	BQ	11-01-69	SAN JOSE DIVISION STATION APPROACH	ALIGNMENT	COMPOSITE PLAN, PROFILE AND CROSS SECTION	11-01-69 TO 11-01-69
BOOK 1A	BR	11-01-70	SAN JOSE DIVISION STATION APPROACH	ALIGNMENT	COMPOSITE PLAN, PROFILE AND CROSS SECTION	11-01-70 TO 11-01-70
BOOK 1A	BS	11-01-71	SAN JOSE DIVISION STATION APPROACH	ALIGNMENT	COMPOSITE PLAN, PROFILE AND CROSS SECTION	11-01-71 TO 11-01-71
BOOK 1A	BT	11-01-72	SAN JOSE DIVISION STATION APPROACH	ALIGNMENT	COMPOSITE PLAN, PROFILE AND CROSS SECTION	11-01-72 TO 11-01-72
BOOK 1A	BU	11-01-73	SAN JOSE DIVISION STATION APPROACH	ALIGNMENT	COMPOSITE PLAN, PROFILE AND CROSS SECTION	11-01-73 TO 11-01-73
BOOK 1A	BV	11-01-74	SAN JOSE DIVISION STATION APPROACH	ALIGNMENT	COMPOSITE PLAN, PROFILE AND CROSS SECTION	11-01-74 TO 11-01-74
BOOK 1A	BW	11-01-75	SAN JOSE DIVISION STATION APPROACH	ALIGNMENT	COMPOSITE PLAN, PROFILE AND CROSS SECTION	11-01-75 TO 11-01-75
BOOK 1A	BX	11-01-76	SAN JOSE DIVISION STATION APPROACH	ALIGNMENT	COMPOSITE PLAN, PROFILE AND CROSS SECTION	11-01-76 TO 11-01-76
BOOK 1A	BY	11-01-77	SAN JOSE DIVISION STATION APPROACH	ALIGNMENT	COMPOSITE PLAN, PROFILE AND CROSS SECTION	11-01-77 TO 11-01-77
BOOK 1A	BZ	11-01-78	SAN JOSE DIVISION STATION APPROACH	ALIGNMENT	COMPOSITE PLAN, PROFILE AND CROSS SECTION	11-01-78 TO 11-01-78
BOOK 1A	CA	11-01-79	SAN JOSE DIVISION STATION APPROACH	ALIGNMENT	COMPOSITE PLAN, PROFILE AND CROSS SECTION	11-01-79 TO 11-01-79
BOOK 1A	CB	11-01-80	SAN JOSE DIVISION STATION APPROACH	ALIGNMENT	COMPOSITE PLAN, PROFILE AND CROSS SECTION	11-01-80 TO 11-01-80
BOOK 1A	CC	11-01-81	SAN JOSE DIVISION STATION APPROACH	ALIGNMENT	COMPOSITE PLAN, PROFILE AND CROSS SECTION	11-01-81 TO 11-01-81
BOOK 1A	CD	11-01-82	SAN JOSE DIVISION STATION APPROACH	ALIGNMENT	COMPOSITE PLAN, PROFILE AND CROSS SECTION	11-01-82 TO 11-01-82
BOOK 1A	CE	11-01-83	SAN JOSE DIVISION STATION APPROACH	ALIGNMENT	COMPOSITE PLAN, PROFILE AND CROSS SECTION	11-01-83 TO 11-01-83
BOOK 1A	CF	11-01-84	SAN JOSE DIVISION STATION APPROACH	ALIGNMENT	COMPOSITE PLAN, PROFILE AND CROSS SECTION	11-01-84 TO 11-01-84
BOOK 1A	CG	11-01-85	SAN JOSE DIVISION STATION APPROACH	ALIGNMENT	COMPOSITE PLAN, PROFILE AND CROSS SECTION	11-01-85 TO 11-01-85
BOOK 1A	CH	11-01-86	SAN JOSE DIVISION STATION APPROACH	ALIGNMENT	COMPOSITE PLAN, PROFILE AND CROSS SECTION	11-01-86 TO 11-01-86
BOOK 1A	CI	11-01-87	SAN JOSE DIVISION STATION APPROACH	ALIGNMENT	COMPOSITE PLAN, PROFILE AND CROSS SECTION	11-01-87 TO 11-01-87
BOOK 1A	CJ	11-01-88	SAN JOSE DIVISION STATION APPROACH	ALIGNMENT	COMPOSITE PLAN, PROFILE AND CROSS SECTION	11-01-88 TO 11-01-88
BOOK 1A	CK	11-01-89	SAN JOSE DIVISION STATION APPROACH	ALIGNMENT	COMPOSITE PLAN, PROFILE AND CROSS SECTION	11-01-89 TO 11-01-89
BOOK 1A	CL	11-01-90	SAN JOSE DIVISION STATION APPROACH	ALIGNMENT	COMPOSITE PLAN, PROFILE AND CROSS SECTION	11-01-90 TO 11-01-90
BOOK 1A	CM	11-01-91	SAN JOSE DIVISION STATION APPROACH	ALIGNMENT	COMPOSITE PLAN, PROFILE AND CROSS SECTION	11-01-91 TO 11-01-91
BOOK 1A	CN	11-01-92	SAN JOSE DIVISION STATION APPROACH	ALIGNMENT	COMPOSITE PLAN, PROFILE AND CROSS SECTION	11-01-92 TO 11-01-92
BOOK 1A	CO	11-01-93	SAN JOSE DIVISION STATION APPROACH	ALIGNMENT</		

NAVIGATING THE DRAFT EIR/EIS

- Where do I find visual simulations of the alternatives?
 - » Volume I, Chapter 3, Section 3.16, Aesthetics and Visual Quality



HOW TO PROVIDE EFFECTIVE COMMENTS

- **Comments will be accepted as follows:**
 - » Written comments will be accepted by email, mail, and submission at open houses, public hearing, and CHSRA offices
 - » Verbal comments will be accepted at the public hearing
- **Comments will be responded to in the Final EIR/EIS**
- **Include specific details about your concerns**
- **Numbering comments is helpful**
- **Submit individually or with a group**



HOW TO SUBMIT COMMENTS



- **April 24, 2020 to June 8, 2020***



- **By Email**

» san.jose_merced@hsr.ca.gov



- **By Mail**

» Attn: San Jose to Merced Project Section: Draft EIR/EIS, 100 Paseo de San Antonio, Suite 300, San Jose, CA 95113



- **In Person**

- » Open Houses in San Jose, Gilroy, and Los Banos – Written comments or comment cards only
- » Public Hearing in San Jose – Verbal comments, written comments, or comment cards
- » Northern California Regional Office (9 am – 4 pm) – Written comments only

**Dates are tentative and subject to change.*

OUTREACH UPDATE



CWG SURVEY RESPONSES

• 32 respondents 

• 31% response rate 

• Average of 5.4 minutes 

CWG SURVEY RESULTS



• Community Meeting Preferences

» Format

- In-person Q&A panel at a local community meeting
- Small, informal gathering in my community

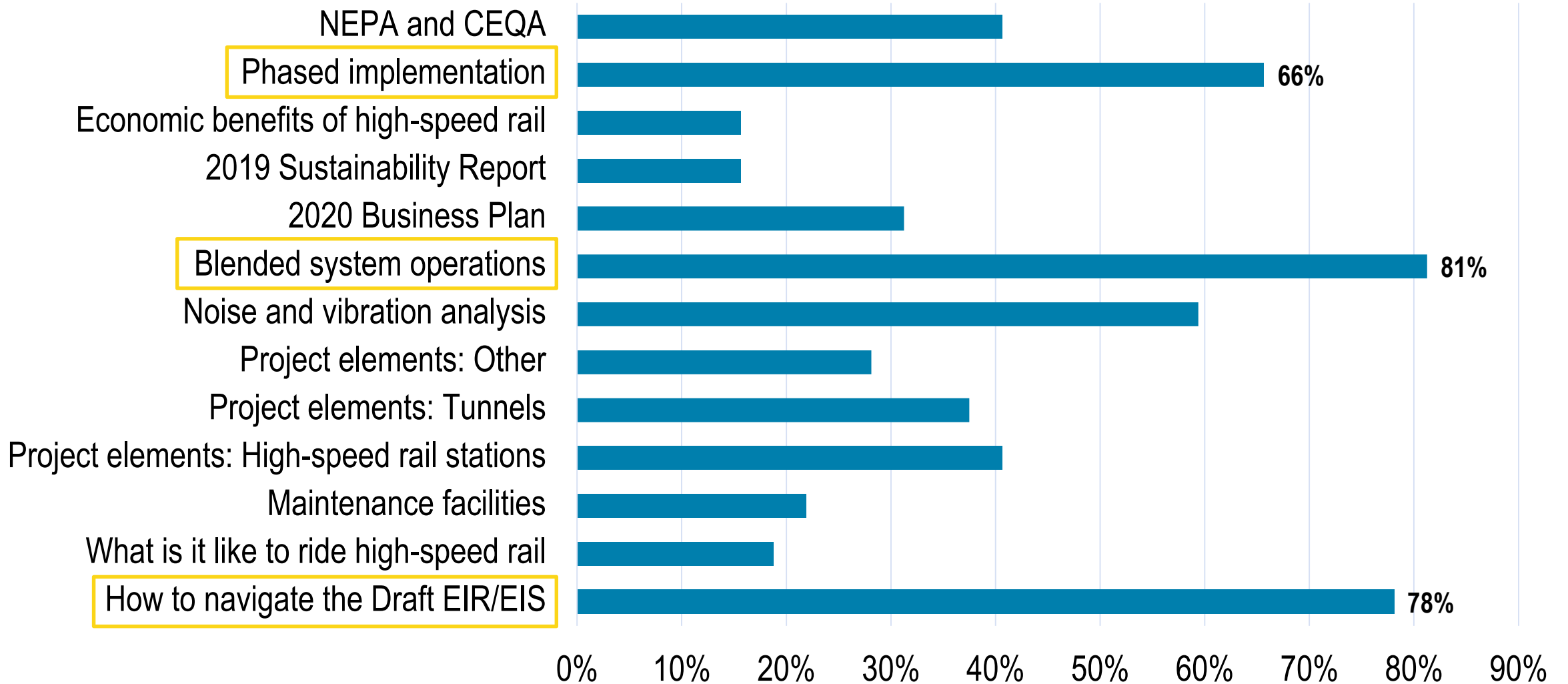
» Weekday evenings



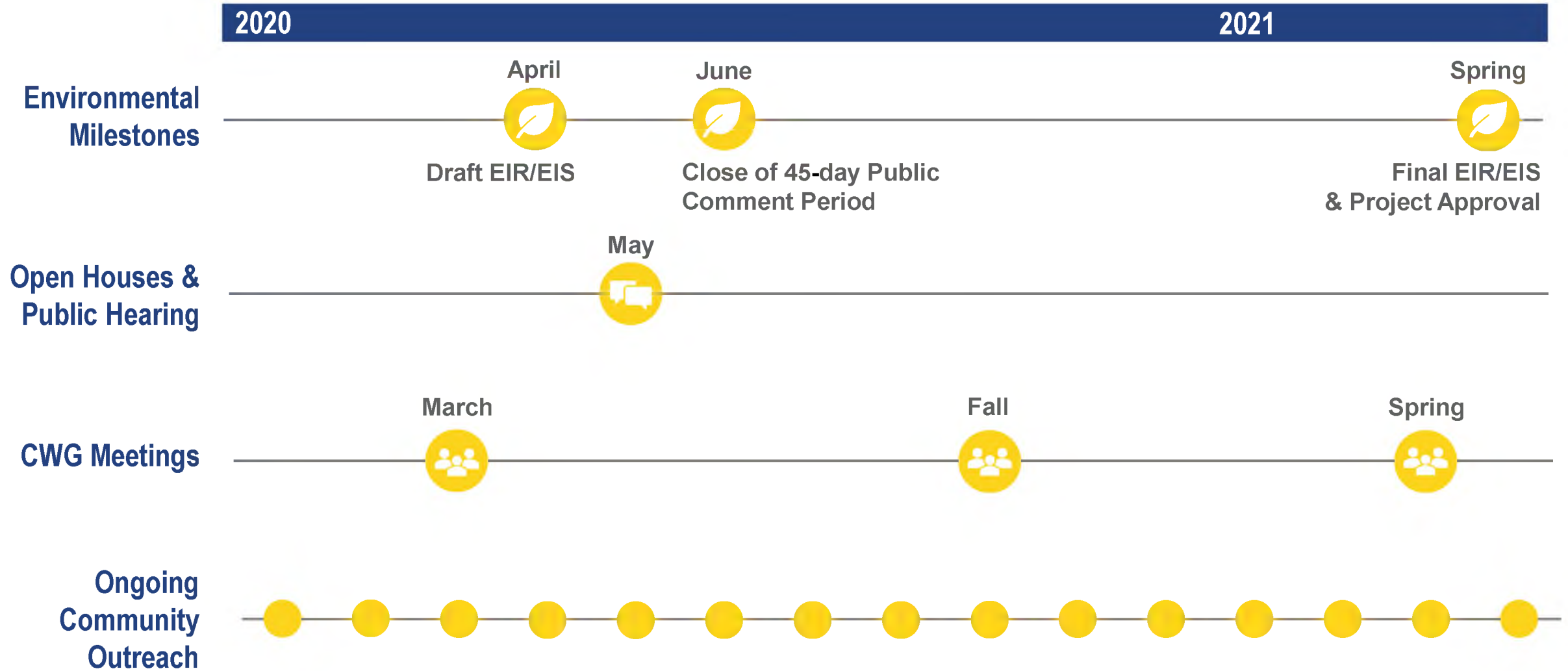
• CWG Meetings

- » Interest in CWG Q&A webinar during 45-day comment period

TOPICS OF INTEREST



SAN JOSE TO MERCED OUTREACH



DRAFT EIR/EIS OPEN HOUSES, PUBLIC HEARING & OFFICE HOURS

TENTATIVE DATES

Open Houses

- **San Jose**

- » Monday, May 11, 2020
- » 4 – 7 pm
- » City Hall Rotunda

- **Gilroy**

- » Thursday, May 14, 2020
- » 4 – 7 pm
- » Veterans Memorial Hall

- **Los Banos**

- » Monday, May 18, 2020
- » 4 – 7 pm
- » Los Banos Community Center

Public Hearing

- **San Jose**

- » Wednesday, May 27, 2020
- » 3 – 8 pm
- » Santa Clara County Board of Supervisors' Chambers

Staff Office Hours

- **Northern CA Regional Office**

- » Monday, May 11, 2020, 12 – 3 pm
- » Wednesday, May 20, 2020, 12 – 3 pm
- » Wednesday, May 27, 2020, 11 am – 2 pm

PUBLIC COMMENT



PUBLIC COMMENT PERIOD GUIDELINES

- **Public comment is intended for the CWG members and staff to hear from the public**
- **Comments will be captured in meeting summaries**
- **2-minute time limit**
- **Please be respectful and follow CWG meeting guidelines**
- **To be added to the queue:**
 - » “Raise your hand” in the webinar, *or*
 - » Send a message via webinar chat
- **Written comments may be submitted via webinar chat or via email after the webinar**
 - » san.jose_merced@hsr.ca.gov



Headquarters

California High-Speed Rail Authority
770 L Street, Suite 800
Sacramento, CA 95814
www.hsr.ca.gov

Northern California Regional Office

California High-Speed Rail Authority
100 Paseo De San Antonio, Suite 300
San Jose, CA 95113

