



**CALIFORNIA**  
High-Speed Rail Authority

# **CENTRAL VALLEY STATUS REPORT**

**Finance & Audit Committee**

# Executive Summary

- Construction Packages (CP) Design-Build Expenditures

- » April 2024 Expenditures totaled \$70.4M:

- Construction Package 1 Expenditures totaled \$31.3M.
- Construction Package 2-3 Expenditures totaled \$37.1M.
- Construction Package 4 Expenditures totaled \$2.0M.

- Change Orders

- » Executed Change Orders this period – 24 for a total of \$25.3 M.

- Risk Contingency

- » Approved Contingency – \$6,103.9M budgeted contract contingency. Contingency balance is \$906.3M as of data date.

- CP Construction Labor

- » April 2024, Average Daily Site Workers (by Week) – 1,538 workers. An increase of 39 workers from the previous period (1,499).

# Executive Summary cont.

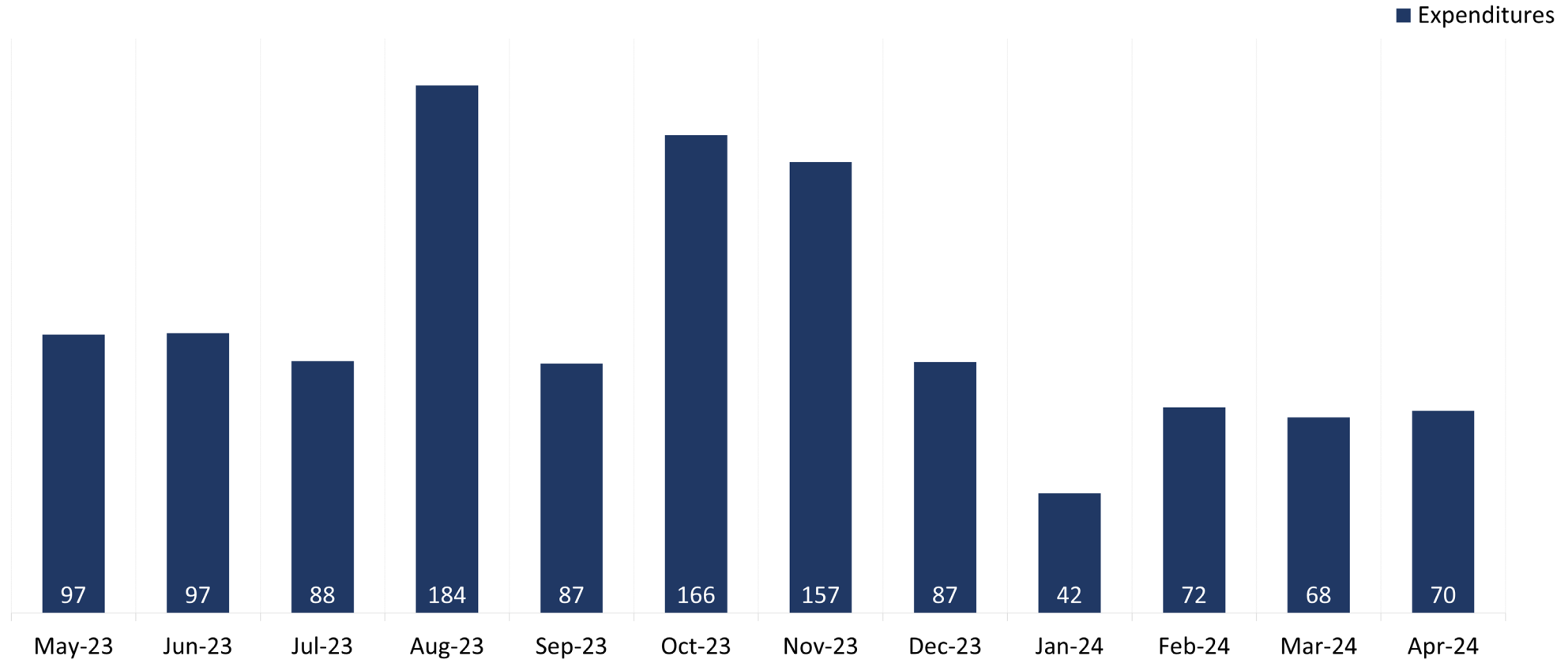
- CP Construction Progress
  - » Structures – 79 underway/construction complete compared to 93 structures total (85%). No change from the previous period.
  - » Guideway – 91 miles underway/construction complete compared to 119 miles total (76%). No change from the previous period.
- Utility Relocations Status
  - » Relocated: 1,324 (72%); In Progress: 243 (13%); Approved to Start: 0 (0%); Not Started: 269 (15%); Total: 1,836. A total of 10 relocated in April 2024. A sequence of activities must be completed to begin utility relocation work. These activities include environmental clearance, executed third-party agreement(s), design approval, construction work plans, pre-construction walkthroughs, acquisition of real property, and/or land right conveyances.
- CP Real Property/Right-of-Way (ROW)
  - » Total Parcels Delivered to Date – 2,263 parcels compared to an estimated 2,288 parcels needed.
  - » Parcels Delivered to Design-Builder (DB) – One parcel from CP 1 in April 2024.
  - » Total Railroad Parcels Delivered to Date – 153 parcels delivered compared to an estimated 176 total railroad parcels needed.
  - » Railroad Parcels Delivered to Design-Builder – Zero parcels in April 2024.

# Executive Summary cont.

- Project Development (Environmental Clearance) Schedule – Notice of Determination (NOD)/Record of Decision (ROD)
  - » Palmdale to Burbank – The Authority and the Regional Consultant teams worked on resolving outstanding technical issues and finalizing the 4 Volumes of the Final EIR/EIS which is to be released to the public in May 2024. The Authority consulted with the Regulatory Agencies on obtaining the required Permits from them. The Team also started work on the preparation of the materials for the Executive Briefings and Board Presentations.
  - » Los Angeles to Anaheim – Admin Draft EIR/EIS scheduled for early summer 2024. NOD/ROD anticipated in late 2025.
- Project Development (Post-Record of Decision) Schedule
  - » Merced Extension (Merced to Madera) – Stantec Inc., under Agreement HSR22-02, continues to make progress on the early actions of this Project. On June 30, 2023, the Task Order #3 was issued to Stantec which is the roadmap for all deliverables in FY23-24. The Program Management Plan and the Annual Work Plan for FY23-24 was also approved on June 30, 2023. NTP-2 (to advance to 100% design and construction ready documents in Stage 4) was issued on April 29, 2024.
  - » Fresno to Bakersfield Locally Generated Alternative (LGA) – HNTB Corporation (HNTB), under agreement HSR22-01, continues to make progress on the early actions of this Project. HNTB has submitted the Preliminary alignment Footprint to the Authority and a workshop for Authority staff will be held in June 2024 to refine the design elements. Draft 30% Street Improvement Plan Package for Segment 1 has been received. Design Baseline Report is under development. CRISI-NTP -2: Final TSRs are being progressed. Geotech boring plan is being prepared and Geotech information will be paired with final TSRs.

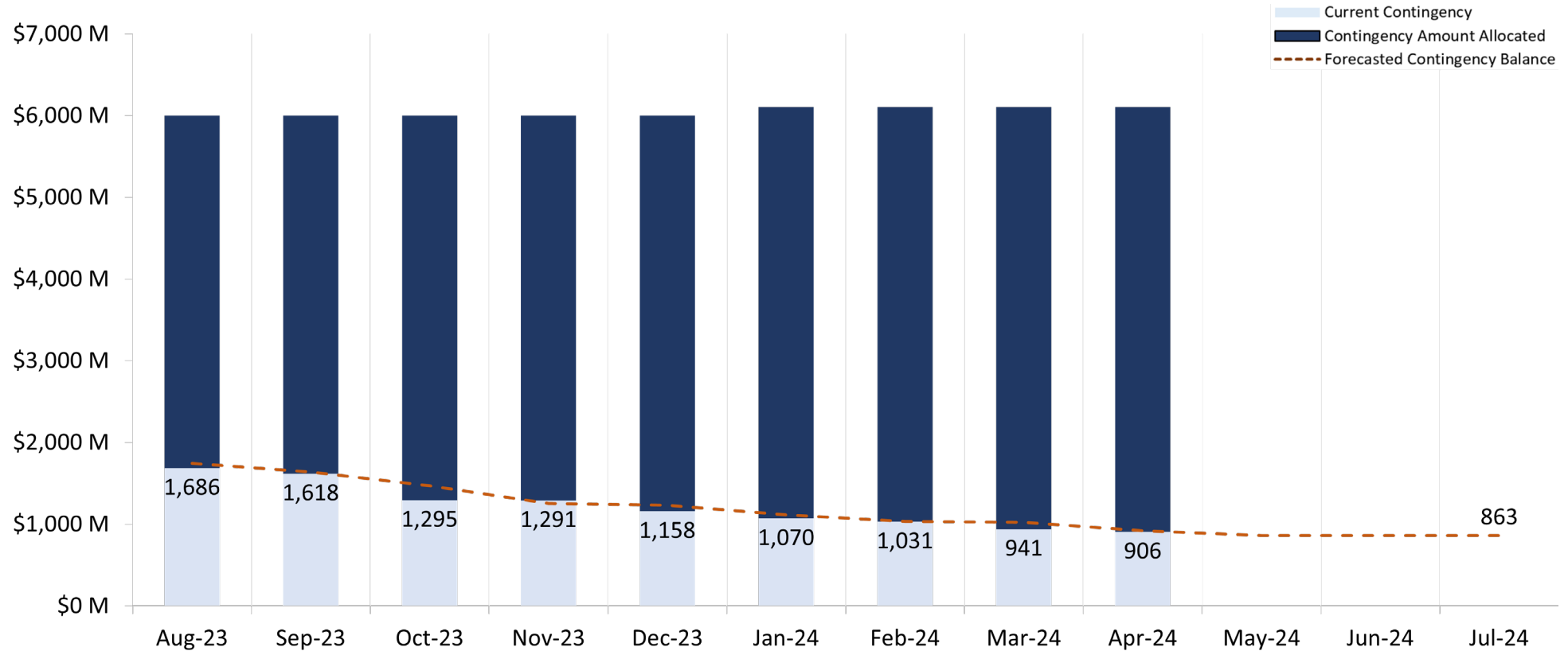
# CP 1-4 – Design-Build Expenditures

CP 1-4 – Monthly Expenditures (\$ Millions)



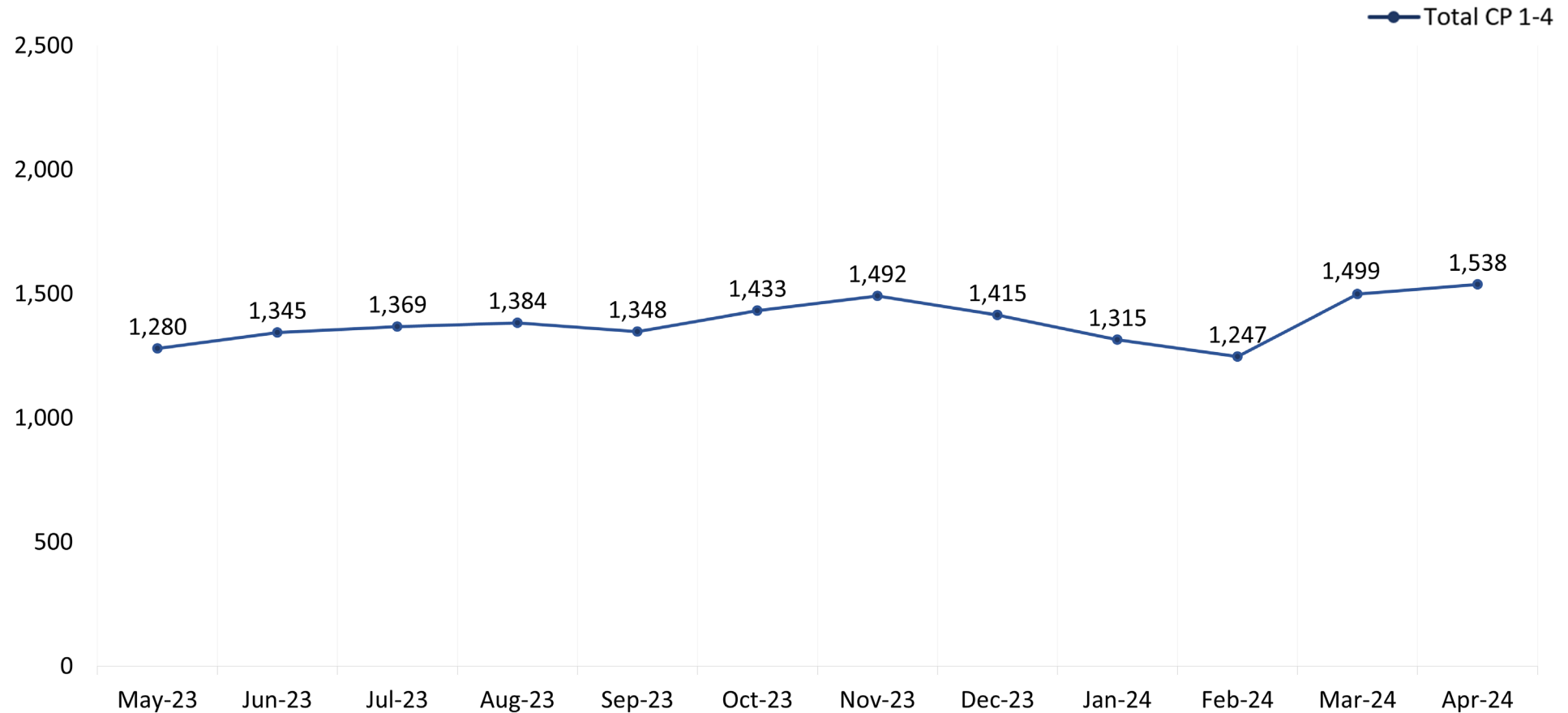
# CP 1-4 – Risk Contingency

CP 1-4 – Risk Contingency Status (\$ Millions)



# CP 1-4 – Construction Labor

CP 1-4 – Monthly Construction Workforce Total – Actual (FTE)

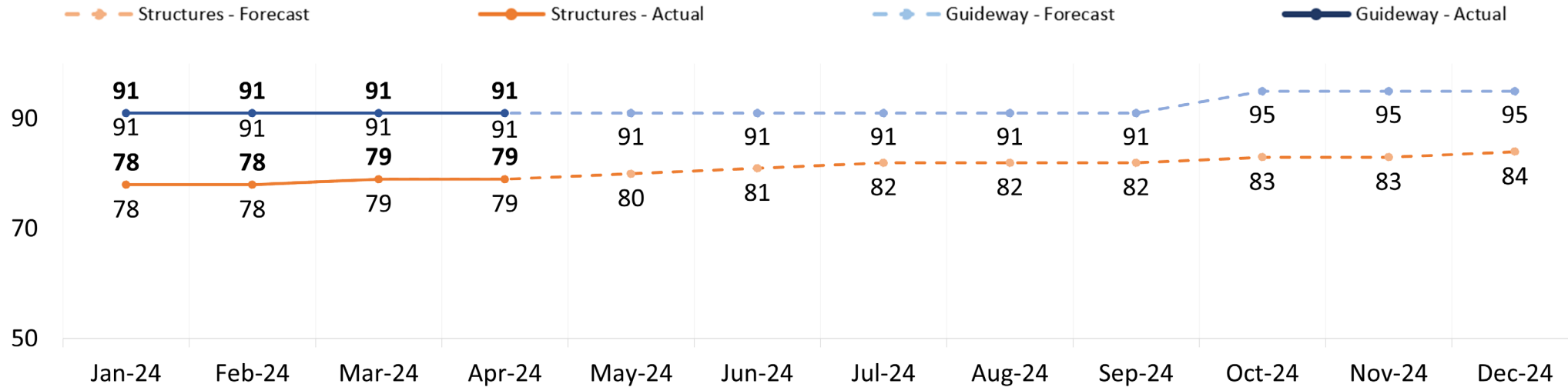


# CP 1-4 – Construction Progress

## CP 1-4 Monthly Construction Status – In Progress vs. Completed

Construction	CP 1		CP 2-3		CP 4		Overall		Total
	In Progress	Completed	In Progress	Completed	In Progress	Completed	In Progress	Completed	
<b>Guideway</b>	18	2	15	34	1	21	34	57	<b>91</b>
<b>Structures</b>	10	18	24	16	0	11	34	45	<b>79</b>

## CP 1-4 Construction Progress to Completion – Forecast vs. Actual



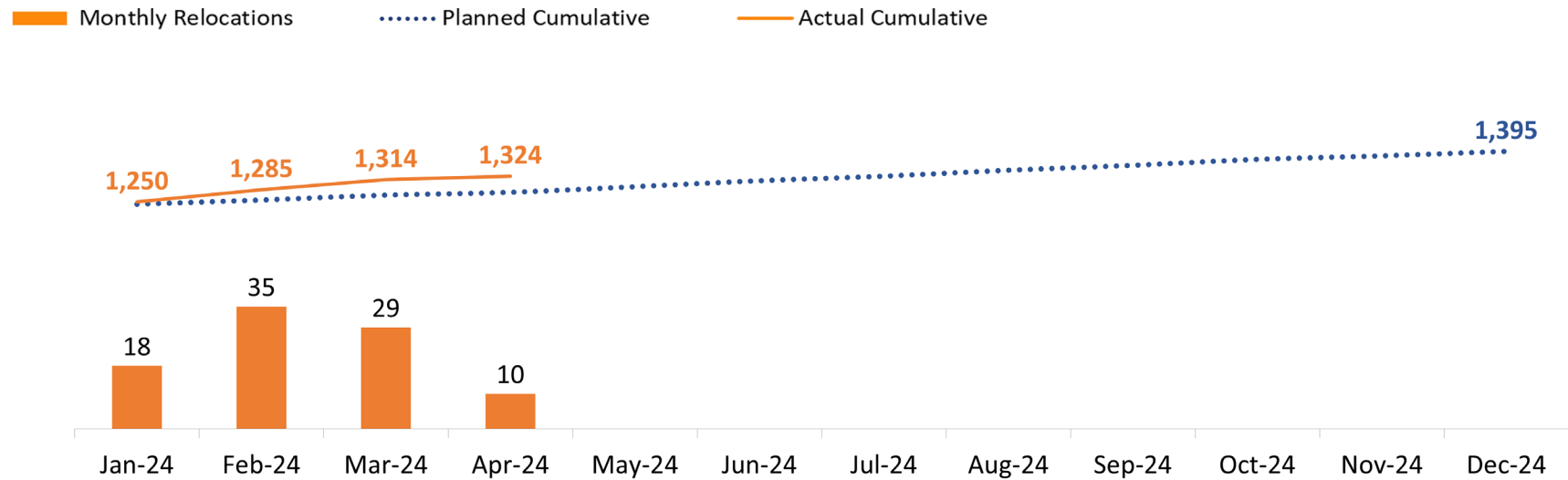


# CP 1-4 – Utility Relocations

## CP 1-4 – Utility Relocation Summary

Construction Package	Total Relocations April 30, 2024	Total Utilities Relocated to Date April 30, 2024	Remaining Utility Relocations April 30, 2024
CP 1	992	668	324
CP 2-3	701	524	177
CP 4	143	132	11
<b>Total</b>	<b>1,836</b>	<b>1,324</b>	<b>512</b>

## CP 1-4 – Utility Relocation Status Summary-Monthly



# CP 1-4 – Utility Relocation Summary

## CP 1-4 – Summary by Utility Type

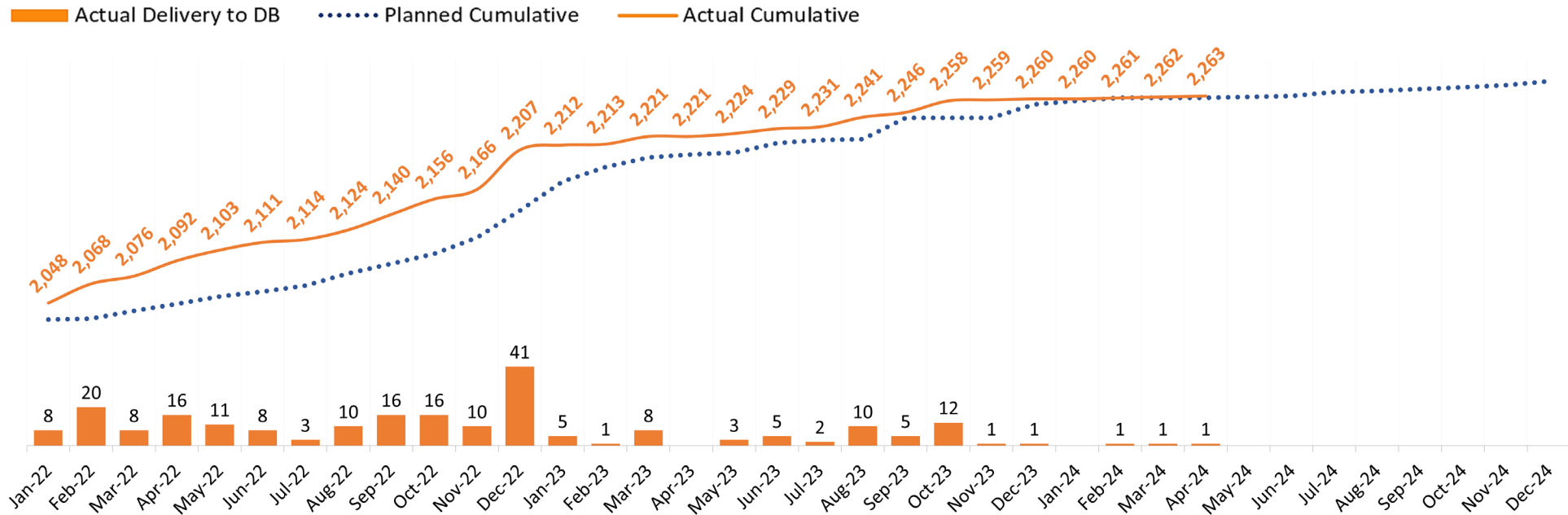
Utility	Status	CP-1	CP-2-3	CP-4	CP 1-4 Total	Percentage
Electric	NOT STARTED	62	96	0	158	24%
	APPROVED TO START	0	0	0	0	0%
	IN PROGRESS	18	30	0	48	7%
	RELOCATED	135	258	62	455	69%
	<b>TOTAL</b>	<b>215</b>	<b>384</b>	<b>62</b>	<b>661</b>	<b>100%</b>
Gas	NOT STARTED	17	9	0	26	21%
	APPROVED TO START	0	0	0	0	0%
	IN PROGRESS	26	0	0	26	21%
	RELOCATED	48	18	7	73	58%
	<b>TOTAL</b>	<b>91</b>	<b>27</b>	<b>7</b>	<b>125</b>	<b>100%</b>
Telecom	NOT STARTED	32	2	0	34	5%
	APPROVED TO START	0	0	0	0	0%
	IN PROGRESS	49	17	0	66	10%
	RELOCATED	334	214	32	580	85%
	<b>TOTAL</b>	<b>415</b>	<b>233</b>	<b>32</b>	<b>680</b>	<b>100%</b>
Wet	NOT STARTED	38	13	0	51	14%
	APPROVED TO START	0	0	0	0	0%
	IN PROGRESS	82	10	11	103	28%
	RELOCATED	151	34	31	216	58%
	<b>TOTAL</b>	<b>271</b>	<b>57</b>	<b>42</b>	<b>370</b>	<b>100%</b>

# CP 1-4 – Real Property/Right-of-Way (ROW)

## CP 1-4 – Right-of-Way (ROW) Summary

Construction Package	Total Needed Parcels April 30, 2024	Total Parcels Delivered to Date April 30, 2024	Remaining Parcels to be Delivered April 30, 2024	Percentage Delivered
CP 1	1,078	1,066	12	99%
CP 2-3	987	974	13	99%
CP 4	223	223	0	100%
<b>Total</b>	<b>2,288</b>	<b>2,263</b>	<b>25</b>	<b>99%</b>

## CP 1-4 – Parcel Delivery to Design-Builder (DB) Summary

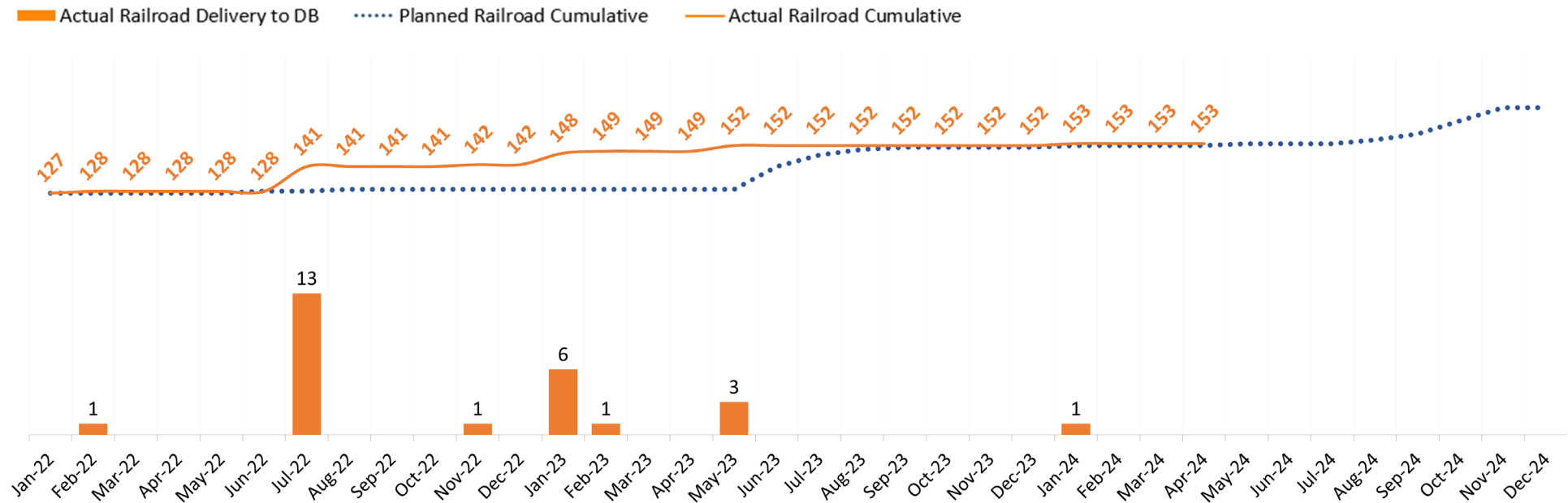


# CP 1-4 – Real Property/Right-of-Way (ROW) Railroad

## CP 1-4 – Right-of-Way (ROW) Railroad Summary

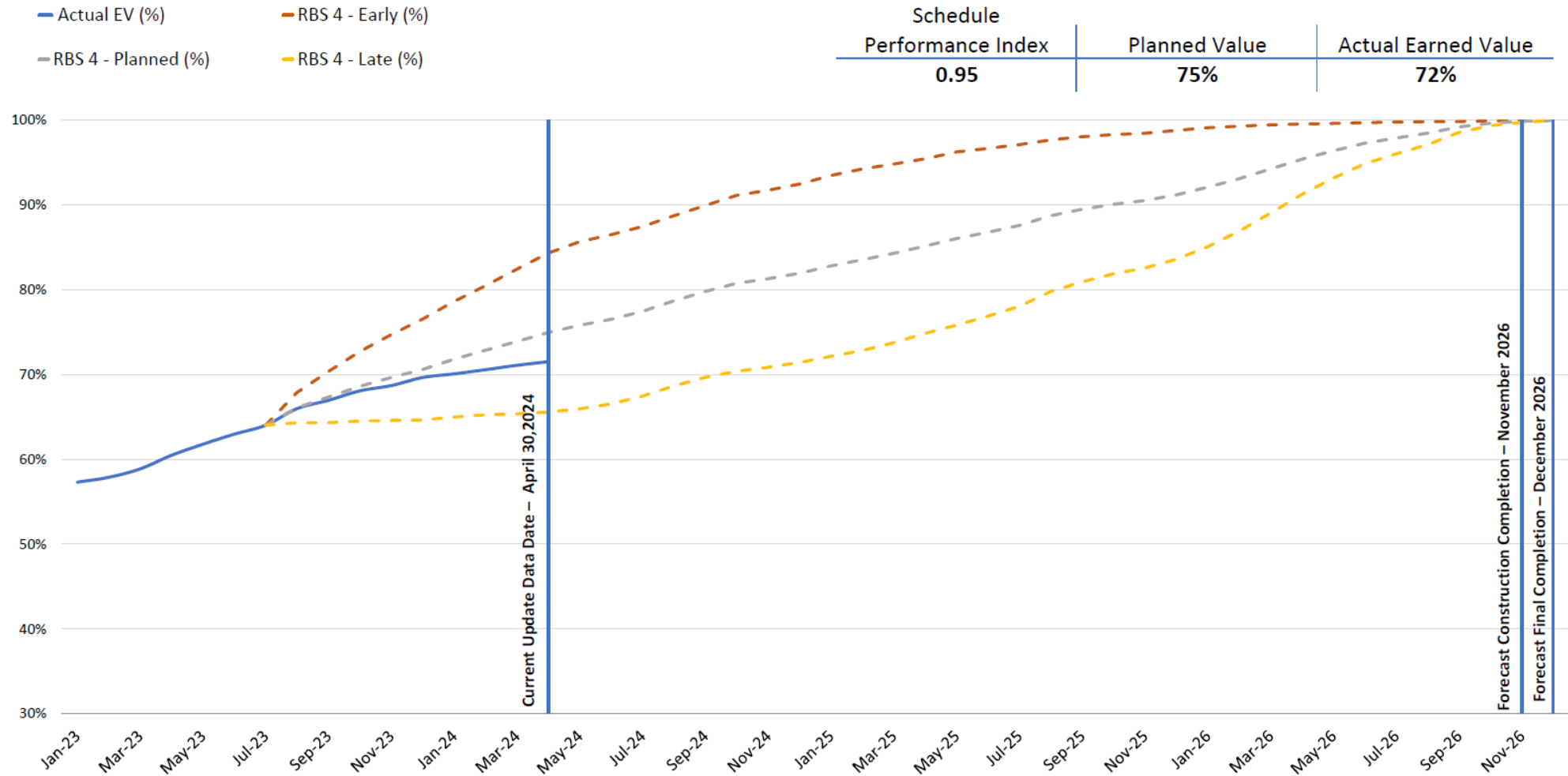
Construction Package	Total Needed Railroad Parcels April 30, 2024	Total Railroad Parcels Delivered to Date April 30, 2024	Remaining Railroad Parcels to be Delivered April 30, 2024
CP 1	89	69	20
CP 2-3	58	55	3
CP 4	29	29	0
<b>Total</b>	<b>176</b>	<b>153</b>	<b>23</b>

## CP 1-4 – Railroad Parcel Delivery to Design-Builder (DB) Summary



# CP 1 – Earned Value

## CP 1 – Earned Value Summary (%)



# Preliminary Numbers for July F&A Report

Look Ahead at Next Month's F&A Report with Preliminary Data (through May 31, 2024)

*Table 1 - Labor Count Number Update*

Construction Packages	Current Month—April 2024 Data	Preliminary—May 2024 Data
Construction Package 1	336	342
Construction Package 2-3	1,068	1,135
Construction Package 4	134	85
<b>Totals</b>	<b>1,538</b>	<b>1,562</b>
An increase of 24 workers. CP 1 and CP 2-3 saw an increase in workers.		

*Table 2 – ROW Delivered Parcel Count Update*

Construction Packages	Current Month—April 2024 Data	Preliminary—May 2024 Data
Construction Package 1	1,066	1,066
Construction Package 2-3	974	975
Construction Package 4	223	223
<b>Totals</b>	<b>2,263</b>	<b>2,264</b>
Delivered 1 parcel in May 2024.		

*Table 3 - Executed Change Order Update*

Construction Packages	Current Month—April 2024 Data	Preliminary—May 2024 Data
Construction Package 1	\$13.0M (13)	\$7.5M (8)
Construction Package 2-3	\$10.9M (6)	\$17.0M (3)
Construction Package 4	\$1.3M (5)	\$6.4M (6)
<b>Totals</b>	<b>\$25.3M (24)</b>	<b>\$30.9M (17)</b>
17 executed Change Orders in May 2024.		

*Table 4 – Utility Relocation Status*

Construction Packages	Current Month—April 2024 Data	Preliminary—May 2024 Data
Construction Package 1	668	673
Construction Package 2-3	524	527
Construction Package 4	132	133
<b>Totals</b>	<b>1,324</b>	<b>1,333</b>
There were 9 Utility Relocations in May 2024.		