

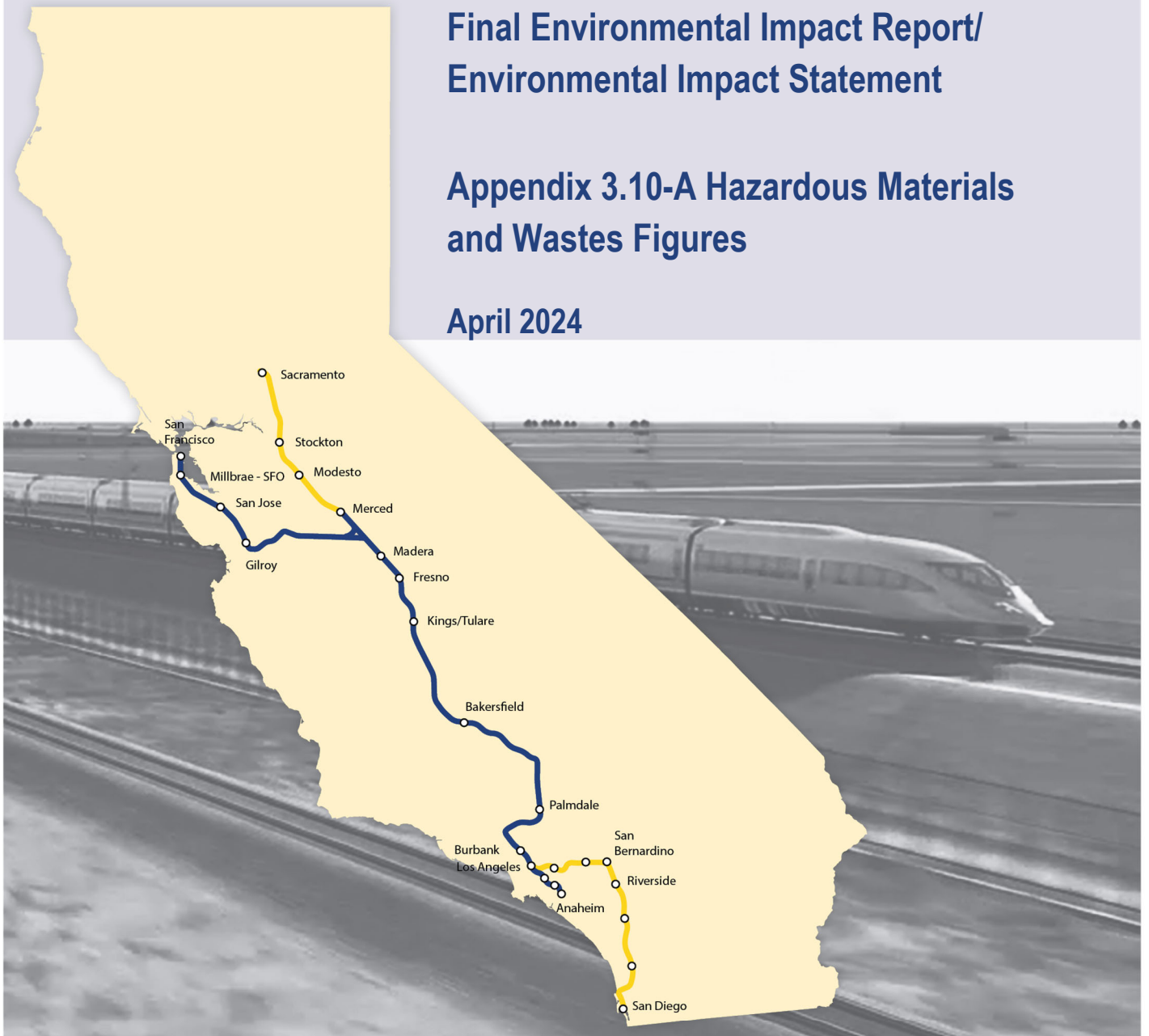
California High-Speed Rail Authority

Palmdale to Burbank Project Section

Final Environmental Impact Report/
Environmental Impact Statement

Appendix 3.10-A Hazardous Materials
and Wastes Figures

April 2024



The environmental review, consultation, and other actions required by applicable federal environmental laws for this project are being or have been carried out by the State of California pursuant to 23 U.S.C. 327 and a Memorandum of Understanding dated July 23, 2019, and executed by the Federal Railroad Administration and the State of California.

This page intentionally left blank

Since publication of the Palmdale to Burbank Section Draft Environmental Impact Report/Environmental Impact Statement (EIR/EIS), the following substantive changes have been made to this appendix:

- Figure 3.10-A-2 and Figure 3.10-A-5 were revised to reflect a reduced footprint in Bee Canyon for the Refined SR14 and SR14A Build Alternatives.
- Figure 3.10-A-3 and Figure 3.10-A-6 were revised to reflect a reduced footprint near Pacoima Wash for the Refined SR14 and SR14A Build Alternatives.
- Figure 3.10-A-3, Figure 3.10-A-6, Figure 3.10-A-9, Figure 3.10-A-12, Figure 3.10-A-15, and Figure 3.10-A-18 were revised to denote the areas of overlap between the Palmdale to Burbank and Burbank to Los Angeles project sections.
- Figure 3.10-A-19 was revised to remove Area # 3: Verdugo, because this area is no longer a part of the SFV Superfund Site.

This page intentionally left blank

TABLE OF CONTENTS

Figures

Figure 3.10-A-1 Potential Environmental Concerns, Landfills, Educational Facilities, and Oil/Gas Wells within Refined SR14 Build Alternative Resource Study Area (Map 1 of 3)..... 1

Figure 3.10-A-2 Potential Environmental Concerns, Landfills, Educational Facilities, and Oil/Gas Wells within Refined SR14 Build Alternative Resource Study Area (Map 2 of 3)..... 2

Figure 3.10-A-3 Potential Environmental Concerns, Landfills, Educational Facilities, and Oil/Gas Wells within Refined SR14 Build Alternative Resource Study Area (Map 3 of 3)..... 3

Figure 3.10-A-4 Potential Environmental Concerns, Landfills, Educational Facilities, and Oil/Gas Wells within the SR14A Build Alternative Resource Study Area (Map 1 of 3)..... 4

Figure 3.10-A-5 Potential Environmental Concerns, Landfills, Educational Facilities, and Oil/Gas Wells within the SR14A Build Alternative Resource Study Area (Map 2 of 3)..... 5

Figure 3.10-A-6 Potential Environmental Concerns, Landfills, Educational Facilities, and Oil/Gas Wells within the SR14A Build Alternative Resource Study Area (Map 3 of 3)..... 6

Figure 3.10-A-7 Potential Environmental Concerns, Landfills, Educational Facilities, and Oil/Gas Wells within E1 Build Alternative Resource Study Area (Map 1 of 3)..... 7

Figure 3.10-A-8 Potential Environmental Concerns, Landfills, Educational Facilities, and Oil/Gas Wells within E1 Build Alternative Resource Study Area (Map 2 of 3)..... 8

Figure 3.10-A-9 Potential Environmental Concerns, Landfills, Educational Facilities, and Oil/Gas Wells within E1 Build Alternative Resource Study Area (Map 3 of 3)..... 9

Figure 3.10-A-10 Potential Environmental Concerns, Landfills, Educational Facilities, and Oil/Gas Wells within the E1A Build Alternative RSA (Map 1 of 3)..... 10

Figure 3.10-A-11 Potential Environmental Concerns, Landfills, Educational Facilities, and Oil/Gas Wells within the E1A Build Alternative RSA (Map 2 of 3)..... 11

Figure 3.10-A-12 Potential Environmental Concerns, Landfills, Educational Facilities, and Oil/Gas Wells within the E1A Build Alternative RSA (Map 3 of 3) 12

Figure 3.10-A-13 Potential Environmental Concerns, Landfills, Educational Facilities, and Oil/Gas Wells within the E2 Build Alternative RSA (Map 1 of 3) 13

Figure 3.10-A-14 Potential Environmental Concerns, Landfills, Educational Facilities, and Oil/Gas Wells within the E2 Build Alternative RSA (Map 2 of 3) 14

Figure 3.10-A-15 Potential Environmental Concerns, Landfills, Educational Facilities, and Oil/Gas Wells within the E2 Build Alternative RSA (Map 3 of 3) 15

Figure 3.10-A-16 Potential Environmental Concerns, Landfills, Educational Facilities, and Oil/Gas Wells within the E2A Build Alternative RSA (Map 1 of 3) 16

Figure 3.10-A-17 Potential Environmental Concerns, Landfills, Educational Facilities, and Oil/Gas Wells within the E2A Build Alternative RSA (Map 2 of 3) 17

Figure 3.10-A-18 Potential Environmental Concerns, Landfills, Educational Facilities, and Oil/Gas Wells within the E2A Build Alternative RSA (Map 3 of 3) 18

Figure 3.10-A-19 San Fernando Valley Superfund Site 19

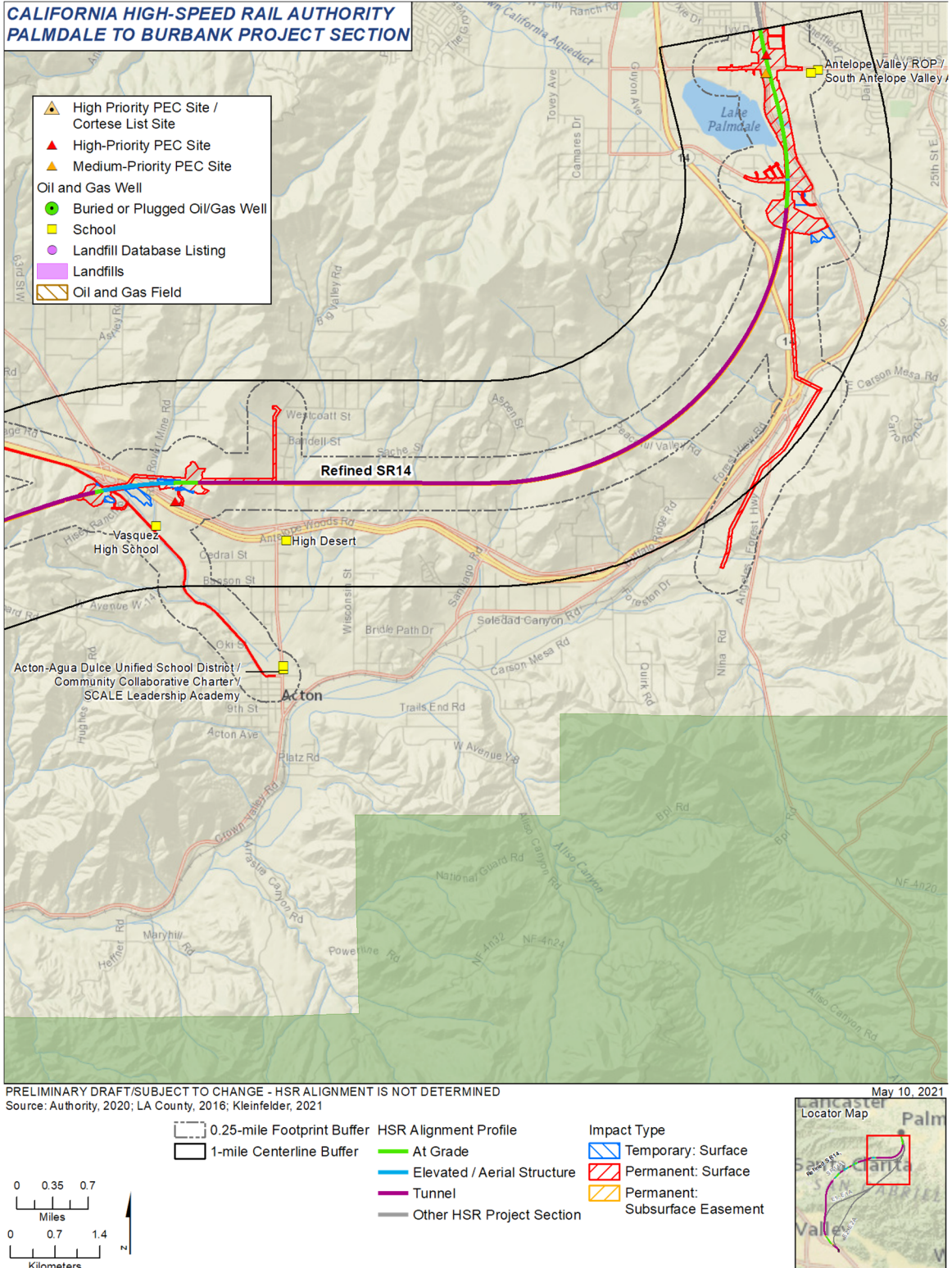
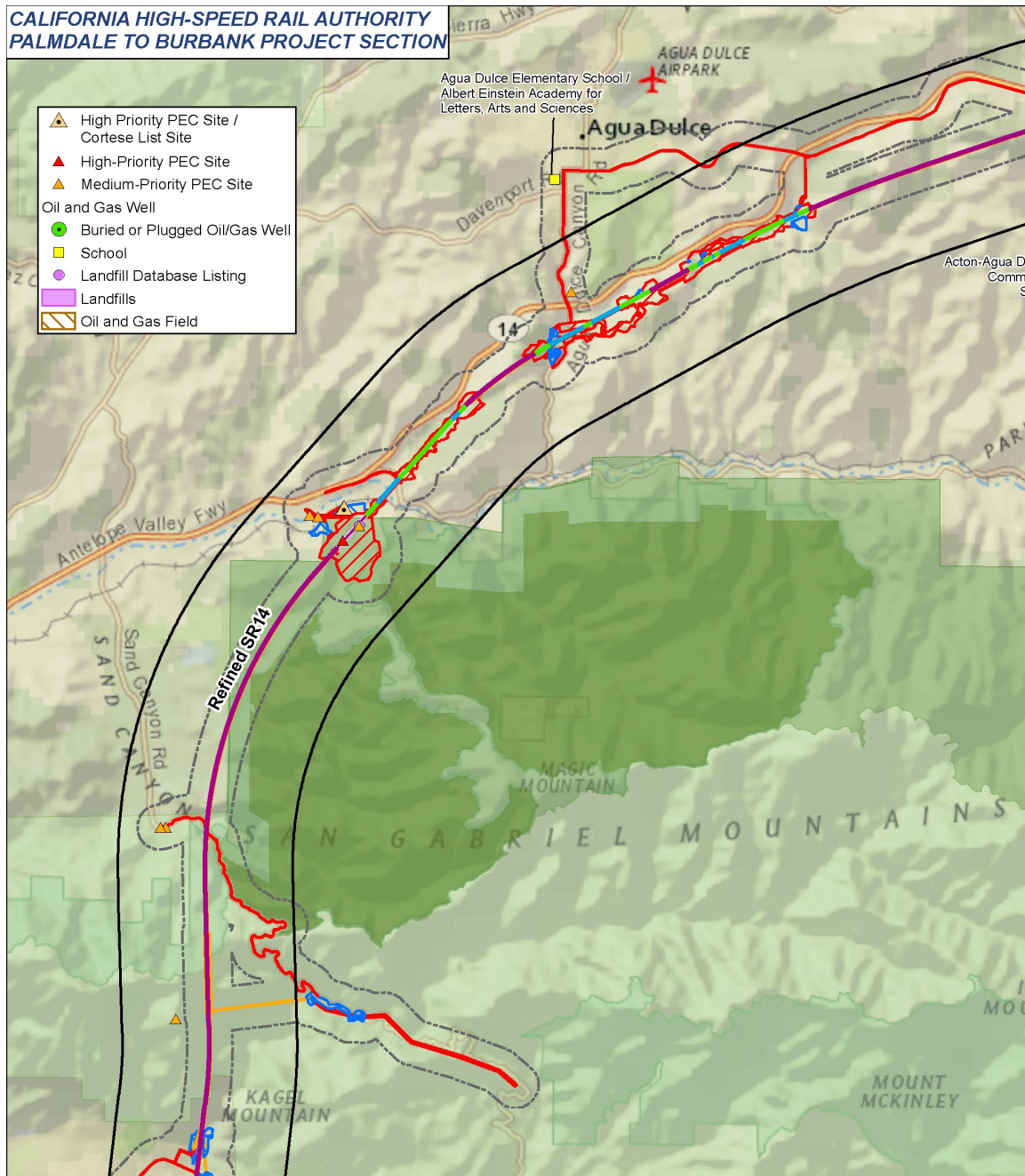


Figure 3.10-A-1 Potential Environmental Concerns, Landfills, Educational Facilities, and Oil/Gas Wells within Refined SR14 Build Alternative Resource Study Area (Map 1 of 3)



PRELIMINARY DRAFT/SUBJECT TO CHANGE - HSR ALIGNMENT IS NOT DETERMINED
Source: Authority, 2023; LA County, 2016; Kleinfelder, 2024

Figure 3.10-A-2 Potential Environmental Concerns, Landfills, Educational Facilities, and Oil/Gas Wells within Refined SR14 Build Alternative Resource Study Area (Map 2 of 3)

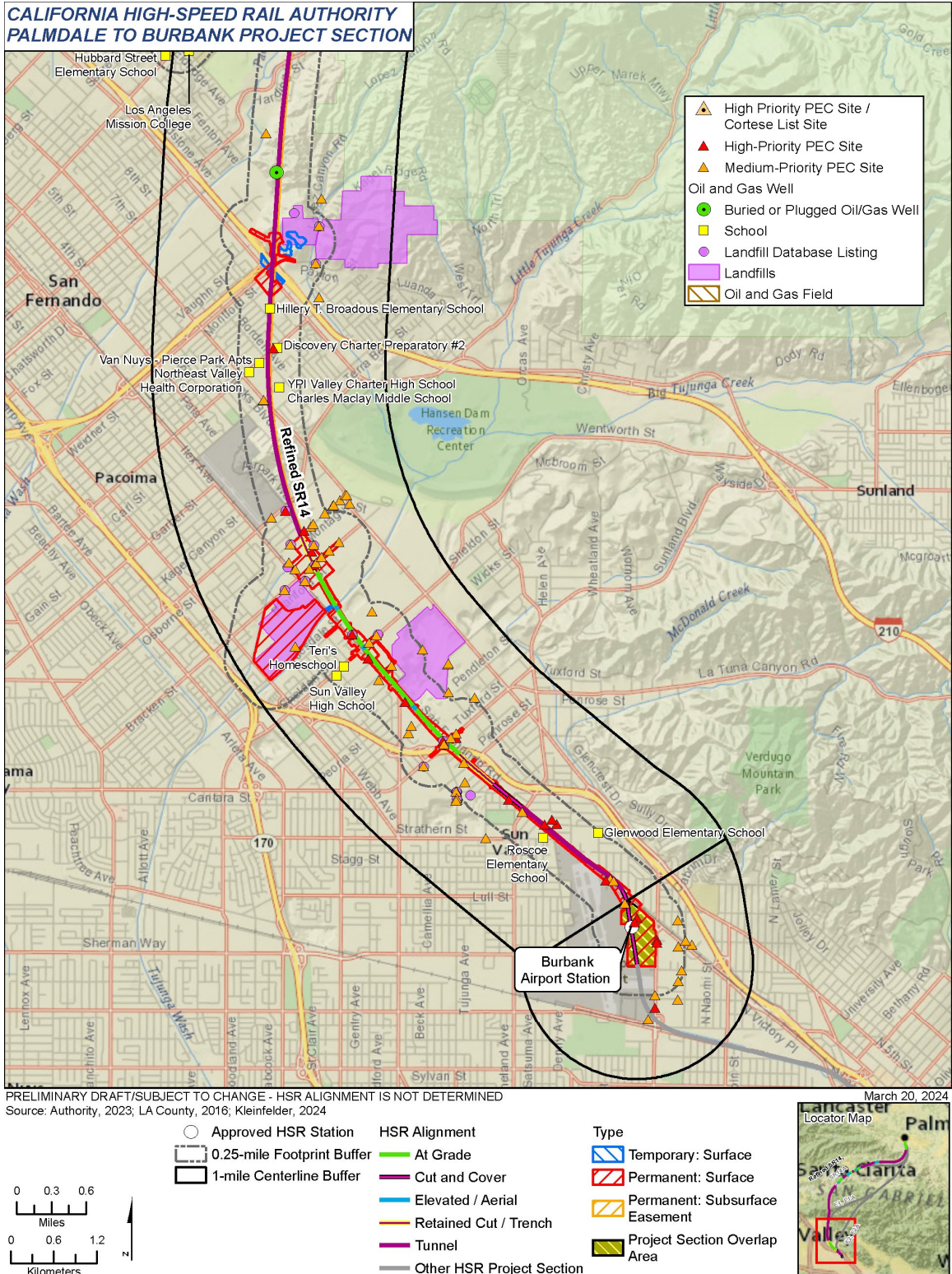


Figure 3.10-A-3 Potential Environmental Concerns, Landfills, Educational Facilities, and Oil/Gas Wells within Refined SR14 Build Alternative Resource Study Area (Map 3 of 3)

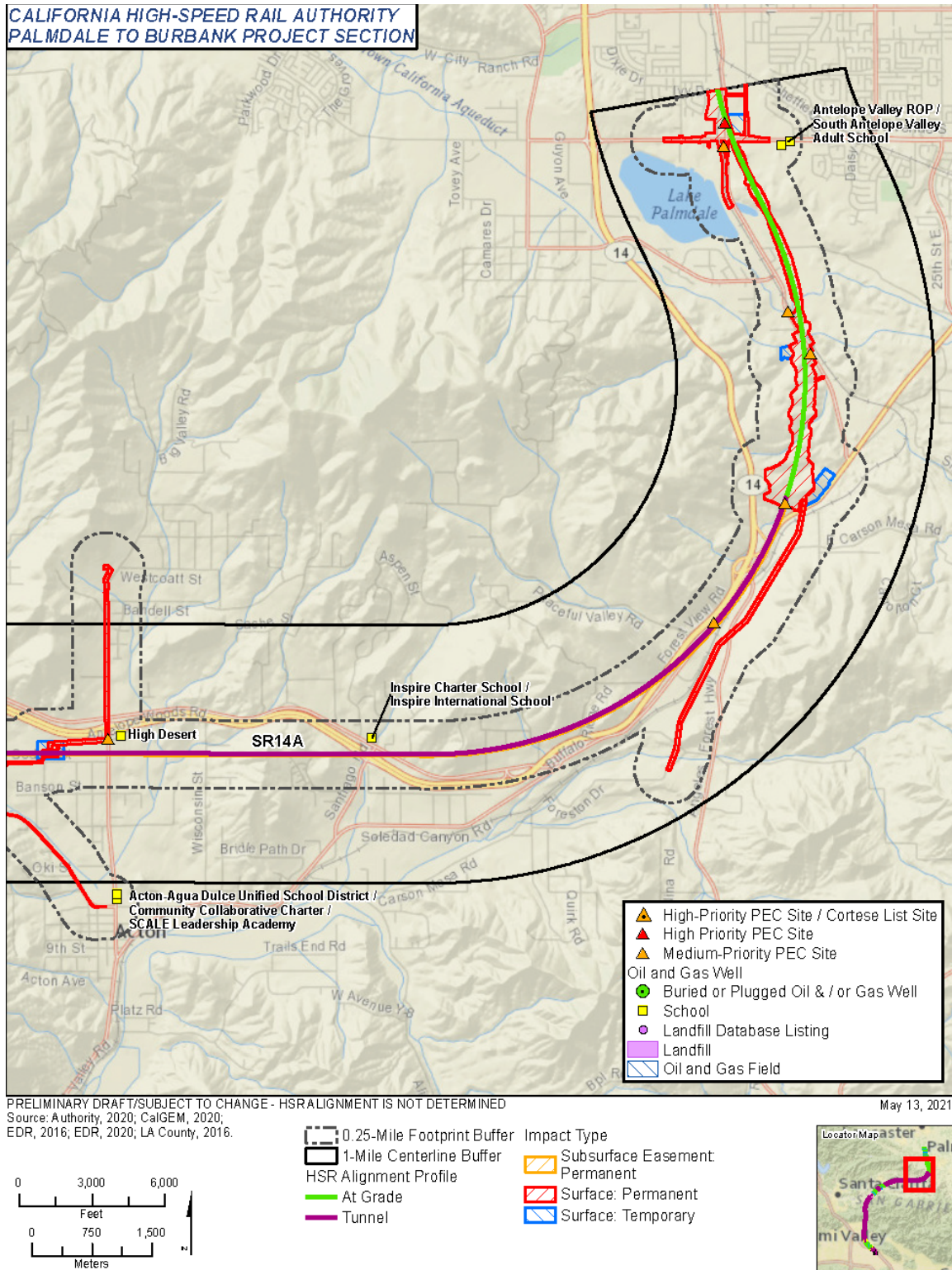


Figure 3.10-A-4 Potential Environmental Concerns, Landfills, Educational Facilities, and Oil/Gas Wells within the SR14A Build Alternative Resource Study Area (Map 1 of 3)

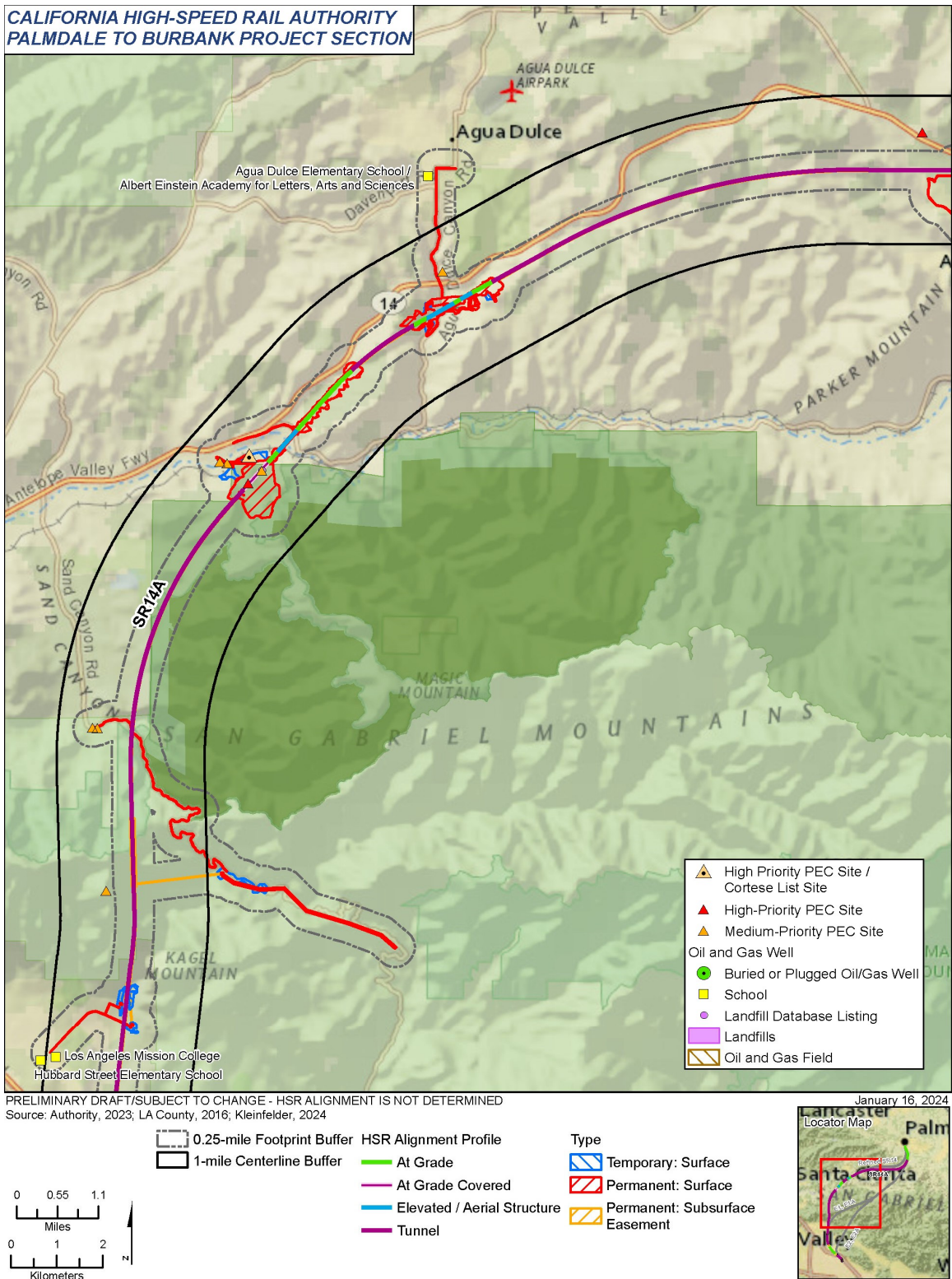


Figure 3.10-A-5 Potential Environmental Concerns, Landfills, Educational Facilities, and Oil/Gas Wells within the SR14A Build Alternative Resource Study Area (Map 2 of 3)

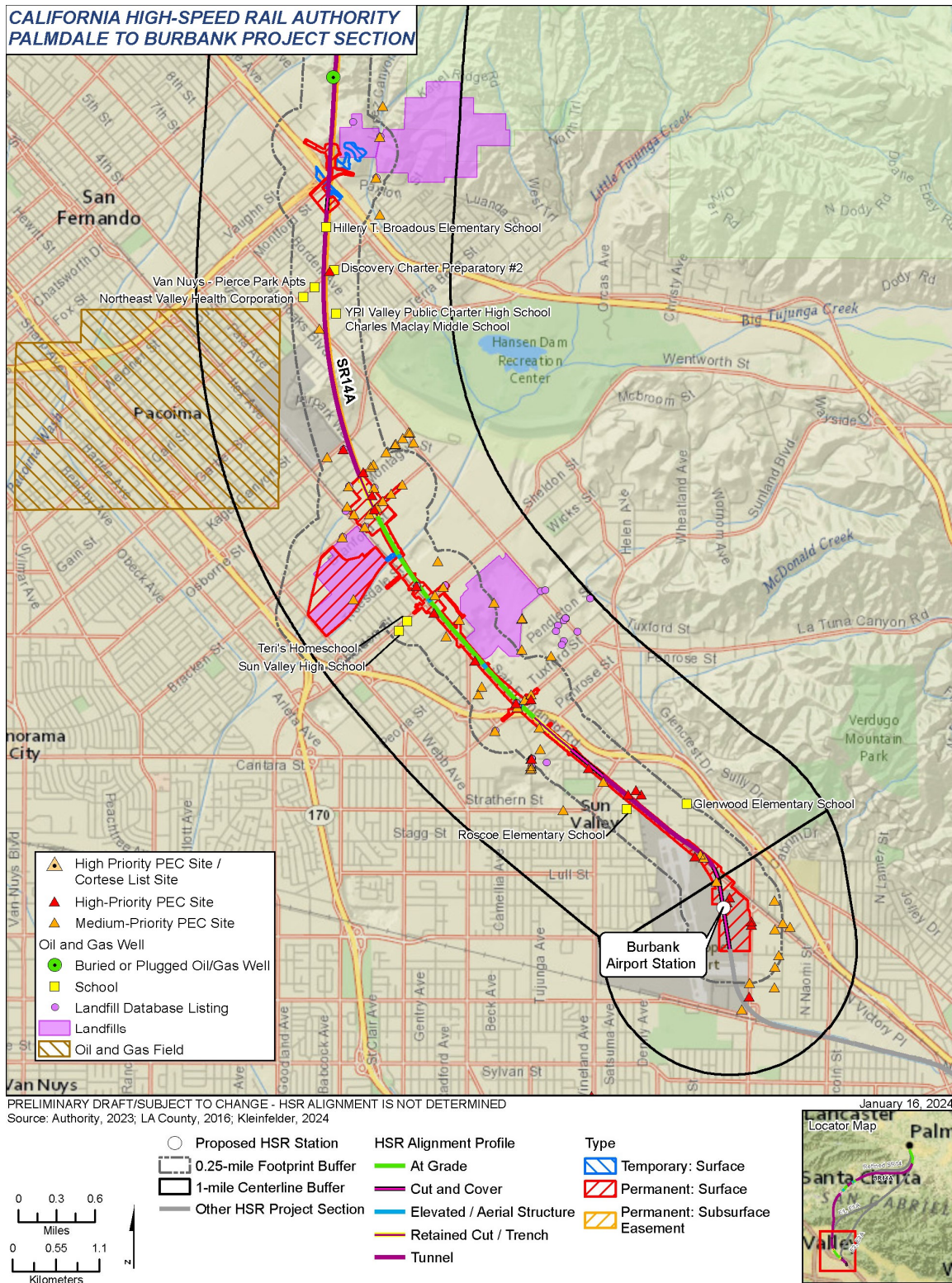


Figure 3.10-A-6 Potential Environmental Concerns, Landfills, Educational Facilities, and Oil/Gas Wells within the SR14A Build Alternative Resource Study Area (Map 3 of 3)

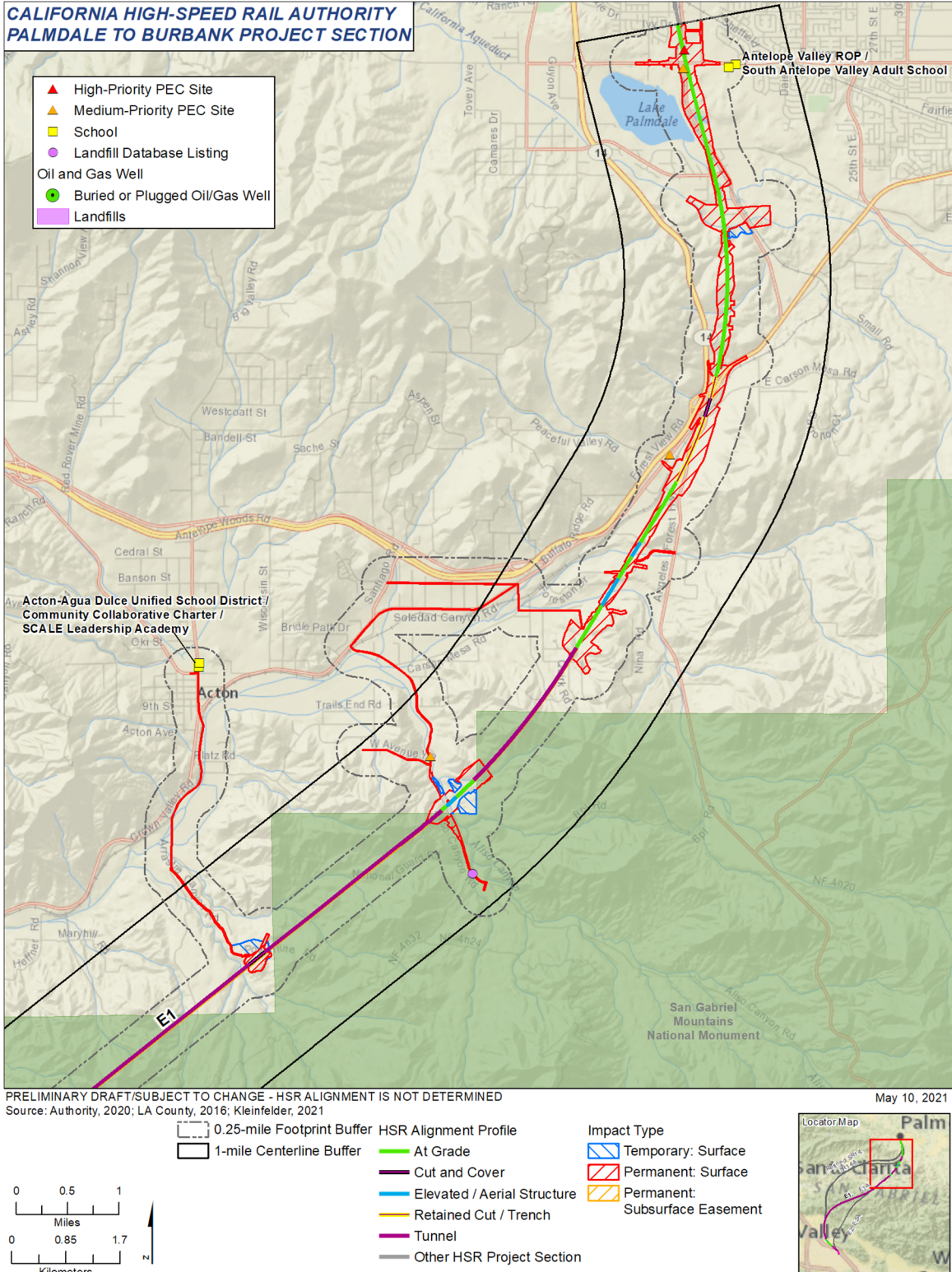


Figure 3.10-A-7 Potential Environmental Concerns, Landfills, Educational Facilities, and Oil/Gas Wells within E1 Build Alternative Resource Study Area (Map 1 of 3)

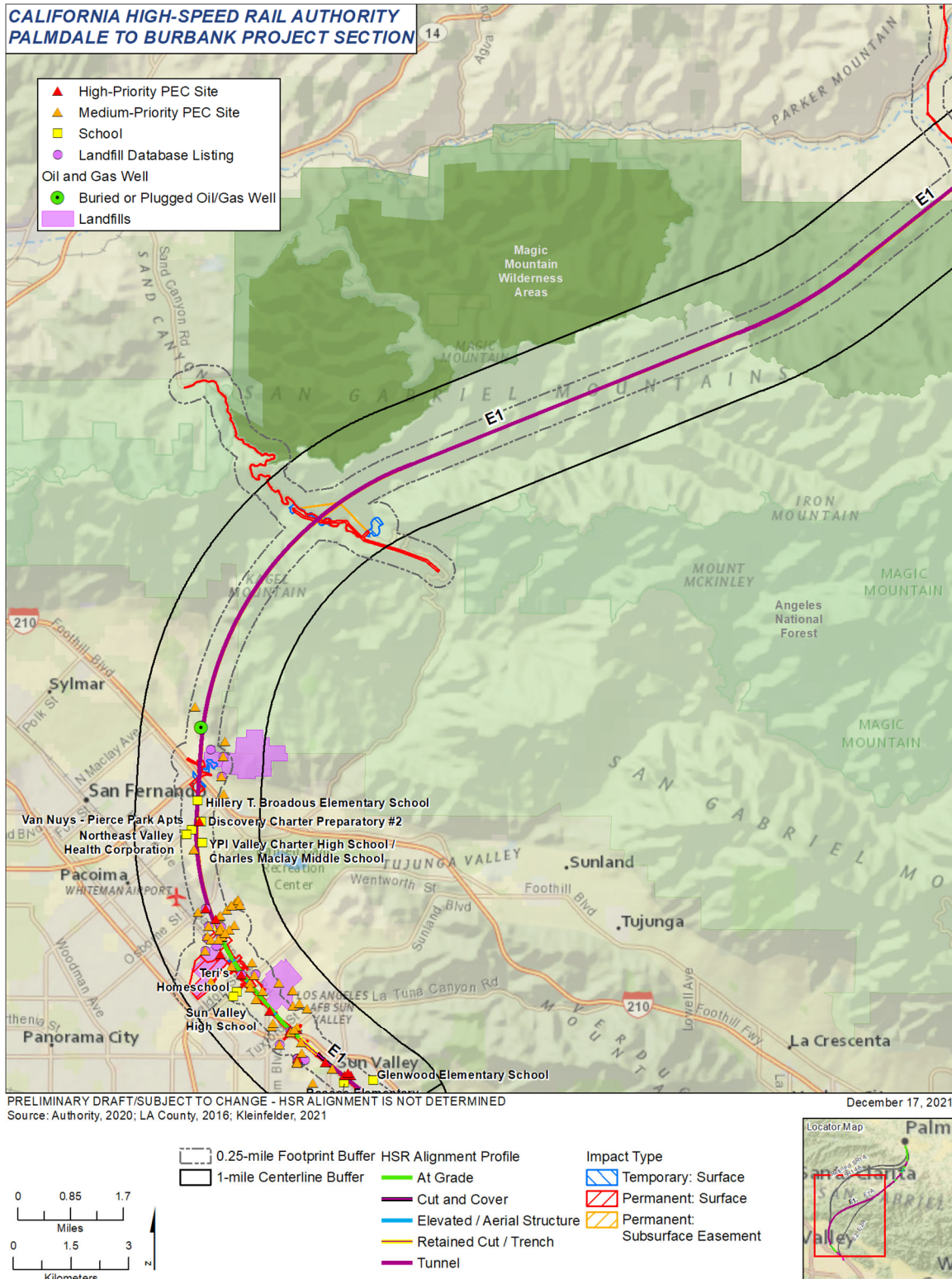


Figure 3.10-A-8 Potential Environmental Concerns, Landfills, Educational Facilities, and Oil/Gas Wells within E1 Build Alternative Resource Study Area (Map 2 of 3)

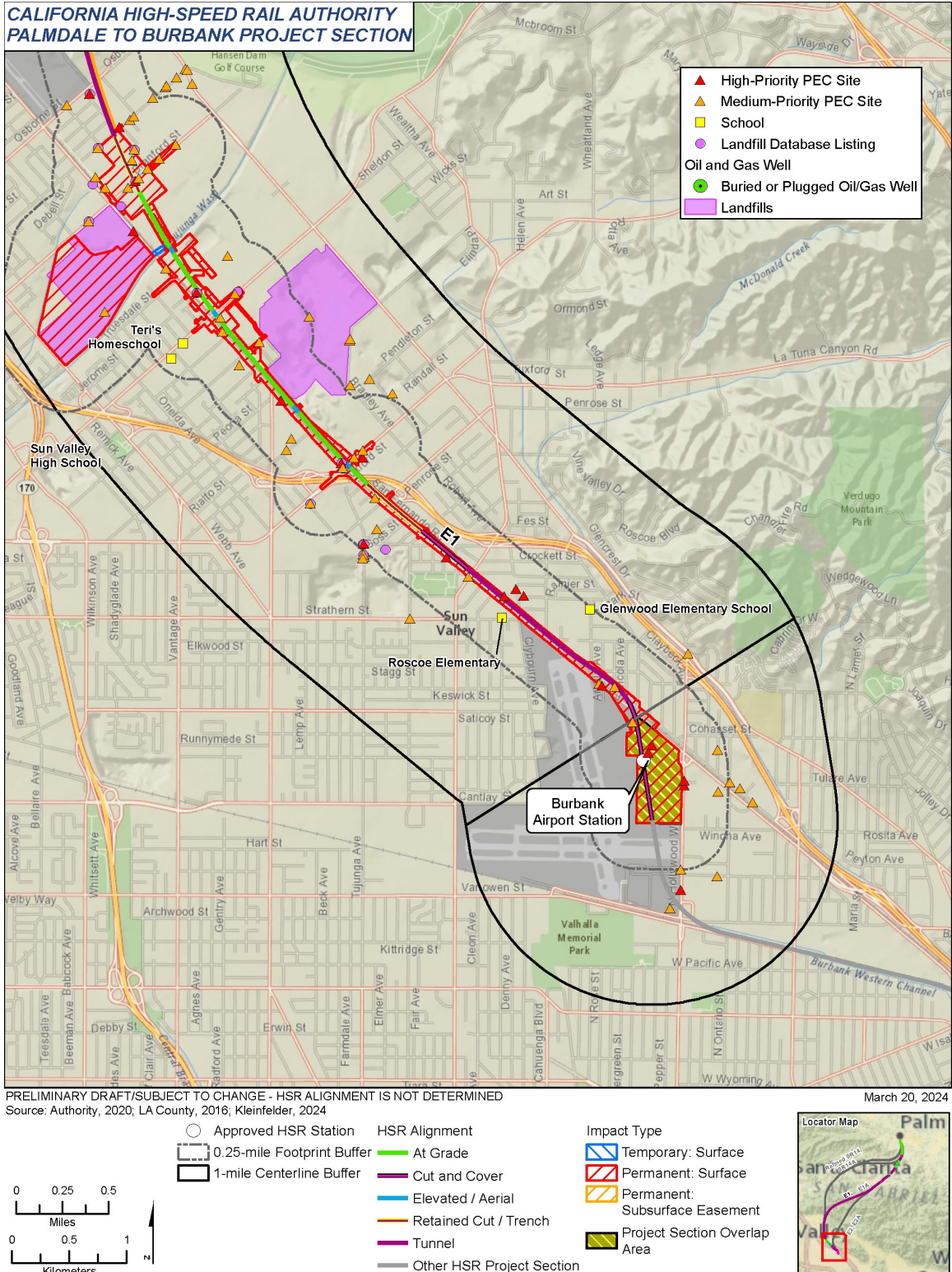


Figure 3.10-A-9 Potential Environmental Concerns, Landfills, Educational Facilities, and Oil/Gas Wells within E1 Build Alternative Resource Study Area (Map 3 of 3)

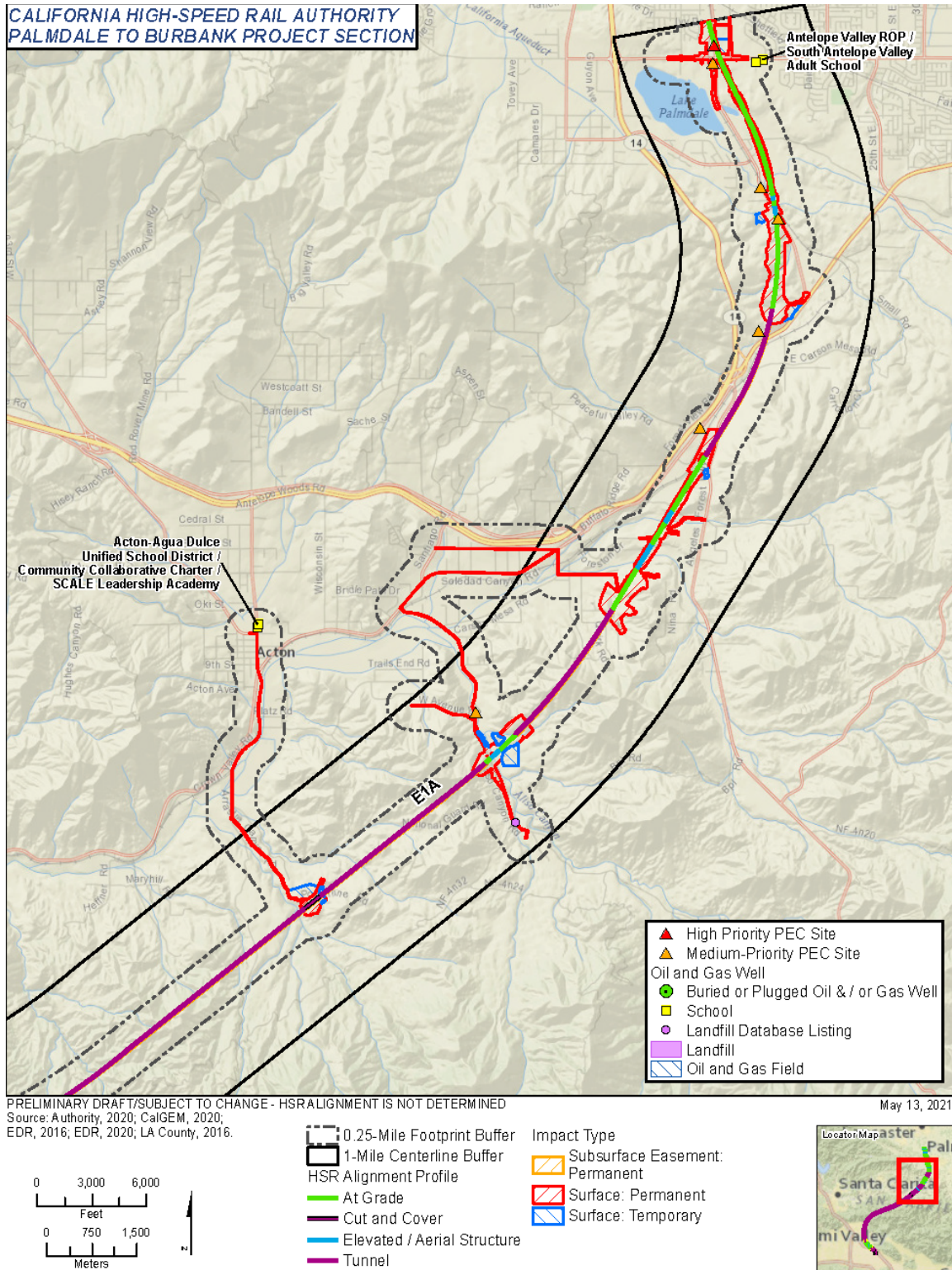


Figure 3.10-A-10 Potential Environmental Concerns, Landfills, Educational Facilities, and Oil/Gas Wells within the E1A Build Alternative RSA (Map 1 of 3)

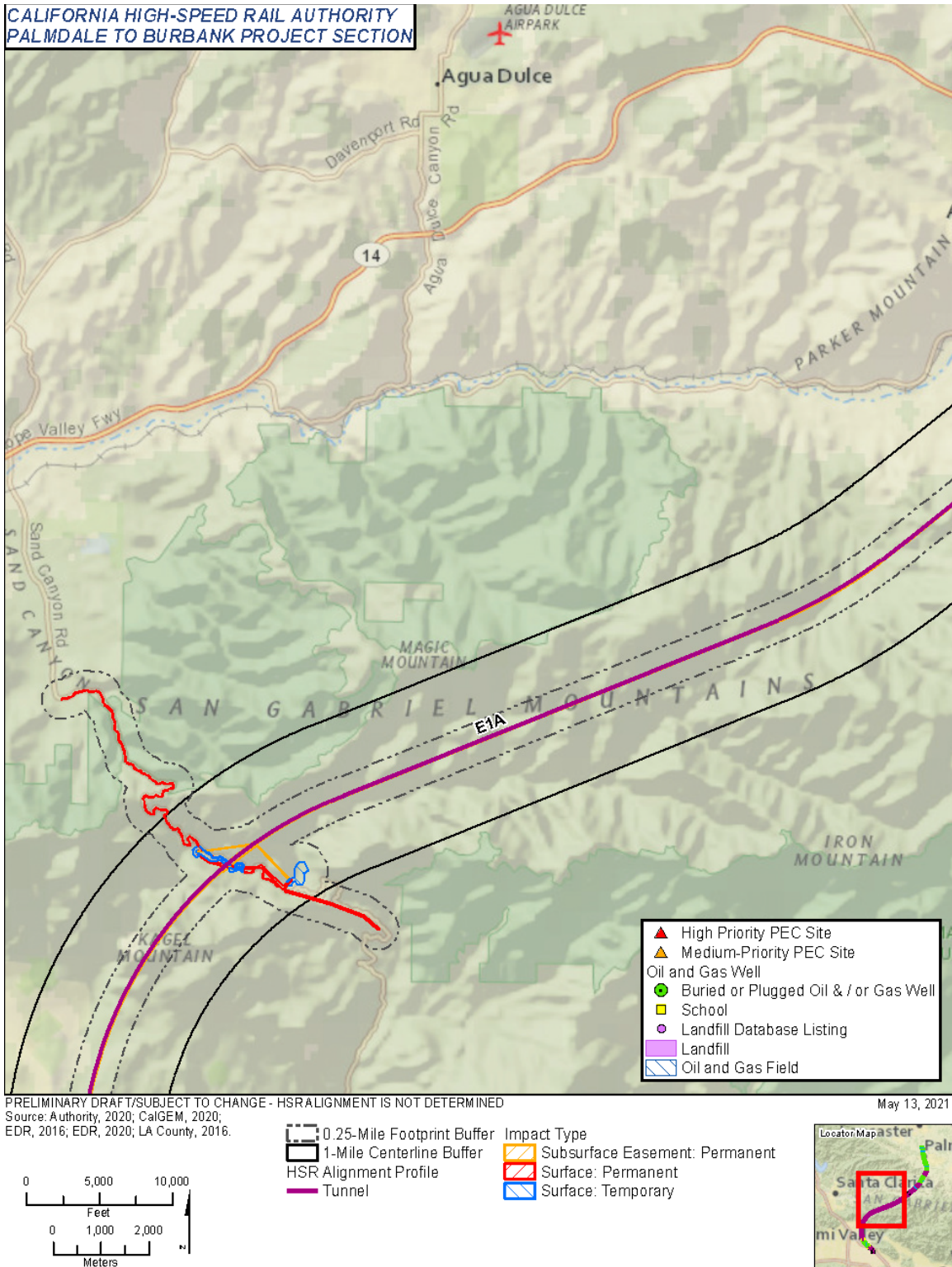


Figure 3.10-A-11 Potential Environmental Concerns, Landfills, Educational Facilities, and Oil/Gas Wells within the E1A Build Alternative RSA (Map 2 of 3)

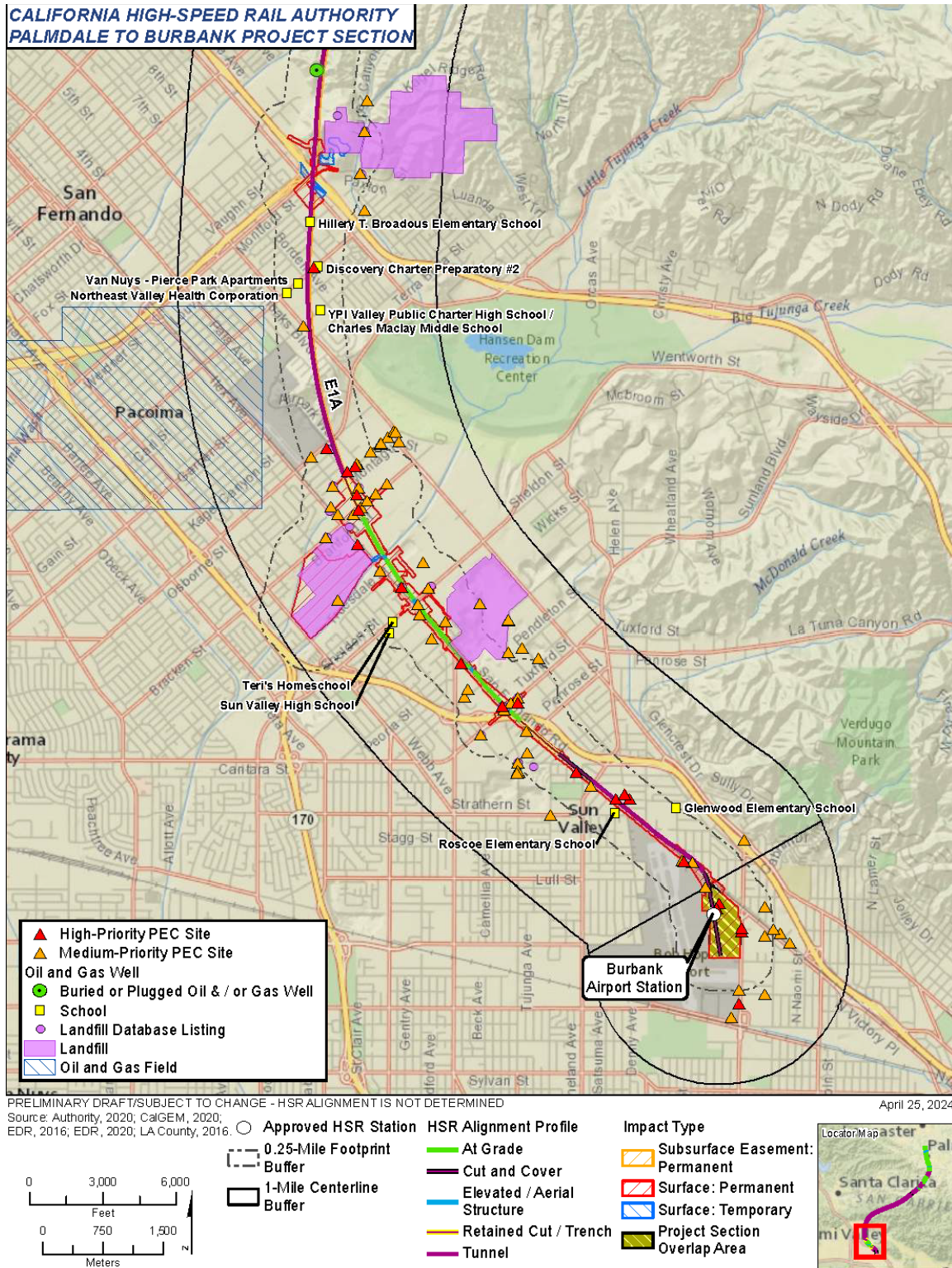


Figure 3.10-A-12 Potential Environmental Concerns, Landfills, Educational Facilities, and Oil/Gas Wells within the E1A Build Alternative RSA (Map 3 of 3)

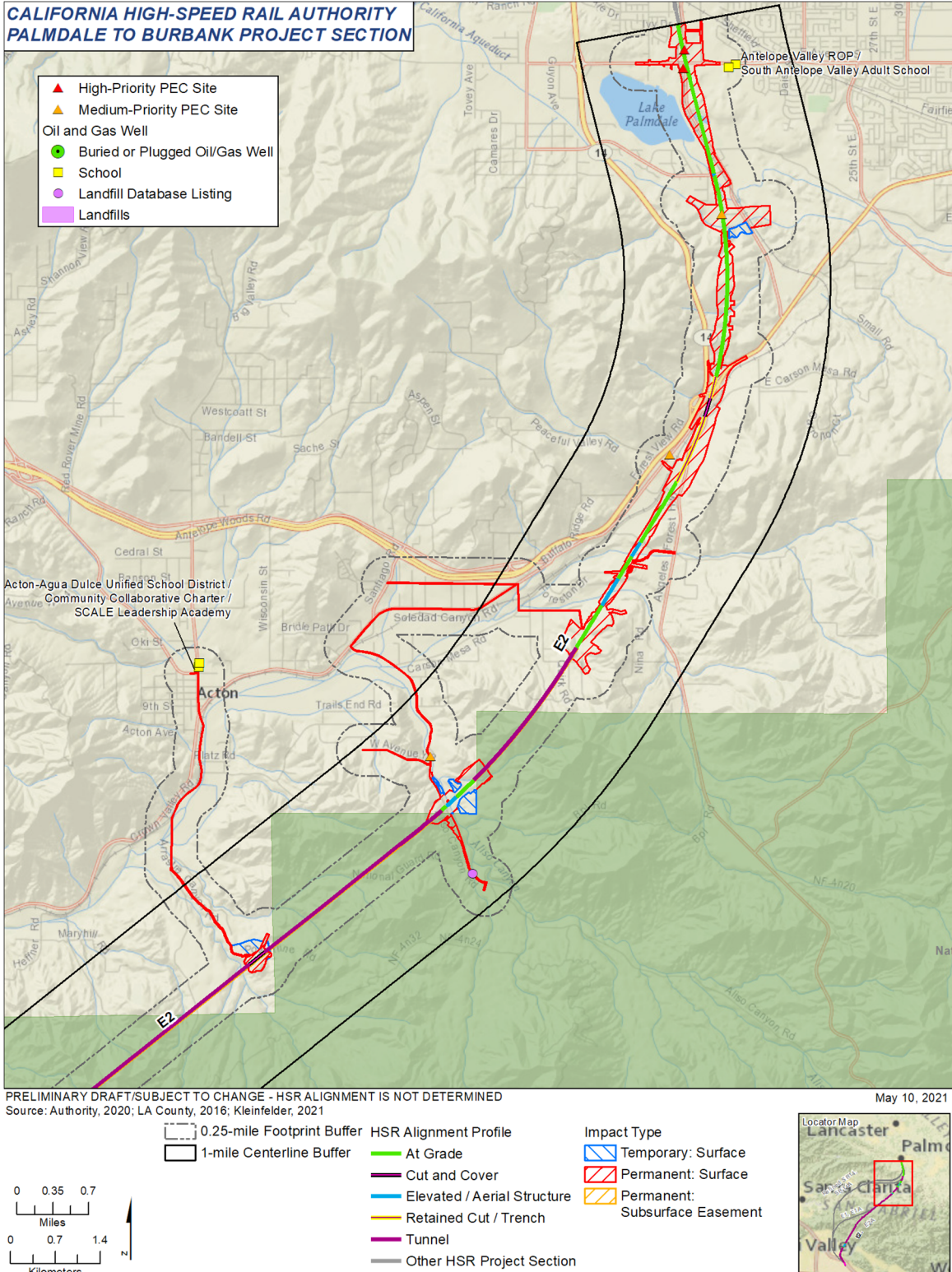
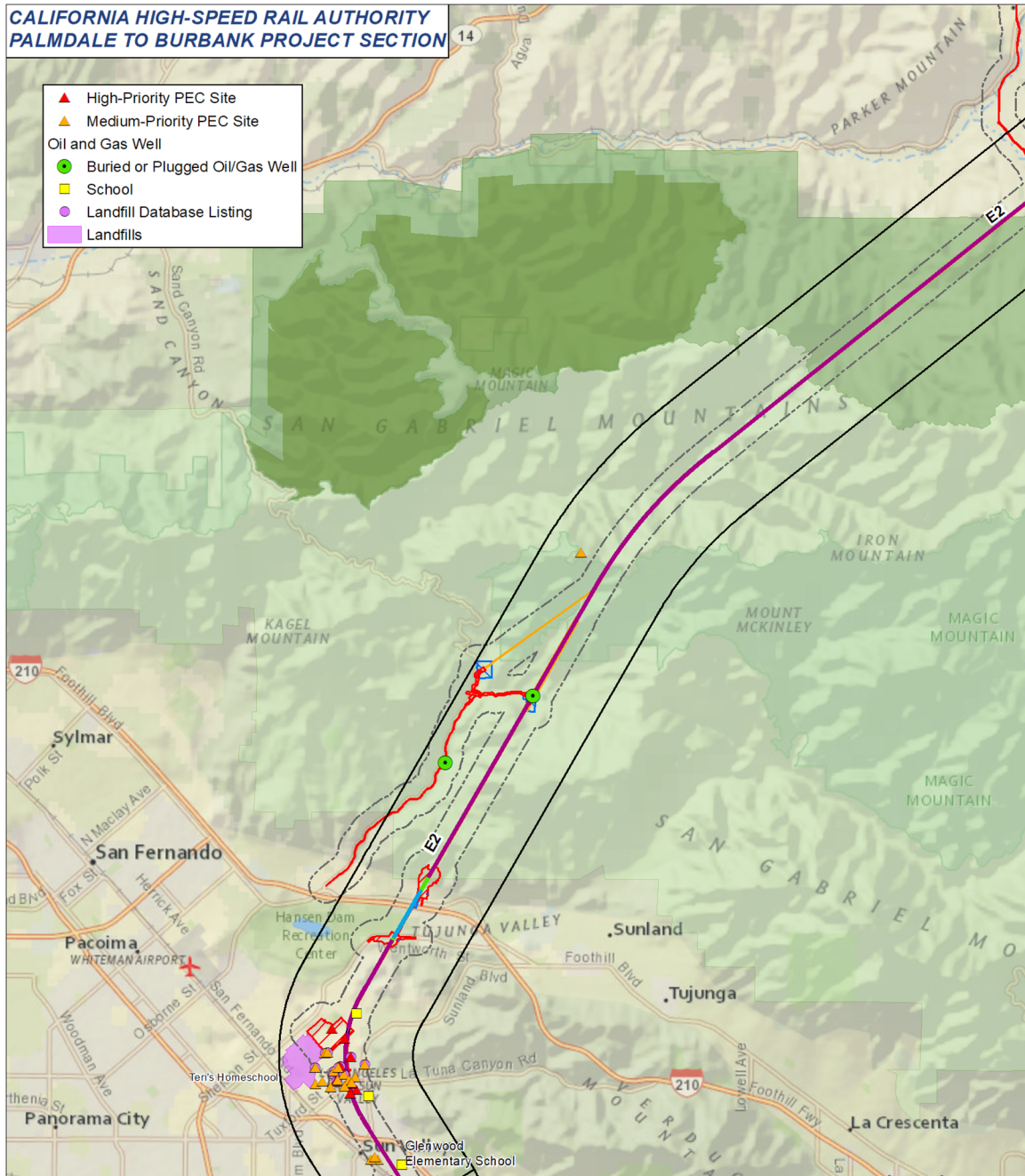


Figure 3.10-A-13 Potential Environmental Concerns, Landfills, Educational Facilities, and Oil/Gas Wells within the E2 Build Alternative RSA (Map 1 of 3)



PRELIMINARY DRAFT/SUBJECT TO CHANGE - HSR ALIGNMENT IS NOT DETERMINED
 Source: Authority, 2020; LA County, 2016; Kleinfelder, 2021
 May 10, 2021

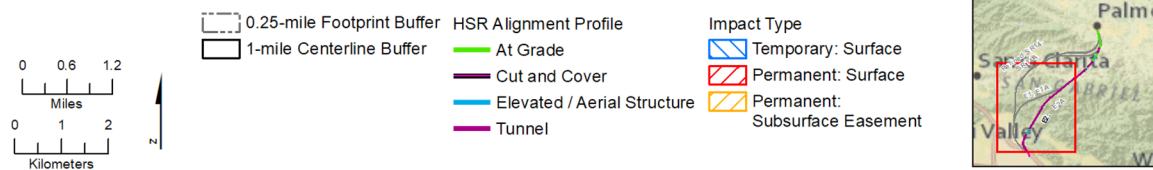
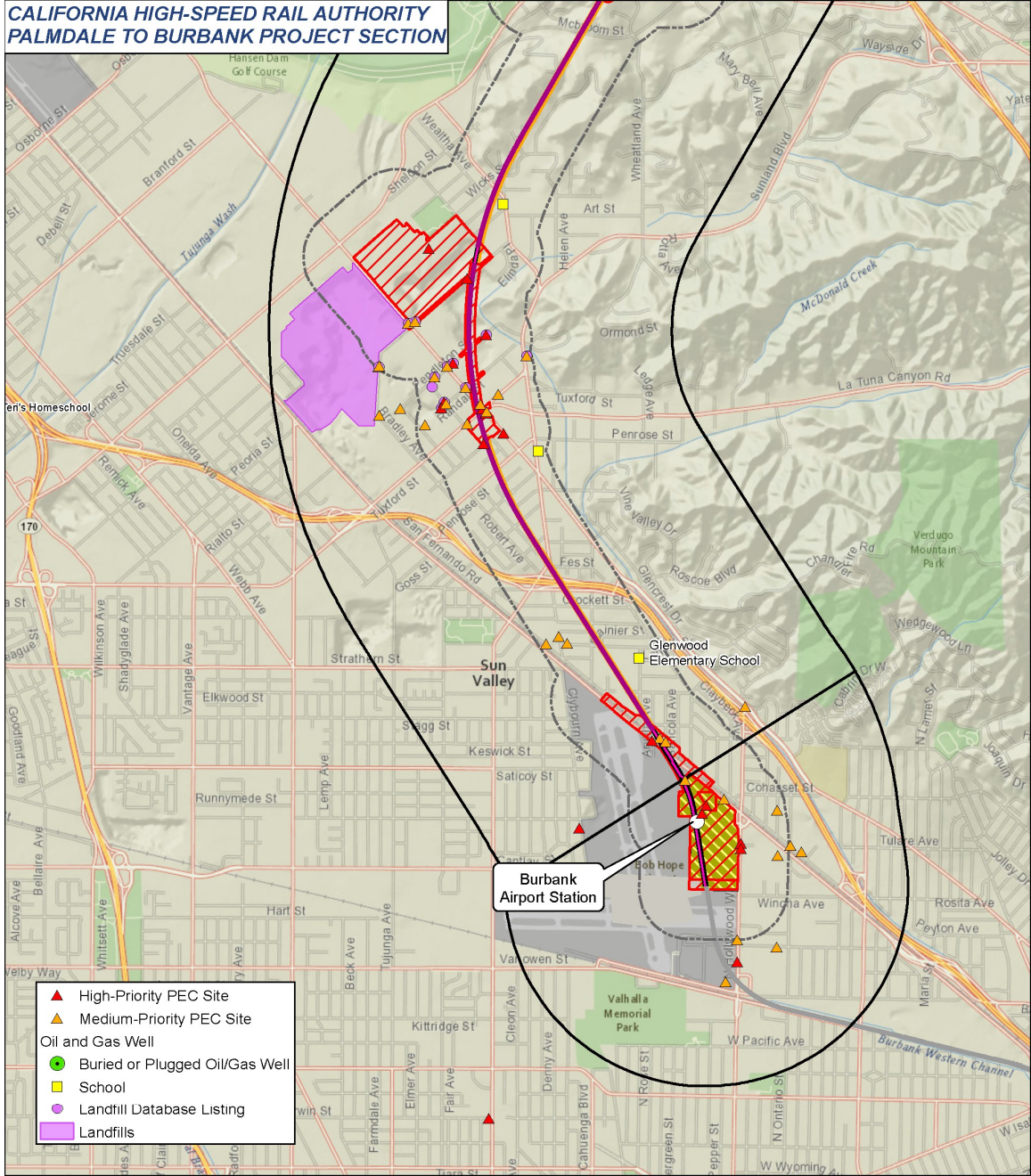


Figure 3.10-A-14 Potential Environmental Concerns, Landfills, Educational Facilities, and Oil/Gas Wells within the E2 Build Alternative RSA (Map 2 of 3)



PRELIMINARY DRAFT/SUBJECT TO CHANGE - HSR ALIGNMENT IS NOT DETERMINED
Source: Authority, 2020; LA County, 2016; Kleinfelder, 2024

March 20, 2024



Figure 3.10-A-15 Potential Environmental Concerns, Landfills, Educational Facilities, and Oil/Gas Wells within the E2 Build Alternative RSA (Map 3 of 3)

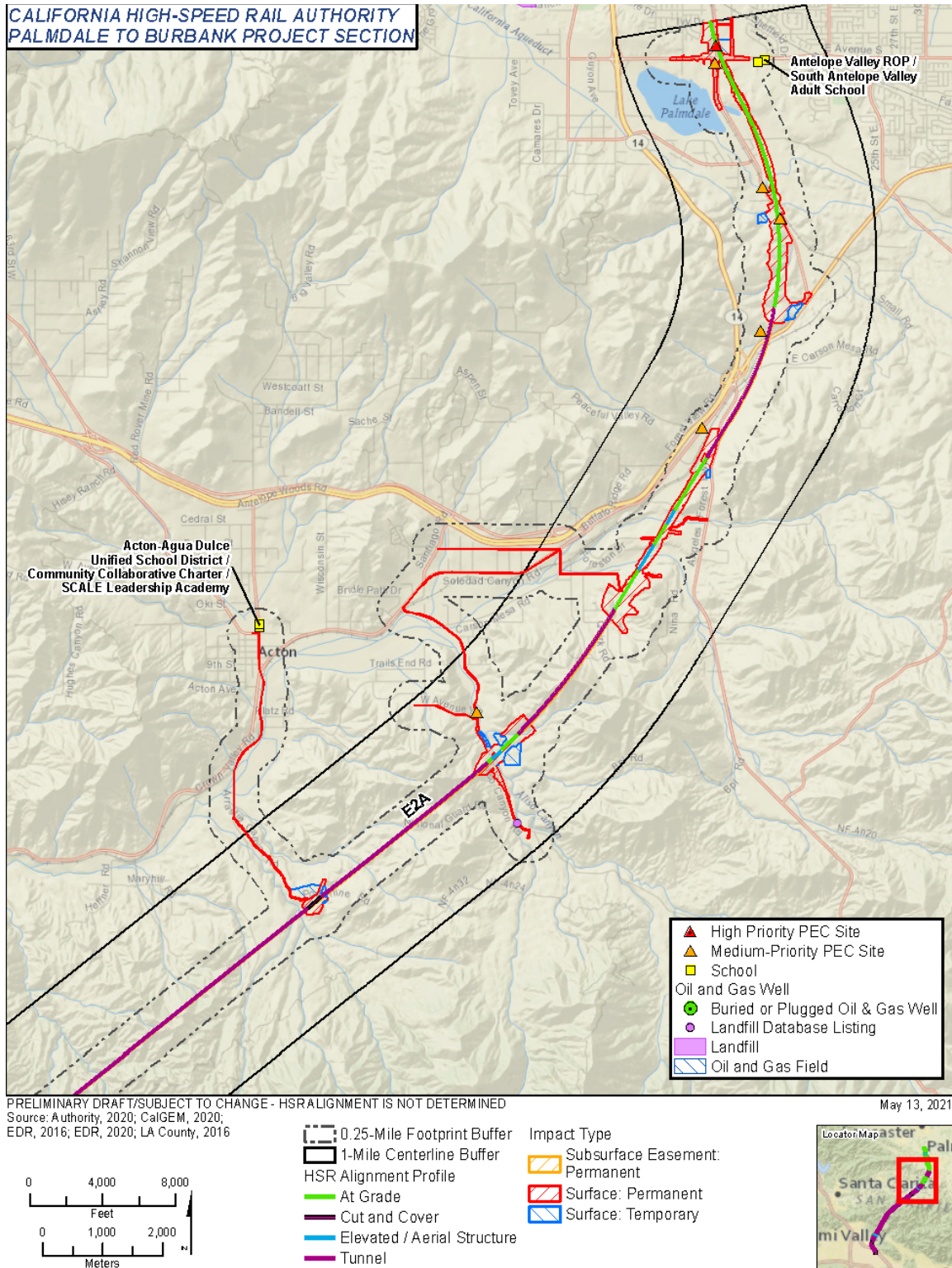


Figure 3.10-A-16 Potential Environmental Concerns, Landfills, Educational Facilities, and Oil/Gas Wells within the E2A Build Alternative RSA (Map 1 of 3)

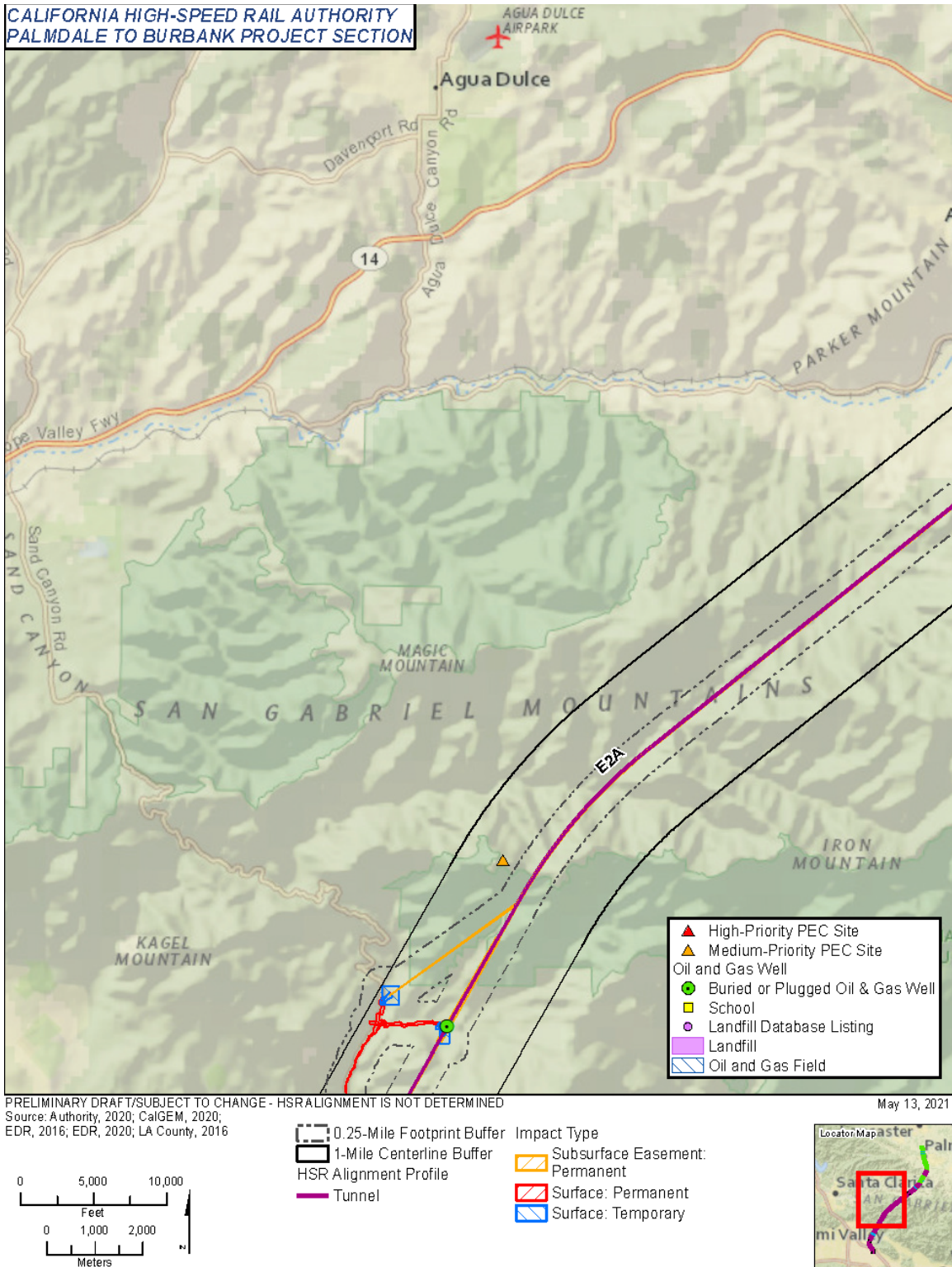


Figure 3.10-A-17 Potential Environmental Concerns, Landfills, Educational Facilities, and Oil/Gas Wells within the E2A Build Alternative RSA (Map 2 of 3)

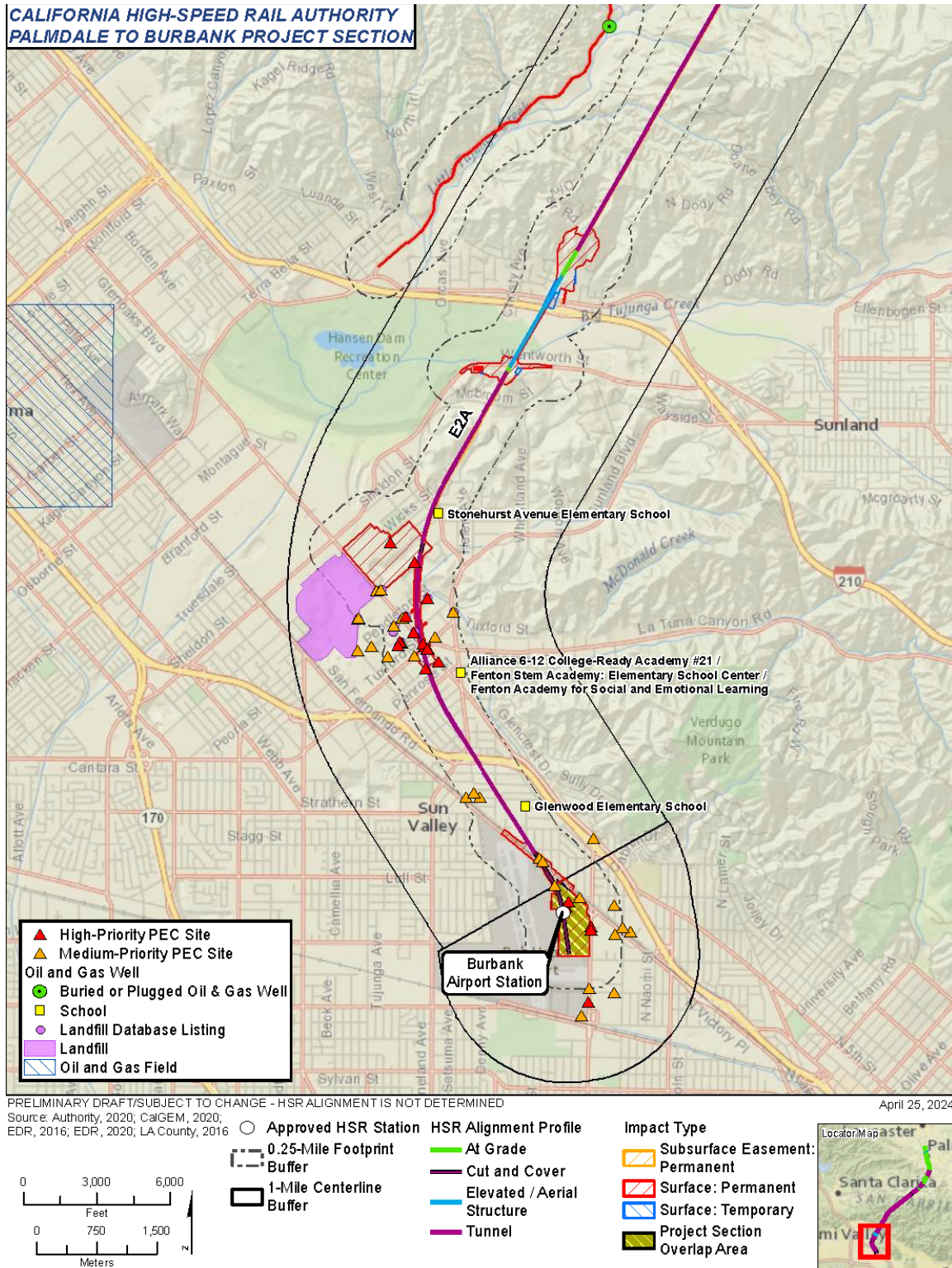
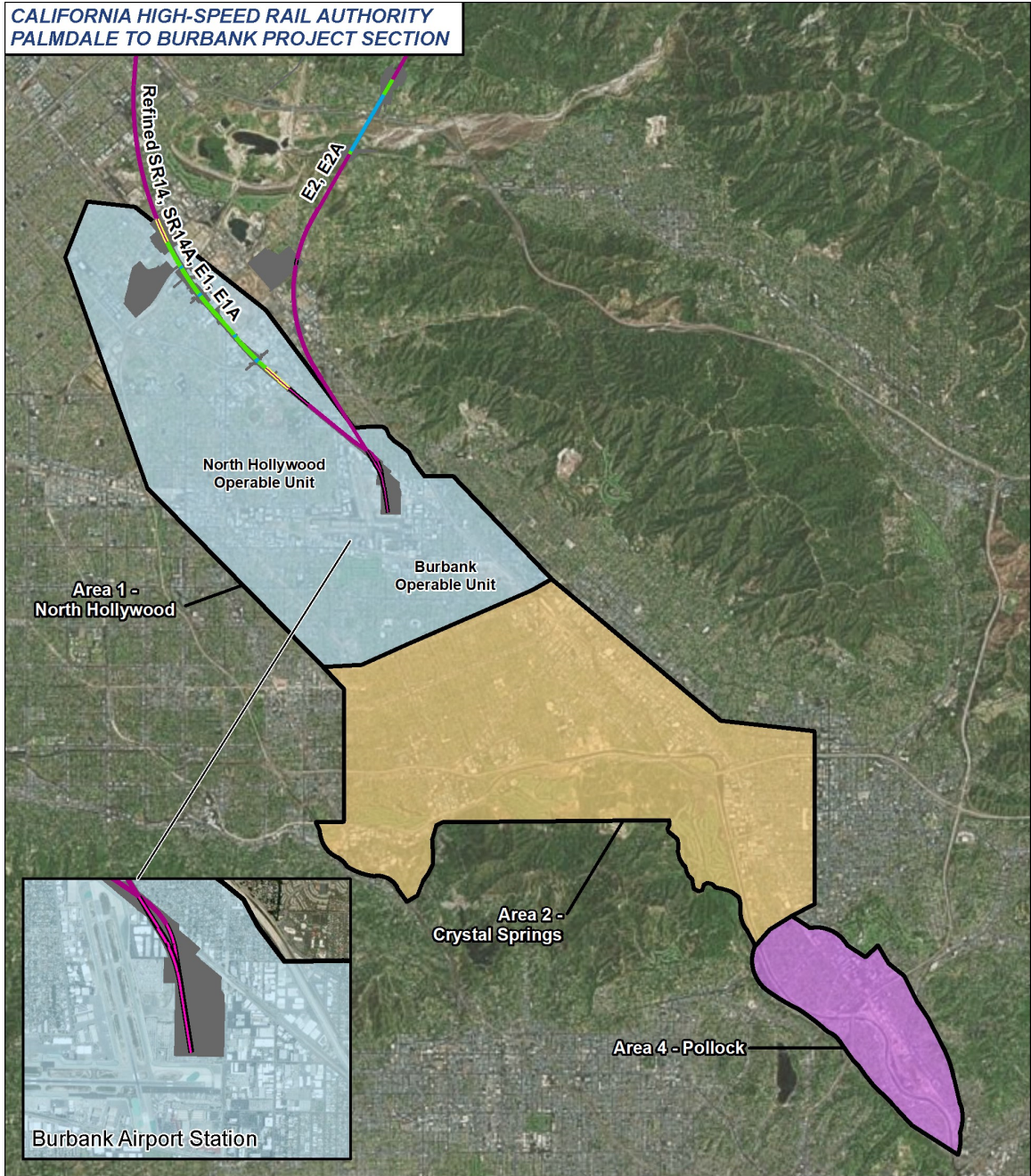


Figure 3.10-A-18 Potential Environmental Concerns, Landfills, Educational Facilities, and Oil/Gas Wells within the E2A Build Alternative RSA (Map 3 of 3)



PRELIMINARY DRAFT/SUBJECT TO CHANGE - HSR ALIGNMENT IS NOT DETERMINED
Source: Authority, 2020; ICF, 2024

January 27, 2024

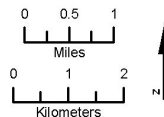
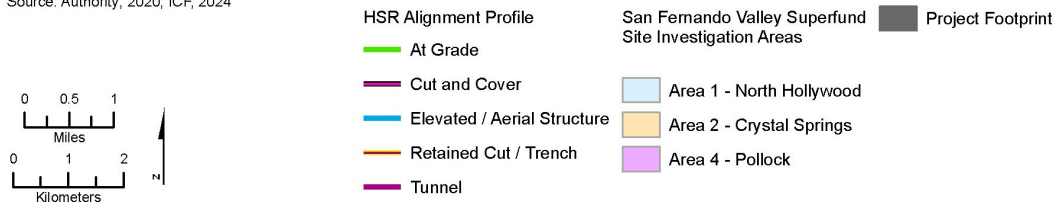


Figure 3.10-A-19 San Fernando Valley Superfund Site

This page intentionally left blank