

APPENDIX 3.19-B

Planned and Potential Transportation Projects

Contents

Tables

- 3.19B-1 Merced Transportation Projects – Merced County RTP and City of Merced CIP
- 3.19B-2 Merced Transportation Projects (Map 2) – Merced County RTP Regionally Funded Projects
- 3.19B-3 Madera County Transportation Projects – Madera County RTP and City of Madera CIP
- 3.19B-4 Madera County Transportation Projects – Madera County RTP
- 3.19B-5 Madera County Transportation Projects – Chowchilla RTP
- 3.19B-6 Fresno Transportation Projects – Fiscally Constrained Fresno FTIP Projects Programmed through 2010
- 3.19B-7 Fresno Transportation Projects – City of Fresno CIP
- 3.19B-8 Fresno Transportation Projects – Fiscally Constrained Candidate Projects through 2030 within 5 Miles of Project Alignments and Station

Figures

- 3.19B-1 Merced Transportation Projects – Merced County RTP and City of Merced CIP
- 3.19B-2 Merced Transportation Projects – Merced County RTP Regionally Funded Projects
- 3.19B-3 Madera County Transportation Projects – Madera County RTP and City of Madera CIP
- 3.19B-4 Madera County Transportation Projects – Madera County RTP
- 3.19B-5 Madera County Transportation Projects – Chowchilla RTP
- 3.19B-6 Fresno Transportation Projects – Fiscally Constrained Fresno FTIP Projects Programmed through 2010
- 3.19B-7 Fresno Transportation Projects – Fresno RTP Urban Area
- 3.19B-8 Fresno Transportation Projects – Fresno RTP County Area

Table 3.19B-1
 Merced Transportation Projects – Merced County RTP and City of Merced CIP

Figure 3.19B-1 Site	Agency	Route	Description
1	Caltrans	SR 59	Passing lanes and shoulders - SR 152 to Mission Ave
2	Caltrans	SR 99/140 interchange	SR 99/140 interchangeImprovements
3	City of	G Street	Widen to 4-lane arterial - from Yosemite Ave to Old Lake Road Dev/Local
4	City of Merced	Cardella Road	New 4-lane arterial - from SR 59 to G Street Dev/Local
5	City of Merced	Gardner Ave	New/widen - Yosemite Ave to Old Lake Road Dev/Local
6	City of Merced	M Street	New transitway - Lehigh Road to Bellevue Road Dev/Local
7	City of Merced	Parsons Ave	New/widen to 4-lane arterial - from Childs Ave to Yosemite Ave Dev/Local
8	City of Merced	R Street	New 4-lane arterial - Yosemite Ave to Bellevue Road Dev/Local
9	City of Merced	Yosemite Ave	New 4-lane arterial - from SR 59 to R Street Dev/Local
10	Merced County	Campus Parkway	New 4-lane arterial - Yosemite Ave to UC Merced (Bellevue Road) Dev/Local
11	City of Merced	Thornton Road	Minor arterial from Hwy 140 to Mission Ave <i>Right-of-way acquisition only</i>
12	City of Merced	Mission Ave	Upgrade to divided arterial from Thornton Road to Mission Interchange
13	City of Merced	Yosemite Ave	Upgrade to minor arterial from Gardner to Campus Parkway
14	City of Merced	Childs Ave	Upgrade to minor arterial from B Street to Kibby Road
15	City of Merced	Hwy 59 south	Widen to 4 lanes with continuous left turn lane from Childs Ave to Mission Ave
16	City of Merced	Hwy 59 north	Widen to 4 lanes with continuous left turn lane from Black Rascal Creek to Yosemite Ave
17	City of Merced	Bellevue Road	Upgrade to major arterial from Hwy 59 to Lake Road
18	City of Merced	13th and 14th Streets	One-way couplet from R Street to G Street
19	City of Merced	Santa Fe and G Street Railroad Crossing	Replace existing at-grade crossing with grade-separated

Figure 3.19B-1 Site	Agency	Route	Description
20	City of Merced	Parsons Ave Frontage Road	From Mission to Childs
21	Merced County Association of Governments	Hwy 140	Widen to arterial between Santa Fe and Campus Parkway
<p>Bridges – City of Merced CIP (not mapped)</p> <ul style="list-style-type: none"> • Cardella Road and Fahrens Creek • G Street at Fahrens Creek • M Street at Fahrens Creek • Bellevue Road at Fahrens Creek • Gardner Road at Fahrens Creek <p>CIP = capital improvement program RTP = regional transportation plan</p> <p>Sources: Merced County Association of Governments Regional Transportation Plan (2007) City of Merced Capital Improvements Program (2009-2014); Merced County Budget, Fiscal Year July 2008 - June 2009</p>			

Table 3.19B-2
 Merced Transportation Projects (Map 2) –
 Merced County RTP Regionally Funded Projects

Figure 3.19B-2 Site (unless stated otherwise)	Agency	Route	Description
Tier 1 (funded)			
A	Caltrans	SR 99	Mission Freeway
B	Caltrans	SR 99	South of Livingston Freeway
C	Caltrans	SR 99	North of Atwater Freeway
D	Caltrans	SR 99	Arboleda Freeway
E	Caltrans	SR 99	Plainsburg Freeway
Tier 1			
F	Caltrans	SR 99	To 6 lanes Livingston-Delhi
G	Caltrans/Local	Campus Pkwy	Highway 99 to Yosemite Ave
H	Caltrans/MCAG	SR 152	Los Banos Bypass
I	MCAG	SR 59	Widening 16thOlive
J	Caltrans/MCAG	SR 140	Bradley Overhead
K	Caltrans/MCAG/ Local	SR 59	Realign (Atwater Freeway to Merced Expressway)
Tier 2 (unfunded)			
1	MCAG	Winton Pkwy	North extension
2	MCAG	Bellevue Rd	Connection to 99 Westside
Figure B-1, Site 12	MCAG	Mission Ave	Improvement
3	Caltrans	SR 99	Merced Freeway 6 lane
4	Caltrans	SR 99	Merced-Atwater Freeway 6 lane
5	Caltrans	SR 99	Atwater Freeway 6 lane

Figure 3.19B-2 Site (unless stated otherwise)	Agency	Route	Description
6	Caltrans	SR 59	Widen to 4/5 lanes – SR 99 to SR 152
Figure B-1, Site 21	Caltrans	SR 140	Widen to 4 lanes – to Campus Parkway
7	Caltrans	SR 165	Widening north of Hilmar
8	Caltrans	SR140	SR 140/33 truck route
9	Caltrans	SR 165	Hilmar project
10	Caltrans	SR 165	Widening/bypass Los Banos
Figure B-1, Site 17	Caltrans	Bellevue Rd	Widening
Figure B-1, Site 19	MCAG	G St	RR grade separation
11	MCAG	Santa Fe Ave	Widening from SR 59 to Winton
Figure B-1, Sites 1 and 15	Caltrans	SR 59	Southern realignment
MCAG = Merced County Association of Governments Source: Merced County Association of Governments (MCAG) Regional Transportation Plan (2007)			

Table 3.19B-3
 Madera County Transportation Projects – Madera County RTP and City of Madera CIP

Figure 3.19B-3 Site	Agency	Route	Description
9	City of Madera	SR 99	SR 145 Interchange-Reconstruct Interchange
10	City of Madera	Ellis Ave	Granada to Road 26-Recon Street and new SR 99 OC at Ellis Ave
11	City of Madera	4th St	K Street to Lake-2 to 4 lanes
12	City of Madera	Lake St	Green to Ellis-Widen to 4 lanes
13	City of Madera	4th St	Interchange at SR 99-IC Recon
14	City of Madera	Schnoor Ave	Trevor to Sunset-Restripe to 4 lanes
15	City of Madera	Cleveland Ave	Tozer to Lake-Restripe to 4 lanes
16	City of Madera	Cleveland Ave	Lake to Road 26 (Country Club Drive)-Restripe to 4 lanes
17	City of Madera	Airport Dr	Ave 17 to Yeager-Restripe to 4 lanes
18	City of Madera	Yeager Road	Airport to Falcon-Restripe to 4 lanes
19	City of Madera	Gateway Dr	Cleveland to Yosemite-Widen to 4 lanes
20	City of Madera	Gateway Dr (SR 145)	Yosemite to SR 99-Widen to 4 lanes
21	City of Madera	Cleveland Ave	Schnoor to SR 99-2 to 4 lanes
22	City of Madera	Lake St	4th to Cleveland-2 to 4 lanes
23	City of Madera	Sunrise Ave	B Street to Road 28-2 to 4 lanes
24	City of Madera	Cleveland Ave	Road 26 to SR 99-4 to 6 lanes
<p>Notes: RTP = regional transportation plan CIP = capital improvement program</p>			

Table 3.19B-4
 Madera County Transportation Projects – Madera County RTP

Figure 3.19B-4 Site	Agency	Route	Description
1	Caltrans	SR 99	Ashlan Ave in Fresno County to Ave 7 – 4-Lane Freeway to 6-Lane Freeway
2	Caltrans	SR 99	Ave 12 Interchange – Reconstruct Interchange
3	Caltrans	SR 99	Ave 12 to Ellis Ave – 4-Lane Freeway to 6-Lane Freeway and IC at Ellis Ave
4	Caltrans	SR 99	Ave 7 to Ave 12 – 4-Lane Freeway to 6-Lane Freeway
5	Caltrans	SR 99	Ellis Ave to Ave 17 – 4-Lane Freeway to 6-Lane Freeway and Recon IC at Ave 17
6	Caltrans	SR 99	SR 233 Interchange – Reconstruct Interchange
7	Caltrans	SR 99	SR 152 Interchange – New Interchange and Rail Crossing
8	Caltrans	SR 99	SR 152 to Merced County Line – 4-Lane Freeway to 6-Lane Freeway and Recon IC at Ave 24
13	Madera County	SR 99	SR 152 and Avenue 22 – Widen Freeway between SR 152 and south of Avenue 21½; build interchange at Avenue 22
16	Madera County	SR 99	4th Street Interchange – Reconstruct Interchange
28	Madera County	Children’s Blvd	Road 40-1/2 to Peck Blvd – Widen to 6 lanes
29	Madera County	Children’s Blvd	SR 41 NB ramps to Peck Blvd – Widen to 8 lanes
30	Madera County	Children’s Blvd	SR 41 to Lanes Bridge – Widen to 8 lanes
31	Madera County	AVE 12	SR 41 to North Rio Mesa Blvd – Widen to 6 lanes
32	Madera County	Ave 10	Road 40-1/2 to SR 41 – Widen to 4 lanes
33	Madera County	Lanes Bridge	At Children’s Blvd – Widen to 6 lanes
34	Madera County	Children’s Blvd	Between SR 41 ramps – Widen to 6 lanes
35	Madera County	North Rio Mesa	Rio Mesa Blvd to Ave 15 at SR 41 – Widen to 4 lanes
36	Madera County	Road 30-1/2	Ave 12 to Ave 13 – Widen to 4 lanes

Figure 3.19B-4 Site	Agency	Route	Description
37	Madera County	41	NB on-ramp/SR 41 at Children's Blvd – Widen to 2 lanes
38	Madera County	41	Madera County Lane to Ave 10 – Widen to 6 lanes
39	Madera County	41	Ave 10 to Ave 12 – 4-lane freeway and IC at Ave 12
40	Madera County	41	SR 145 to Road 200 – Construct passing lanes
41	Madera County	41	Road 420 to SR 49 south of Oakhurst – Widen to 4 lanes
42	Madera County	Ave 12	Road 38 to SR 41 – Widen to 4 lanes
43	Madera County	Road 29	Olive to Ave 13 – Widen to 4 lanes
44	Madera County	Ave 12	SR 99 to Road 32 – Widen to 4 lanes
45	Madera County	Road 29	Ave 12 to Ave 13 – Widen to 4 lanes and realign
<p>Note: RTP = regional transportation plan</p>			

Table 3.19B-5
 Madera County Transportation Projects – Chowchilla RTP

Figure 3.19B-5 Site	Agency	Route	Description
25	City of Chowchilla	Robertson	15th Street to Palm Parkway – Restripe 2 to 4 Lanes
26	City of Chowchilla	Fig Tree	SR 99 Overcrossing – 2 Lane OC to Chowchilla Blvd
27	City of Chowchilla	Avenue 26	SR 99 to Coronado – Widen to 4 Lanes
Sources: Madera County 2006 Regional Transportation Plan, Madera County Transportation Commission (May 2007) Note: RTP = regional transportation plan			

Table 3.19B-6
 Fresno Transportation Projects – Fiscally Constrained Fresno FTIP Projects Programmed through 2010

Figure 3.19B-6 Site	Agency	Route	Description
1	City of Fresno	North and Maple Intersection	In Fresno County – North and Maple intersection improvements. Construct left turn lane for eastbound traffic.
2	City of Fresno	Central and Willow Intersection	In Fresno County – Central and Willow intersection improvements. Construct left turn lanes and pavement improvements and remove a 4-way stop.
3	City of Fresno	Chestnut Ave and Kings Canyon Road	In the City of Fresno – At Intersection of Chestnut Ave and Kings Canyon Road, install traffic flow improvements including dual left-turn lanes and intersection improvements.
4	City of Fresno	Marks and Webber Ave Intersection	In the City of Fresno – At Marks and Webber Ave Intersection, install traffic flow improvements including ultimate build of intersection and new signal.
5	City of Fresno	Willow and Shepherd Avenues	In the City of Fresno – Improve traffic operations and relieve congestion at intersection of Willow and Shepherd Ave Install traffic signal and modify approaches. Install median noses, curb returns with wheelchair ramps.
6	City of Fresno	Cedar at Shaw	In the City of Fresno – Cedar at Shaw Traffic Flow Improvements. Traffic flow improvements including installation of dual NB and SB lanes and separate right turn lanes.
7	Fresno County Transportation Authority	Academy Ave	Academy Road-Rural Program – Widen existing 2-lane facility to 4 lanes on SR 180 between SR 180 and Shaw Ave and 2 lanes between Barstow Ave and SR 168.
8	Fresno County Transportation Authority	Academy Ave	Academy Ave-Rural Program – Construct/Improve 2-lane facility between Mountain View and Manning, and 4-lane between Manning and SR 180.
9	Fresno County Transportation Authority	SR 180	Unconstructed to 4-lane freeway from Brawley Ave to Marks Ave and 6-lane freeway from Marks Ave to east of West Ave.
10	City of Fresno	Fresno Ave	Fresno Ave at Sierra Ave – Additional turning lane and light turn phasing.
11	City of Fresno	Herndon Ave	Herndon from SR 99 to Weber and Golden State Blvd – Addition of through lanes (2LU to 4LD), turn lanes, bus bays. Modification of at-grade railroad crossing. Addition of medians and landscaping.

Figure 3.19B-6 Site	Agency	Route	Description
12	City of Fresno	Willow Ave	From Nees to Shepherd – Operational improvements to relieve congestion and reduce delay on Willow Ave This project will add a second southbound lane within the project limits.
13	Caltrans	SR 41	41 In Fresno-at McKinley Ave and Shields Ave – Widen on-ramps and install ramp metering systems.
14	Caltrans	SR 41	41 In Fresno-Bullard Ave to Herndon Ave and northbound Herndon off-ramp -add auxiliary lane.
15	Caltrans	SR 180	180 In and near Fresno from Clovis Ave to Temperance Ave – Construct 6-lane freeway from Clovis Ave to Fowler Ave and 4-lane freeway from Fowler Ave to Temperance Ave.
<p>Note: FTIP=Fresno Transportation Improvement Program</p>			

Table 3.19B-7
 Fresno Transportation Projects – City of Fresno CIP

Figure 3.19B-6 Site	Agency	Route	Description
A	City of Fresno	Herdon Ave	From Valentine to Marks –Widen to 6 lanes
B	City of Fresno	Ashlan Ave	Cornelia to Blythe –Widen
C	City of Fresno	Fruit Ave	Clinton to Dakota –Bike lane
D	City of Fresno	Shaw	Polk to SR 99 –Widen
E	City of Fresno	Herdon Ave	Golden State to Polk –Widen to 4 lanes

Sources:
 Fresno Council of Governments Regional Transportation Plan (2007)
 City of Fresno Bicycle, Pedestrian, & Trails Master Plan (City of Fresno 2010)
 City of Fresno Public Works by Council District (City of Fresno 2011b)

Note:
 CIP= capital improvement program

Table 3.19B-8

Fresno Transportation Projects – Fiscally Constrained Candidate Projects through 2030 within 5 Miles of Project Alignments and Station

Figures 3.19B-7 and 3.19B-8 Site	Agency	Route	Description
1	Caltrans	SR 180	SR 41 to SR 168 – Construct Braided Ramps
2	City of Fresno	Polk	Olive to McKinley –2 LD to 4 LD
3	City of Fresno	Peach	North to Jensen –2 LD to 4 LD
4	City of Fresno	West	Kearney to Whites Bridge –2 LU to 4 LU
5	City of Fresno	Whites Bridge	State Route 180 E/O Brawley to Valentine –2 LU to 4 LD
6	Caltrans	SR 41	Ashlan to Shaw –Add 1 NB Auxiliary Lane
7	Caltrans	SR 41	Divisadero to O Street –Add SB Auxiliary Lane
8	Caltrans	SR 41	McKinley to Shields –Add 1 NB and 1 SB Auxiliary Lane
9	Caltrans	SR 99	Central and Chestnut Interchange –Upgrade Interchange
10	Caltrans	SR 145	SR 180 to Shaw –2 LU to 4 LU
11	City of Fresno	Hughes	Church to Whites Bridge – 2 LU to 4 LU
12	City of Fresno	Herndon	Marks to Valentine –4 LD to 6 LD
13	City of Fresno	Herndon	SR 99 to Weber –2 LU to 4 LD
14	City of Fresno	Herndon	Valentine to Milburn –4 LD to 6 LD
15	City of Fresno	Herndon	Polk to Weber –2 LU to 4 LD
16	City of Fresno	Herndon	Polk to Weber –4 LD to 6 LD
17	City of Fresno	Herndon	Milburn to Polk –4 LD to 6 LD
18	City of Fresno	Veteran’s Blvd	Ashlan to Gettysburg –New 6 LD Superarterial
19	City of Fresno	Veteran’s Blvd	Gettysburg to Barstow –New 6 LD Superarterial

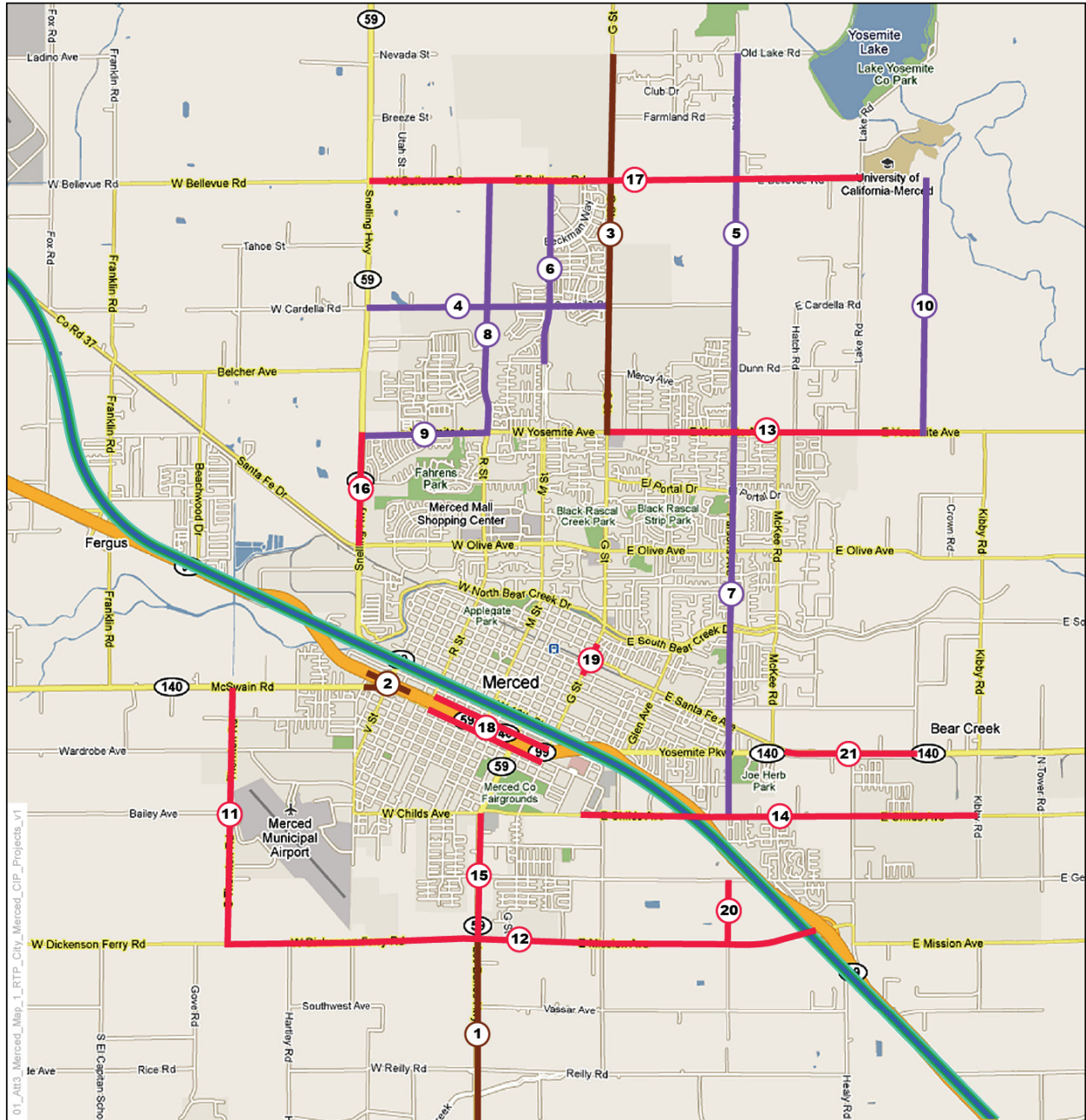
Figures 3.19B-7 and 3.19B-8 Site	Agency	Route	Description
20	City of Fresno	Veteran's Blvd	Barstow to Bullard-Bryan –New 6 LD Superarterial
21	City of Fresno	Veteran's Blvd	Bullard-Bryan to Herndon –New 6 LD Superarterial
22	Caltrans	SR 41	Ashlan to Shields –Add 1 NB Auxiliary Lane
23	Caltrans	SR 41	Shaw to Bullard –1 NB Auxiliary Lane
24	Caltrans	SR 41	McKinley to Shields –Widen on Ramps at Both Interchanges
25	Caltrans	SR 41	Bullard to Herndon –Construct NB Auxiliary Lane
26	City of Fresno	Ashlan	Grantland to Polk –2 L to 4 LD
27	City of Fresno	Motel Drive	Herndon to Ashlan –2 LD to 4 LD
28	City of Fresno	Shields	Cornelia to Parkway –2 LU to 4 LD
29	City of Fresno	West	Jensen to Kearney –2 LU to 4 LD
30	City of Fresno	Hughes	Neilsen to McKinley –2 LU to 4 LD
31	City of Fresno	Marks	Jensen to Whites Bridge –2 LU to 4 LD
32	City of Fresno	Marks	Neilsen to McKinley –2 LU to 4 LD
33	City of Fresno	Jensen	Marks to Fruit –2 LU to 4 LD
34	City of Fresno	H Street	Belmont to Ventura –2 LU to 4 LD
35	Caltrans	SR 180 West	Brawley to Hughes/West –Unconstructed to 4-Lane Freeway between Brawley and Marks and 6 lanes from Marks to Hughes/West
36	City of Fresno	Kings Canyon	Chestnut to Fowler –2 LU to 6 LD
37	City of Fresno	Polk	Gettysburg to Shaw –2 LU to 4 LD
38	City of Fresno	Clovis	Kings Canyon to McKinley –4 LD to 6 LD
39	City of Fresno	Marks	McKinley to Parkway –2 LU to 4 LD

Figures 3.19B-7 and 3.19B- 8 Site	Agency	Route	Description
40	City of Fresno	Brawley	Palo Alto to Herndon –2 LU to 4 LD
41	City of Fresno	Polk	Shields to Gettysburg –2 LU to 4 LD
42	City of Fresno	Weber	Marty to Clinton –2 LU to 4 LD
43	City of Fresno	Peach	Butler to Belmont –2 LU to 4 LD
44	City of Fresno	Peach	Jensen to Butler –2 LU to 4 LD
45	City of Fresno	Ashlan	Polk to SR 99 –2 LU to 4 LD
46	City of Fresno	Cedar	Belmont to SR 180 –Widen to 6 Lanes
47	City of Fresno	Ashlan	Grade separation at UPRR and SR 99 Interchange –Interchange Improvements
48	City of Fresno	Brawley	S of Shaw to Ashlan –2 LU to 4 LD
49	City of Fresno	Polk	McKinley to Shields –2 LU to 4 LD
50	City of Fresno	Weber	Belmont to Olive –2 LU to 4 LD
51	City of Fresno	Cedar	Grant to Belmont –4 LD to 6 LD
52	City of Fresno	Grantland	Shields to Ashlan –2 LU to 6 LD
53	City of Fresno	Jensen	Cherry to Clovis –4 LD to 6 LD
54	City of Fresno	McKinley	Grantland to Golden State –2 LU to 4 LD – Widen SR 99 Bridge
55	City of Fresno	North	Cedar to Chestnut –2 LU to 4 LU
56	City of Fresno	Shaw	Veterans Blvd to Golden State –2 LU to 6 LD
57	City of Fresno	Shields	Grantland to Cornelia –2 LU to 4 LD
58	City of Fresno	Jensen	Fruit to Martin Luther King Blvd –2 LU to 4 LD
59	City of Fresno	North	Orange to Cedar – 2 LU to 4 LD – Improve SR 99 Interchange

Figures 3.19B-7 and 3.19B-8 Site	Agency	Route	Description
60	City of Fresno	Whites Bridge	Valentine to Fruit – 2 LU to 4 LD
61	City of Fresno	Shaw	Garfield to Grantland Diagonal – 2 LU to 4 LD
62	City of Fresno	SR 99 at Monterey Street	Broadway to Golden State – Update closed bridge structure – Closed 6 LD to Open 4 LD
63	Caltrans	SR 99	Fresno to Clinton – Add NB and SB Auxiliary Lanes
64	Caltrans	SR 99	Ashlan to Madera County line –Widen from 4-Lane Freeway to 6-Lane Freeway
65	Caltrans	SR 41	Divisadero to Shields – 6-Lane Freeway to 8-Lane Freeway and Widen SB off-ramp at Divisadero
66	Caltrans	SR 99	Interchange at Grantland Diagonal – Construct Interchange
67	Caltrans	SR 99	Interchange at Shaw – Improve Interchange
68	City of Fresno	Shields	At SR 99 – Construct Overcrossing
69	Caltrans	SR 99	Jensen to Bullard – 6-Lane Freeway to 8 Lane Freeway
70	Caltrans	SR 41	Shields to Ashlan – 7 Lane Freeway to 8 Lane Freeway Additional NB lane added in 2015
71	County of Fresno	Chestnut	American to SR 99 – Widen to 4 LD Highway
72	County of Fresno	Central	SR 99 to Clovis – 2 L to 4 LD
73	County of Fresno	Central	Golden State to Clovis – 2 LU to 4 LD
74	Caltrans	SR 180 West	Dickenson to Brawley – 2 LU to 4 LU Expressway
75	County of Fresno	Central	Maple to Golden State – 2 LU to 4 LD
76	County of Fresno	Jensen	West to Brawley – Widen from 2 LU to 4-Lane Divided Highway
77	County of Fresno	Shaw	Garfield to Dickenson – 2 LU to 4 LD
78	County of Fresno	Shaw	Dickenson to West of Biola – Widen to 4-Lane Divided Highway
79	County of Fresno	Jensen	Brawler to Dickenson – 2 LU to 4 LD

Figures 3.19B-7 and 3.19B-8 Site	Agency	Route	Description
80	Caltrans	SR 41	Interchange at American – Add Ramps to Interchange at American
81	Caltrans	SR 41	Ashlan to Shaw – 6 Lane Freeway to 8 Lane Freeway
82	Caltrans	SR 41	Interchange at Central – Add Interchange at Central
83	Caltrans	SR 41	Shaw to Bullard – 7 Lane Freeway to 8 Lane Freeway
84	Caltrans	SR 41	Bullard to Herndon – 6 Lane Freeway to 8 Lane Freeway
85	Caltrans	SR 99	Jensen to Central – 6 Lane to 8 Lane
86	City of Fresno	Polk	Olive to Belmont – Unconstructed to 4 LD
87	Caltrans	SR 99	SR 99 and Cedar/North Ave – Upgrade Interchange
88	City of Fresno	Divisadero	SR 41 on/off ramps – Additional SB off lane and Dual Lefts on Divisadero at NB on-ramp
89	City of Fresno	Ashlan	Garfield to Grantland– Unconstructed to 4 LD
90	City of Fresno	Elm	Central to North– 2 LU to 4 LD
91	City of Fresno	Grantland	Shaw to Parkway– 2 LU to 4 LD
92	City of Fresno	Grantland	Shaw to Veterans– 2 LU to 4 LU
93	City of Fresno	Grantland	Belmont to Shields– 2 LD to 4 LD
94	City of Fresno	Marks	North to Jensen–2 LU to 4 LU
95	City of Fresno	Marks	Weber to Dakota–2 LU to 3 LU
96	City of Fresno	North	Walnut to Hwy 41–2 LU to 4 LD
97	County of Fresno	SR 99	Widen to four lanes between SR 99 and Yosemite Avenue
98	County of Fresno	SR 99 interchange at proposed Veterans Blvd	Build new interchange and rail crossings and new Veterans Boulevard extension from Shaw Avenue to Herndon Avenue

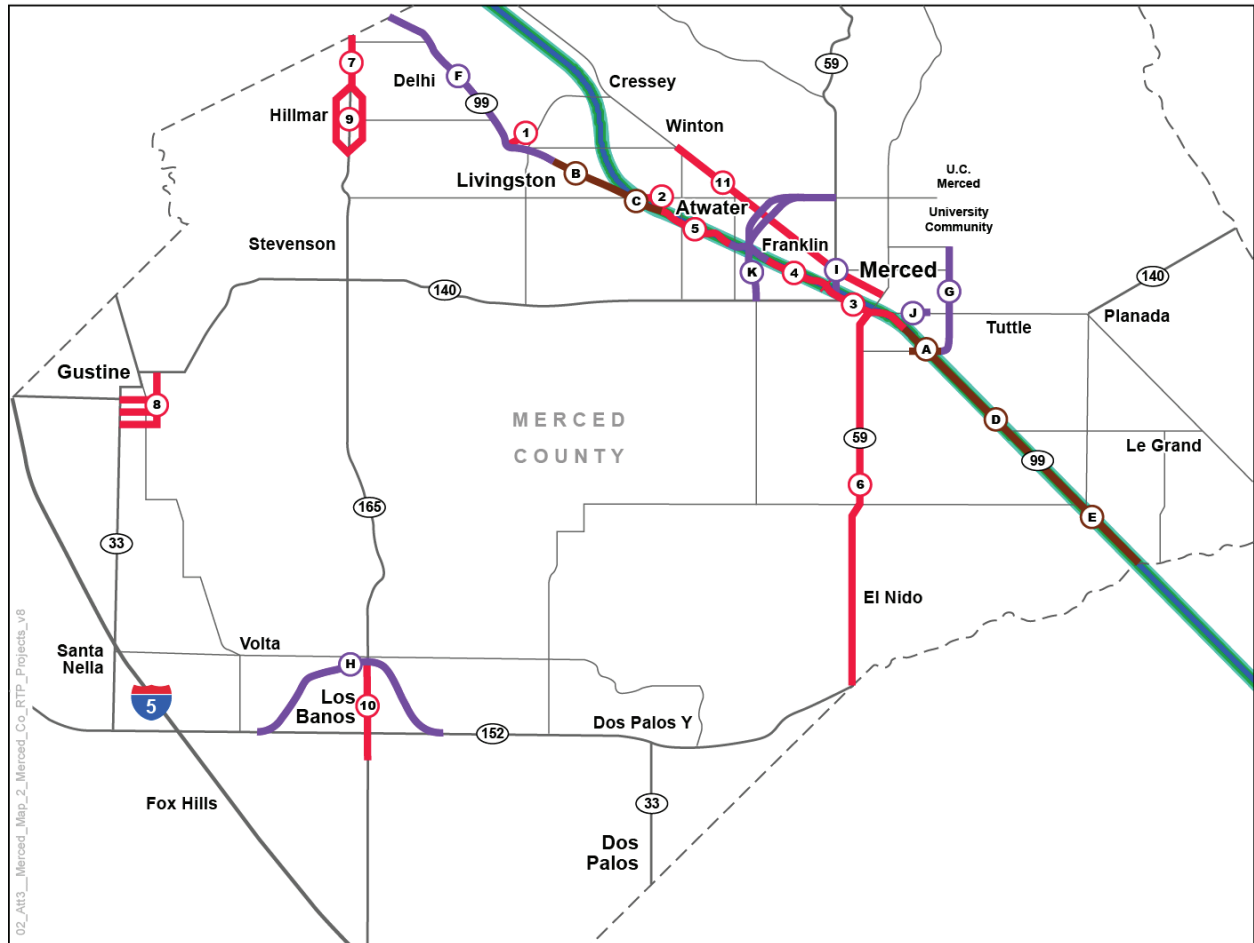
Figures 3.19B-7 and 3.19B- 8 Site	Agency	Route	Description
99	County of Fresno	SR 99	Widen to 10-lane freeway (2 phases) between Clinton Avenue and Ashlan Avenue
100	County of Fresno	SR 41	Build southbound auxiliary lane between El Paso Avenue and Friant Road
101	County of Fresno	SR 41	Build auxiliary lanes between O Street and Shaw Avenue
102	County of Fresno	SR 99	Update closed bridge structure
<p>Sources: Fresno Council of Governments Regional Transportation Plan (2007)</p> <p>Notes: LU = lanes undivided LD =lanes divided</p>			



March 23, 2012

- | | |
|--|---|
| <ul style="list-style-type: none"> UPRR/SR 99/BNSF Hybrid Alternative UPRR/SR 99 Alternative BNSF Alternative Regional Transportation Plan RTP Project RTP/City of Merced CIP Project City of Merced CIP Project | <ul style="list-style-type: none"> 1. SR 59 (SR 152 to Mission) 2. SR 99 and SR 140 Interchange 3. G St (Yosemite to Old Lake Rd) 4. Cardella Rd (SR 59 to G St) 5. Gardner Ave (Yosemite to Old Lake Rd) 6. M St (Lehigh to Bellevue) 7. Parsons Ave (Childs to Yosemite Ave) 8. R St (Yosemite to Bellevue Rd) 9. Yosemite (SR 59 to R St) 10. Campus Pkwy (Yosemite to UC Merced) 11. Thornton Rd (SR 40 to Mission) 12. Mission Ave (Thornton Rd to Mission Interchange) 13. Yosemite (Gardner to Campus Pkwy) 14. Childs Ave (B St to Kibby Rd) 15. SR 59 (Childs to Mission) 16. SR 59 (Black Rascal Creek to Yosemite) 17. Bellevue Rd (SR 59 to Lake Rd) 18. 13th and 14th Streets (One-Way Couplet) 19. Santa Fe and G St Railroad Crossing 20. Parsons Ave Frontage Rd (Mission to Childs) 21. SR 140 (Santa Fe to Campus Pkwy) |
|--|---|

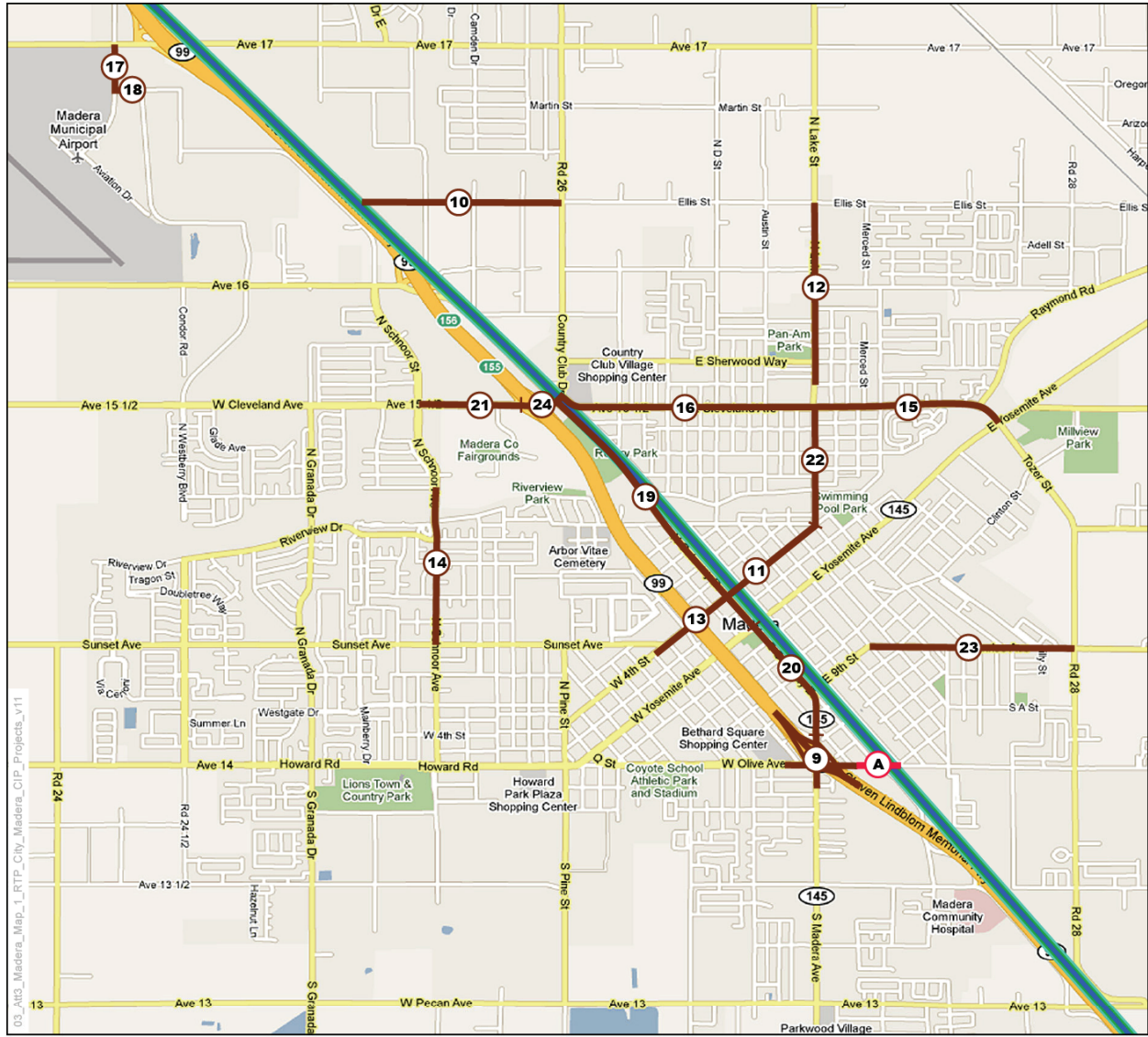
Figure 3.19B-1
 Merced Transportation Projects –
 Merced County RTP and
 City of Merced CIP



March 23, 2012

- | | | |
|---|--|--|
| <ul style="list-style-type: none"> UPRR/SR 99/BNSF Hybrid Alternative UPRR/SR 99 Alternative BNSF Alternative County Boundary Funded Projects Tier 1 Projects Tier 2 (Unfunded) | <p>Tier 1 (Funded)</p> <ul style="list-style-type: none"> A. SR 99 (Mission Freeway) B. SR 99 (South of Livingston Freeway) C. SR 99 (North of Atwater Freeway) D. SR 99 (Aboleda Freeway) E. SR 99 (Plainsburg Freeway) <p>Tier 1</p> <ul style="list-style-type: none"> F. SR 99 (Livingston to Delhi - 6 Lanes) G. Campus Parkway (SR 99 to Yosemite Ave) H. SR 152 (Los Banos Bypass*) I. SR 59 (Widening - 16th to Olive) J. SR 140 (Bradley Overhead) K. SR 59 (Realign - Atwater-Merced Expressway) | <p>Tier 2 (Unfunded)</p> <ul style="list-style-type: none"> 1. Winton Parkway (North Extension) 2. Bellevue Rd (Connection to SR 99 Westside) 3. SR 99 (Merced Freeway, 6 Lanes) 4. SR 99 (Merced-Atwater Freeway, 6 Lanes) 5. SR 99 (Atwater Freeway, 6 Lanes) 6. SR 59 from SR 99 to SR 152 (with #1 and #15 from Merced Transportation Projects Map 1) 7. SR 165 (North of Hillmar) 8. SR 140/SR 33 Truck Route 9. SR 165 (Hillmar Project) 10. SR 165 (Los Banos, Widening/Bypass) 11. Santa Fe Ave (SR 59 to Winton, Widening) |
|---|--|--|

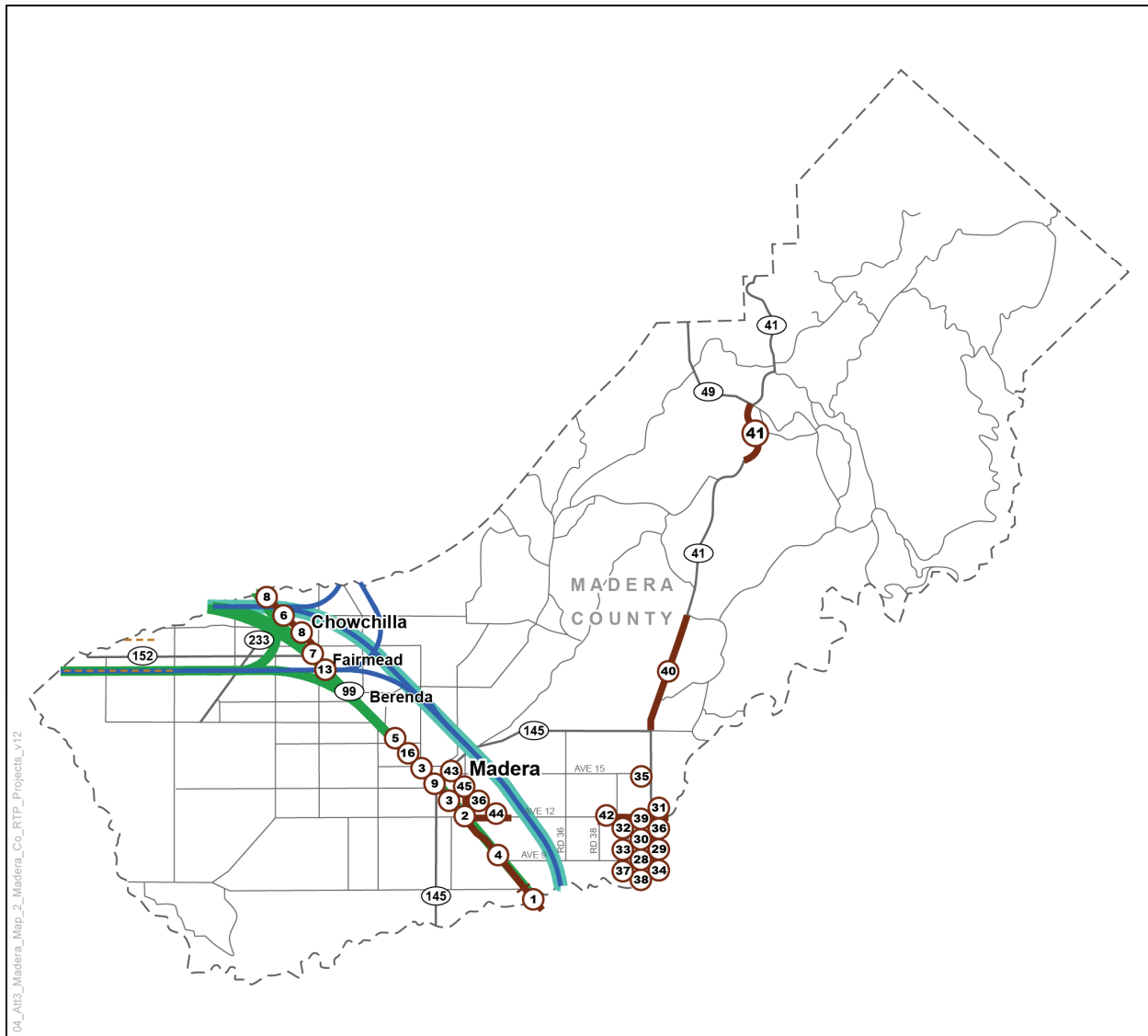
Figure 3.19B-2
 Merced Transportation Projects –
 Merced County RTP Regionally
 Funded Projects



March 23, 2012

- | | | |
|--|--|--|
| <ul style="list-style-type: none"> UPRR/SR 99/BNSF Hybrid Alternative UPRR/SR 99 Alternative BNSF Alternative Regional Transportation Plan Project CIP Project | <ul style="list-style-type: none"> 9. SR 99 (SR 145 Interchange) 10. Ellis Ave (Granada to Road 26) 11. 4th (K St to Lake) 12. Lake (Green to Ellis) 13. 4th (SR 99 Interchange) 14. Schnoor (Trevor to Sunset) 15. Cleveland (Tozer to Lake) 16. Cleveland (Lake to Road 26) 17. Airport (Ave 17 to Yeager) 18. Yeager (Airport to Falcon) 19. Gateway (Cleveland to Yosemite) 20. Gateway - SR 145 (Yosemite to SR 99) 21. Cleveland (Schnoor to SR 99) 22. Lake (4th to Cleveland) 23. Sunrise (B St to Road 28) 24. Cleveland (Road 26 to SR 99) | <ul style="list-style-type: none"> A. Olive Ave (G St to E St) |
|--|--|--|

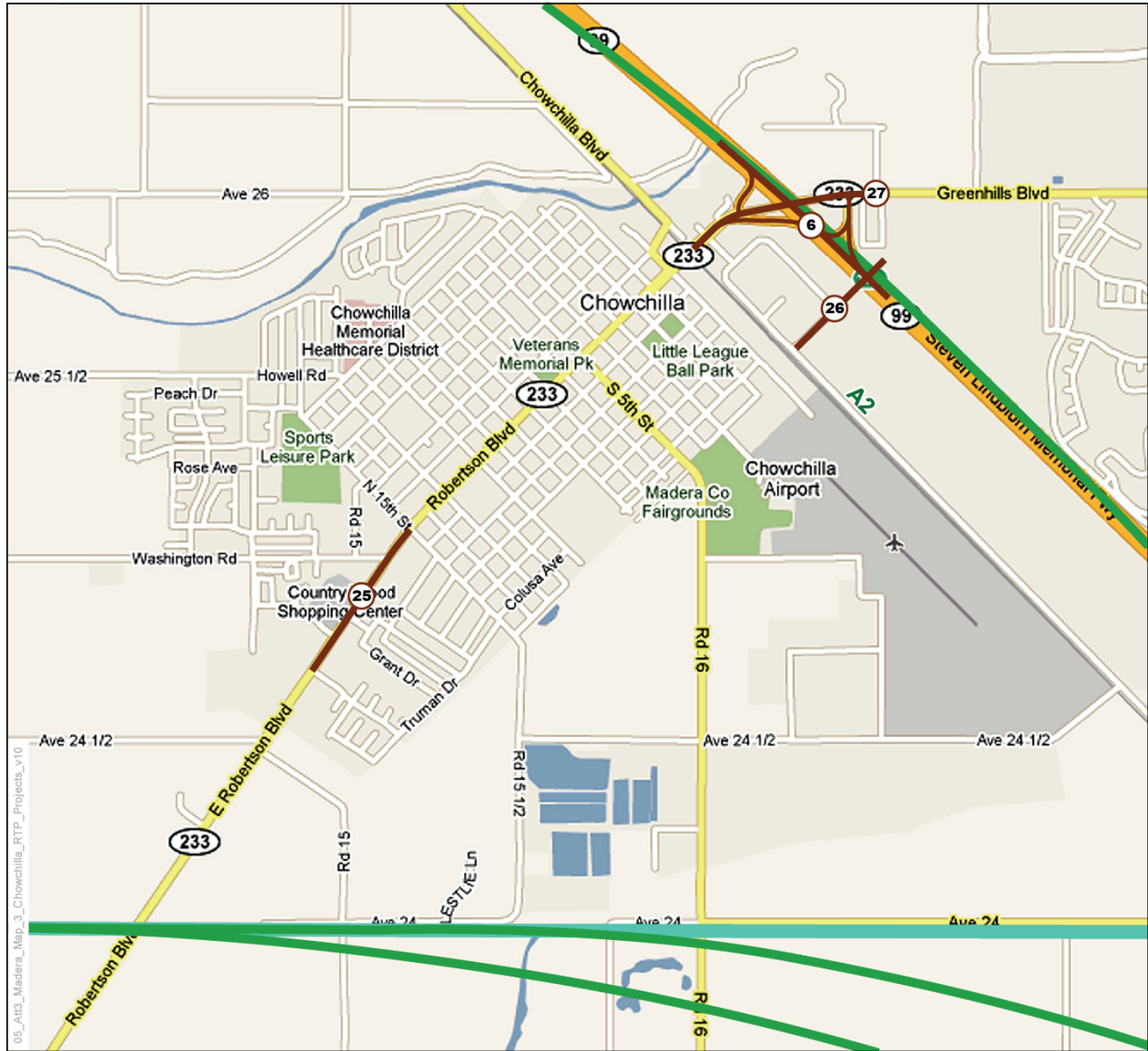
Figure 3.19B-3
 Madera County Transportation
 Projects – Madera County RTP and
 City of Madera CIP



March 28, 2012

- | | |
|--|--------------------------------------|
| | UPRR/SR 99/BSNF Hybrid Alternative |
| | UPRR/SR 99 Alternative |
| | BNSF Alternative |
| | Other HST Project Section |
| | County Boundary |
| | Regional Transportation Plan Project |
-
1. SR 99 (Ashlan Ave in Fresno County to Ave 7)
 2. SR 99 (Ave 12 Interchange)
 3. SR 99 (Ave 12 to Ellis Ave)
 4. SR 99 (Ave 7 to Ave 12)
 5. SR 99 (Ellis Ave to Ave 17)
 6. SR 99 (SR 233 Interchange)
 7. SR 99 (SR 152 Interchange)
 8. SR 99 (SR 152 to Merced County)
 9. SR 99 (SR 145 Interchange)
 13. SR 99 (SR 152 to Ave 21 1/2)
 16. SR 99 (4th St Interchange)
 28. Children's Blvd (Road 40 1/2 to Peck Blvd)
 29. Children's Blvd (SR 41 NB Ramps to Peck Blvd)
 30. Children's Blvd (SR 41 to Lanes Bridge)
 31. Ave 12 (SR 41 to N Rio Mesa Blvd)
 32. Ave 10 (Road 40 1/2 to SR 41)
 33. Lanes Bridge (at Children's Blvd)
 34. Children's Blvd (Between SR 41 Ramps)
 35. N Rio Mesa (Rio Mesa Blvd to Ave 15 at SR 41)
 36. Road 30 1/2 (Ave 12 to Ave 13)
 37. SR 41 (NB on Ramps/SR 41 at Children's Blvd)
 38. SR 41 (Madera County Ln to Ave 10)
 39. SR 41 (Ave 10 to Ave 12)
 40. SR 41 (SR 145 to Road 200)
 41. SR 41 (Road 420 to SR 49 South of Oakhurst)
 42. Ave 12 (Road 38 to SR 41)
 43. Road 29 (Olive to Ave 13)
 44. Ave 12 (SR 99 to Road 32)
 45. Road 29 (Ave 12 to Ave 13)

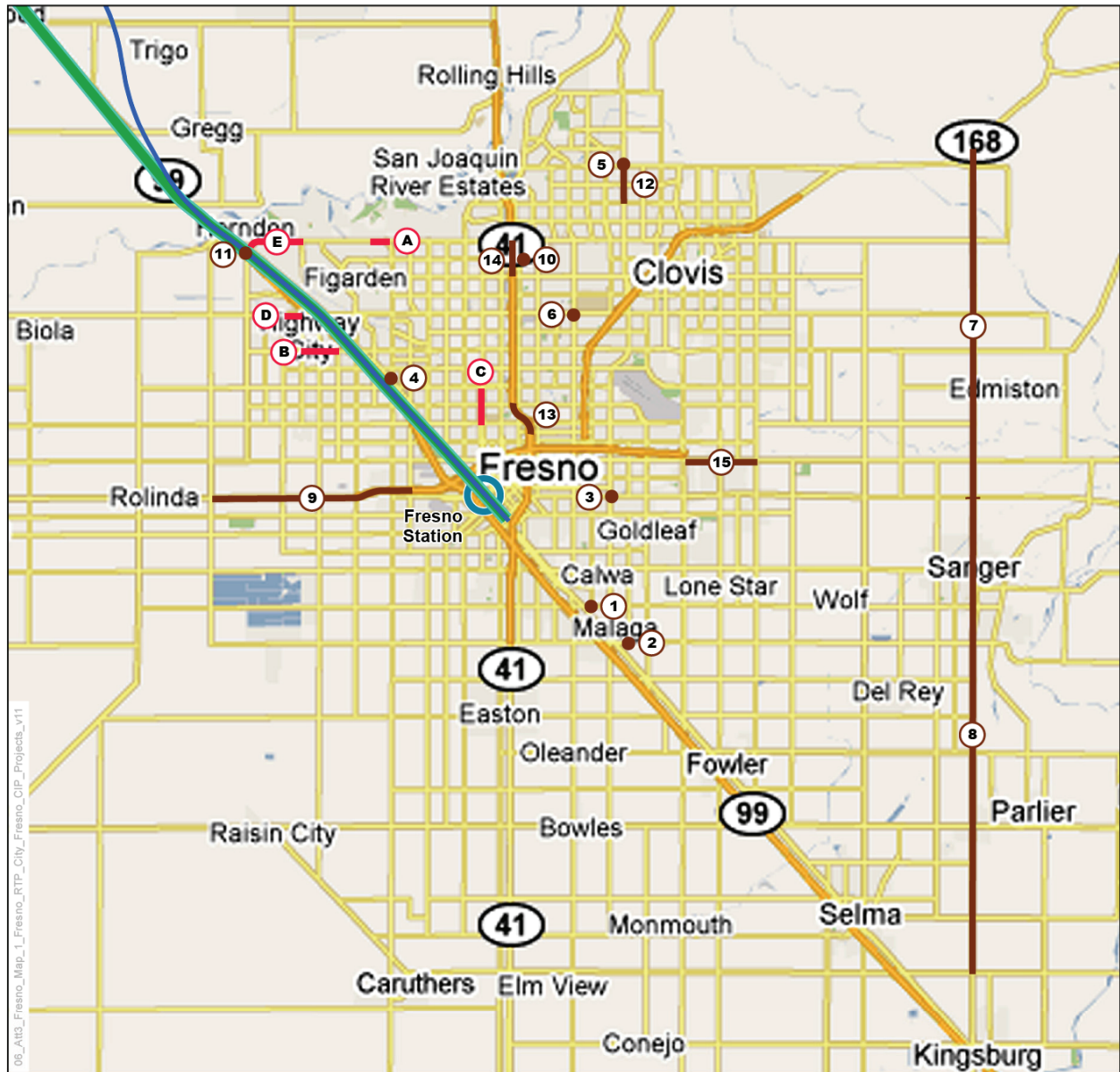
Figure 3.19B-4
 Madera County Transportation Projects – Madera County RTP



March 23, 2012

- UPRR/SR 99/BNSF Hybrid Alternative
- UPRR/SR 99 Alternative
- 6 Regional Transportation Plan Project
- 6.** SR 99 (SR 233 Interchange)
- 25.** Robertson Blvd (15th St to Palm Pkwy)
- 26.** Fig Tree (SR 99 Overcrossing to Chowchilla Blvd)
- 27.** Ave 26 (SR 99 to Coronado)

Figure 3.19B-5
 Madera County Transportation
 Projects – Chowchilla RTP



March 23, 2012

- | | | |
|--|---|--|
| <ul style="list-style-type: none"> UPRR/SR 99/BNSF Hybrid Alternative UPRR/SR 99 Alternative BNSF Alternative Potential Station Regional Transportation Plan Project CIP Project | <ul style="list-style-type: none"> 1. North and Maple 2. Willow and Central 3. Chestnut and Kings Canyon 4. Marks and Weber I/C 5. Willow and Shepherd 6. Cedar and Shaw 7. Academy (SR 180 to SR 168) 8. Academy (Mountainview to SR 180) 9. SR 180 (Brawley to Marks, East of West Ave) 10. Fresno and Sierra 11. Herndon (SR 99 to Weber and Golden State) 12. Willow (Nees to Shepherd) 13. SR 41 (McKinley and Shields Onramps) 14. SR 41 (Bullard to Herndon) 15. SR 180 (Clovis to Temperance) | <ul style="list-style-type: none"> A. Herndon Ave (Valentine to Marks) B. Ashlan Ave (Cornelia to Blythe) C. Fruit Ave (Clinton to Dakota) D. Shaw (Polk to SR 99) E. Herndon Ave (Golden State to Polk) |
|--|---|--|

Figure 3.19B-6
 Fresno Transportation Projects –
 Fiscally Constrained Fresno FTIP
 Projects Programmed through 2010

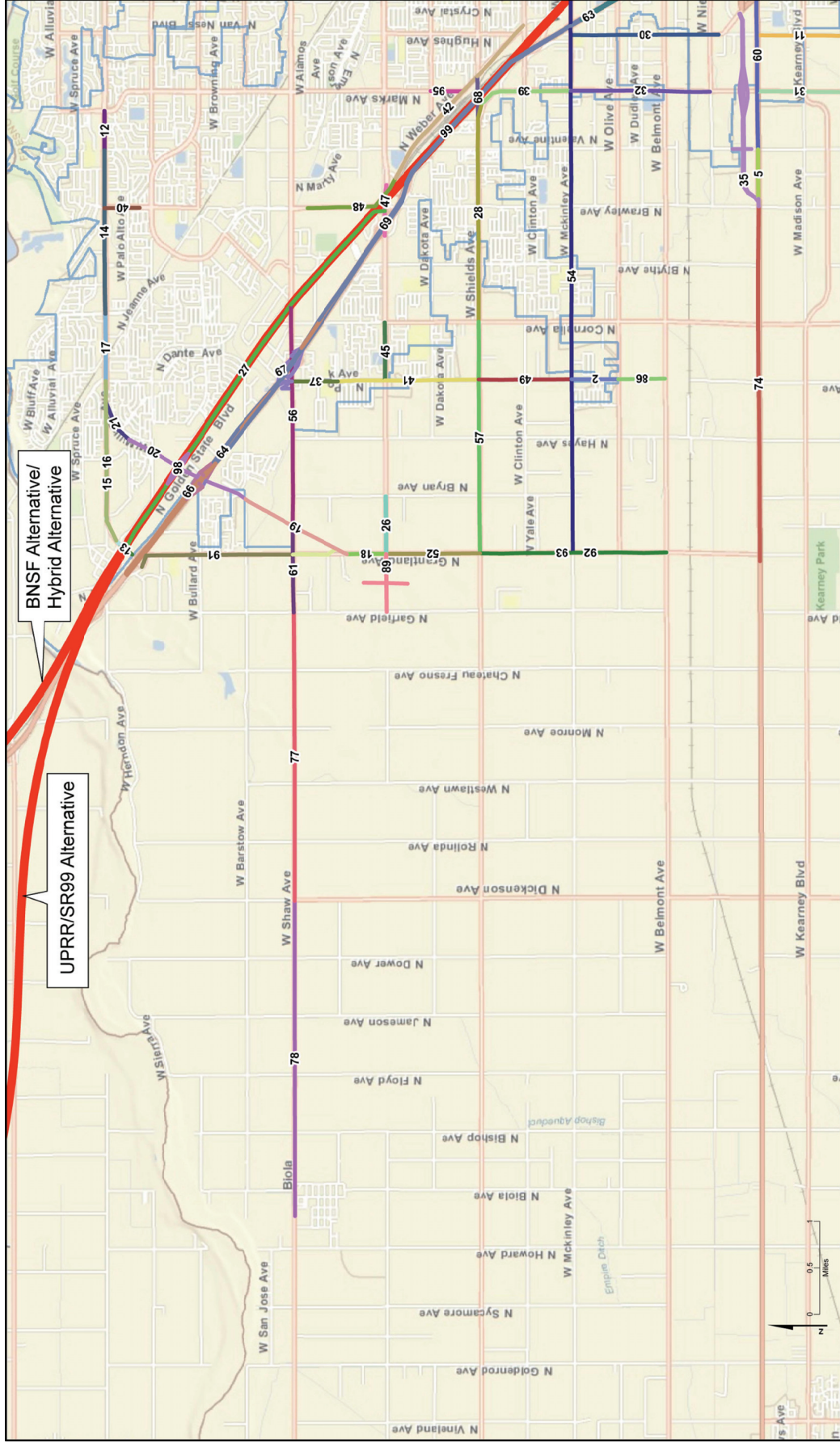


Figure 3.19B-7
 Fresno Transportation Projects – Fresno RTP Urban Area

Note: Due to the number of projects listed on this figure, please see Table 3.19B-8, where the first column indicates the project number shown on this map.

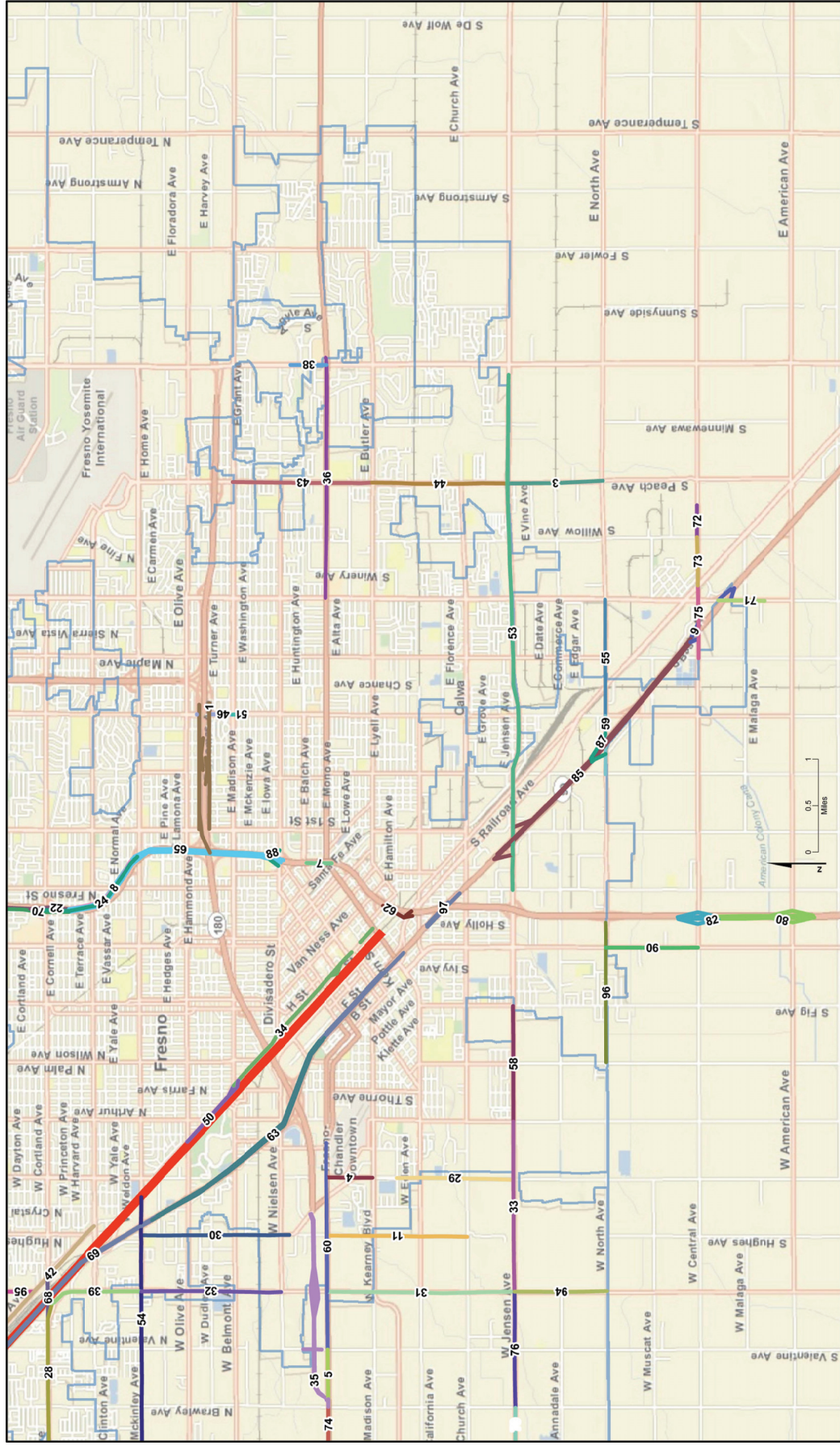


Figure 3.19B-8
 Fresno Transportation Projects – Fresno RTP County Area

Note: Due to the number of projects listed on this figure, please see Table 3.19B-8, where the first column indicates the project number shown on this map.