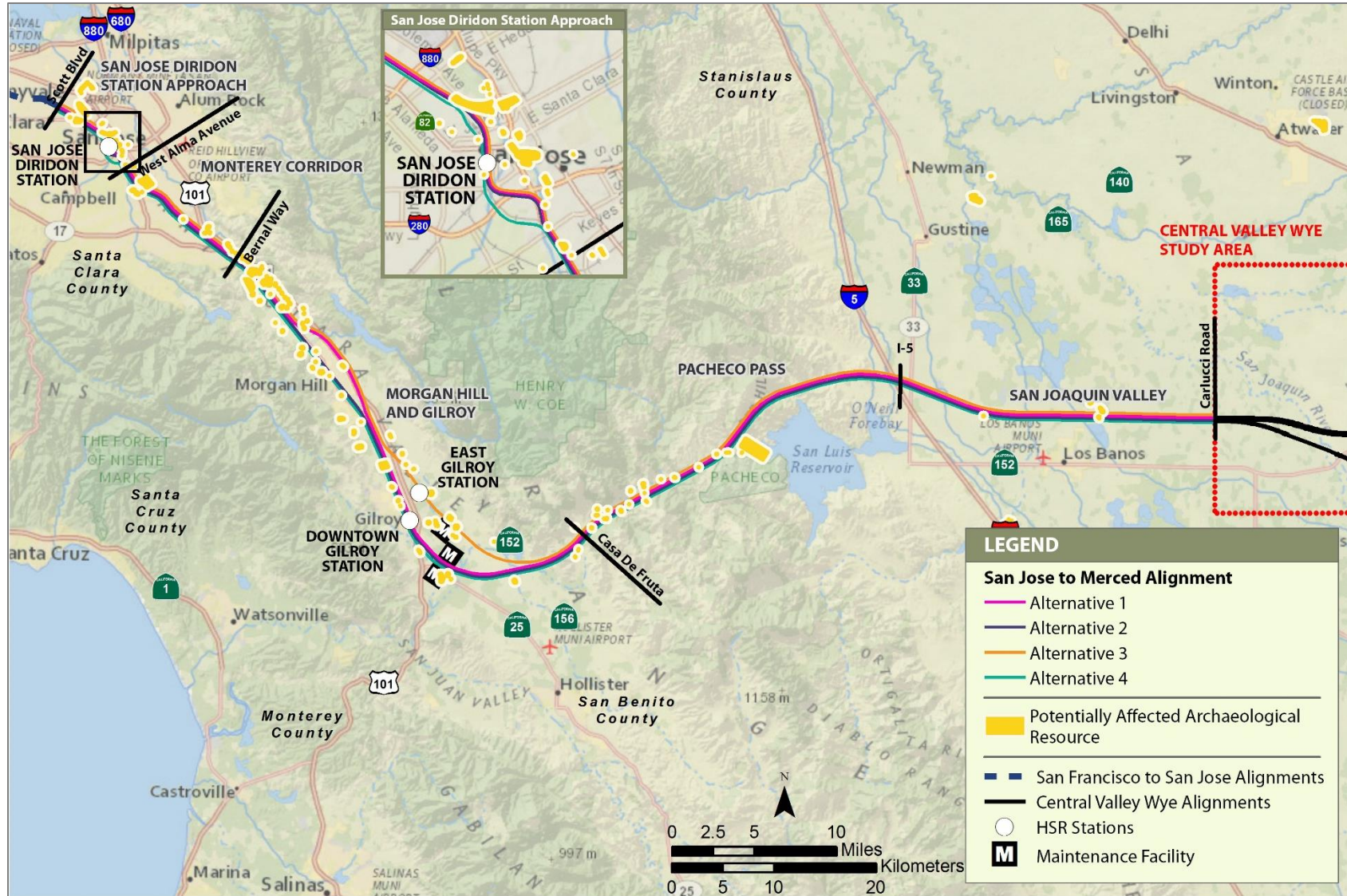


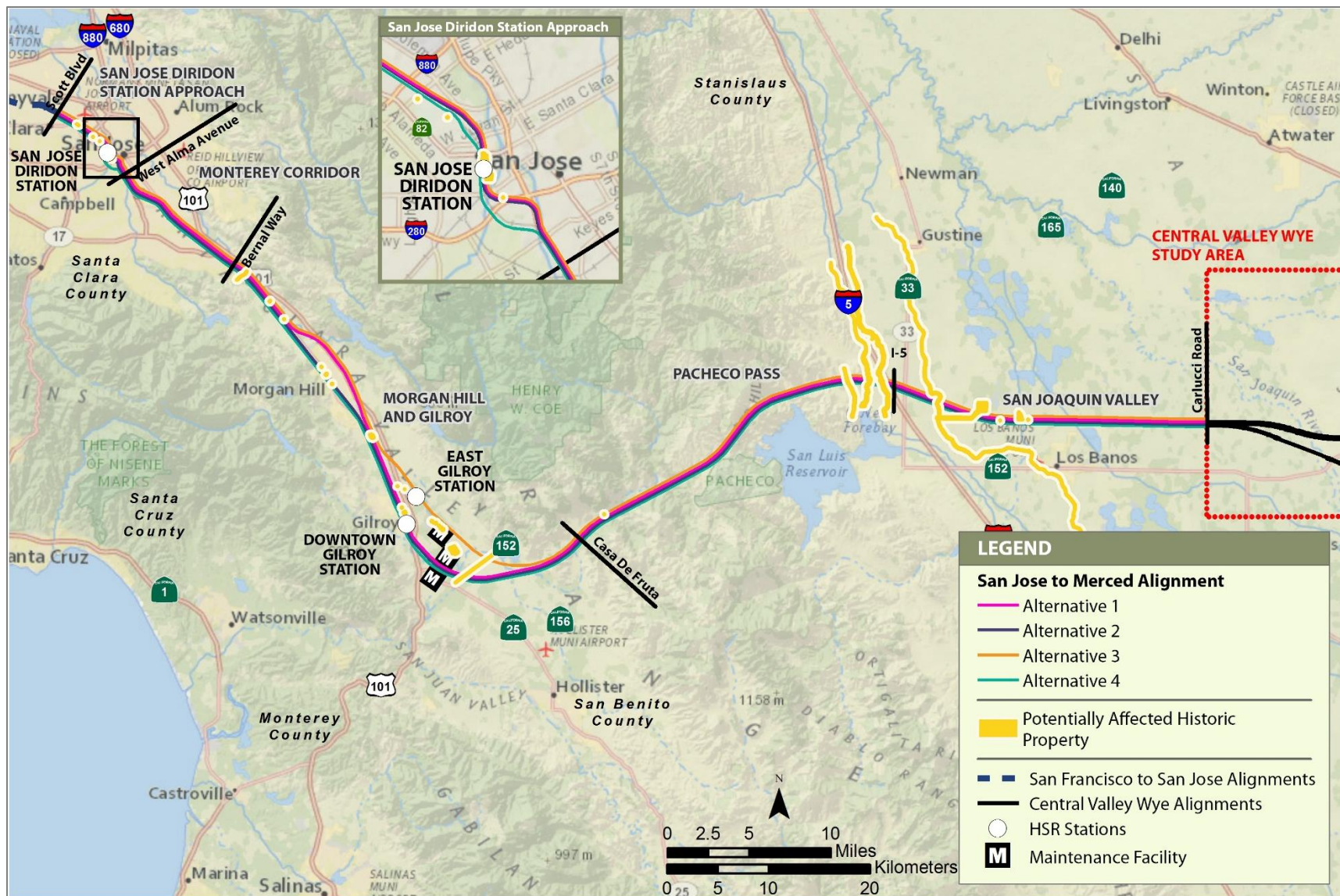
APPENDIX 3.17-C: ARCHAEOLOGICAL AND BUILT RESOURCES

Appendix 3.17-C includes a map set containing overview maps for potentially affected archaeological resources and potentially affected historic built resources locations, as well as individual historic built resource maps that show project alternative alignments, project footprint boundaries, and potentially affected historic property boundaries. The built resource maps include the identification numbers assigned to individual resources located in the APE. A description of the project scope and evaluation of impacts at each resource are included in Chapter 3.17-C, *Cultural Resources*, and are organized by these resource identification number. Individual archaeological site maps are not included, because the location of such resources is protected from public disclosure under state and federal law.



APRIL 2019

Figure 1 Overview of Potentially Affected Archaeological Resources



APRIL 2019

Figure 2 Overview of Potentially Affected Historic Built Resources

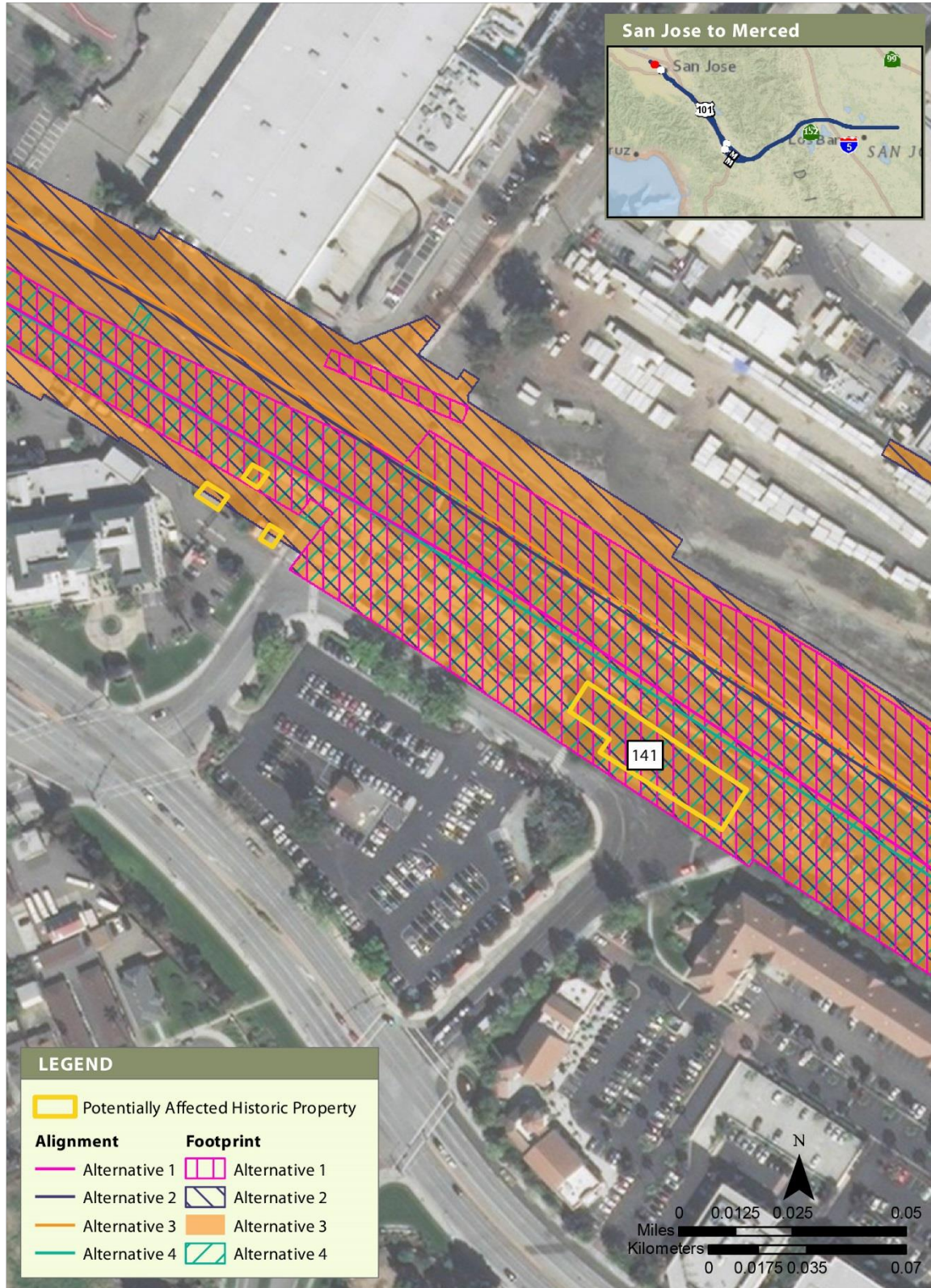


Figure 3 Built Resource Site 106



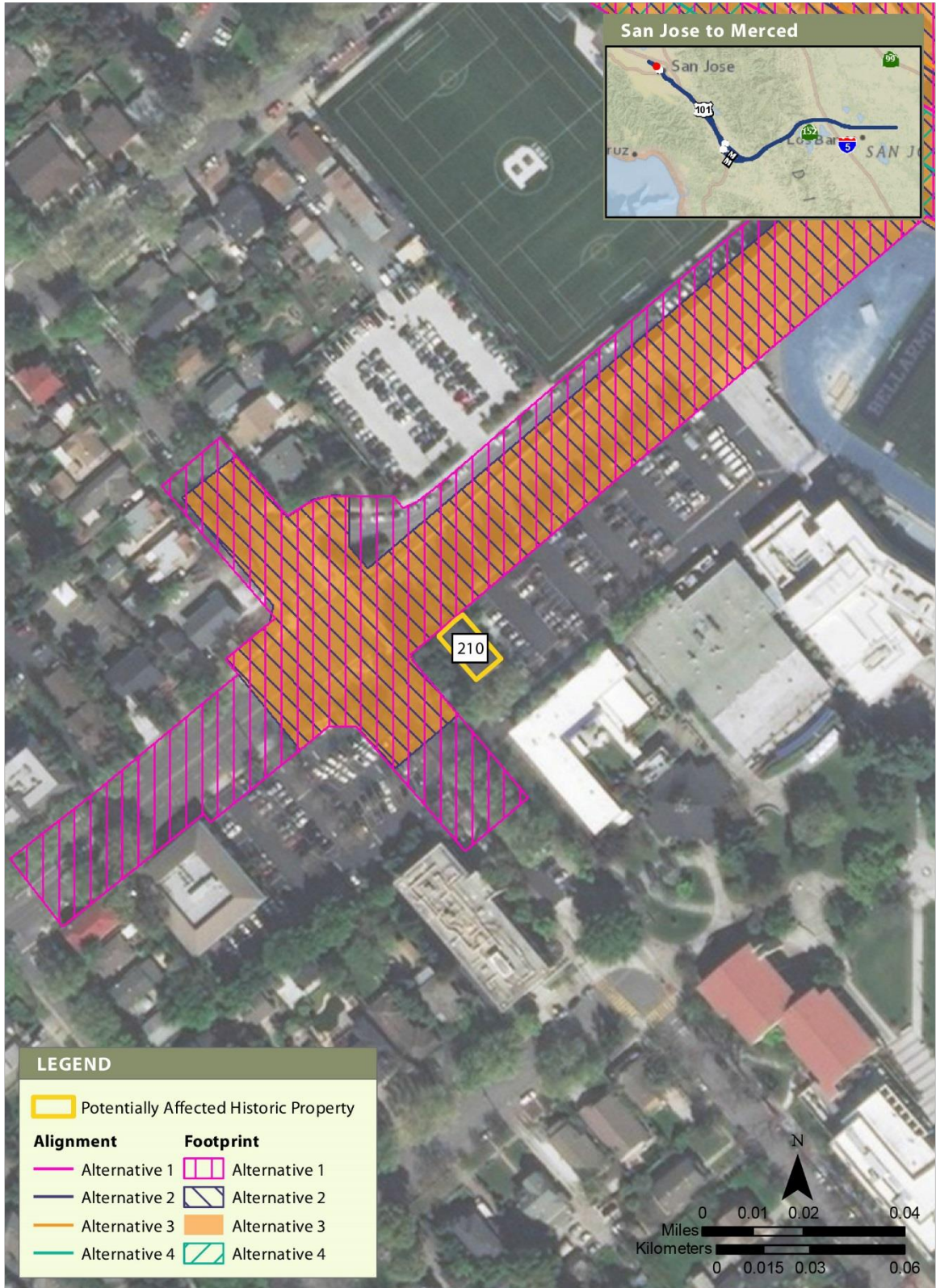
APRIL 2019

Figure 4 Built Resource Site 111



APRIL 2019

Figure 5 Built Resource Site 141



APRIL 2019

Figure 6 Built Resource Site 210



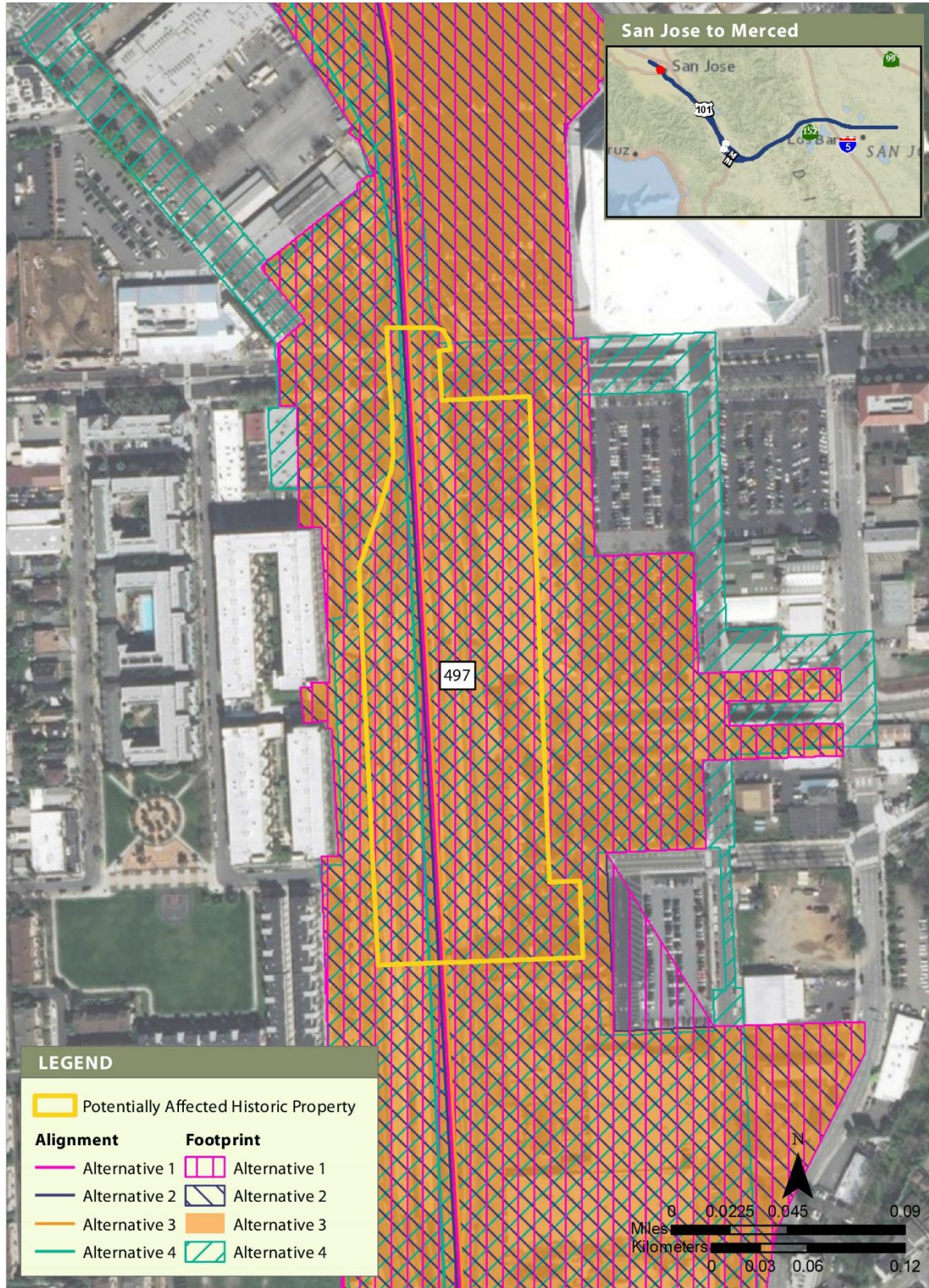
APRIL 2019

Figure 7 Built Resource Site 304



APRIL 2019

Figure 8 Built Resource Site 495



APRIL 2019

Figure 9 Built Resource Site 497



APRIL 2019

Figure 10 Built Resource Site 522



APRIL 2019

Figure 11 Built Resource Site 566

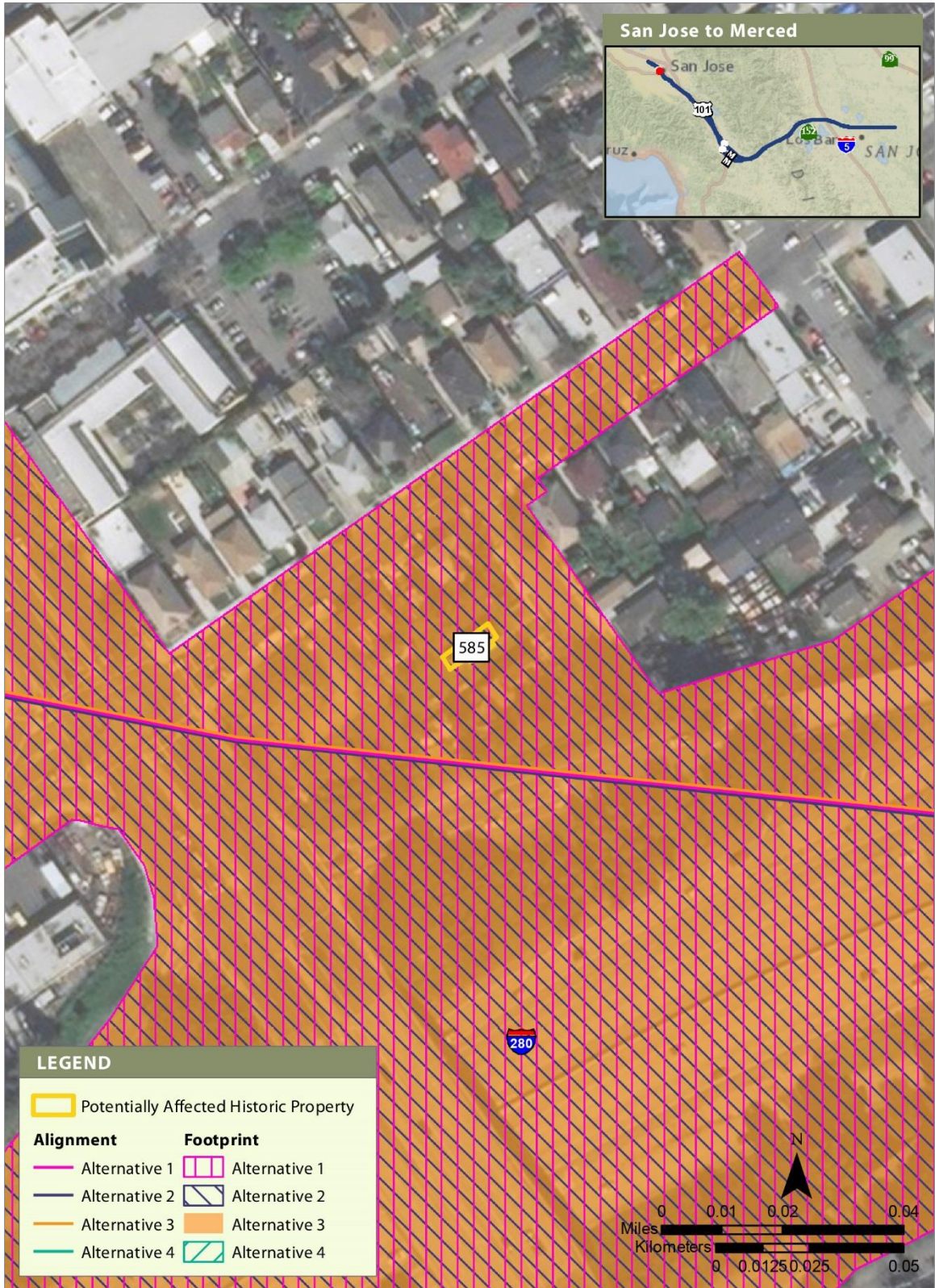
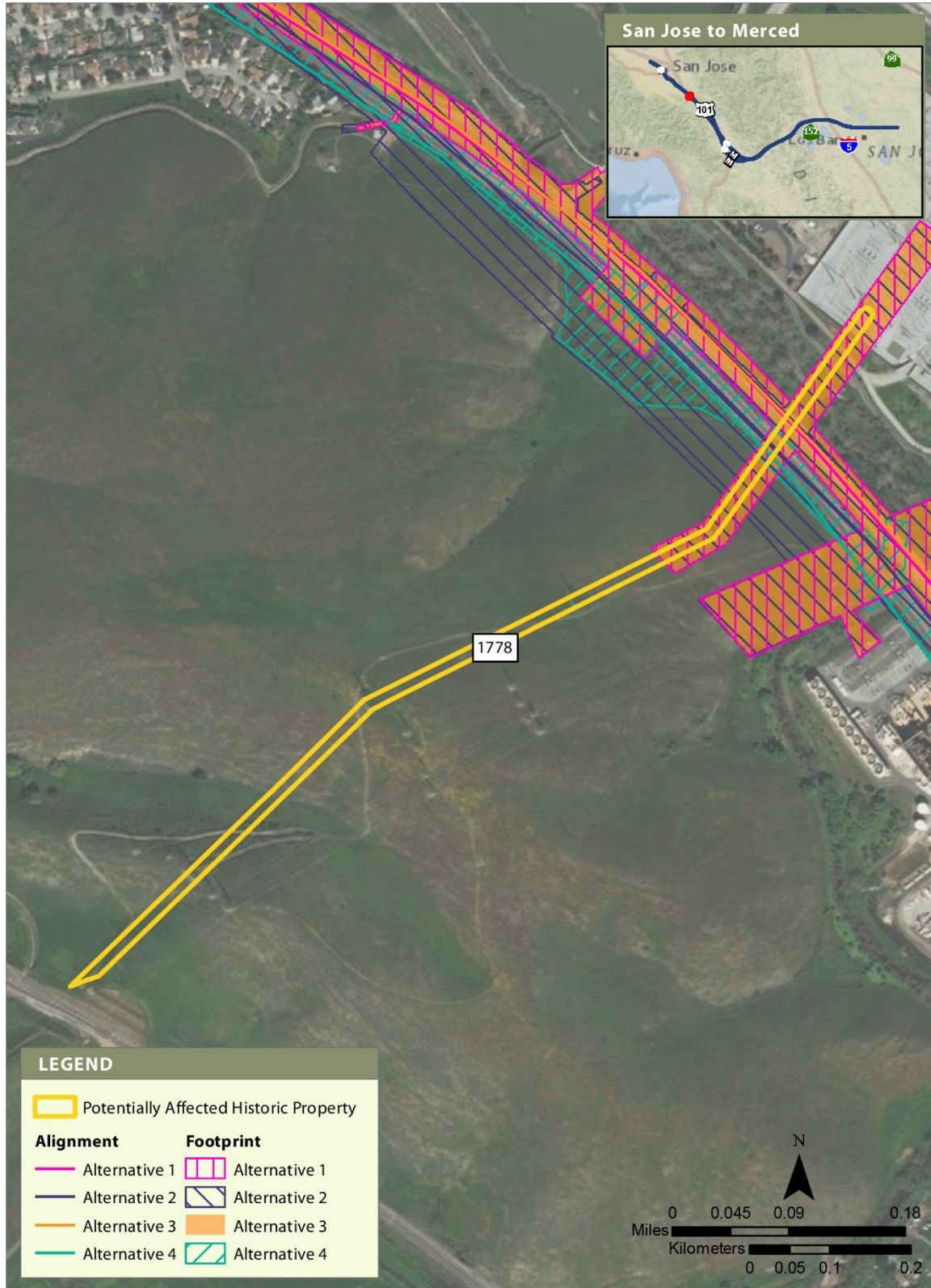
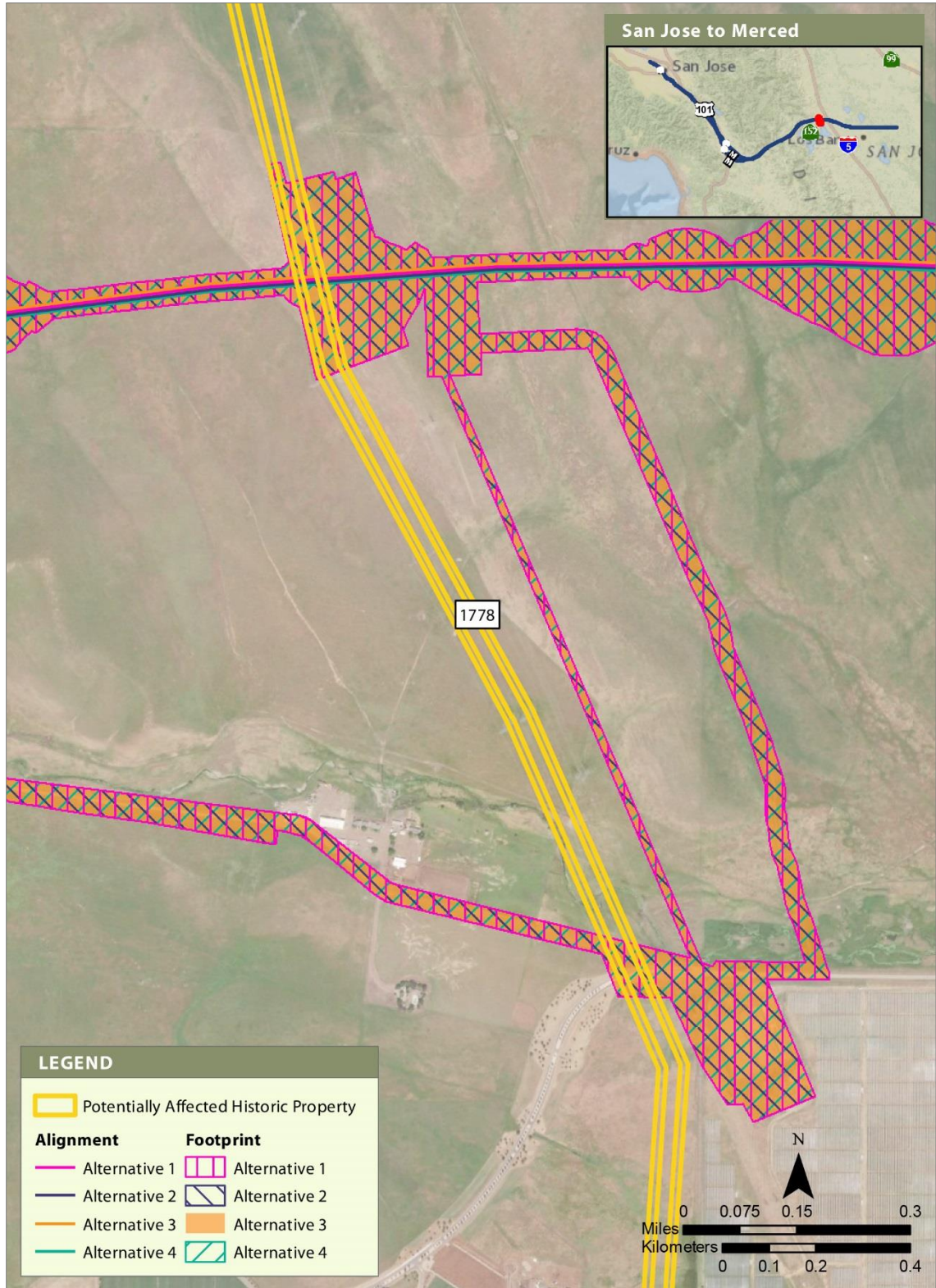


Figure 12 Built Resource Site 585



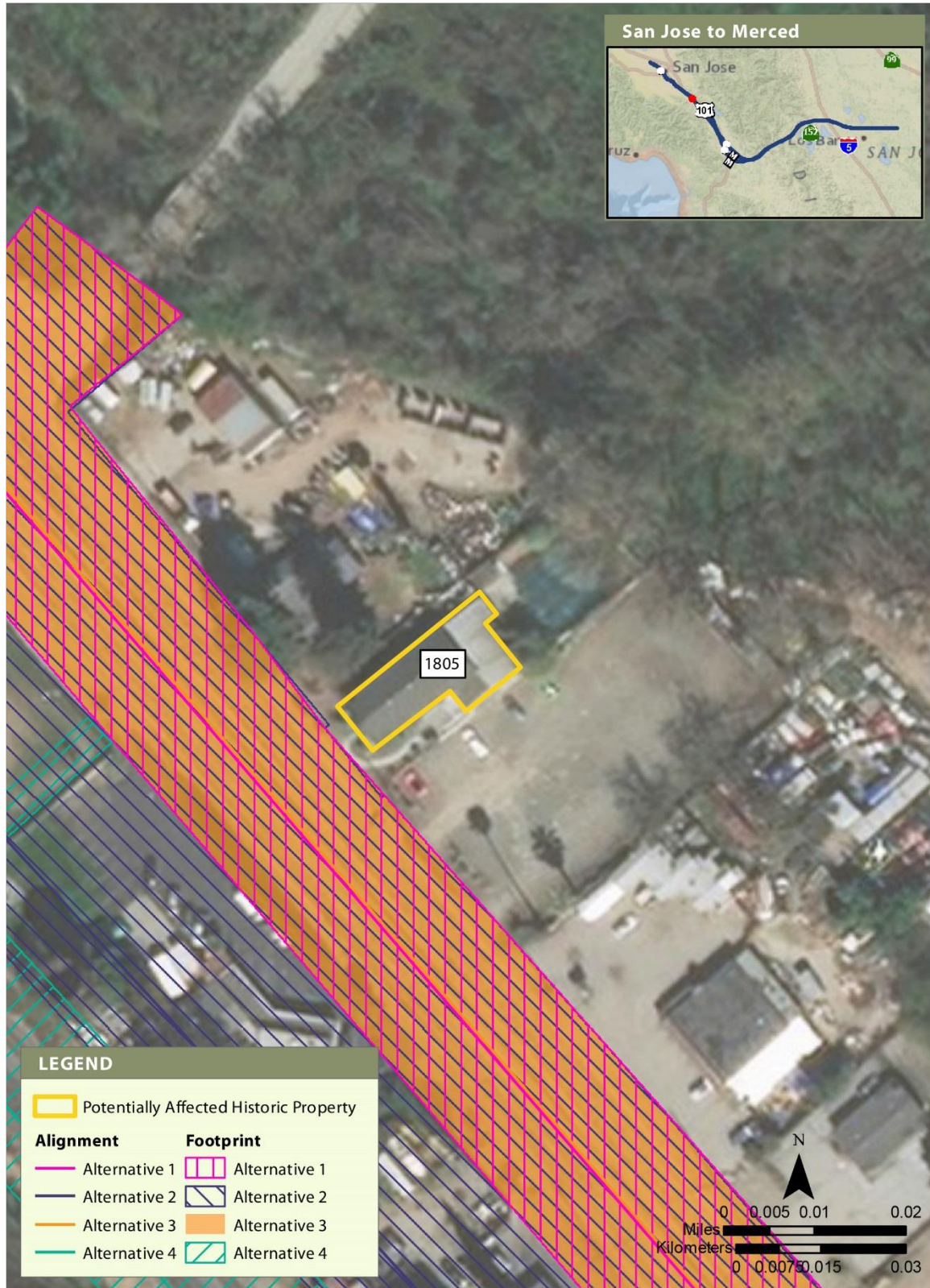
APRIL 2019

Figure 13 Built Resource Site 1778 (500-kV Moss Landing-Metcalf Transmission Line)



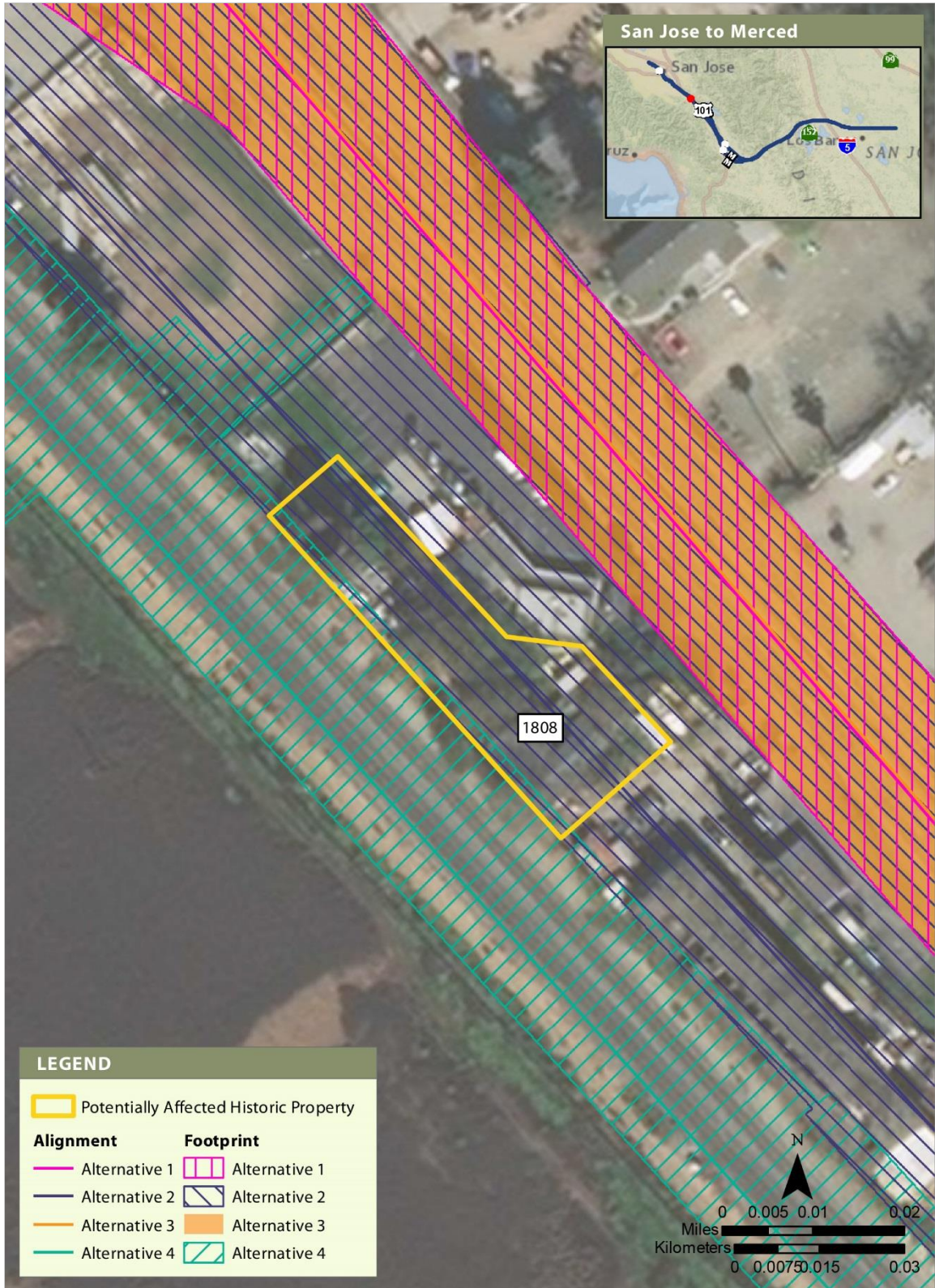
APRIL 2019

Figure 14 Built Resource Site 1778 (500-kV Tesla-Los Banos No. 1 and 500-kV Tracy-Los Banos Transmission Lines)



APRIL 2019

Figure 15 Built Resource Site 1805



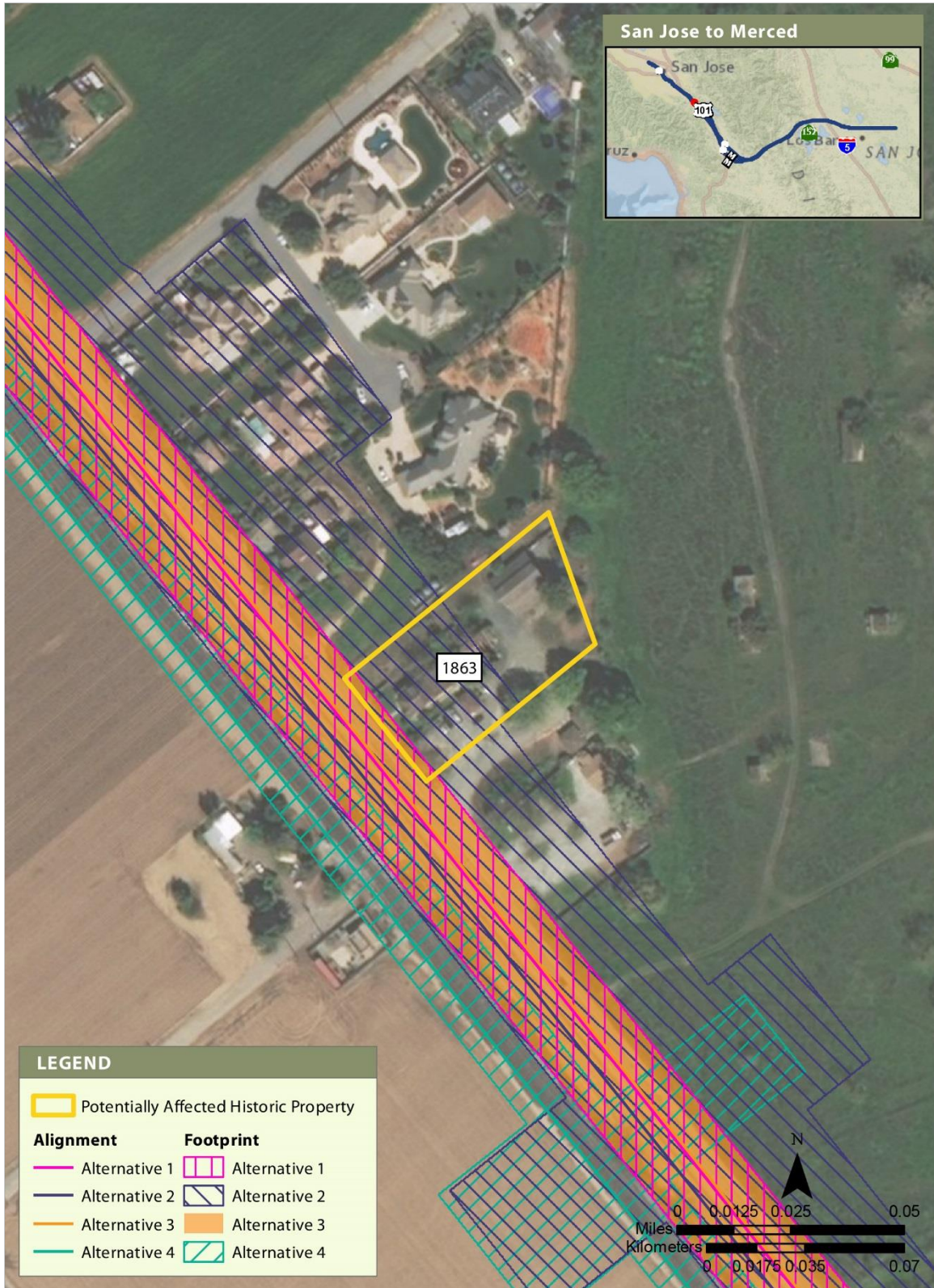
APRIL 2019

Figure 16 Built Resource Site 1808



APRIL 2019

Figure 17 Built Resource Site 1837



APRIL 2019

Figure 18 Built Resource Site 1863

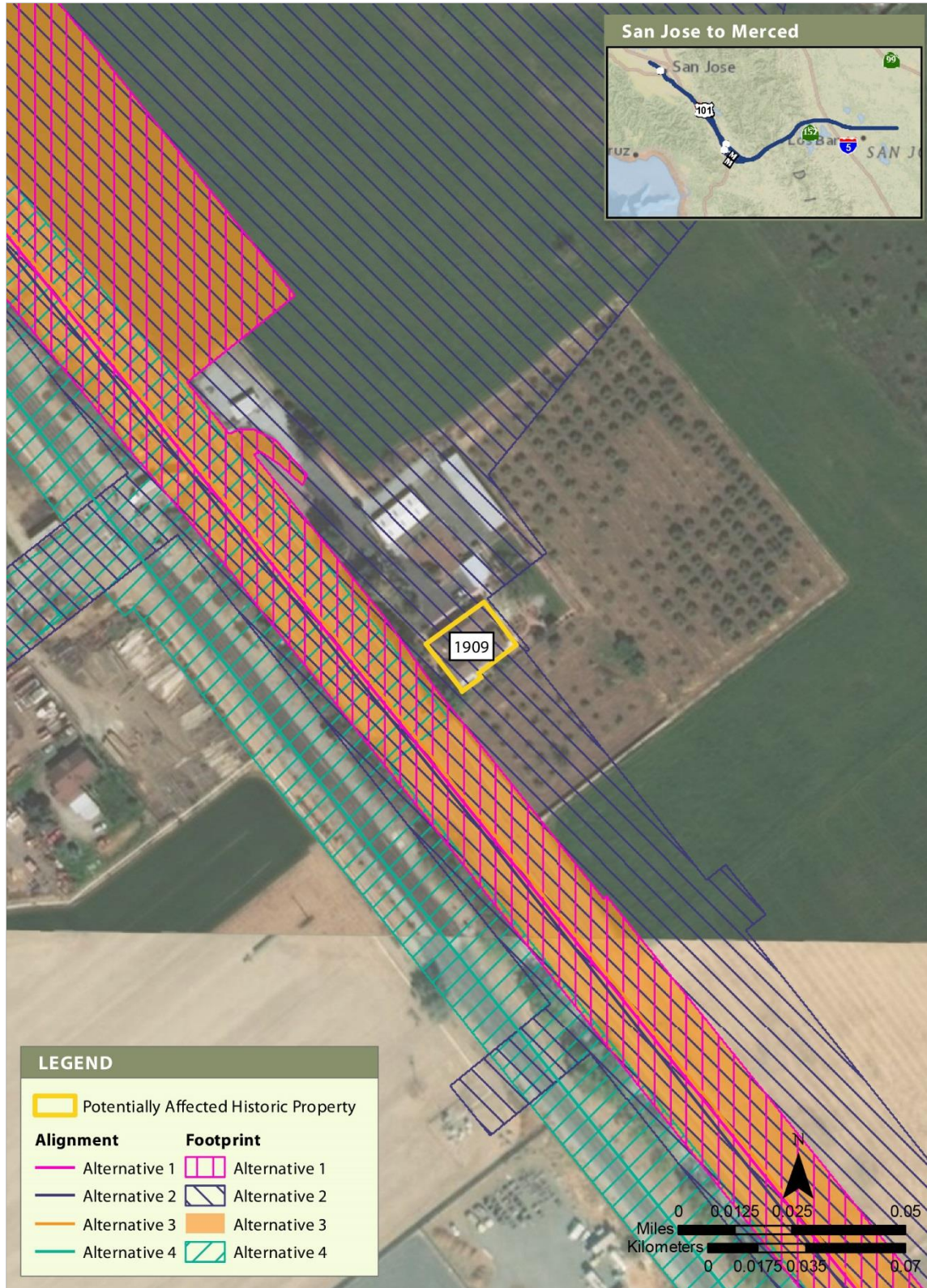


Figure 19 Built Resource Site 1909



APRIL 2019

Figure 20 Built Resource Site 2044



APRIL 2019

Figure 21 Built Resource Site 2127



APRIL 2019

Figure 22 Built Resource Site 2194

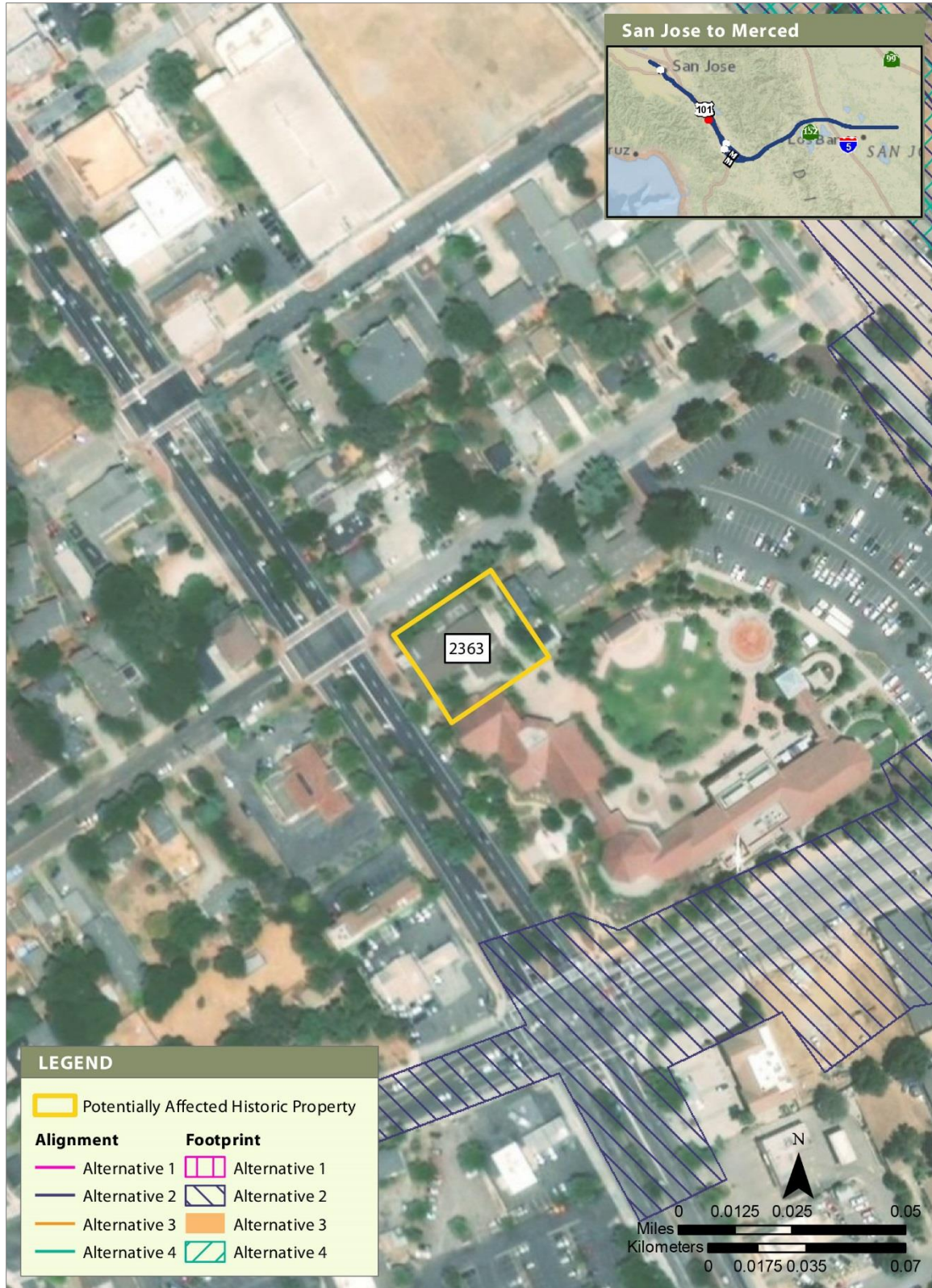
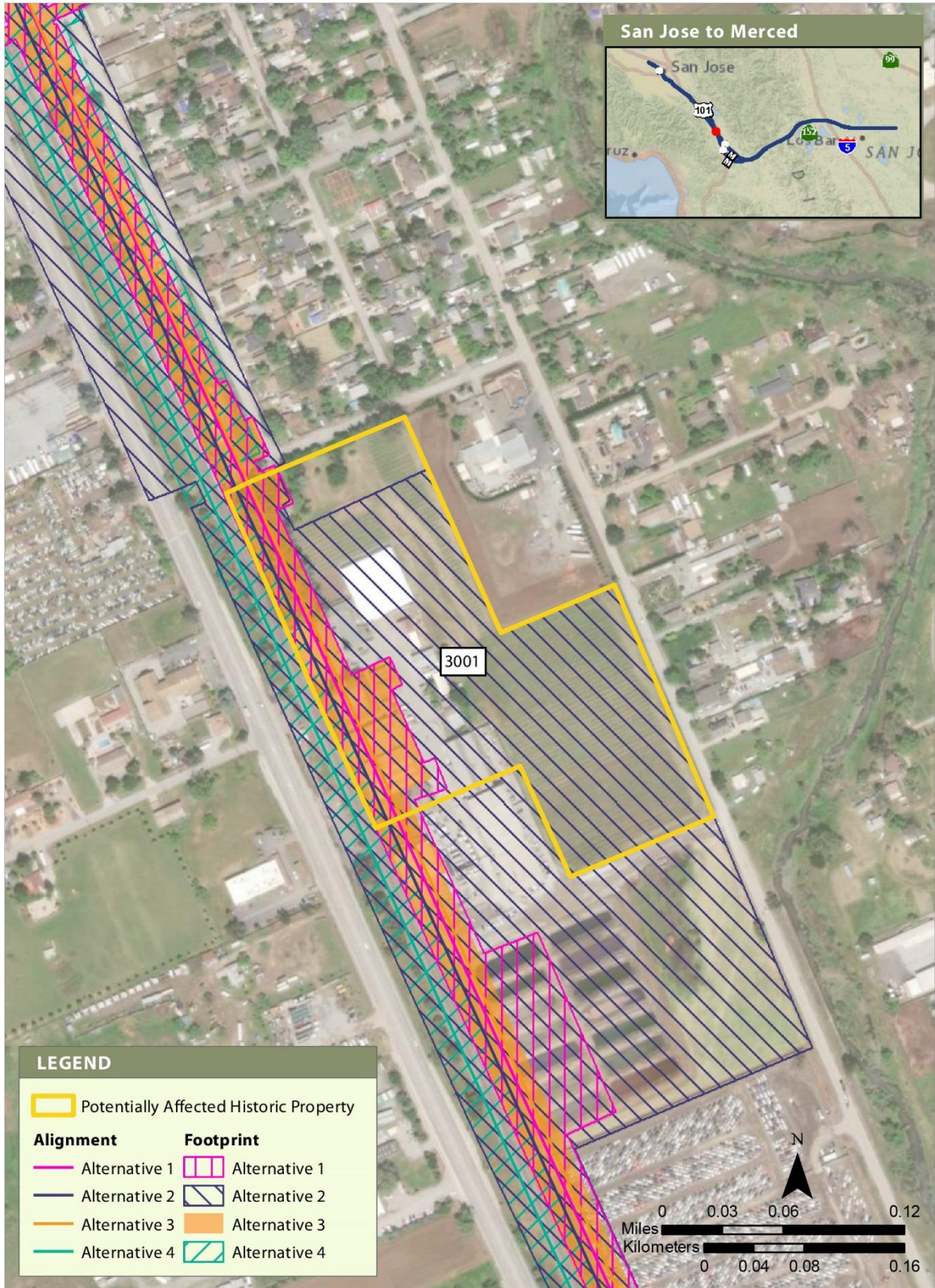
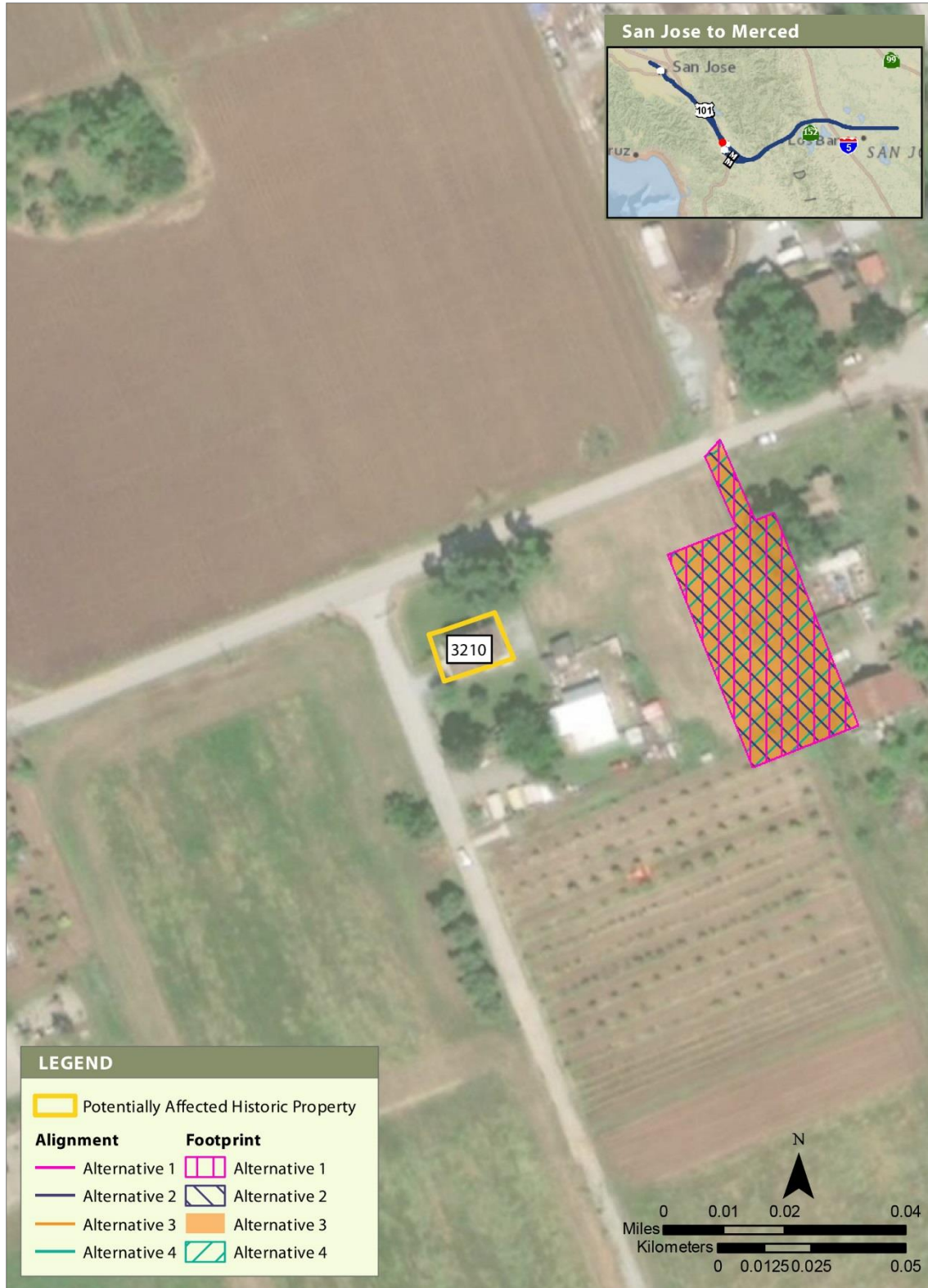


Figure 23 Built Resource Site 2363



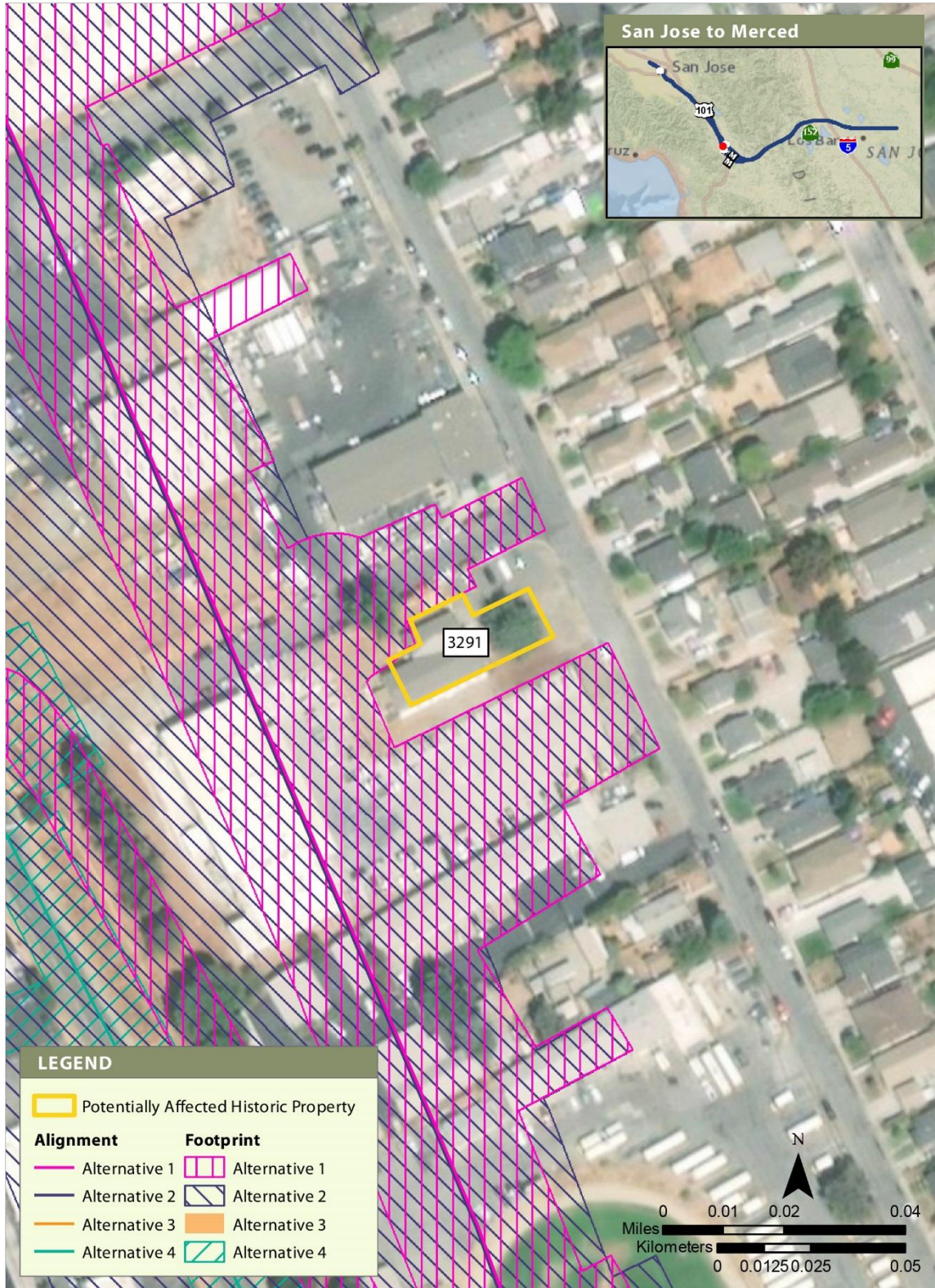
APRIL 2019

Figure 24 Built Resource Site 3001



APRIL 2019

Figure 25 Built Resource Site 3210



APRIL 2019

Figure 26 Built Resource Site 3291

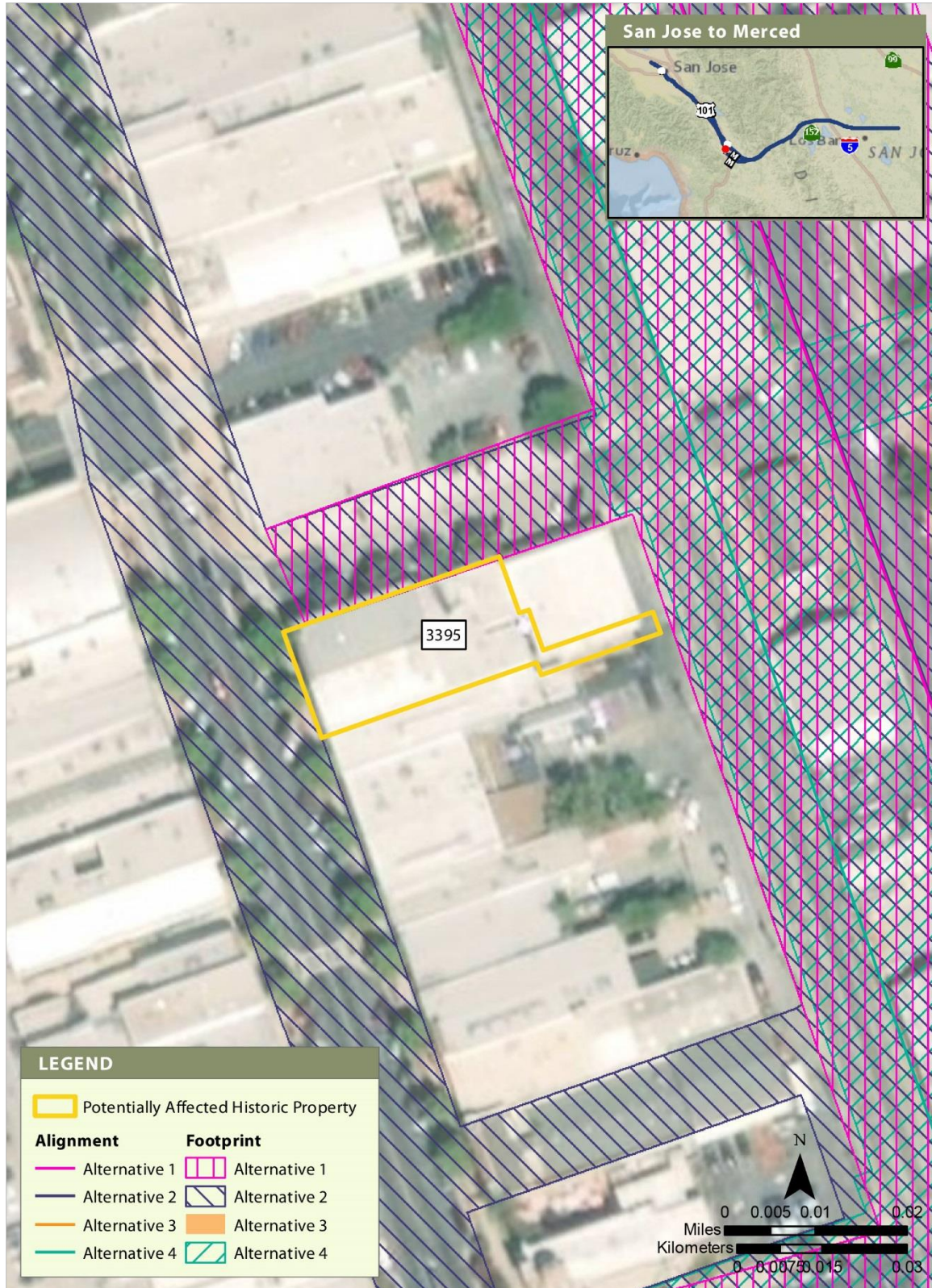


Figure 27 Built Resource Site 3395

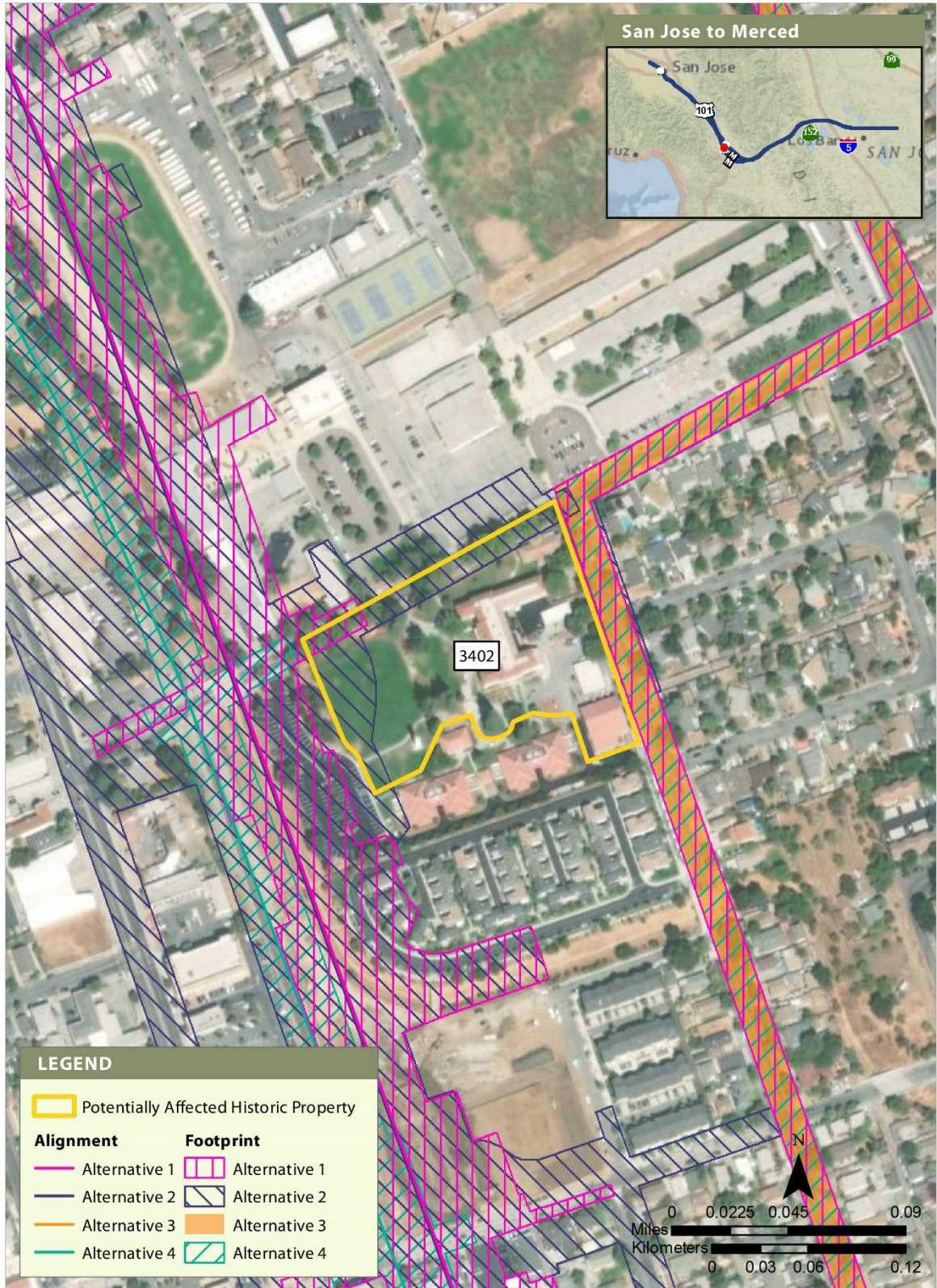
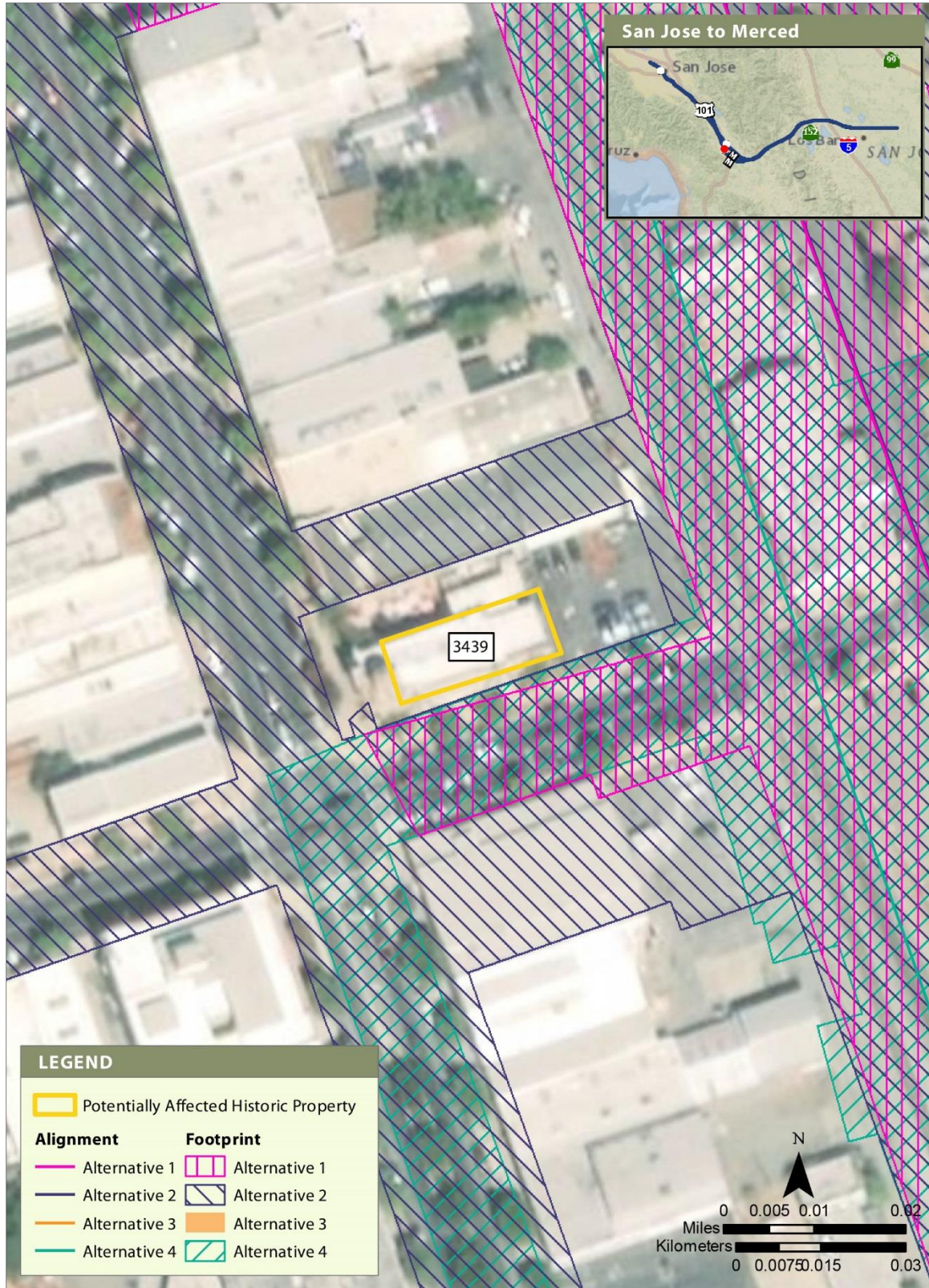


Figure 28 Built Resource Site 3402



APRIL 2019

Figure 29 Built Resource Site 3439

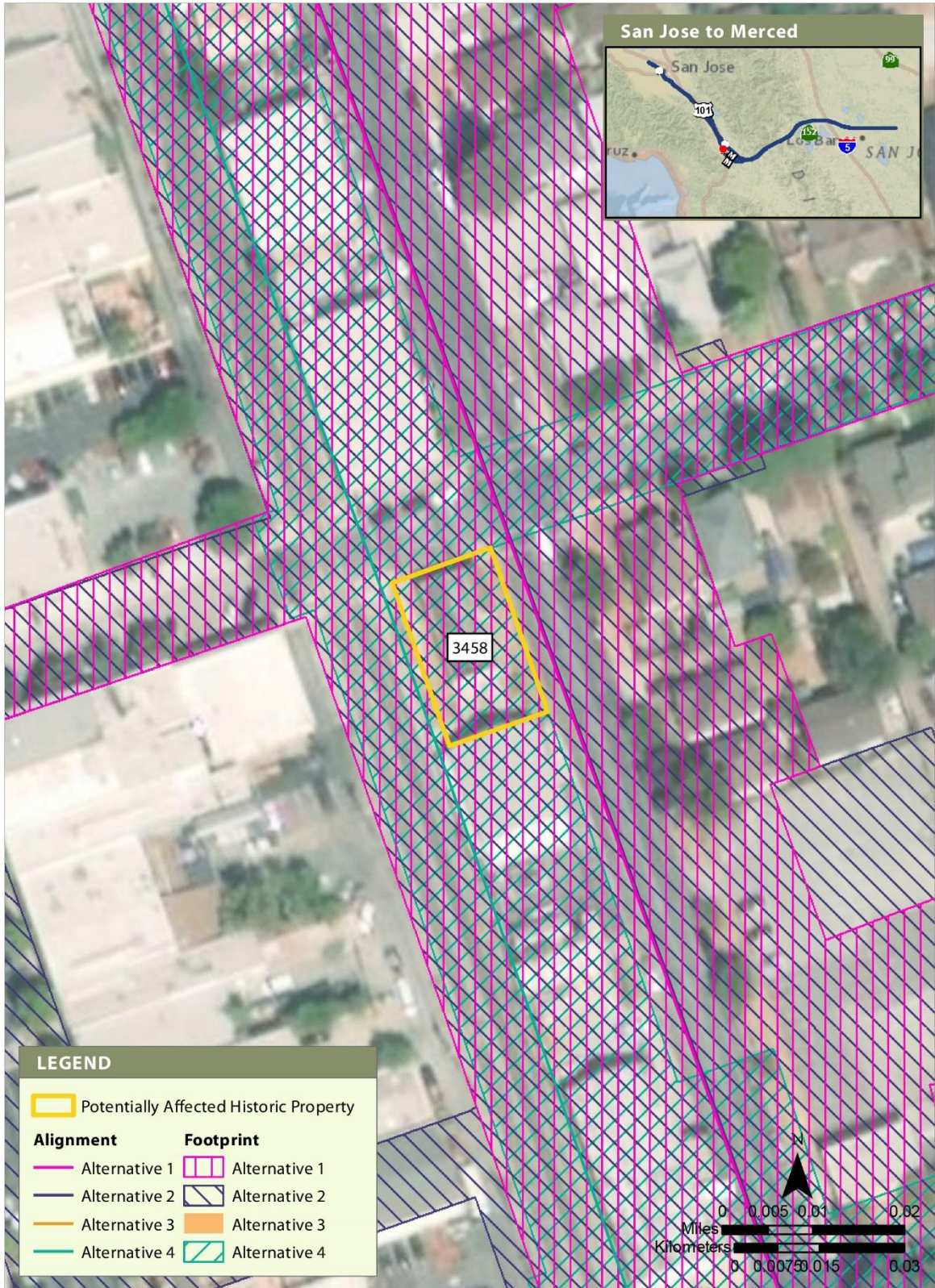
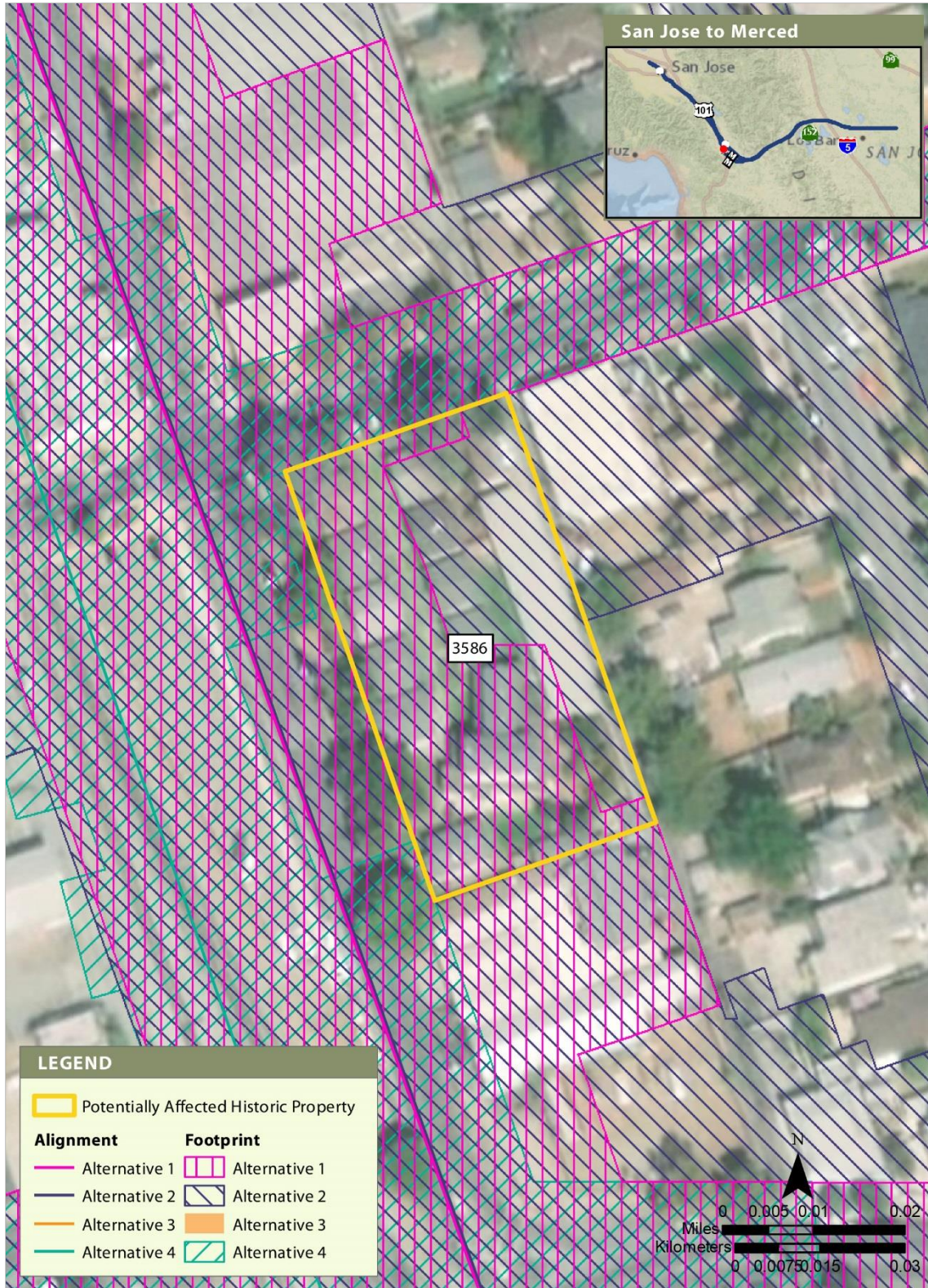


Figure 30 Built Resource Site 3458



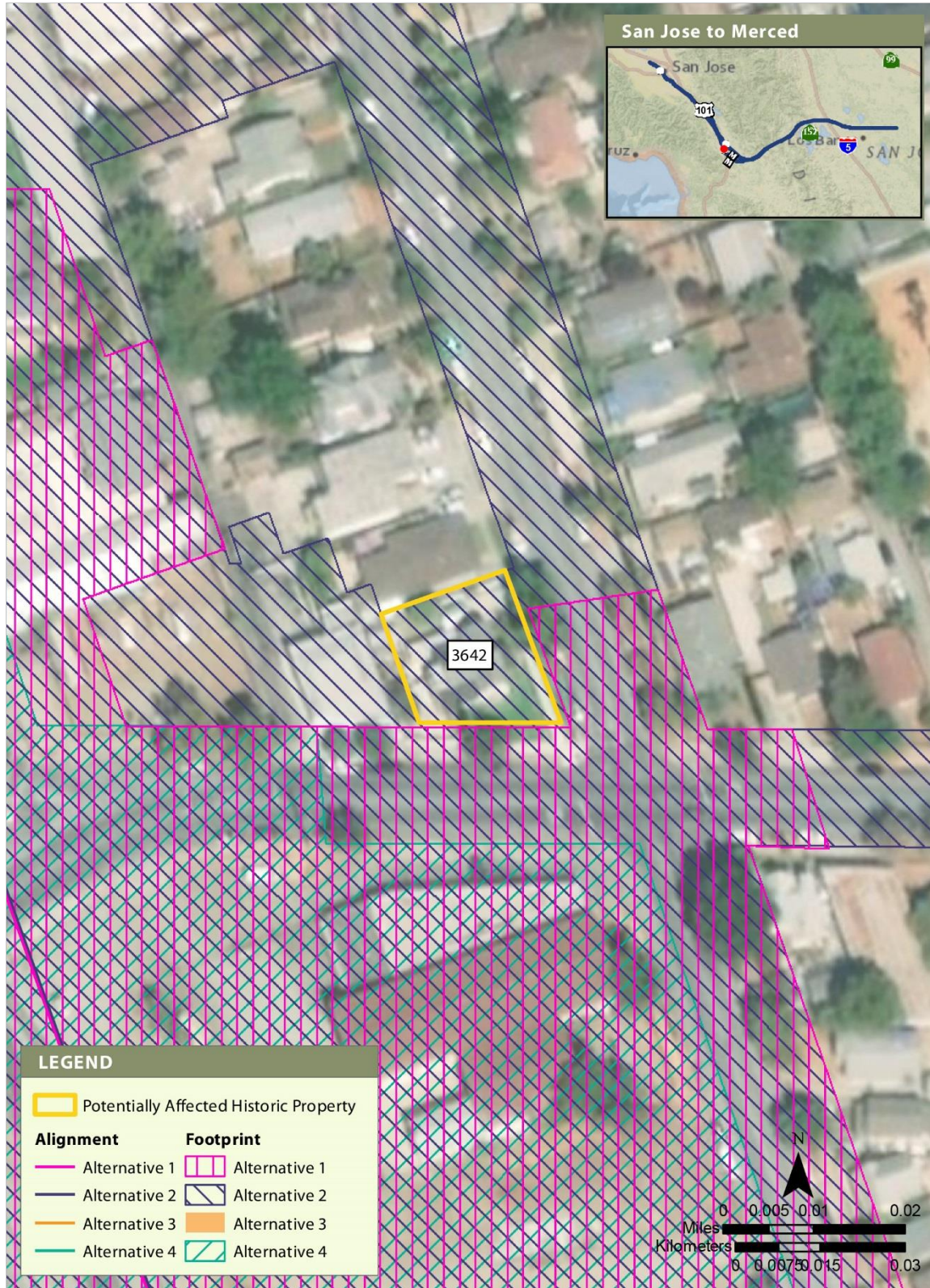
APRIL 2019

Figure 31 Built Resource Site 3586



APRIL 2019

Figure 32 Built Resource Site 3610



APRIL 2019

Figure 33 Built Resource Site 3642



Figure 34 Built Resource Site 3855



APRIL 2019

Figure 35 Built Resource Site 3871



APRIL 2019

Figure 36 Built Resource Site 3882

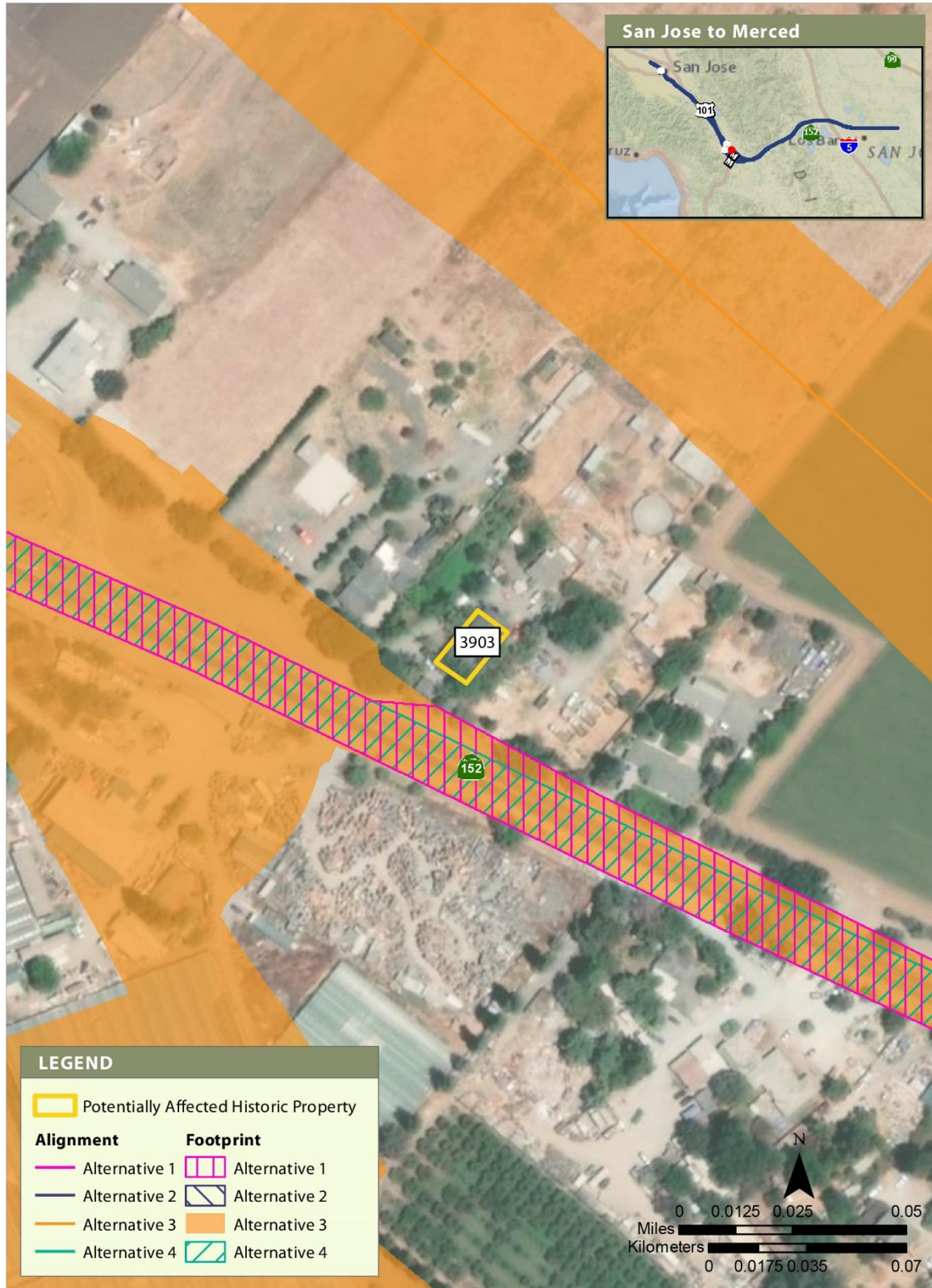
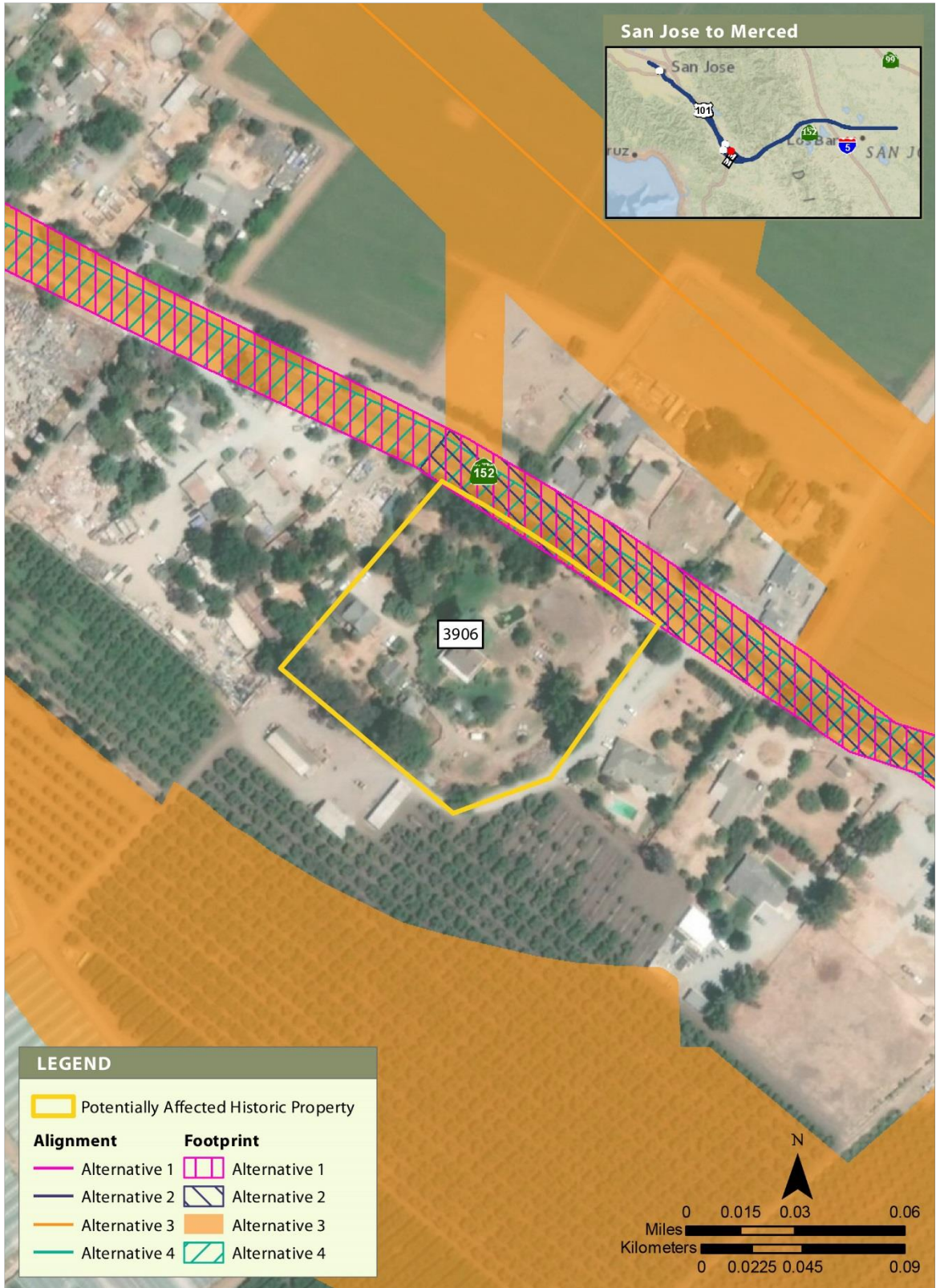
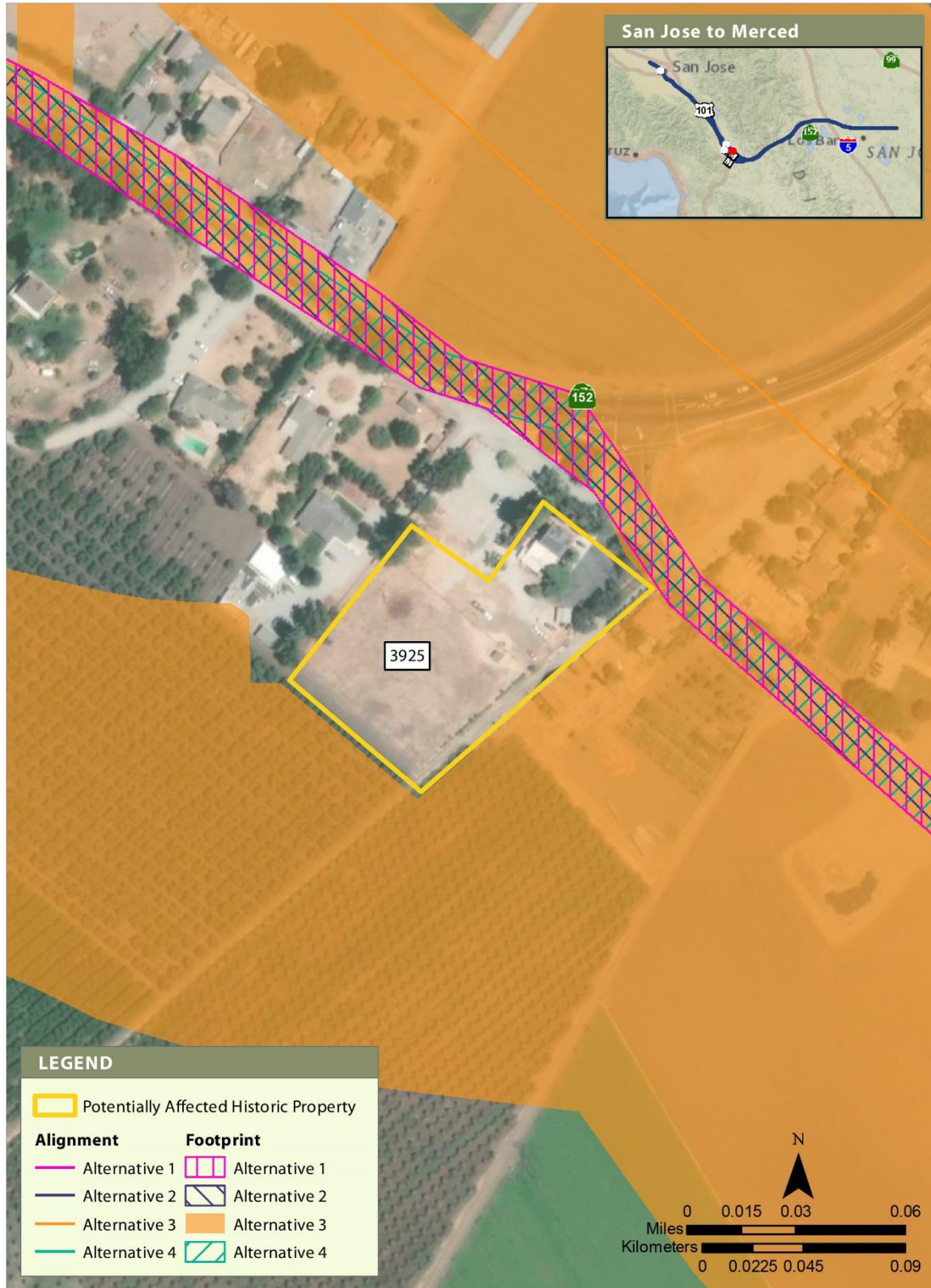


Figure 37 Built Resource Site 3903



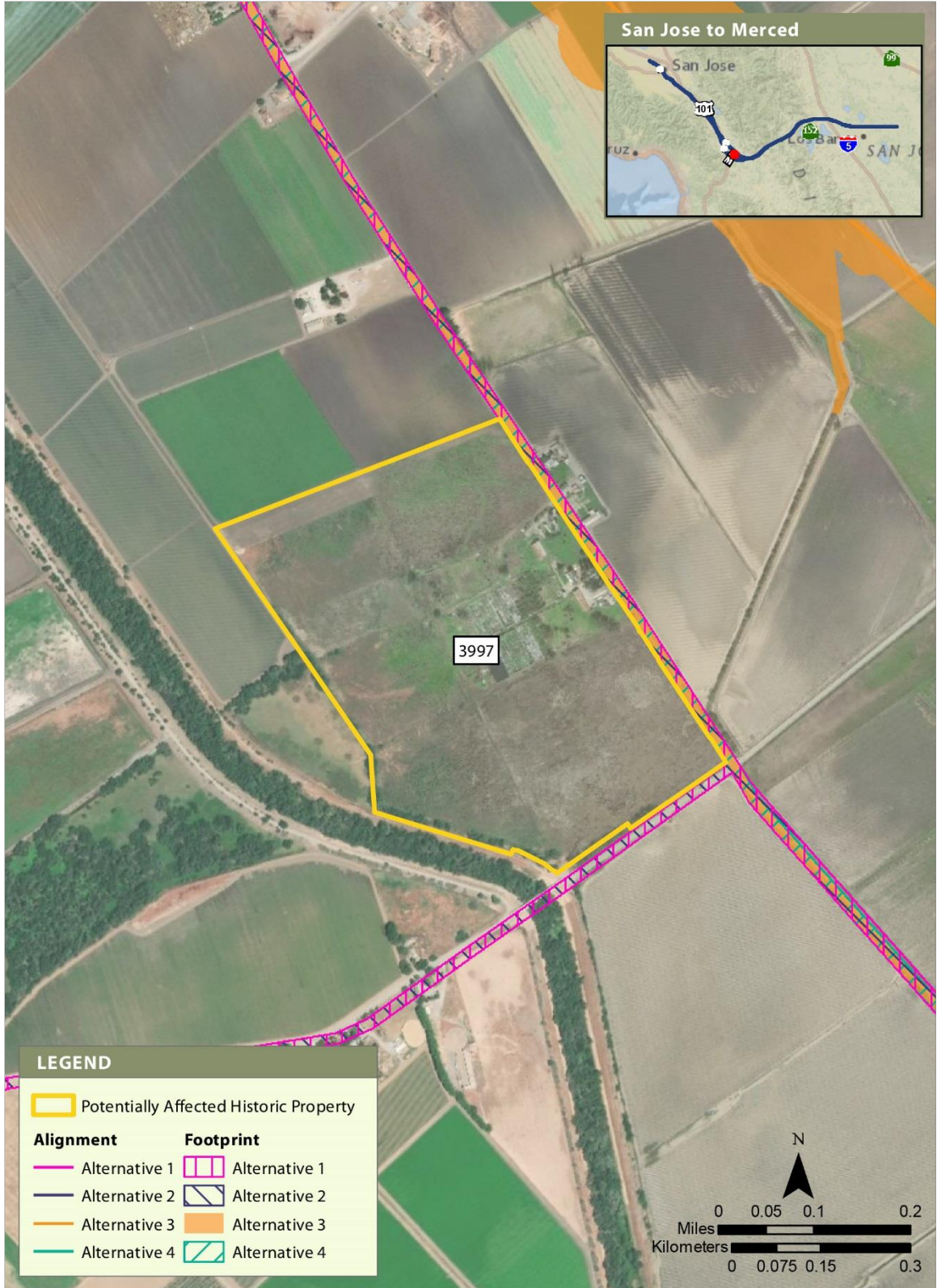
APRIL 2019

Figure 38 Built Resource Site 3906



APRIL 2019

Figure 39 Built Resource Site 3925



APRIL 2019

Figure 40 Built Resource Site 3997



APRIL 2019

Figure 41 Built Resource Site 4024



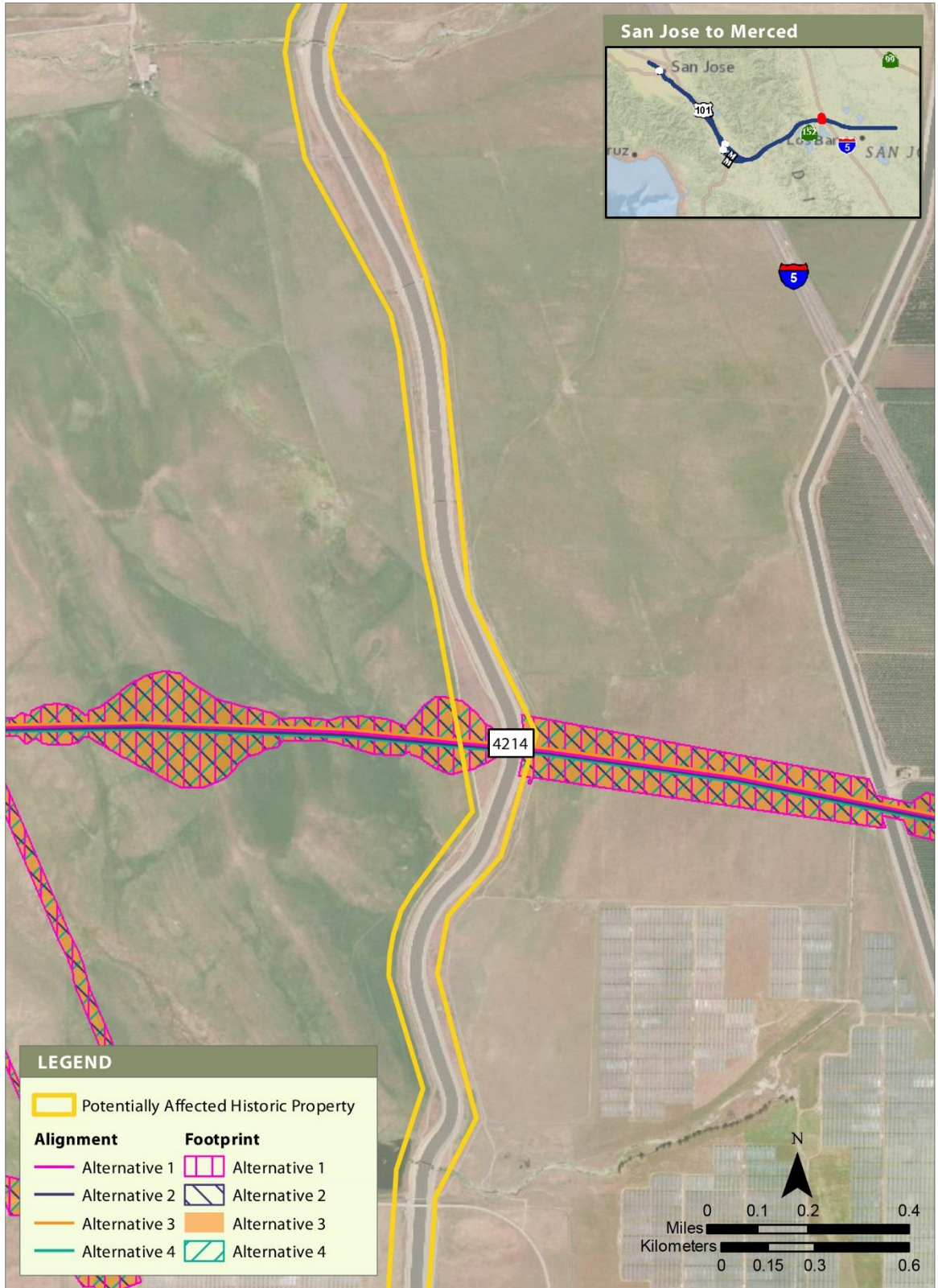
APRIL 2019

Figure 42 Built Resource Site 4100



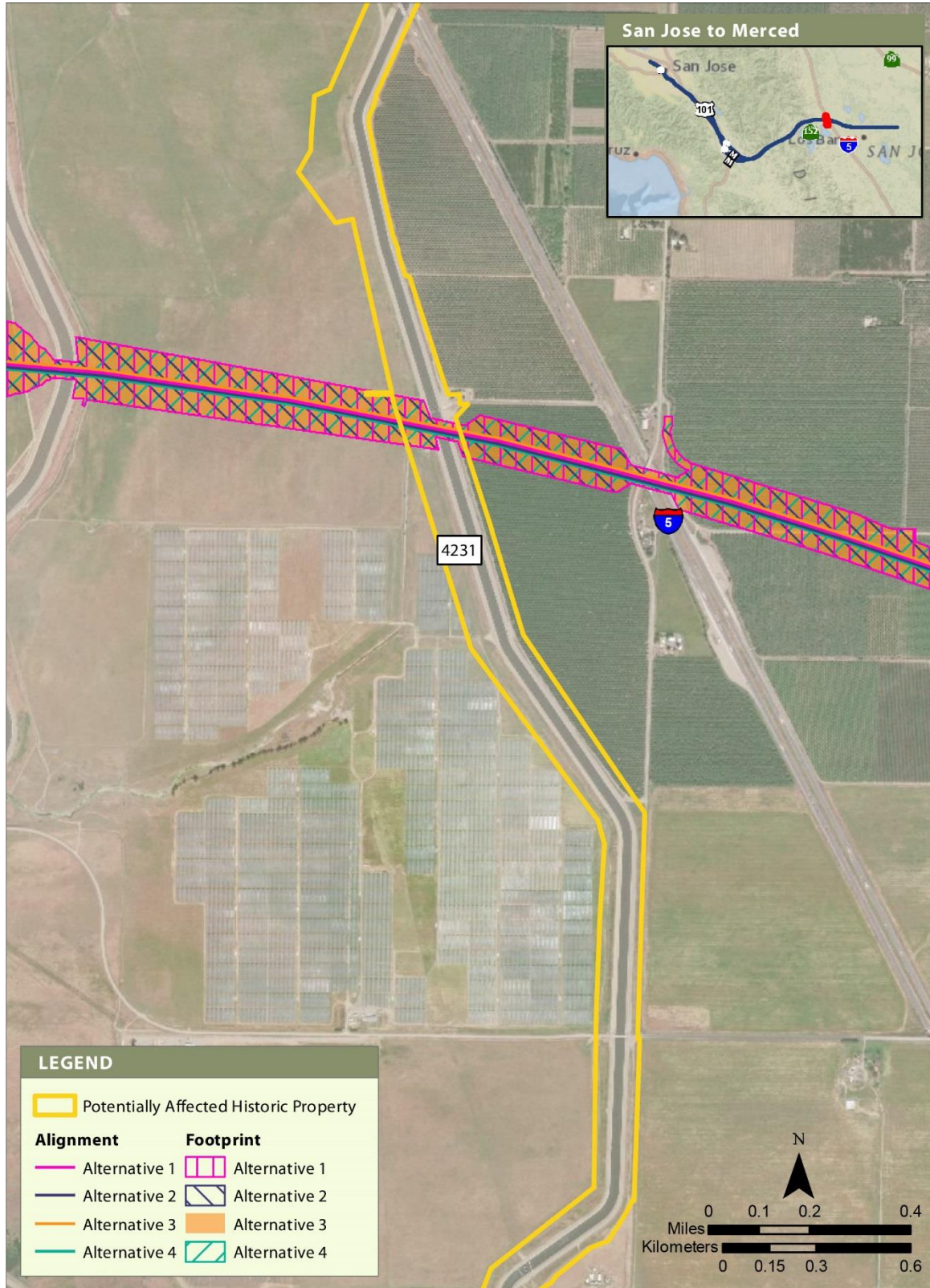
APRIL 2019

Figure 43 Built Resource Site 4140



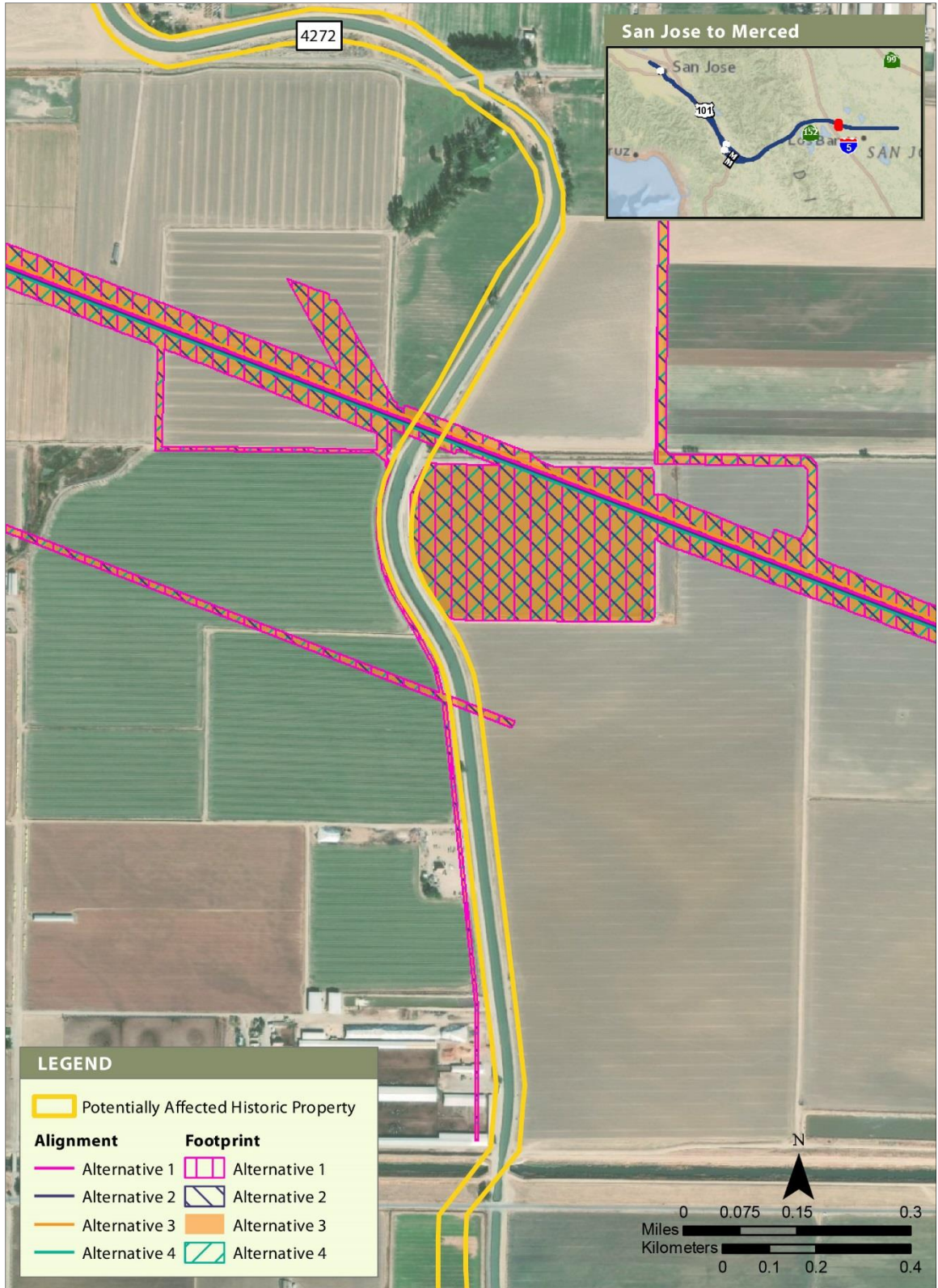
APRIL 2019

Figure 44 Built Resource Site 4214



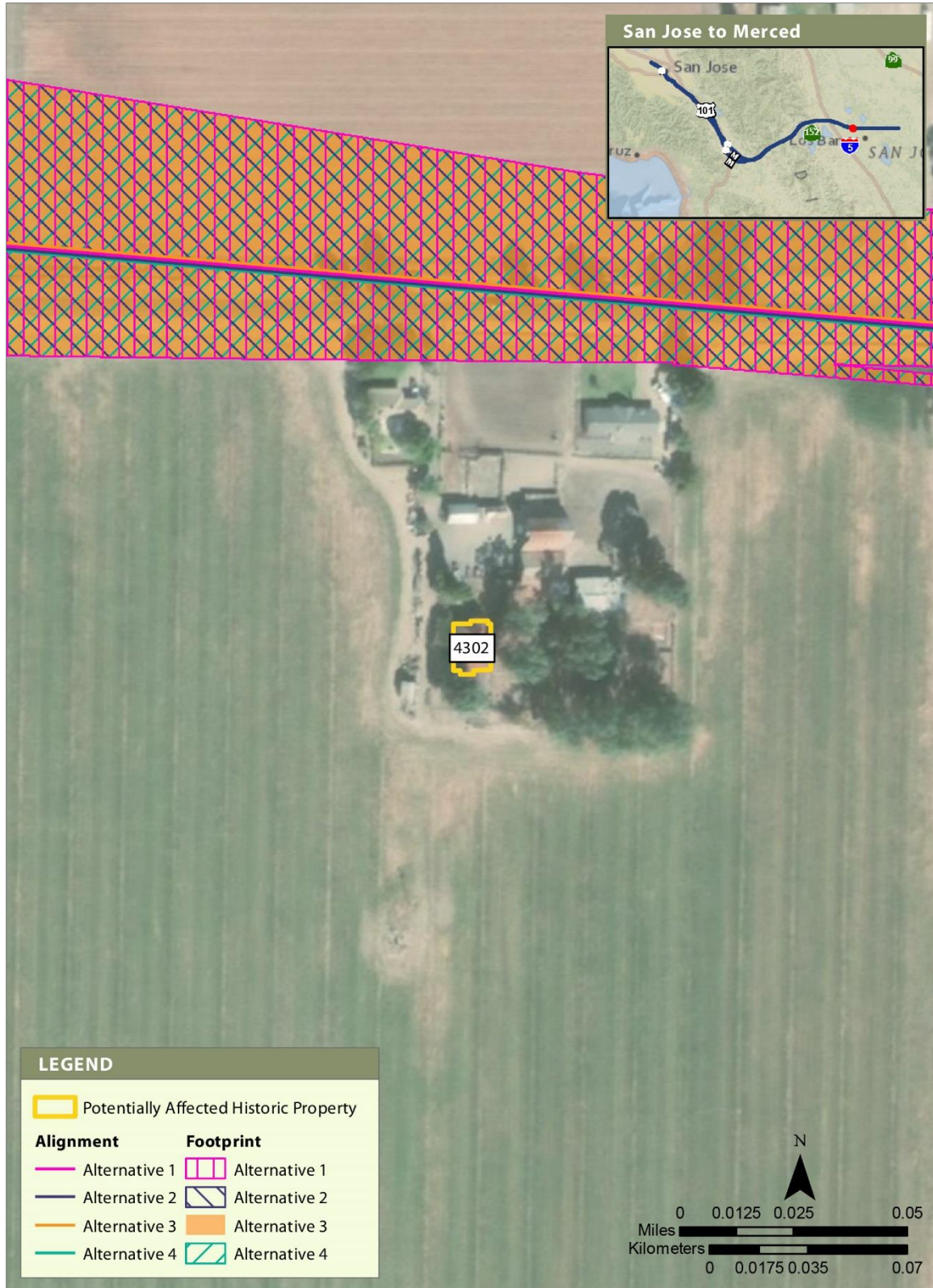
APRIL 2019

Figure 45 Built Resource Site 4231



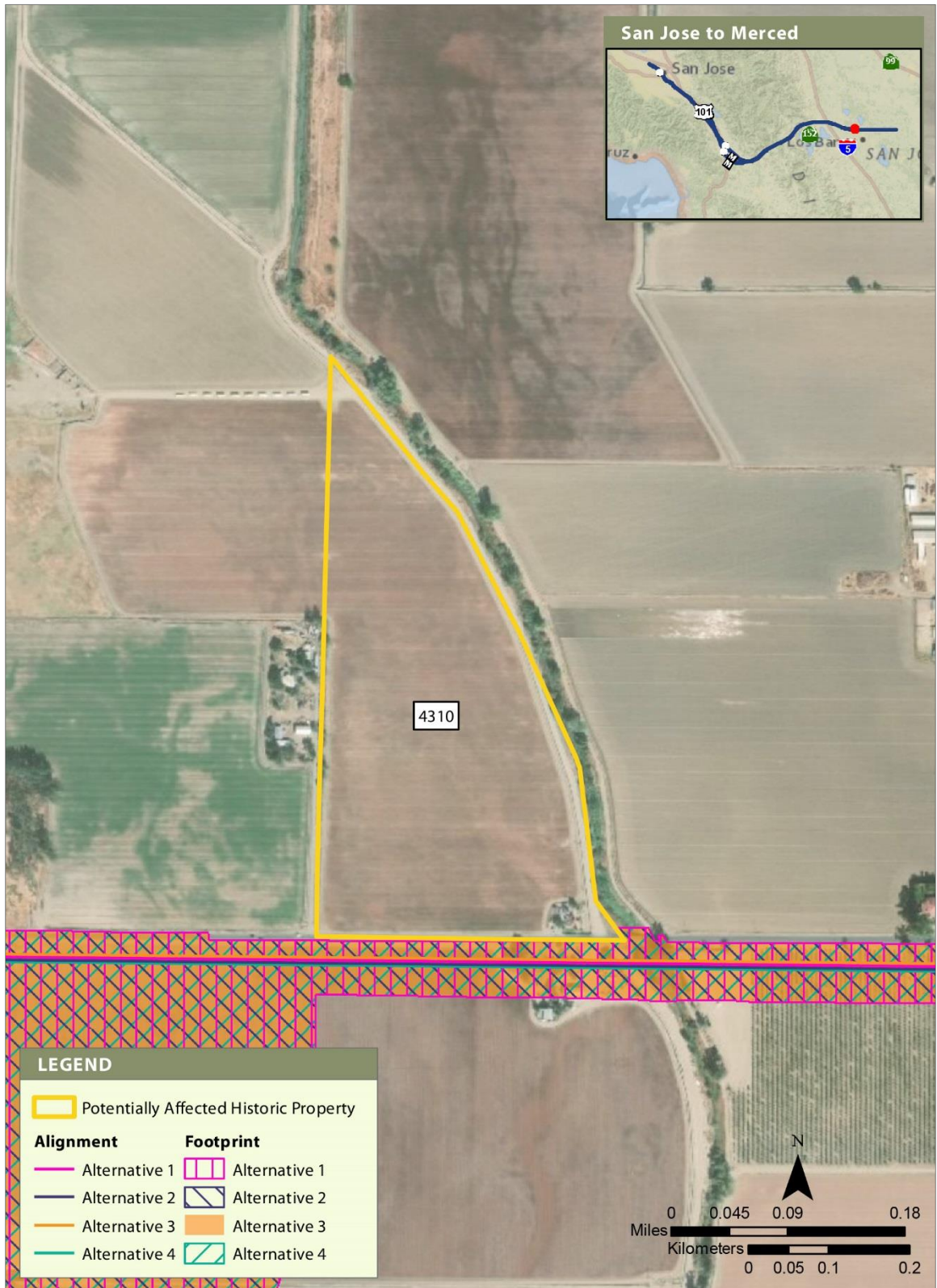
APRIL 2019

Figure 46 Built Resource Site 4272



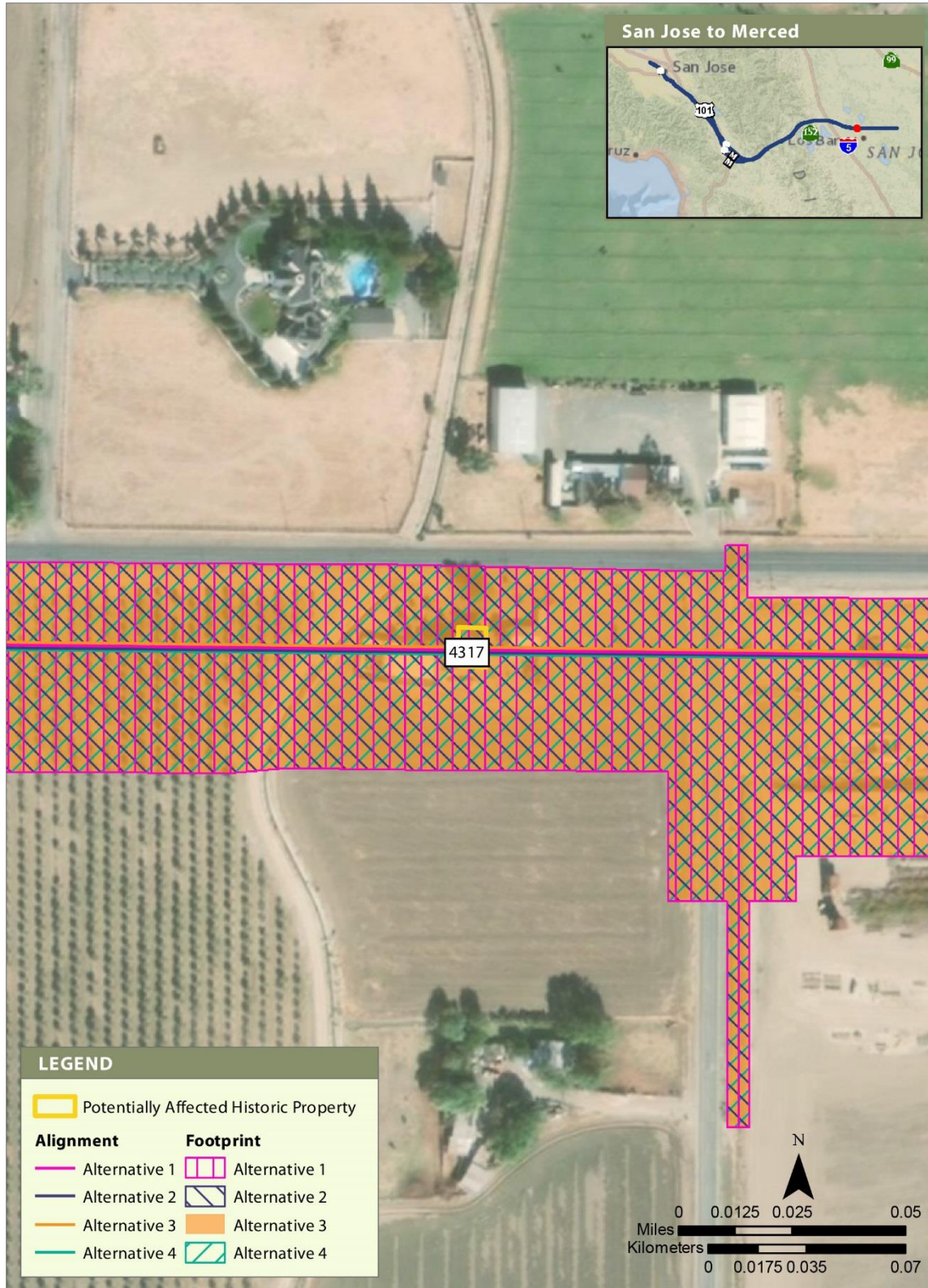
APRIL 2019

Figure 47 Built Resource Site 4302



APRIL 2019

Figure 48 Built Resource Site 4310



APRIL 2019

Figure 49 Built Resource Site 4317



APRIL 2019

Figure 50 Built Resource Site 4594



Figure 51 Built Resource Site 4652