

APPENDIX 2-A: ROADWAY CROSSINGS, MODIFICATIONS, AND CLOSURES

APPENDIX 2-A ROADWAY CROSSINGS, MODIFICATIONS, AND CLOSURES

Table 1 Proposed Roadway Crossings of High-Speed Rail, Modifications, and Closures

Type	Alternative	Design Option	Roadway/Path	Existing Road/Path Grade at Roadway Xing	Proposed Road/Path Profile at HSR	Prop. HSR Grade (Above or Below) at Roadway Xing	Grade Separation	Closure	Modification	City	County
Existing	1	Viaduct to I-880	Scott Blvd	Aerial	No change	Below	N/A	N/A	N/A	Santa Clara	Santa Clara
Existing	1	Viaduct to I-880	Lafayette Street	Trench/cut	No change	Above	N/A	N/A	N/A	Santa Clara	Santa Clara
Existing	1	Viaduct to I-880	De La Cruz Boulevard	Aerial	No change	Below	N/A	N/A	N/A	Santa Clara	Santa Clara
Existing	1	Viaduct to I-880	Nimitz Freeway (I-880)	Aerial	No change	Below	N/A	N/A	N/A	San Jose	Santa Clara
New Road Crossing	1	Viaduct to I-880	West Hedding Street	Aerial	Aerial	Below	N/A	N/A	Bridge replacement	San Jose	Santa Clara
New Bike/Ped. Crossing	1	Viaduct to I-880	College Park Station Ped. Underpass	N/A	N/A	Above	N/A	N/A	New ped. underpass through retained fill	San Jose	Santa Clara
Road Closure	1	Viaduct to I-880	Stockton Street	N/A	N/A	N/A	N/A	Yes	Stockton St. converted to cul-de-sac	San Jose	Santa Clara
Road Closure	1	Viaduct to I-880	University Avenue	N/A	N/A	N/A	N/A	Yes	Converted to cul-de-sac	San Jose	Santa Clara
Road Closure	1	Viaduct to I-880	Emory St.	N/A	N/A	N/A	N/A	Yes	Converted to cul-de-sac	San Jose	Santa Clara
Road Closure	1	Viaduct to I-880	Chestnut St.	N/A	N/A	N/A	N/A	Yes	Realigned, closed from Asbury St. to W. Taylor St.	San Jose	Santa Clara
New Road Crossing	1	Viaduct to I-880	West Taylor Street	Trench/cut	No change	Above	N/A	N/A	Depress W. Taylor to accommodate new bridge for UPR T-13, UPRR MT1, Caltrain MT2	San Jose	Santa Clara
New Road Crossing	1	Viaduct to I-880	Cinnabar Street	At-grade	No change	Above	N/A	N/A	N/A	San Jose	Santa Clara
New Road Crossing	1	Viaduct to I-880	North Montgomery Street	At-grade	No change	Above	N/A	N/A	Realign roadway, extend to provide property access	San Jose	Santa Clara
New Road Crossing	1	Viaduct to I-880	West Julian Street	At-grade	No change	Above	N/A	N/A	N/A	San Jose	Santa Clara
New Road Crossing	1	Viaduct to I-880	West Santa Clara	Trench/cut	No change	Above	N/A	N/A	N/A	San Jose	Santa Clara
Roadway Modification	1	Viaduct to I-880	Stover St.	N/A	N/A	N/A	N/A	N/A	Extend Stover St. from S. Montgomery St. to Autumn St.	San Jose	Santa Clara
Roadway Modification	1	Viaduct to I-880	Crandal St.	N/A	N/A	N/A	N/A	N/A	Extend from S. Montgomery St. to Autumn St.	San Jose	Santa Clara
Roadway Modification	1	Viaduct to I-880	Cahill Street	N/A	N/A	N/A	N/A	N/A	Roadway modification – extend to Park Ave; convert to transit only lanes	San Jose	Santa Clara
New Road Crossing	1	Viaduct to I-880	Park Avenue	At-grade	No change	Above	N/A	N/A	N/A	San Jose	Santa Clara
New Road Crossing	1	Viaduct to I-880	West San Carlos Street	At-grade	No change	Above	N/A	N/A	N/A	San Jose	Santa Clara
New Road Crossing	1	Viaduct to I-880	Royal Avenue	At-grade	No change	Above	N/A	N/A	N/A	San Jose	Santa Clara
New Road Crossing	1	Viaduct to I-880	Auzerais Avenue	At-grade	No change	Above	N/A	N/A	N/A	San Jose	Santa Clara
New Road Crossing	1	Viaduct to I-880	Bird Avenue	At-grade	No change	Above	N/A	N/A	N/A	San Jose	Santa Clara
New Road Crossing	1	Viaduct to I-880	I-280 NB on ramp	At-grade	No change	Above	N/A	N/A	N/A	San Jose	Santa Clara
New Road Crossing	1	Viaduct to I-880	I-280	At-grade	No change	Above	N/A	N/A	N/A	San Jose	Santa Clara

Type	Alternative	Design Option	Roadway/Path	Existing Road/Path Grade at Roadway Xing	Proposed Road/Path Profile at HSR	Prop. HSR Grade (Above or Below) at Roadway Xing	Grade Separation	Closure	Modification	City	County
New Road Crossing	1	Viaduct to I-880	I-280 SB off ramp	At-grade	No change	Above	N/A	N/A	N/A	San Jose	Santa Clara
New Road Crossing	1	Viaduct to I-880	I-280 on ramp	Aerial	No change	Above	N/A	N/A	N/A	San Jose	Santa Clara
New Road Crossing	1	Viaduct to I-880	I-280 on ramp	Aerial	No change	Above	N/A	N/A	N/A	San Jose	Santa Clara
New Road Crossing	1	Viaduct to I-880	SR 87 Interchange	At-grade	No change	Above	N/A	N/A	N/A	San Jose	Santa Clara
New Road Crossing	1	Viaduct to I-880	SR 87 Connector	At-grade	No change	Above	N/A	N/A	N/A	San Jose	Santa Clara
New Bike/Ped. Crossing	1	Viaduct to I-880	Guadalupe River Trail	At-grade	No change	Above	N/A	N/A	N/A	San Jose	Santa Clara
New Road Crossing	1	Viaduct to I-880	West Virginia Street	At-grade	No change	Above	N/A	N/A	N/A	San Jose	Santa Clara
New Road Crossing	1	Viaduct to I-880	Willow Street	At-grade	No change	Above	N/A	N/A	N/A	San Jose	Santa Clara
New Road Crossing	1	Viaduct to I-880	SR 87 on ramp	At-grade	No change	Above	N/A	N/A	Ramp realignment	San Jose	Santa Clara
New Bike/Ped. Crossing	1	Viaduct to I-880	Highway 87 Bikeway	At-grade	No change	Above	N/A	N/A	Realignment to avoid viaduct columns	San Jose	Santa Clara
New Road Crossing	1	Viaduct to I-880	West Alma Avenue	Trench/cut	No change	Above	N/A	N/A	N/A	San Jose	Santa Clara
Existing	2, 3	Viaduct to Scott Blvd	Scott Blvd	N/A	N/A	Below	N/A	N/A	N/A	Santa Clara	Santa Clara
Existing	2, 3	Viaduct to Scott Blvd	Lafayette Street	N/A	N/A	Above	N/A	N/A	N/A	Santa Clara	Santa Clara
New Bike/Ped. Crossing	2,3	Viaduct to Scott Blvd	Lafayette Street	Aerial	Below grade	Above	N/A	N/A	Change from over- to underpass	Santa Clara	Santa Clara
Road Closure	2,3	Viaduct to Scott Blvd	Grant St.	N/A	N/A	N/A	N/A	Yes	Road shortened.	Santa Clara	Santa Clara
Road Modification	2, 3	Viaduct to Scott Blvd	De La Cruz Boulevard	Aerial	Trench/Cut	Above	Y	N/A	Grade Separation	Santa Clara	Santa Clara
New Road Crossing	2, 3	Viaduct to Scott Blvd	Nimitz Freeway (I-880)	Aerial	No change	Above	N/A	N/A	N/A	San Jose	Santa Clara
Road Modification	2, 3	Viaduct to Scott Blvd	West Hedding Street	Aerial	Trench/Cut	Above	Y	N/A	Grade Separation	San Jose	Santa Clara
Road Closure	2, 3	Viaduct to Scott Blvd	Stockton Street	N/A	N/A	N/A	N/A	Yes	Converted to cul-de-sac	San Jose	Santa Clara
Road Closure	2, 3	Viaduct to Scott Blvd	University Avenue	N/A	N/A	N/A	N/A	Yes	Converted to cul-de-sac	San Jose	Santa Clara
Road Closure	2, 3	Viaduct to Scott Blvd	Emory St.	N/A	N/A	N/A	N/A	Yes	Converted to cul-de-sac	San Jose	Santa Clara
Road Closure	2, 3	Viaduct to Scott Blvd	Chestnut St.	N/A	N/A	N/A	N/A	Yes	Realigned	San Jose	Santa Clara
New Road Crossing	2, 3	Viaduct to Scott Blvd	West Taylor Street	Trench/cut	No change	Above	N/A	N/A	Realign W/B Taylor Street to N/B Chestnut Street	San Jose	Santa Clara

Type	Alternative	Design Option	Roadway/Path	Existing Road/Path Grade at Roadway Xing	Proposed Road/Path Profile at HSR	Prop. HSR Grade (Above or Below) at Roadway Xing	Grade Separation	Closure	Modification	City	County
New Road Crossing	2, 3	Viaduct to Scott Blvd	Cinnabar Street	At-grade	No change	Above	N/A	N/A	N/A	San Jose	Santa Clara
New Road Crossing	2, 3	Viaduct to Scott Blvd	West Julian Street	At-grade	No change	Above	N/A	N/A	N/A	San Jose	Santa Clara
New Road Crossing	2, 3	Viaduct to Scott Blvd	North Montgomery Street	At-grade	No change	Above	N/A	N/A	Realign roadway, extend to provide property access	San Jose	Santa Clara
New Road Crossing	2, 3	Viaduct to Scott Blvd	West Julian Street	At-grade	No change	Above	N/A	N/A	N/A	San Jose	Santa Clara
New Road Crossing	2, 3	Viaduct to Scott Blvd	West Santa Clara	Trench/cut	No change	Above	N/A	N/A	N/A	San Jose	Santa Clara
Roadway Modification	2, 3	Viaduct to Scott Blvd	Stover St.	N/A	N/A	N/A	N/A	N/A	Extend Stover St. from S. Montgomery St. to Autumn St.	San Jose	Santa Clara
Roadway Modification	2, 3	Viaduct to Scott Blvd	Crandal St.	N/A	N/A	N/A	N/A	N/A	Extend from S. Montgomery St. to Autumn St.	San Jose	Santa Clara
Roadway Modification	2, 3	Viaduct to Scott Blvd	Cahill Street	N/A	N/A	N/A	N/A	N/A	Roadway modification – extend to Park Ave; convert to transit only lanes	San Jose	Santa Clara
New Road Crossing	2, 3	Viaduct to Scott Blvd	Park Avenue	At-grade	No change	Above	N/A	N/A	N/A	San Jose	Santa Clara
New Road Crossing	2, 3	Viaduct to Scott Blvd	West San Carlos Street	At-grade	No change	Above	N/A	N/A	N/A	San Jose	Santa Clara
New Road Crossing	2, 3	Viaduct to Scott Blvd	Royal Avenue	At-grade	No change	Above	N/A	N/A	N/A	San Jose	Santa Clara
New Road Crossing	2, 3	Viaduct to Scott Blvd	Auzerais Avenue	At-grade	No change	Above	N/A	N/A	N/A	San Jose	Santa Clara
New Road Crossing	2, 3	Viaduct to Scott Blvd	Bird Avenue	At-grade	No change	Above	N/A	N/A	N/A	San Jose	Santa Clara
New Road Crossing	2, 3	Viaduct to Scott Blvd	I-280 NB on ramp	At-grade	No change	Above	N/A	N/A	N/A	San Jose	Santa Clara
New Road Crossing	2, 3	Viaduct to Scott Blvd	I-280	At-grade	No change	Above	N/A	N/A	N/A	San Jose	Santa Clara
New Road Crossing	2, 3	Viaduct to Scott Blvd	I-280 SB off ramp	At-grade	No change	Above	N/A	N/A	N/A	San Jose	Santa Clara
New Road Crossing	2, 3	Viaduct to Scott Blvd	I-280 on ramp	Aerial	No change	Above	N/A	N/A	N/A	San Jose	Santa Clara
New Road Crossing	2, 3	Viaduct to Scott Blvd	I-280 on ramp	Aerial	No change	Above	N/A	N/A	N/A	San Jose	Santa Clara
New Road Crossing	2, 3	Viaduct to Scott Blvd	SR 87 Interchange	At-grade	No change	Above	N/A	N/A	N/A	San Jose	Santa Clara
New Road Crossing	2, 3	Viaduct to Scott Blvd	SR 87 Connector	At-grade	No change	Above	N/A	N/A	N/A	San Jose	Santa Clara

Type	Alternative	Design Option	Roadway/Path	Existing Road/Path Grade at Roadway Xing	Proposed Road/Path Profile at HSR	Prop. HSR Grade (Above or Below) at Roadway Xing	Grade Separation	Closure	Modification	City	County
New Bike/Ped. Crossing	2, 3	Viaduct to Scott Blvd	Guadalupe River Trail	At-grade	No change	Above	N/A	N/A	N/A	San Jose	Santa Clara
New Road Crossing	2, 3	Viaduct to Scott Blvd	West Virginia Street	At-grade	No change	Above	N/A	N/A	N/A	San Jose	Santa Clara
New Road Crossing	2, 3	Viaduct to Scott Blvd	Willow Street	At-grade	No change	Above	N/A	N/A	N/A	San Jose	Santa Clara
New Road Crossing	2, 3	Viaduct to Scott Blvd	SR 87 on ramp	At-grade	No change	Above	N/A	N/A	Ramp realignment	San Jose	Santa Clara
New Bike/Ped. Crossing	2, 3	Viaduct to Scott Blvd	Highway 87 Bikeway	At-grade	No change	Above	N/A	N/A	Realignment to avoid viaduct columns	San Jose	Santa Clara
New Road Crossing	2, 3	Viaduct to Scott Blvd	West Alma Avenue	Trench/cut	No change	Above	N/A	N/A	N/A	San Jose	Santa Clara
Existing	4	Blended, At Grade	Scott Blvd	Aerial	No change	Below	N/A	N/A	N/A	Santa Clara	Santa Clara
Existing	4	Blended, At Grade	Lafayette Street	Trench/cut	No change	Above	N/A	N/A	N/A	Santa Clara	Santa Clara
Existing	4	Blended, At Grade	De La Cruz Boulevard	Aerial	No change	Below	N/A	N/A	N/A	Santa Clara	Santa Clara
Existing	4	Blended, At Grade	Nimitz Freeway (I-880)	Aerial	No change	Below	N/A	N/A	N/A	San Jose	Santa Clara
Existing	4	Blended, At Grade	West Hedding Street	Aerial	No change	Below	N/A	N/A	N/A	San Jose	Santa Clara
Existing	4	Blended, At Grade	West Taylor Street	At-grade	No change	Above	N/A	N/A	Depress W. Taylor to accommodate new bridge for UPR T-13, UPRR MT1, Caltrain MT2	San Jose	Santa Clara
Existing	4	Blended, At Grade	West Taylor Street	At-grade	UP aerial	UP above	N/A	N/A	N/A	San Jose	Santa Clara
Existing	4	Blended, At Grade	West Julian Street	At-grade	No change	Above	N/A	N/A	N/A	San Jose	Santa Clara
Existing	4	Blended, At Grade	West Santa Clara	At-grade	No change	Above	N/A	N/A	N/A	San Jose	Santa Clara
Roadway Modification	4	Blended, At Grade	Cahill Street	N/A	N/A	N/A	N/A	N/A	Roadway modification – extend to Otterson; convert to transit only lanes	San Jose	Santa Clara
Existing	4	Blended, At Grade	Park Avenue	At-grade	No change	Above	N/A	N/A	N/A	San Jose	Santa Clara
Existing	4	Blended, At Grade	West San Carlos Street	At-grade	No change	Below	N/A	N/A	N/A	San Jose	Santa Clara
Existing	4	Blended, At Grade	Auzerais Avenue	At-grade	No change	At-grade	N/A	N/A	Quad gates	San Jose	Santa Clara
Existing	4	Blended, At Grade	Bird Avenue	At-grade	No change	Above	N/A	N/A	N/A	San Jose	Santa Clara
Existing	4	Blended, At Grade	I-280	At-grade	No change	Above	N/A	N/A	MT1 and MT2	San Jose	Santa Clara
New Road Crossing	4	Blended, At Grade	I-280	At-grade	No change	Above	N/A	N/A	MT3 on a new bridge structure	San Jose	Santa Clara
Existing	4	Blended, At Grade	W. Virginia St.	At-grade	No change	At-grade	N/A	N/A	Quad gates	San Jose	Santa Clara
Existing	4	Blended, At Grade	Bird Avenue	At-grade	No change	Aerial	N/A	N/A	Replace Bird Ave. underpasses	San Jose	Santa Clara
Existing	4	Blended, At Grade	Delmas Avenue	At-grade	No change	Aerial	N/A	N/A	Replace Delmas Ave. underpasses	San Jose	Santa Clara
Existing	4	Blended, At Grade	Prevost St.	At-grade	No change	Aerial	N/A	N/A	MT1 and MT2	San Jose	Santa Clara
New Road Crossing	4	Blended, At Grade	Prevost St.	At-grade	No change	Aerial	N/A	N/A	MT3 on a new bridge structure	San Jose	Santa Clara

Type	Alternative	Design Option	Roadway/Path	Existing Road/Path Grade at Roadway Xing	Proposed Road/Path Profile at HSR	Prop. HSR Grade (Above or Below) at Roadway Xing	Grade Separation	Closure	Modification	City	County
Road Modification	4	Blended, At Grade	Fuller Ave.	N/A	N/A	N/A	N/A	N/A	Realignment of Fuller Ave. dead end	San Jose	Santa Clara
Existing	4	Blended, At Grade	SR 87	At-grade	No change	Above	N/A	N/A	MT1 and MT2	San Jose	Santa Clara
New Road Crossing	4	Blended, At Grade	SR 87	At-grade	No change	Above	N/A	N/A	MT3 on a new bridge structure	San Jose	Santa Clara
Bike/Ped. Crossing	4	Blended, At Grade	Guadalupe River Trail	At-grade	No change	Above	N/A	N/A	MT1 and MT2	San Jose	Santa Clara
New Bike/Ped. Crossing	4	Blended, At Grade	Guadalupe River Trail	At-grade	No change	Above	N/A	N/A	MT3 on a new bridge structure	San Jose	Santa Clara
Existing	4	Blended, At Grade	Willow Street	At-grade	No change	Above	N/A	N/A	MT1 and MT2	San Jose	Santa Clara
New Road Crossing	4	Blended, At Grade	Willow Street	At-grade	No change	Above	N/A	N/A	MT3 on a new bridge structure	San Jose	Santa Clara
Existing	4	Blended, At Grade	West Alma Avenue	At-grade	No change	Above	N/A	N/A	MT1 and MT2	San Jose	Santa Clara
New Road Crossing	4	Blended, At Grade	West Alma Avenue	At-grade	No change	Above	N/A	N/A	MT3 on a new bridge structure	San Jose	Santa Clara
Monterey Corridor											
New Road Crossing	1, 3	Viaduct	Almaden Road	N/A	N/A	Above	N/A	N/A	N/A	San Jose	Santa Clara
New Road Crossing	1, 3	Viaduct	Almaden Expressway	N/A	N/A	Below	N/A	N/A	Roadway modification – Realign SR 87 on ramp	San Jose	Santa Clara
New Road Crossing	1, 3	Viaduct	Curtner Avenue	N/A	N/A	Below	N/A	N/A	N/A	San Jose	Santa Clara
Bike/Ped. Modification	1, 3	Viaduct	Communication Hill	N/A	N/A	Below	N/A	Yes	Remove ped . Bridge	San Jose	Santa Clara
Roadway Modification	1,3	Viaduct	SB Monterey	At-grade	No change	Above	N/A	N/A	Road widening for bus turn out, road realignment.	San Jose	Santa Clara
New Road Crossing	1, 3	Viaduct	Capitol Expressway	Aerial	No change	Above	N/A	N/A	N/A	San Jose	Santa Clara
Road Closure	1, 3	Viaduct	Monterey Highway	N/A	N/A	N/A	N/A	2 lanes	Reduction from 6 to 4 lanes from Southside Dr. to between Blossom Hill and Ford Rd.	San Jose	Santa Clara
Road Closure	1, 3	Viaduct	Monterey Highway between Senter Road and Skyway Drive	N/A	N/A	N/A	N/A	1 lane	Removal of southbound left turn lane into shopping center	San Jose	Santa Clara
New Road Crossing	1, 3	Viaduct	Skyway Drive Intersection	At-grade	No change	Above	N/A	N/A	N/A	San Jose	Santa Clara
New Road Crossing	1, 3	Viaduct	Branham Lane Intersection	At-grade	No change	Above	N/A	N/A	N/A	San Jose	Santa Clara
New Road Crossing	1, 3	Viaduct	Roeder Road/Chynoweth Avenue Intersection	At-grade	No change	Above	N/A	N/A	N/A	San Jose	Santa Clara
Road Closure	1, 3	Viaduct	Monterey Highway between Roeder Road/Chynoweth Avenue and Blossom Hill Road	N/A	N/A	N/A	N/A	1 lane	Removal of southbound left turn lane into shopping center	San Jose	Santa Clara
New Road Crossing	1, 3	Viaduct	Blossom Hill Road	Aerial	No change	Above	N/A	N/A	N/A	San Jose	Santa Clara

Type	Alternative	Design Option	Roadway/Path	Existing Road/Path Grade at Roadway Xing	Proposed Road/Path Profile at HSR	Prop. HSR Grade (Above or Below) at Roadway Xing	Grade Separation	Closure	Modification	City	County
New Bike/Ped. Crossing	1, 3	Viaduct	Xander's Crossing Pedestrian Bridge	Aerial	No change	Above	N/A	N/A	N/A	San Jose	Santa Clara
Road Modification	1, 3	Viaduct	Flintwell Way	N/A	N/A	N/A	N/A	N/A	Widen Monterey at Flintwell Way	San Jose	Santa Clara
New Road Crossing	1, 3	Viaduct	SR 85/West Valley Freeway	N/A	N/A	Above	N/A	N/A	N/A	San Jose	Santa Clara
Road Closure	1, 3	Viaduct	Hicks Ln.	N/A	N/A	N/A	N/A	1 lane	Removal of southbound left turn lane	San Jose	Santa Clara
Road Modification	1,3	Viaduct	Bernal Road on/off ramps to Monterey	N/A	N/A	N/A	N/A	N/A	Widen roadway	San Jose	Santa Clara
New Road Crossing	1, 3	Viaduct	Bernal Road	Aerial	No change	Above	N/A	N/A	N/A	San Jose	Santa Clara
New Road Crossing	2	At Grade	Almaden Road	At-grade	No change	Above	N/A	N/A	N/A	San Jose	Santa Clara
New Road Crossing	2	At Grade	Almaden Expressway	Aerial	No change	Below	N/A	N/A	N/A	San Jose	Santa Clara
New Road Crossing	2	At Grade	Curtner Avenue	Aerial	No change	Below	N/A	N/A	N/A	San Jose	Santa Clara
Bike/Ped. Modification	2	Viaduct	Communication Hill	N/A	N/A	Below	N/A	Yes	Remove ped. bridge	San Jose	Santa Clara
Roadway Modification	2	At Grade	Monterey Rd. from Southside Dr. to Bernal Way	N/A	N/A	N/A	N/A	N/A	Realignment to the east of HSR.	San Jose	Santa Clara
Roadway Modification	2	At Grade	Monterey Highway north of Fehren	N/A	N/A	N/A	N/A	N/A	Widen roadway for bus turn out	San Jose	Santa Clara
Road Closure	2	At Grade	N/A	N/A	N/A	N/A	N/A	2 lanes	Reduction from 6 to 4 lanes from Fehren Dr. to Blossom Hill.	San Jose	Santa Clara
New Road Crossing	2	At Grade	Capitol Expressway	Aerial	No change	Below	N/A	N/A	N/A	San Jose	Santa Clara
Roadway Modification	2	At Grade	Capitol Expressway	N/A	N/A	Below	N/A	N/A	Bridge modification	San Jose	Santa Clara
Road Closure	2	At Grade	Monterey Highway between Senter Road and Skyway Drive	N/A	N/A	N/A	N/A	1 lane	Removal of southbound left turn lane into shopping center	San Jose	Santa Clara
New Road Crossing	2	At Grade	Skyway Drive	At-grade	Below grade	Above	Y	N/A	Grade separation	San Jose	Santa Clara
Road Modification	2 var. b	At Grade	Monterey Rd. at Skyway Drive	At-grade	Below grade	N/A	N/A	N/A	Variant A depress Skyway Drive and realign ramp return to Monterey Road; Variant B depress Skyway Drive and Monterey Road	San Jose	Santa Clara
New Road Crossing	2	At Grade	Branham Lane	At-grade	Below grade	Above	Y	N/A	Grade Separation	San Jose	Santa Clara
New Bike/Ped. Crossing	2	At Grade	Pedestrian Bridge	At-grade	Aerial	Below	N/A	N/A	Pedestrian bridge over Monterey and HSR	San Jose	Santa Clara
Road Closure	2	At Grade	Monterey Highway and Rice Way Intersection	N/A	N/A	N/A	N/A	Yes	Access from Rice Way to Monterey closed	San Jose	Santa Clara
Road Closure	2	At Grade	N/A	N/A	N/A	N/A	N/A	Yes	Close access from Waterfall Ct. to Chynoweth	San Jose	Santa Clara
Roadway Modification	2	At Grade	N/A	N/A	N/A	N/A	N/A	N/A	Extend Waterfall Ct. to Broken Lance Ct.	San Jose	Santa Clara

Type	Alternative	Design Option	Roadway/Path	Existing Road/Path Grade at Roadway Xing	Proposed Road/Path Profile at HSR	Prop. HSR Grade (Above or Below) at Roadway Xing	Grade Separation	Closure	Modification	City	County
New Road Crossing	2	At Grade	Roeder Road/Chynoweth Avenue	At-grade	Below grade	Above	Y	N/A	Grade Separation – depressed roadway	San Jose	Santa Clara
Road Closure	2	At Grade	Monterey Highway between Roeder Road/Chynoweth Avenue and Blossom Hill Road	N/A	N/A	N/A	N/A	1 lane	Removal of southbound left turn lane into shopping center	San Jose	Santa Clara
New Road Crossing	2	At Grade	Blossom Hill Road	Aerial	No change	Below	N/A	N/A	N/A	San Jose	Santa Clara
Roadway Modification	2	At Grade	Blossom Hill Road Southbound Ramp from Monterey Highway to Blossom Hill Road	N/A	N/A	N/A	N/A	N/A	Roadway modification and realignment	San Jose	Santa Clara
New Bike/Ped. Crossing	2	At Grade	Xander's Crossing Pedestrian Bridge	Aerial	No change	Below	N/A	N/A	Stair well modification	San Jose	Santa Clara
Bike/Ped. Modification	2	At Grade	Hitachi Pedestrian Bridge	N/A	N/A	N/A	N/A	N/A	Ramp and stairwell relocation	San Jose	Santa Clara
New Bike/Ped. Crossing	2	At Grade	Blossom Hill Pedestrian Bridge	N/A	Aerial	Below	N/A	N/A	New pedestrian overcrossing	San Jose	Santa Clara
New Road Crossing	2	At Grade	SR 85/West Valley Freeway	Aerial	No change	Below	N/A	N/A	New crash wall under SR85/W. Valley Freeway	San Jose	Santa Clara
New Road Crossing	2	At Grade	Bernal Road	Aerial	No change	Below	N/A	N/A	New crash wall under Bernal Rd.	San Jose	Santa Clara
New Road Crossing	4	Blended, At Grade	Almaden Road	At-grade	No change	Above	N/A	N/A	N/A	San Jose	Santa Clara
Existing	4	Blended, At Grade	Almaden Expressway	At-grade	No change	Below	N/A	N/A	New crash wall	San Jose	Santa Clara
Existing	4	Blended, At Grade	Curtner Avenue	Aerial	No change	Below	N/A	N/A	New crash walls	San Jose	Santa Clara
Existing Bike/Ped. Crossing	4	Blended, At Grade	Communication Hill Pedestrian Overpass	Aerial	No change	Below	N/A	N/A	N/A	San Jose	Santa Clara
New Bike/Ped. Crossing	4	Blended, At Grade	Capitol Caltrain Pedestrian Overpass	At-grade	Aerial	Below	N/A	N/A	N/A	San Jose	Santa Clara
Existing	4	Blended, At Grade	Capitol Expressway	Aerial	No change	Below	N/A	N/A	New crash walls	San Jose	Santa Clara
Roadway Modification	4	Blended, At Grade	Capitol Expressway	N/A	N/A	Below	N/A	N/A	Bridge modification	San Jose	Santa Clara
Existing	4	Blended, At Grade	Skyway Drive	At-grade	No change	At-grade	N/A	N/A	Quad gates	San Jose	Santa Clara
Existing	4	Blended, At Grade	Branham Lane	At-grade	No change	At-grade	N/A	N/A	Quad gates	San Jose	Santa Clara
Existing	4	Blended, At Grade	Chynoweth Avenue	At-grade	No change	At-grade	N/A	N/A	Quad gates	San Jose	Santa Clara
Existing Bike/Ped. Crossing	4	Blended, At Grade	Blossom Hill Road on-ramp from Monterey Rd.	Aerial	No change	Below	N/A	N/A	N/A	San Jose	Santa Clara
Existing	4	Blended, At Grade	Blossom Hill Road	Aerial	No change	Below	N/A	N/A	New crash walls	San Jose	Santa Clara

Type	Alternative	Design Option	Roadway/Path	Existing Road/Path Grade at Roadway Xing	Proposed Road/Path Profile at HSR	Prop. HSR Grade (Above or Below) at Roadway Xing	Grade Separation	Closure	Modification	City	County
Existing Bike/Ped. Crossing	4	Blended, At Grade	Xander's Crossing Pedestrian Bridge	Aerial	No change	Below	N/A	N/A	N/A	San Jose	Santa Clara
Bike/Ped. Modification	4	Blended, At Grade	Hitachi Pedestrian Bridge	Aerial	No change	Below	N/A	N/A	Replace with pedestrian overpass further south	San Jose	Santa Clara
Road Modification	4	Blended, At Grade	Great Oaks Parkway	N/A	N/A	N/A	N/A	N/A	Realignment	San Jose	Santa Clara
Existing	4	Blended, At Grade	SR 85/West Valley Freeway	Aerial	No change	Below	N/A	N/A	N/A	San Jose	Santa Clara
Existing	4	Blended, At Grade	Bernal Road	Aerial	No change	Below	N/A	N/A	N/A	San Jose	Santa Clara
Morgan Hill to Gilroy											
Roadway Modification	2	Embankment to Downtown Gilroy	Monterey Highway	N/A	N/A	N/A	N/A	N/A	Realignment from Bernal Way to Fisher Creek	San Jose	Santa Clara
Bike/Ped. Modification	2	Embankment to Downtown Gilroy	N/A	N/A	N/A	N/A	N/A	N/A	Trail realignment	San Jose	Santa Clara
Road Closure	2	Embankment to Downtown Gilroy	Blanchard Road	N/A	N/A	N/A	N/A	Yes	Closure of Blanchard Road Intersection with Monterey Highway	San Jose	Santa Clara
Roadway Modification	2	Embankment to Downtown Gilroy	N/A	N/A	N/A	Yes	N/A	N/A	Extension of Blanchard Rd. to the new Emado Ave. extension	San Jose	Santa Clara
Roadway Modification	2	Embankment to Downtown Gilroy	Monterey Highway	N/A	N/A	N/A	N/A	N/A	Realignment from south of Blanchard to Cochrane Rd.	San Jose	Santa Clara
Road Closure	2	Embankment to Downtown Gilroy	Emado Avenue	N/A	N/A	N/A	N/A	Yes	Closure of Emado Avenue Intersection with Monterey Highway	San Jose	Santa Clara
Roadway Modification	2	Embankment to Downtown Gilroy	N/A	N/A	N/A	N/A	N/A	N/A	Extension of Emado Rd. to Santa Teresa	San Jose	Santa Clara
New Road Crossing	2	Embankment to Downtown Gilroy	Bailey Avenue	Aerial	No change	Below	N/A	N/A	New crash wall	San Jose	Santa Clara
Roadway Modification	2	Embankment to Downtown Gilroy	Charter access road	N/A	N/A	N/A	N/A	N/A	Realigned access road to charter school	San Jose	Santa Clara
Road Closure	2	Embankment to Downtown Gilroy	Fox Lane	N/A	N/A	N/A	N/A	Yes	Closure of Fox Lane Intersection with Monterey Highway	San Jose	Santa Clara
Roadway Modification	2	Embankment to Downtown Gilroy	Fox Court	N/A	N/A	N/A	N/A	N/A	New Fox Court north of closed Fox Lane, extends from Dougherty Ave.	San Jose	Santa Clara
New Road Crossing	2	Embankment to Downtown Gilroy	Palm Avenue	At-grade	Aerial	Below	Y	N/A	Grade Separation	San Jose	Santa Clara
New Road Crossing	2	Embankment to Downtown Gilroy	Live Oak Avenue	At-grade	Aerial	Below	Y	N/A	Grade Separation	San Jose	Santa Clara
Road Closure	2	Embankment to Downtown Gilroy	Tilton Avenue	N/A	N/A	N/A	N/A	Yes	Closure of Tilton Avenue Intersection with Monterey Highway, new cul-de-sac	Morgan Hill	Santa Clara
New Road Crossing	2	Embankment to Downtown Gilroy	Madrone Parkway	At-grade	Below grade	Above	Y	N/A	Grade Separation – depressed roadway	Morgan Hill	Santa Clara

Type	Alternative	Design Option	Roadway/Path	Existing Road/Path Grade at Roadway Xing	Proposed Road/Path Profile at HSR	Prop. HSR Grade (Above or Below) at Roadway Xing	Grade Separation	Closure	Modification	City	County
New Road Crossing	2	Embankment to Downtown Gilroy	Monterey Highway, South of Cochrane Road	At-grade	No change	Above	N/A	N/A	N/A	Morgan Hill	Santa Clara
Road Closure	2	Embankment to Downtown Gilroy	N/A	N/A	N/A	N/A	N/A	Yes	E. Central Ave. cul-de-sac relocated east	Morgan Hill	Santa Clara
New Road Crossing	2	Embankment to Downtown Gilroy	East Main Avenue	At-grade	Below grade	Above	Y	N/A	Grade Separation – depressed roadway	Morgan Hill	Santa Clara
Road Closure	2	Embankment to Downtown Gilroy	Depot St.	N/A	N/A	N/A	N/A	Yes	Access from Depot St. to Main Ave. closed due to grade separation	Morgan Hill	Santa Clara
New Bike/Ped. Crossing	2	Embankment to Downtown Gilroy	Morgan Hill Pedestrian Underpass	At-grade	Below grade	Above	N/A	N/A	New pedestrian underpass	Morgan Hill	Santa Clara
Road Closure	2	Embankment to Downtown Gilroy	N/A	N/A	N/A	N/A	N/A	Yes	Diana Ave.cul-de-sac relocated east	Morgan Hill	Santa Clara
New Road Crossing	2	Embankment to Downtown Gilroy	East Dunne Avenue	At-grade	Below grade	Above	Y	N/A	Grade Separation – depressed roadway	Morgan Hill	Santa Clara
New Road Crossing	2	Embankment to Downtown Gilroy	San Pedro Avenue	At-grade	Below grade	Above	Y	N/A	Grade Separation – depressed roadway	Morgan Hill	Santa Clara
Roadway Modification	2	Embankment to Downtown Gilroy	N/A	N/A	N/A	N/A	Y	N/A	Grade Separation - Church St. will be put on a bridge over the newly depressed San Pedro Ave.	Morgan Hill	Santa Clara
Roadway Modification	2	Embankment to Downtown Gilroy	Tennant Avenue	N/A	N/A	N/A	Y	N/A	Grade Separation	Morgan Hill	Santa Clara
Roadway Modification	2	Embankment to Downtown Gilroy	N/A	N/A	N/A	N/A	N/A	N/A	Railroad Ave. roadway modification and realignment between Barrett Ave. and Maple Ave.	Morgan Hill	Santa Clara
Road Closure	2	Embankment to Downtown Gilroy	N/A	N/A	N/A	N/A	N/A	Yes	Caputo Dr. access to Tennant Ave. closed off and converted to cul-de-sac.	Morgan Hill	Santa Clara
New Road Crossing	2	Embankment to Downtown Gilroy	Butterfield Boulevard	Embankment	Aerial	Below	N/A	N/A	Butterfield bridge structure extended over HSR.	Morgan Hill	Santa Clara
New Road Crossing	2	Embankment to Downtown Gilroy	East Middle Avenue	At-grade	Aerial	Below	Y	N/A	Grade Separation and realignment over HSR, UPRR, and Monterey Highway.	San Martin	Santa Clara
Roadway Modification	2	Embankment to Downtown Gilroy	Monterey Road	N/A	N/A	N/A	N/A	N/A	Realignment from East Middle Ave. to San Martin Ave. and new bridge over Llagas Creek	San Martin	Santa Clara
New Road Crossing	2	Embankment to Downtown Gilroy	Oak Street	N/A	N/A	N/A	N/A	Yes	San Martin Ave realigned on former Oak St.	San Martin	Santa Clara
Roadway Modification	2	Embankment to Downtown Gilroy	East San Martin Avenue	N/A	N/A	N/A	Y	N/A	Grade separation and realignment	San Martin	Santa Clara
Road Closure	2	Embankment to Downtown Gilroy	N/A	N/A	N/A	N/A	N/A	Yes	Colony Ave. realignment to connect with	San Martin	Santa Clara
Road Closure	2	Embankment to Downtown Gilroy	N/A	N/A	N/A	N/A	N/A	Yes	Lincoln Ave. converted to cul-de-sac south of realigned San Martin Ave.	San Martin	Santa Clara

Type	Alternative	Design Option	Roadway/Path	Existing Road/Path Grade at Roadway Xing	Proposed Road/Path Profile at HSR	Prop. HSR Grade (Above or Below) at Roadway Xing	Grade Separation	Closure	Modification	City	County
New Bike/Ped. Crossing	2	Embankment to Downtown Gilroy	San Martin Ped. Path	At-grade	Below grade	Above	N/A	N/A	New pedestrian path underneath HSR embankment	San Martin	Santa Clara
New Road Crossing	2	Embankment to Downtown Gilroy	Church Avenue	At-grade	Embankment/Aerial	Below	Y	N/A	Grade Separation	San Martin	Santa Clara
Road Closure	2	Embankment to Downtown Gilroy	N/A	N/A	N/A	N/A	N/A	Yes	Lena Ave. convert to cul-de-sac	San Martin	Santa Clara
New Road Crossing	2	Embankment to Downtown Gilroy	Masten Avenue/Fitzgerald Avenue	At-grade	Below grade	Above	Y	N/A	Grade Separation – depressed roadway and realignment	San Martin	Santa Clara
New Road Crossing	2	Embankment to Downtown Gilroy	Rucker Avenue	At-grade	Below grade	Above	Y	N/A	Grade Separation- depressed roadway	Unincorporated	Santa Clara
Roadway Closure	2	Embankment to Downtown Gilroy	Denio Ave.	N/A	N/A	N/A	N/A	N/A	Cul-de-sac	Unincorporated	Santa Clara
New Road Crossing	2	Embankment to Downtown Gilroy	Buena Vista Avenue	At-grade	Below grade	Above	Y	N/A	Grade Separation- depressed roadway	Unincorporated	Santa Clara
Roadway Modification	2	Embankment to Downtown Gilroy	Radike Ave.	N/A	N/A	N/A	Y	N/A	Realignment to conform with Buena Vista Ave. grade separation.	Unincorporated	Santa Clara
Roadway Modification	2	Embankment to Downtown Gilroy	Monterey Rd. from north of Denio to Day Rd.	N/A	N/A	N/A	Y	N/A	Depressed roadway to conform with Buena Vista Ave. Grade Separation	Unincorporated	Santa Clara
New Road Crossing	2	Embankment to Downtown Gilroy	Cohansey Avenue	At-grade	At-grade	Above	Y	N/A	Grade separation	Gilroy	Santa Clara
New Road Crossing	2	Embankment to Downtown Gilroy	Las Animas Ave.	At-grade	At-grade	Above	Y	N/A	Grade separation	Gilroy	Santa Clara
New Road Crossing	2	Embankment to Downtown Gilroy	Leavesley Road	At-grade	Below grade	Above	Y	N/A	Grade separation	Gilroy	Santa Clara
New Road Crossing	2	Embankment to Downtown Gilroy	Casey Lane	At-grade	Below grade	Above	Y	N/A	Grade separation	Gilroy	Santa Clara
Road Closure	2	Embankment to Downtown Gilroy	Wheeler Street	N/A	N/A	N/A	N/A	Yes	Shortened and converted to cul-de-sac	Gilroy	Santa Clara
New Road Crossing	2	Embankment to Downtown Gilroy	looF Street	At-grade	Below grade	Above	Y	N/A	Grade separation	Gilroy	Santa Clara
New Road Crossing	2	Embankment to Downtown Gilroy	Lewis Street	At-grade	Below grade	Above	N/A	N/A	Shorten and convert to cul-de-sac	Gilroy	Santa Clara
Road Closure	2	Embankment to Downtown Gilroy	Martin Street	N/A	N/A	N/A	N/A	Yes	Shorten and convert to cul-de-sac	Gilroy	Santa Clara
Road Closure	2	Embankment to Downtown Gilroy	Railroad Street	N/A	N/A	N/A	N/A	Yes	Closure of Railroad Street from Lewis to 7th St.	Gilroy	Santa Clara
New Road Crossing	2	Embankment to Downtown Gilroy	East 6th Street	At-grade	Below grade	Above	N/A	N/A	N/A	Gilroy	Santa Clara

Type	Alternative	Design Option	Roadway/Path	Existing Road/Path Grade at Roadway Xing	Proposed Road/Path Profile at HSR	Prop. HSR Grade (Above or Below) at Roadway Xing	Grade Separation	Closure	Modification	City	County
New Road Crossing	2	Embankment to Downtown Gilroy	7th St.	At-grade	Below grade	Above	N/A	N/A	Realignment	Gilroy	Santa Clara
Road Closure	2	Embankment to Downtown Gilroy	Old Gilroy	N/A	N/A	N/A	N/A	Yes	Close Old Gilroy between Alexander and Monterey Rd.	Gilroy	Santa Clara
New Road Crossing	2	Embankment to Downtown Gilroy	East 9th Street	At-grade	Below grade	Above	N/A	N/A	N/A	Gilroy	Santa Clara
New Road Crossing	2	Embankment to Downtown Gilroy	East 10th Street	At-grade	Below grade	Above	N/A	N/A	N/A	Gilroy	Santa Clara
Road Modification	2	Embankment to Downtown Gilroy	Banes Lane	N/A	N/A	N/A	N/A	N/A	Extend for access to new parking and cul-de-sac for access to system site.	Gilroy	Santa Clara
New Road Crossing	2	Embankment to Downtown Gilroy	Luchessa Avenue	At-grade	At-grade	Below	N/A	N/A	N/A	Gilroy	Santa Clara
New Road Crossing	2	Embankment to Downtown Gilroy	US 101 Northbound/ Southbound	Aerial/Embankment	Aerial	Below	N/A	N/A	Bridge reconstruction	Gilroy	Santa Clara
Roadway Modification	1, 3	Viaduct to Downtown Gilroy	Monterey Rd	N/A	N/A	N/A	N/A	N/A	Widen roadway south of Bernal Rod.	San Jose	Santa Clara
Road Closure	1, 3	Viaduct to Downtown Gilroy	Monterey Highway and Roding Way	N/A	N/A	N/A	N/A	Yes	Removal of southbound left turn onto Rodling Way	San Jose	Santa Clara
Bike/Ped. Modification	1, 3	Viaduct to Downtown Gilroy	N/A	N/A	N/A	N/A	N/A	N/A	Realign bike path along Coyote Creek Trail	San Jose	Santa Clara
Roadway Modification	1, 3	Viaduct to Downtown Gilroy	Monterey Rd.	N/A	N/A	N/A	N/A	N/A	Widen roadway, new retaining wall, between Metcalf Rd. to Coyote Ranch Rd.	San Jose	Santa Clara
Roadway Modification	1, 3	Viaduct to Downtown Gilroy	Monterey Rd.	N/A	N/A	N/A	Y	N/A	Widen roadway between Coyote Ranch Rd. and Monterey Road Connector Grade Separation	San Jose	Santa Clara
New Road Crossing	1, 3	Viaduct to Downtown Gilroy	Bailey Avenue	Aerial	No change	Above	N/A	N/A	N/A	San Jose	Santa Clara
Road Closure	1, 3	Viaduct to Downtown Gilroy	N/A	N/A	N/A	Above	N/A	Yes	Closure of a segment of Ogier due to Monterey Rd. Realignment HSR does not cross Ogier.	Unincorporated	Santa Clara
Roadway Modification	1, 3	Viaduct to Downtown Gilroy	Northbound Monterey Road	At-grade	No change	Above	N/A	N/A	Roadway modification and realignment	Unincorporated	Santa Clara
New Road Crossing	1, 3	Viaduct to Downtown Gilroy	Barnhart Avenue	At-grade	No change	Above	N/A	N/A	N/A	Unincorporated	Santa Clara
New Road Crossing	1, 3	Viaduct to Downtown Gilroy	Burnett Avenue	Embankment	No change	Above	N/A	N/A	N/A	Unincorporated	Santa Clara
New Road Crossing	1, 3	Viaduct to Downtown Gilroy	US 101 Southbound Off Ramp tp Cochrane Rd.	At-grade	No change	Above	N/A	N/A	N/A	Morgan Hill	Santa Clara
New Road Crossing	1, 3	Viaduct to Downtown Gilroy	US Loop On-Ramp	At-grade	No change	Above	N/A	N/A	N/A	Morgan Hill	Santa Clara

Type	Alternative	Design Option	Roadway/Path	Existing Road/Path Grade at Roadway Xing	Proposed Road/Path Profile at HSR	Prop. HSR Grade (Above or Below) at Roadway Xing	Grade Separation	Closure	Modification	City	County
New Road Crossing	1, 3	Viaduct to Downtown Gilroy	Cochrane Road	At-grade	No change	Above	N/A	N/A	N/A	Morgan Hill	Santa Clara
New Road Crossing	1, 3	Viaduct to Downtown Gilroy	US 101 Southbound On Ramp from Cochrane Rd.	At-grade	No change	Above	N/A	N/A	N/A	Morgan Hill	Santa Clara
New Road Crossing	1, 3	Viaduct to Downtown Gilroy	East Main Avenue	Embankment	No change	Above	N/A	N/A	N/A	Morgan Hill	Santa Clara
New Road Crossing	1, 3	Viaduct to Downtown Gilroy	US 101 Southbound Off Ramp	At-grade	No change	Above	N/A	N/A	N/A	Morgan Hill	Santa Clara
New Road Crossing	1, 3	Viaduct to Downtown Gilroy	East Dunne Avenue	Embankment	No change	Above	N/A	N/A	N/A	Morgan Hill	Santa Clara
New Road Crossing	1, 3	Viaduct to Downtown Gilroy	US 101 Southbound On Ramp from Dunne Ave.	At-grade	No change	Above	N/A	N/A	N/A	Morgan Hill	Santa Clara
Road Closure	1, 3	Viaduct to Downtown Gilroy	San Pedro Ave.	N/A	N/A	N/A	N/A	Yes	Relocate cul-de-sac to west of HSR.	Morgan Hill	Santa Clara
New Road Crossing	1, 3	Viaduct to Downtown Gilroy	Barrett Avenue	N/A	N/A	Above	N/A	N/A	Cul-de-sac is closed and road connected to St. John Ct.	Morgan Hill	Santa Clara
New Road Crossing	1, 3	Viaduct to Downtown Gilroy	US 101 Southbound Off Ramp from Tennant Ave.	At-grade	N/A	Above	N/A	N/A	N/A	Morgan Hill	Santa Clara
New Road Crossing	1, 3	Viaduct to Downtown Gilroy	Tennant Avenue	Embankment	No change	Above	N/A	N/A	N/A	Unincorporated	Santa Clara
New Road Crossing	1, 3	Viaduct to Downtown Gilroy	US 101 Southbound On Ramp from Tennant Ave.	At-grade	N/A	Above	N/A	N/A	N/A	Unincorporated	Santa Clara
Roadway Modification	1, 3	Viaduct to Downtown Gilroy	Fisher Avenue	N/A	N/A	N/A	N/A	N/A	Close and relocate cul-de-sac to west of HSR. Change to road closure.	Unincorporated	Santa Clara
New Road Crossing	1, 3	Viaduct to Downtown Gilroy	Maple Avenue	At-grade	No change	Above	N/A	N/A	N/A	San Martin	Santa Clara
New Road Crossing	1, 3	Viaduct to Downtown Gilroy	East Middle Avenue	At-grade	No change	Above	N/A	N/A	N/A	San Martin	Santa Clara
New Road Crossing	1, 3	Viaduct to Downtown Gilroy	East San Martin Way	At-grade	No change	Above	N/A	N/A	N/A	San Martin	Santa Clara
Road Closure	1, 3	Viaduct to Downtown Gilroy	South Street	N/A	N/A	N/A	N/A	Yes	Shortening of South Street	San Martin	Santa Clara
New Road Crossing	1	Viaduct to Downtown Gilroy	Church Avenue	At-grade	No change	Above	N/A	N/A	N/A	San Martin	Santa Clara
New Road Crossing	1	Viaduct to Downtown Gilroy	Lena Avenue	At-grade	No change	Above	N/A	N/A	2 crossings of Lena Ave.	San Martin	Santa Clara
New Road Crossing	1	Viaduct to Downtown Gilroy	Masten Avenue	At-grade	No change	Above	N/A	N/A	N/A	San Martin	Santa Clara

Type	Alternative	Design Option	Roadway/Path	Existing Road/Path Grade at Roadway Xing	Proposed Road/Path Profile at HSR	Prop. HSR Grade (Above or Below) at Roadway Xing	Grade Separation	Closure	Modification	City	County
New Road Crossing	1	Viaduct to Downtown Gilroy	Rucker Avenue	At-grade	No change	Above	N/A	N/A	N/A	Unincorporated	Santa Clara
New Road Crossing	1	Viaduct to Downtown Gilroy	Denio Avenue	At-grade	No change	Below	N/A	N/A	N/A	Unincorporated	Santa Clara
New Road Crossing	1	Viaduct to Downtown Gilroy	Buena Vista Avenue	At-grade	No change	Above	N/A	N/A	N/A	Unincorporated	Santa Clara
New Road Crossing	1	Viaduct to Downtown Gilroy	Cohansey Avenue	At-grade	No change	Above	N/A	N/A	N/A	Unincorporated	Santa Clara
New Road Crossing	1	Viaduct to Downtown Gilroy	Las Animas Avenue	At-grade	No change	Above	N/A	N/A	N/A	Gilroy	Santa Clara
New Road Crossing	1	Viaduct to Downtown Gilroy	Leavseley Road	At-grade	No change	Above	N/A	N/A	Widening of Leavesley Road	Gilroy	Santa Clara
New Road Crossing	1	Viaduct to Downtown Gilroy	Casey Lane	At-grade	No change	Above	N/A	N/A	N/A	Gilroy	Santa Clara
New Road Crossing	1	Viaduct to Downtown Gilroy	loof Avenue	At-grade	No change	Above	N/A	N/A	N/A	Gilroy	Santa Clara
Road Closure	1	Viaduct to Downtown Gilroy	Railroad St.	N/A	N/A	N/A	N/A	Yes	N/A	Gilroy	Santa Clara
New Road Crossing	1	Viaduct to Downtown Gilroy	Lewis Street	At-grade	No change	Above	N/A	N/A	N/A	Gilroy	Santa Clara
New Road Crossing	1	Viaduct to Downtown Gilroy	Martin Street	At-grade	No change	Above	N/A	N/A	N/A	Gilroy	Santa Clara
New Road Crossing	1	Viaduct to Downtown Gilroy	East 6th Street	At-grade	No change	Above	N/A	N/A	N/A	Gilroy	Santa Clara
Bike/Ped. Modification	1	Viaduct to Downtown Gilroy	East 7th Street/Old Gilroy St.	At-grade	No change	Above	N/A	N/A	New bike lanes	Gilroy	Santa Clara
New Road Crossing	1	Viaduct to Downtown Gilroy	East 7th Street/Old Gilroy St.	At-grade	No change	Above	N/A	N/A	Realignment	Gilroy	Santa Clara
Bike/Ped. Modification	1	Viaduct to Downtown Gilroy	Alexander St.	N/A	N/A	N/A	N/A	N/A	New bike lanes	Gilroy	Santa Clara
New	1	Viaduct to Downtown Gilroy	East 10th Street	At-grade	No change	Above	N/A	N/A	N/A	Gilroy	Santa Clara
Roadway Modification	1	Viaduct to Downtown Gilroy	Banes Lane	N/A	N/A	N/A	N/A	N/A	Extend for access to new parking and cul-de-sac for access to system site.	Gilroy	Santa Clara
New Road Crossing	1	Viaduct to Downtown Gilroy	East Luchessa Avenue	At-grade	No change	Below	N/A	N/A	N/A	Gilroy	Santa Clara
New Road Crossing	1	Viaduct to Downtown Gilroy	US 101	Embankment	No change	Above	N/A	N/A	N/A	Gilroy	Santa Clara
New Road Crossing	1, 2	Viaduct to Downtown Gilroy	Bloomfield Avenue	At-grade	Embankment/Aerial	Below	Y	N/A	Grade separation, realignment	Unincorporated	Santa Clara

Type	Alternative	Design Option	Roadway/Path	Existing Road/Path Grade at Roadway Xing	Proposed Road/Path Profile at HSR	Prop. HSR Grade (Above or Below) at Roadway Xing	Grade Separation	Closure	Modification	City	County
New Road Crossing	1, 2	Viaduct to Downtown Gilroy	Bolsa Ave.	N/A	N/A	N/A	N/A	N/A	Realignment	Unincorporated	Santa Clara
Road Closure	1, 2	Viaduct to Downtown Gilroy	Sheldon Avenue	N/A	N/A	N/A	N/A	Yes	South side to cul-de-sac; North side abandoned	Unincorporated	Santa Clara
New Road Crossing	1, 2, 4	Viaduct to Downtown Gilroy	Frazier Lake Road	At-grade	No change	Below	N/A	N/A	N/A	Unincorporated	San Benito
New Road Crossing	1, 2, 4	Viaduct to Downtown Gilroy	Lake Road	At-grade	No change	N/A	N/A	N/A	N/A	Unincorporated	San Benito
New Road Crossing	1,2,4	Viaduct to Downtown Gilroy	Lover's Lane	At-grade	No change	Above	N/A	N/A	N/A	Unincorporated	San Benito
New Road Crossing	1, 2, 4	Viaduct to Downtown Gilroy	San Felipe Road	At-grade	No change	Above	N/A	N/A	N/A	Unincorporated	Santa Clara
New Road Crossing	1, 2, 4	Viaduct to Downtown Gilroy	SR 152/Pacheco Pass Highway	At-grade	No change	Above	N/A	N/A	N/A	Unincorporated	Santa Clara
New Road Crossing	1, 2, 4	Viaduct to Downtown Gilroy	SR 152/Pacheco Pass Highway	At-grade	No change	Above	N/A	N/A	N/A	Unincorporated	Santa Clara
New Road Crossing	3	Viaduct to East Gilroy	Church Avenue	At-grade	No change	Above	N/A	N/A	N/A	San Martin	Santa Clara
New Road Crossing	3	Viaduct to East Gilroy	Shean Court	At-grade	No change	Above	N/A	N/A	N/A	San Martin	Santa Clara
New Road Crossing	3	Viaduct to East Gilroy	Lena Avenue	At-grade	No change	Above	N/A	N/A	N/A	San Martin	Santa Clara
New Road Crossing	3	Viaduct to East Gilroy	Masten Avenue	At-grade	No change	Above	N/A	N/A	N/A	San Martin	Santa Clara
Roadway Modification	3	Viaduct to East Gilroy	6th St.	N/A	N/A	N/A	N/A	N/A	Realignment	San Martin	Santa Clara
New Road Crossing	3	Viaduct to East Gilroy	US 101	At-grade	No change	Above	N/A	N/A	N/A	Unincorporated	Santa Clara
New Road Crossing	3	Viaduct to East Gilroy	Uno Road	At-grade	No change	Above	N/A	N/A	N/A	Unincorporated	Santa Clara
New Road Crossing	3	Viaduct to East Gilroy	Denio Avenue	At-grade	No change	Above	N/A	N/A	N/A	Unincorporated	Santa Clara
New Road Crossing	3	Viaduct to East Gilroy	Buena Vista Avenue	At-grade	No change	Above	N/A	N/A	N/A	Unincorporated	Santa Clara
Roadway Closure	3	Viaduct to East Gilroy	Cohansey Avenue	N/A	N/A	N/A	N/A	Yes	Road closure of Cohansey Avenue, converted to cul-de-sac on each side of HSR.	Unincorporated	Santa Clara
New Road Crossing	3	Viaduct to East Gilroy	Las Animas Avenue	At-grade	Aerial	Below	Y	N/A	Grade separation	Unincorporated	Santa Clara

Type	Alternative	Design Option	Roadway/Path	Existing Road/Path Grade at Roadway Xing	Proposed Road/Path Profile at HSR	Prop. HSR Grade (Above or Below) at Roadway Xing	Grade Separation	Closure	Modification	City	County
New Road Crossing	3	Viaduct to East Gilroy	Leavesley Road	At-grade	Aerial	Below	N/A	N/A	Roadway modification and widening to 2 lanes in each direction	Gilroy	Santa Clara
Roadway Modification	3	Viaduct to East Gilroy	New	N/A	N/A	N/A	N/A	N/A	New road north and parallel to Leavesley connecting the station to Marcella Ave.	Gilroy/Unincorporated	Santa Clara
Roadway Modification	3	Viaduct to East Gilroy	New	N/A	N/A	N/A	N/A	N/A	New road north and parallel to Leavesley to the west of HSR.	Gilroy/Unincorporated	Santa Clara
Roadway Modification	3	Viaduct to East Gilroy	New	N/A	N/A	N/A	N/A	N/A	New road parallel to Marcella Ave., connecting Leavesley to Las Animas, adjacent to the Gilroy outlets	Gilroy/Unincorporated	Santa Clara
New Road Crossing	3	Viaduct to East Gilroy	Gilman Avenue	N/A	N/A	Below	Y	N/A	Grade Separation – and realigned	Unincorporated	Santa Clara
Roadway Closure	3	Viaduct to East Gilroy	Holsclaw Road	N/A	N/A	N/a	N/A	Yes	Road closure of Holsclaw Road, cul-de-sac on both sides of HSR	Unincorporated	Santa Clara
New Road Crossing	3	Viaduct to East Gilroy	SR 152	N/A	N/A	Below	Y	N/A	Grade separation and realignment	Unincorporated	Santa Clara
Roadway Closure	3	Viaduct to East Gilroy	N/A	N/A	N/A	N/A	N/A	Yes	Road closure	Unincorporated	Santa Clara
Roadway Modification	3	Viaduct to East Gilroy	Frazier Lake Road	N/A	N/A	N/A	Y	N/A	Grade separation and realignment to connect to SR 152 grade separation	Unincorporated	Santa Clara
Roadway Closure	3	Viaduct to East Gilroy	Holsclaw Road	N/A	N/A	N/a	N/A	Yes	Realignment to connect with SR 152 grade separation	Unincorporated	Santa Clara
Roadway Modification	3	Viaduct to East Gilroy	New	N/A	N/A	N/a	N/A	N/a	West of 152, provides property access and access to HSR systems sites	Unincorporated	Santa Clara
New Road Crossing	3	Viaduct to East Gilroy	Bloomfield Avenue	At-grade	No change	Above	N/A	N/A	N/A	Unincorporated	Santa Clara
New Road Crossing	3	Viaduct to East Gilroy	Lake Road	At-grade	No change	Above	N/A	N/A	N/A	Unincorporated	San Benito
New Road Crossing	3	Viaduct to East Gilroy	Lover's Lane	At-grade	No change	Above	N/A	N/A	N/A	Unincorporated	San Benito
New Road Crossing	3	Viaduct to East Gilroy	San Felipe Road	At-grade	No change	Above	N/A	N/A	N/A	Unincorporated	Santa Clara
New Road Crossing	3	Viaduct to East Gilroy	SR 152/Pacheco Pass Highway	At-grade	No change	Above	N/A	N/A	N/A	Unincorporated	Santa Clara
New Road Crossing	3	Viaduct to East Gilroy	SR 156/Pacheco Pass Highway	At-grade	No change	Above	N/A	N/A	N/A	Unincorporated	Santa Clara
Existing	4	Blended, At Grade to Downtown Gilroy	Blanchard Road	At-grade	No change	At-grade	N/A	Yes	Quad gates	San Jose	Santa Clara
Roadway Closure	4	Blended, At Grade to Downtown Gilroy	Emado Avenue	N/A	N/A	N/A	N/A	Yes	Closure of Emado Avenue Intersection with Monterey Highway	San Jose	Santa Clara

Type	Alternative	Design Option	Roadway/Path	Existing Road/Path Grade at Roadway Xing	Proposed Road/Path Profile at HSR	Prop. HSR Grade (Above or Below) at Roadway Xing	Grade Separation	Closure	Modification	City	County
Existing	4	Blended, At Grade to Downtown Gilroy	Bailey Avenue	Aerial	No change	Below	N/A	N/A	New crash wall	San Jose	Santa Clara
Roadway Modification	4	Blended, At Grade to Downtown Gilroy	Richmond Ave.	N/A	N/A	N/A	N/A	N/A	New cul-de-sac, widen road by adding shoulders.	Unincorporated	Santa Clara
Roadway Closure	4	Blended, At Grade to Downtown Gilroy	Fox Lane	N/A	N/A	N/A	N/A	Yes	Closure of Fox Lane Intersection with Monterey Highway	Unincorporated	Santa Clara
Roadway Modification	4	Blended, At Grade to Downtown Gilroy	Fox Court	N/A	N/A	N/A	N/A	N/A	New Fox Court north of closed Fox Lane, extends from Dougherty Ave.	Unincorporated	Santa Clara
Existing	4	Blended, At Grade to Downtown Gilroy	Palm Avenue	At-grade	No change	At-grade	N/A	N/A	Quad gates	Unincorporated	Santa Clara
Existing	4	Blended, At Grade to Downtown Gilroy	Live Oak Avenue	At-grade	No change	At-grade	N/A	N/A	Quad gates	Unincorporated	Santa Clara
Existing	4	Blended, At Grade to Downtown Gilroy	Tilton Avenue	At-grade	No change	At-grade	N/A	N/A	Quad gates	Morgan Hill	Santa Clara
Existing	4	Blended, At Grade to Downtown Gilroy	Monterey Highway, South of Cochrane Road	At-grade	No change	Above	N/A	N/A	Replace rail bridge over Monterey Rd.	Morgan Hill	Santa Clara
Existing	4	Blended, At Grade to Downtown Gilroy	Main Avenue	At-grade	No change	At-grade	N/A	N/A	Quad gates	Morgan Hill	Santa Clara
New Bike/Ped. Crossing	4	Blended, At Grade to Downtown Gilroy	Morgan Hill Pedestrian Underpass	At-grade	Below grade	Above	N/A	N/A	New pedestrian underpass	Morgan Hill	Santa Clara
Roadway Modification	4	Blended, At Grade to Downtown Gilroy	Diana Ave.	N/A	N/A	N/A	N/A	N/A	Diana Ave.cul-de-sac realignment	Morgan Hill	Santa Clara
Existing	4	Blended, At Grade to Downtown Gilroy	East Dunne Avenue	At-grade	No change	At-grade	N/A	N/A	Quad gates	Morgan Hill	Santa Clara
Existing	4	Blended, At Grade to Downtown Gilroy	San Pedro Avenue	At-grade	No change	At-grade	N/A	N/A	Quad gates	Morgan Hill	Santa Clara
Existing	4	Blended, At Grade to Downtown Gilroy	Tennant Avenue	At-grade	No change	At-grade	N/A	N/A	Quad gates	San Martin	Santa Clara
Existing	4	Blended, At Grade to Downtown Gilroy	Butterfield Boulevard	Aerial	No change	Below	N/A	N/A	N/A	Morgan Hill/San Martin	Santa Clara
Existing	4	Blended, At Grade to Downtown Gilroy	East Middle Avenue	At-grade	No change	At-grade	N/A	N/A	Quad gates	Morgan Hill	Santa Clara
New Bike/Ped. Crossing	4	Blended, At Grade to Downtown Gilroy	San Martin Caltrain Station Pedestrian Overpass	N/A	Aerial	Below	N/A	N/A	N/A	San Martin	Santa Clara
Existing	4	Blended, At Grade to Downtown Gilroy	East San Martin Avenue	At-grade	No change	At-grade	N/A	N/A	Quad gates	San Martin	Santa Clara
Existing	4	Blended, At Grade to Downtown Gilroy	Church Avenue	At-grade	No change	At-grade	N/A	N/A	Quad gates	San Martin	Santa Clara

Type	Alternative	Design Option	Roadway/Path	Existing Road/Path Grade at Roadway Xing	Proposed Road/Path Profile at HSR	Prop. HSR Grade (Above or Below) at Roadway Xing	Grade Separation	Closure	Modification	City	County
Existing	4	Blended, At Grade to Downtown Gilroy	Masten Avenue	At-grade	No change	At-grade	N/A	N/A	Quad gates	San Martin	Santa Clara
Existing	4	Blended, At Grade to Downtown Gilroy	Rucker Avenue	At-grade	No change	At-grade	N/A	N/A	Quad gates	Unincorporated	Santa Clara
Existing	4	Blended, At Grade to Downtown Gilroy	Buena Vista Avenue	At-grade	No change	At-grade	N/A	N/A	Quad gates	Unincorporated	Santa Clara
Existing	4	Blended, At Grade to Downtown Gilroy	Cohansey Avenue	At-grade	No change	At-grade	N/A	N/A	Quad gates	Gilroy	Santa Clara
Existing	4	Blended, At Grade to Downtown Gilroy	Las Animas Ave.	At-grade	No change	At-grade	N/A	N/A	Quad gates	Gilroy	Santa Clara
Existing	4	Blended, At Grade to Downtown Gilroy	Leavesley Road	At-grade	No change	At-grade	N/A	N/A	Quad gates	Gilroy	Santa Clara
Bike/Ped. Modification	4	Blended, At Grade to Downtown Gilroy	Casey Lane	N/A	N/A	N/A	N/A	Yes	Remove pedestrian crossing	Gilroy	Santa Clara
Existing	4	Blended, At Grade to Downtown Gilroy	looF Street	At-grade	No change	At-grade	N/A	N/A	Quad gates	Gilroy	Santa Clara
Existing	4	Blended, At Grade to Downtown Gilroy	Lewis Street	At-grade	No change	At-grade	N/A	N/A	Quad gates	Gilroy	Santa Clara
Existing	4	Blended, At Grade to Downtown Gilroy	Martin Street	At-grade	No change	At-grade	N/A	N/A	Quad gates	Gilroy	Santa Clara
Existing	4	Blended, At Grade to Downtown Gilroy	East 6th Street	At-grade	No change	At-grade	N/A	N/A	Quad gates	Gilroy	Santa Clara
Road Modification	4	Blended, At Grade to Downtown Gilroy	7th St.	N/A	N/A	N/A	N/A	Yes	Road closed	Gilroy	Santa Clara
Road Modification	4	Blended, At Grade to Downtown Gilroy	Old Gilroy	N/A	N/A	N/A	N/A	Yes	Road closed	Gilroy	Santa Clara
Existing	4	Blended, At Grade to Downtown Gilroy	East 10th Street	At-grade	No change	At-grade	N/A	N/A	Quad gates	Gilroy	Santa Clara
Road Modification	4	Blended, At Grade to Downtown Gilroy	Banes Lane	N/A	N/A	N/A	N/A	N/A	Extend Banes Lane to AutoMall Parkway/Chestnut St.	Gilroy	Santa Clara
Existing	4	Blended, At Grade to Downtown Gilroy	Luchessa Avenue	At-grade	No change	At-grade	N/A	N/A	Quad gates	Gilroy	Santa Clara
Existing	4	Blended, At Grade to Downtown Gilroy	US 101 Northbound/ Southbound	Aerial	Aerial	Below	N/A	N/A	New crash walls	Gilroy	Santa Clara
Road Modification	4	Blended, At Grade to Downtown Gilroy	Carnadero Ave.	N/A	N/A	N/A	N/A	Yes	Road closure	Gilroy	Santa Clara
New Road Crossing	4	Blended, At Grade to Downtown Gilroy	Bloomfield Avenue	At-grade	No change	Aerial	N/A	N/A	MT2 and MT3 on aerial structure	Unincorporated	Santa Clara

Type	Alternative	Design Option	Roadway/Path	Existing Road/Path Grade at Roadway Xing	Proposed Road/Path Profile at HSR	Prop. HSR Grade (Above or Below) at Roadway Xing	Grade Separation	Closure	Modification	City	County
New Road Crossing	4	Blended, At Grade to Downtown Gilroy	Bloomfield Avenue	At-grade	No change	At-grade	N/A	N/A	Quad gates for UPRR Hollister and HSR MOWF Access tracks crossing of Bloomfield	Unincorporated	Santa Clara
Pacheco Pass											
Road Modification	1, 2, 3, 4	North Pacheco Pass	SR 152/Pacheco Pass Highway	N/A	N/A	N/A	N/A	N/A	Road widening, additional turn out and transition lane on westbound CA-152, additional left turn lane and transition lane on eastbound CA-152. Additional lanes provide cueing space for vehicles going from CA-152 to TPSWS site.	Unincorporated	Santa Clara
Road Modification	1, 2, 3, 4	North Pacheco Pass	SR 152/Pacheco Pass Highway	N/A	N/A	N/A	N/A	N/A	Turn and transition lanes extended. Additional cueing space for vehicles going from CA-152 to the Tunnel 2 west portal access road.	Unincorporated	Santa Clara
New Road Crossing	1, 2, 3, 4	North Pacheco Pass	SR 152/Pacheco Pass Highway	At-grade	No change	Below	N/A	N/A	HSR in tunnel under SR 152 ~3250+00	Unincorporated	Santa Clara
New Road Crossing	1, 2, 3, 4	North Pacheco Pass	SR 152/Pacheco Pass Highway	At-grade	No change	Below	N/A	N/A	HSR in tunnel under SR 152 ~3545+00	Unincorporated	Santa Clara
New Road Crossing	1, 2, 3, 4	North Pacheco Pass	SR 152/Pacheco Pass Highway	At-grade	No change	Below	N/A	N/A	HSR in tunnel under SR 152 ~3660+00	Unincorporated	Santa Clara
New Road Crossing	1, 2, 3, 4	North Pacheco Pass	McCabe Road	At-grade	No change	Above	N/A	N/A	N/A	Unincorporated	Merced
New Road Crossing	1, 2, 3, 4	North Pacheco Pass	Whitworth Road	Aerial	No change	Above	N/A	N/A	N/A	Unincorporated	Merced
Road Modification	1, 2, 3, 4	North Pacheco Pass	Romero Rd N	N/A	N/A	N/A	N/A	N/A	Realignment	Unincorporated	Merced
New Road Crossing	1, 2, 3, 4	North Pacheco Pass	I-5	At-grade	No change	Above	N/A	N/A	N/A	Unincorporated	Merced
San Joaquin Valley											
New Road Crossing	1, 2, 3, 4	Henry Miller Road	Santa Nella Rd/SR 33	At-grade	No change	Above	N/A	N/A	N/A	Unincorporated	Merced
New Road Crossing	1, 2, 3, 4	Henry Miller Road	Fahey Road	At-grade	No change	Above	N/A	N/A	Realignment	Unincorporated	Merced
New Road Crossing	1, 2, 3, 4	Henry Miller Road	Cherokee Road	At-grade	No change	Above	N/A	N/A	N/A	Unincorporated	Merced
New Road Crossing	1, 2, 3, 4	Henry Miller Road	Ingomar Grade Road	At-grade	No change	Above	N/A	N/A	N/A	Volta	Merced
Road Closure	1, 2, 3, 4	Henry Miller Road	Volta Rd.	N/A	N/A	N/A	N/A	Yes	Road closure	Volta	Merced
New Road Crossing	1, 2, 3, 4	Henry Miller Road	Henry Miller Road	At-grade	Embankment/Aerial	Below	Y	N/A	Grade Separation	Volta	Merced
New Road Crossing	1, 2, 3, 4	Henry Miller Road	Badger Flat Road	At-grade	No change	Above	N/A	N/A	N/A	Unincorporated	Merced
Road Modification	1, 2, 3, 4	Henry Miller Road	New	N/A	N/A	N/A	N/A	N/A	New road from Badger Flat Rd. to Nantes Ave. along south of HSR.	Unincorporated	Merced
Road Closure	1, 2, 3, 4	Henry Miller Road	Johnson Road	N/A	N/A	N/A	N/A	Yes	Road closure of Johnson Road	Unincorporated	Merced

Type	Alternative	Design Option	Roadway/Path	Existing Road/Path Grade at Roadway Xing	Proposed Road/Path Profile at HSR	Prop. HSR Grade (Above or Below) at Roadway Xing	Grade Separation	Closure	Modification	City	County
Road Closure	1, 2, 3, 4	Henry Miller Road	Nantes Avenue	N/A	N/A	N/A	N/A	Yes	Road closure of Nantes Avenue	Unincorporated	Merced
New Road Crossing	1, 2, 3, 4	Henry Miller Road	SR 165/Mercey Spring Road (proposed)	At-grade	Embankment/Aerial	Below	Y	N/A	Grade Separation	Unincorporated	Merced
Road Closure	1, 2, 3, 4	Henry Miller Road	Santa Fe Grade	N/A	N/A	N/A	N/A	Yes	Road closure of Santa Fe Grade	Unincorporated	Merced
Road Closure	1, 2, 3, 4	Henry Miller Road	Baker Road	N/A	N/A	N/A	N/A	Yes	Road closure of Baker Road	Unincorporated	Merced
New Road Crossing	1, 2, 3, 4	Henry Miller Road	Delta Road	At-grade	Embankment/Aerial	Below	N/A	N/A	Grade Separation	Unincorporated	Merced
Road Closure	1, 2, 3, 4	Henry Miller Road	Midway Road	N/A	N/A	N/A	N/A	Yes	Cul-de-sac	Unincorporated	Merced
Road Closure	1, 2, 3, 4	Henry Miller Road	Box Car Road	N/A	N/A	N/A	N/A	Yes	Road closure	Unincorporated	Merced
New Road Crossing	1, 2, 3, 4	Henry Miller Road	Turner Island Road (proposed)	At-grade	Embankment/Aerial	Below	N/A	N/A	Grade Separation	Unincorporated	Merced
Road Closure	1, 2, 3, 4	Henry Miller Road	Hutchins Road	N/A	N/A	N/A	N/A	Yes	Road closure of Hutchins Road	Unincorporated	Merced
New Road Crossing	1, 2, 3, 4	Henry Miller Road	Carlucci Road (proposed)	At-grade	Embankment/Aerial	Below		N/A	Grade Separation	Unincorporated	Merced

Source: Authority 2019a
 No. = Number
 Xing = crossing
 HSR = high-speed rail
 Prop. = Proposed
 Blvd = Boulevard
 I = Interstate
 SR = State Route
 N/A = Not Applicable

This Page Intentionally Left Blank

Table 2 Local Roadway Modifications Required for HSR

Roadway	Classification	Description of Change	Alternative			
			1	2	3	4
San Jose to Diridon Station Approach						
Grant St	Other roadway modification	Road shortened		X	X	
De la Cruz Blvd	Grade separation	Changes from overcrossing to undercrossing		X	X	
West Hedding St	Other roadway change	Rebuilds existing overcrossing	X			
West Hedding St	Grade separation	Changes from overcrossing to undercrossing		X	X	
University Ave	Road closure	Converted to a cul-de-sac	X	X	X	
Emory St	Road closure	Converted to a cul-de-sac	X	X	X	
Stockton Ave	Road closure	Converted to a cul-de-sac	X	X	X	
Chestnut St	Alignment change/road closure	Realigned/closed from Ashbury St to W Taylor St	X			
Chestnut St	Alignment change	Realigned		X	X	
W Taylor St	Grade separation	New HSR undercrossing (Caltrain railroad bridge over Taylor is maintained)	X			
W Taylor St	Grade separation	New HSR overcrossing alongside existing Caltrain overcrossing				X
W Taylor St	Alignment change	Realign westbound Taylor St to northbound Chestnut St		X	X	
North Montgomery St	Other roadway change	Extended to maintain property access	X	X	X	
Stover St	Other roadway change	Extend Stover St from S Montgomery St to Autumn St	X	X	X	
Crandall St	Other roadway change	Extend from S Montgomery St to Autumn St	X	X	X	
Cahill St	Other roadway change	Extension to Park Ave and lane conversion to transit only lanes	X	X	X	
SR-87 On-Ramp	Alignment change	Ramp realignment	X	X	X	
Auzerais Ave	4-quadrant gate	2 vehicular arm gates, channelizers, 4 pedestrian arm gates and exit swing gates				X
W Virginia St	4-quadrant gate	2 vehicular arm gates, channelizers, 4 pedestrian arm gates and exit swing gates				X
Fuller Ave	Alignment change	Realignment of Fuller Ave dead end				X
Monterey Corridor						
Almaden Expwy	Alignment change	Realign on-ramp to SR 87	X		X	

Roadway	Classification	Description of Change	Alternative			
			1	2	3	4
Monterey Rd from Southside Dr to between Blossom Hill Rd and Ford Rd	Lane narrowing	Narrowed to four lanes	X		X	
Monterey Rd between Fehren Dr and Blossom Hill Rd	Lane narrowing	Narrowed from six to four lanes		X		
Southbound Monterey Rd	Other roadway change/Alignment change	Road widening for bus turnout, road realignment	X		X	
Monterey Rd between Senter Rd and Skway Dr	Other roadway change	Closure of midblock southbound left turn into shopping center between Senter Rd and Skyway Dr	X	X	X	
Skyway Dr	Grade separation	Skyway Dr depressed and realigned with ramp return to Monterey Rd at grade (Variant A); Monterey Rd depressed (Variant B)		X		
Skyway Dr	4-quadrant gate	4 vehicular arm gates, 50-ft raised median, 4 pedestrian arm gates and exit swing gates, 2 pedestrian barriers				X
Branham Ln	Grade separation	Intersection reconfigured, Monterey Rd depressed, some turn lanes removed		X		
Branham Ln	4-quadrant gate	4 vehicular arm gates, 50-ft raised median, 4 pedestrian arm gates and exit swing gates, 2 pedestrian barriers				X
Rice Way	Road Closure	Access from Rice Wy to Monterey Rd closed		X		
Waterfall Ct	Other roadway change	Extend Waterfall Ct to Broken Lance Ct		X		
Waterfall Ct	Road closure	Close access from Waterfall Ct to Cynoweth		X		
Chynoweth Ave	Grade separation	Roadway reconfigured, some turn lanes removed		X		
Chynoweth Ave	4-quadrant gate	3 vehicular arm gates, 50-ft raised median, 4 pedestrian arm gates and exit swing gates, 1 pedestrian barrier				X
Monterey Rd	Other roadway change	Closure of midblock southbound left turn into shopping center between Chynoweth Ave and Blossom Hill Rd	X	X	X	
Blossom Hill Rd SB Ramp from Monterey Rd to Blossom Hill	Other roadway change	Ramps reconfigured: SB on-ramp moved to other side of Monterey, accessed via SBL pocket		X		
Flintwell Way	Road widening	Widen Monterey Rd at Flintwell Wy	X		X	
Monterey Rd	Other roadway change	Closure of midblock southbound left turn into shopping center at Hicks Ln	X		X	

Roadway	Classification	Description of Change	Alternative			
			1	2	3	4
Bernal Rd	Road Widening	Widening of on-/off-ramps to Monterey Rd	X		X	
Great Oaks Pkwy	Alignment change	Realignment of Great Oaks Pkwy				X
Morgan Hill and Gilroy						
Monterey Rd	Other roadway change	Removal of southbound midblock left turn into Roding Wy	X		X	
Monterey Rd	Road widening	Widening from Metcalf Rd to Coyote Ranch Rd	X		X	
Blanchard Rd	Road closure	Road closure		X		
Blanchard Rd	Other roadway change	Extension of Blanchard Rd to new Emado Ave extension		X		
Blanchard Rd	4-quadrant gate	2 vehicular arm gates, channelizers, 4 pedestrian arm gates and exit swing gates.				X
Monterey Rd	Alignment change	Realignment from Blanchard Rd to Cochrane Rd		X		
Emado Ave	Road closure	Closure of Emado Ave intersection with Monterey Rd		X		X
Emado Ave	Other roadway change	Extension of Emado Ave to Santa Teresa Blvd		X		
Charter Access Rd	Alignment change	Realigned access road to charter school		X		
Richmond Ave	Road closure	New cul-de-sac, widen road by adding shoulders				X
Fox Ct	Other roadway change	New Fox Ct north of closed Fox Ln, extends from Dougherty Ave		X		X
Fox Ln	Road closure	Road closure		X		X
Palm Ave	Other roadway change	Removal of designated left turn from southbound Monterey Rd	X			
Palm Ave	Grade separation	Palm Ave depressed and realigned to access Monterey Rd from opposite side of roadway		X		
Palm Ave	4-quadrant gate	2-4 vehicular arm gates, channelizers, 50-ft raised median, 4 pedestrian arm gates and exit swing gates				X
Monterey Rd near Ogier	Alignment change	Realigned with dogleg	X			
Ogier Ave	Road closure	Partial closure due to realignment of Monterey Rd	X		X	
Live Oak Ave	Grade separation	Live Oak Ave realigned to access Monterey Rd from opposite side of roadway		X		

Roadway	Classification	Description of Change	Alternative			
			1	2	3	4
Live Oak Ave	4-quadrant gate	2-4 vehicular arm gates, channelizers, 50-ft raised median, 4 pedestrian arm gates and exit swing gates, traffic signals where none exist				X
Tilton Ave	Road closure	Road closure		X		
Tilton Ave	4-quadrant gate	2-4 vehicular arm gates, channelizers, 50-ft raised median, 4 pedestrian arm gates and exit swing gates, traffic signals where none exist				X
Madrone Pkwy	Grade separation	Madrone Pkwy realigned to access Monterey Rd from opposite side of roadway; roadway extended to new intersection at Hale Ave		X		
Monterey Rd	Alignment change	Monterey Road realigned		X		
East Central Ave	Road closure	East Central Avenue cul-de-sac relocated east		x		
East Main Ave	Grade separation	Road widening and modifications. No changes to access to Monterey Rd		X		
East Main Ave	4-quadrant gate	2 vehicular arm gates, channelizers, 4 pedestrian arm gates and exit swing gates				X
Depot St	Road closure	Access from Depot St to Main Ave closed due to grade separation		X		
Diana Ave	Road closure	Diana Ave cul-de-sac relocated east		X		X
East Dunne Ave	Grade separation	Road widening and modifications. No changes to access to Monterey Rd		X		
East Dunne Ave	4-quadrant gate	2 vehicular arm gates, channelizers, 4 pedestrian arm gates and exit swing gates				X
San Pedro Ave	Grade separation	San Pedro Ave rebuilt. No changes to access on Monterey Rd		X		
San Pedro Ave	Road closure	Relocate cul-de-sac to west of HSR.	X		X	
San Pedro Ave	4-quadrant gate	2 vehicular arm gates, channelizers, 4 pedestrian arm gates and exit swing gates				X
Church St	Grade separation	Church Ave realigned to access Monterey Rd from opposite side of roadway		X		

Roadway	Classification	Description of Change	Alternative			
			1	2	3	4
Railroad Ave	Alignment change	Railroad Ave roadway modification and realignment between Barrett Ave and Maple Ave		X		
Barrett Ave	Alignment change	Access realigned to St. John Ct	X		X	
Tennant Ave	Grade separation	New Underpass along Tennant. Roadway realigned, new frontage road replaces Railroad Ave and provides access to Barrett Ave and Maple Ave		X		
Tennant Ave	4-quadrant gate	2 vehicular arm gates, channelizers, 4 pedestrian arm gates and exit swing gates				X
Fisher Ave	Road closure	Close and relocate cul-de-sac to west of HSR.	X		X	
Caputo Dr	Road closure	Caputo Dr. access to Tennant Ave. closed off and converted to cul-de-sac.		X		
East Middle Ave	Grade separation	Realigned grade separation		X		
East Middle Ave	4-quadrant gate	2 vehicular arm gates, channelizers, 4 pedestrian arm gates and exit swing gates				X
Monterey Rd	Alignment change	Realignment from East Middle Ave to San Martin Ave and new bridge over Llagas Creek		X		
Colony Ave	Alignment change	Colony Ave to connect with San Martin Ave		X		
Oak St	Other roadway change	San Martin Ave realigned on former Oak St		X		
E San Martin St	Grade separation	New Underpass. Road realigned and rebuilt; access to Monterey Rd converted to T intersection and shifted to west side of roadway; new access onto E San Martin from Colony Ave and Llagas Ave		X		
E San Martin St	4-quadrant gate	4 vehicular arm gates, 50-ft raised median, 4 pedestrian arm gates and exit swing gates				X
Lincoln Ave	Road closure	Lincoln Ave converted to cul-de-sac south of realigned San Martin Ave		X		
South St	Other roadway change	Shortening of South St	X		X	
Church Ave	4-quadrant gate	2-4 vehicular arm gates, channelizers, 50-ft raised median, 4 pedestrian arm gates and exit swing gates, traffic signals where none exist				X
Lena Ave	Road closure	Lena Ave converted to a cul-de-sac		X		

Roadway	Classification	Description of Change	Alternative			
			1	2	3	4
Masten Ave/Fitzgerald Ave	Grade separation	Monterey Rd depressed. Masten Ave and Fitzgerald Ave realigned to access Monterey Rd.		X		
Masten Ave	4-quadrant gate	2-4 vehicular arm gates, channelizers, 50-ft raised median, 4 pedestrian arm gates and exit swing gates				X
Rucker Ave	Grade separation	Rucker Ave realigned to access Monterey Rd from opposite side of roadway		X		
Rucker Ave	4-quadrant gate	2-4 vehicular arm gates, channelizers, 50-ft raised median, 4 pedestrian arm gates and exit swing gates, traffic signals where none exist				X
Monterey Hwy	Other roadway change	Depressed roadway to conform with Buena Vista Ave grade separation		X		
Denio Ave	Road closure	Denio Ave converted to cul-de-sac		X		
Buena Vista Ave	Grade separation	New Underpass. Road is realigned and widened. T intersection with realigned Monterey Road on west side of existing road.		X		
Buena Vista Ave	4-quadrant gate	2-4 vehicular arm gates, channelizers, 50-ft raised median, 4 pedestrian arm gates and exit swing gates, traffic signals where none exist				X
Cohansey Ave	Grade Separation	New underpass		X		
Cohansey Ave	Road closure	Road closure			X	
Cohansey Ave	4-quadrant gate	2-4 vehicular arm gates, channelizers, 50-ft raised median, 4 pedestrian arm gates and exit swing gates, traffic signals where none exist				X
Las Animas Ave	Grade separation	Realigned to merge with Cohansey Ave		X	X	
Las Animas Ave	4-quadrant gate	2-4 vehicular arm gates, channelizers, 50-ft raised median, 4 pedestrian arm gates and exit swing gates.				X
Marcella Ave	Other roadway change	New road north and parallel to Leavesley connecting the station to Marcella Ave			X	
New road north of Leavesley Road	Other roadway change	New road north and parallel to Leavesley west of HSR			X	
New road parallel to Marcella Ave	Other roadway change	New road parallel to Marcella Ave., connecting Leavesley to Las Animas, adjacent to Gilroy outlets			X	
Leavesley Rd	Grade separation	New underpass		X		

Roadway	Classification	Description of Change	Alternative			
			1	2	3	4
Leavesley Rd	Road widening	Widening of Leavesley Road	X		X	
Leavesley Rd	4-quadrant gate	2-4 vehicular arm gates, channelizers, 50-ft raised median, 4 pedestrian arm gates and exit swing gates				X
Casey St	Grade separation	New underpass		X		
Casey Ln	Closed	Pedestrian crossing closure				X
Wheeler St	Road closure	Shortened and converted to cul-de-sac		X		
IOOF St	Grade separation	New underpass, demolish existing bridge		X		
IOOF St	4-quadrant gate	2 vehicular arm gates, channelizers, 4 pedestrian arm gates and exit swing gates				X
Lewis St	Grade separation	New Underpass		X		
Lewis St	4-quadrant gate	2 vehicular arm gates, channelizers, 4 pedestrian arm gates and exit swing gates				X
Martin St	Road closure	Shortened and converted to cul-de-sac		X		
Martin St	4-quadrant gate	2 vehicular arm gates, channelizers, 4 pedestrian arm gates and exit swing gates				X
Railroad St	Road closure	Road closure from Lewis St to 7th St	X	X		
E 6th St	Grade separation	New Underpass		X		
E 6th St	4-quadrant gate	2 vehicular arm gates, channelizers, 4 pedestrian arm gates and exit swing gates				X
Old Gilroy St	Road closure	Road closure between Alexander St and Monterey Rd	X			X
E 6th St	Alignment change	Realignment		X		
Gilman Rd	Grade separation	Gilman Rd rebuilt over HSR tracks			X	
East 7th St/Old Gilroy St	Alignment change	Realignment	X			
Old Gilroy St	Road closure	Road closed, new pedestrian overcrossing				X
E 7th St	Alignment change	Realigned and extended to Alexander St		X		
E 7th St	Road Closure	Road closed, new pedestrian overcrossing				X
Holsclaw Rd	Road closure	Road closure of Holsclaw Road, cul-de-sac on both sides of HSR			X	

Roadway	Classification	Description of Change	Alternative			
			1	2	3	4
Holsclaw Rd	Alignment change	Realignment to connect with SR 152 grade separation			X	
E 9th St	Grade separation	New Underpass. Extend road to connect from Alexander street to Monterey Road		X		
E 10th St	Grade separation	New underpass		X		
E 10th St	4-quadrant gate	2 vehicular arm gates, channelizers, 4 pedestrian arm gates and exit swing gates				X
Banes Ln	Other roadway change	Extend for access to new parking and cul-de-sac for access to system site	X	X		X
Luchessa Ave	4-quadrant gate	2 vehicular arm gates, channelizers, 4 pedestrian arm gates and exit swing gates				X
Frazier Lake Rd	Alignment change	Grade separation and realignment to connect to SR 152 grade separation			X	
SR 152	Grade separation	New Overpass. Road realigned. On-ramp access from existing Holsclaw Road, Frazier Lake Road			X	
Carnadero Avenue	Road closure	Road closure				X
Bloomfield Ave	4-quadrant gate	2 vehicular arm gates, channelizers, 4 pedestrian arm gates and exit swing gates				X
SR 152/Pachecho Pass Hwy	Road widening	Road widening, additional turn out and transition lane on westbound CA-152, additional left turn lane and transition lane on eastbound CA-152; additional lanes provide queueing space for vehicles going from CA-152 to TPSS site Turn and transition lanes extended; additional queueing space for vehicles going from CA-152 to the Tunnel 2 west portal access road.	X	X	X	X
Pachecho Pass						
N Romero Rd	Alignment change	Realignment	X	X	X	X
San Joaquin Valley						
Fahey Rd	Alignment change	Realignment	X	X	X	X
Volta Rd	Alignment change/road closure	Intersection realigned and roadway closed north of Henry Miller Rd	X	X	X	X
Henry Miller Rd	Grade separation	Road realigned near Volta Rd	X	X	X	X

Roadway	Classification	Description of Change	Alternative			
			1	2	3	4
Henry Miller Rd	Other roadway change	New road from Badger Flat Rd to Nantes Ave.along south of HSR	X	X	X	X
Johnson Rd	Road closure	Road closure	X	X	X	X
Nantes Ave	Road closure	Road closure	X	X	X	X
Mercey Springs Rd	Grade separation	Intersection rebuilt as grade-separated and realigned to access Henry Miller Rd as T intersection	X	X	X	X
Santa Fe Grade	Road closure	Road closure	X	X	X	X
Baker Rd	Road closure	Road closure	X	X	X	X
Delta Rd	Grade separation	Intersection rebuilt as grade-separated and realigned to access Henry Miller Rd as T intersection	X	X	X	X
Midway Rd	Road closure	Road closure	X	X	X	X
Box Car Rd	Road closure	Road closure	X	X	X	X
Turner Island Rd	Grade separation	Intersection rebuilt as grade-separated and realigned to access Henry Miller Rd as T intersection	X	X	X	X
Hutchins Rd	Road closure	Road closure	X	X	X	X
Carlucci Rd	Grade separation	New grade separation; intersection access to Henry Miller Rd reconfigured	X	X	X	X

Source: Authority 2019a

At-Grade Crossings

Depending on the configuration of the existing at-grade crossing, one of eight different four-quadrant gate applications (illustrated on Figure 1 through Figure 4) would be installed at each of the 29 at-grade crossings in the San Jose Diridon Station Approach, Monterey Corridor, and Morgan Hill and Gilroy Subsections under Alternative 4. Table 3 shows the number and locations of four-quadrant gate applications. These applications specify the improvements at each at-grade crossing, including the number of vehicle and pedestrian gates, and the need for channelization or raised medians. Table 3 also shows five existing at-grade crossings that would be closed: three private roads, one public road, and one pedestrian crossing.

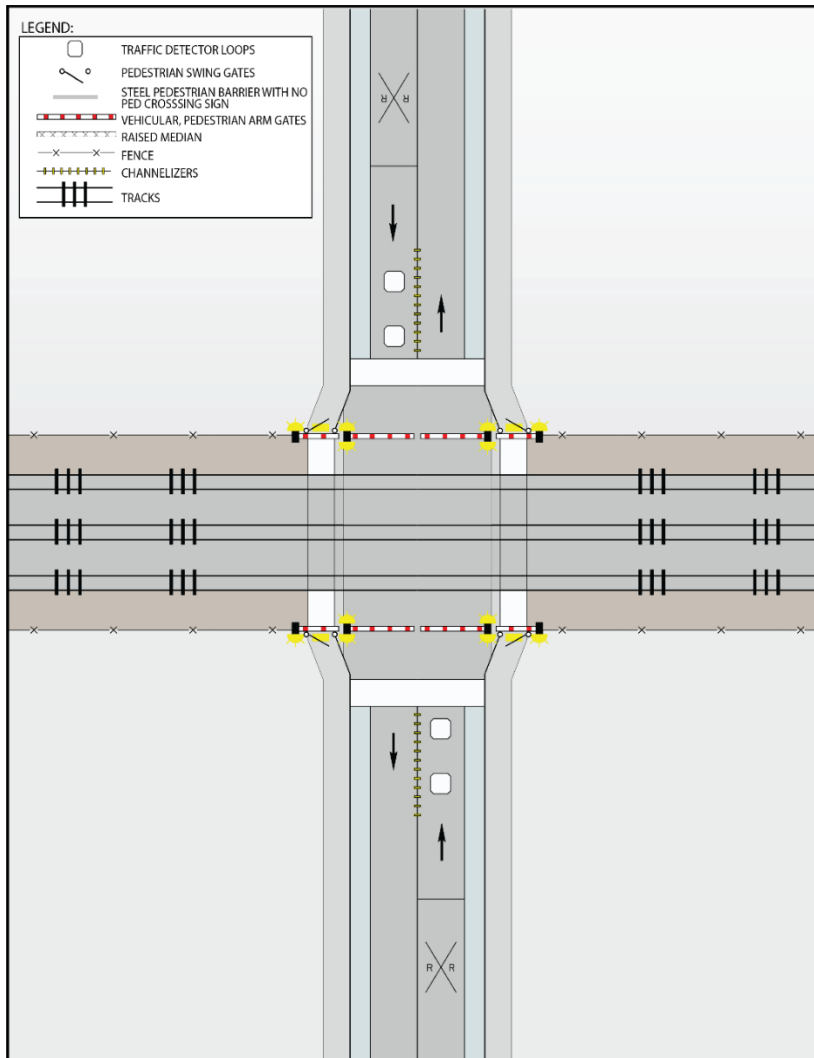
At four crossings (Blanchard Road, Palm and Live Oak Avenues in Coyote Valley, and Bloomfield Road south of Gilroy) within identified wildlife crossing corridors, additional features would be added at the grade crossings to deter wildlife from encroaching into the fenced guideway. These features would be placed across the guideway between the access control fencing and between the tracks as a deterrent to wildlife entering the track bed.

Table 3 Number and Locations of Four-Quadrant Gate Applications

Application	Number of At-Grade Crossings	Location of At-Grade Crossings
A	13	Auzerais Ave (San Jose); W Virginia St (San Jose); Blanchard Rd (San Jose); Main Ave (Morgan Hill); E Dunne Ave (Morgan Hill); San Pedro Ave (Morgan Hill); Tennant Ave (Morgan Hill); E Middle Ave (Morgan Hill); IOOF Ave (Gilroy); Lewis St (Gilroy); Martin St (Gilroy); E 6th St (Gilroy); Bloomfield Ave (Gilroy)
A1	2	E 10th St (Gilroy); Luchessa Ave (Gilroy)
B	1	E San Martin Ave (Santa Clara County)
C	2	Palm Ave (San Jose); Las Animas Ave (Gilroy)
C1	2	Masten Ave (Santa Clara County); Leavesley Rd (Gilroy)
C2	6	Live Oak Ave (San Jose); Tilton Ave (Morgan Hill); Church Ave (Santa Clara County); Rucker Ave (Santa Clara County); Buena Vista Ave (Gilroy); Cohansey Ave (Gilroy)
D	2	Skyway Dr (San Jose); Branham Ln (San Jose)
D1	1	Chynoweth Ave (San Jose)
Closed	5	Emado Avenue (Private) and Fox Lane (Private) in San Jose; No Name driveway (Private), Casey Lane (Pedestrian Crossing) and East 7th Street in Gilroy
Total	29	

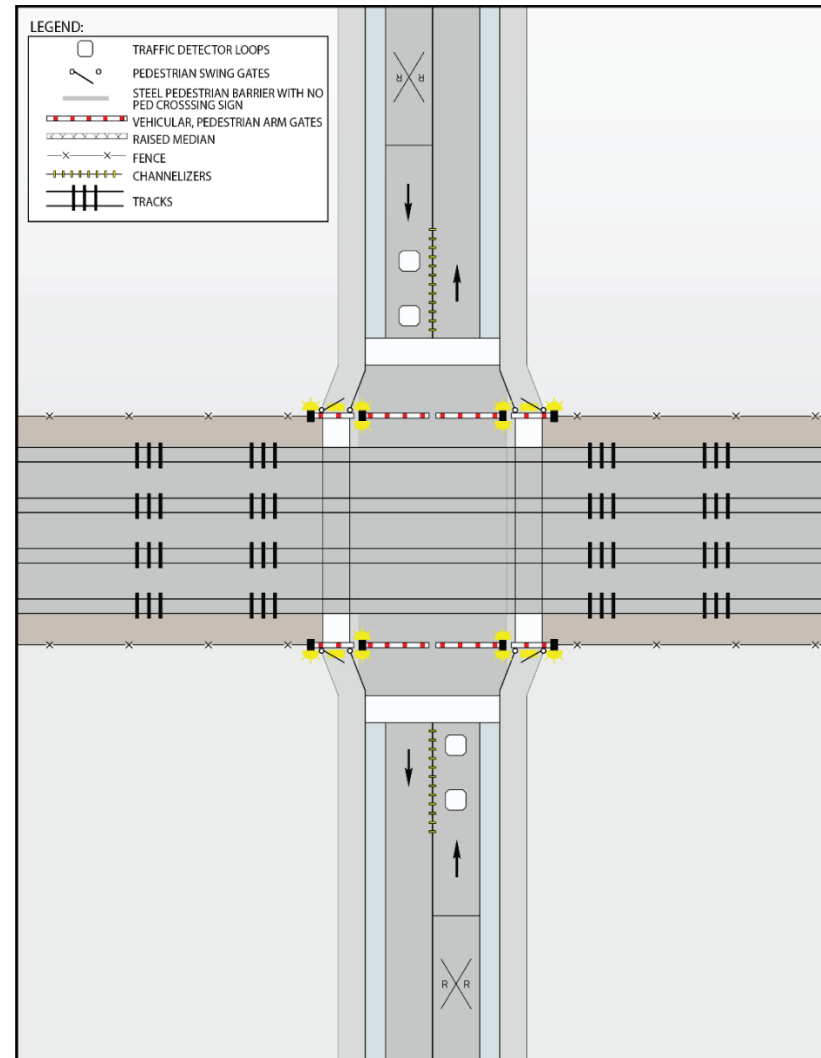
Source: Authority 2019a

Application A



Source: Authority 2019a

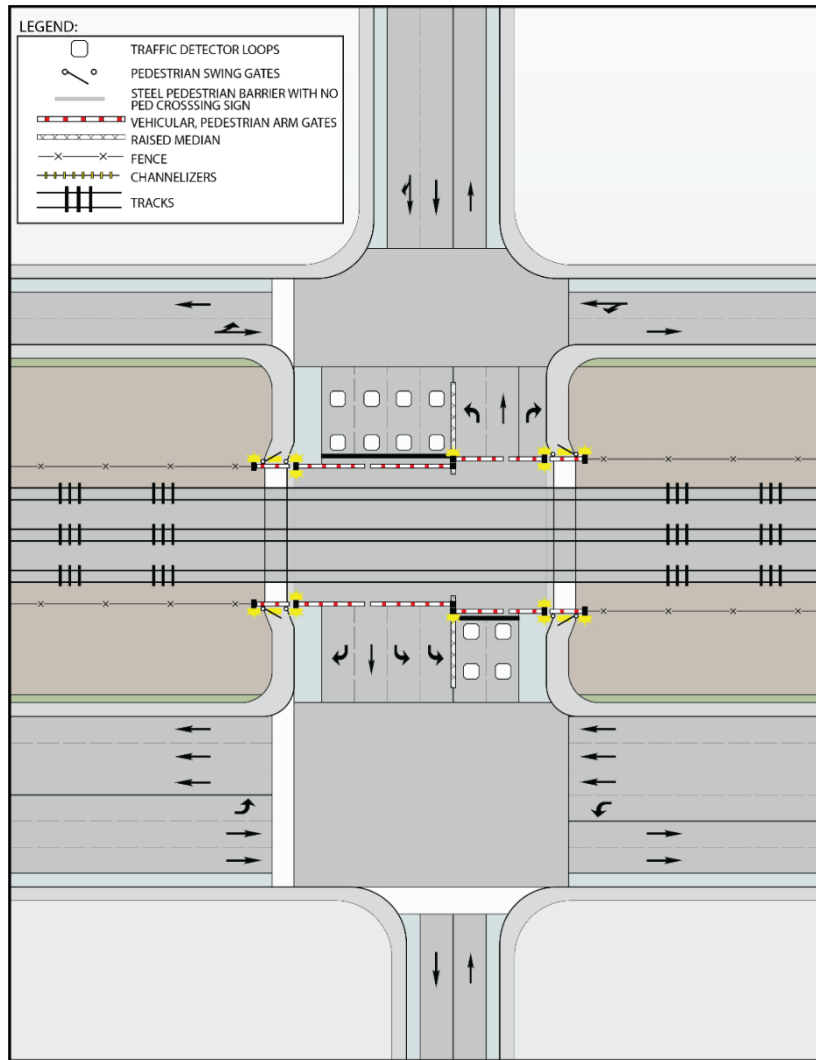
Application A1



MARCH 2019

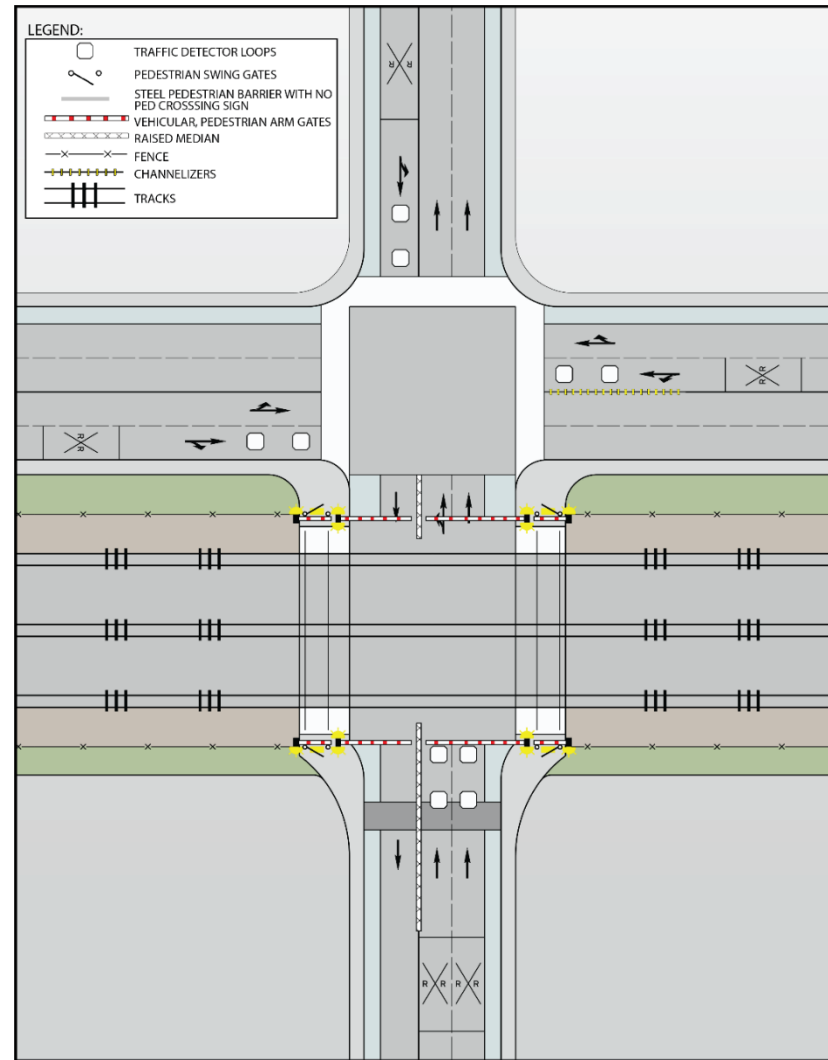
Figure 1 Applications of Four-Quadrant Gates (Options A and A1)

Application B



Source: Authority 2019a

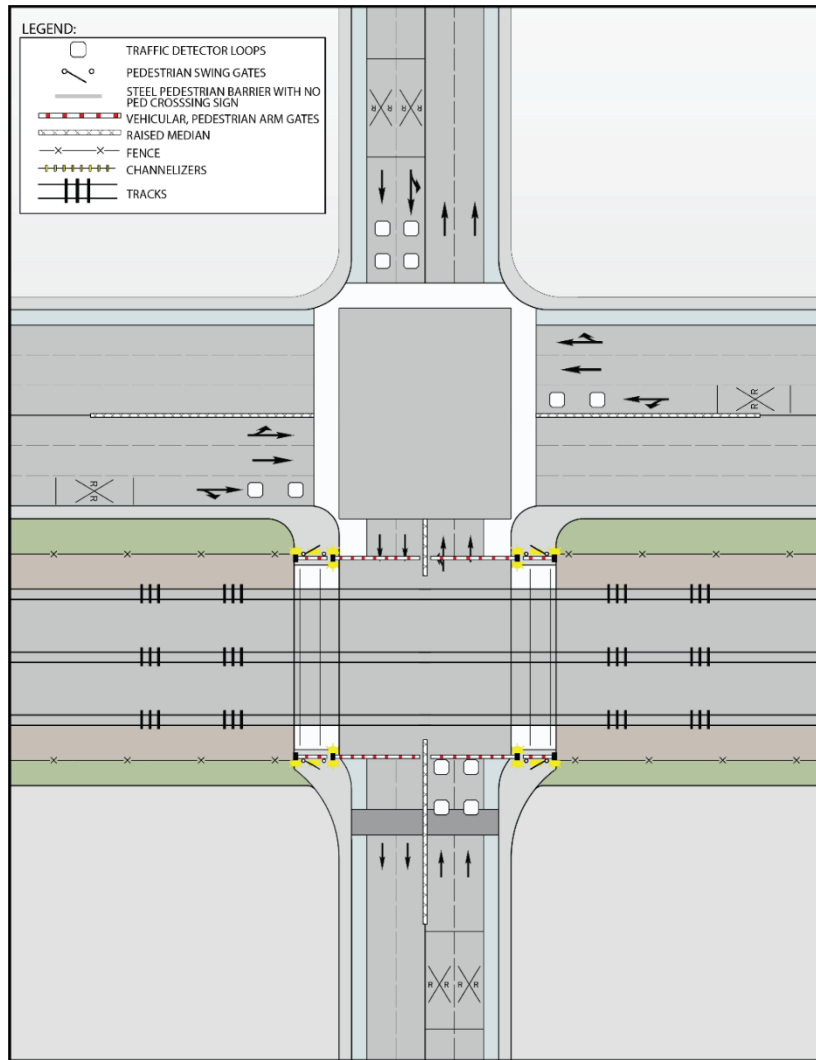
Application C



MARCH 2019

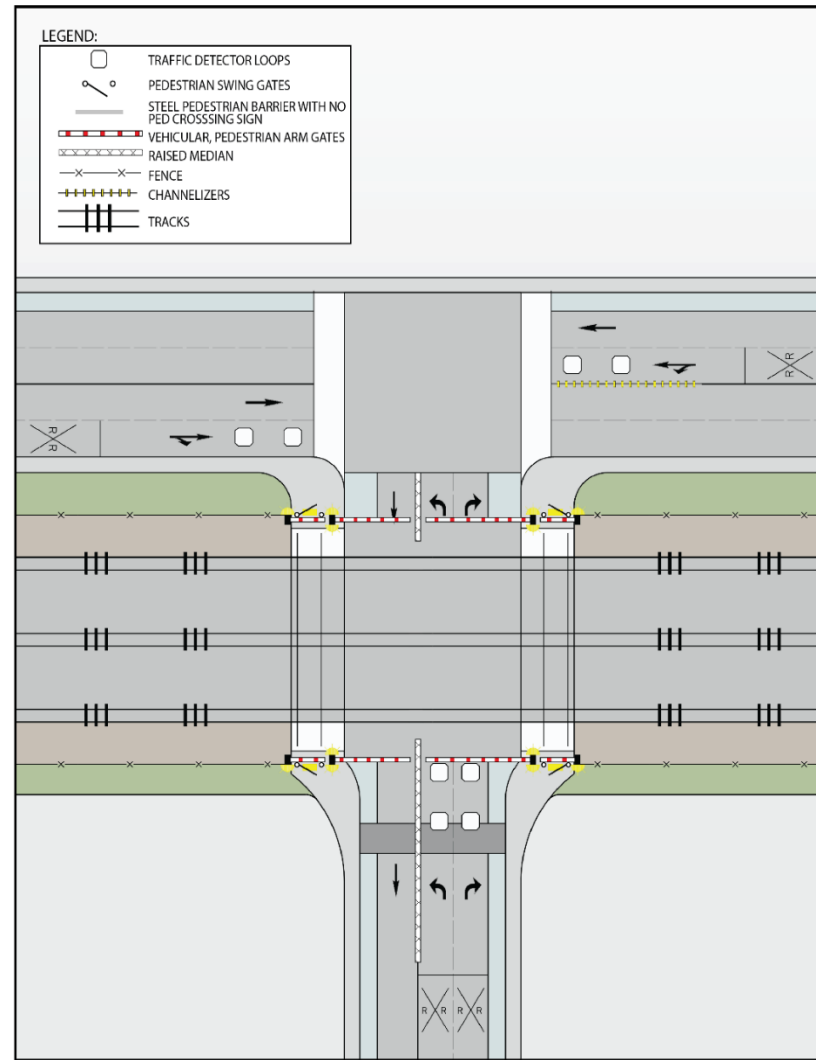
Figure 2 Applications of Four-Quadrant Gates (Options B and C)

Application C1



Source: Authority 2019a

Application C2

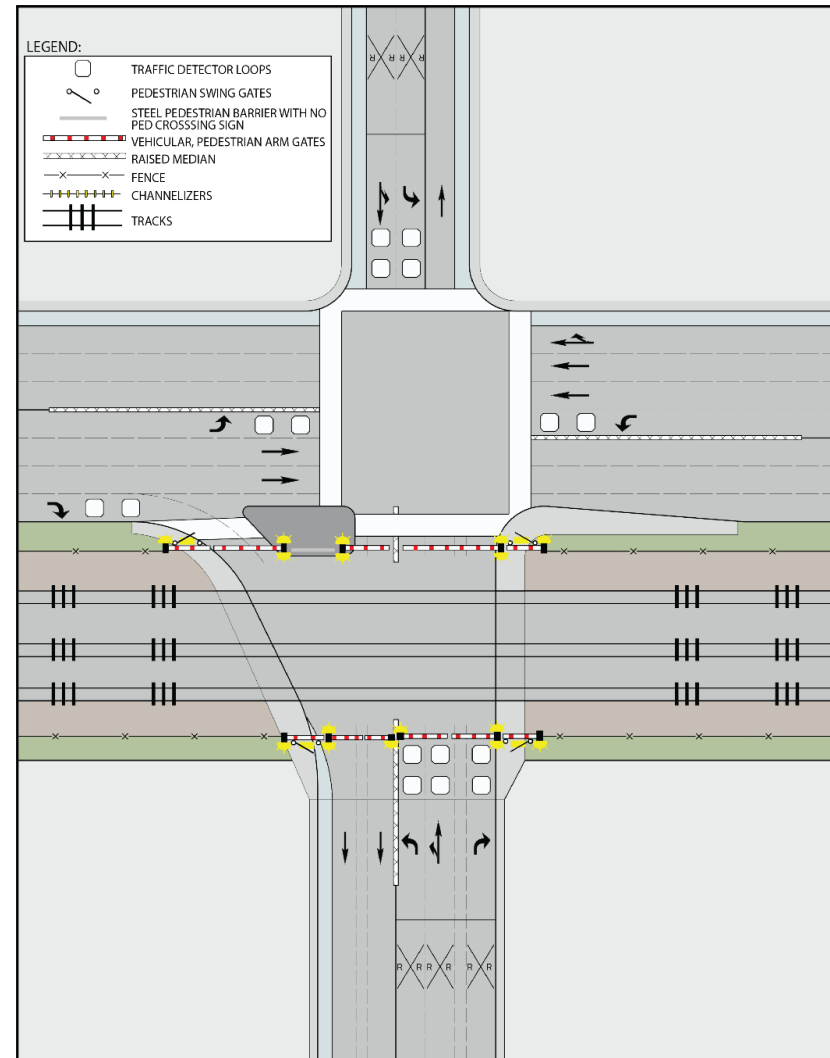
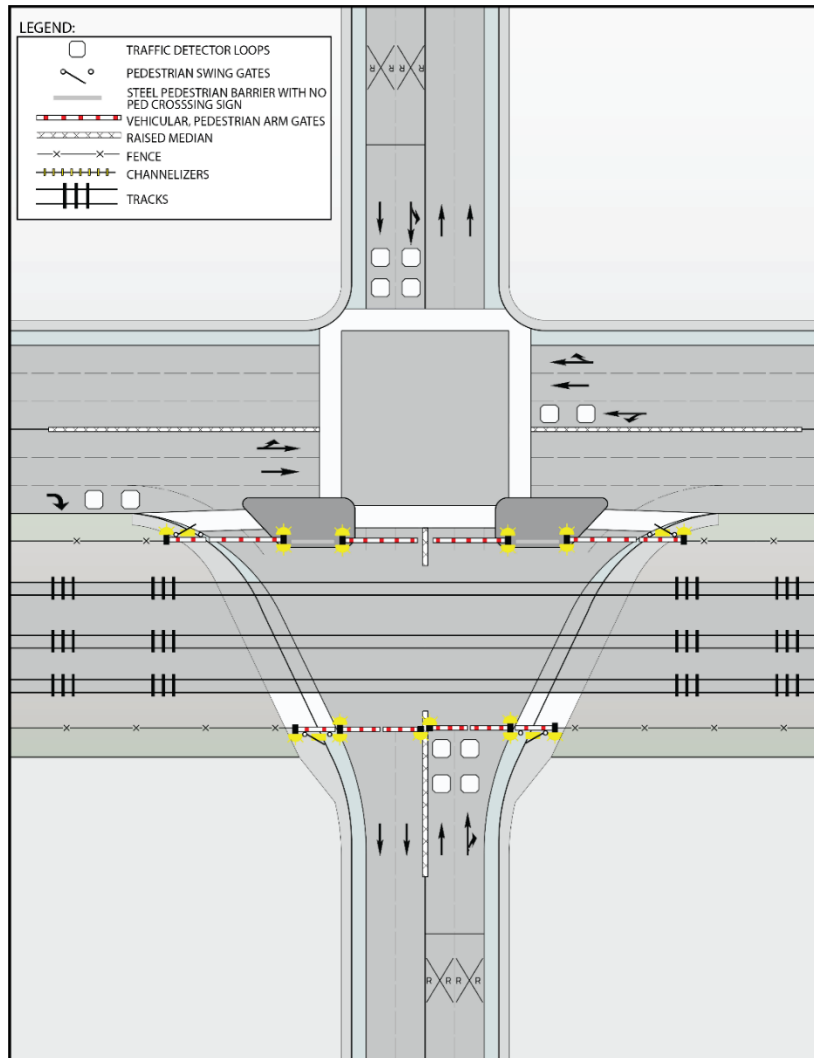


MARCH 2019

Figure 3 Applications of Four-Quadrant Gates (Options C1 and C2)

Application D

Application D1



Source: Authority 2019a

MARCH 2019

Figure 4 Applications of Four-Quadrant Gates (Options D and D1)