

FOR IMMEDIATE RELEASE

October 2, 2020

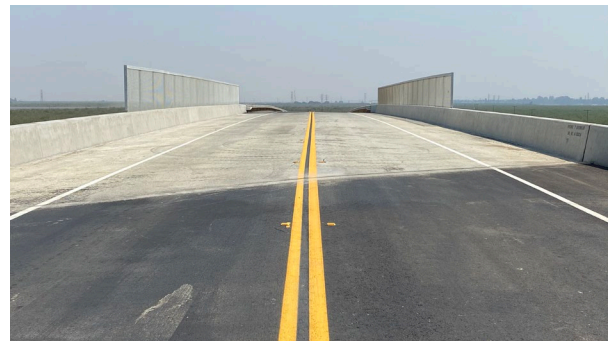
Toni Tinoco
(W) (559) 445-6776
(C) (559) 274-8975
Toni.Tinoco@hsr.ca.gov

Avenue 7 Overpass Opens to Traffic in Madera County

MADERA COUNTY, Calif. – Today, the California High-Speed Rail Authority (Authority) announced the opening of the Avenue 7 overpass – the third high-speed rail structure to open in the last two months. Avenue 7 is one of nine grade separations in Madera County.

“Grade separations ensure the safety of the local community and have longstanding environmental benefits including the reduction of unhealthy greenhouse gas emissions from idling vehicles normally at these railroad crossings,” said Garth Fernandez, interim Central Valley Regional Director. “We’re proud to complete projects like this that will have a lasting benefit for years to come.”

When in operation, high-speed rail greenhouse gas emissions savings will be the equivalent of taking more than 400,000 cars off the road each year.



Work at the Avenue 7 overpass included straightening out a bend in the road and realigning Road 33, which travels underneath the structure. The overpass will allow traffic to travel over the future high-speed rail line. The structure spans more than 196 feet long, 43 feet wide and reaches 44 feet at its highest point.

Last month, the Avenue 10 and Avenue 15 overpasses opened to traffic in Madera County. This project is part of Construction Package 1, the first 32-mile construction area that stretches from Avenue 19 in Madera County to East American Avenue in Fresno County.

Currently, an average of 1,100 workers are dispatched each day to 32 active construction sites between Madera and Kern counties. Since the start of construction, more than 4,300 construction workers have been dispatched to work on the high-speed rail project.

###